



DANGER

Danger of electrical shock, burns or death. Always remove all power sources before attempting any repair, service or diagnostic work. Power can be present from shore power, generator, inverter or battery. All power sources must be disabled and secured before performing any service.

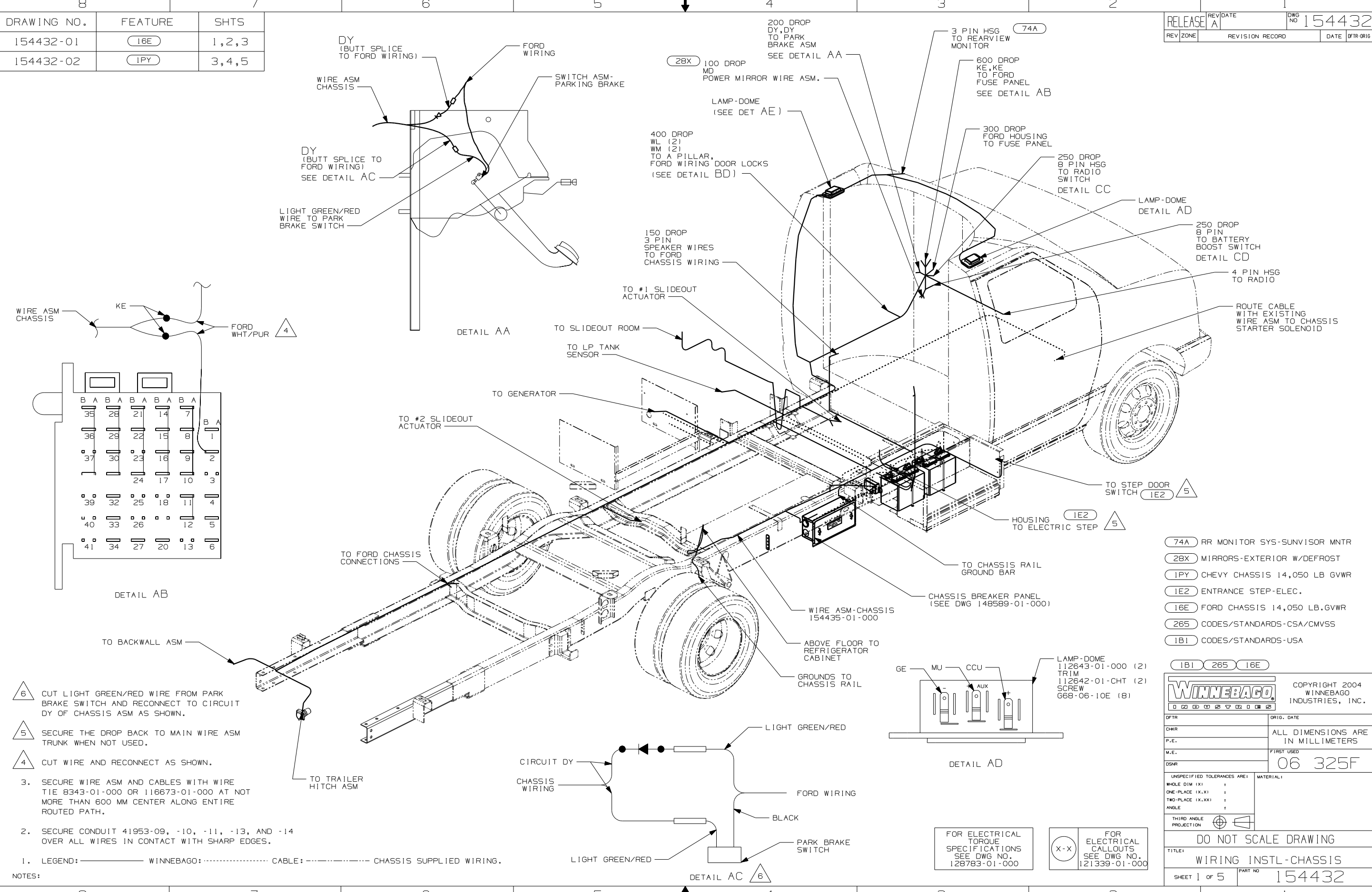


CAUTION

If you lack the skills, tools or equipment to perform diagnostic or repair work leave such work to an authorized Winnebago Industries dealer or other qualified shop.

DRAWING NO.	FEATURE	SHTS
154432-01	16E	1,2,3
154432-02	1PY	3,4,5

RELEASE	REV/DATE	DWG NO
	A	154432
REV ZONE	REVISION RECORD	DATE
		DFTR-016



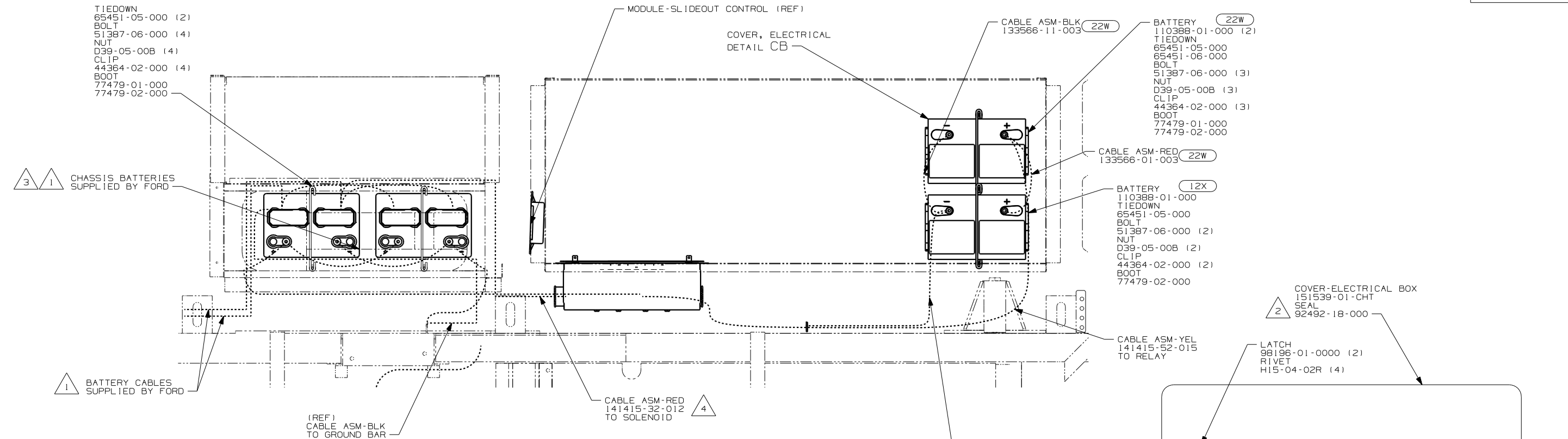
- △ CUT LIGHT GREEN/RED WIRE FROM PARK BRAKE SWITCH AND RECONNECT TO CIRCUIT DY OF CHASSIS ASM AS SHOWN.
- △ SECURE THE DROP BACK TO MAIN WIRE ASM TRUNK WHEN NOT USED.
- △ CUT WIRE AND RECONNECT AS SHOWN.
3. SECURE WIRE ASM AND CABLES WITH WIRE TIE 8343-01-000 OR 116673-01-000 AT NOT MORE THAN 600 MM CENTER ALONG ENTIRE ROUTED PATH.
2. SECURE CONDUIT 41953-09, -10, -11, -13, AND -14 OVER ALL WIRES IN CONTACT WITH SHARP EDGES.
1. LEGEND: — WINNEBAGO: CABLE: - - - - - CHASSIS SUPPLIED WIRING.

- 74A RR MONITOR SYS-SUNVISOR MNTR
- 28X MIRRORS-EXTERIOR W/DEFROST
- 1PY CHEVY CHASSIS 14,050 LB GVWR
- 1E2 ENTRANCE STEP-ELEC.
- 16E FORD CHASSIS 14,050 LB.GVWR
- 265 CODES/STANDARDS-CSA/CMVSS
- 1B1 CODES/STANDARDS-USA

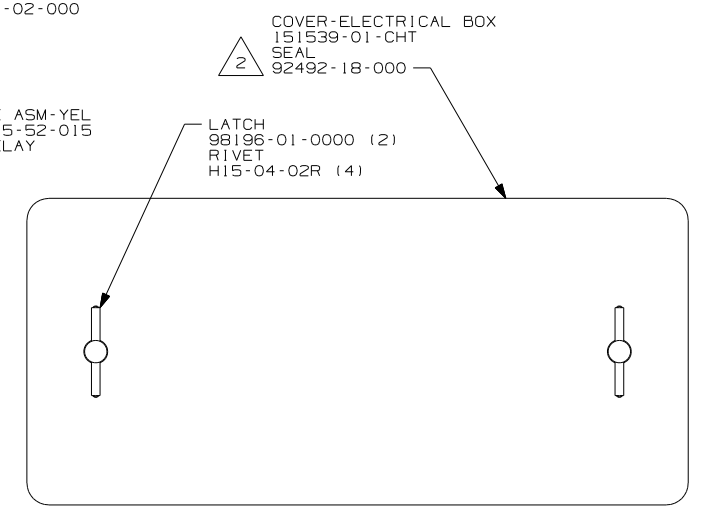
		COPYRIGHT 2004 WINNEBAGO INDUSTRIES, INC.
DFT: _____ CHK: _____ P.E.: _____ M.E.: _____ DSNR: _____	ORIG. DATE ALL DIMENSIONS ARE IN MILLIMETERS FIRST USED 06 325F	UNspecified TOLERANCES ARE: WHOLE DIM (X) : ONE-PLACE (X.X) : TWO-PLACE (X.XX) : ANGLE : THIRD ANGLE PROJECTION
DO NOT SCALE DRAWING		
TITLE: WIRING INSTL-CHASSIS		
SHEET 1 of 5	PART NO	154432
REF:		1 9/28/2005

FOR ELECTRICAL TORQUE SPECIFICATIONS SEE DWG NO. 128783-01-000

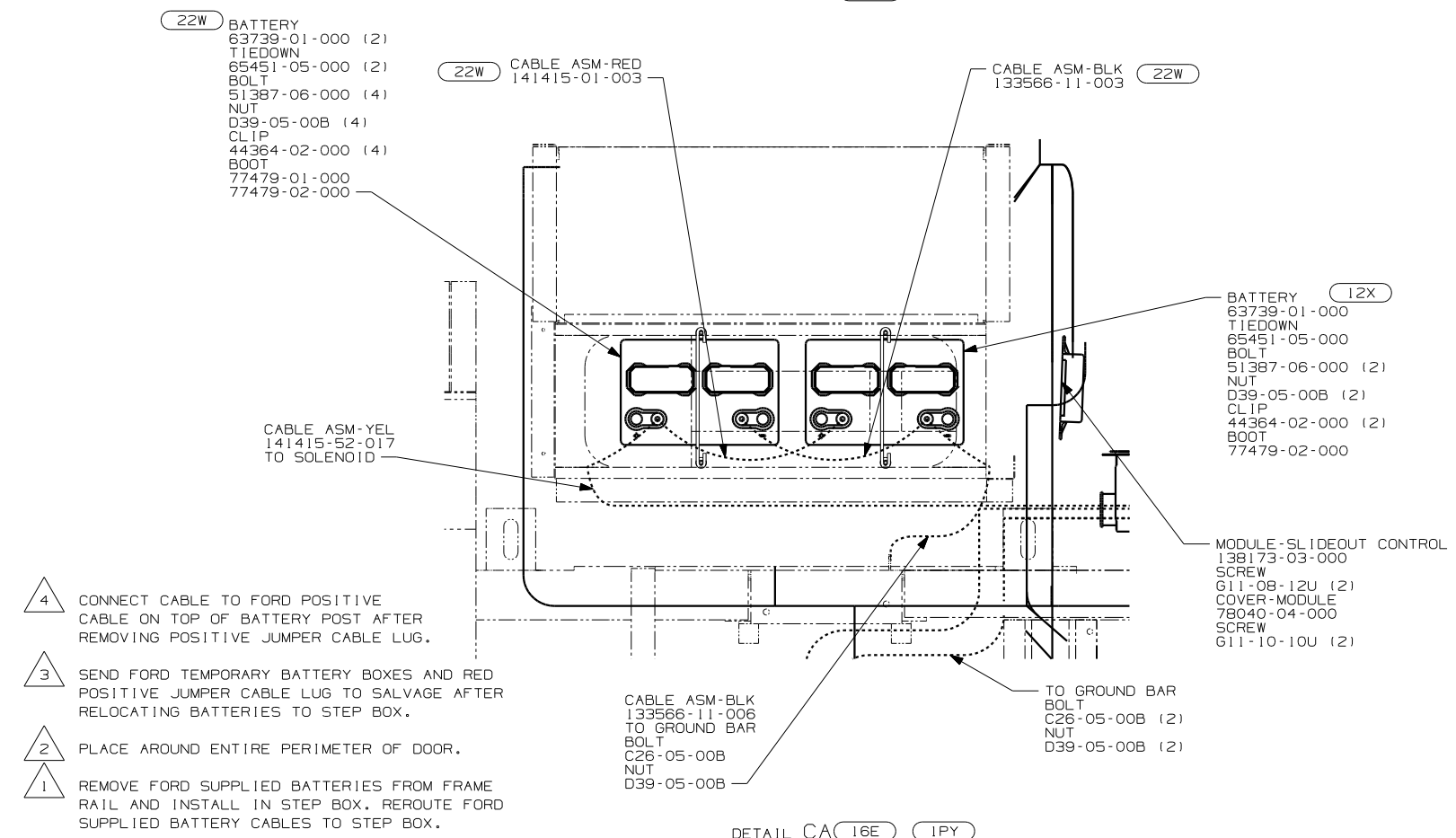
(X-X) FOR ELECTRICAL CALLOUTS SEE DWG NO. 121339-01-000



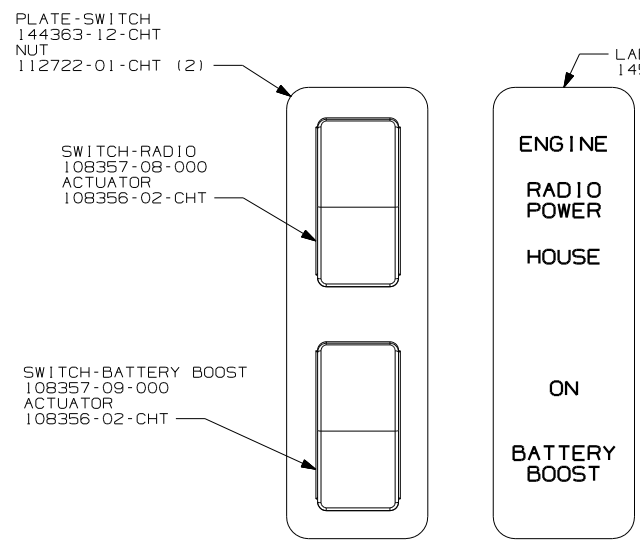
VIEW CA (1FX)



DETAIL CB



DETAIL CA (16E) (1PY)

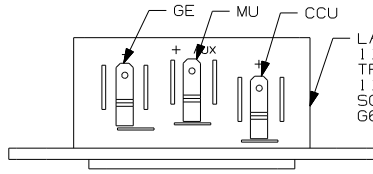
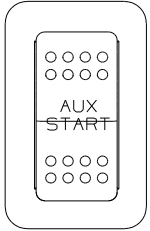
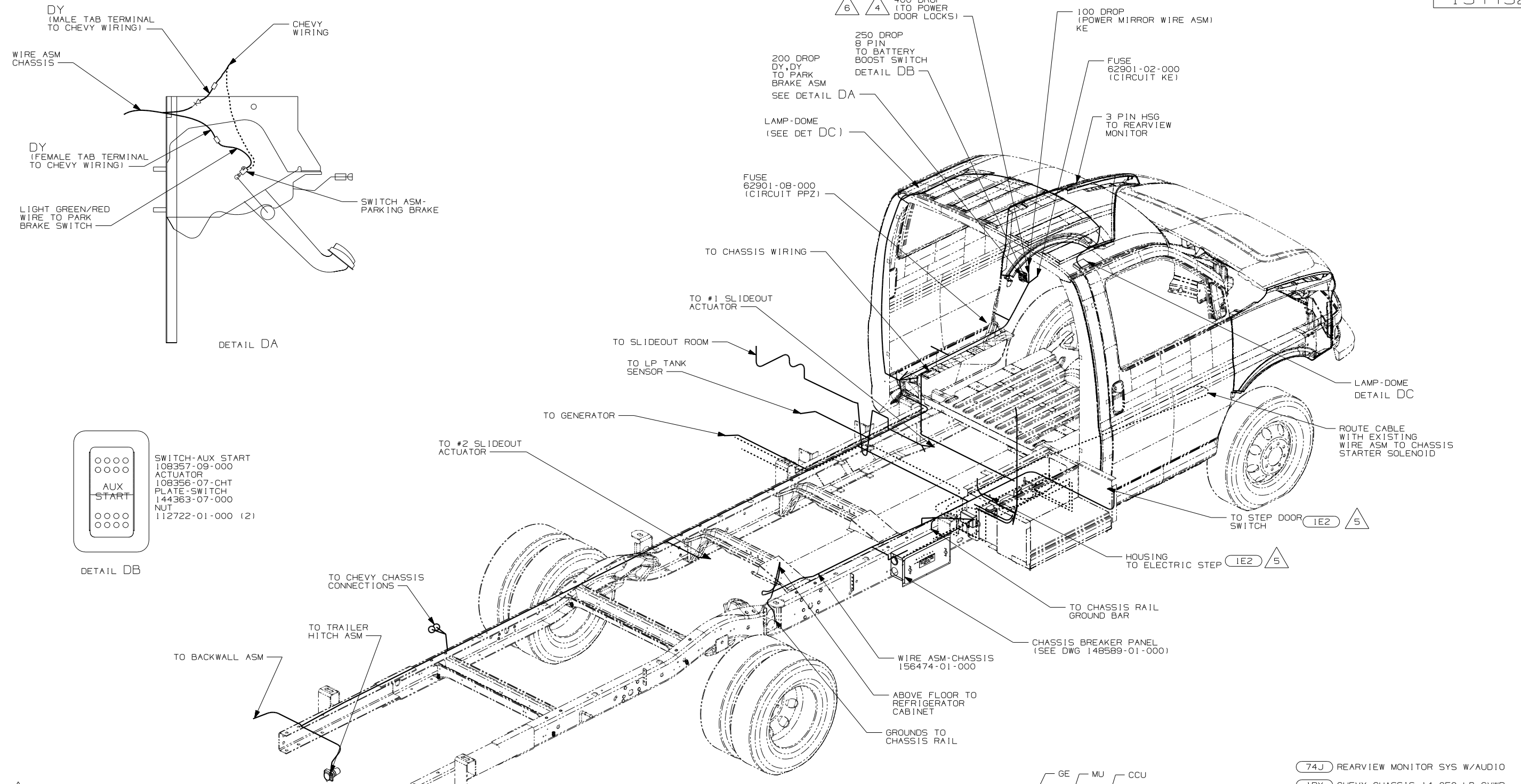


DETAIL CC (16E)

- NOTES:
- 4 CONNECT CABLE TO FORD POSITIVE CABLE ON TOP OF BATTERY POST AFTER REMOVING POSITIVE JUMPER CABLE LUG.
 - 3 SEND FORD TEMPORARY BATTERY BOXES AND RED POSITIVE JUMPER CABLE LUG TO SALVAGE AFTER RELOCATING BATTERIES TO STEP BOX.
 - 2 PLACE AROUND ENTIRE PERIMETER OF DOOR.
 - 1 REMOVE FORD SUPPLIED BATTERIES FROM FRAME RAIL AND INSTALL IN STEP BOX. REROUTE FORD SUPPLIED BATTERY CABLES TO STEP BOX.

- (265) CODES/STANDARDS-CSA/CMVSS
- (22W) BATTERY-SECOND
- (16E) FORD CHASSIS 14,050 LB.GVWR
- (12X) BATTERY-ONE
- (1PY) CHEVY CHASSIS 14,050 LB GVWR
- (1FX) FORD 14,050# GVWR DIESEL
- (1B1) CODES/STANDARDS-USA

FIRST USED	06 325F
TITLE	DO NOT SCALE DRAWING
	WIRING INSTL-CHASSIS
SHEET 3	PART NO 154432

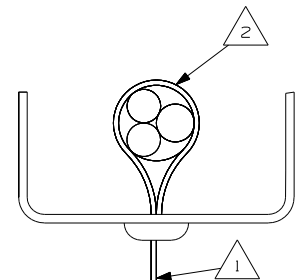
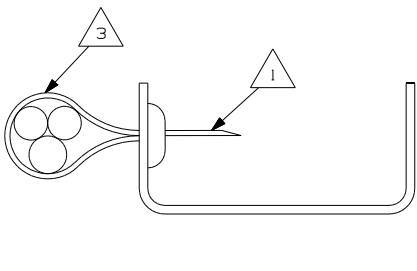
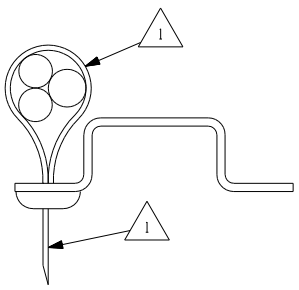
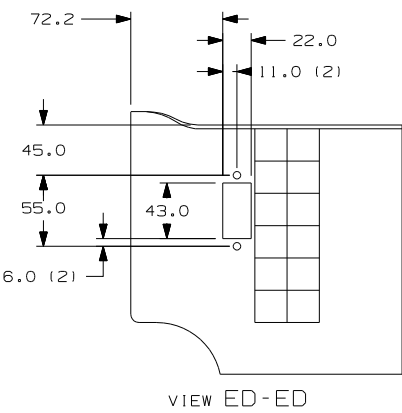
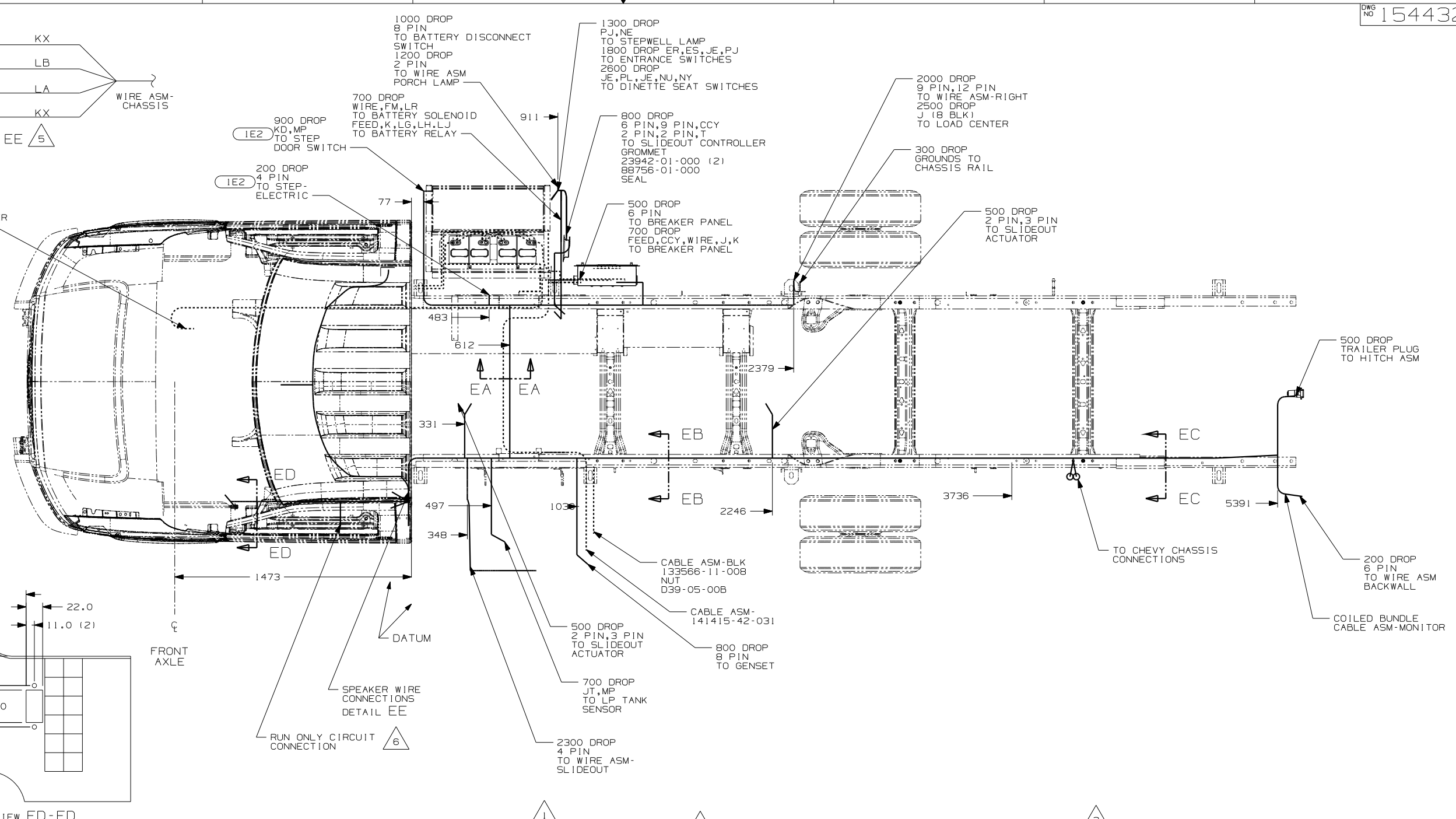
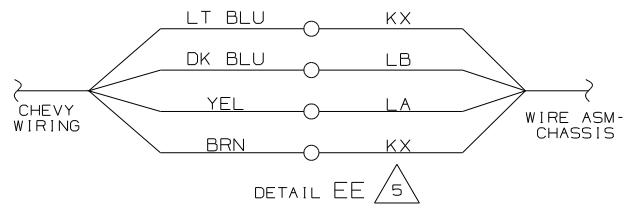


- NOTES:
- LEGEND: — WINNEBAGO; - - - - - CABLE; - · - - - - CHASSIS SUPPLIED WIRING.
 - SECURE CONDUIT 41953-09, -10, -11, -13 ASN-14 OVER ALL WIRES IN CONTACT WITH SHARP EDGES.
 - SECURE WIRE ASM AND CABLES WITH WIRE TIE 8343-01-000 OR 116673-01-000 AT NOT MORE THAN 600mm CENTER ALONG ENTIRE ROUTED PATH.

6 REMOVE A-PILLAR LOWER COVER TO ACCESS CHEVY CONNECTORS TO DOOR ASM. CONNECT GRAY TO WL (2 PLACES) AND CONNECT TAN TO WM (2 PLACES) FOR DOOR LOCK ACTUATOR.

- 74J REARVIEW MONITOR SYS W/AUDIO
- IPY CHEVY CHASSIS 14,050 LB GVWR
- 1E2 ENTRANCE STEP-ELEC.
- 265 CODES/STANDARDS-CSA/CMVSS
- 1B1 CODES/STANDARDS USA

FIRST USED	06 325F
TITLE	DO NOT SCALE DRAWING
	WIRING INSTL-CHASSIS
SHEET 4	PART NO 154432



- 6 CONNECT "FEED" CIRCUIT TO CHEVY BROWN WIRE AT B-POST.
- 5 BOTH POSITIVE WIRES ARE TAN. TO TEST, TURN THE RADIO FADE ALL THE WAY TO THE LEFT. CONNECT THE NEGATIVE TERMINAL OF A TEST SPEAKER TO THE WHITE WIRE. THEN ALTERNATE THE TWO TAN WIRES TO THE POSITIVE TERMINAL. WHICHEVER IS THE LOUDER IS THE ONE THAT CONNECTS TO CIRCUIT LA. THE OTHER CONNECTS TO CIRCUIT KX.
- 4 WIRES TO BE TIED TO CROSS MEMBER USING EXISTING HOLES.
- 3 WIRES TO BE TIED TO TOP OF RAIL USING EXISTING HOLES.
- 2 WIRES TO BE TIED TO INSIDE OF RAIL USING EXISTING HOLES.
- 1 CUT OFF EXCESS END OF WIRE TIE.

- 265 CODES/STANDARDS-CSA/CMVSS
- IPY CHEVY CHASSIS 14,050 LB GVWR
- IE2 ENTRANCE STEP-ELEC.
- 1B1 CODES/STANDARDS USA

FIRST USED	06 325F
TITLE	DO NOT SCALE DRAWING
	WIRING INSTL-CHASSIS
SHEET 5	PART NO 154432