



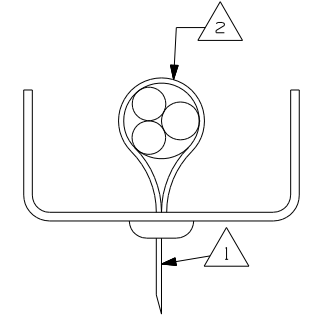
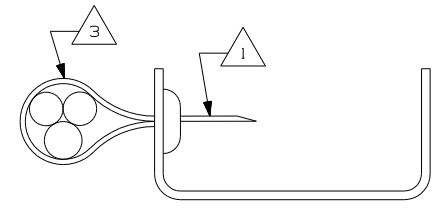
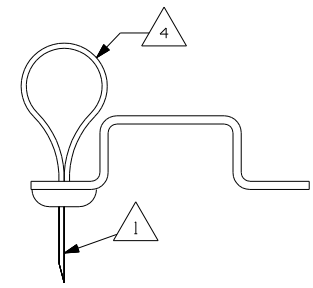
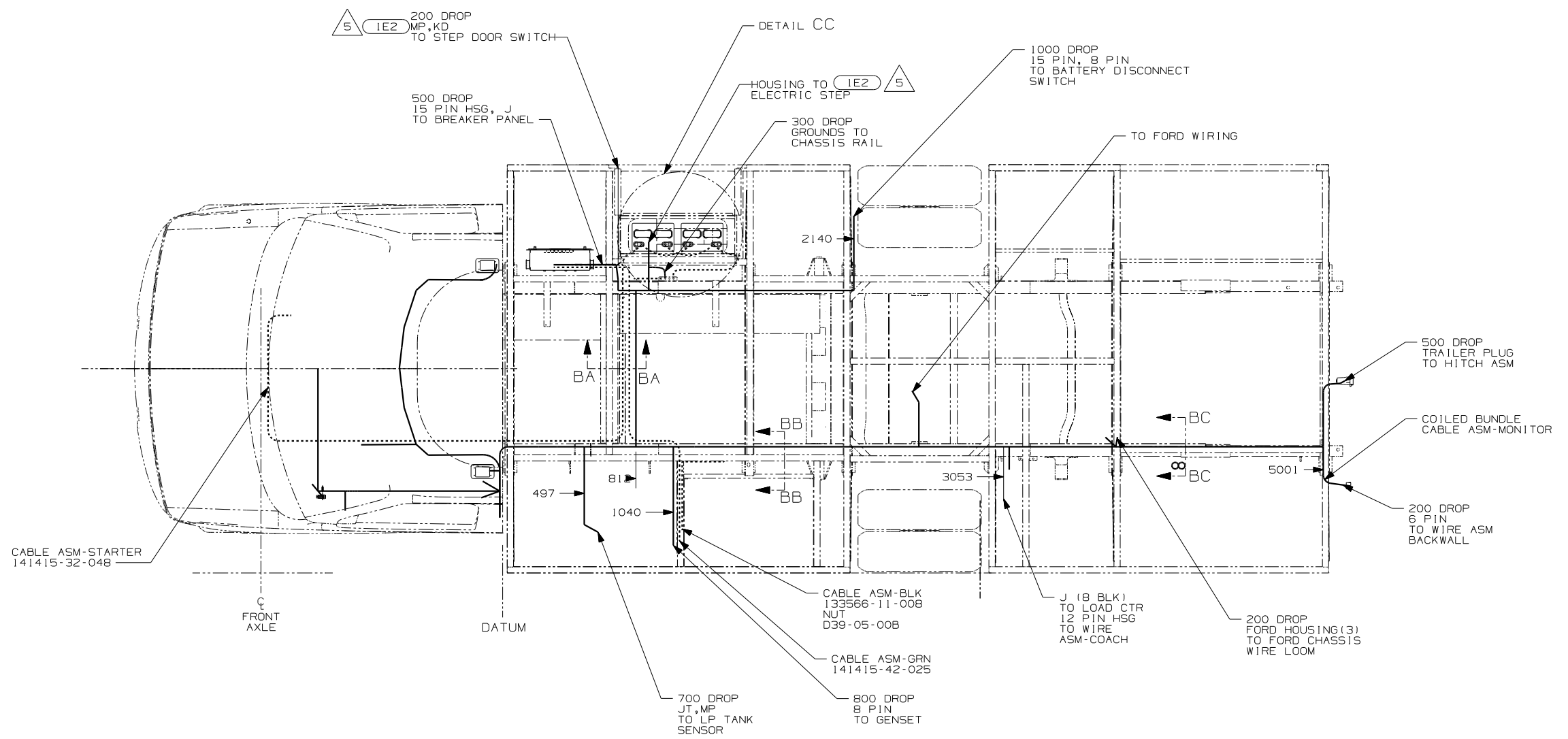
DANGER

Danger of electrical shock, burns or death. Always remove all power sources before attempting any repair, service or diagnostic work. Power can be present from shore power, generator, inverter or battery. All power sources must be disabled and secured before performing any service.



CAUTION

If you lack the skills, tools or equipment to perform diagnostic or repair work leave such work to an authorized Winnebago Industries dealer or other qualified shop.



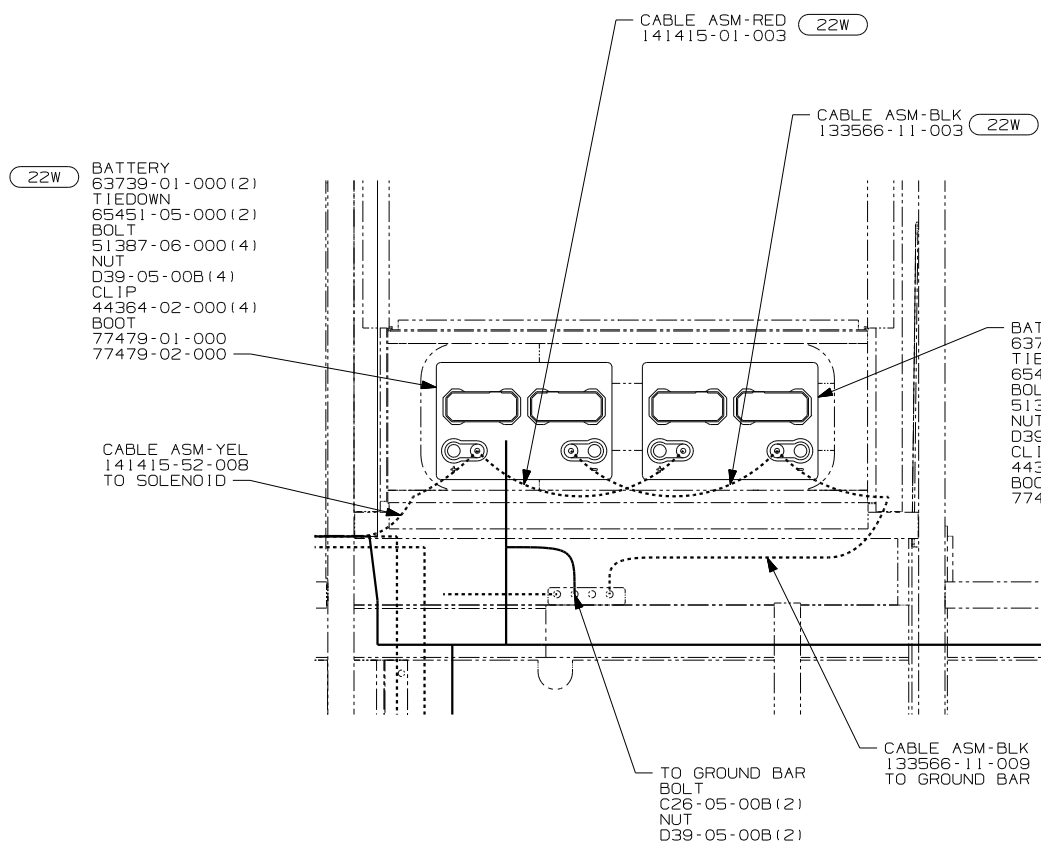
- (265) CODES/STANDARDS CSA
- (16E) FORD CHASSIS 14,050 GVWR
- (16C) FORD CHASSIS 11,500 GVWR
- (1E2) ENTRANCE STEP-ELECTRIC
- (1B1) CODES/STANDARDS USA

- 5 SECURE THE DROP BACK TO MAIN WIRE ASM TRUNK WHEN NOT USED.
- 4 WIRES TO BE TIED TO CROSS MEMBER USING EXISTING HOLES.
- 3 WIRES TO BE TIED TO TOP OF RAIL USING EXISTING HOLES.
- 2 WIRES TO BE TIED TO INSIDE OF RAIL USING EXISTING HOLES.
- 1 CUT OFF EXCESS END OF WIRE TIE.

FOR ELECTRICAL TORQUE SPECIFICATIONS SEE DWG NO. 128783-01-000

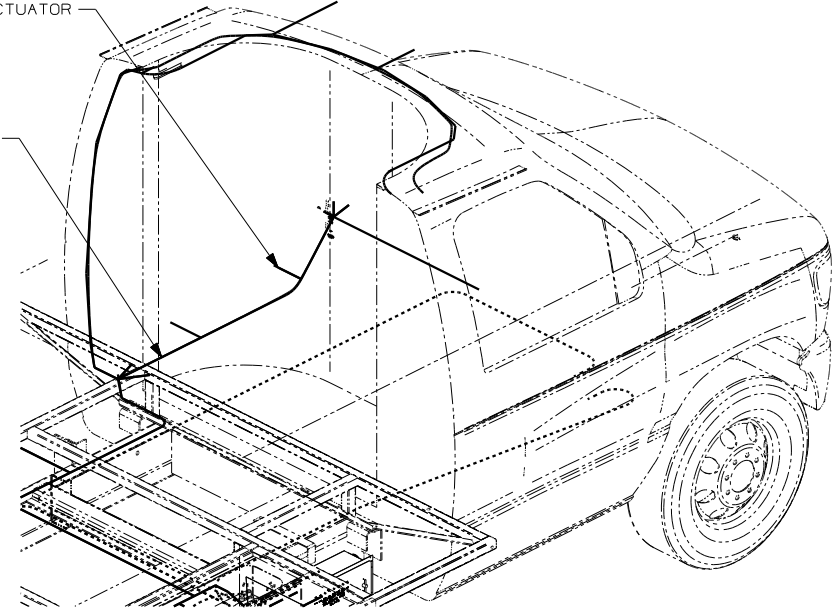
FOR ELECTRICAL CALLOUTS SEE DWG NO. 121339-01-000

FIRST USED	06 324V	FORD
DO NOT SCALE DRAWING		
TITLE:	WIRING INSTL-CHASSIS	
SHEET 2	PART NO	155076

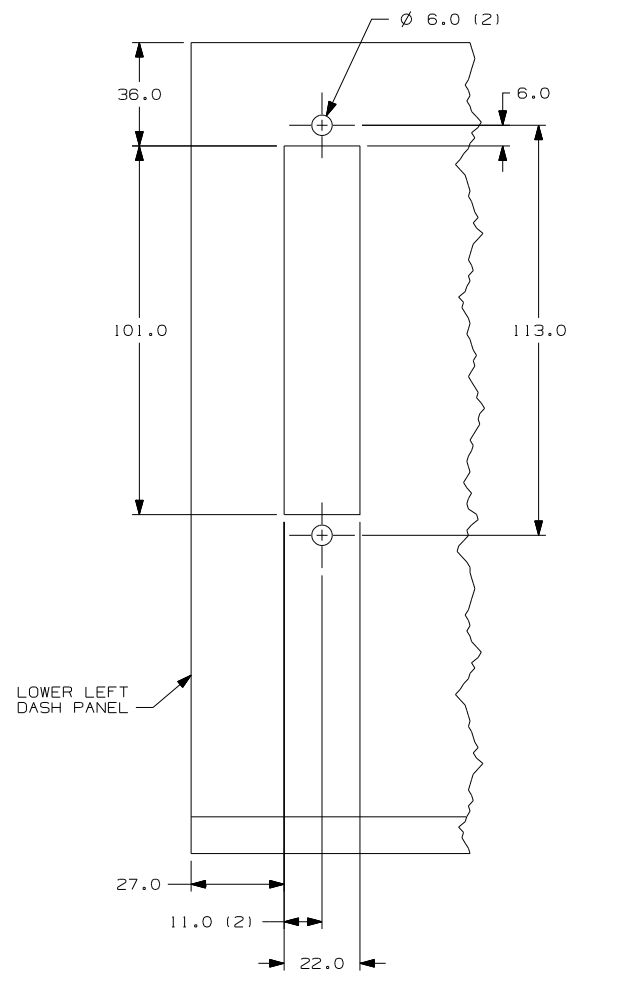


REMOVE A-PILLAR LOWER COVER
 TO XCESS FORD CONNECTORS TO
 DOOR ASM.
 CONNECT RED/ORG TO WL (2 PLACES)
 CONNECT PK?BLK WO WM (2 PLACES)
 FOR DORR LOCK ACCESS ACTUATOR

WIRE ASM-CHASSIS (REF)

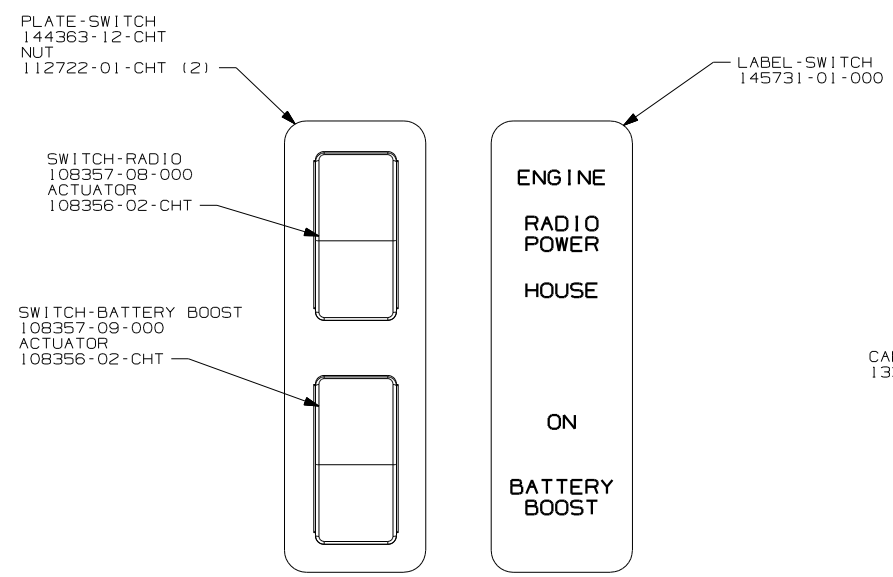


DETAIL CE **16E**

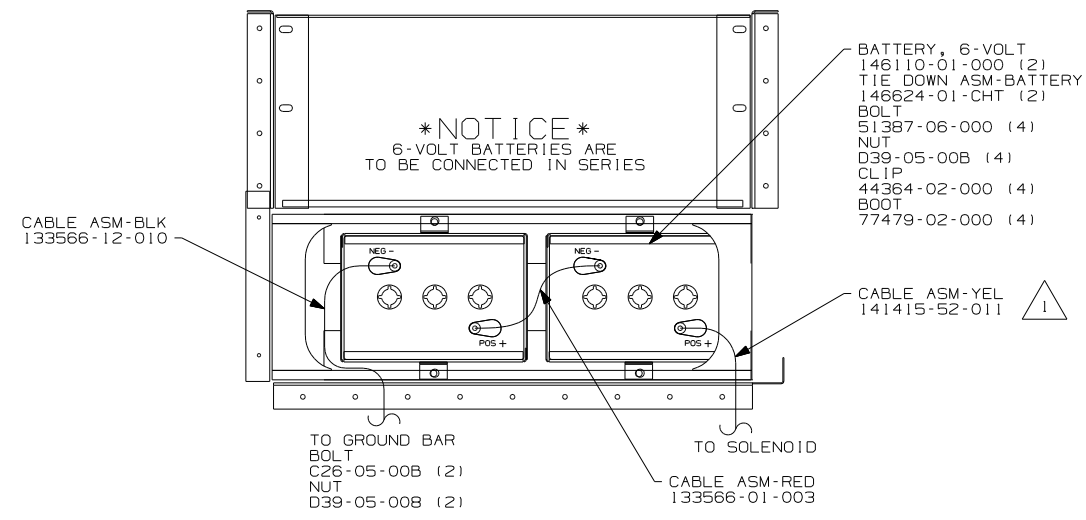


VIEW CB **16E**

DETAIL CC **2 16E 1PY**



DETAIL CD **16E 16C**



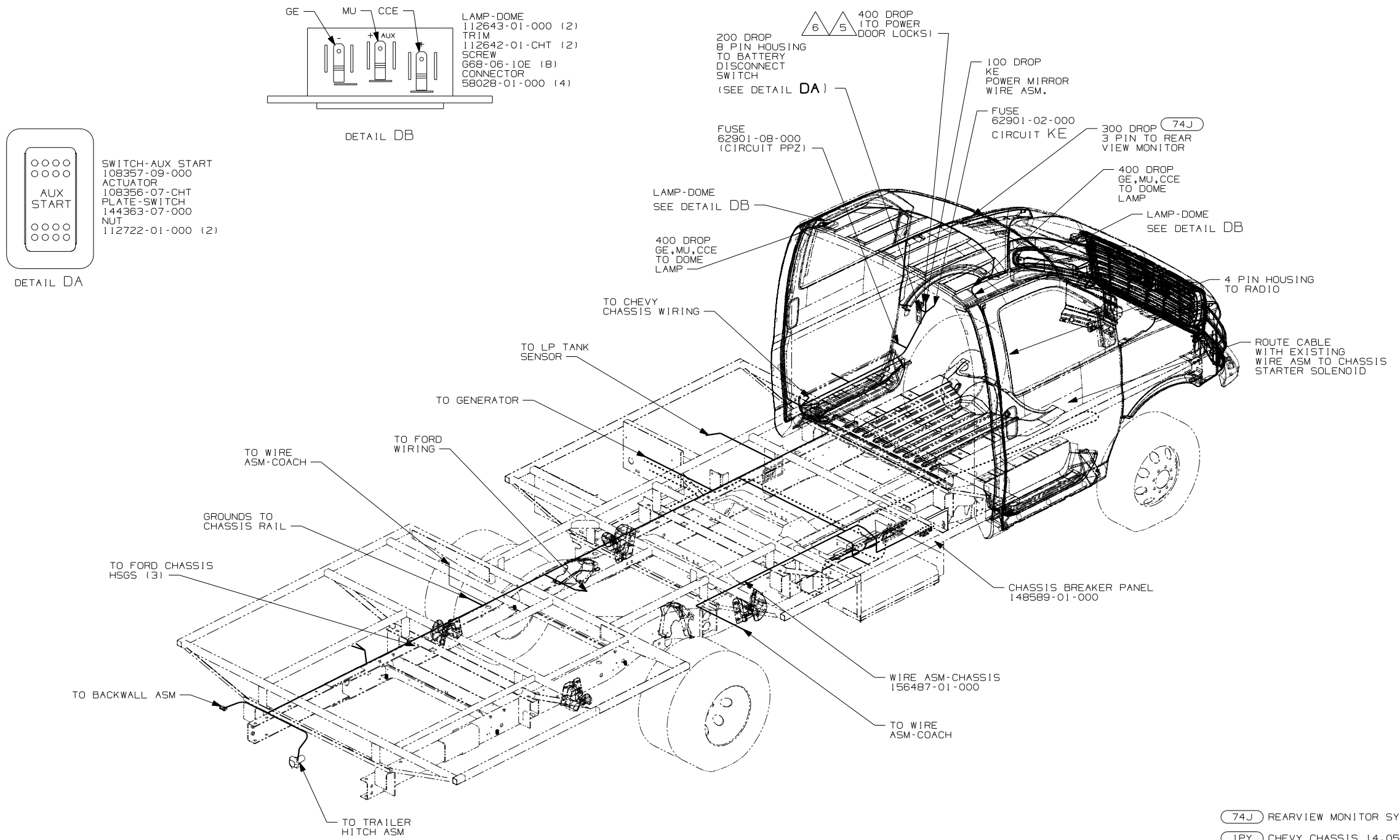
DETAIL CC **644 16E 1PY**

- 1PY** CHEVY CHASSIS 14,050 LB GVWR
- 644** GREAT ALASKAN RENTAL PACKAGE
- 22W** BATTERY-SECOND
- 12X** BATTERY-ONE
- 265** CODES/STANDARDS CSA
- 16E** FORD CHASSIS 14,050 GVWR
- 16C** FORD CHASSIS 11,500 GVWR
- 1B1** CODES/STANDARDS USA

1B1 265

- NOTES:
- 2** WITHOUT **644**.
 - 1** LEAD IS MARKED WITH YELLOW TAPE.

FIRST USED	06 324V
TITLE:	DO NOT SCALE DRAWING
	WIRING INSTL-CHASSIS
SHEET 3	PART NO 155076



- 6 REMOVE A-PILLAR LOWER COVER TO ACCESS CHEVY CONNECTORS TO DOOR ASM. CONNECT GRAY TO WL (2 PLACES) AND CONNECT TAN TO WM (2 PLACES) DOOR LOCK ACTUATOR.
 - 5 THE TAN WIRE IS LOCATED IN POSITION A-4 AND THE GRAY WIRE IS IN LOCATION D-5 OF THE 40 PIN CONNECTOR.
 - 4 CUT WIRE AND RECONNECT AS SHOWN.
 - 3 SECURE WIRE ASM AND CABLES WITH WIRE TIE 8343-01-000 OR 116673-01-000 AT NOT MORE THAN 600 MM CENTER ALONG ENTIRE ROUTED PATH.
2. SECURE CONDUIT 41953-01-000 OVER ALL WIRE IN CONTACT WITH ANY SHARP EDGE.
1. LEGEND: — WINNEBAGO: CABLE: - - - - - CHASSIS SUPPLIED WIRING.

- 74J REARVIEW MONITOR SYS W/AUDIO
- 1PY CHEVY CHASSIS 14,050 LB GVWR
- 28X MIRRORS-EXTERIOR W/DEFROST
- 265 CODES/STANDARDS - CSA/CMVSS
- 1E2 ENTRANCE STEP-ELEC.
- 1B1 CODES/STANDARDS - USA

FOR ELECTRICAL TORQUE SPECIFICATIONS SEE DWG NO. 128783-01-000

FOR ELECTRICAL CALLOUTS SEE DWG NO. 121339-01-000

FIRST USED	06 324V
TITLE	DO NOT SCALE DRAWING
	WIRING INSTL-CHASSIS
SHEET 4	PART NO 155076

