



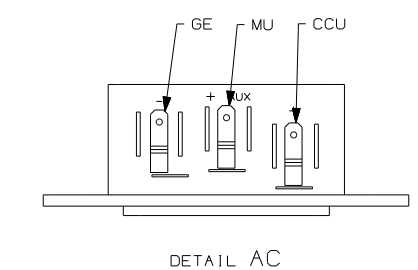
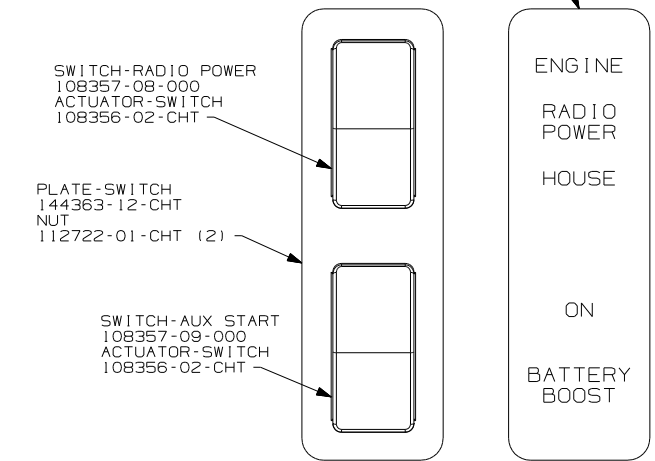
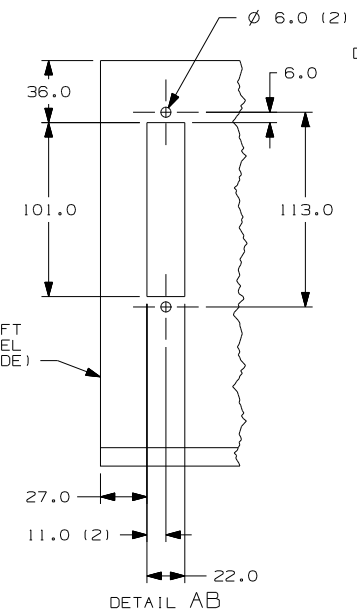
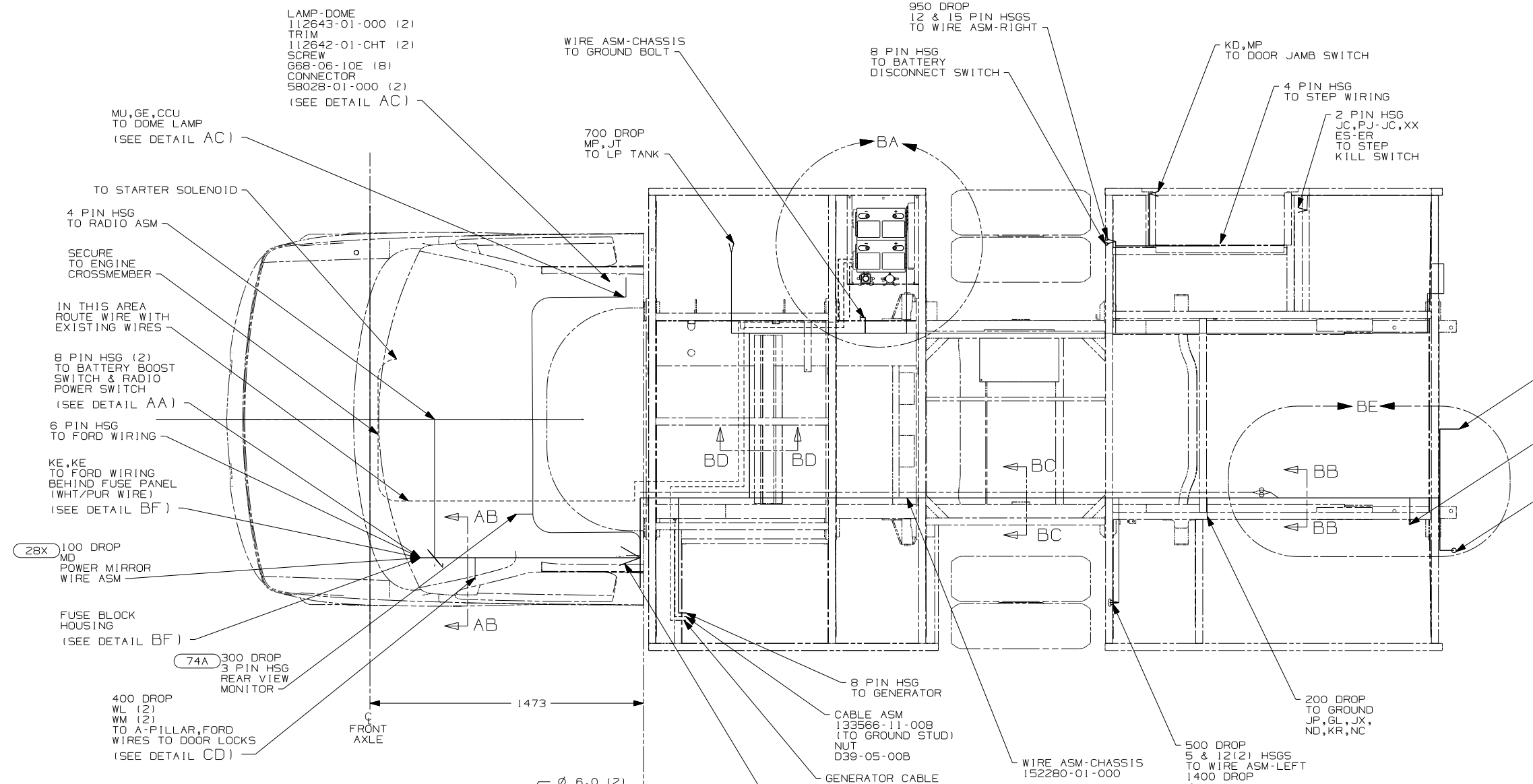
DANGER

Danger of electrical shock, burns or death. Always remove all power sources before attempting any repair, service or diagnostic work. Power can be present from shore power, generator, inverter or battery. All power sources must be disabled and secured before performing any service.



CAUTION

If you lack the skills, tools or equipment to perform diagnostic or repair work leave such work to an authorized Winnebago Industries dealer or other qualified shop.

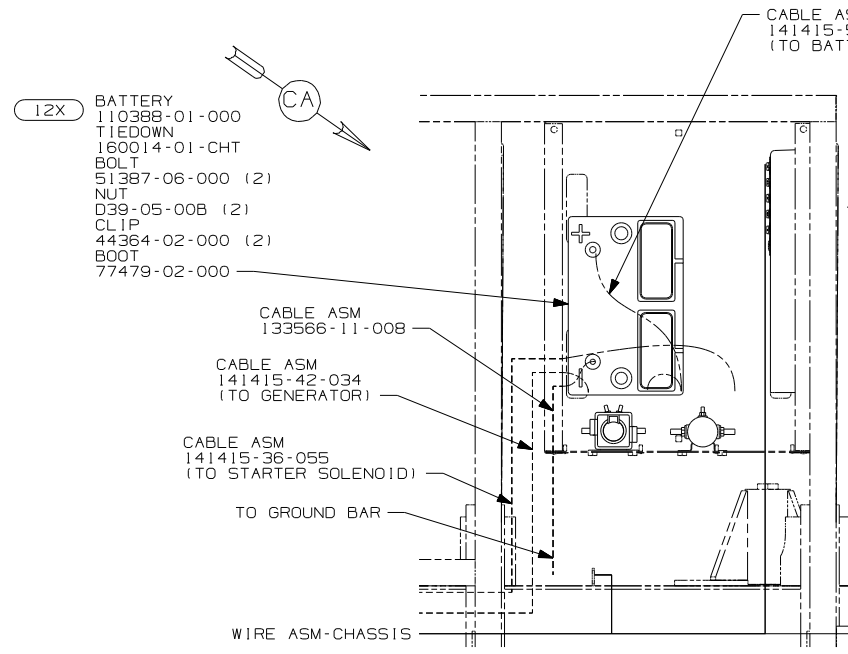


- 74A RR MONITOR SYS-SUNVISOR MNTR
- 28X MIRRORS-EXTERIOR W/DEFROST
- 265 CODES/STANDARDS - CSA/CMVSS
- 1B1 CODES/STANDARDS - USA
- 16B FORD CHASSIS 10,700 LB.GVWR

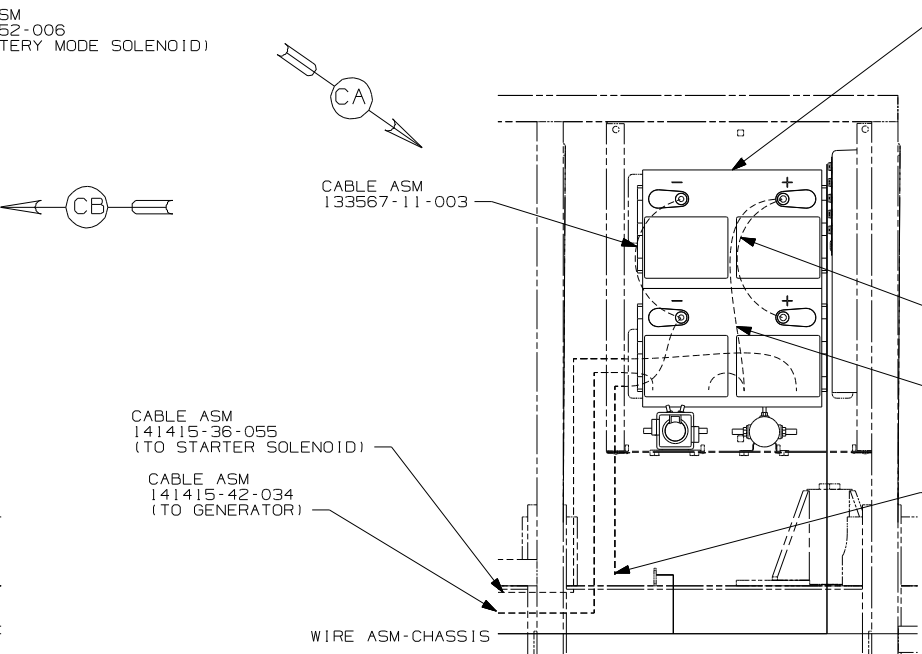
WINNEBAGO		COPYRIGHT 2006 WINNEBAGO INDUSTRIES, INC.	
DFTR	ORIG. DATE	ALL DIMENSIONS ARE IN MILLIMETERS	
CHKR		06 322R	
P.E.			
M.E.	FIRST USED		
DSNR			
UNSPECIFIED TOLERANCES ARE:		MATERIAL:	
WHOLE DIM (X)	: 3		
ONE-PLACE (X, X)	: 1.5		
TWO-PLACE (X, XX)	: 0.50		
ANGLE	: 1°		
THIRD ANGLE PROJECTION			
DO NOT SCALE DRAWING			
TITLE: WIRING INSTL-CHASSIS			
SHEET 1 of 3	PART NO	152268	REV
REF:	1 6/15/2006		

3. USE WITH TIES 8343-04-000 AND 116673-01-000 APPROX 600mm ON CENTER UNLESS OTHERWISE SPECIFIED.
 2. SECURE CONDUIT 41953, TAB AS REQUIRED, OVER ALL WIRES IN CONTACT WITH SHARP EDGES.
 1. LEGEND: — WINNEBAGO: - - - - - CABLE: - - - - - CHASSIS SUPPLIED WIRING.

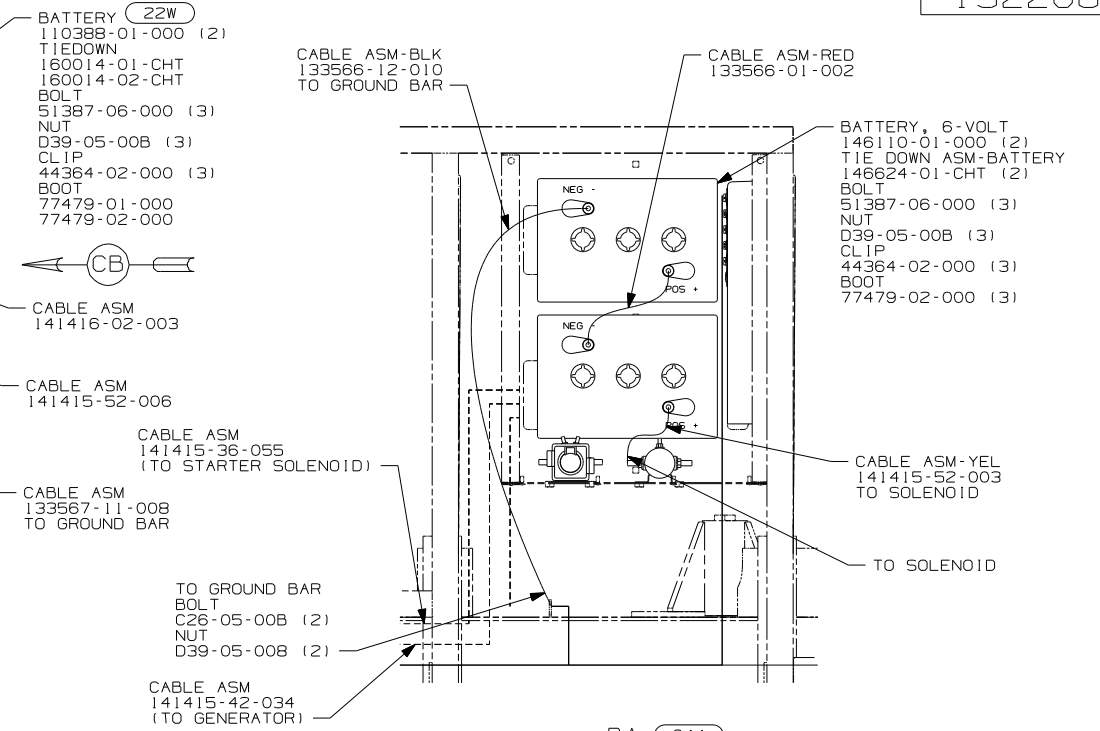
FOR ELECTRICAL TORQUE SPECIFICATIONS SEE DWG NO. 128783-01-000
 X-X FOR ELECTRICAL CALLOUTS SEE DWG NO. 121339-01-000



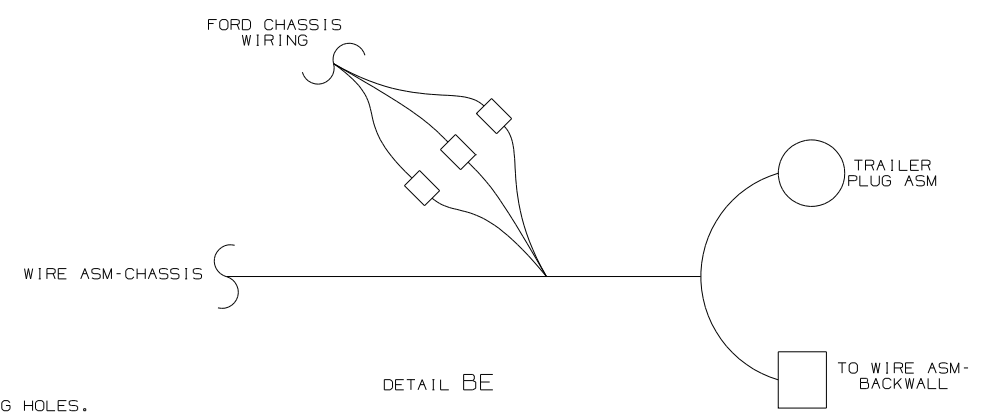
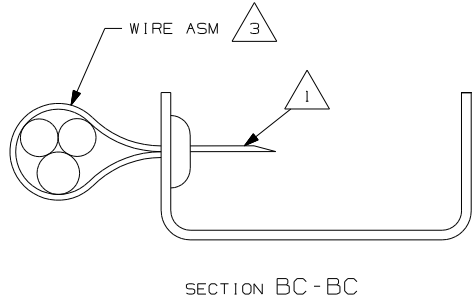
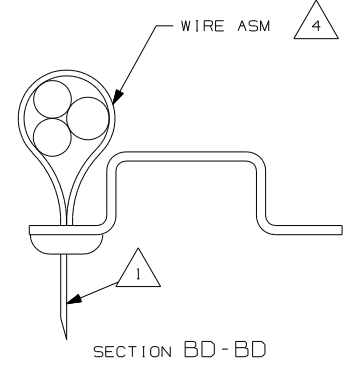
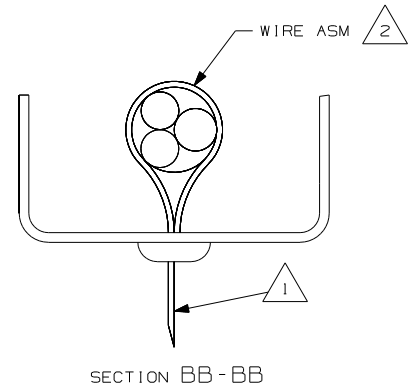
DETAIL BA 12X



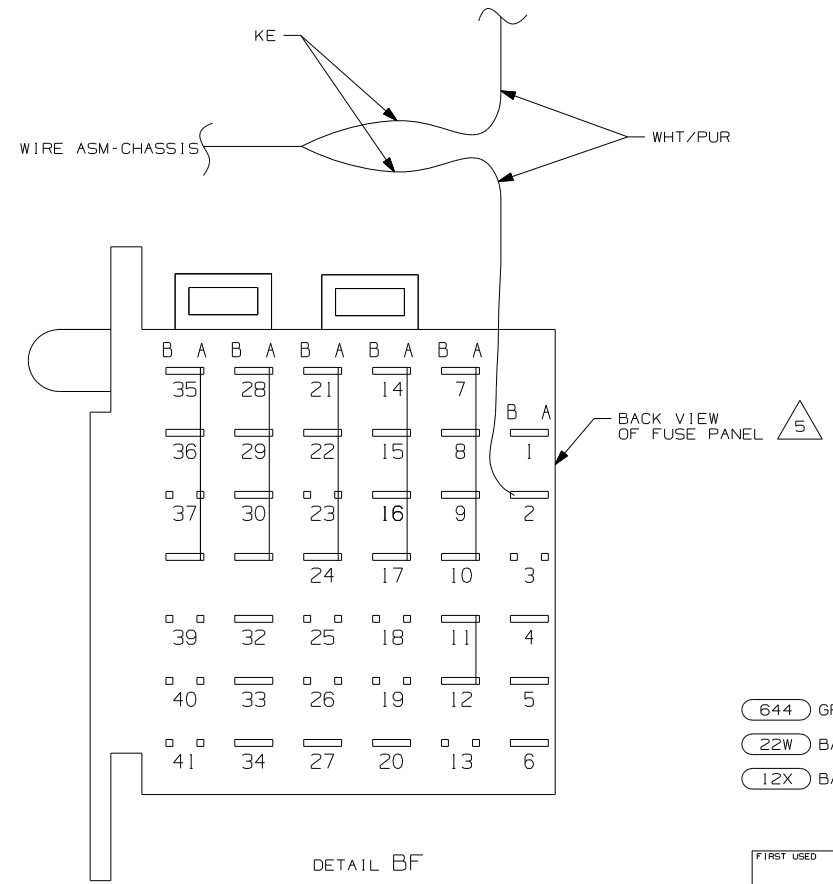
DETAIL BA 22W



DETAIL BA 644



DETAIL BE



DETAIL BF

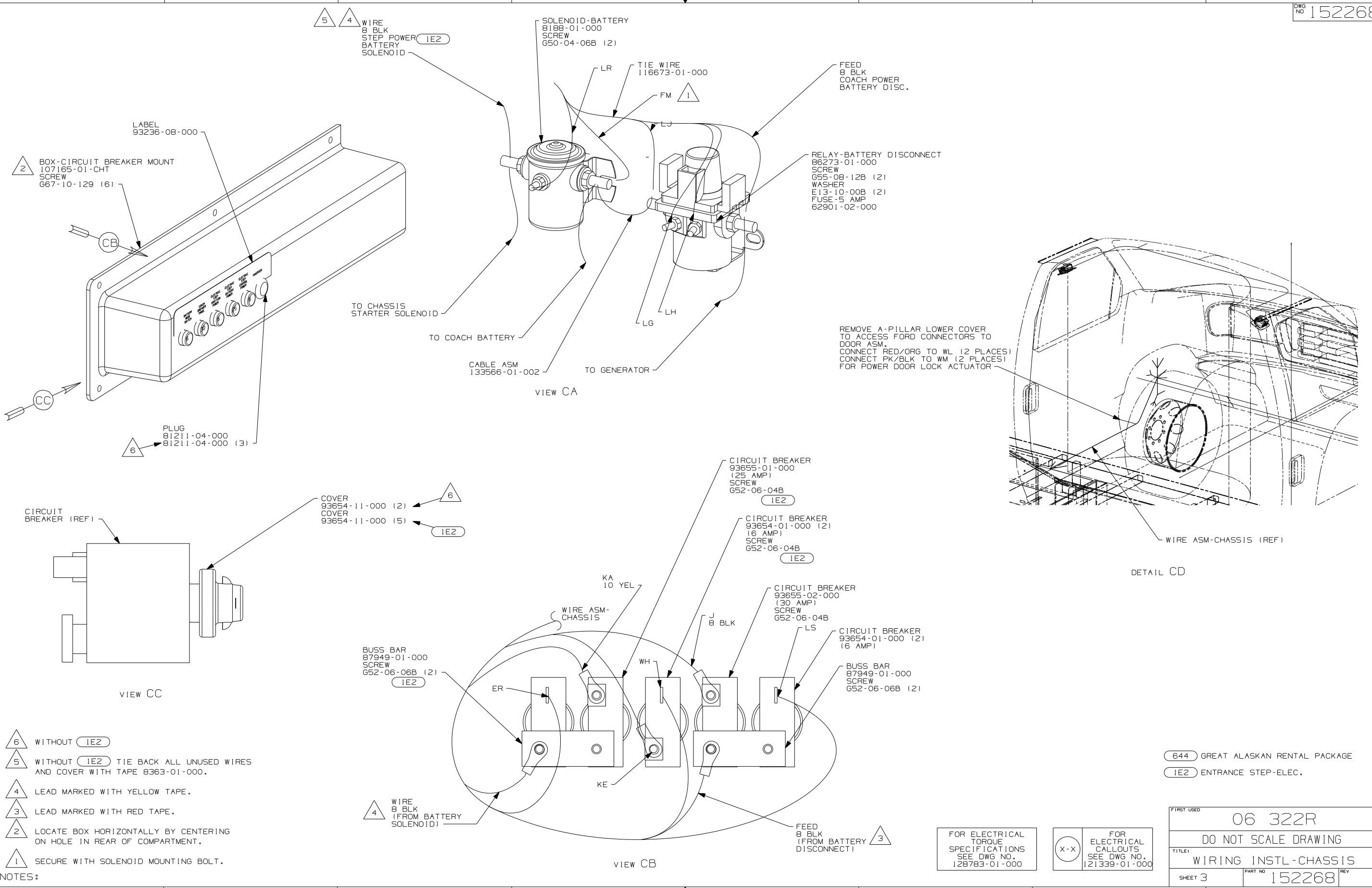
- NOTES:
- 5 CUT WIRES AND RECONNECT AS SHOWN.
 - 4 WIRES TO BE TIED TO CROSSMEMBER USING EXISTING HOLES.
 - 3 WIRES TO BE TIED ON TOP OF RAIL USING EXISTING HOLES.
 - 2 WIRES TO BE TIED INSIDE OF RAIL USING EXISTING HOLES.
 - 1 CUT OFF EXCESS END OF WIRE TIE.

FOR ELECTRICAL TORQUE SPECIFICATIONS SEE DWG NO. 128783-01-000

FOR ELECTRICAL CALLOUTS SEE DWG NO. 121339-01-000

- 644 GREAT ALASKAN RENTAL PACKAGE
- 22W BATTERY-SECOND
- 12X BATTERY-ONE

FIRST USED	06 322R
TITLE	DO NOT SCALE DRAWING
TITLE	WIRING INSTL-CHASSIS
SHEET 2	PART NO 152268 REV



2 BOX-CIRCUIT BREAKER MOUNT
107165-01-CHT
SCREW
667-10-129 (6)

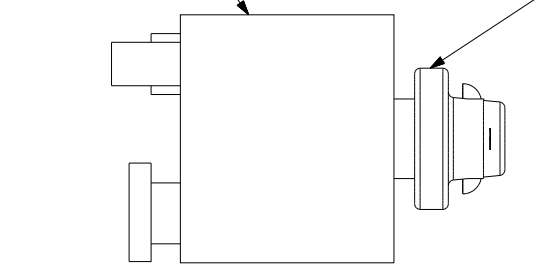
CB

LABEL
93236-08-000

CC

6 PLUG
81211-04-000
81211-04-000 (3)

CIRCUIT BREAKER (REF)



VIEW CC

- NOTES:
- 6 WITHOUT 1E2
 - 5 WITHOUT 1E2 TIE BACK ALL UNUSED WIRES AND COVER WITH TAPE 8363-01-000.
 - 4 LEAD MARKED WITH YELLOW TAPE.
 - 3 LEAD MARKED WITH RED TAPE.
 - 2 LOCATE BOX HORIZONTALLY BY CENTERING ON HOLE IN REAR OF COMPARTMENT.
 - 1 SECURE WITH SOLENOID MOUNTING BOLT.

5 4 WIRE
8 BLK
STEP POWER
BATTERY
SOLENOID

SOLENOID-BATTERY
8188-01-000
SCREW
G50-04-06B (2)

LR TIE WIRE
116673-01-000

FM 1

FEED
8 BLK
COACH POWER
BATTERY DISC.

RELAY-BATTERY DISCONNECT
86273-01-000
SCREW
G55-08-12B (2)
WASHER
E13-10-00B (2)
FUSE-5 AMP
62901-02-000

TO CHASSIS
STARTER SOLENOID

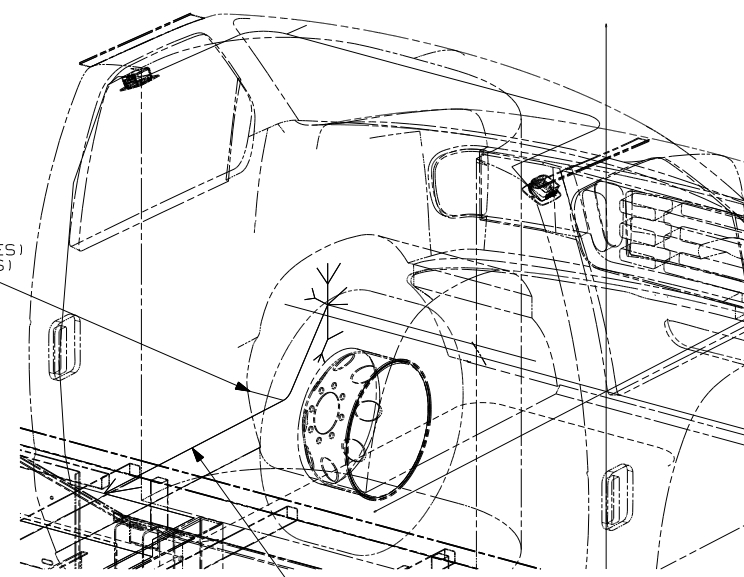
TO COACH BATTERY

CABLE ASM
133566-01-002

TO GENERATOR

VIEW CA

REMOVE A-PILLAR LOWER COVER
TO ACCESS FORD CONNECTORS TO
DOOR ASM.
CONNECT RED/ORG TO WL (2 PLACES)
CONNECT PK/BLK TO WM (2 PLACES)
FOR POWER DOOR LOCK ACTUATOR



DETAIL CD

WIRE ASM-CHASSIS (REF)

6 COVER
93654-11-000 (2)
COVER
93654-11-000 (5)

CIRCUIT BREAKER
93655-01-000
(25 AMP)
SCREW
G52-06-04B
1E2

CIRCUIT BREAKER
93654-01-000 (2)
(16 AMP)
SCREW
G52-06-04B
1E2

CIRCUIT BREAKER
93655-02-000
(30 AMP)
SCREW
G52-06-04B

LS CIRCUIT BREAKER
93654-01-000 (2)
(16 AMP)

BUSS BAR
87949-01-000
SCREW
G52-06-06B (2)

BUSS BAR
87949-01-000
SCREW
G52-06-06B (2)
1E2

KA
10 YEL

WIRE ASM-
CHASSIS

J
8 BLK

WH

ER

KE

FEED
8 BLK
(FROM BATTERY
DISCONNECT)

3

VIEW CB

4 WIRE
8 BLK
(FROM BATTERY
SOLENOID)

FOR ELECTRICAL
TORQUE
SPECIFICATIONS
SEE DWG NO.
128783-01-000

X-X

FOR
ELECTRICAL
CALLOUTS
SEE DWG NO.
121339-01-000

644 GREAT ALASKAN RENTAL PACKAGE
1E2 ENTRANCE STEP-ELEC.

FIRST USED	06 322R
DO NOT SCALE DRAWING	
TITLE:	WIRING INSTL-CHASSIS
SHEET 3	PART NO 152268 REV