



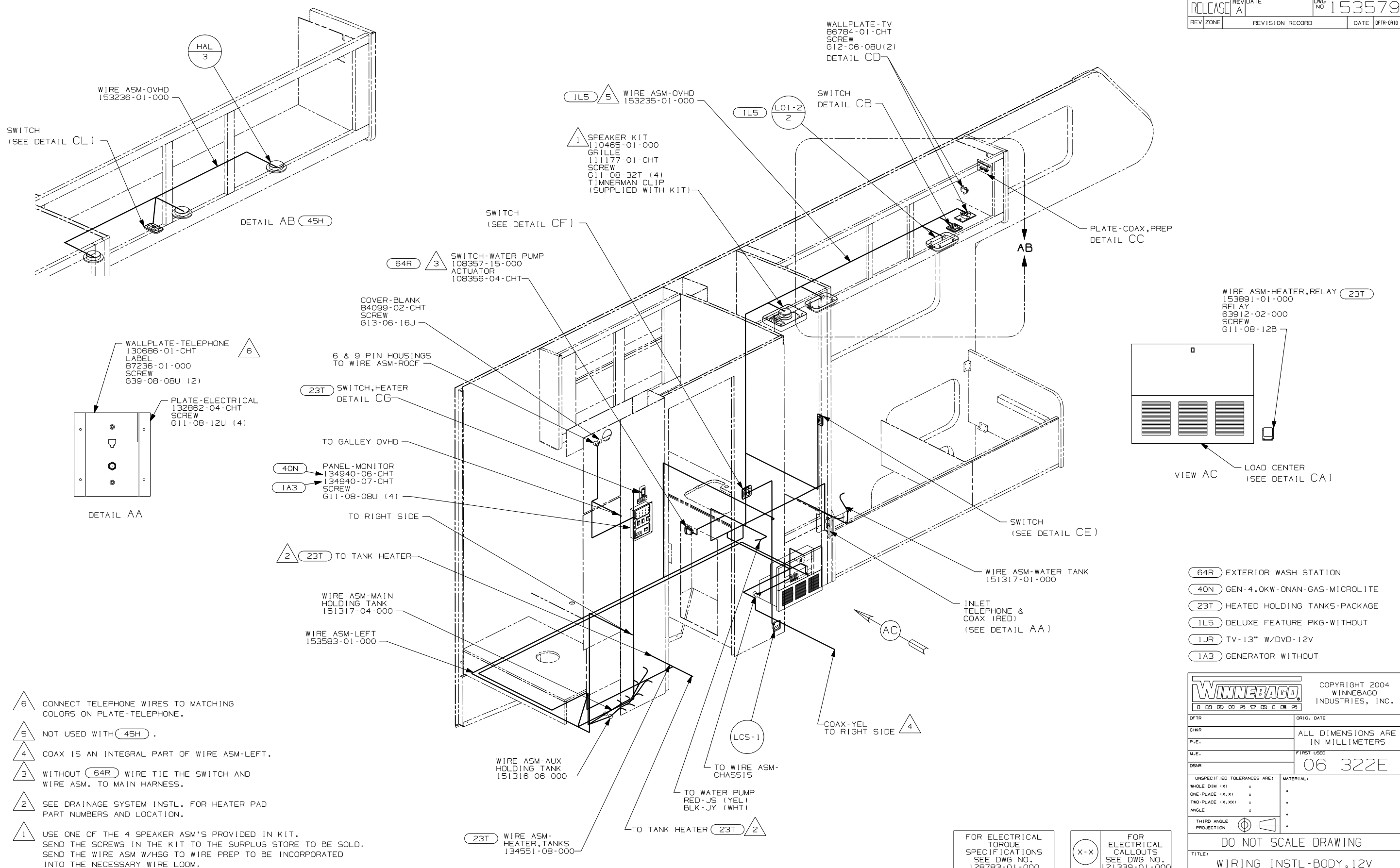
DANGER

Danger of electrical shock, burns or death. Always remove all power sources before attempting any repair, service or diagnostic work. Power can be present from shore power, generator, inverter or battery. All power sources must be disabled and secured before performing any service.



CAUTION

If you lack the skills, tools or equipment to perform diagnostic or repair work leave such work to an authorized Winnebago Industries dealer or other qualified shop.



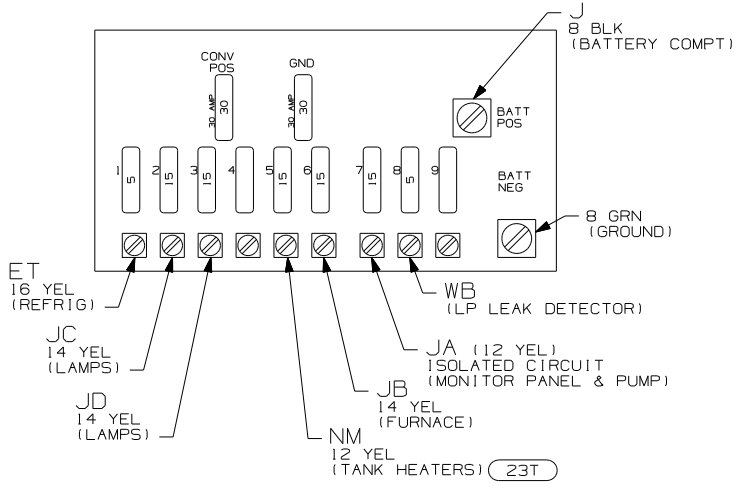
- NOTES:
- △ 6 CONNECT TELEPHONE WIRES TO MATCHING COLORS ON PLATE-TELEPHONE.
 - △ 5 NOT USED WITH (45H).
 - △ 4 COAX IS AN INTEGRAL PART OF WIRE ASM-LEFT.
 - △ 3 WITHOUT (64R) WIRE TIE THE SWITCH AND WIRE ASM. TO MAIN HARNESS.
 - △ 2 SEE DRAINAGE SYSTEM INSTL. FOR HEATER PAD PART NUMBERS AND LOCATION.
 - △ 1 USE ONE OF THE 4 SPEAKER ASM'S PROVIDED IN KIT. SEND THE SCREWS IN THE KIT TO THE SURPLUS STORE TO BE SOLD. SEND THE WIRE ASM W/HSG TO WIRE PREP TO BE INCORPORATED INTO THE NECESSARY WIRE LOOM.

- (64R) EXTERIOR WASH STATION
- (40N) GEN-4.0KW-ONAN-GAS-MICROLITE
- (23T) HEATED HOLDING TANKS-PACKAGE
- (1L5) DELUXE FEATURE PKG-WITHOUT
- (1JR) TV-13" W/DVD-12V
- (1A3) GENERATOR WITHOUT

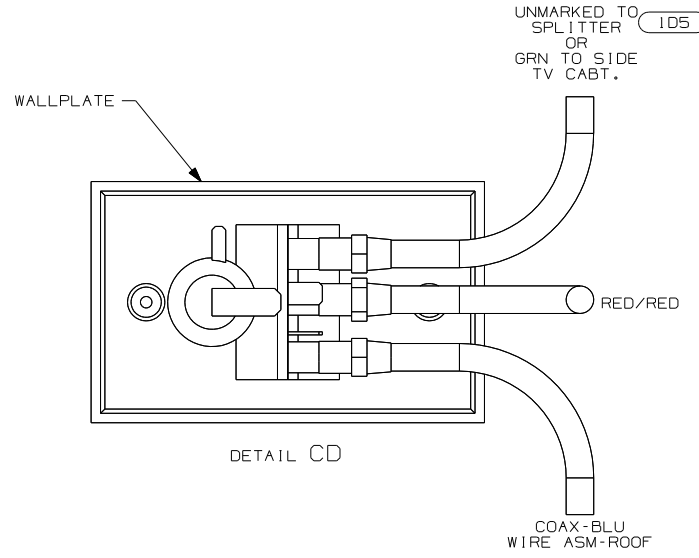
WINNEBAGO		COPYRIGHT 2004 WINNEBAGO INDUSTRIES, INC.	
DFTR	ORIG. DATE		
CHKR	ALL DIMENSIONS ARE IN MILLIMETERS		
P.E.	FIRST USED	06 322E	
M.E.			
DSNR			
UNSPECIFIED TOLERANCES ARE:		MATERIAL:	
WHOLE DIM (X)	:		*
ONE-PLACE (X.X)	:		*
TWO-PLACE (X.XX)	:		*
ANGLE	:		*
THIRD ANGLE PROJECTION		DO NOT SCALE DRAWING	
TITLE: WIRING INSTL-BODY,12V			
SHEET 1 OF 5	PART NO	153579	
REF:		1 10/17/2005	

FOR ELECTRICAL TORQUE SPECIFICATIONS SEE DWG NO. 128783-01-000

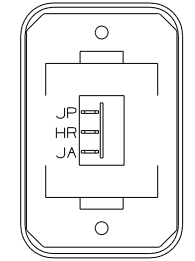
(X-X) FOR ELECTRICAL CALLOUTS SEE DWG NO. 121339-01-000



DETAIL CA 3

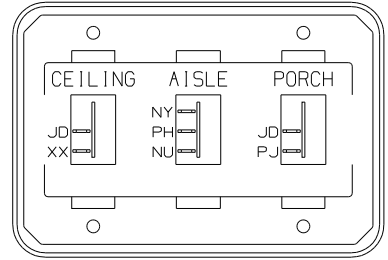


DETAIL CD



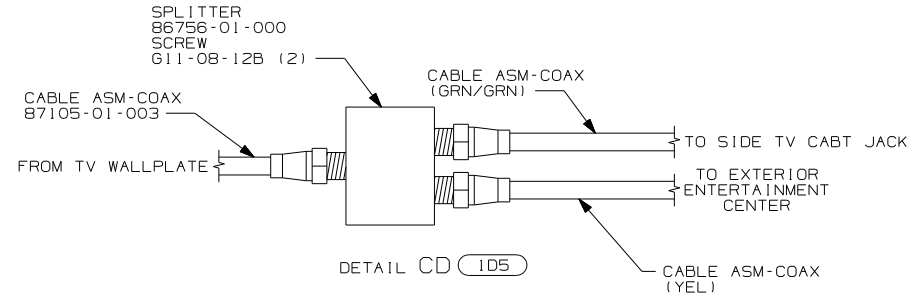
DETAIL CG 23T

- SWITCH-ROCKER 135740-06-CHT
- SWITCH-BASE 135741-01-CHT
- SWITCH-BEZEL 135742-01-CHT
- SCREW 611-08-08U (2)

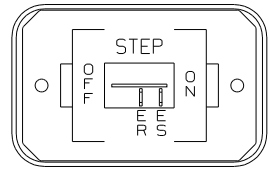


DETAIL CH

- SWITCH-ROCKER 135740-01-CHT (2)
- SWITCH-BASE 135742-02-000
- SWITCH-BEZEL 135741-03-CHT
- SWITCH-BEZEL 135742-26-CHT
- SCREW 611-08-08U (4)

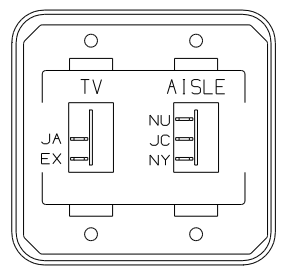


DETAIL CD 1D5



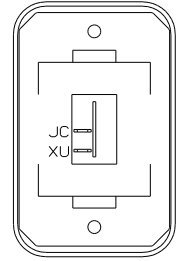
DETAIL CJ 1E2

- SWITCH-ROCKER 135740-01-CHT
- SWITCH-BASE 135741-01-CHT
- SWITCH-BEZEL 135742-11-CHT
- SCREW 611-08-08U (2)



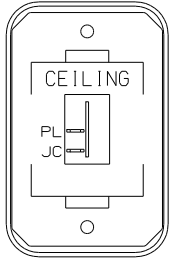
DETAIL CB 1JR

- SWITCH-ROCKER 135740-01-CHT
- SWITCH-ROCKER 135740-02-CHT
- SWITCH-BASE 135741-02-CHT
- SWITCH-BEZEL 135742-44-CHT
- SCREW 611-06-16U (4)



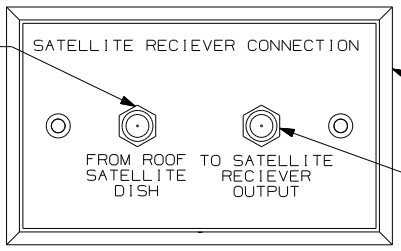
DETAIL CK

- SWITCH-ROCKER 135740-01-CHT
- SWITCH-BASE 135741-01-CHT
- SWITCH-BEZEL 135742-01-CHT
- SCREW 611-08-08U (2)



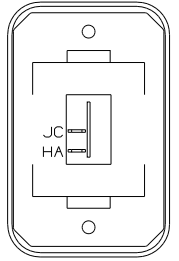
DETAIL CE

- SWITCH-ROCKER 135740-01-CHT
- SWITCH-BASE 135741-01-CHT
- SWITCH-BEZEL 135742-07-CHT
- SCREW 611-08-08U (2)



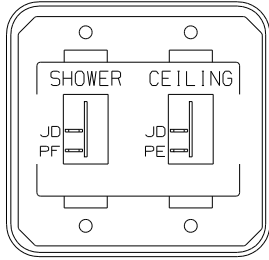
DETAIL CC

- PLATE-WALL 149557-05-CHT
- SCREW 667-10-08U (2)
- COAX-ORG/ORG WIRE ASM-LEFT 2
- COAX-RED WIRE ASM-LEFT 1



DETAIL CL 45H

- SWITCH-ROCKER 135740-01-CHT
- SWITCH-BASE 135741-01-CHT
- SWITCH-BEZEL 135742-01-CHT
- SCREW 611-08-08U (2)



DETAIL CF

- SWITCH-ROCKER 135740-01-CHT (2)
- SWITCH-BASE 135741-02-CHT
- SWITCH-BEZEL 135742-15-CHT
- SCREW 611-08-08U (4)

FOR ELECTRICAL TORQUE SPECIFICATIONS SEE DWG NO. 128783-01-000

FOR ELECTRICAL CALLOUTS SEE DWG NO. 121339-01-000

- 45H DELUXE FEATURE PACKAGE
- 23T HEATED HOLDING TANKS-PACKAGE
- 1JR TV-13" W/DVD-12V
- 1E2 ENTRANCE STEP-ELEC.
- 1D5 ENTERTAINMENT CENTR/EXT W/CD

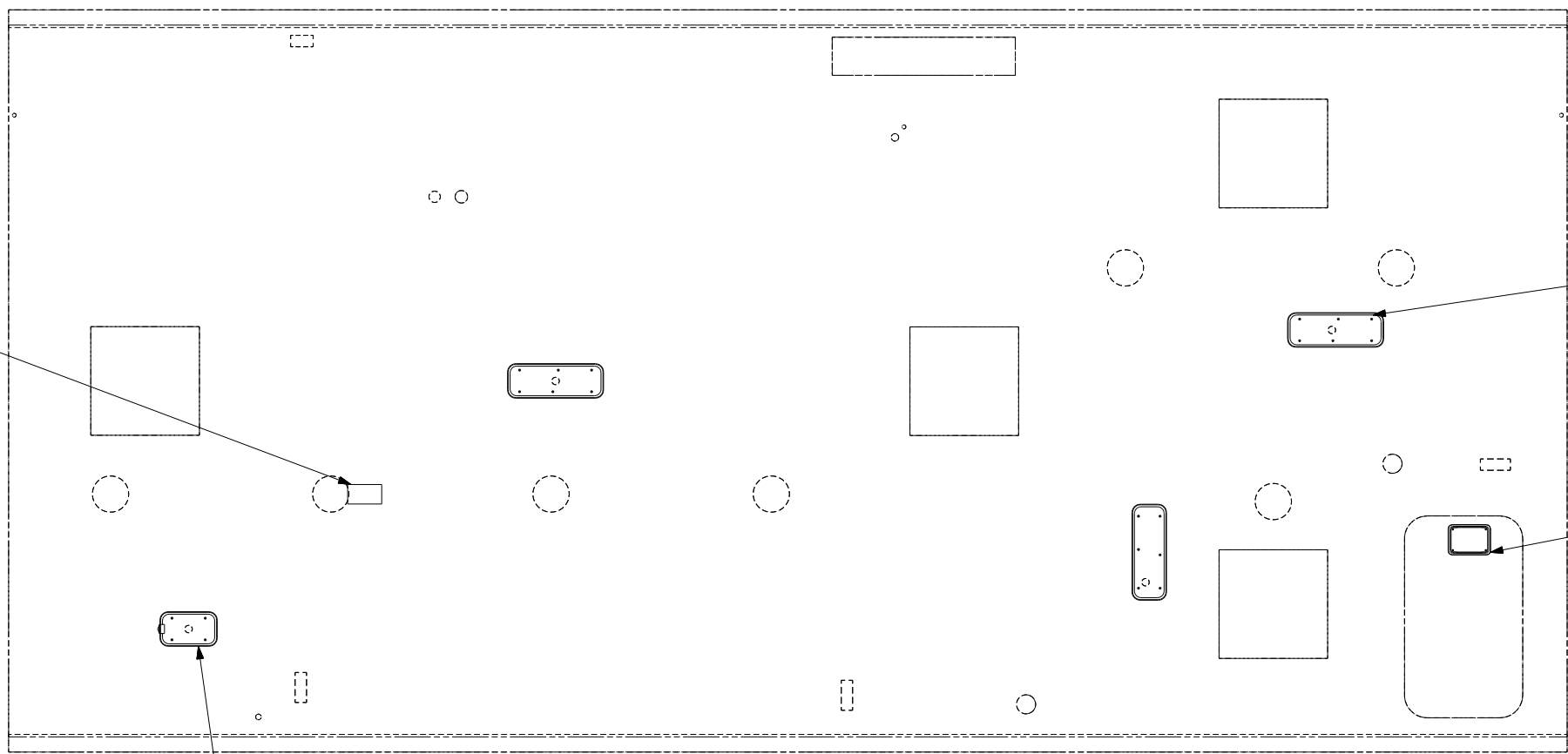
- 3 FOR REFERENCE ONLY. SEE LOAD CENTER/ATS FOR ADDITIONAL INFORMATION.
- 2 CONNECT COAX TO FRONTSIDE OF WALLPLATE.
- 1 CONNECT COAX TO BACKSIDE OF WALLPLATE.

NOTES:

FIRST USED	06 322E
DO NOT SCALE DRAWING	
TITLE:	WIRING INSTL-BODY, 12V
SHEET 3	PART NO 153579

8 7 6 5 4 3 2 1

D
C
B
A



480 SATELLITE ELEVATION SENSOR (SEE DETAIL EB)

LFSN2 3

L01-2

LSH-1

480 SATELLITE DISH & ELEV. SENSOR

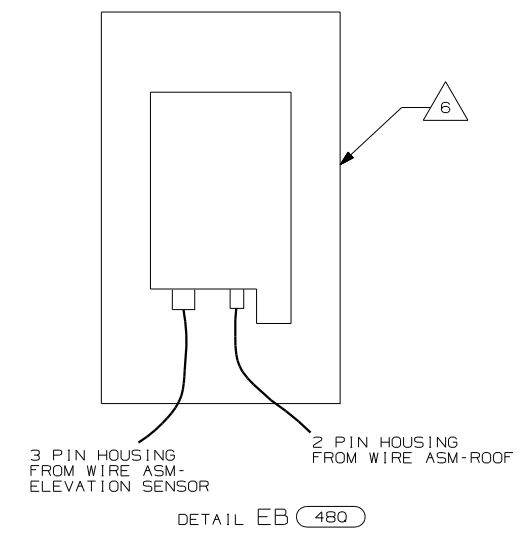
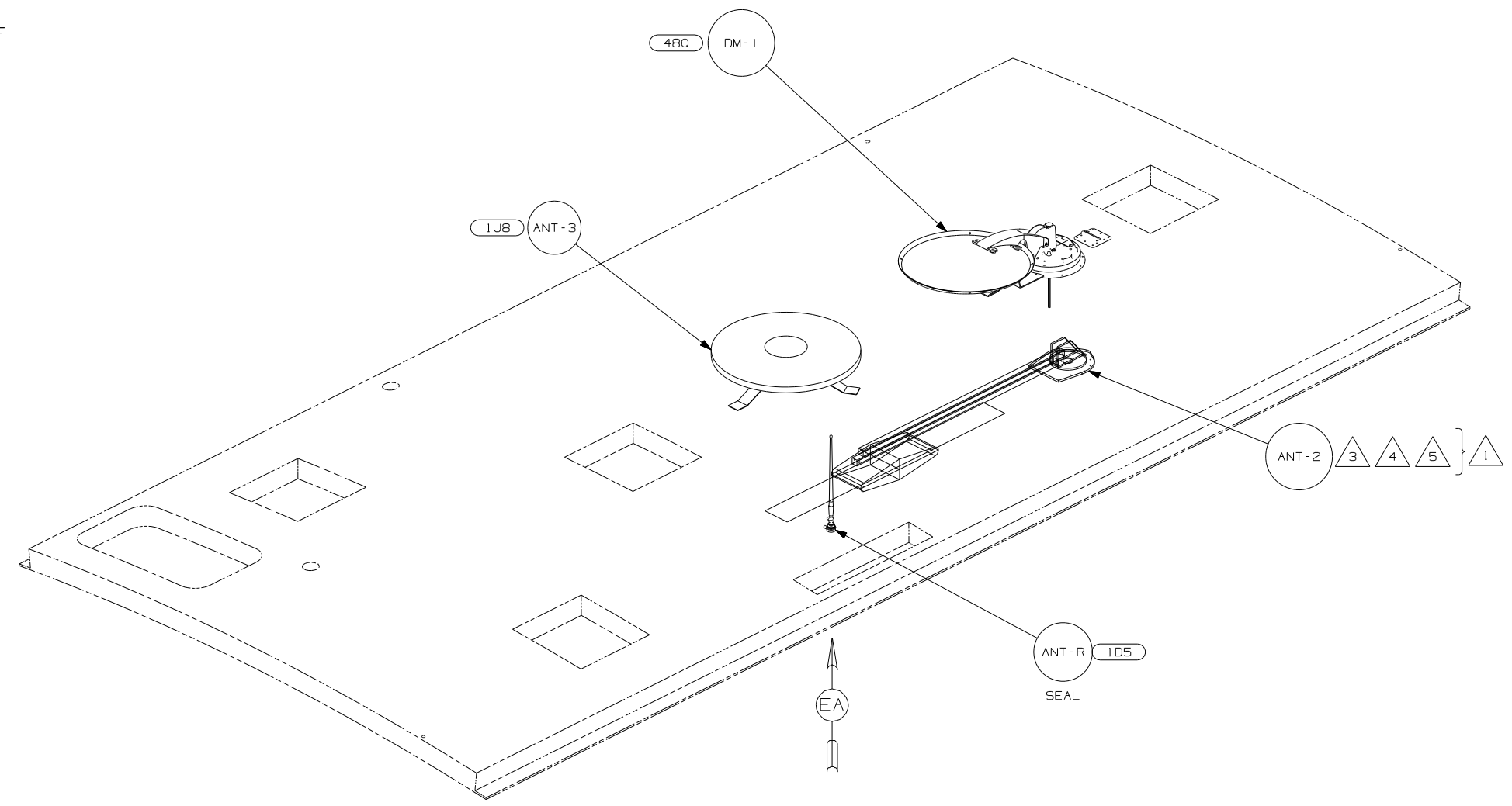
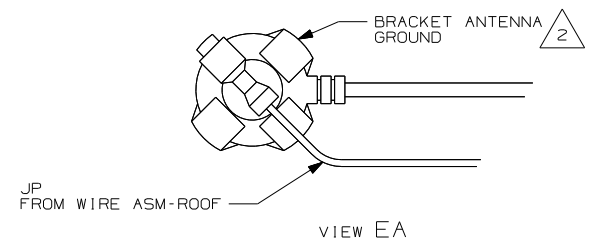
NOTES:
1. SEE ROOF ASM FOR ADDITIONAL INFORMATION.

FOR ELECTRICAL TORQUE SPECIFICATIONS SEE DWG NO. 128783-01-000

(X-X) FOR ELECTRICAL CALLOUTS SEE DWG NO. 121339-01-000

FIRST USED	06 322E
DO NOT SCALE DRAWING	
TITLE:	WIRING INSTL-BODY, 12V
SHEET 4	PART NO 153579

8 7 6 5 4 3 2 1



- NOTES:
- $\triangle 6$ SENSOR SUPPLIED WITH SATELLITE ASSEMBLY.
 - $\triangle 5$ ADD RUBBER BUMPERS TO ROOF UNDER EACH END OF ANTENNA IN DOWN POSITION.
 - $\triangle 4$ LOCATE CLIP TO RETAIN CABLE BUT NOT TO RESTRICT ANTENNA.
 - $\triangle 3$ SEE DRAWING 76319-01-000 FOR INSTALLATION OF TV ANTENNA.
 - $\triangle 2$ WRAP BRACKET LEGS AROUND ANTENNA BASE.
 - $\triangle 1$ NOT USED WITH (1J8)

- (480) SATELLITE DISH & ELEV. SENSOR
- (1J8) TV ANTENNA-OMNIDIRECTIONAL
- (1D5) ENTERTAINMENT CTR/EXT W/CD

FOR ELECTRICAL TORQUE SPECIFICATIONS SEE DWG NO. 128783-01-000

(X-X) FOR ELECTRICAL CALLOUTS SEE DWG NO. 121339-01-000

FIRST USED	06 322E
DO NOT SCALE DRAWING	
TITLE:	WIRING INSTL-BODY, 12V
SHEET 5	PART NO 153579