



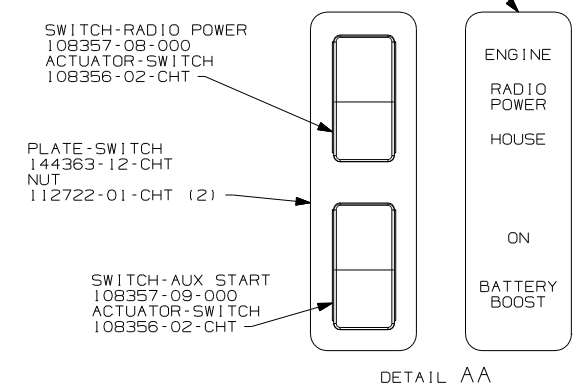
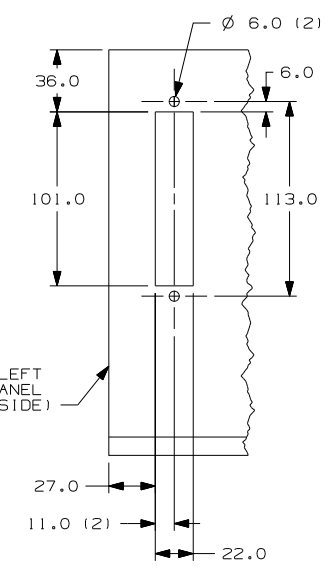
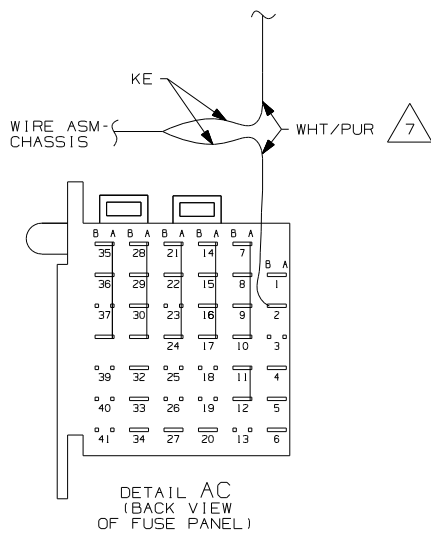
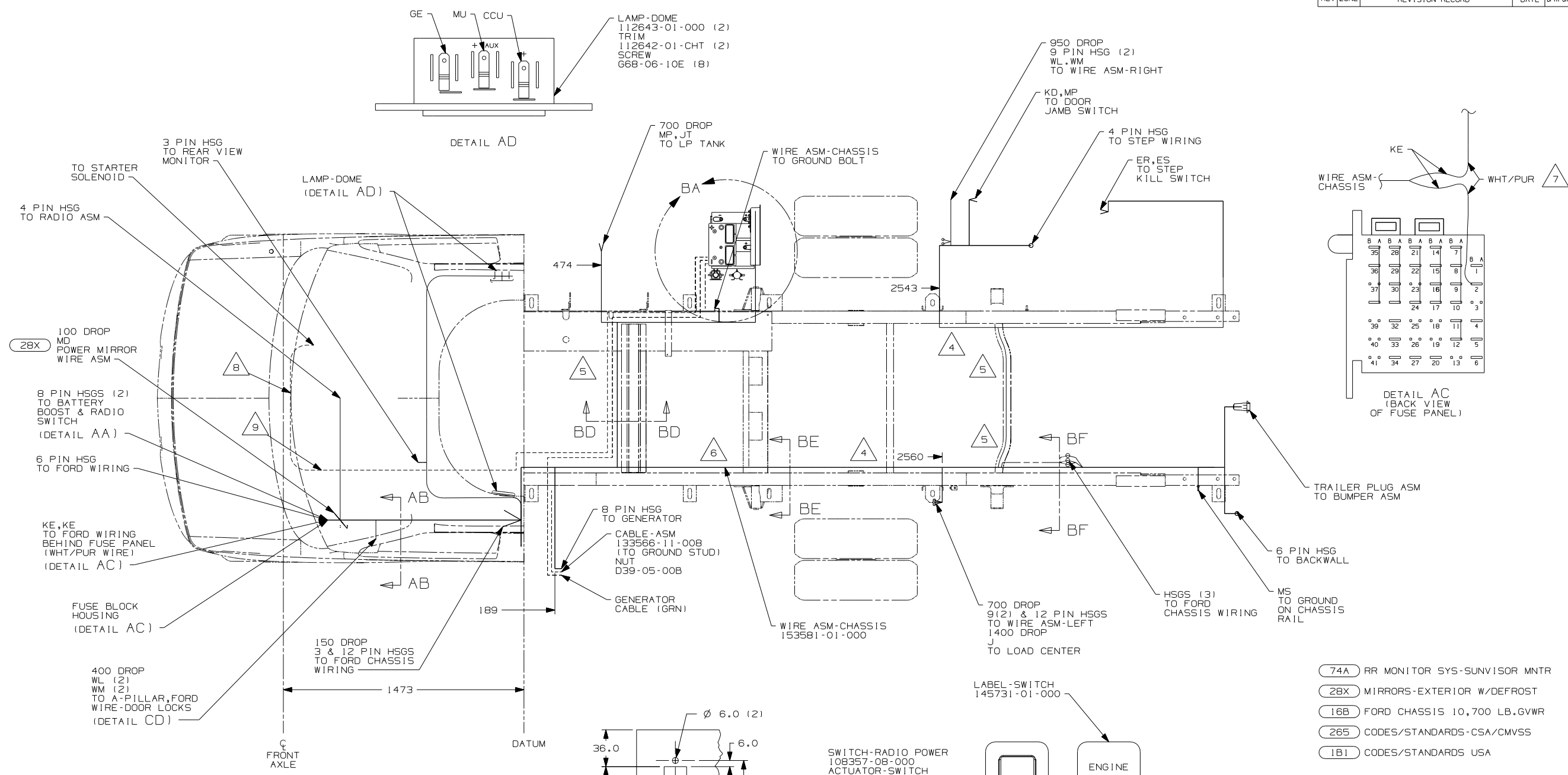
**DANGER**

**Danger of electrical shock, burns or death.** Always remove all power sources before attempting any repair, service or diagnostic work. Power can be present from shore power, generator, inverter or battery. All power sources must be disabled and secured before performing any service.



**CAUTION**

If you lack the skills, tools or equipment to perform diagnostic or repair work leave such work to an authorized Winnebago Industries dealer or other qualified shop.

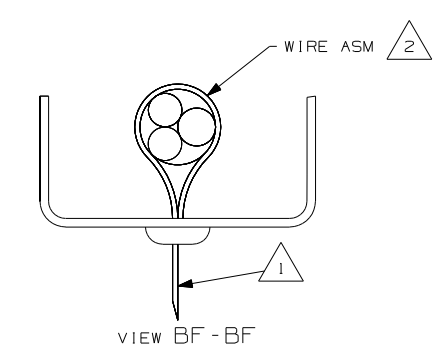
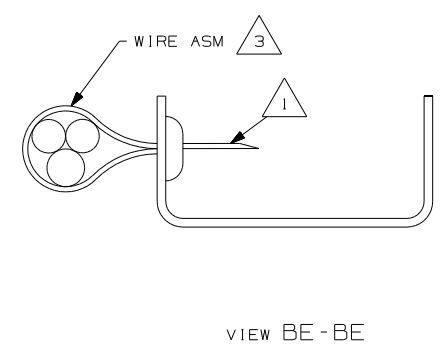
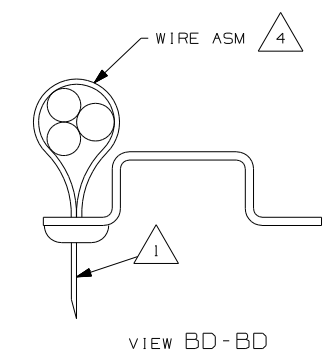
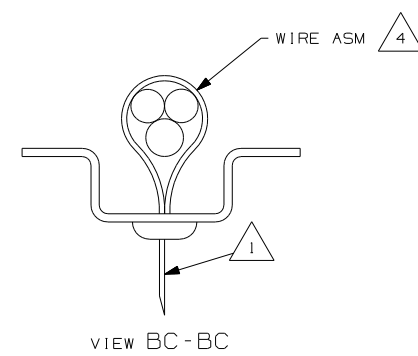
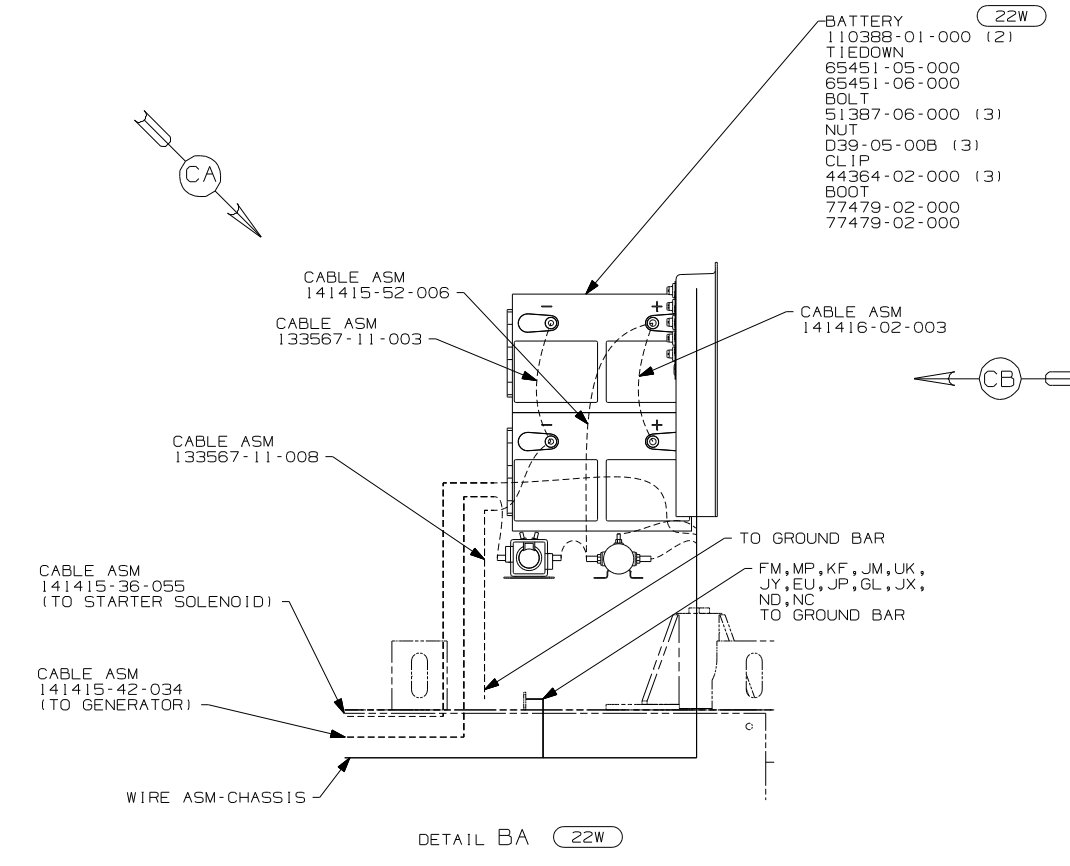
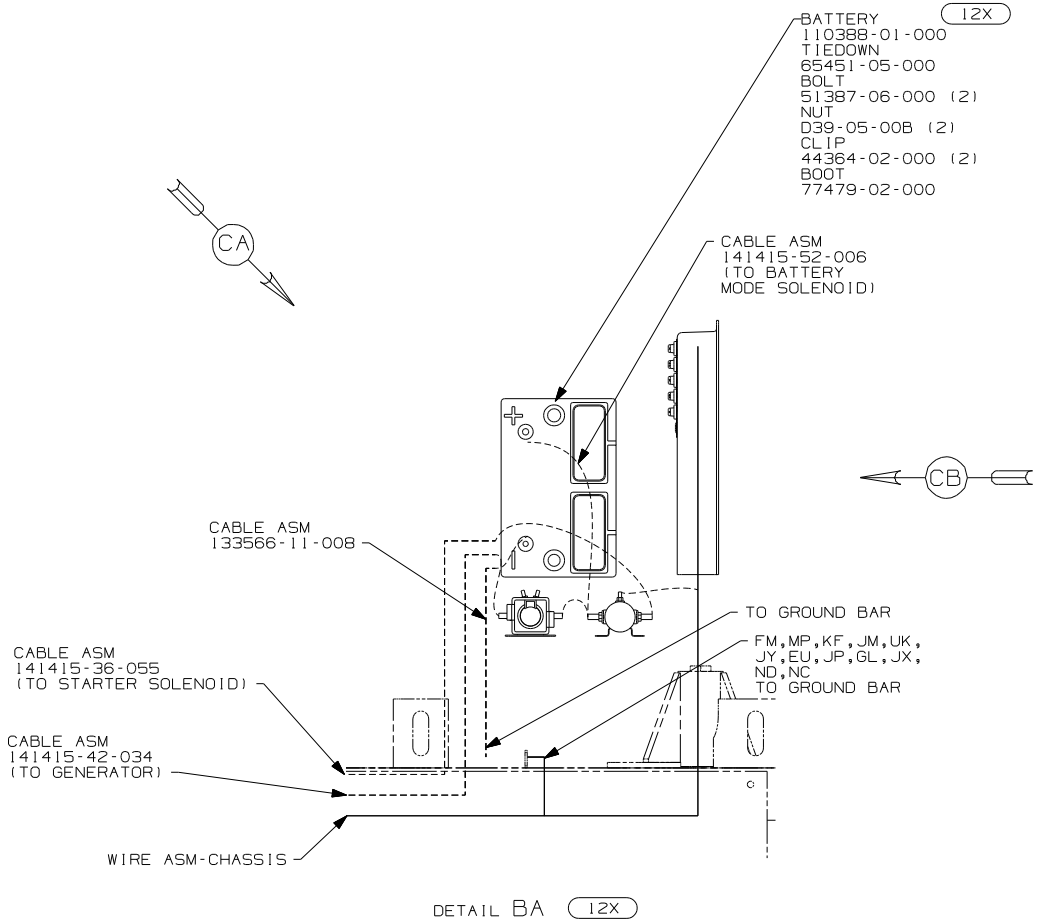


FOR ELECTRICAL TORQUE SPECIFICATIONS SEE DWG NO. 128783-01-000

FOR ELECTRICAL CALLOUTS SEE DWG NO. 121339-01-000

- 9 ROUTE WIRE WITH EXISTING WIRES IN THIS AREA.
- 8 SECURE TO ENGINE CROSSMEMBER.
- 7 CUT WIRE AND RECONNECT AS SHOWN.
- 6 WIRES TO BE TIED INSIDE OF RAIL USING EXISTING HOLE
- 5 WIRES TO BE TIES TO CROSSMEMBER USING EXISTING HOLES
- 4 WIRES TO BE TIES ON TOP OF RAIL USING EXISTING HOLES.
3. USE WITH TIES 8343-04-000 AND 116673-01-000 APPROXIMATELY 600mm ON CENTER UNLESS OTHERWISE SPECIFIED.
2. SECURE CONDUIT 41953, TAB AS REQUIRED, OVER ALL WIRES IN CONTACT WITH SHARP EDGES.
1. LEGEND: — WINNEBAGO: - - - - - CABLE: - - - - - CHASSIS SUPPLIED WIRING.
- NOTES:

DFTR	ORIG. DATE
CHKR	ALL DIMENSIONS ARE IN MILLIMETERS
P.E.	
M.E.	FIRST USED
DSNR	06 322E
UNSPECIFIED TOLERANCES ARE: MATERIAL:	
HOLE DIM (X)	: 1 *
ONE-PLACE (X, X)	: 1.5 *
TWO-PLACE (X, XX)	: 0.50 *
ANGLE	: 1° *
THIRD ANGLE PROJECTION	
DO NOT SCALE DRAWING	
TITLE: WIRING INSTL-CHASSIS	
SHEET 1 OF 3	PART NO 153578 REV
REF:	1 6/15/2006



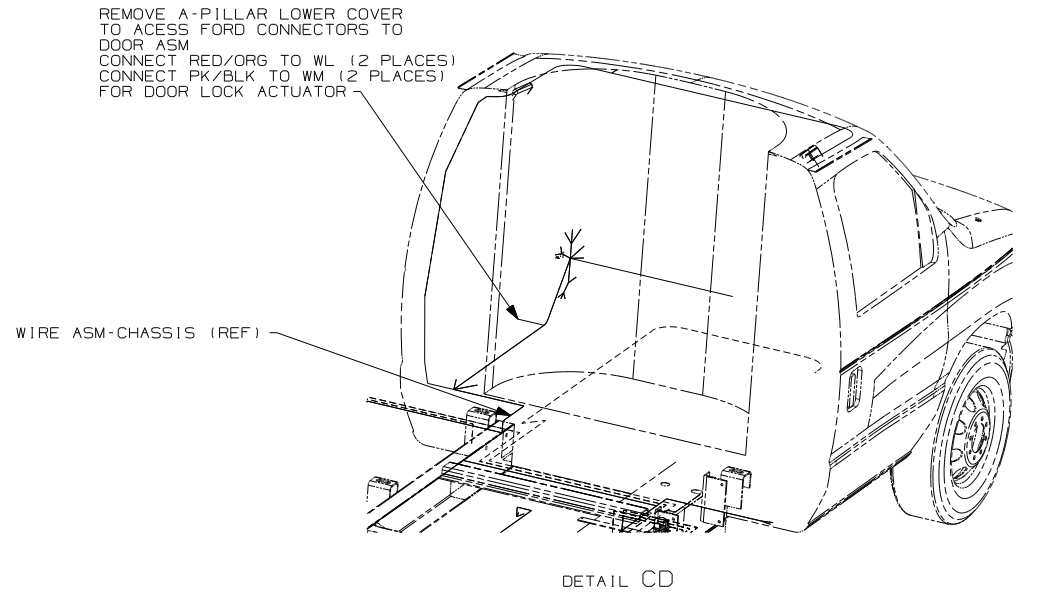
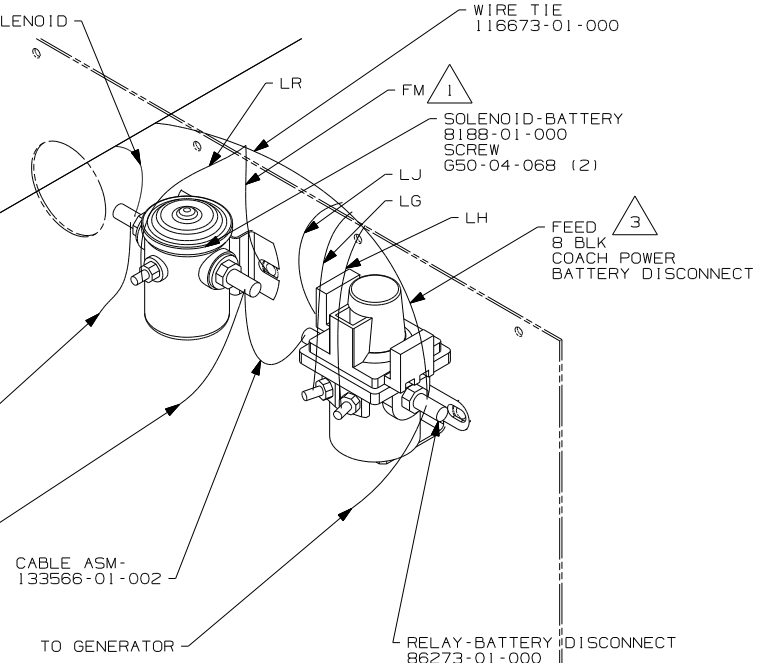
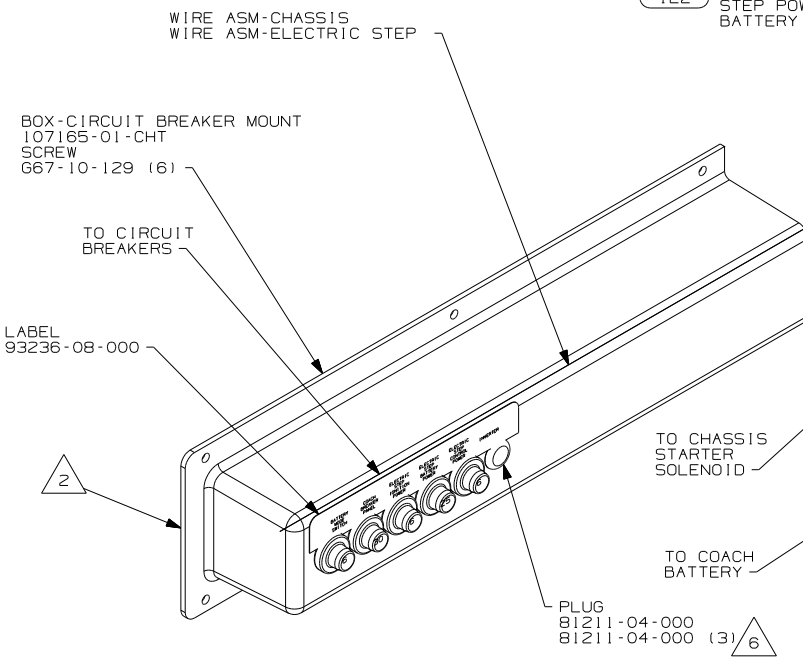
- NOTES:**
- 4 WIRES TO BE TIED TO CROSSMEMBER USING EXISTING HOLES.
  - 3 WIRES TO BE TIED ON TOP OF RAIL USING EXISTING HOLES.
  - 2 WIRES TO BE TIED INSIDE OF RAIL USING EXISTING HOLES.
  - 1 CUT OFF EXCESS WIRE TIE.

FOR ELECTRICAL  
 TORQUE  
 SPECIFICATIONS  
 SEE DWG NO.  
 128783-01-000

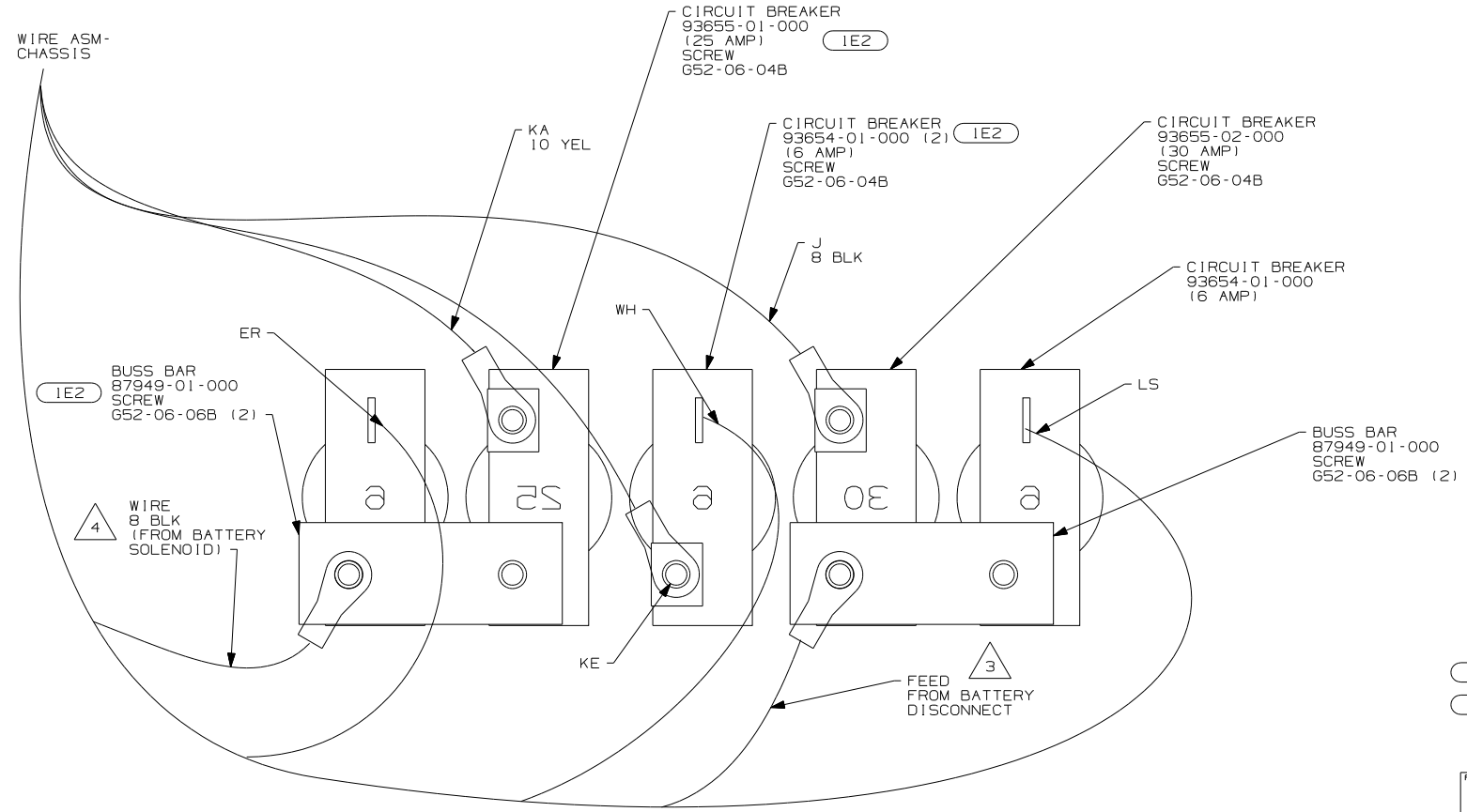
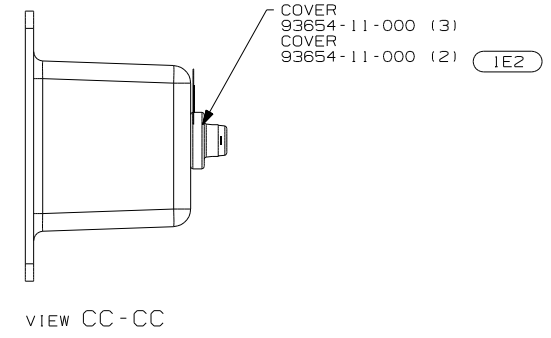
(X-X)  
 FOR  
 ELECTRICAL  
 CALLOUTS  
 SEE DWG NO.  
 121339-01-000

22W BATTERY-SECOND  
 12X BATTERY-ONE

FIRST USED		IB1 265	
06 322E			
DO NOT SCALE DRAWING			
TITLE: WIRING INSTL-CHASSIS			
SHEET 2	PART NO	153578	



VIEW CA-CA



VIEW CB-CB

- NOTES:
- 6 WITHOUT 1E2.
  - 5 WITHOUT 1E2 TIE BACK ALL UNUSED WIRES AND COVER WITH TAPE 8363-01-000.
  - 4 LEAD MARKED WITH YELLOW TAPE.
  - 3 LEAD MARKED WITH RED TAPE.
  - LOCATE BOX HORIZONTALLY BY CENTERING ON HOLE IN REAR OF COMPARTMENT.
  - 2
  - 1 SECURE WITH SOLENOID MOUNTING BOLT.

265 CODES/STANDARDS - CSA/CMVSS  
1B1 CODES/STANDARDS - USA

FOR ELECTRICAL TORQUE SPECIFICATIONS SEE DWG NO. 128783-01-000

FOR ELECTRICAL CALLOUTS SEE DWG NO. 121339-01-000

FIRST USED	06 322E
TITLE	DO NOT SCALE DRAWING
WIRING INSTL-CHASSIS	
SHEET 3	PART NO 153578