



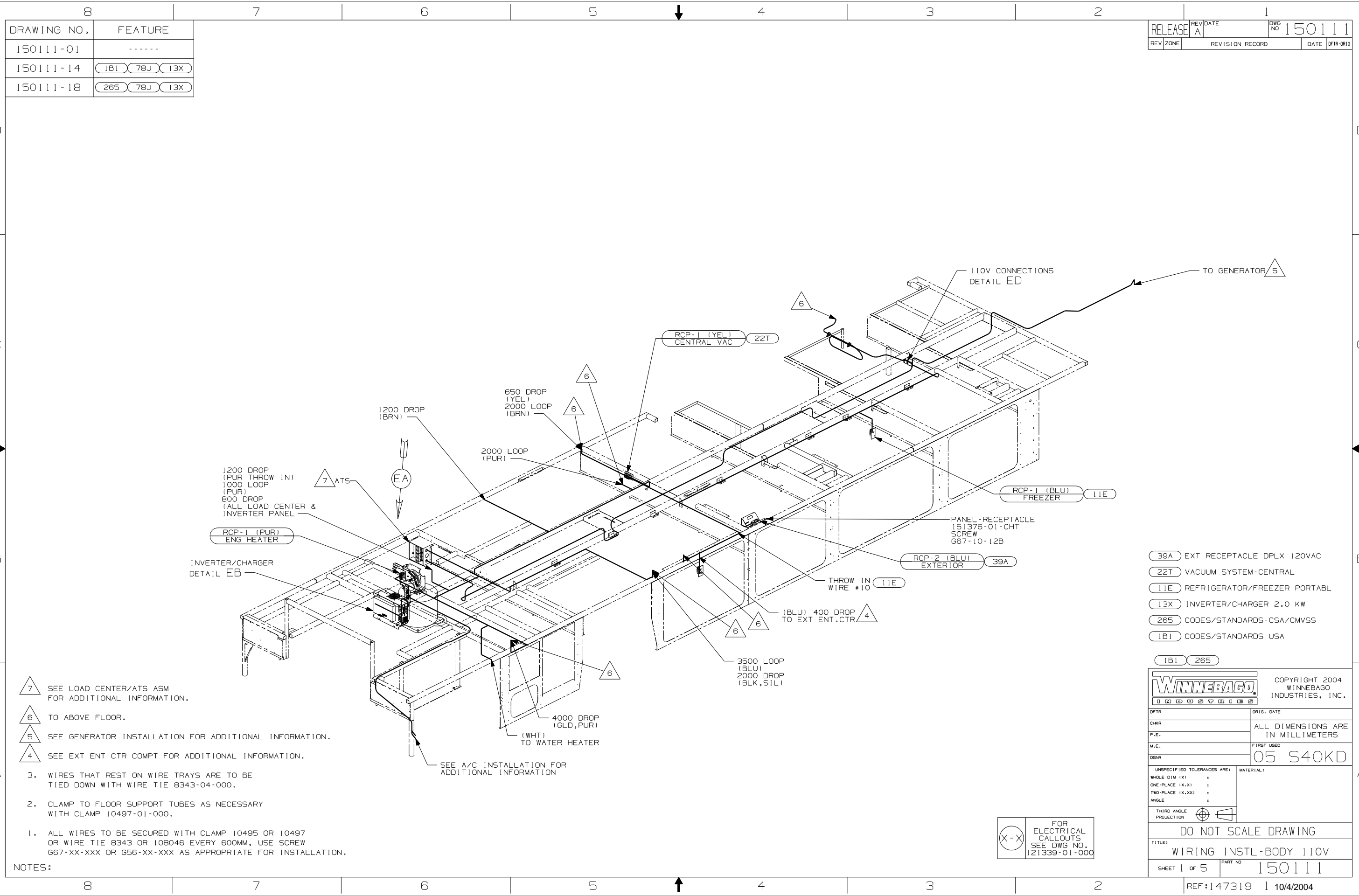
DANGER

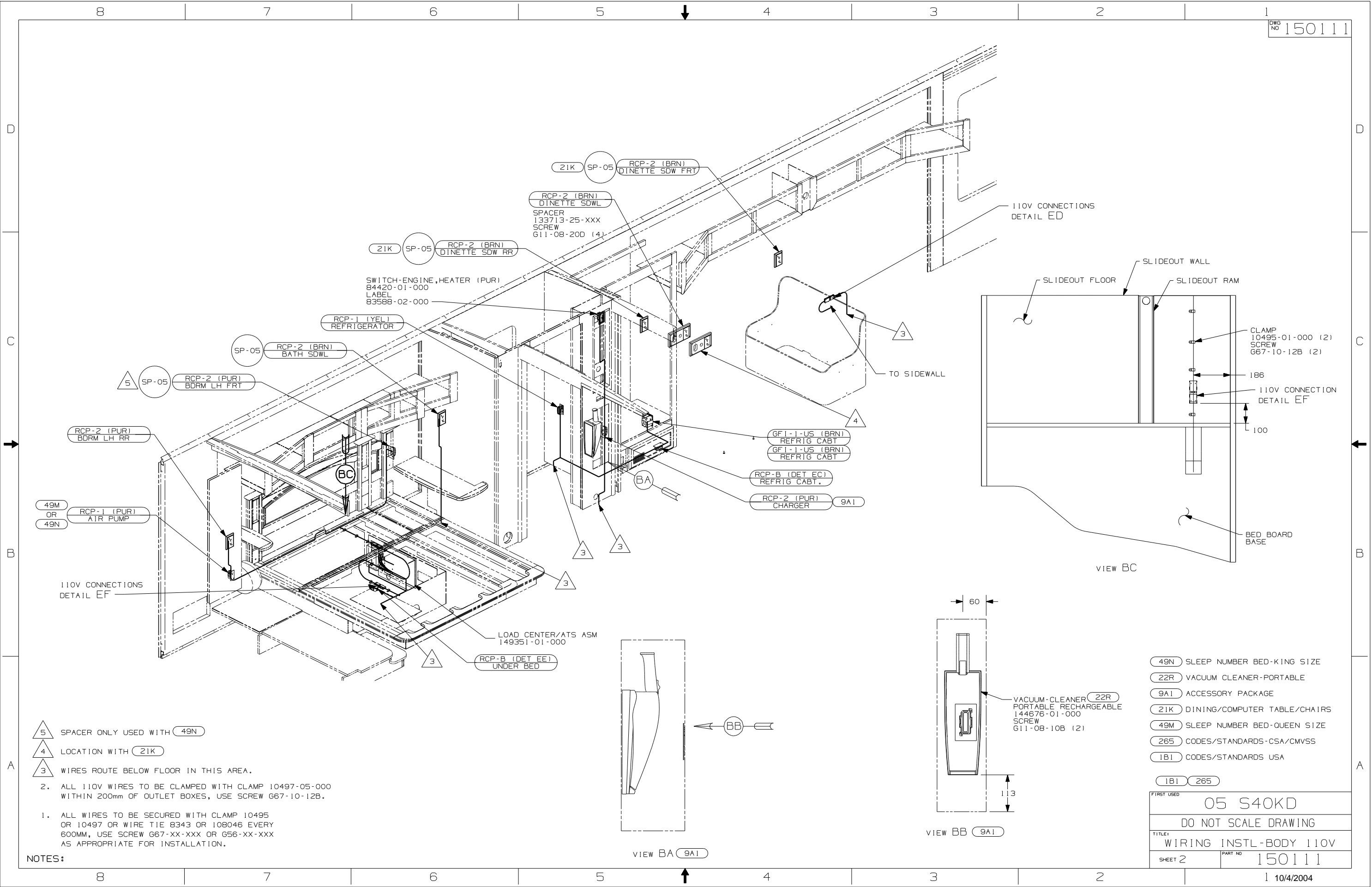
Danger of electrical shock, burns or death. Always remove all power sources before attempting any repair, service or diagnostic work. Power can be present from shore power, generator, inverter or battery. All power sources must be disabled and secured before performing any service.



CAUTION

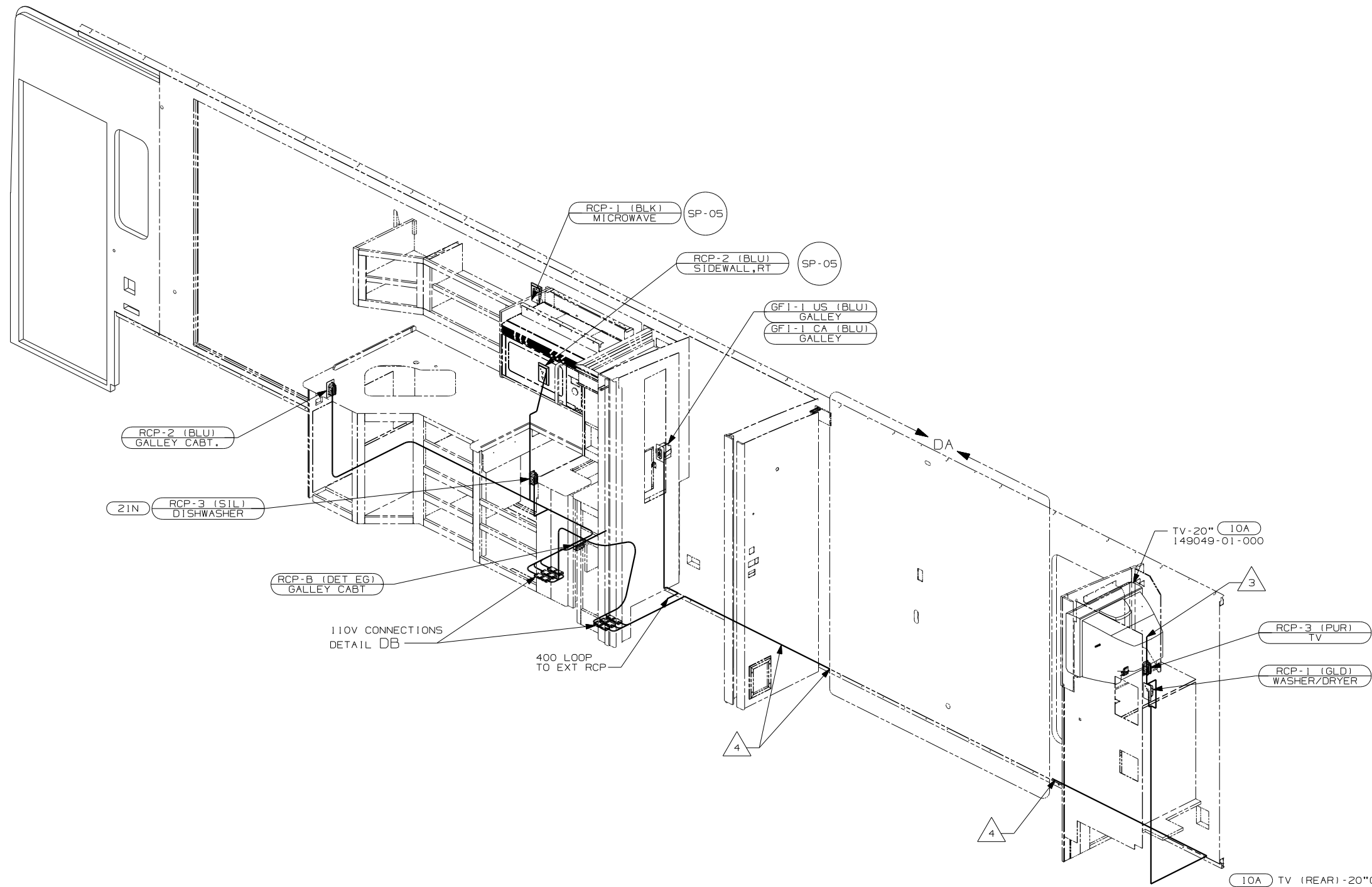
If you lack the skills, tools or equipment to perform diagnostic or repair work leave such work to an authorized Winnebago Industries dealer or other qualified shop.





- | | |
|-----|------------------------------|
| 49N | SLEEP NUMBER BED-KING SIZE |
| 22R | VACUUM CLEANER-PORTABLE |
| 9A1 | ACCESSORY PACKAGE |
| 21K | DINING/COMPUTER TABLE/CHAIRS |
| 49M | SLEEP NUMBER BED-QUEEN SIZE |
| 265 | CODES/STANDARDS-CSA/CMVSS |
| 1B1 | CODES/STANDARDS USA |

IB1		265	
FIRST USED			
05 S40KD			
DO NOT SCALE DRAWING			
TITLE:			
WIRING INSTL - BODY 110V			
SHEET 2		PART NO	150111



- △ 4 TO BELOW FLOOR.
 △ 3 WIRE FROM ROOF ASM.

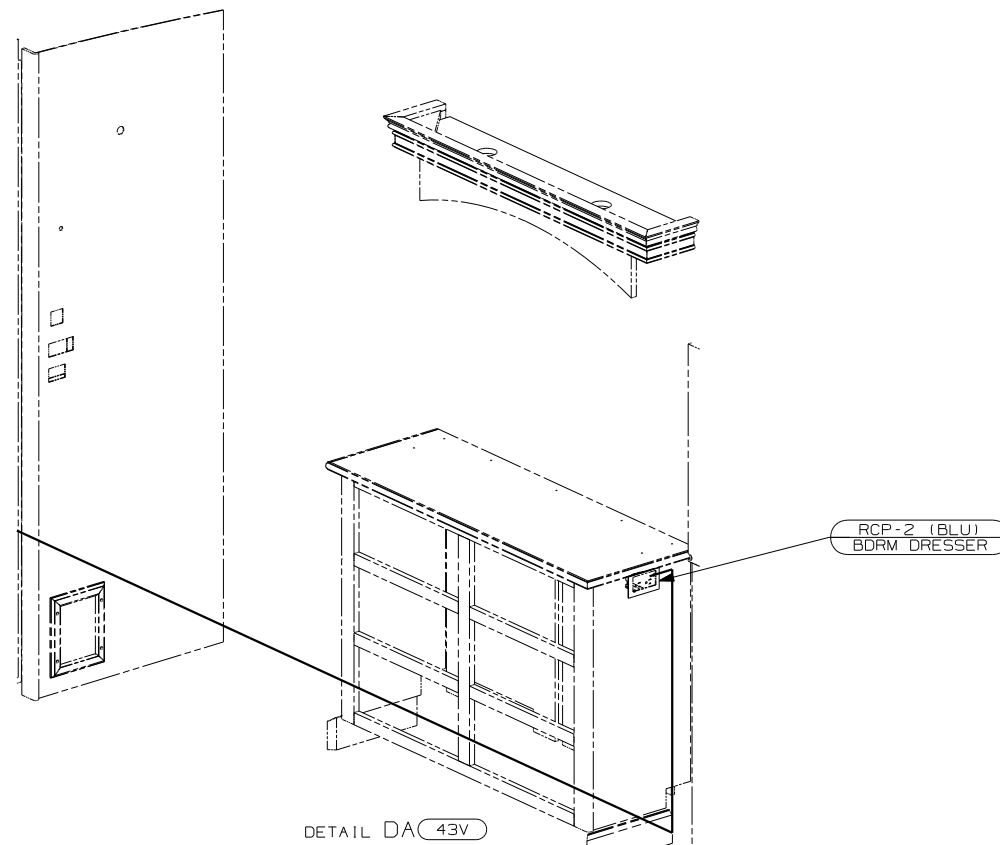
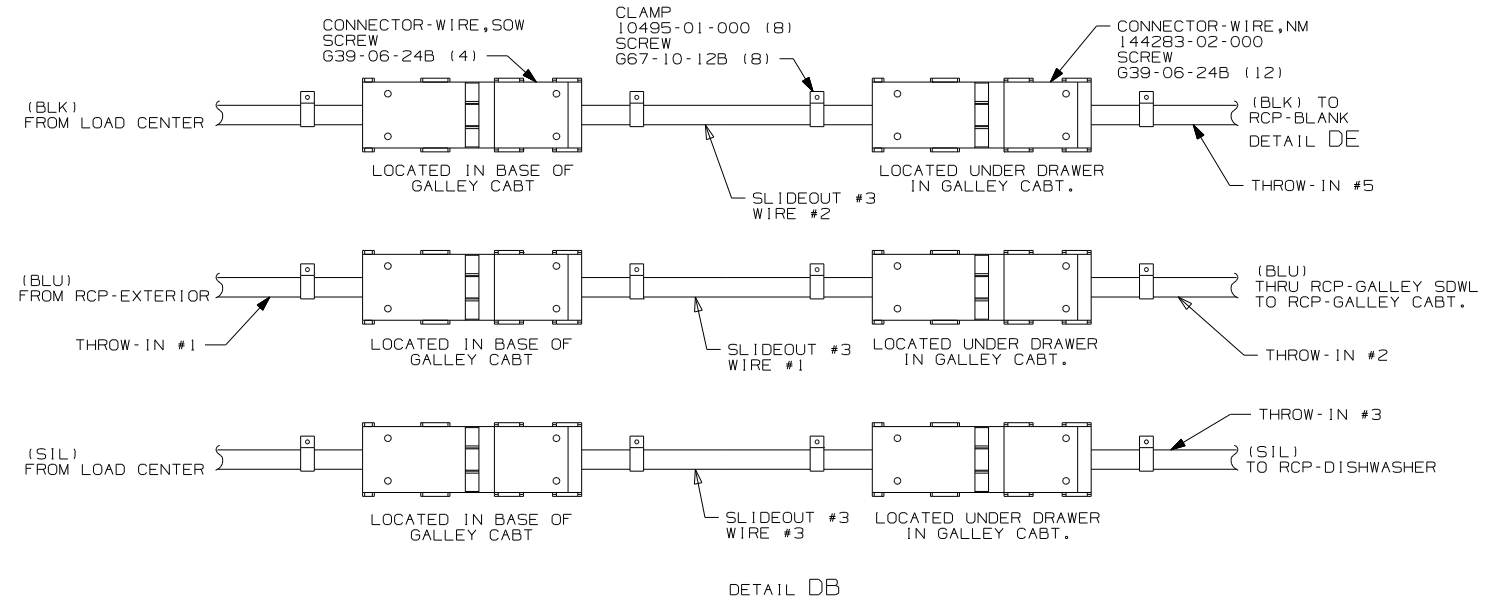
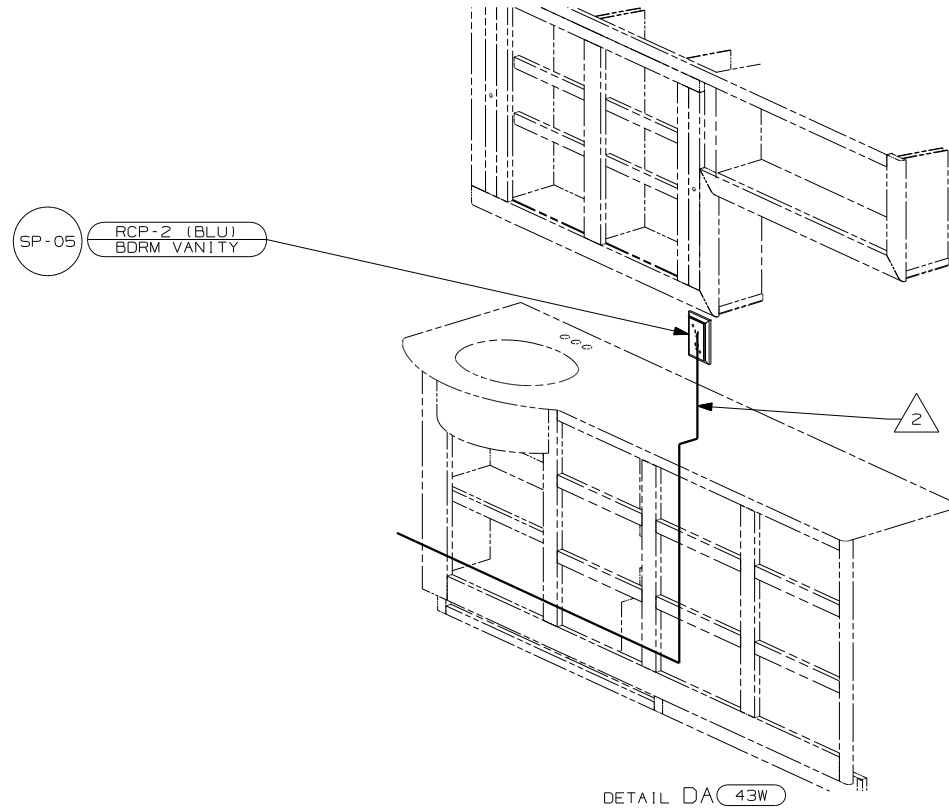
2. ALL 110V WIRES TO BE CLAMPED WITH CLAMP 10497-05-000 WITHIN 200mm OF OUTLET BOXES, USE SCREW G67-10-12B.
1. ALL WIRES TO BE SECURED WITH CLAMP 10495 OR 10497 OR WIRE TIE 8343 OR 108046 EVERY 600MM, USE SCREW G67-XX-XXX OR G56-XX-XXX AS APPROPRIATE FOR INSTALLATION.

NOTES:

FOR ELECTRICAL CALLOUTS SEE DWG NO. 121339-01-000

- 10A TV (REAR) -20"COLOR, STEREO
 21N DISHWASHER/BUILT-IN
 265 CODES/STANDARDS-CSA/CMVSS
 1B1 CODES/STANDARDS USA

FIRST USED	05 S40KD
TITLE	DO NOT SCALE DRAWING
WIRING INSTL-BODY 110V	
SHEET 3	PART NO 150111
	10/4/2004



2 ROUTE WIRE IN SIDEWALL DURING INSTALLATION.

- ALL WIRES TO BE SECURED WITH CLAMP 10495 OR 10497 OR WIRE TIE 8343 OR 108046 EVERY 600MM, USE SCREW G67-XX-XXX OR G56-XX-XXX AS APPROPRIATE FOR INSTALLATION.

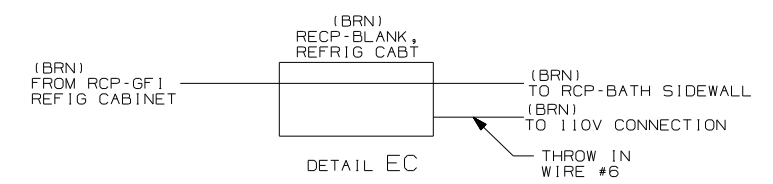
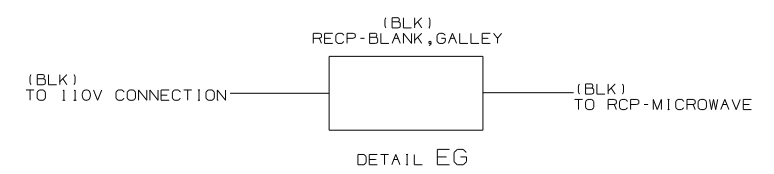
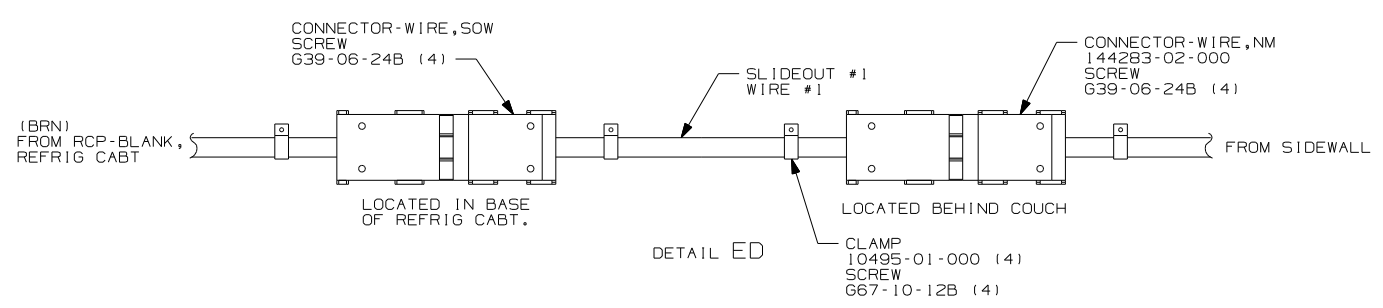
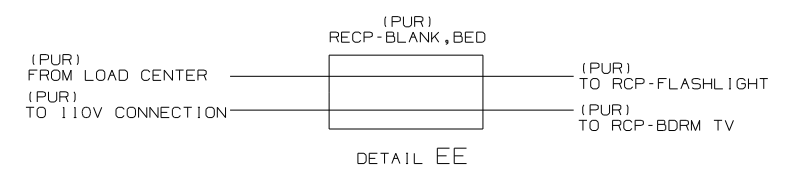
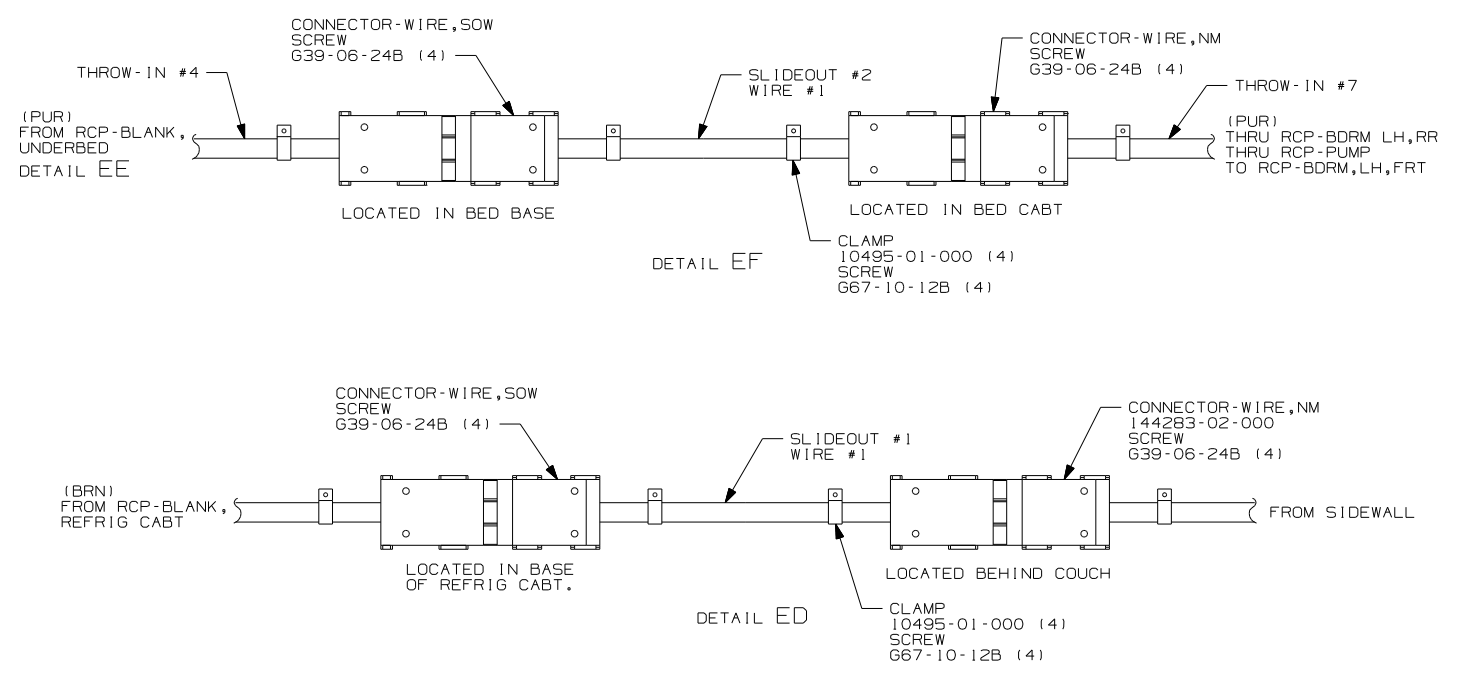
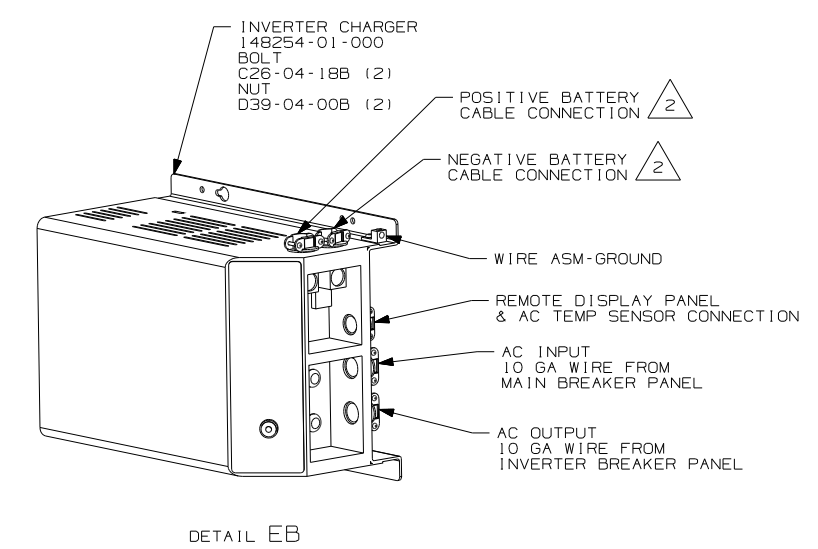
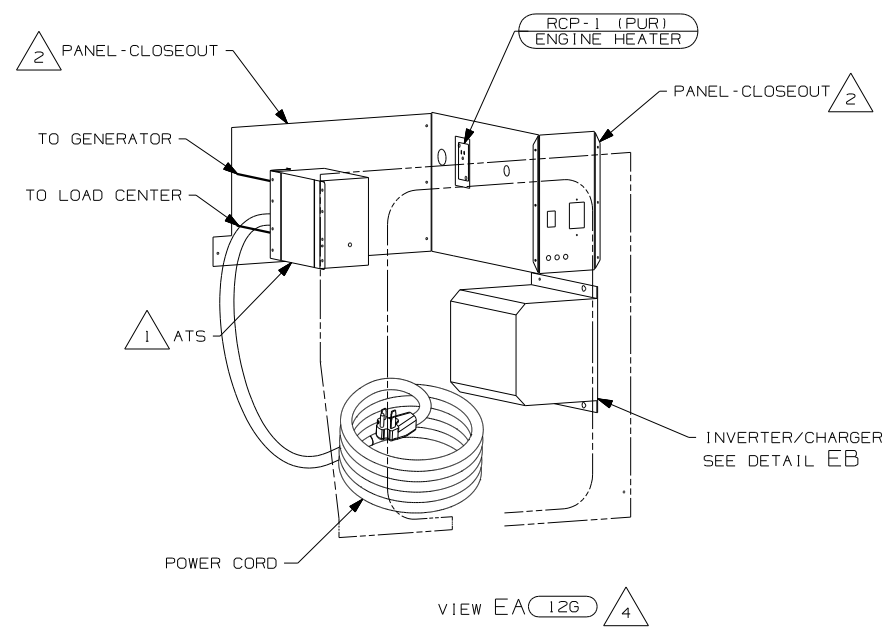
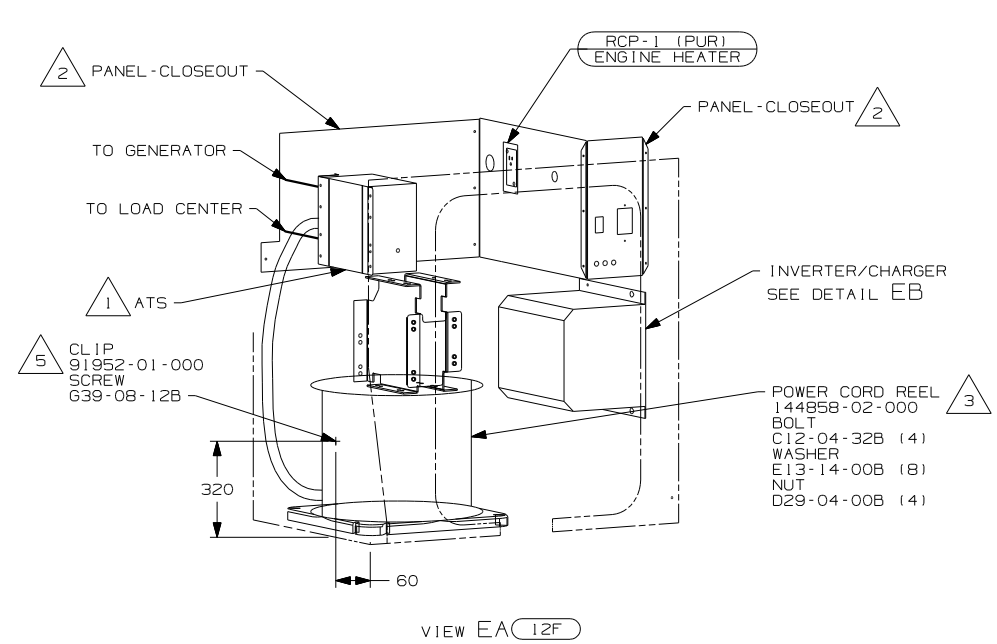
NOTES:

43W CABINET-LAVATORY
43V CABINET-CHEST OF DRAWERS
265 CODES/STANDARDS-CSA/CMVSS
1B1 CODES/STANDARDS USA

1B1 265

FIRST USED
05 S40KD
DO NOT SCALE DRAWING
TITLE: WIRING INSTL-BODY 110V
SHEET 4
PART NO 150111

FOR ELECTRICAL CALLOUTS SEE DWG NO. 121339-01-000



- NOTES:
- 5 FASTEN CLIP TO INSIDE LEFT COMPARTMENT WALL.
 - 4 PLUG POWER CORD REEL MOUNTING HOLES WITH PLUG-PLASTIC 81211-01-000 (4)
 - 3 INSERT BOLT FROM BOTTOM OF COMPARTMENT.
 - 2 SEE WIRING INSTL-CHASSIS FOR ADDITIONAL INFORMATION.
 - 1 SEE LOAD CENTER/ATS ASM FOR ADDITIONAL INFORMATION.

- 12G POWER CORD REEL -WITHOUT
- 12F POWER CORD REEL
- 265 CODES/STANDARDS - CSA/CMVSS
- 1B1 CODES/STANDARDS - USA

FIRST USED	
05 S40KD	
DO NOT SCALE DRAWING	
TITLE:	
WIRING INSTL-BODY 110V	
SHEET 5	PART NO 150111