



**DANGER**

**Danger of electrical shock, burns or death.** Always remove all power sources before attempting any repair, service or diagnostic work. Power can be present from shore power, generator, inverter or battery. All power sources must be disabled and secured before performing any service.

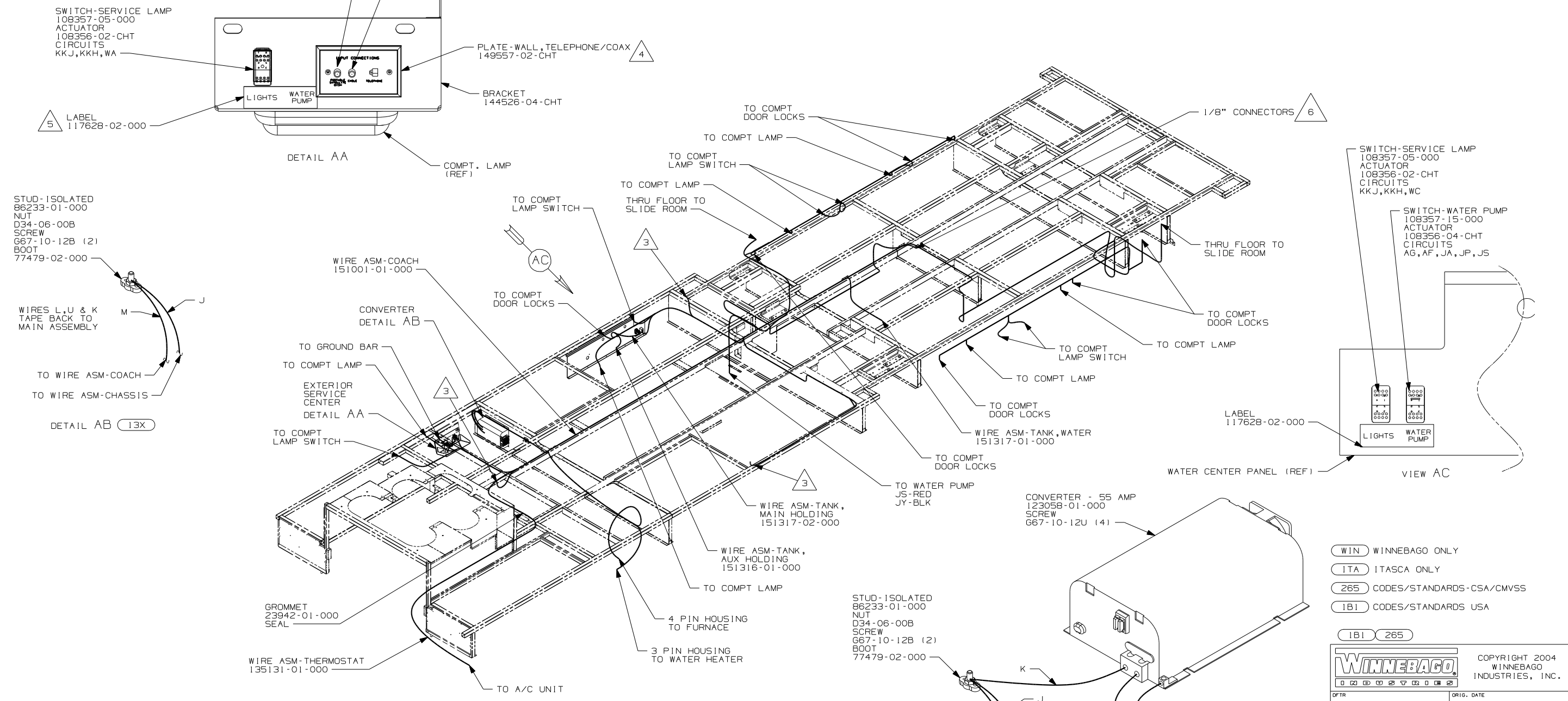


**CAUTION**

If you lack the skills, tools or equipment to perform diagnostic or repair work leave such work to an authorized Winnebago Industries dealer or other qualified shop.

DRAWING NO.	FEATURE
150997-01	(WIN)
150997-02	(ITA)

RELEASE	REV DATE	DWG NO
A		150997
REV ZONE	REVISION RECORD	DATE DFR-ORIG



- NOTES:
- 4. CONNECT TELEPHONE WIRES TO MATCHING COLORS ON PLATE-TELEPHONE.
  - 3. WIRE PASSES THROUGH FLOOR AT THIS POINT.
  - 2. CLAMP TO FLOOR SUPPORT TUBES AS NECESSARY WITH CLAMP 10497-01-000.
  - 1. ALL WIRES TO BE SECURED WITH CLAMP 10495 OR 10497 OR WIRE TIE 8343 OR 108046 EVERY 600MM, USE SCREW G67-XX-XXX OR G56-XX-XXX AS APPROPRIATE FOR INSTALLATION.

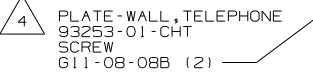
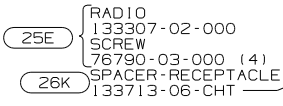
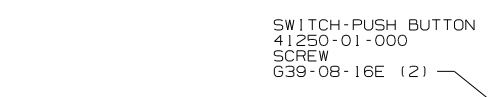
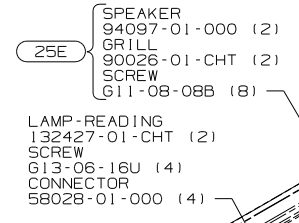
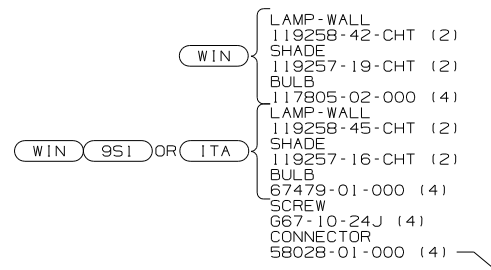
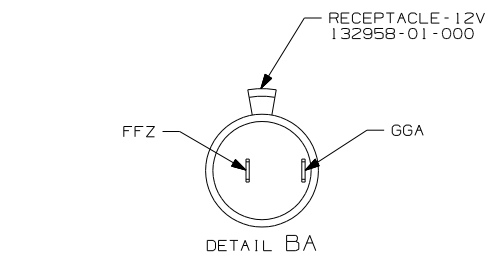
- 6. CONNECT 1/8" CONNECTORS TOGETHER & TIE BACK TO WIRE ASM-COACH. SECURE WITH TAPE 8363-01-000.
- 5. CUT LABEL IN HALF AND SAVE WATER PUMP PORTION FOR LATER USE.

FOR ELECTRICAL TORQUE SPECIFICATIONS SEE DWG NO. 128783-01-000

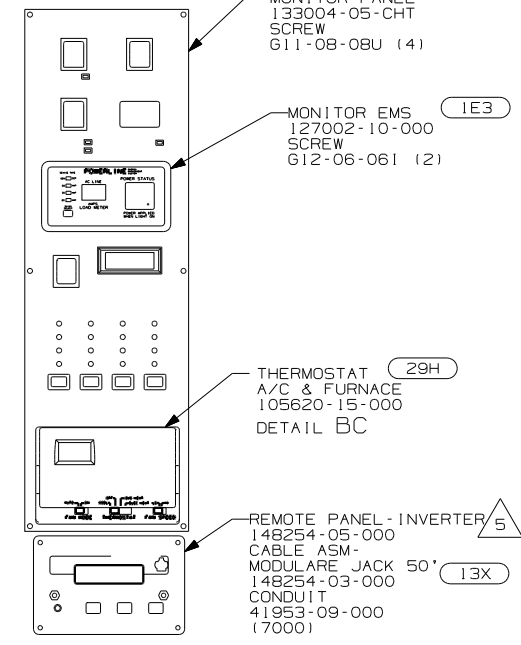
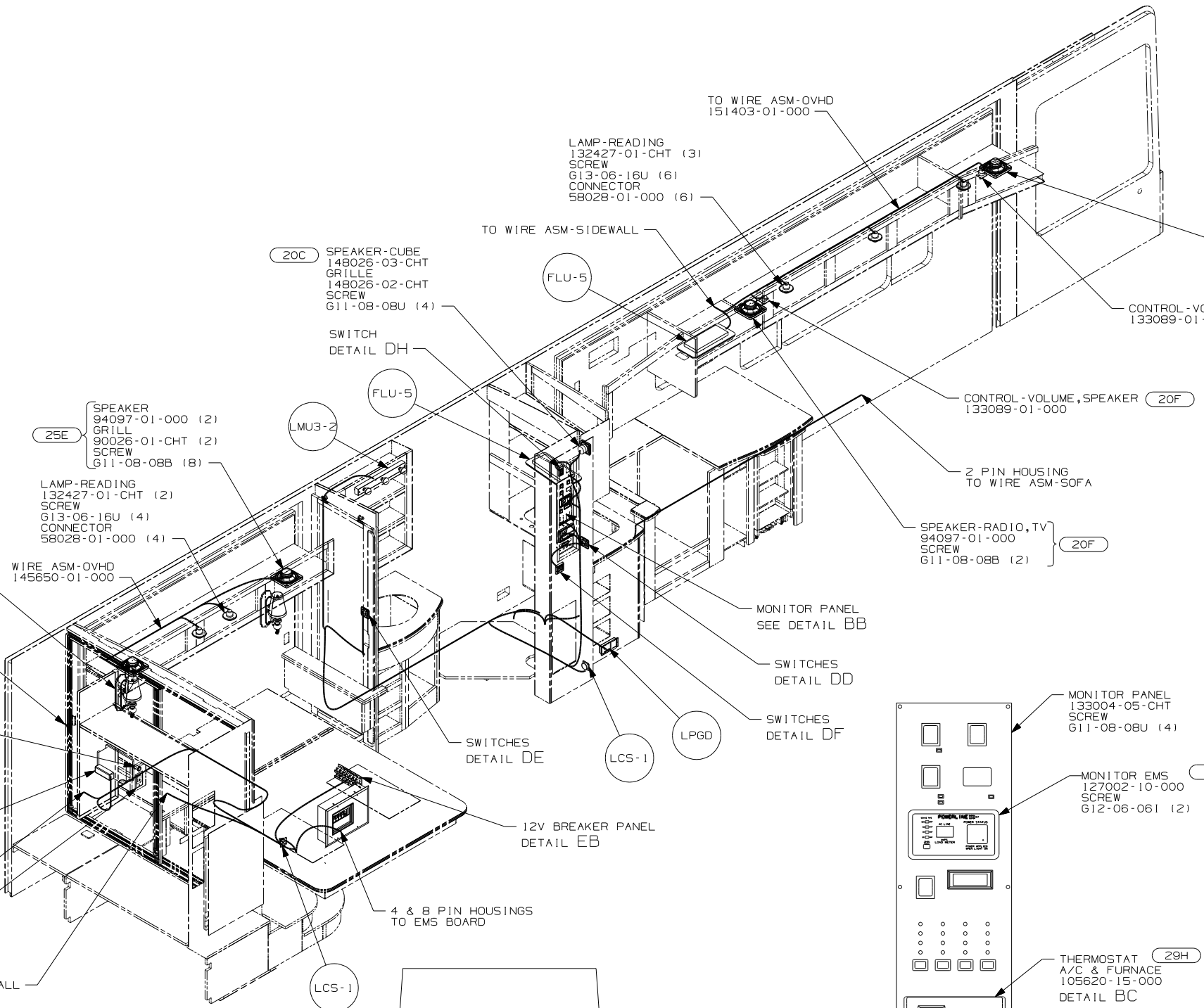
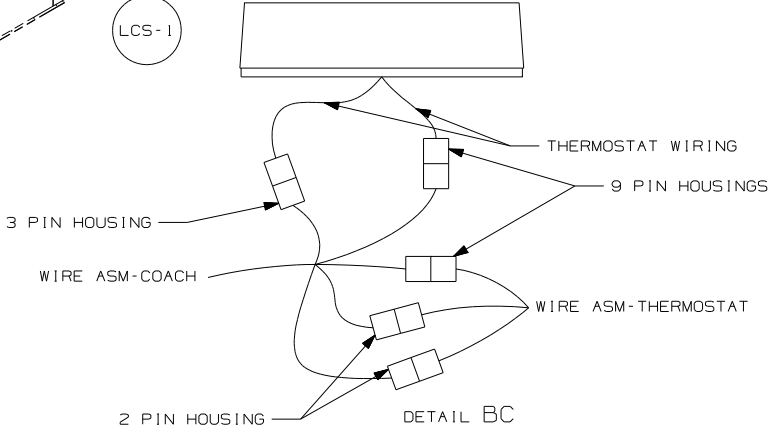
(X-X) FOR ELECTRICAL CALLOUTS SEE DWG NO. 121339-01-000

- (WIN) WINNEBAGO ONLY
- (ITA) ITASCA ONLY
- (265) CODES/STANDARDS-CSA/CMVSS
- (1B1) CODES/STANDARDS USA
- (1B1) (265)

<b>WINNEBAGO</b>		COPYRIGHT 2004 WINNEBAGO INDUSTRIES, INC.	
DFTR	ORIG. DATE	ALL DIMENSIONS ARE IN MILLIMETERS	
CHKR		FIRST USED	
P.E.		05 P39F	
M.E.		UNSPECIFIED TOLERANCES ARE:	
DSNR		MATERIAL:	
		WHOLE DIM (X)	:
		ONE-PLACE (X.X)	:
		TWO-PLACE (X.XX)	:
		ANGLE	:
		THIRD ANGLE PROJECTION	
DO NOT SCALE DRAWING			
TITLE: WIRING INSTL-BODY, 12V			
SHEET 1 OF 7	PART NO	150997	



- NOTES:
- ALL WIRES TO BE SECURED WITH CLAMP 10495 OR 10497 OR WIRE TIE 8343 OR 108046 EVERY 600MM, USE SCREW G67-XX-XXX OR G56-XX-XXX AS APPROPRIATE FOR INSTALLATION.
  - SEE WIRING DIAGRAM-BODY,12V FOR ADDITIONAL INFORMATION.
5. CONNECT CIRCUIT WB FROM COACH WIRING TO RED WIRE ON REMOTE PANEL.
4. CONNECT TELEPHONE WIRES TO MATCHING COLORS ON PLATE-TELEPHONE.
3. WIRE PASSES THROUGH FLOOR AT THIS POINT.



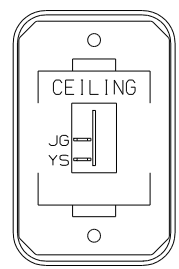
FOR ELECTRICAL TORQUE SPECIFICATIONS SEE DWG NO. 128783-01-000

FOR ELECTRICAL CALLOUTS SEE DWG NO. 121339-01-000

- 29H A/C CENTRAL HEAT PUMP
- 25E ADDED GOLD COAX DROPS
- 20F DELUXE SOUND SYSTEM-WITHOUT
- 20C SOUND SYS. DLX. W/O-SURROUND
- 13X INVERTER/CHARGER 2.0 KW
- 13B INVERTER/CHARGER-DC/AC W/O
- 951 WORKHORSE29,500 330 8.3L 6SP
- 1E3 ENERGY MANAGEMENT SYSTEM
- WIN WINNEBAGO ONLY
- ITA ITASCA ONLY
- 265 CODES/STANDARDS-CSA/CMVSS
- 1B1 CODES/STANDARDS USA

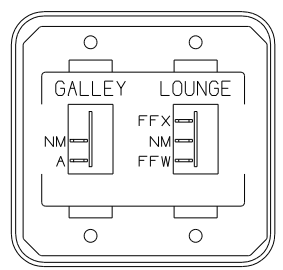
FIRST USED	
05 P39F	
DO NOT SCALE DRAWING	
TITLE: WIRING INSTL-BODY,12V	
SHEET 2	PART NO 150997





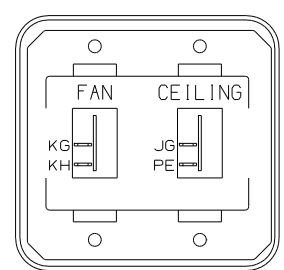
SWITCH-ROCKER  
135740-01-CHT  
SWITCH-BASE  
135741-01-CHT  
SWITCH-BEZEL  
135742-07-CHT  
SCREW  
G11-08-08U (2)

DETAIL DA



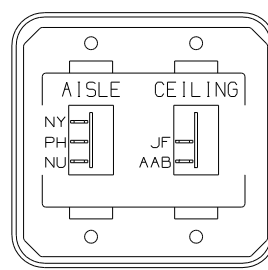
SWITCH-ROCKER  
135740-01-CHT  
135740-02-CHT  
SWITCH-BASE  
135741-02-CHT  
SWITCH-BEZEL  
135742-18-CHT  
SCREW  
G11-08-08U (4)

DETAIL DD



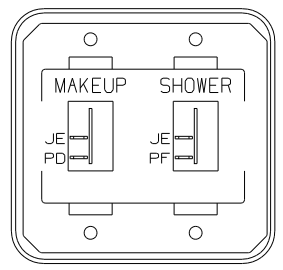
SWITCH-ROCKER  
135740-01-CHT (2)  
SWITCH-BASE  
135741-02-CHT  
SWITCH-BEZEL  
135742-33-CHT  
SCREW  
G11-08-08U (4)

DETAIL DG



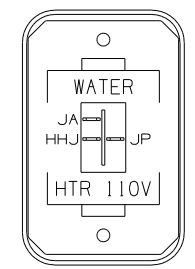
SWITCH-ROCKER  
135740-01-CHT  
135740-02-CHT  
SWITCH-BASE  
135741-02-CHT  
SWITCH-BEZEL  
135742-13-CHT  
SCREW  
G11-08-08U (4)

DETAIL DB



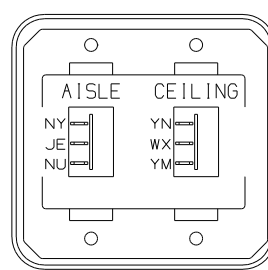
SWITCH-ROCKER  
135740-01-CHT (2)  
SWITCH-BASE  
135741-02-CHT  
SWITCH-BEZEL  
135742-20-CHT  
SCREW  
G11-08-08U (4)

DETAIL DE



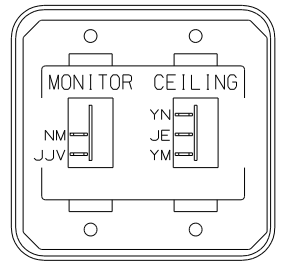
SWITCH-ROCKER  
135740-06-CHT  
SWITCH-BASE  
135741-01-CHT  
SWITCH-BEZEL  
135742-35-CHT  
SCREW  
G11-08-08U (2)

DETAIL DH



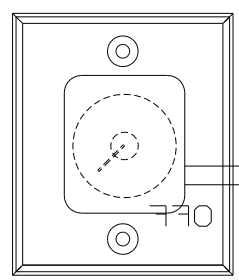
SWITCH-ROCKER  
135740-02-CHT (2)  
SWITCH-BASE  
135741-02-CHT  
SWITCH-BEZEL  
135742-13-CHT  
SCREW  
G11-08-08U (4)

DETAIL DC



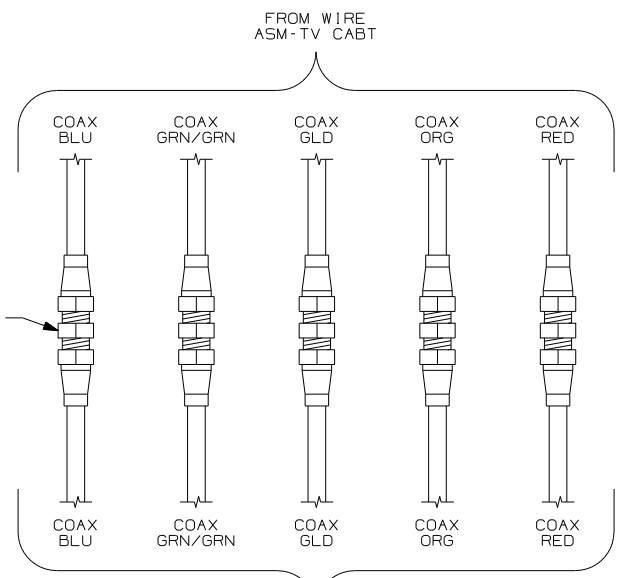
SWITCH-ROCKER  
135740-01-CHT  
135740-02-CHT  
SWITCH-BASE  
135741-02-CHT  
SWITCH-BEZEL  
135742-31-CHT  
SCREW  
G11-08-08U (4)

DETAIL DF



SWITCH  
137889-01-000  
SCREW  
G11-06-10U (2)

DETAIL DJ



ADAPTER  
82134-01-000 (5)

DETAIL DL

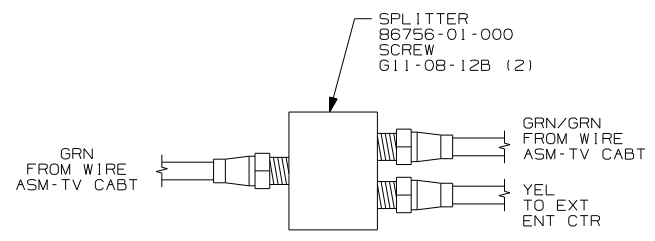


PLATE-SWITCH  
144363-09-CHT  
SWITCH  
108357-06-000  
ACTUATOR  
108356-02-CHT  
NUT  
D65-08-00B (2)  
LABEL  
116220-01-000

LABEL-WARNING  
116549-02-000

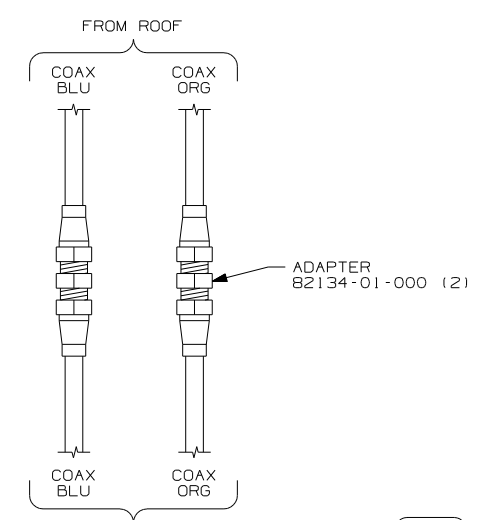
**WARNING**  
UNDERSTAND OPERATOR'S MANUAL  
BEFORE USING KEEP PEOPLE AND  
OBSTRUCTIONS CLEAR OF SLIDEOUT  
ROOM WHEN OPERATING TO AVOID  
INJURY AND/OR PROPERTY DAMAGE

DETAIL DN



SPLITTER  
86756-01-000  
SCREW  
G11-08-12B (2)

DETAIL DK (1D5)



ADAPTER  
82134-01-000 (2)

DETAIL DM

- (1D5) ENTERTAINMENT CENTR/EXT W/CD
- (265) CODES/STANDARDS-CSA/CMVSS
- (1B1) CODES/STANDARDS USA

(1B1) (265)

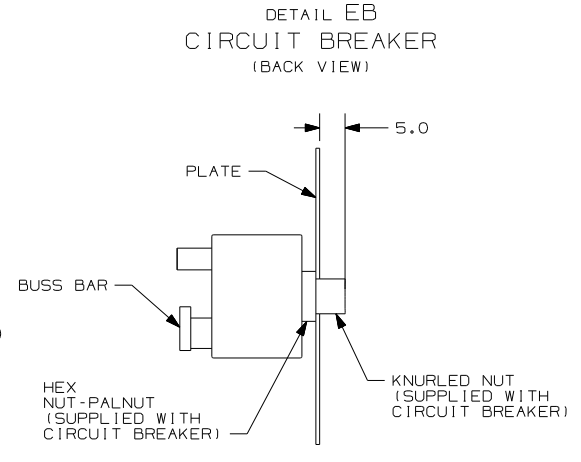
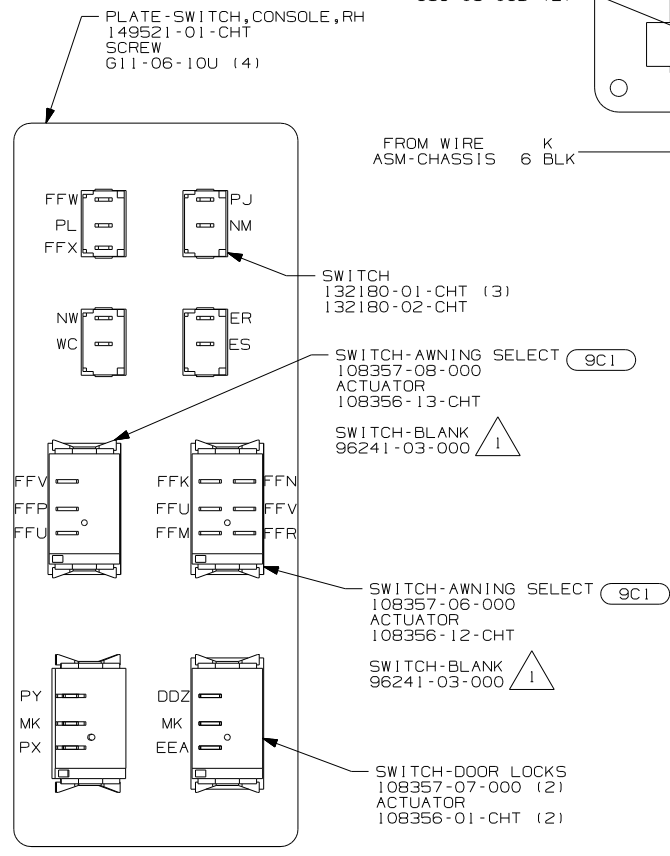
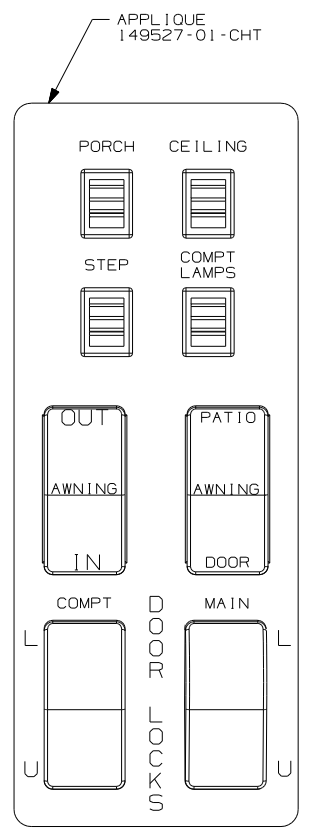
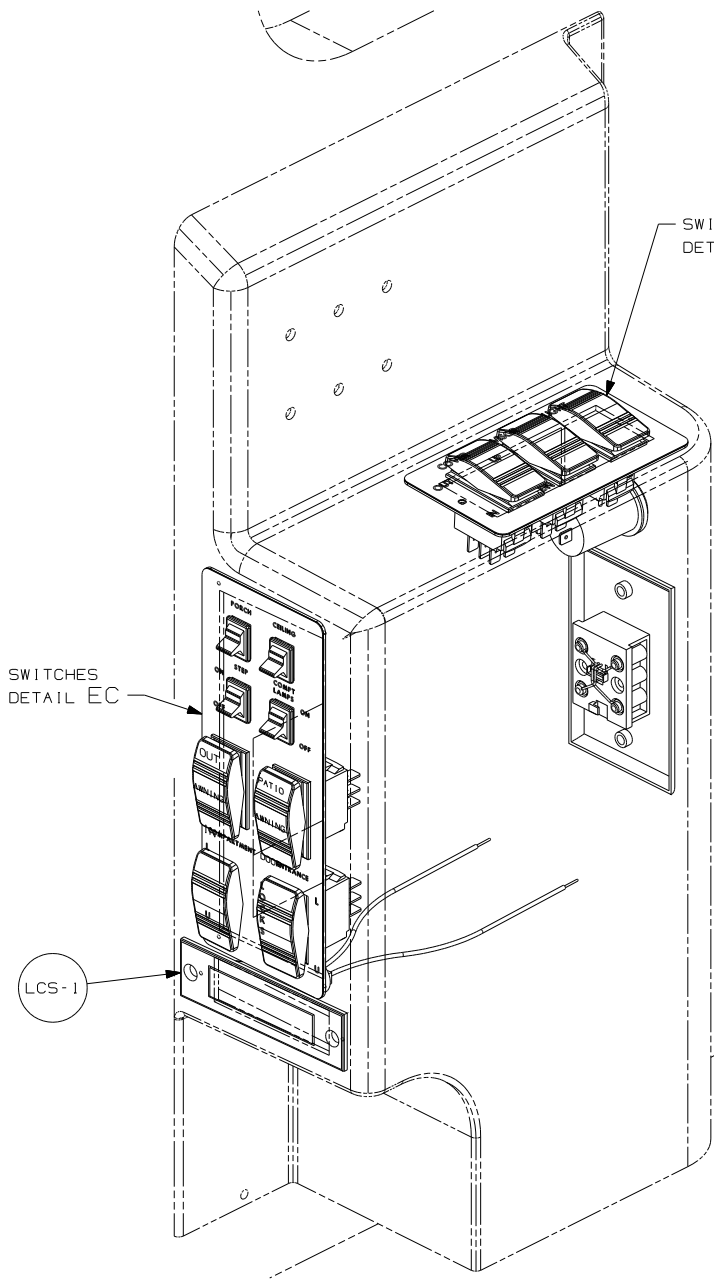
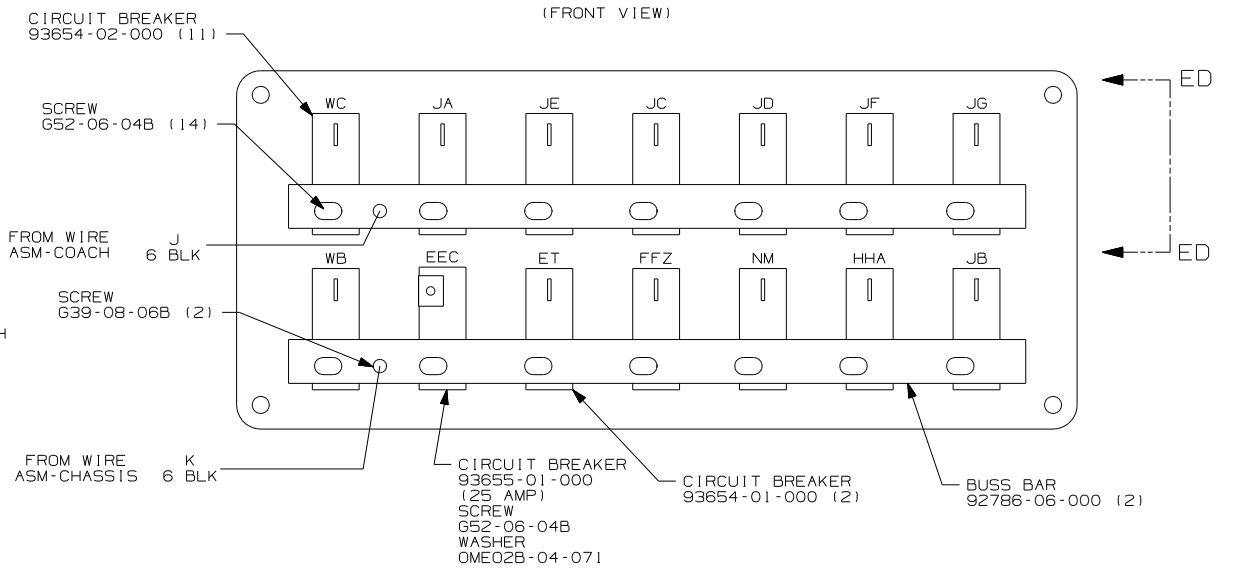
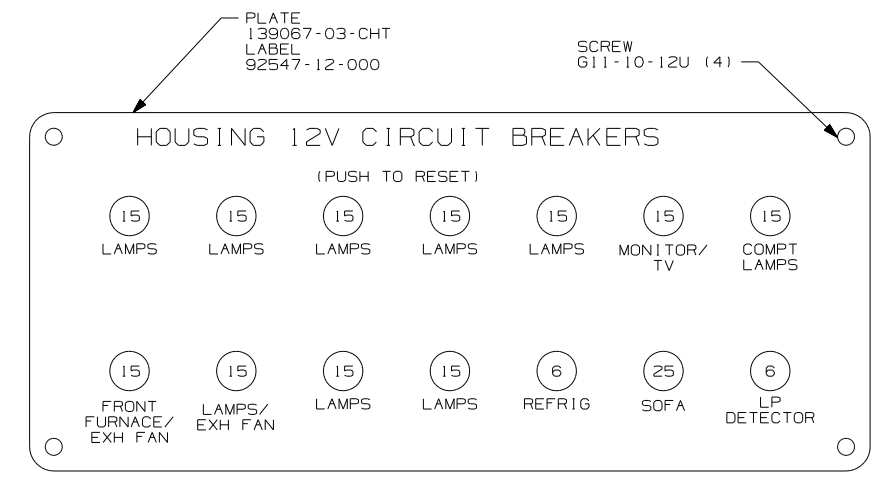
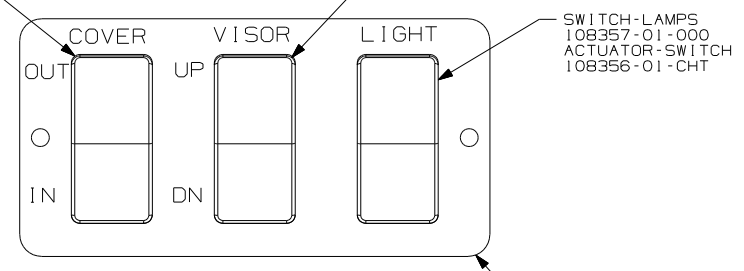
FIRST USED	05 P39F
TITLE	DO NOT SCALE DRAWING
TITLE	WIRING INSTL-BODY, 12V
SHEET 4	PART NO 150997

FOR ELECTRICAL  
TORQUE  
SPECIFICATIONS  
SEE DWG NO.  
128783-01-000



FOR ELECTRICAL  
CALLOUTS  
SEE DWG NO.  
121339-01-000

- SWITCH-COVER 108357-06-000
- ACTUATOR-SWITCH 108356-01-CHT
- CIRCUITS GX,KA,HHC,HHD
- 28K SWITCH-BLANK 96241-03-000
- 28J SWITCH-VISOR 108357-06-000
- ACTUATOR-SWITCH 108356-01-CHT
- CIRCUITS HHM,HHN,MK,MU



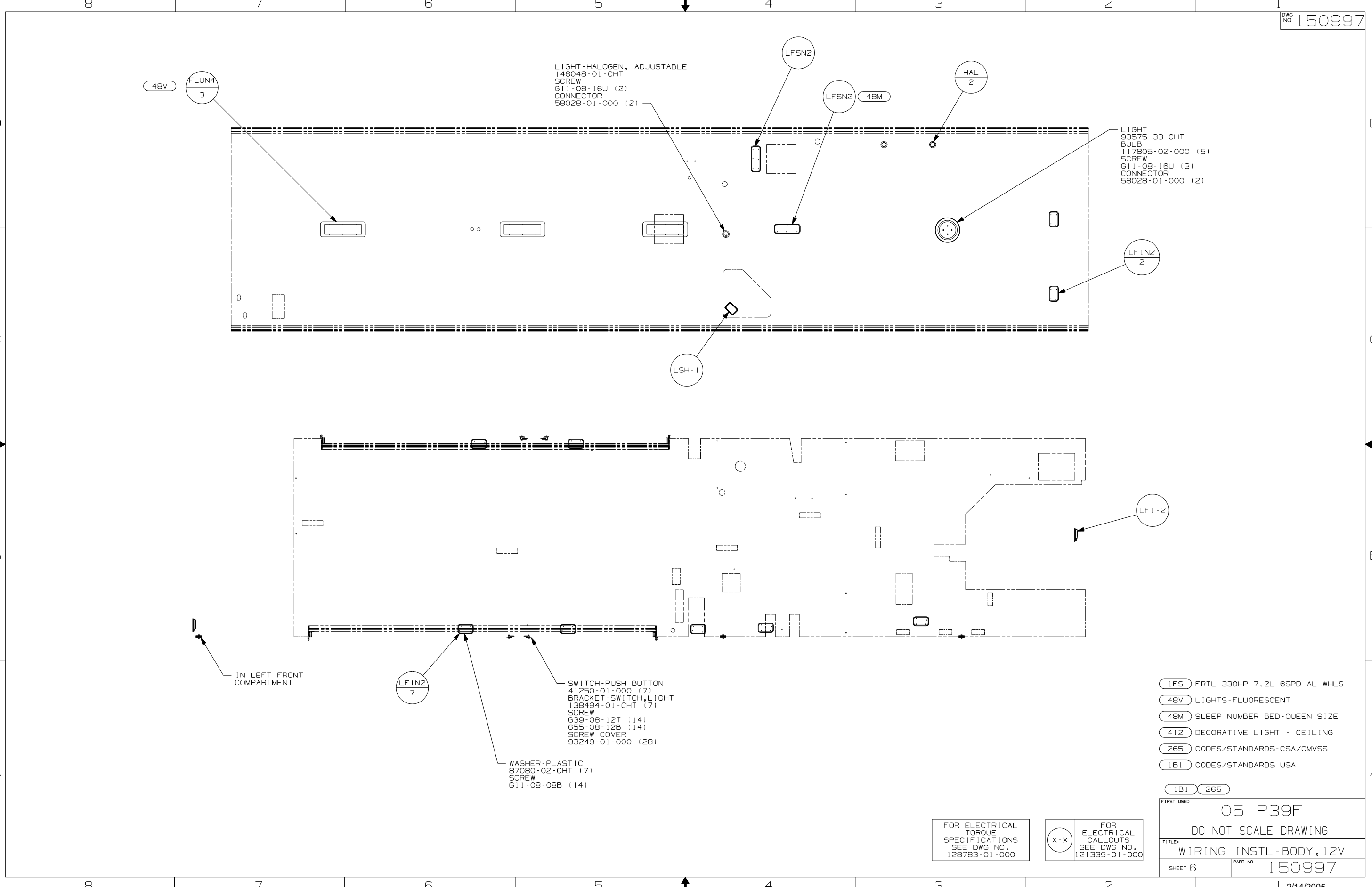
- 40G POWER DOOR LOCK WITH REMOTE
- 9C1 AWNING-ELECTRIC PACKAGE
- 28K SUNVISORS - MANUAL (2)
- 28J SUNVISORS - POWERED (2)
- 265 CODES/STANDARDS-CSA/CMVSS
- 1B1 CODES/STANDARDS USA

NOTES:  
 1 WITHOUT 9C1

FOR ELECTRICAL TORQUE SPECIFICATIONS SEE DWG NO. 128783-01-000

(X-X) FOR ELECTRICAL CALLOUTS SEE DWG NO. 121339-01-000

FIRST USED	05 P39F
TITLE	DO NOT SCALE DRAWING
	WIRING INSTL-BODY, 12V
SHEET 5	PART NO 150997



LIGHT-HALOGEN, ADJUSTABLE  
146048-01-CHT  
SCREW  
611-08-16U (2)  
CONNECTOR  
58028-01-000 (2)

LIGHT  
93575-33-CHT  
BULB  
117805-02-000 (5)  
SCREW  
611-08-16U (3)  
CONNECTOR  
58028-01-000 (2)

SWITCH-PUSH BUTTON  
41250-01-000 (7)  
BRACKET-SWITCH,LIGHT  
138494-01-CHT (7)  
SCREW  
G39-08-12T (14)  
G55-08-12B (14)  
SCREW COVER  
93249-01-000 (28)

WASHER-PLASTIC  
87080-02-CHT (7)  
SCREW  
611-08-08B (14)

- (IFS) FRTL 330HP 7.2L 6SPD AL WHLS
- (48V) LIGHTS-FLUORESCENT
- (48M) SLEEP NUMBER BED-QUEEN SIZE
- (412) DECORATIVE LIGHT - CEILING
- (265) CODES/STANDARDS-CSA/CMVSS
- (1B1) CODES/STANDARDS USA

FIRST USED	05 P39F
TITLE	DO NOT SCALE DRAWING
SHEET 6	WIRING INSTL - BODY, 12V
PART NO	150997
1 2/14/2005	

FOR ELECTRICAL  
TORQUE  
SPECIFICATIONS  
SEE DWG NO.  
128783-01-000

FOR  
ELECTRICAL  
CALLOUTS  
SEE DWG NO.  
121339-01-000

IN LEFT FRONT  
COMPARTMENT

