



**DANGER**

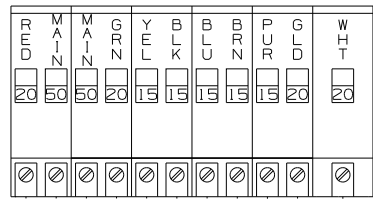
**Danger of electrical shock, burns or death.** Always remove all power sources before attempting any repair, service or diagnostic work. Power can be present from shore power, generator, inverter or battery. All power sources must be disabled and secured before performing any service.



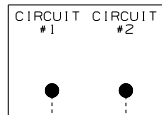
**CAUTION**

If you lack the skills, tools or equipment to perform diagnostic or repair work leave such work to an authorized Winnebago Industries dealer or other qualified shop.

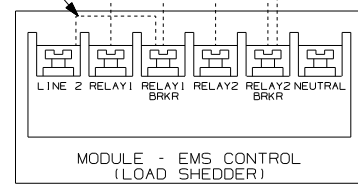
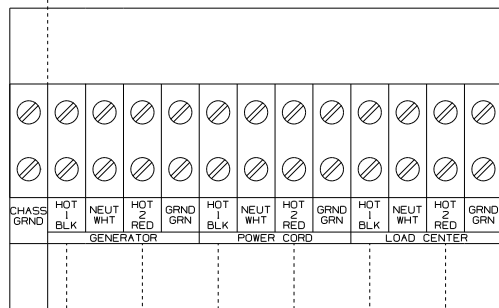
LOAD CENTER



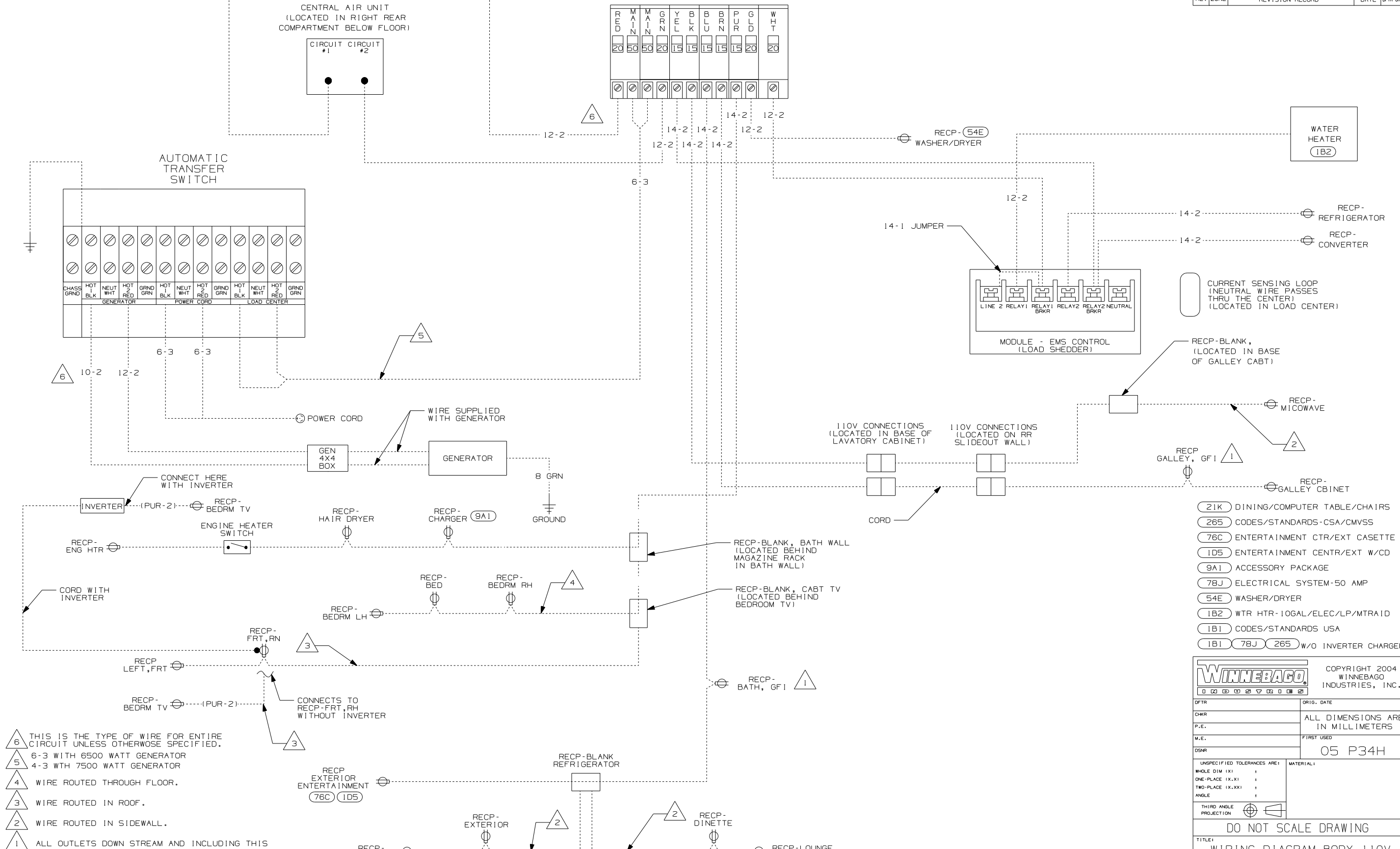
CENTRAL AIR UNIT  
 (LOCATED IN RIGHT REAR  
 COMPARTMENT BELOW FLOOR)



AUTOMATIC  
 TRANSFER  
 SWITCH



CURRENT SENSING LOOP  
 (NEUTRAL WIRE PASSES  
 THRU THE CENTER)  
 (LOCATED IN LOAD CENTER)



- NOTES:
- 6 THIS IS THE TYPE OF WIRE FOR ENTIRE CIRCUIT UNLESS OTHERWISE SPECIFIED.
  - 5 6-3 WITH 6500 WATT GENERATOR
  - 4 4-3 WITH 7500 WATT GENERATOR
  - 4 WIRE ROUTED THROUGH FLOOR.
  - 3 WIRE ROUTED IN ROOF.
  - 2 WIRE ROUTED IN SIDEWALL.
  - 1 ALL OUTLETS DOWN STREAM AND INCLUDING THIS OUTLET ARE GROUND FAULT INTERRUPT PROTECTED

- 21K DINING/COMPUTER TABLE/CHAIRS
- 265 CODES/STANDARDS-CSA/CMVSS
- 76C ENTERTAINMENT CTR/EXT CASSETTE
- ID5 ENTERTAINMENT CENTR/EXT W/CD
- 9A1 ACCESSORY PACKAGE
- 78J ELECTRICAL SYSTEM-50 AMP
- 54E WASHER/DRYER
- 1B2 WTR HTR-10GAL/ELEC/LP/MTR/ID
- 1B1 CODES/STANDARDS USA
- 1B1 78J 265 W/O INVERTER CHARGER

**WINNEBAGO** COPYRIGHT 2004 WINNEBAGO INDUSTRIES, INC.

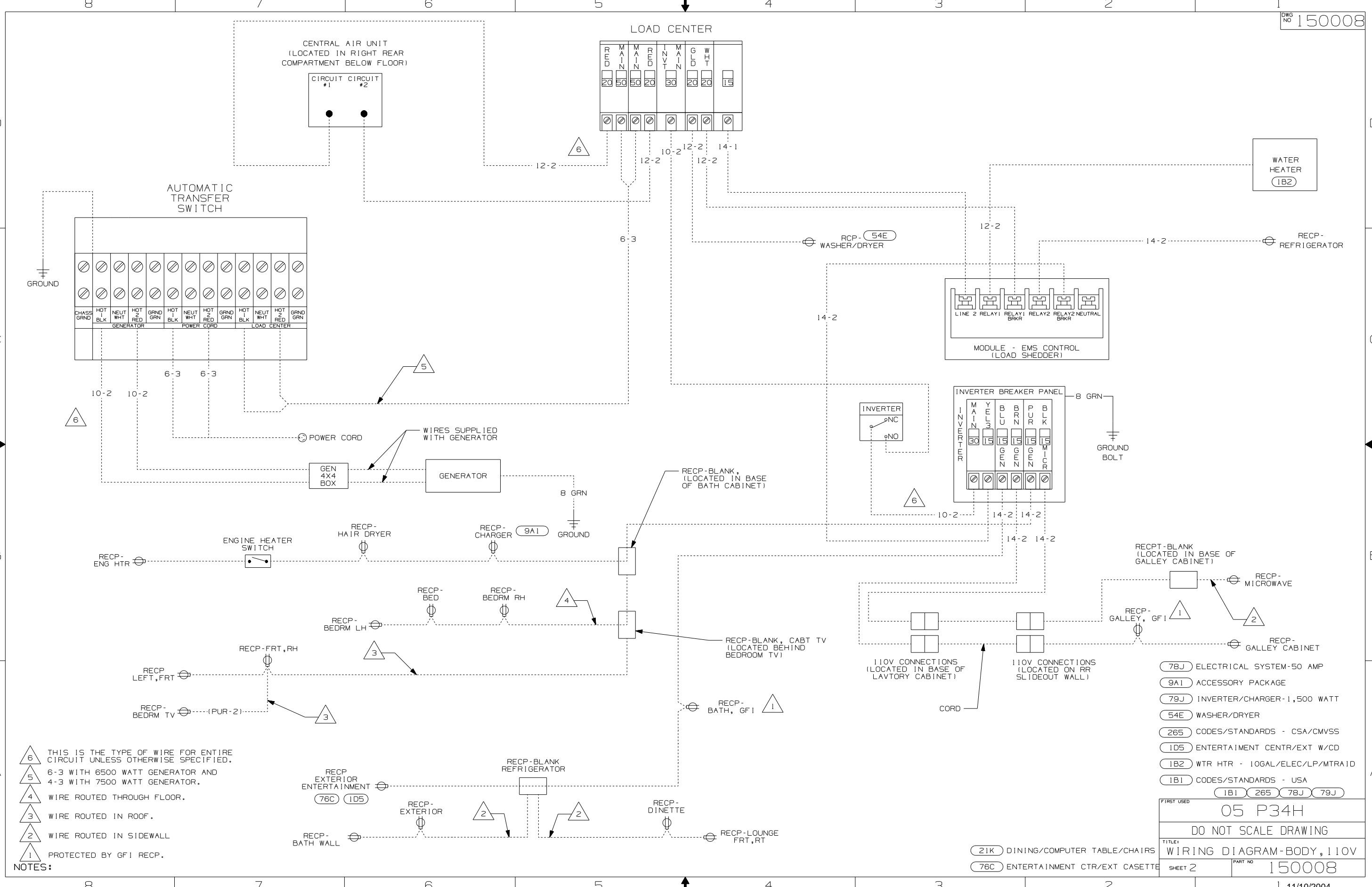
DFTR	ORIG. DATE
CHKR	ALL DIMENSIONS ARE IN MILLIMETERS
P.E.	FIRST USED
M.E.	05 P34H
DSNR	
UNSPECIFIED TOLERANCES ARE:	
WHOLE DIM (X)	MATERIAL:
ONE-PLACE (X.X)	:
TWO-PLACE (X.XX)	:
ANGLE	:
THIRD ANGLE PROJECTION	

DO NOT SCALE DRAWING

TITLE: WIRING DIAGRAM-BODY, 110V

SHEET 1 OF 2 PART NO 150008

REF: 144817-C | 11/10/2004



- NOTES:**
- △6 THIS IS THE TYPE OF WIRE FOR ENTIRE CIRCUIT UNLESS OTHERWISE SPECIFIED.
  - △5 6-3 WITH 6500 WATT GENERATOR AND 4-3 WITH 7500 WATT GENERATOR.
  - △4 WIRE ROUTED THROUGH FLOOR.
  - △3 WIRE ROUTED IN ROOF.
  - △2 WIRE ROUTED IN SIDEWALL
  - △1 PROTECTED BY GFI RECP.

- (78J) ELECTRICAL SYSTEM-50 AMP
- (9A1) ACCESSORY PACKAGE
- (79J) INVERTER/CHARGER-1,500 WATT
- (54E) WASHER/DRYER
- (265) CODES/STANDARDS - CSA/CMVSS
- (1D5) ENTERTAINMENT CTR/EXT W/CD
- (1B2) WTR HTR - 10GAL/ELEC/LP/MTR/1D
- (1B1) CODES/STANDARDS - USA
- (1B1) (265) (78J) (79J)

FIRST USED	05 P34H	
TITLE	DO NOT SCALE DRAWING	
TITLE	WIRING DIAGRAM-BODY, 110V	
SHEET 2	PART NO	150008

- (21K) DINING/COMPUTER TABLE/CHAIRS
- (76C) ENTERTAINMENT CTR/EXT CASSETTE