



**DANGER**

**Danger of electrical shock, burns or death.** Always remove all power sources before attempting any repair, service or diagnostic work. Power can be present from shore power, generator, inverter or battery. All power sources must be disabled and secured before performing any service.



**CAUTION**

If you lack the skills, tools or equipment to perform diagnostic or repair work leave such work to an authorized Winnebago Industries dealer or other qualified shop.

8		7		6		5		4		3		2		1	
		P32T	P34H	P36G	P39K	P39F									
RED	12-UL	136135-07-053	136135-07-053	136135-07-053	136135-07-053	136135-07-053									
	12-CA	136136-07-053	136136-07-053	136136-07-053	136136-07-053	136136-07-053									
MAIN	6-3 UL	136139-01-027	136139-01-033	136139-01-030	136139-01-027	136139-01-027		39C							
	6-3 CA	136140-01-027	136140-01-033	136140-01-030	136140-01-027	136140-01-027		39C							
	4-3 UL	136141-01-027	136141-01-033	136141-01-030	136141-01-027	136141-01-027		670							
	4-3 CA	136142-01-027	136142-01-033	136142-01-030	136142-01-027	136142-01-027		670							
GRN	12-UL	136135-08-053	136135-08-053	136135-08-053	136135-08-053	136135-08-053									
	12-CA	136136-08-053	136136-08-053	136136-08-053	136136-08-053	136136-08-053									
INVERTER CHARGER MAIN	10-UL	136137-01-035	136137-01-035	136137-01-035	136137-01-035	136137-01-035		13X							
	10-CA	136138-01-035	136138-01-035	136138-01-035	136138-01-035	136138-01-035		13X							
YEL	14-UL	136131-05-086	136131-05-075	136131-05-072	136131-05-065	136131-05-027		13B							
	14-CA	136134-05-086	136134-05-075	136134-05-072	136134-05-065	136134-05-027		13B							
YEL-2	14-UL	136131-05-070	136131-05-075	136131-05-072	136131-05-065	136131-05-078		144 15U 79W							
	14-CA	136134-05-070	136134-05-075	136134-05-072	136134-05-065	136134-05-078		144 15U 79W							
YEL-3	14-UL	136131-17-020	136131-17-020	136131-17-020	136131-17-020	136131-17-020		13X							
	14-CA	136134-17-020	136134-17-020	136134-17-020	136134-17-020	136134-17-020		13X							
GLD	12-UL	X	136135-10-096	136135-10-055	136135-10-130	136135-10-135		21M 54E							
	12-CA	X	136136-10-096	136136-10-055	136136-10-130	136136-10-135		21M 54E							
WHT	12 UL	136135-09-033	136135-09-033	136135-09-033	136135-09-033	136135-09-045		1B2							
	12 CA	136136-09-033	136136-09-033	136136-09-033	136136-09-033	136136-09-045		1B2							
INVERTER CHARGER SUB	10-UL	136137-01-035	136137-01-035	136137-01-035	136137-01-035	136137-01-035		13X							
	10-CA	136138-01-035	136138-01-035	136138-01-035	136138-01-035	136138-01-035		13X							
BLU	14-UL	136131-02-190	136131-02-122	136131-02-165	136131-02-171	136131-02-220		1							
	14-CA	136134-02-190	136134-02-122	136134-02-165	136134-02-171	136134-02-220		1							
BRN	14-UL	136131-03-130	136131-03-046	136131-03-105	136131-03-130	136131-03-180		1							
	14-CA	136134-03-130	136134-03-046	136134-03-105	136134-03-130	136134-03-180		1							
PUR	14-UL	136131-04-185	136131-04-151	136131-04-178	136131-04-200	136131-04-178									
	14-CA	136134-04-185	136134-04-151	136134-04-178	136134-04-200	136134-04-178									
BLK	14-UL	136131-06-093	136131-06-046	136131-06-075	136131-06-065	136131-06-078		1							
	14-CA	136134-06-093	136134-06-046	136134-06-075	136134-06-065	136134-06-078		1							

RELEASE REV DATE A 1 48959  
 REV ZONE REVISION RECORD DATE DFR-ORIG

- 79W REFRIGERATOR-4 DOOR
- 670 GEN-7.5KW-ONAN-QUIET DIESEL
- 13B INVERTER/CHARGER-DC/AC W/O
- 54E WASHER/DRYER
- 265 CODES/STANDARDS - CSA/CMVSS
- 21M WASHER/DRYER - PREP
- 1B1 CODES/STANDARDS - USA
- 39C GEN-6.5KW ONAN LP MARO GOLD
- 15U REFRIGERATOR/FRZR W/ICEMAKER
- 13X INVERTER/CHARGER 2.0 KW
- 144 REFRIGERATOR - DOUBLE DOOR
- 1B1 265

**WINNEBAGO** COPYRIGHT 2004 WINNEBAGO INDUSTRIES, INC.

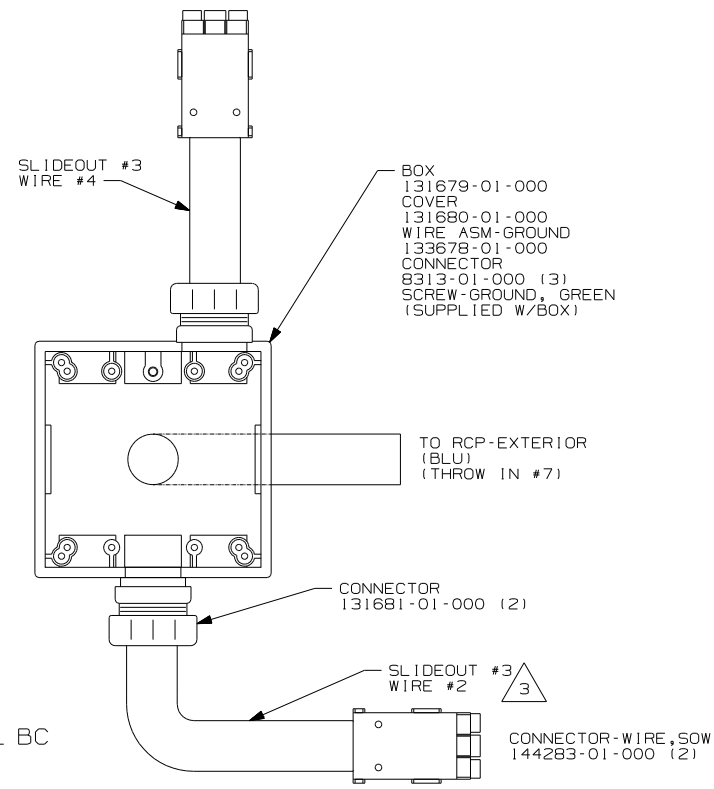
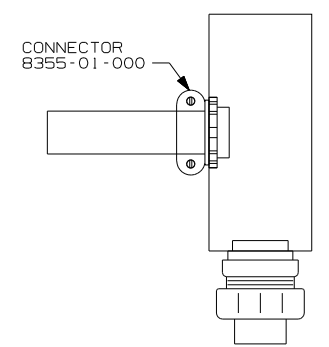
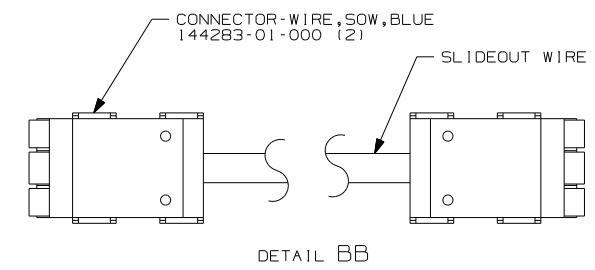
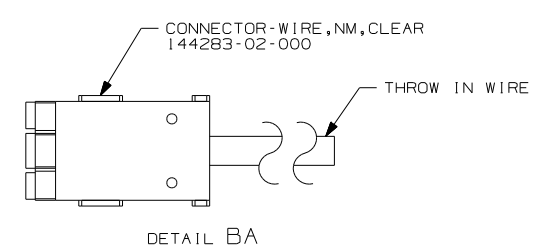
DFTR	ORIG. DATE
CHKR	ALL DIMENSIONS ARE IN MILLIMETERS
P.E.	FIRST USED
M.E.	05 P-SERIES
DSNR	
UNSPECIFIED TOLERANCES ARE:	MATERIAL:
WHOLE DIM (X)	: 1
ONE-PLACE (X.X)	: 1.5
TWO-PLACE (X.XX)	: 0.50
ANGLE	: 1°
THIRD ANGLE PROJECTION	
DO NOT SCALE DRAWING	
TITLE: LOAD CENTER/ATS ASM	
SHEET 1 OF 5	PART NO 148959

NOTES: SEE DETAIL BA FOR CONNECTOR INSTALLATION.

		8	7	6	5	4	3	2	1
			P32T	P34H	P36G	P39K	P39F		
GROUND MAIN			136145-01-023	136145-01-023	136145-01-023	136145-01-023	136145-01-023		
GROUND SUB			136145-01-023	136145-01-023	136145-01-023	136145-01-023	136145-01-023		
ATS GROUND			136145-01-008	136145-01-008	136145-01-008	136145-01-020	136145-01-020		
INVERTER GROUND			136145-01-010	136145-01-010	136145-01-010	136145-01-020	136145-01-020		
GENERATOR CABLE ASM	UL		136147-01-101	136147-01-105	X	X	X		
	CA		136147-02-101	136147-02-105	X	X	X		
GENERATOR CABLE ASM			X	-----	136148-01-119	136148-01-122	136148-01-122		
			136148-02-101	136148-02-105	136148-02-119	136148-02-122	136148-02-122		
CONDUIT ASM-CENTRAL A/C			151704-01-029	151704-01-029	151704-01-029	151704-01-029	151704-01-029		
THROW IN WIRE #1	14-UL		136131-03-070 <sup>1</sup>	136131-04-180	136131-03-085 <sup>1</sup>	136131-04-050 <sup>1</sup>	136131-12-122 <sup>1</sup>		
	14-CA		136134-03-070 <sup>1</sup>	136134-04-180	136134-03-085 <sup>1</sup>	136134-04-050 <sup>1</sup>	136134-12-122 <sup>1</sup>		
THROW IN WIRE #2	14-UL		136131-04-150	136131-03-040 <sup>1</sup>	136131-04-150	136131-04-006 <sup>1</sup>	136131-04-051 <sup>1</sup>		
	14-CA		136134-04-150	136134-03-040 <sup>1</sup>	136134-04-150	136134-04-006 <sup>1</sup>	136134-04-051 <sup>1</sup>		
THROW IN WIRE #3	14-UL		X	136131-06-020 <sup>1</sup>	-----	136131-02-085 <sup>1</sup>	136131-04-010 <sup>1</sup>		
	14-CA		X	136134-06-020 <sup>1</sup>	-----	136134-02-085 <sup>1</sup>	136134-04-010 <sup>1</sup>		
THROW IN WIRE #4	14-UL		X	-----	-----	X	136131-03-022 <sup>1</sup>		
	14-CA		X	-----	-----	X	136134-03-022 <sup>1</sup>		
THROW IN WIRE #5	14-UL		X	-----	-----	X	-----		
	14-CA		X	-----	-----	X	-----		
THROW IN WIRE #6	14-UL		X	-----	-----	X	-----		
	14-CA		X	-----	-----	X	-----		
THROW IN WIRE #7	14-UL		X	-----	-----	X	136131-02-005		
	14-CA		X	-----	-----	X	136134-02-005		
THROW IN WIRE #8	14-UL		X	-----	-----	X	136131-04-129		
	14-CA		X	-----	-----	X	136134-04-129		
THROW IN WIRE #9	14-UL		X	-----	-----	X	136131-12-023 <sup>1</sup>		
	14-CA		X	-----	-----	X	136134-12-023 <sup>1</sup>		
THROW IN WIRE #10	14-UL		X	-----	-----	X	136131-02-018 <sup>1</sup>		
	14-CA		X	-----	-----	X	136134-02-018 <sup>1</sup>		

- (39C)
- (39C)
- (39C)
- (670)

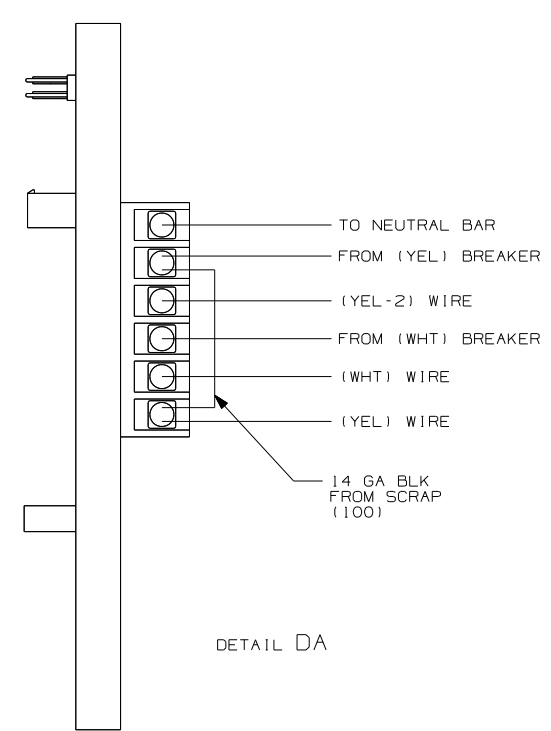
	P32T	P34H	P36G	P39K	P39F
SLIDEOUT WIRE #1	136151-05-027 <sup>2</sup>	136151-03-017 <sup>2</sup>	136151-03-030 <sup>2</sup>	136151-03-027 <sup>2</sup>	136151-06-056 <sup>2</sup>
SLIDEOUT WIRE #2	136151-03-027 <sup>2</sup>	136151-06-017 <sup>2</sup>	-----	X	136151-03-056 <sup>2</sup>
SLIDEOUT WIRE #1	X	-----	-----	136151-04-020 <sup>2</sup>	136151-04-015 <sup>2</sup>
SLIDEOUT WIRE #1	X	X	X	136151-02-017 <sup>2</sup>	136151-13-086 <sup>2</sup>
SLIDEOUT WIRE #2	X	X	X	136151-06-017 <sup>2</sup>	136151-02-048 <sup>4</sup>
SLIDEOUT WIRE #3	X	X	X	136151-06-017 <sup>2</sup>	136151-12-086 <sup>2</sup>
SLIDEOUT WIRE #4	X	X	X	X	136151-02-041 <sup>4</sup>



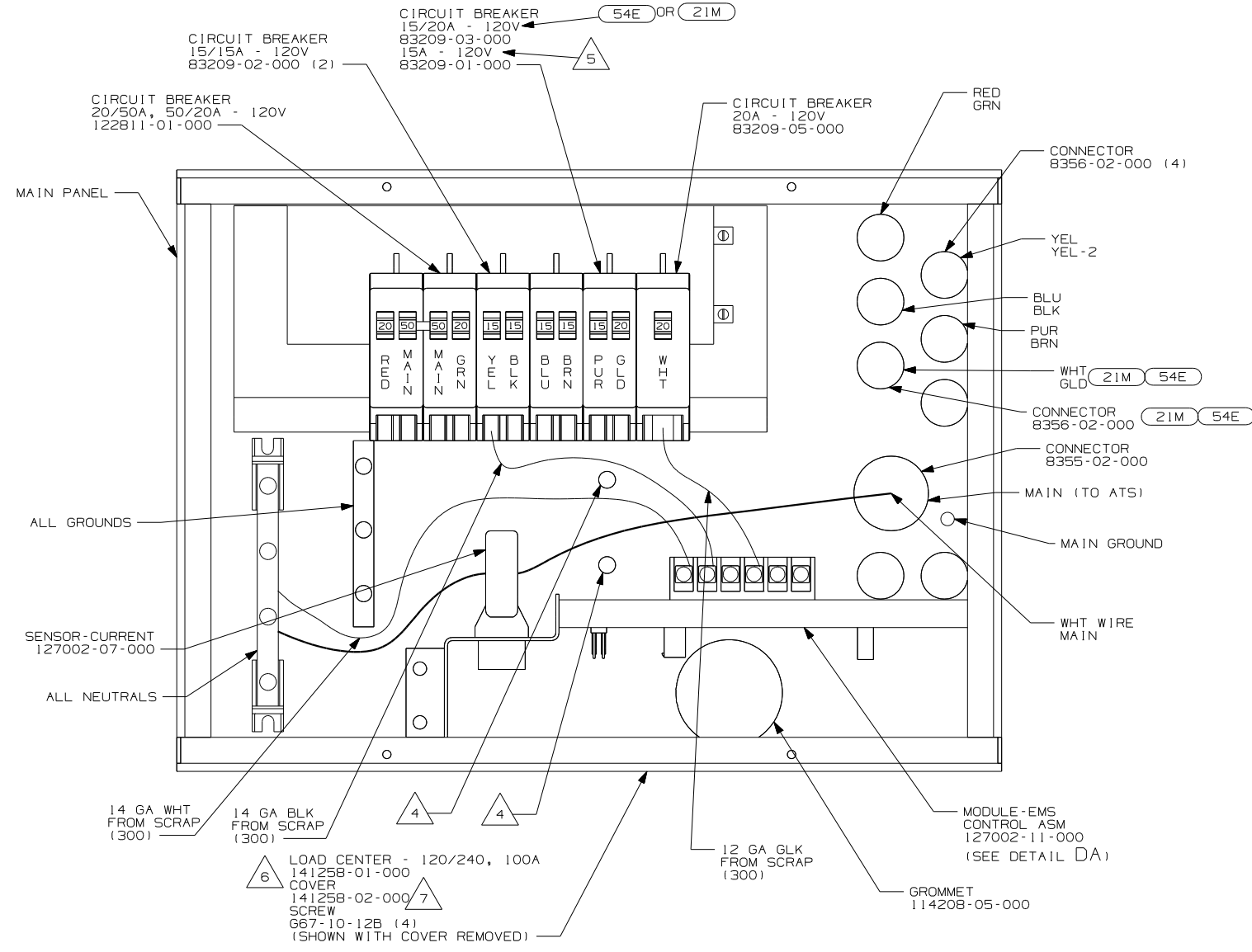
- NOTES:
- <sup>4</sup> SEE DETAIL BC FOR CONNECTOR INSTALLATION.
  - <sup>3</sup> SEE WIRING INSTL-BODY, 110V FOR ADDITIONAL INFORMATION.
  - <sup>2</sup> SEE DETAIL BB FOR CONNECTOR INSTALLATION.
  - <sup>1</sup> SEE DETAIL BA FOR CONNECTOR INSTALLATION.

- (670) GEN-7.5KW-ONAN-QUIET DIESEL
- (39C) GEN-6.5KW ONAN LP MARO GOLD
- (265) CODES/STANDARDS - CSA/CMVSS
- (1B1) CODES/STANDARDS - USA

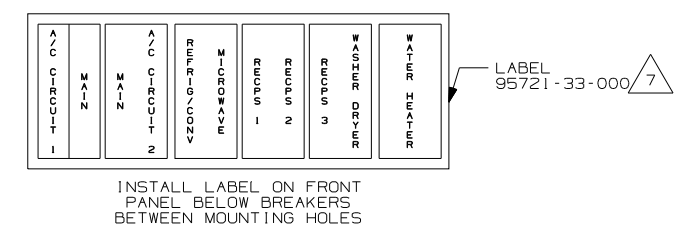
FIRST USED	05 P-SERIES
TITLE	DO NOT SCALE DRAWING
TITLE	LOAD CENTER/ATS ASM
SHEET 2	PART NO 148959



DETAIL DA



- 7 INSTALLED BY ASSEMBLY LINE.
- 6 ALL WIRES ARE TO BE 500MM LONG INSIDE OF BOX.
- 5 WITHOUT (54E) OR (21M).
- 4 ATTACH WIRES TO BACKSIDE OF LOAD CENTER, USE EXISTING HOLES AND TIE-WIRE 116673-01-000.
- 3. ALL 110V STRANDED WIRE W/O TERMINALS TO BE STRIPPED 10MM AND SOLDER DIPPED.
- 2. ALL WIRES ARE NOT SHOWN FOR CALARITY.
- 1. ALL GROUND WIRES TO BE COVERED WITH TUBING 8041-02-000.



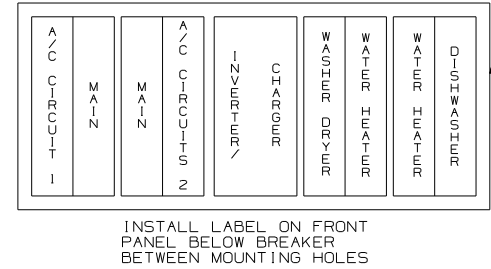
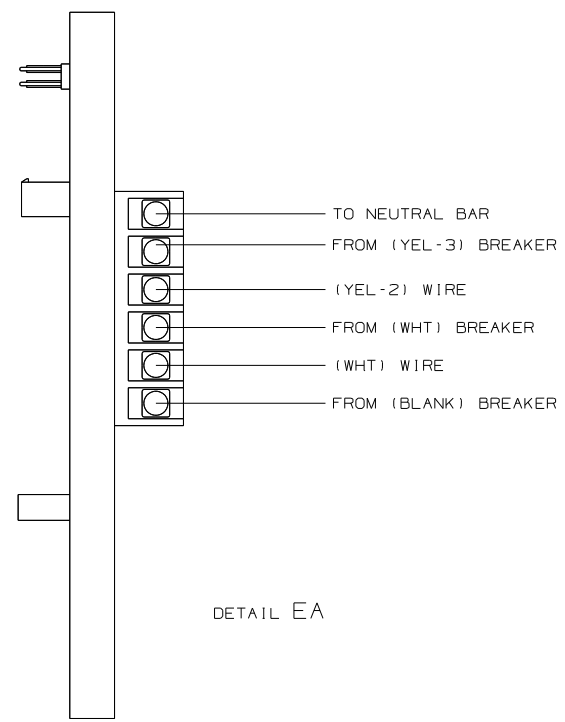
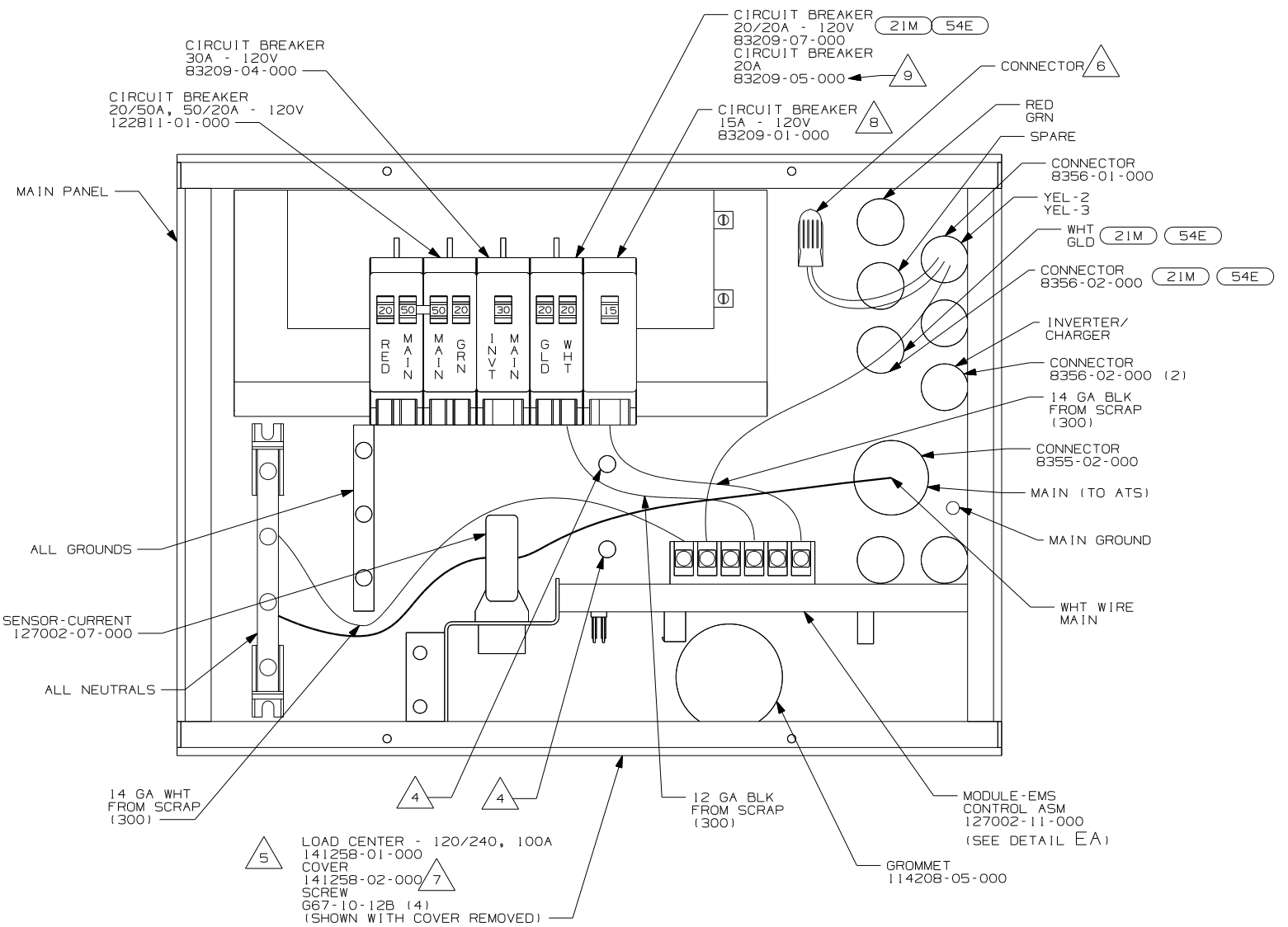
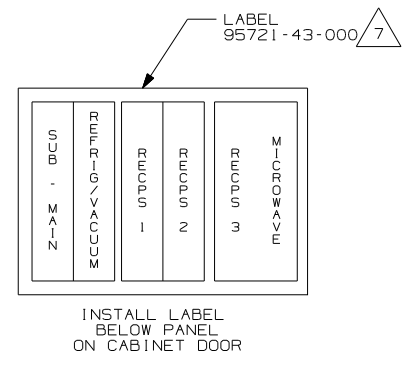
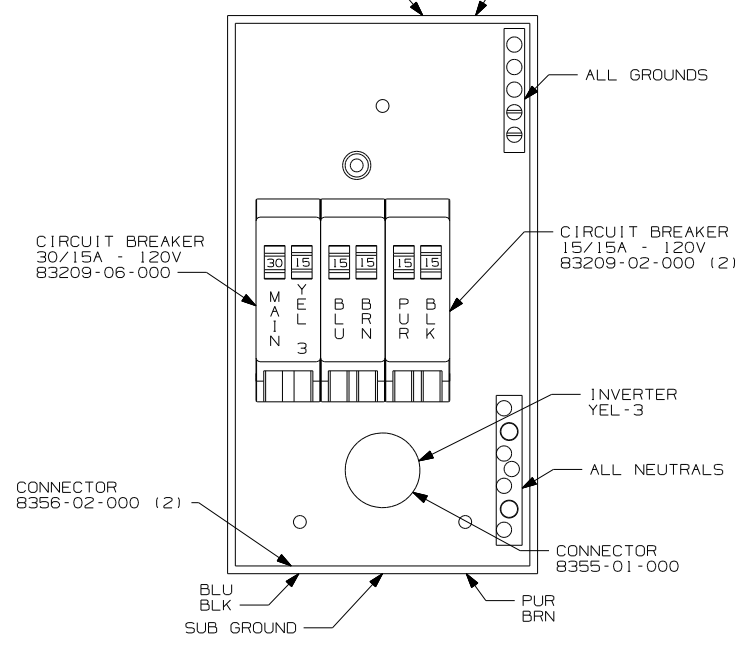
- (13B) INVERTER/CHARGER-DC/AC W/O
- (54E) WASHER/DRYER
- (21M) WASHER/DRYER PREP
- (265) CODES/STANDARDS-CSA/CMVSS
- (1B1) CODES/STANDARDS USA

FOR ELECTRICAL TORQUE SPECIFICATIONS SEE DWG NO. 128783-01-000

(X-X) FOR ELECTRICAL CALLOUTS SEE DWG NO. 121339-01-000

FIRST USED	05 P-SERIES
TITLE	DO NOT SCALE DRAWING
SHEET 3	PART NO 148959
	11/5/2004

LOAD CENTER  
109677-01-000  
SCREW  
G67-10-12B (4)  
(SHOWN WITH COVER REMOVED)



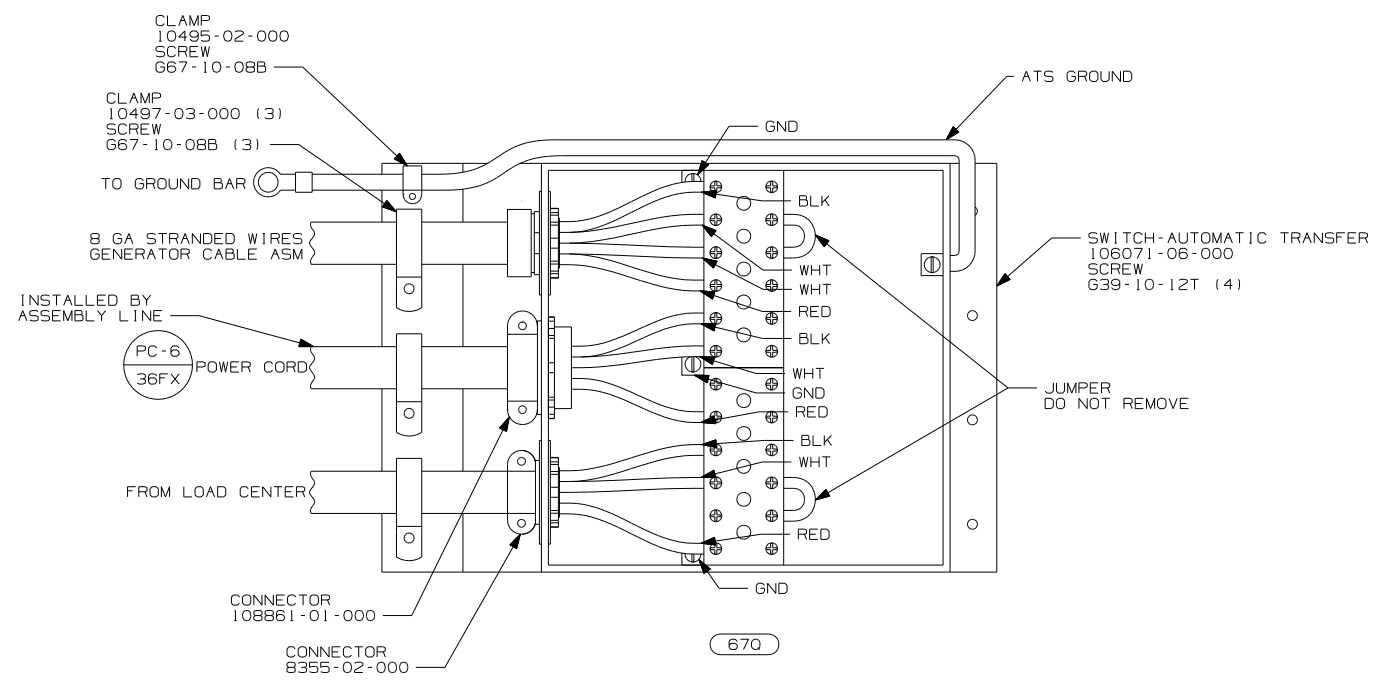
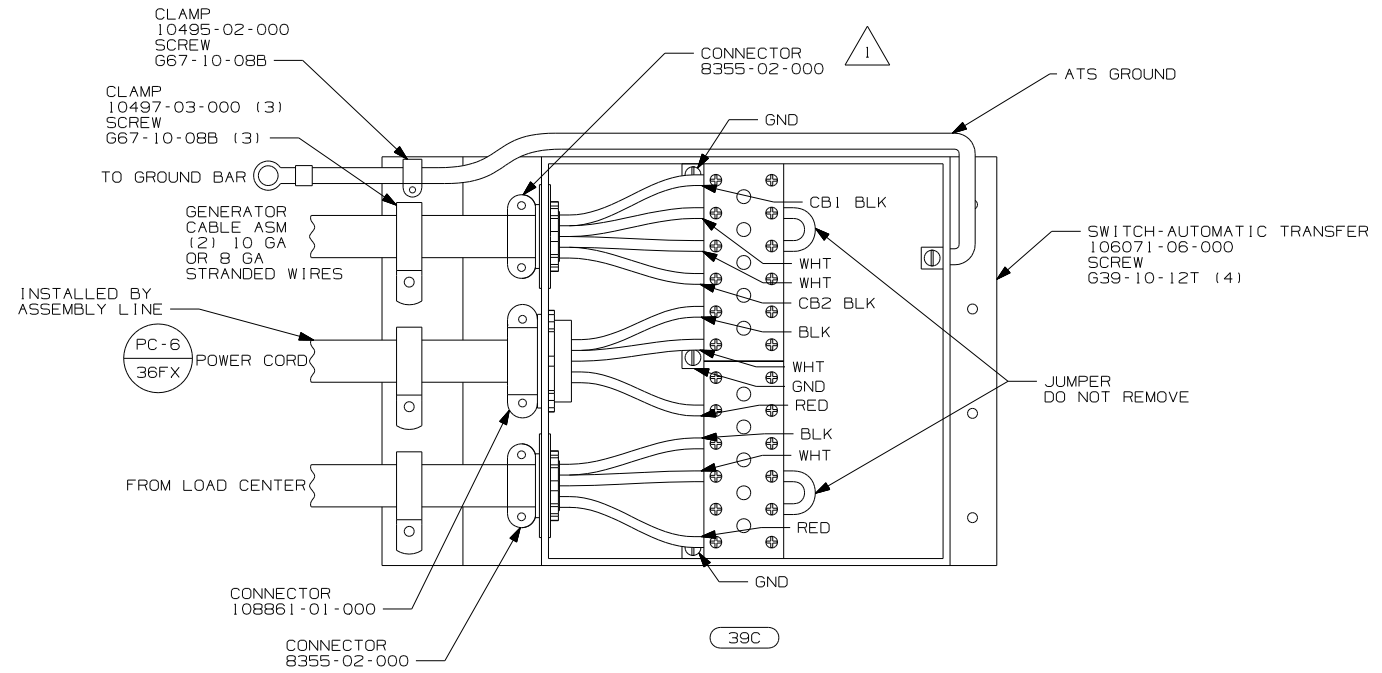
- NOTES:
1. ALL GROUND WIRES TO BE COVERED WITH TUBING 8041-02-000.
  2. ALL WIRES ARE NOT SHOWN FOR CLARITY.
  3. ALL 110V STRANDED WIRE W/O TERMINALS TO BE STRIPPED 10MM AND SOLDER DIPPED.
- 9 WITHOUT 21M OR 54E.
- 8 BREAKER AND JUMPER WIRE NEEDED TO MAKE THE EMS PANEL FUNCTION CORRECTLY.
- 7 INSTALLED BY ASSEMBLY LINE.
- 6 DO NOT CONNECT WHT WIRE FROM YEL-2, YEL-3 CIRCUITS TO NEUTRAL BAR. CONNECT TO EACH OTHER WITH CONNECTOR 8313-01-000 AS SHOWN.
- 5 ALL WIRES ARE TO BE 500MM LONG INSIDE OF BOX.
- 4 ATTACH WIRES TO BACKSIDE OF LOAD CENTER, USE EXISTING HOLES AND TIE-WIRE 116673-01-000.

FOR ELECTRICAL TORQUE SPECIFICATIONS SEE DWG NO. 128783-01-000

(X-X) FOR ELECTRICAL CALLOUTS SEE DWG NO. 121339-01-000

- 7 LABEL 95721-42-000
- 78J ELECTRICAL SYSTEM-50 AMP
  - 54E WASHER/DRYER
  - 21M WASHER/DRYER PREP
  - 13X INVERTER/CHARGER 2.0 KW
  - 265 CODES/STANDARDS-CSA/CMVSS
  - 1B1 CODES/STANDARDS USA
  - 1B1 265 78J 13X

FIRST USED	05 P-SERIES
TITLE	DO NOT SCALE DRAWING
TITLE	LOAD CENTER/ATS ASM
SHEET 4	PART NO 148959



- (670) GEN-7.5KW-ONAN-QUIET DIESEL
- (39C) GEN-6.5KW ONAN LP MARO GOLD
- (265) CODES/STANDARDS-CSA/CMVSS
- (1B1) CODES/STANDARDS USA
- (1B1) (265)

FIRST USED	05 P-SERIES
TITLE	DO NOT SCALE DRAWING
TITLE	LOAD CENTER/ATS ASM
SHEET 5	PART NO 148959

NOTES: 1 NOT USED WITH P39W & P36G.

FOR ELECTRICAL TORQUE SPECIFICATIONS SEE DWG NO. 128783-01-000

FOR ELECTRICAL CALLOUTS SEE DWG NO. 121339-01-000