



DANGER

Danger of electrical shock, burns or death. Always remove all power sources before attempting any repair, service or diagnostic work. Power can be present from shore power, generator, inverter or battery. All power sources must be disabled and secured before performing any service.

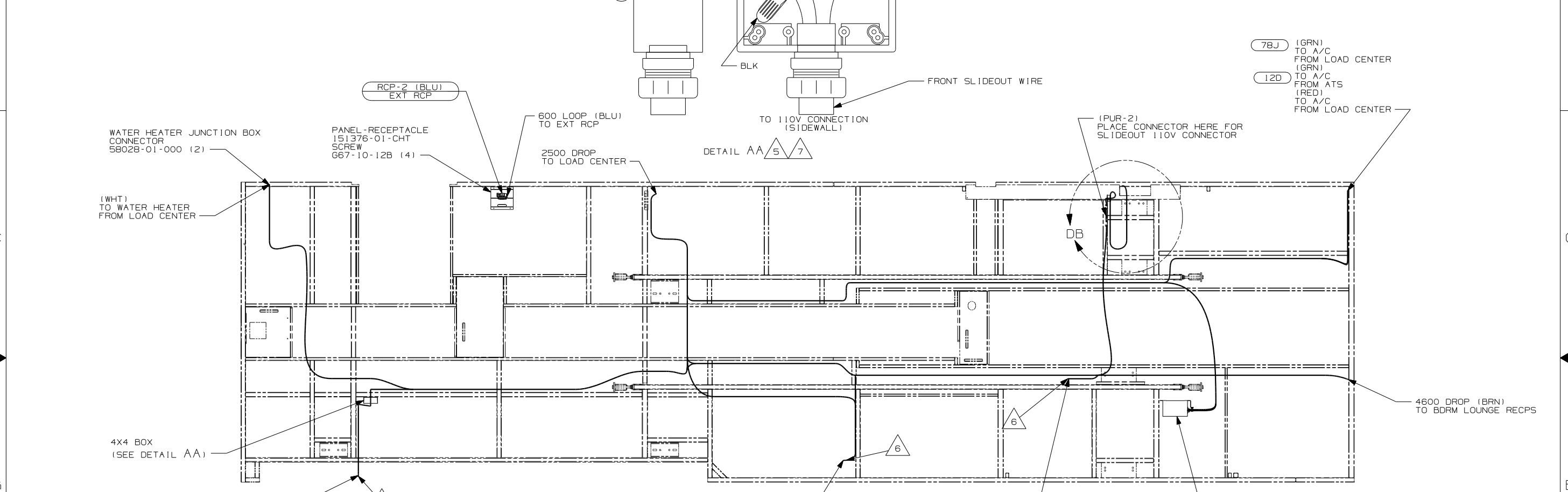


CAUTION

If you lack the skills, tools or equipment to perform diagnostic or repair work leave such work to an authorized Winnebago Industries dealer or other qualified shop.

DRAWING NO.	FEATURE
150758-01	-----
150758-11	(1B1) (12D)
150758-12	(1B1) (78J)
150758-15	(265) (12D)
150758-16	(265) (78J)

RELEASE	REV/DATE A	DWG NO 150758
REV ZONE	REVISION RECORD	DATE DFR-0R16



(78J) (GRN)
TO A/C
FROM LOAD CENTER
(GRN)
(12D) TO A/C
FROM ATS
(RED)
TO A/C
FROM LOAD CENTER

WATER HEATER JUNCTION BOX CONNECTOR 58028-01-000 (2)
(WHT) TO WATER HEATER FROM LOAD CENTER
RCP-2 (BLU) EXT RCP
600 LOOP (BLU) TO EXT RCP
2500 DROP TO LOAD CENTER
DETAIL AA 5 7
TO 110V CONNECTION (SIDEWALL)
FRONT SLIDEOUT WIRE
(PUR-2) PLACE CONNECTOR HERE FOR SLIDEOUT 110V CONNECTOR
4600 DROP (BRN) TO BDRM LOUNGE RECPS
400 DROP (BRN) FRONT SLIDEOUT WIRE TO 110V CONNECTION (SIDEWALL) FROM 4X4 BOX (CLOSEOUT PANEL)
5000 DROP (BRN) THROUGH RCP-B (LAVATORY) TO GF1-1 (LAVATORY) FROM LOAD CENTER
1000 DROP (BRN) THROW IN WIRE #1 TO RCP-B (LAVATORY) FROM 4X4 BOX (CLOSEOUT PANEL)
1000 DROP (BRN) (THROW IN WIRE #5) TO RCP-B (LAVATORY) FROM BDRM LOUNGE RECP.
3500 LOOP (PUR) THROUGH RCP-B (MONITOR) TO 110V CONNECTION UNDER BED FROM LOAD CENTER
3500 DROP (PUR-2) TO RECP BLANK (TV) FROM 110V CONNECTION FOR RIGHT REAR SLIDE
2500 DROP (GOLD) TO WASHER/DRYER RECP FROM LOAD CENTER
1000 DROP (PUR) TO 110V CONNECTION (UNDER BED) FROM RCP-B (DESK)
5 ATS PANEL

- (78J) ELECTRICAL SYSTEM 50 AMP
- (265) CODES/STANDARDS-CSA/CMVSS
- (1B1) CODES/STANDARDS USA
- (12D) ELECTRICAL SYSTEM 30 AMP

- 7 MOUNT 4X4 BOX ON CLOSEOUT PANEL OVER HOLE.
- 6 WIRE PASSES THROUGH FLOOR AT THIS POINT.
- 5 FOR MORE INFORMATION SEE LOAD CENTER/ATS ASM.

4. FOR MORE INFORMATION SEE WIRING DIAGRAM-BODY,110V.
3. ALL GROUND WIRE TO BE COVERED WITH TUBING 8041-02-000.
2. ALL 110V WIRE TO BE CLAMPED WITH CLAMP 10497-05-000 WITHIN 200MM OF OUTLET BOXES, USE SCREW G67-10-12B.
1. ALL WIRES TO BE SECURED WITH CLAMP 10495-01-000 OR CLIP 80734-01-000 EVERY 600MM. USE SCREW G67-10-12B UNLESS OTHERWISE SPECIFIED.

NOTES:

FOR ELECTRICAL TORQUE SPECIFICATIONS SEE DWG NO. 128783-01-000

FOR ELECTRICAL CALLOUTS SEE DWG NO. 121339-01-000

WINNEBAGO COPYRIGHT 2004 WINNEBAGO INDUSTRIES, INC.

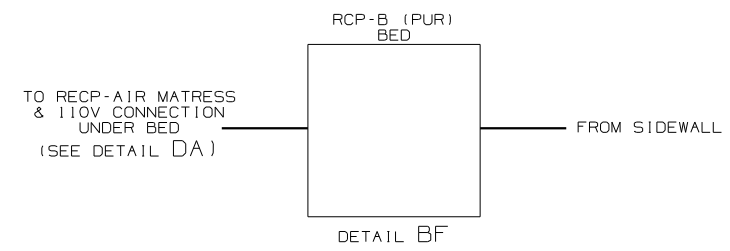
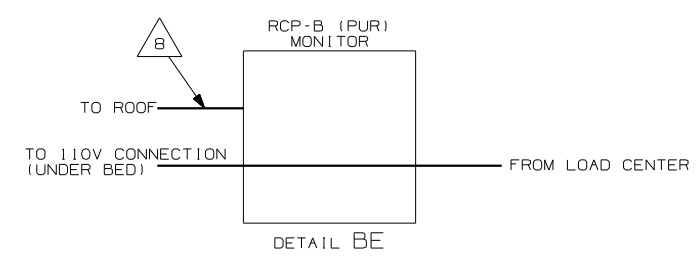
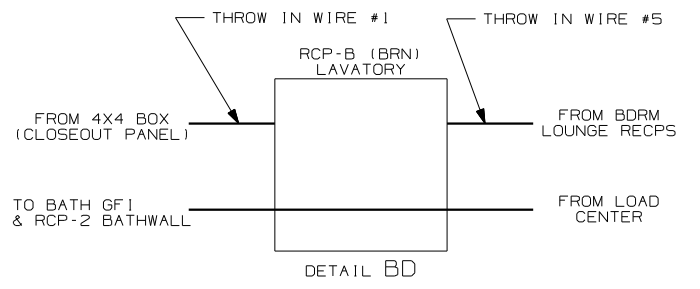
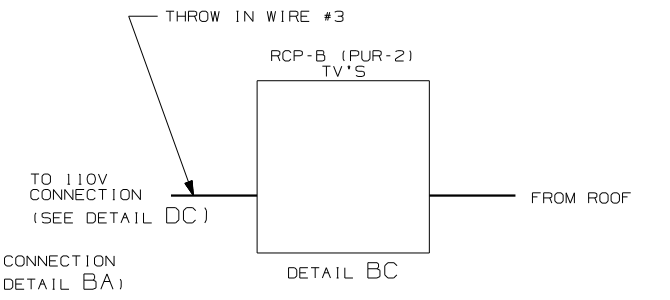
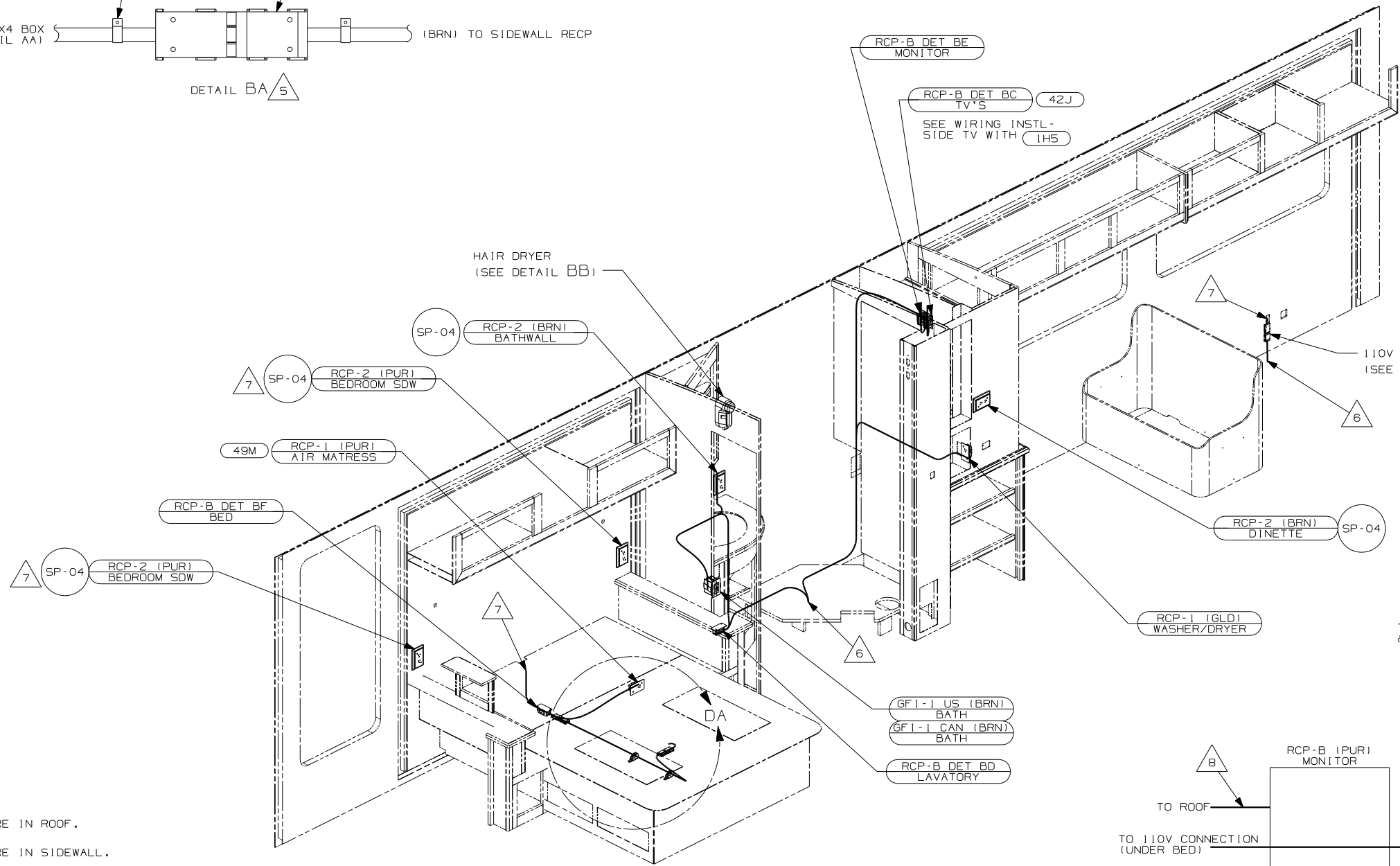
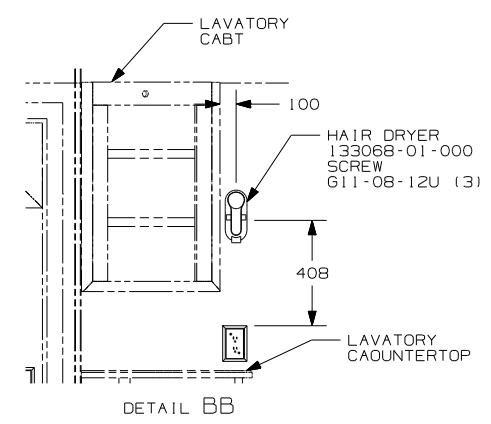
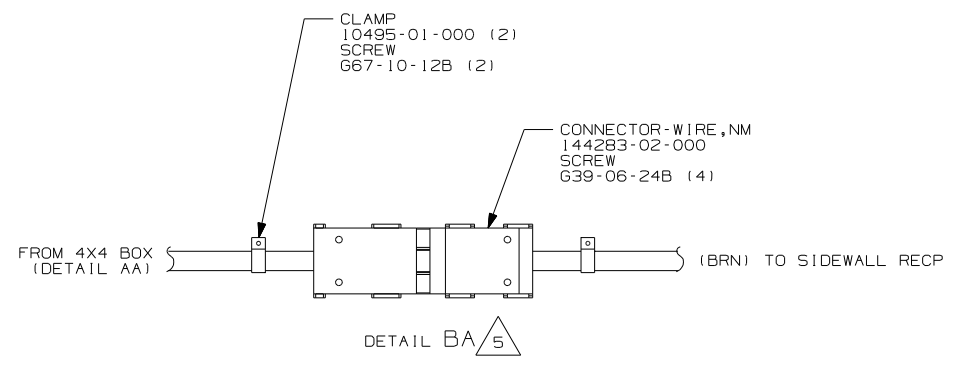
DFTR	ORIG. DATE
CHKR	ALL DIMENSIONS ARE IN MILLIMETERS
P.E.	
M.E.	FIRST USED
DSNR	05 G37B
UNSPECIFIED TOLERANCES ARE:	MATERIAL:
WHOLE DIM (X)	: 1
ONE-PLACE (X.X)	: 1.5
TWO-PLACE (X.XX)	: 0.50
ANGLE	: 1°
THIRD ANGLE PROJECTION	

DO NOT SCALE DRAWING

TITLE: WIRING INSTL-BODY, 110V

SHEET 1 OF 5 PART NO 150758

REF: 147723 1 10/4/2004



- △ 8 WIRE IN ROOF.
- △ 7 WIRE IN SIDEWALL.
- △ 6 WIRE ROUTED THROUGH FLOOR AT THIS POINT.
- △ 5 FOR ADDITIONAL INFORMATION SEE LOAD CENTER/ATS ASM.

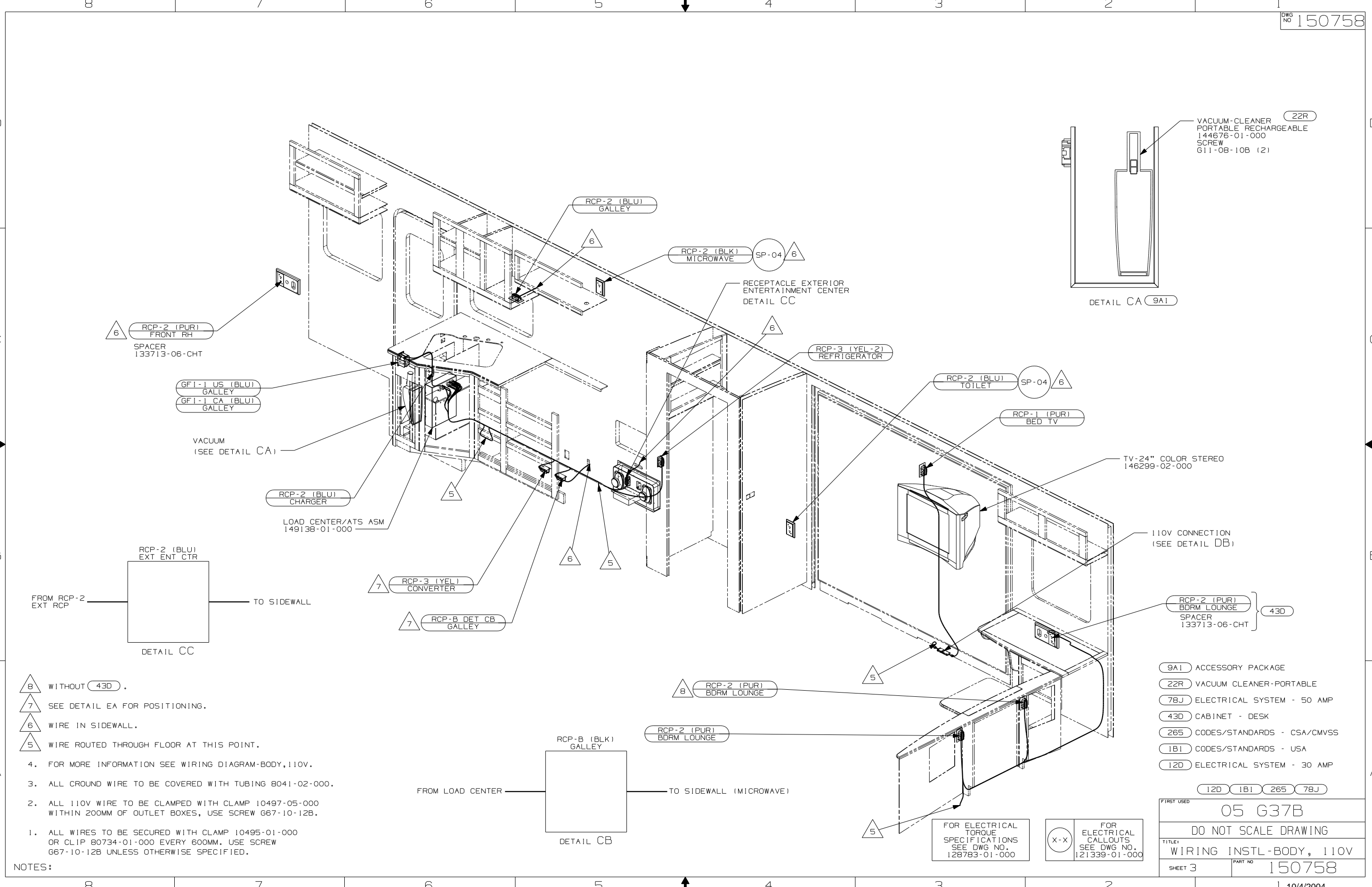
4. FOR MORE INFORMATION SEE WIRING DIAGRAM-BODY,110V.
3. ALL GROUND WIRE TO BE COVERED WITH TUBING 8041-02-000.
2. ALL 110V WIRE TO BE CLAMPED WITH CLAMP 10497-05-000 WITHIN 200MM OF OUTLET BOXES, USE SCREW G67-10-12B.
1. ALL WIRES TO BE SECURED WITH CLAMP 10495-01-000 OR CLIP 80734-01-000 EVERY 600MM. USE SCREW G67-10-12B UNLESS OTHERWISE SPECIFIED.

- (1H5) TV, FRONT-WITHOUT
- (42J) TV-24" COLOR,STEREO W/REMOTE
- (49M) SLEEP NUMBER BED-QUEEN SIZE
- (78J) ELECTRICAL SYSTEM - 50 AMP
- (265) CODES/STANDARDS-CSA/CMVSS
- (21L) DINING TABLE AND CHAIRS
- (21K) DINING/COMPUTER TABLE & CHAIRS
- (1B1) CODES/STANDARDS USA
- (14W) DINETTE
- (12D) ELECTRICAL SYSTEM - 30 AMP

FOR ELECTRICAL TORQUE SPECIFICATIONS SEE DWG NO. 128783-01-000

FOR ELECTRICAL CALLOUTS SEE DWG NO. 121339-01-000

FIRST USED	
05 G37B	
DO NOT SCALE DRAWING	
TITLE: WIRING INSTL-BODY, 110V	
SHEET 2	PART NO 150758



6 RCP-2 (PUR) FRONT RH SPACER 133713-06-CHT

GFI-1 US (BLU) GALLEY
GFI-1 CA (BLU) GALLEY

VACUUM (SEE DETAIL CA)

RCP-2 (BLU) CHARGER
LOAD CENTER/ATS ASM 149138-01-000

RCP-2 (BLU) EXT ENT CTR
FROM RCP-2 EXT RCP TO SIDEWALL
DETAIL CC

7 RCP-3 (YEL) CONVERTER

7 RCP-B DET CB GALLEY

RCP-2 (BLU) GALLEY

RCP-2 (BLK) MICROWAVE SP-04 6

RECEPTACLE EXTERIOR ENTERTAINMENT CENTER
DETAIL CC

RCP-3 (YEL-2) REFRIGERATOR

RCP-2 (BLU) TOILET SP-04 6

RCP-1 (PUR) BED TV

TV-24" COLOR STEREO 146299-02-000

110V CONNECTION (SEE DETAIL DB)

RCP-2 (PUR) BDRM LOUNGE SPACER 133713-06-CHT 43D

8 RCP-2 (PUR) BDRM LOUNGE

RCP-B (BLK) GALLEY

RCP-2 (PUR) BDRM LOUNGE

FROM LOAD CENTER TO SIDEWALL (MICROWAVE)

DETAIL CB

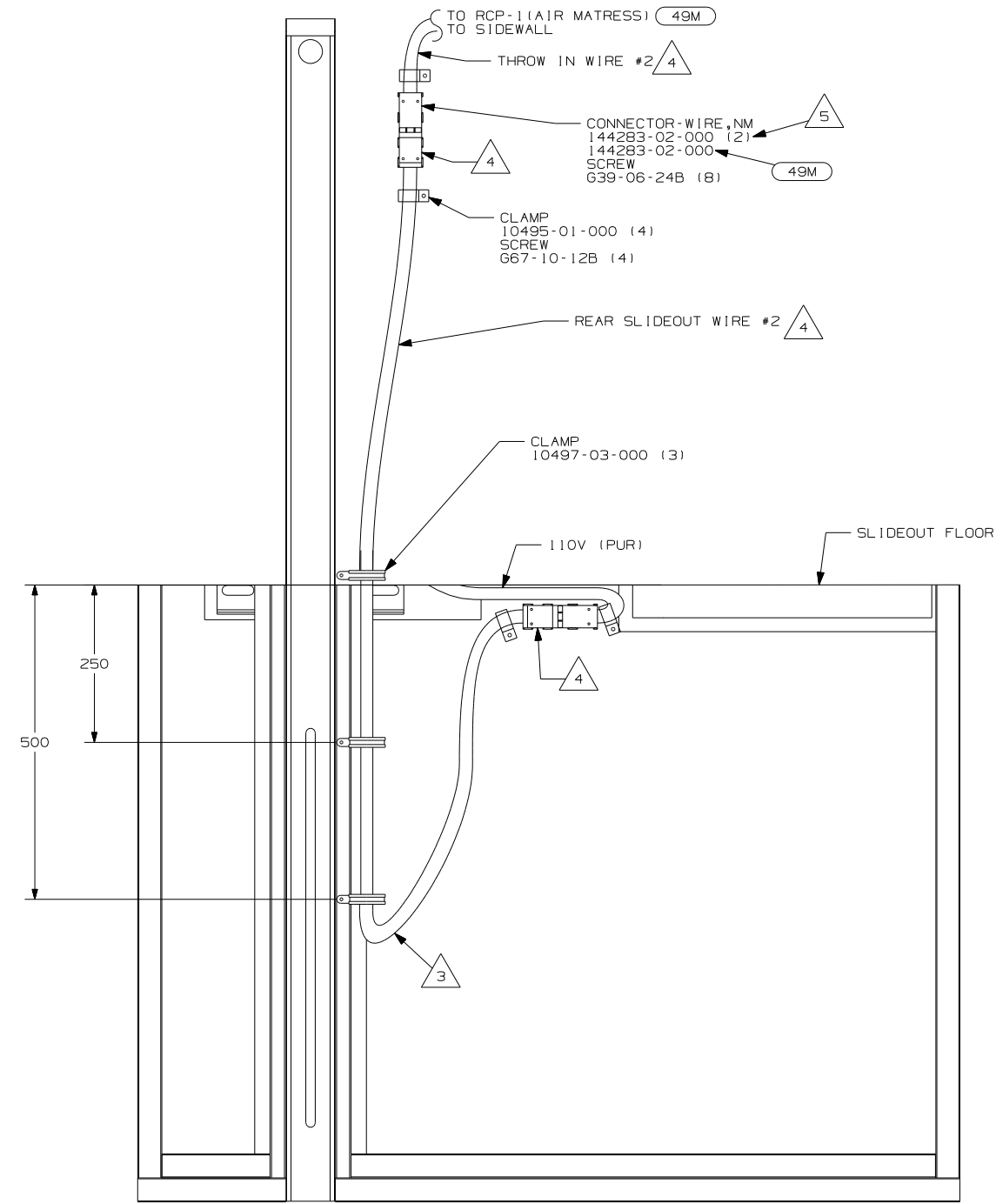
FOR ELECTRICAL TORQUE SPECIFICATIONS SEE DWG NO. 128783-01-000

X-X FOR ELECTRICAL CALLOUTS SEE DWG NO. 121339-01-000

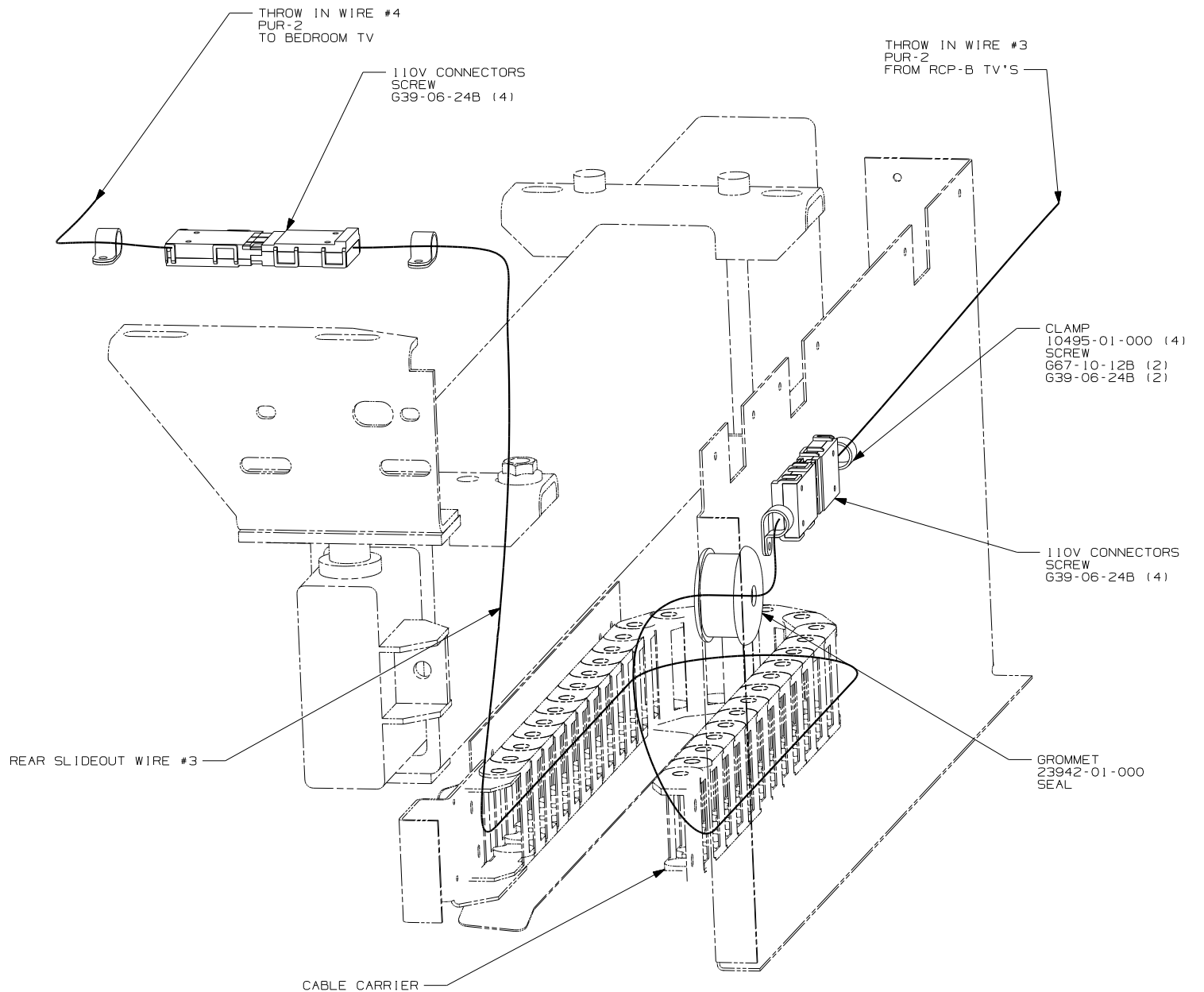
- 9A1 ACCESSORY PACKAGE
- 22R VACUUM CLEANER-PORTABLE
- 78J ELECTRICAL SYSTEM - 50 AMP
- 43D CABINET - DESK
- 265 CODES/STANDARDS - CSA/CMVSS
- 1B1 CODES/STANDARDS - USA
- 12D ELECTRICAL SYSTEM - 30 AMP

FIRST USED	
05 G37B	
DO NOT SCALE DRAWING	
TITLE: WIRING INSTL-BODY, 110V	
SHEET 3	PART NO 150758

- NOTES:
1. ALL WIRES TO BE SECURED WITH CLAMP 10495-01-000 OR CLIP 80734-01-000 EVERY 600MM. USE SCREW 667-10-12B UNLESS OTHERWISE SPECIFIED.
 2. ALL 110V WIRE TO BE CLAMPED WITH CLAMP 10497-05-000 WITHIN 200MM OF OUTLET BOXES, USE SCREW 667-10-12B.
 3. ALL GROUND WIRE TO BE COVERED WITH TUBING 8041-02-000.
 4. FOR MORE INFORMATION SEE WIRING DIAGRAM-BODY,110V.
5. WIRE ROUTED THROUGH FLOOR AT THIS POINT.
6. WIRE IN SIDEWALL.
7. SEE DETAIL EA FOR POSITIONING.
8. WITHOUT 43D.



DETAIL DA 4



DETAIL DB

- 5 WITH OUT 49M .
- 4 FOR MORE INFORMATION SEE LOAD CENTER/ATS ASM.
- 3 MAKE THE LOOP AS SMALL AS POSSIBLE WHEN SLIDEOUT IS COMPLETELY RETRACTED.

2. RUN 12V WIRE ALONG WITH REAR SLIDEOUT WIRE.
1. WIRE MUST BE ROUTED THROUGH CLAMPS AS SHOWN.

NOTES:

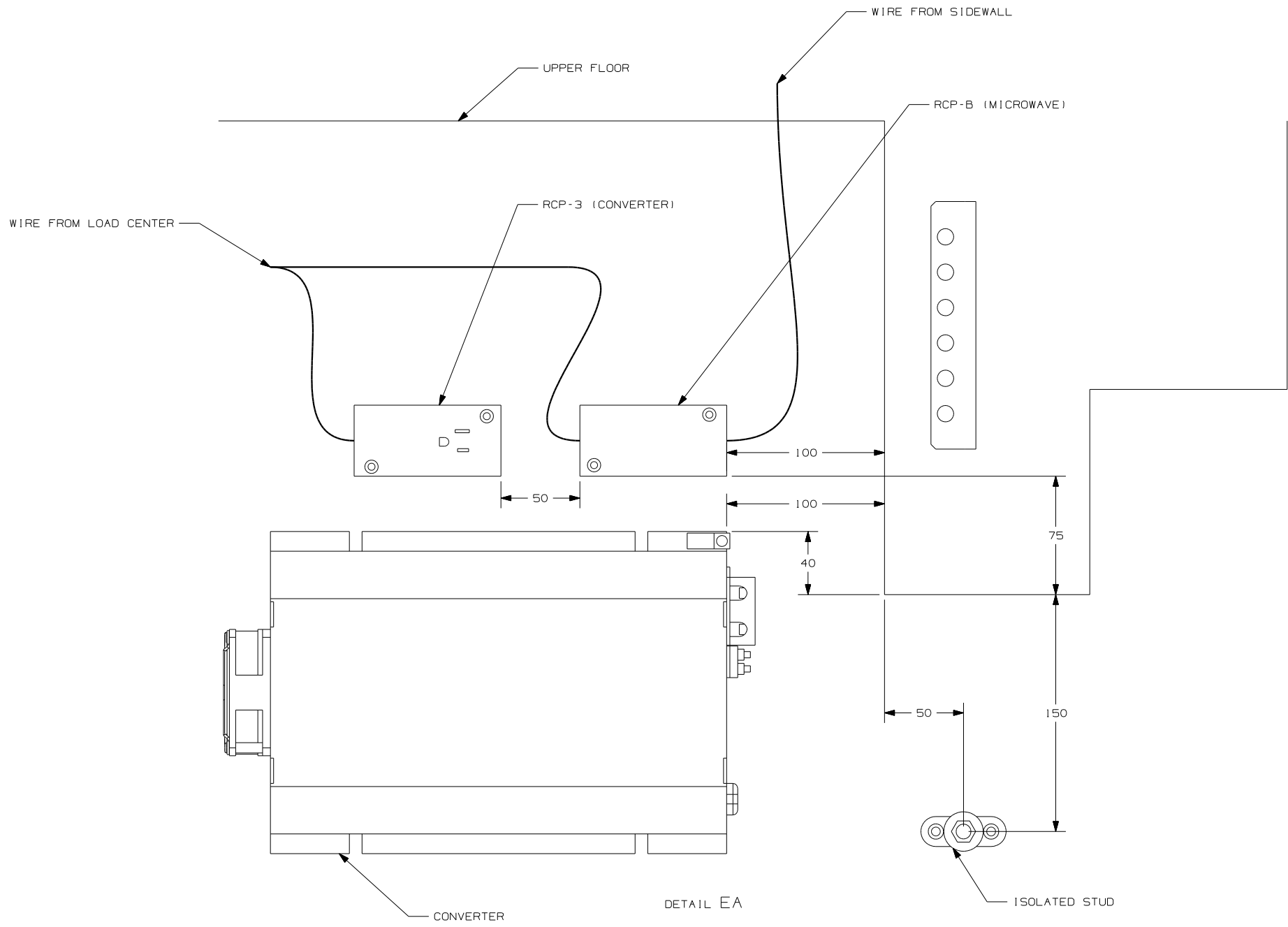
- 49M SLEEP NUMBER BED-QUEEN SIZE
- 78J ELECTRICAL SYSTEM - 50 AMP
- 265 CODES/STANDARDS - CSA/CMVSS
- 1B1 CODES/STANDARDS - USA
- 12D ELECTRICAL SYSTEM - 30 AMP

12D 1B1 265 78J

FOR ELECTRICAL TORQUE SPECIFICATIONS SEE DWG NO. 128783-01-000

X-X FOR ELECTRICAL CALLOUTS SEE DWG NO. 121339-01-000

FIRST USED	
05 G37B	
DO NOT SCALE DRAWING	
TITLE:	
WIRING INSTL-BODY, 110V	
SHEET 4	PART NO
	150758



FOR ELECTRICAL TORQUE SPECIFICATIONS SEE DWG NO. 128783-01-000

(X-X) FOR ELECTRICAL CALLOUTS SEE DWG NO. 121339-01-000

FIRST USED	05 G37B
DO NOT SCALE DRAWING	
TITLE:	WIRING INSTL-BODY, 110V
SHEET 5	PART NO 150758