



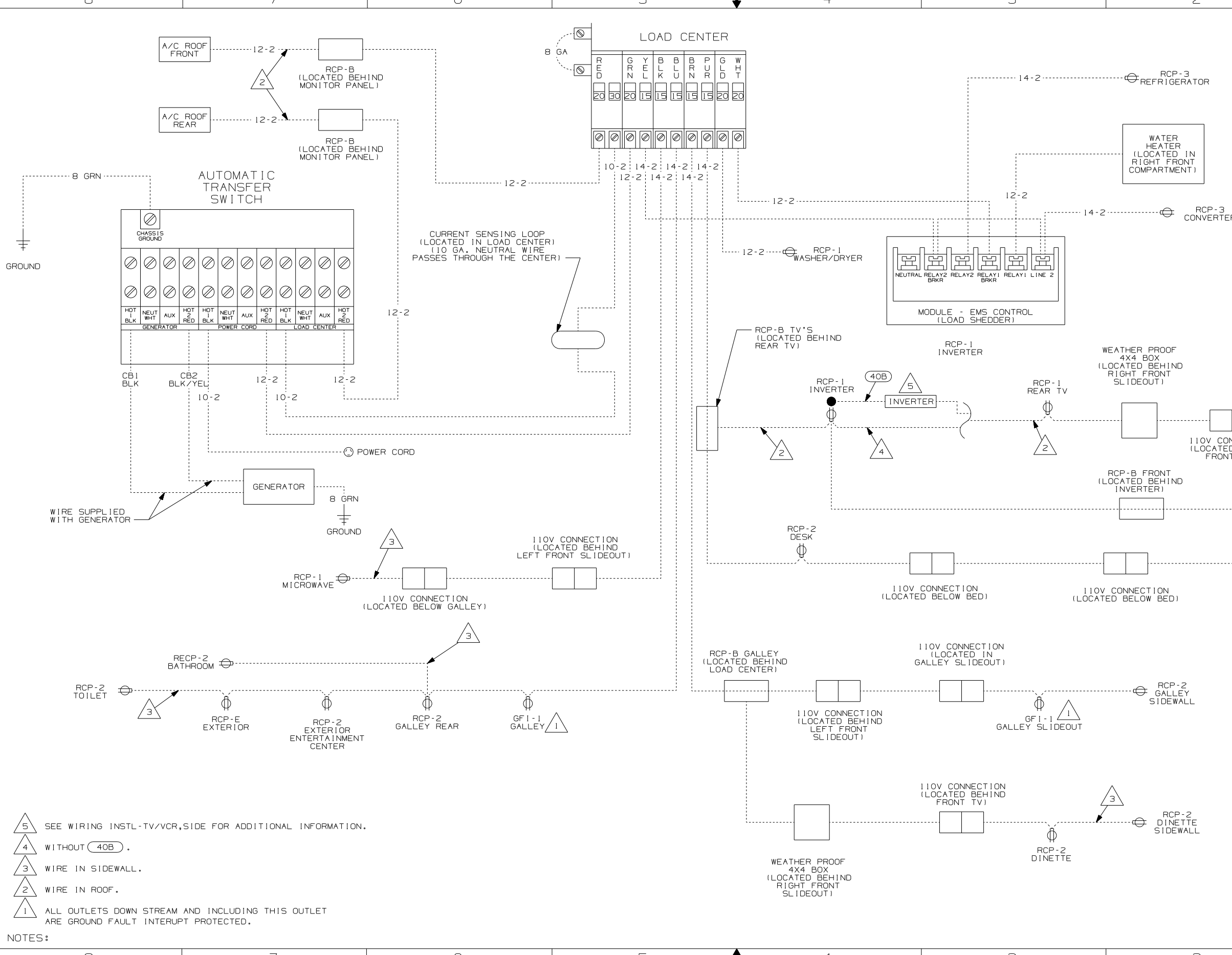
DANGER

Danger of electrical shock, burns or death. Always remove all power sources before attempting any repair, service or diagnostic work. Power can be present from shore power, generator, inverter or battery. All power sources must be disabled and secured before performing any service.



CAUTION

If you lack the skills, tools or equipment to perform diagnostic or repair work leave such work to an authorized Winnebago Industries dealer or other qualified shop.



- NOTES:
- 5 SEE WIRING INSTL-TV/VCR,SIDE FOR ADDITIONAL INFORMATION.
 - 4 WITHOUT (40B) .
 - 3 WIRE IN SIDEWALL.
 - 2 WIRE IN ROOF.
 - 1 ALL OUTLETS DOWN STREAM AND INCLUDING THIS OUTLET ARE GROUND FAULT INTERUPT PROTECTED.

- (1B2) WTR HTR-10GAL/ELEC/LP/MTR AID
- (53D) WTR HTR-6GAL/ELE/LP/MOTORAID
- (40B) INVERTER-DC/AC, 300 WATT
- (265) CODES/STANDARDS-CSA/CMVSS
- (1B1) CODES/STANDARDS USA
- (12D) ELECTRICAL SYSTEM-30 AMP

WINNEBAGO COPYRIGHT 2004 WINNEBAGO INDUSTRIES, INC.

DFTR	ORIG. DATE
CHKR	ALL DIMENSIONS ARE IN MILLIMETERS
P.E.	FIRST USED
M.E.	05 F38J
DSNR	

UNSPECIFIED TOLERANCES ARE: MATERIAL:

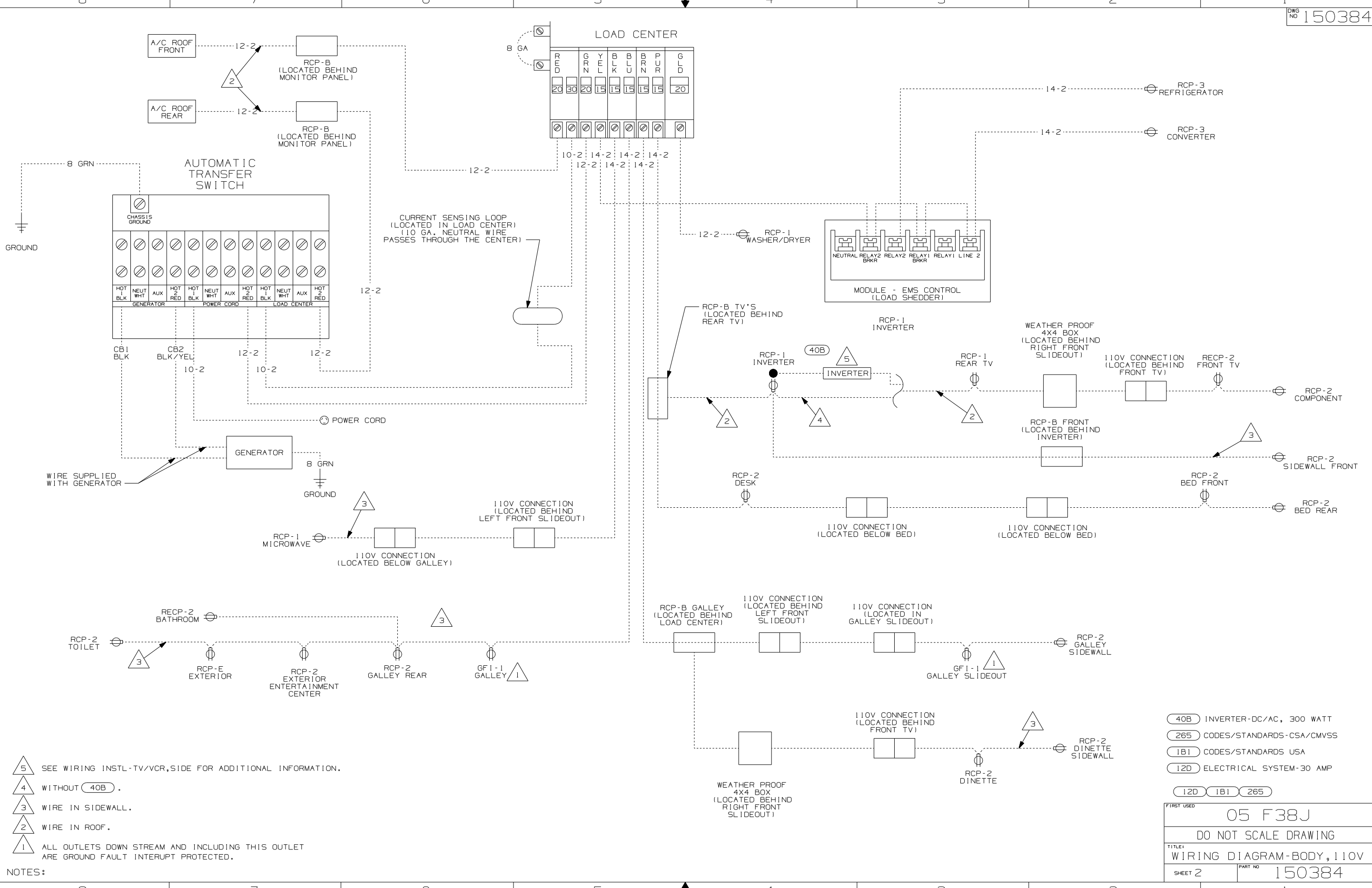
THIRD ANGLE PROJECTION

DO NOT SCALE DRAWING

TITLE: WIRING DIAGRAM-BODY, 110V

SHEET 1 OF 4 PART NO 150384

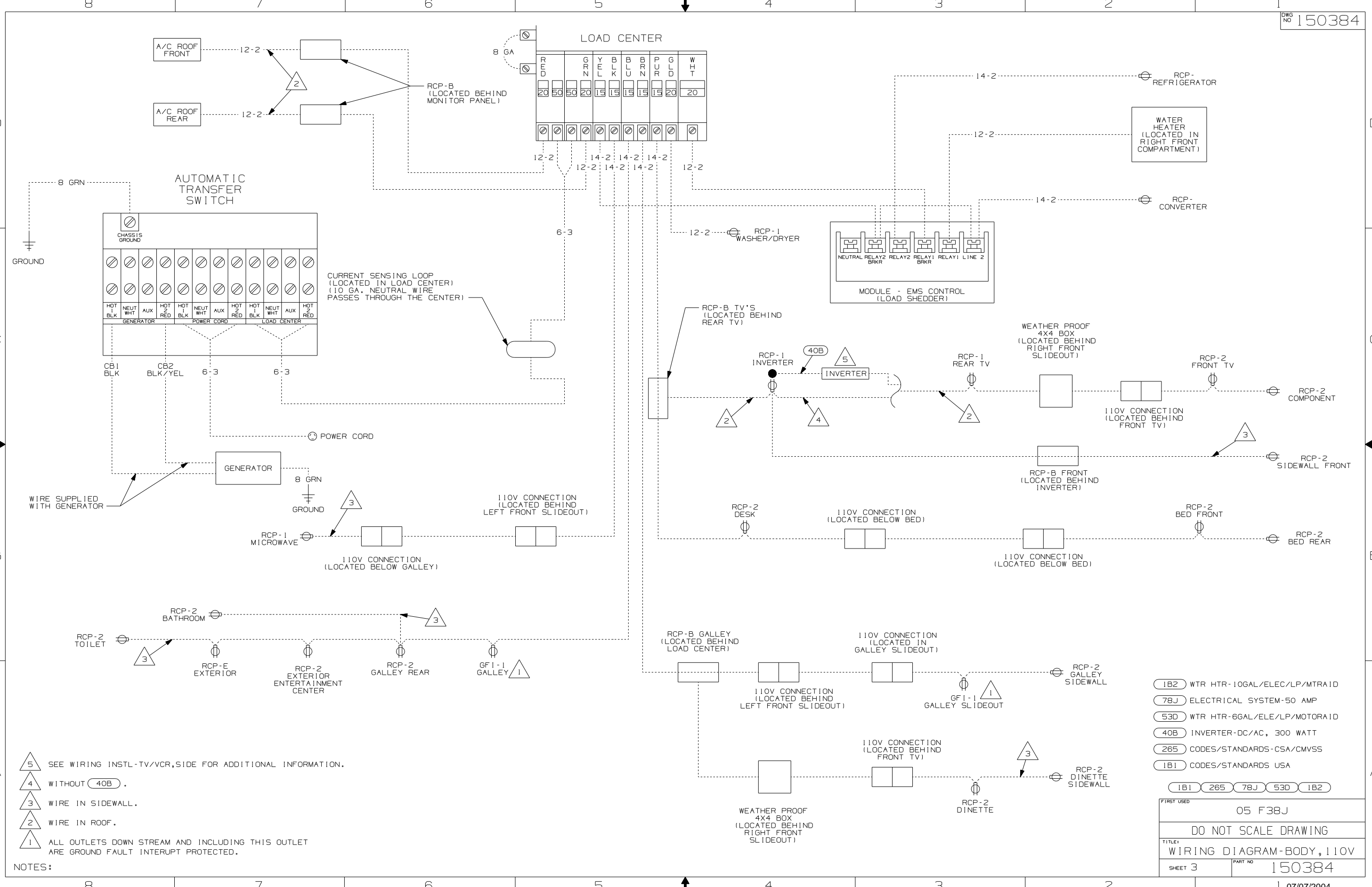
REF: 148938-A | 07/07/2004



- NOTES:
- 5 SEE WIRING INSTL-TV/VCR,SIDE FOR ADDITIONAL INFORMATION.
 - 4 WITHOUT 40B .
 - 3 WIRE IN SIDEWALL.
 - 2 WIRE IN ROOF.
 - 1 ALL OUTLETS DOWN STREAM AND INCLUDING THIS OUTLET ARE GROUND FAULT INTERRUPT PROTECTED.

- 40B INVERTER-DC/AC, 300 WATT
- 265 CODES/STANDARDS-CSA/CMVSS
- 1B1 CODES/STANDARDS USA
- 12D ELECTRICAL SYSTEM-30 AMP

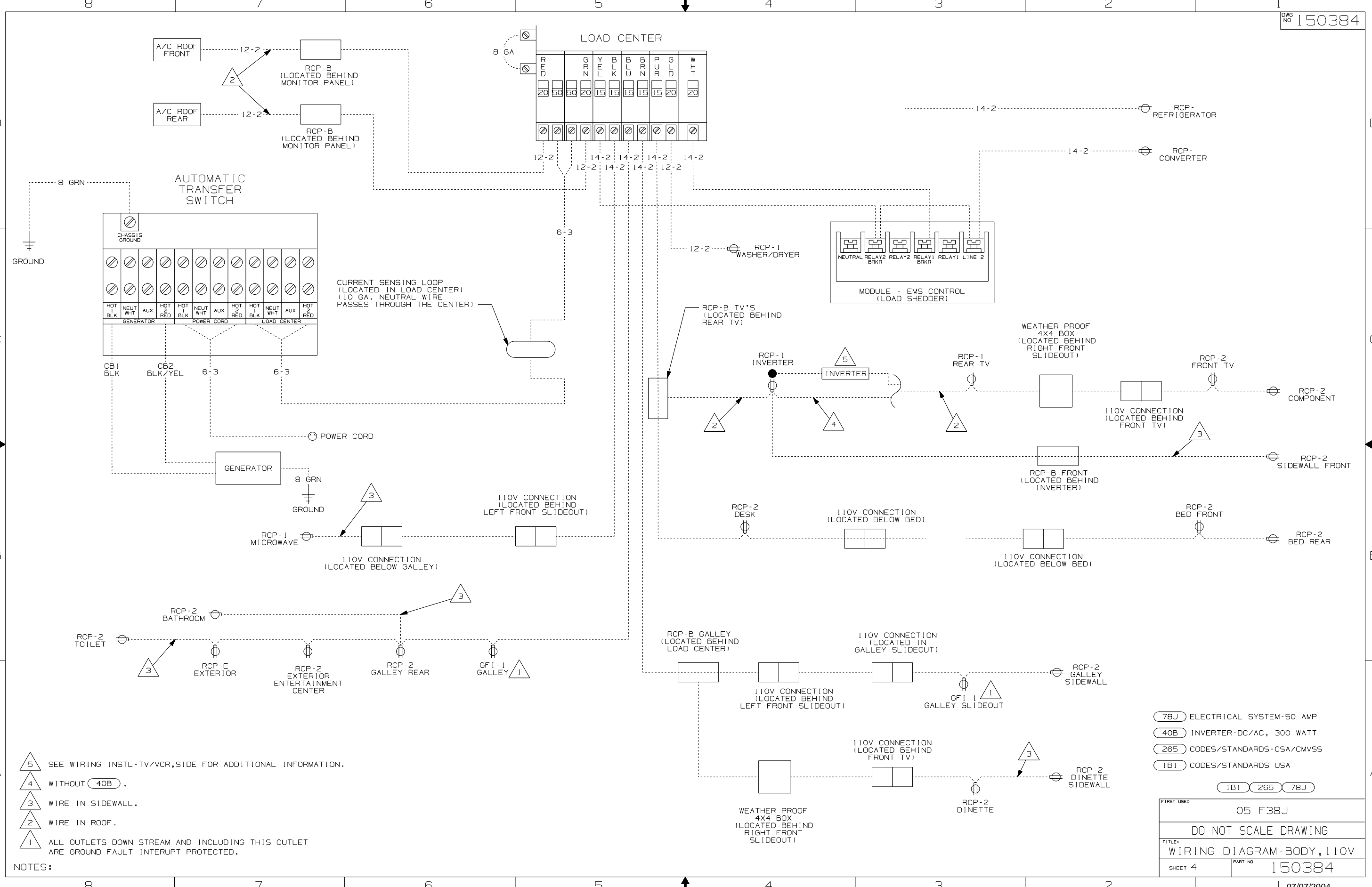
FIRST USED	05 F38J
TITLE	DO NOT SCALE DRAWING
TITLE	WIRING DIAGRAM-BODY, 110V
SHEET 2	PART NO 150384



- NOTES:
- 5 SEE WIRING INSTL-TV/VCR,SIDE FOR ADDITIONAL INFORMATION.
 - 4 WITHOUT 40B .
 - 3 WIRE IN SIDEWALL.
 - 2 WIRE IN ROOF.
 - 1 ALL OUTLETS DOWN STREAM AND INCLUDING THIS OUTLET ARE GROUND FAULT INTERRUPT PROTECTED.

1B2	WTR HTR-10GAL/ELEC/LP/MTR/ID
78J	ELECTRICAL SYSTEM-50 AMP
53D	WTR HTR-6GAL/ELE/LP/MOTOR/ID
40B	INVERTER-DC/AC, 300 WATT
265	CODES/STANDARDS-CSA/CMVSS
1B1	CODES/STANDARDS USA

FIRST USED	05 F38J
TITLE	DO NOT SCALE DRAWING
	WIRING DIAGRAM-BODY, 110V
SHEET 3	PART NO 150384



- NOTES:
- 5 SEE WIRING INSTL-TV/VCR,SIDE FOR ADDITIONAL INFORMATION.
 - 4 WITHOUT 40B .
 - 3 WIRE IN SIDEWALL.
 - 2 WIRE IN ROOF.
 - 1 ALL OUTLETS DOWN STREAM AND INCLUDING THIS OUTLET ARE GROUND FAULT INTERRUPT PROTECTED.

- 78J ELECTRICAL SYSTEM-50 AMP
- 40B INVERTER-DC/AC, 300 WATT
- 265 CODES/STANDARDS-CSA/CMVSS
- 1B1 CODES/STANDARDS USA

FIRST USED	05 F38J
TITLE	DO NOT SCALE DRAWING
WIRING DIAGRAM-BODY, 110V	
SHEET 4	PART NO 150384