



DANGER

Danger of electrical shock, burns or death. Always remove all power sources before attempting any repair, service or diagnostic work. Power can be present from shore power, generator, inverter or battery. All power sources must be disabled and secured before performing any service.



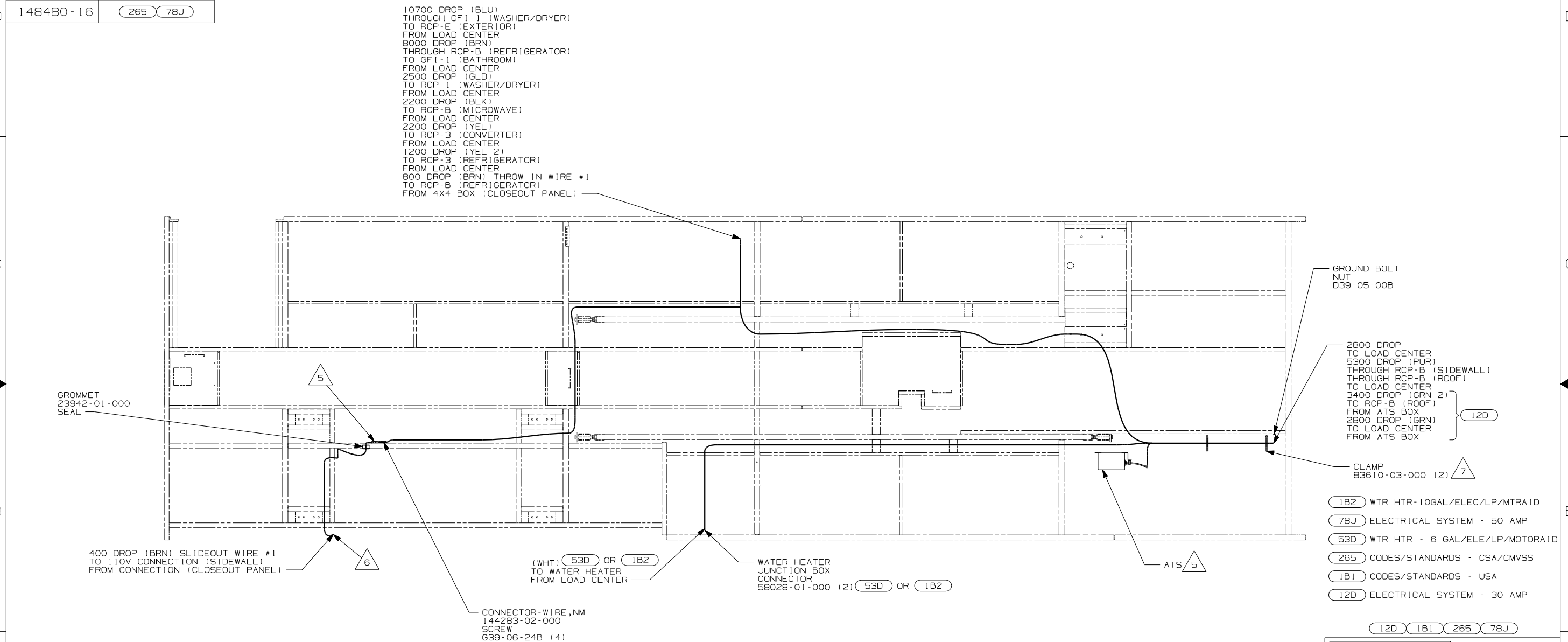
CAUTION

If you lack the skills, tools or equipment to perform diagnostic or repair work leave such work to an authorized Winnebago Industries dealer or other qualified shop.

DRAWING NO.	FEATURE
148480-01	-----
148480-11	(1B1) (12D)
148480-12	(1B1) (78J)
148480-15	(265) (12D)
148480-16	(265) (78J)

RELEASE	REV DATE	DWG NO
A		148480
REV ZONE	REVISION RECORD	DATE DFR-0816

10700 DROP (BLU)
 THROUGH GF1-1 (WASHER/DRYER)
 TO RCP-E (EXTERIOR)
 FROM LOAD CENTER
 8000 DROP (BRN)
 THROUGH RCP-B (REFRIGERATOR)
 TO GF1-1 (BATHROOM)
 FROM LOAD CENTER
 2500 DROP (GLD)
 TO RCP-1 (WASHER/DRYER)
 FROM LOAD CENTER
 2200 DROP (BLK)
 TO RCP-B (MICROWAVE)
 FROM LOAD CENTER
 2200 DROP (YEL)
 TO RCP-3 (CONVERTER)
 FROM LOAD CENTER
 1200 DROP (YEL 2)
 TO RCP-3 (REFRIGERATOR)
 FROM LOAD CENTER
 800 DROP (BRN) THROW IN WIRE #1
 TO RCP-B (REFRIGERATOR)
 FROM 4X4 BOX (CLOSEOUT PANEL)



- 7 CLAMP WIRING TO LOWER FLOOR FROM THE ATS TO THE BACK FOR THE UNIT.
- 6 WIRE PASSES THROUGH FLOOR AT THIS POINT.
- 5 FOR MORE INFORMATION SEE LOAD CENTER/ATS ASM.
4. FOR MORE INFORMATION SEE WIRING DIAGRAM-BODY, 110V.
3. ALL GROUND WIRE TO BE COVERED WITH TUBING 8041-02-000.
2. ALL 110V WIRE TO BE CLAMPED WITH CLAMP 10497-05-000 WITHIN 200MM OF OUTLET BOXES, USE SCREW 667-10-12B.
1. ALL WIRES TO BE SECURED WITH CLAMP 10495-01-000 OR CLIP 80734-01-000 EVERY 600MM. USE SCREW 667-10-12B UNLESS OTHERWISE SPECIFIED.

NOTES:

FOR ELECTRICAL TORQUE SPECIFICATIONS SEE DWG NO. 128783-01-000

FOR ELECTRICAL CALLOUTS SEE DWG NO. 121339-01-000

WINNEBAGO INDUSTRIES, INC. COPYRIGHT 2004

DFTR	ORIG. DATE
CHKR	ALL DIMENSIONS ARE IN MILLIMETERS
P.E.	
M.E.	FIRST USED
DSNR	05 F36M

UNSPECIFIED TOLERANCES ARE: MATERIAL:

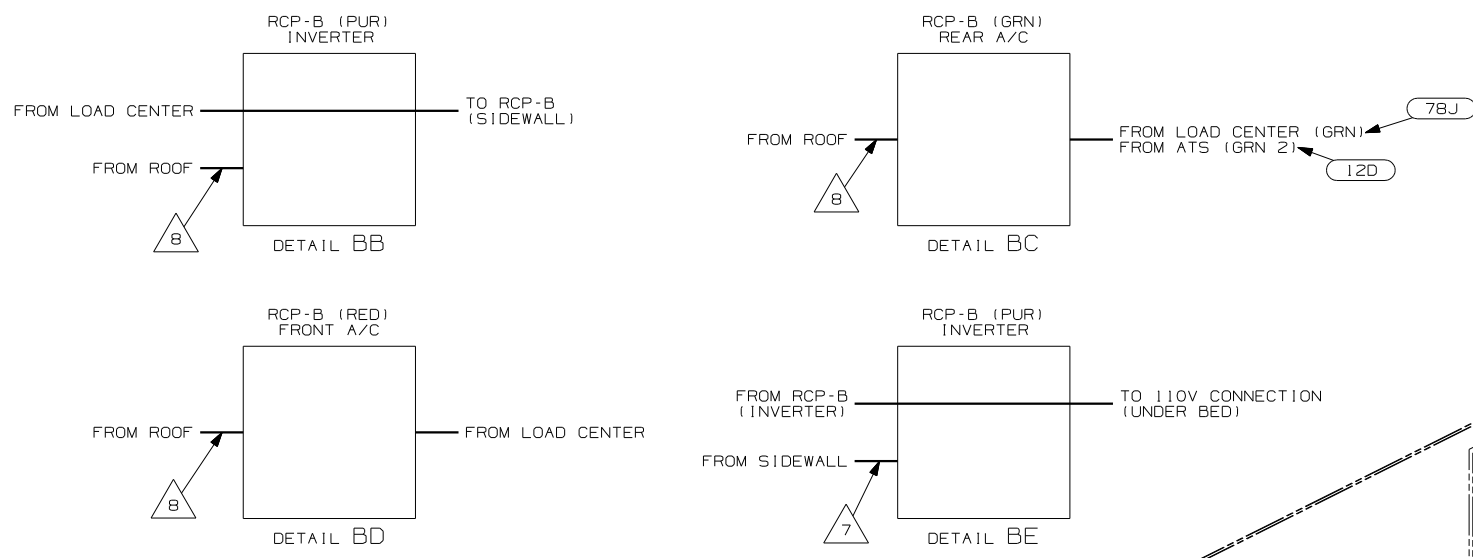
WHOLE DIM (X)	: 1	*
ONE-PLACE (X.X)	: 1.5	*
TWO-PLACE (X.XX)	: 0.50	*
ANGLE	: 1°	*
THIRD ANGLE PROJECTION		*

DO NOT SCALE DRAWING

TITLE: WIRING INSTL-BODY, 110V

SHEET 1 of 4 PART NO 148480

REF: 145424 1 7/1/2004



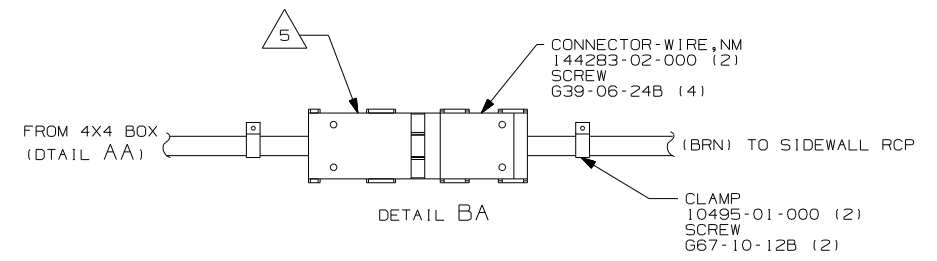
420 TV-20"
149040-02-000
CABLE ASM-COAX
87105-01-009

- RCP-B DET BB
INVERTER
- RCP-B DET BC
REAR A/C
- RCP-B DET BD
FRONT A/C
- RCP-1 (PUR 2)
BEDROOM TV
- RCP-B DET BE
SIDEWALL

CLAMP
83610-03-000 (4)

RCP-2 (PUR)
SDW W/D SP-04 7

RCP-2 (BRN)
SDW DINETTE SP-04 7



- 8 WIRE IN ROOF.
 - 7 WIRE IN SIDEWALL.
 - 6 WIRE ROUTED THROUGH FLOOR AT THIS POINT.
 - 5 FOR MORE INFORMATION SEE LOAD CENTER/ATS ASM.
4. FOR MORE INFORMATION SEE WIRING DIAGRAM-BODY,110V.
 3. ALL GROUND WIRES TO BE COVERED WITH TUBING 8041-02-000.
 2. ALL 110V WIRE TO BE CLAMPED WITH CLAMP 10497-05-000 WITHIN 200MM OF OUTLET BOXES, USE SCREW 667-10-12B.
 1. ALL WIRES TO BE SECURED WITH CLAMP 10495-01-000 OR CLIP 80734-01-000 EVERY 600MM. USE SCREW 667-10-12B UNLESS OTHERWISE SPECIFIED.

NOTES:

LOAD CENTER/ATS ASM
148484-01-000

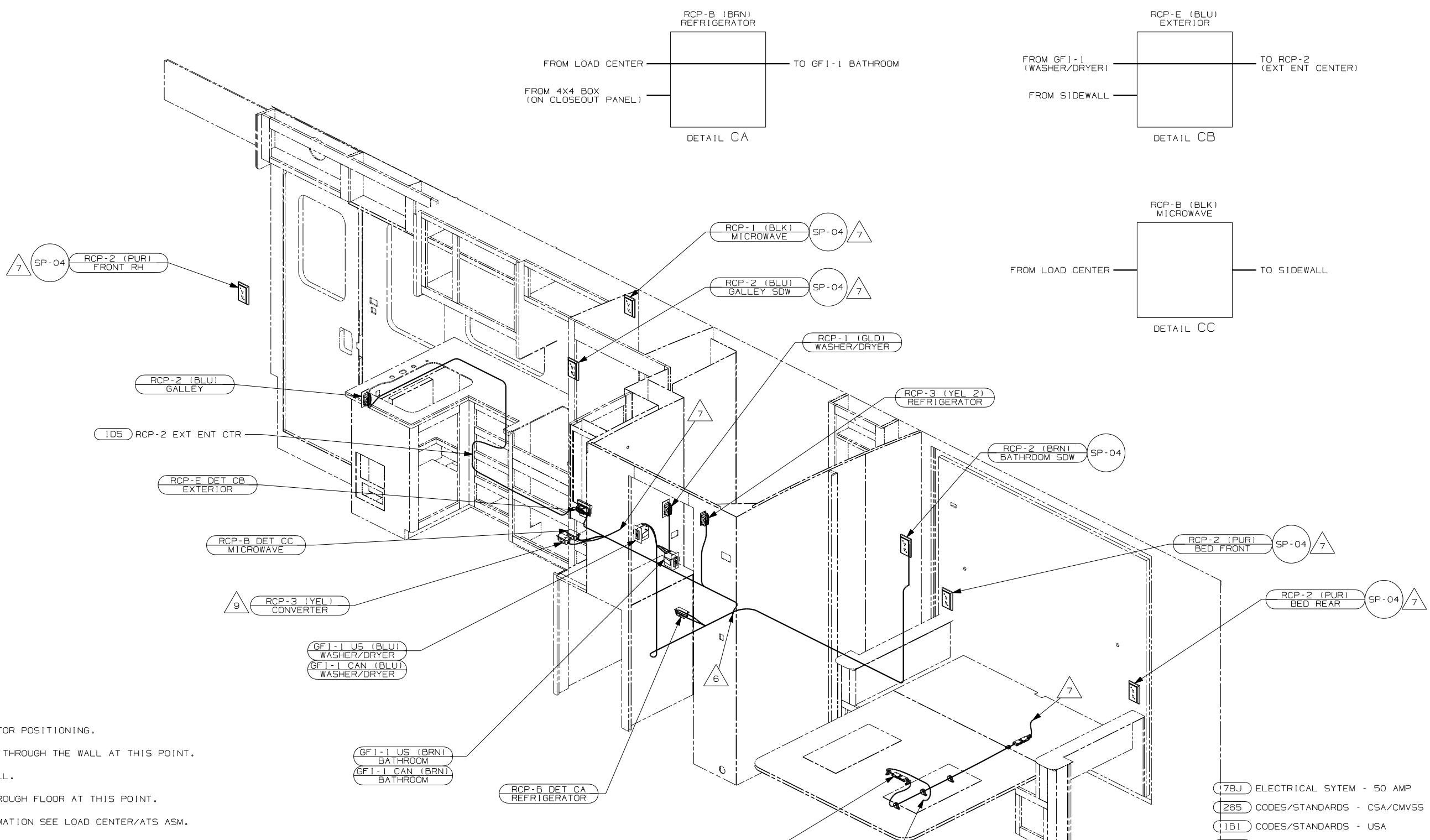
FOR ELECTRICAL
TORQUE
SPECIFICATIONS
SEE DWG NO.
128783-01-000

FOR ELECTRICAL
CALLOUTS
SEE DWG NO.
121339-01-000

- 78J ELECTRICAL SYTEM - 50 AMP
- 480 TV-19" WITH REMOTE
- 265 CODES/STANDARDS - CSA/CMVSS
- 1B1 CODES/STANDARDS - USA
- 12D ELECTRICAL SYSTEM - 30 AMP

12D 1B1 265 78J

FIRST USED	
05 F36M	
DO NOT SCALE DRAWING	
TITLE: WIRING INSTL-BODY,110V	
SHEET 2	PART NO 148480

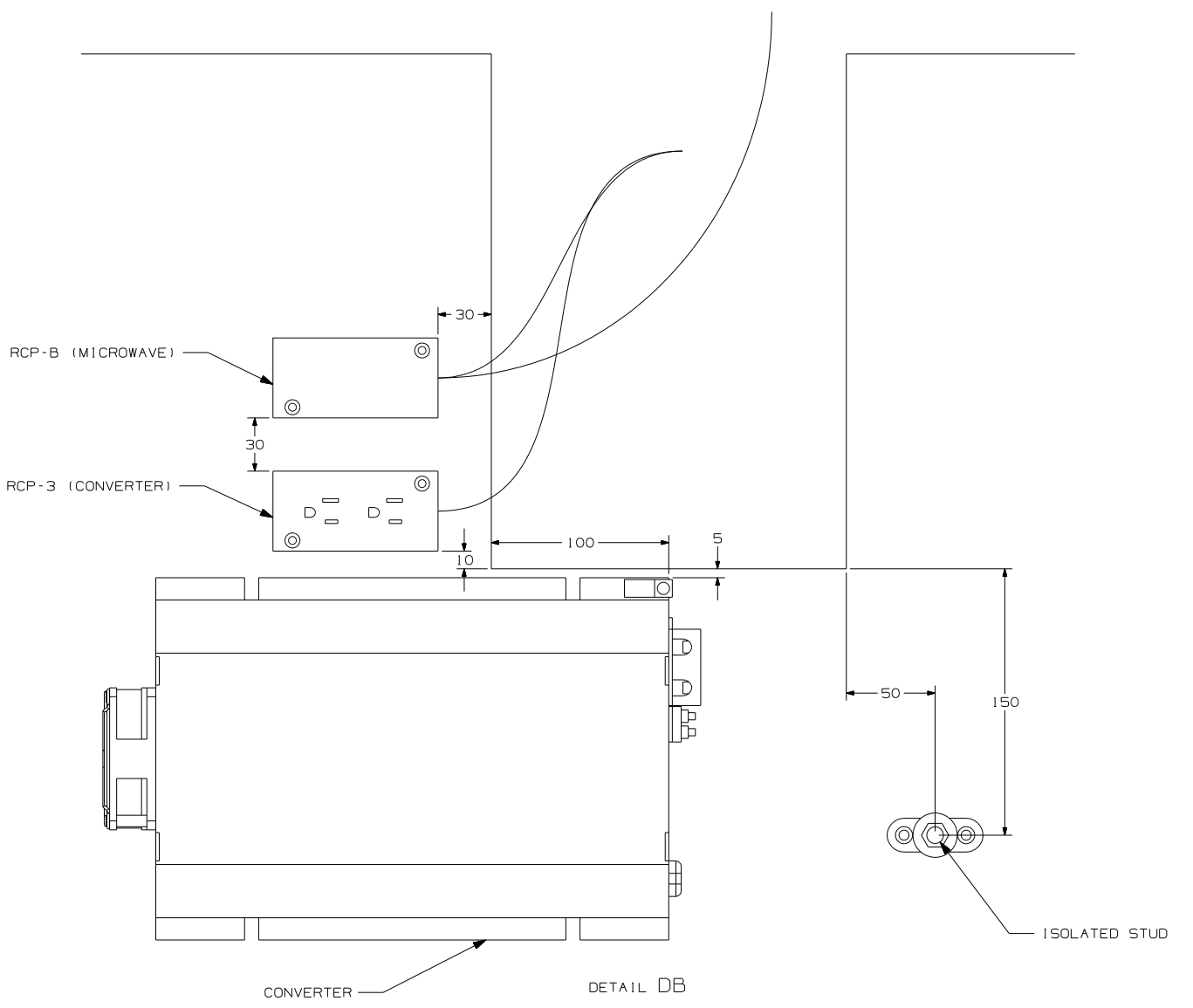
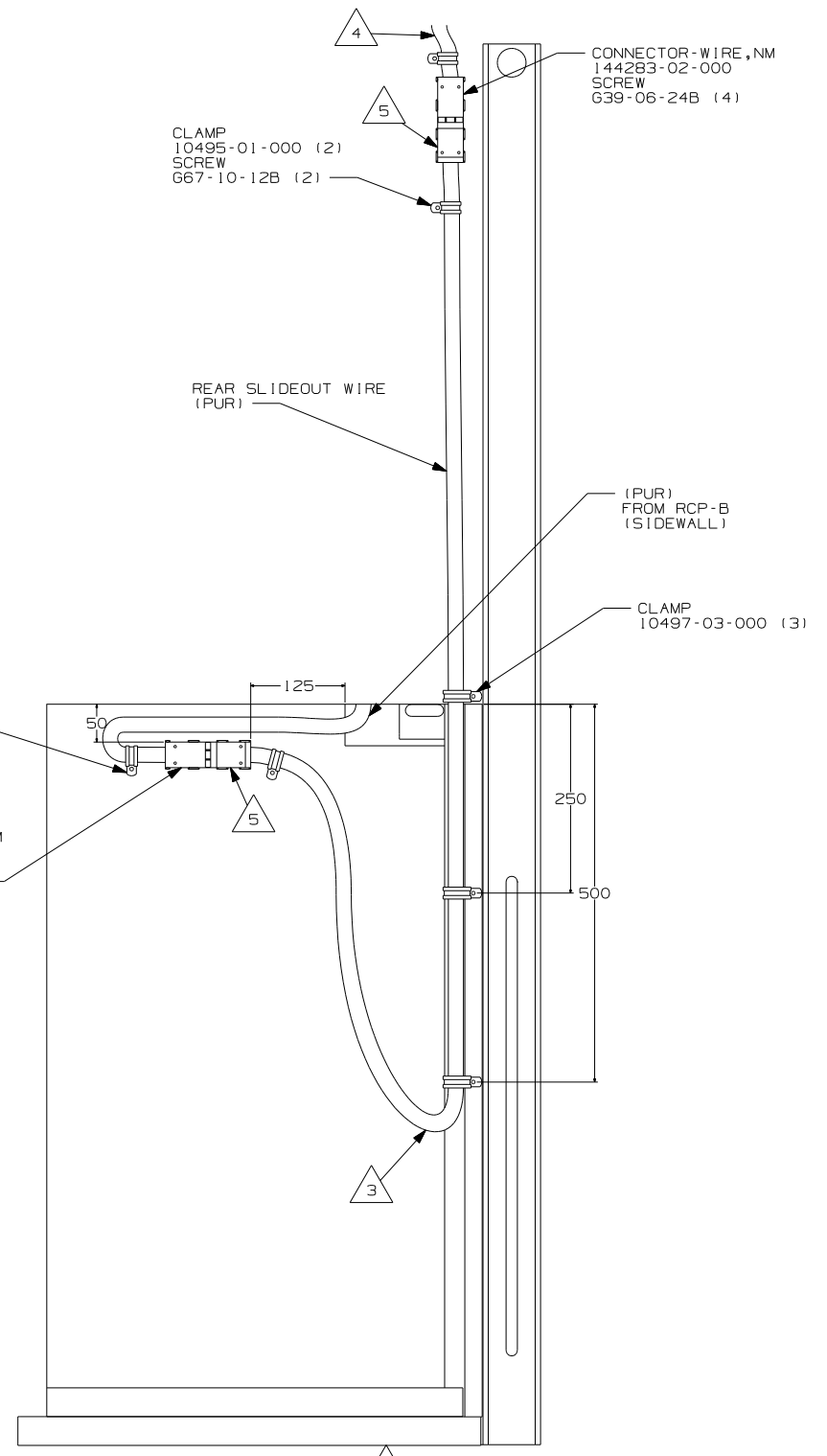


- NOTES:
- 9 SEE DETAIL DB FOR POSITIONING.
 - 8 WIRE IS ROUTED THROUGH THE WALL AT THIS POINT.
 - 7 WIRE IN SIDEWALL.
 - 6 WIRE ROUTED THROUGH FLOOR AT THIS POINT.
 - 5 FOR MORE INFORMATION SEE LOAD CENTER/ATS ASM.
 - 4 FOR MORE INFORMATION SEE WIRING DIAGRAM-BODY,110V.
 - 3 ALL GROUND WIRES TO BE COVERED WITH TUBING 8041-02-000.
 - 2 ALL 110V WIRE TO BE CLAMPED WITH CLAMP 10497-05-000 WITHIN 200MM OF OUTLET BOXES, USE SCREW G67-10-12B.
 - 1 ALL WIRES TO BE SECURED WITH CLAMP 10495-01-000 OR CLIP B0734-01-000 EVERY 600MM. USE SCREW G67-10-12B UNLESS OTHERWISE SPECIFIED.

FOR ELECTRICAL TORQUE SPECIFICATIONS SEE DWG NO. 128783-01-000

X-X FOR ELECTRICAL CALLOUTS SEE DWG NO. 121339-01-000

178J	ELECTRICAL SYTEM - 50 AMP
265	CODES/STANDARDS - CSA/CMVSS
11B1	CODES/STANDARDS - USA
112D	ELECTRICAL SYSTEM - 30 AMP
12D 11B1 265 78J	FIRST USED
05 F36M	
DO NOT SCALE DRAWING	
TITLE: WIRING INSTL-BODY,110V	
SHEET 3	PART NO 148480



DETAIL DA/5

- 5 FOR MORE INFORMATION SEE LOAD CENTER/ATS ASM.
- 4 WIRE IN SIDEWALL.
- 3 MAKE THE LOOP AS SMALL AS POSSIBLE WHEN SLIDEOUT IS COMPLETELY RETRACTED.

- 2. RUN 12V WIRE ALONG WITH REAR SLIDEOUT WIRE.
- 1. WIRE MUST BE ROUTED THROUGH CLAMPS AS SHOWN.

NOTES:

- 78J ELECTRICAL SYTEM - 50 AMP
- 265 CODES/STANDARDS - CSA/CMVSS
- 1B1 CODES/STANDARDS - USA
- 12D ELECTRICAL SYSTEM - 30 AMP

12D 1B1 265 78J

FIRST USED	
05 F36M	
DO NOT SCALE DRAWING	
TITLE:	
WIRING INSTL-BODY, 110V	
SHEET 4	PART NO 148480

FOR ELECTRICAL TORQUE SPECIFICATIONS SEE DWG NO. 128783-01-000

FOR ELECTRICAL CALLOUTS SEE DWG NO. 121339-01-000

