



DANGER

Danger of electrical shock, burns or death. Always remove all power sources before attempting any repair, service or diagnostic work. Power can be present from shore power, generator, inverter or battery. All power sources must be disabled and secured before performing any service.

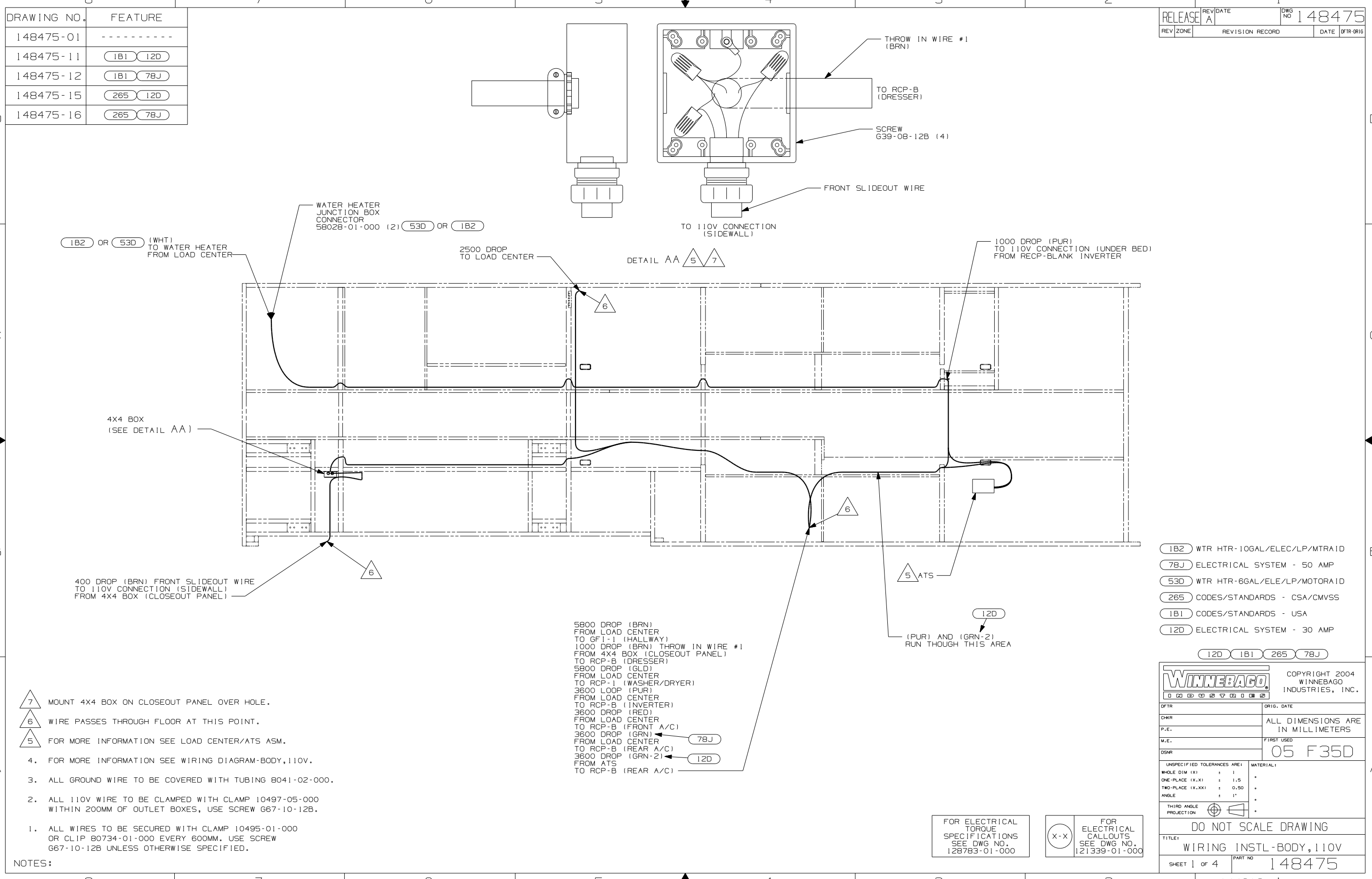


CAUTION

If you lack the skills, tools or equipment to perform diagnostic or repair work leave such work to an authorized Winnebago Industries dealer or other qualified shop.

| DRAWING NO. | FEATURE |
|-------------|-------------|
| 148475-01 | ----- |
| 148475-11 | (1B1) (12D) |
| 148475-12 | (1B1) (78J) |
| 148475-15 | (265) (12D) |
| 148475-16 | (265) (78J) |

| | | |
|----------|-----------------|------------------|
| RELEASE | REV/DATE A | DWG NO 148475 |
| REV ZONE | REVISION RECORD | DATE DFR-016 |



- NOTES:
- ALL WIRES TO BE SECURED WITH CLAMP 10495-01-000 OR CLIP 80734-01-000 EVERY 600MM. USE SCREW G67-10-12B UNLESS OTHERWISE SPECIFIED.
 - ALL 110V WIRE TO BE CLAMPED WITH CLAMP 10497-05-000 WITHIN 200MM OF OUTLET BOXES, USE SCREW G67-10-12B.
 - ALL GROUND WIRE TO BE COVERED WITH TUBING 8041-02-000.
 - FOR MORE INFORMATION SEE WIRING DIAGRAM-BODY, 110V.
 - FOR MORE INFORMATION SEE LOAD CENTER/ATS ASM.
 - WIRE PASSES THROUGH FLOOR AT THIS POINT.
 - MOUNT 4X4 BOX ON CLOSEOUT PANEL OVER HOLE.

5800 DROP (BRN) FROM LOAD CENTER TO GF1-1 (HALLWAY)
 1000 DROP (BRN) THROW IN WIRE #1 FROM 4X4 BOX (CLOSEOUT PANEL) TO RCP-B (DRESSER)
 5800 DROP (GLD) FROM LOAD CENTER TO RCP-1 (WASHER/DRYER)
 3600 LOOP (PUR) FROM LOAD CENTER TO RCP-B (INVERTER)
 3600 DROP (RED) FROM LOAD CENTER TO RCP-B (FRONT A/C)
 3600 DROP (GRN) FROM LOAD CENTER TO RCP-B (REAR A/C)
 3600 DROP (GRN-2) FROM ATS TO RCP-B (REAR A/C)

FOR ELECTRICAL TORQUE SPECIFICATIONS SEE DWG NO. 128783-01-000

FOR ELECTRICAL CALLOUTS SEE DWG NO. 121339-01-000

- (1B2) WTR HTR-10GAL/ELEC/LP/MTR A1D
- (78J) ELECTRICAL SYSTEM - 50 AMP
- (53D) WTR HTR-6GAL/ELE/LP/MOTORA1D
- (265) CODES/STANDARDS - CSA/CMVSS
- (1B1) CODES/STANDARDS - USA
- (12D) ELECTRICAL SYSTEM - 30 AMP

WINNEBAGO INDUSTRIES, INC. COPYRIGHT 2004

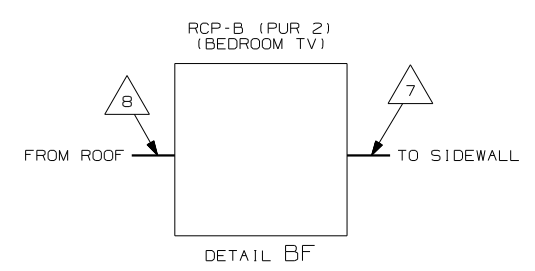
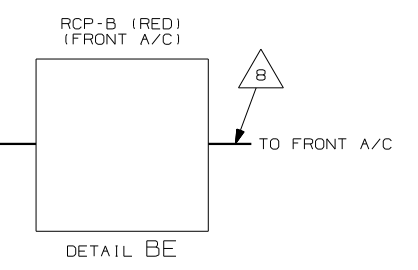
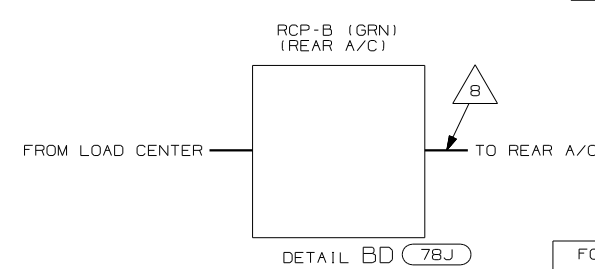
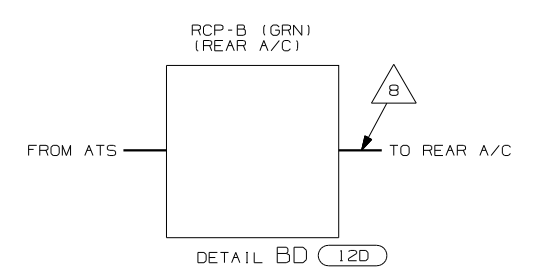
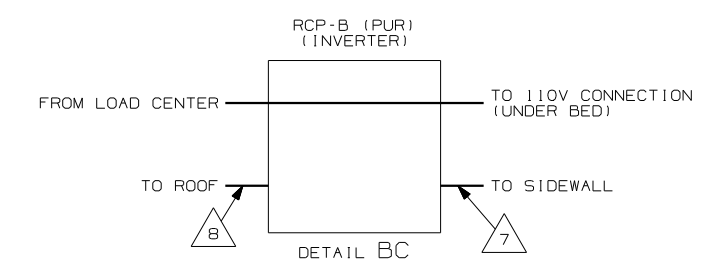
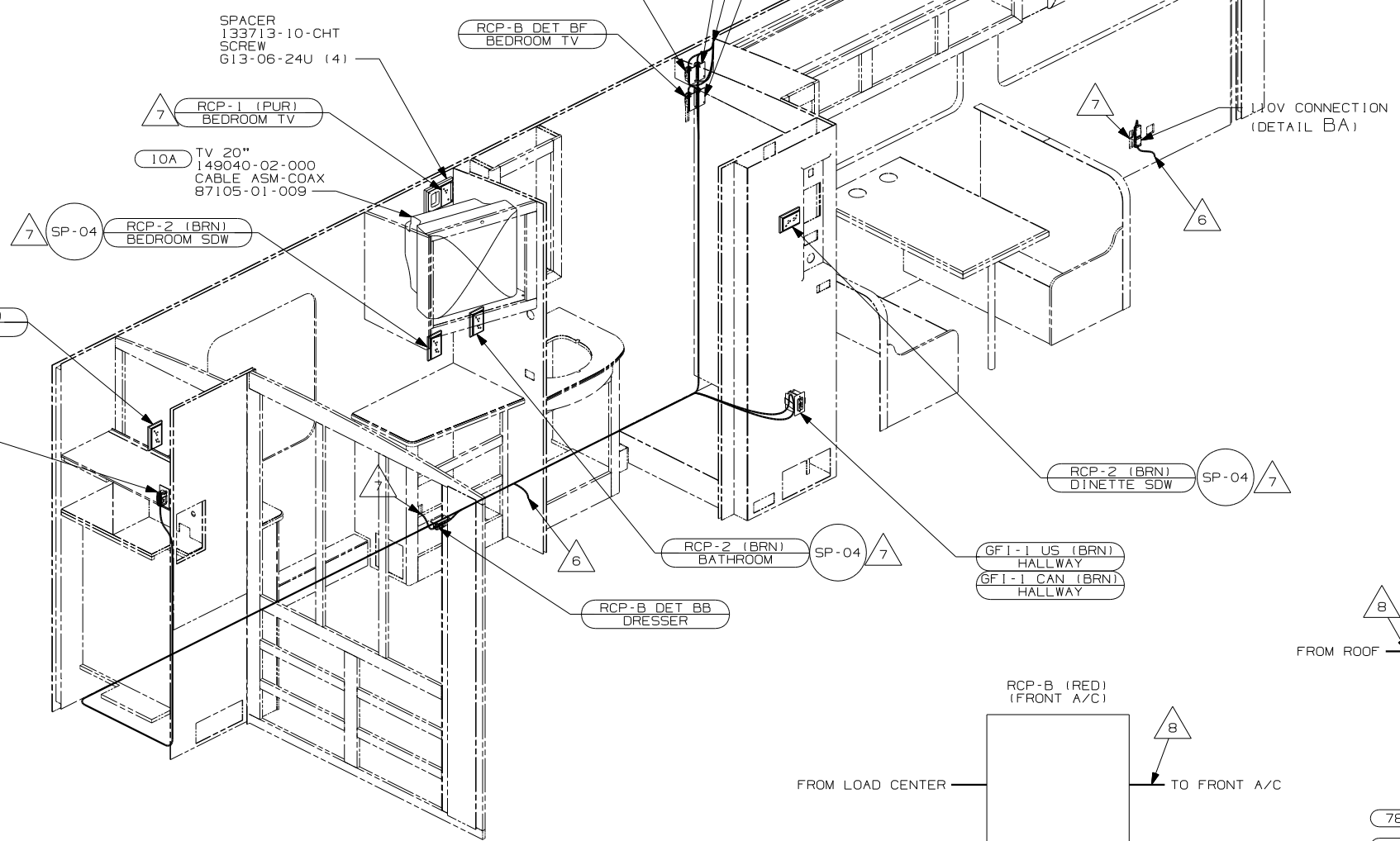
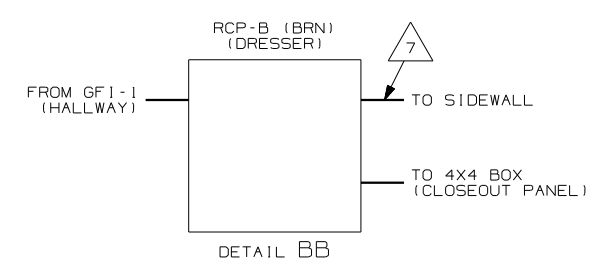
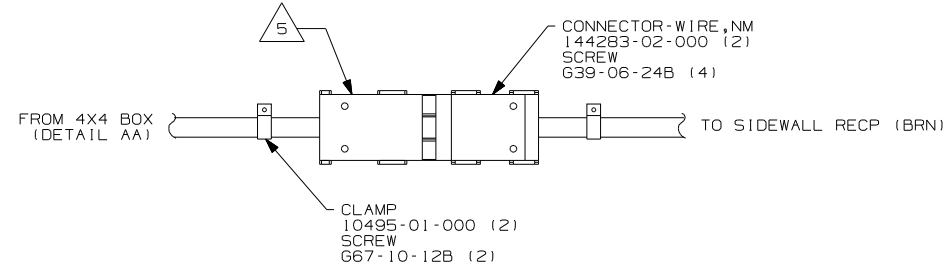
| | |
|-----------------------------|-----------------------------------|
| DFTR | ORIG. DATE |
| CHKR | ALL DIMENSIONS ARE IN MILLIMETERS |
| P.E. | |
| M.E. | FIRST USED |
| DSNR | 05 F35D |
| UNSPECIFIED TOLERANCES ARE: | MATERIAL: |
| HOLE DIM (X) | : 1 |
| ONE-PLACE (X.X) | : 1.5 |
| TWO-PLACE (X.XX) | : 0.50 |
| ANGLE | : 1° |
| THIRD ANGLE PROJECTION | |

DO NOT SCALE DRAWING

TITLE: WIRING INSTL-BODY, 110V

SHEET 1 OF 4 PART NO 148475

REF: 144613 | 5/25/2004



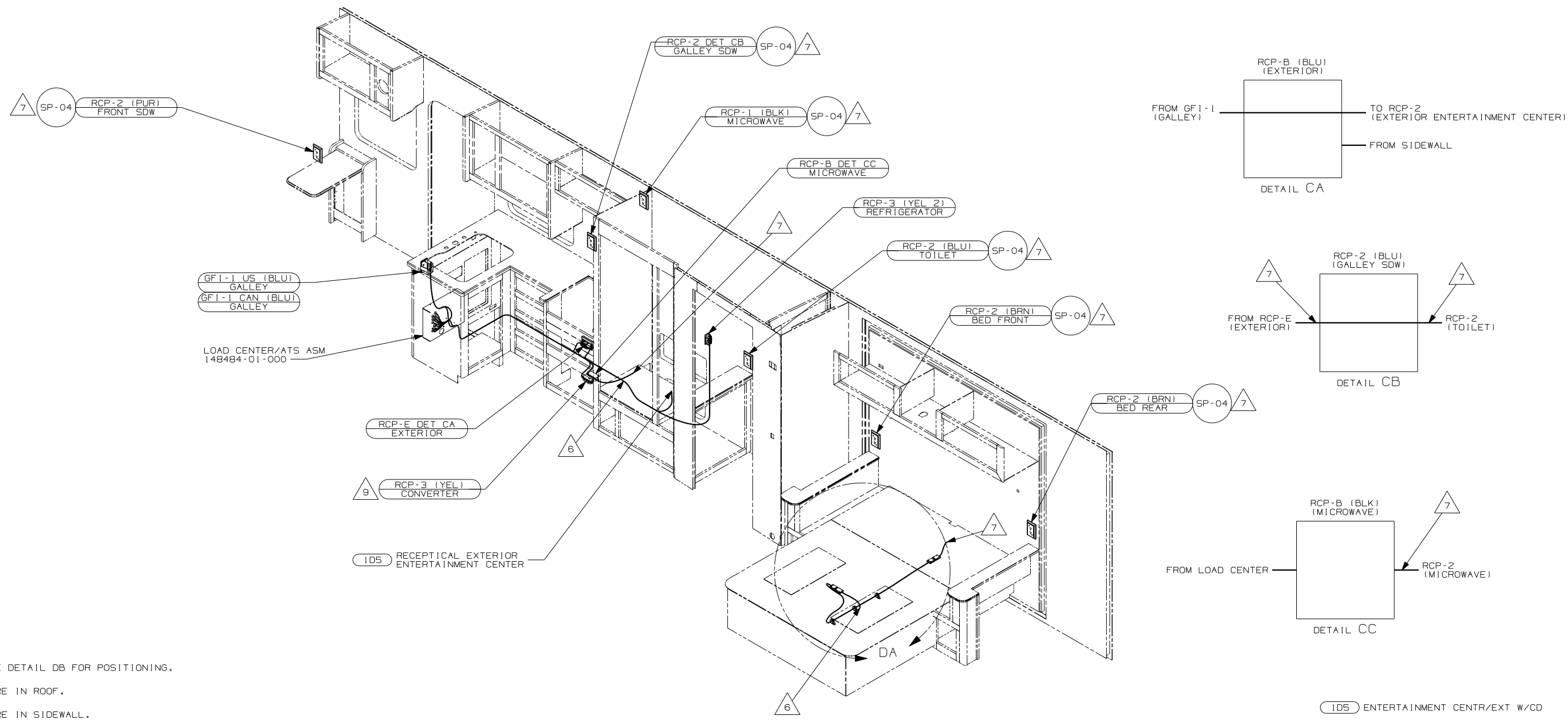
- NOTES:
- 8 WIRE IN ROOF.
 - 7 WIRE IN SIDEWALL.
 - 6 WIRE ROUTED THROUGH FLOOR AT THIS POINT.
 - 5 FOR MORE INFORMATION SEE LOAD CENTER/ATS ASM.
 - 4. FOR MORE INFORMATION SEE WIRING DIAGRAM-BODY, 110V.
 - 3. ALL GROUND WIRES TO BE COVERED WITH TUBING 8041-02-000.
 - 2. ALL 110V WIRE TO BE CLAMPED WITH CLAMP 10497-05-000 WITHIN 200MM OF OUTLET BOXES, USE SCREW G67-10-12B.
 - 1. ALL WIRES TO BE SECURED WITH CLAMP 10495-01-000 OR CLIP 80734-01-000 EVERY 600MM. USE SCREW G67-10-12B UNLESS OTHERWISE SPECIFIED.

FOR ELECTRICAL TORQUE SPECIFICATIONS SEE DWG NO. 128783-01-000

FOR ELECTRICAL CALLOUTS SEE DWG NO. 121339-01-000

- 78J ELECTRICAL SYTEM - 50 AMP
- 53D WTR HTR-6GAL/ELE/LP/MOTORAID
- 10A TV (REAR) - 20" COLOR, STEREO
- 265 CODES/STANDARDS - CSA/CMVSS
- 1B1 CODES/STANDARDS - USA
- 12D ELECTRICAL SYSTEM - 30 AMP

| | |
|--------------------------------|----------------|
| FIRST USED | |
| 05 F35D | |
| DO NOT SCALE DRAWING | |
| TITLE: WIRING INSTL-BODY, 110V | |
| SHEET 2 | PART NO 148475 |



- 9 SEE DETAIL DB FOR POSITIONING.
- 8 WIRE IN ROOF.
- 7 WIRE IN SIDEWALL.
- 6 WIRE ROUTED THROUGH FLOOR AT THIS POINT.
- 5 FOR MORE INFORMATION SEE LOAD CENTER/ATS ASM.
- 4. FOR MORE INFORMATION SEE WIRING DIAGRAM-BODY,110V.
- 3. ALL GROUND WIRES TO BE COVERED WITH TUBING 8041-02-000.
- 2. ALL 110V WIRE TO BE CLAMPED WITH CLAMP 10497-05-000 WITHIN 200MM OF OUTLET BOXES, USE SCREW G67-10-12B.
- 1. ALL WIRES TO BE SECURED WITH CLAMP 10495-01-000 OR CLIP B0734-01-000 EVERY 600MM. USE SCREW G67-10-12B UNLESS OTHERWISE SPECIFIED.

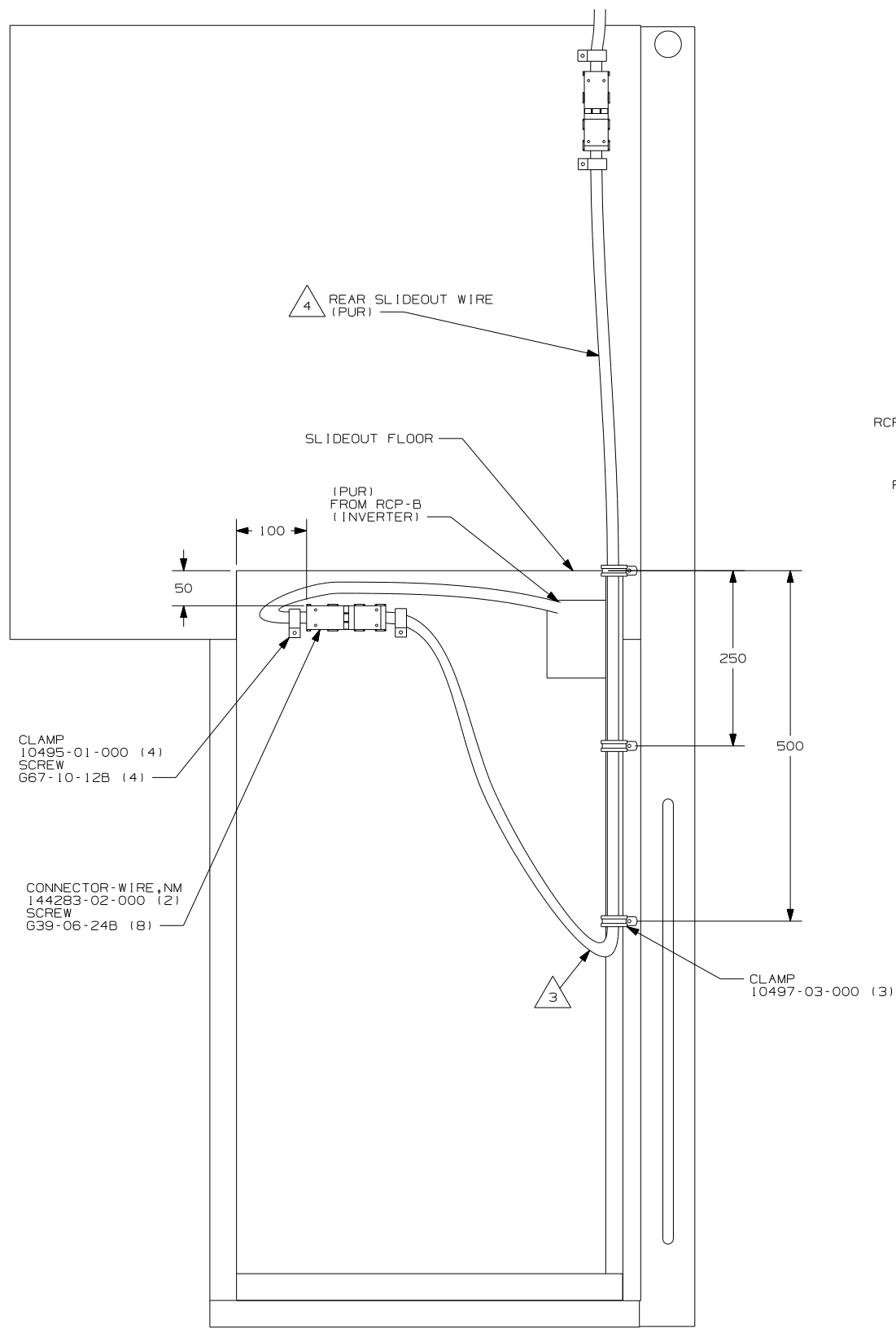
NOTES:

- 1D5 ENTERTAINMENT CENTR/EXT W/CD
- 78J ELECTRICAL SYTEM - 50 AMP
- 265 CODES/STANDARDS - CSA/CMVSS
- 1B1 CODES/STANDARDS - USA
- 12D ELECTRICAL SYSTEM - 30 AMP

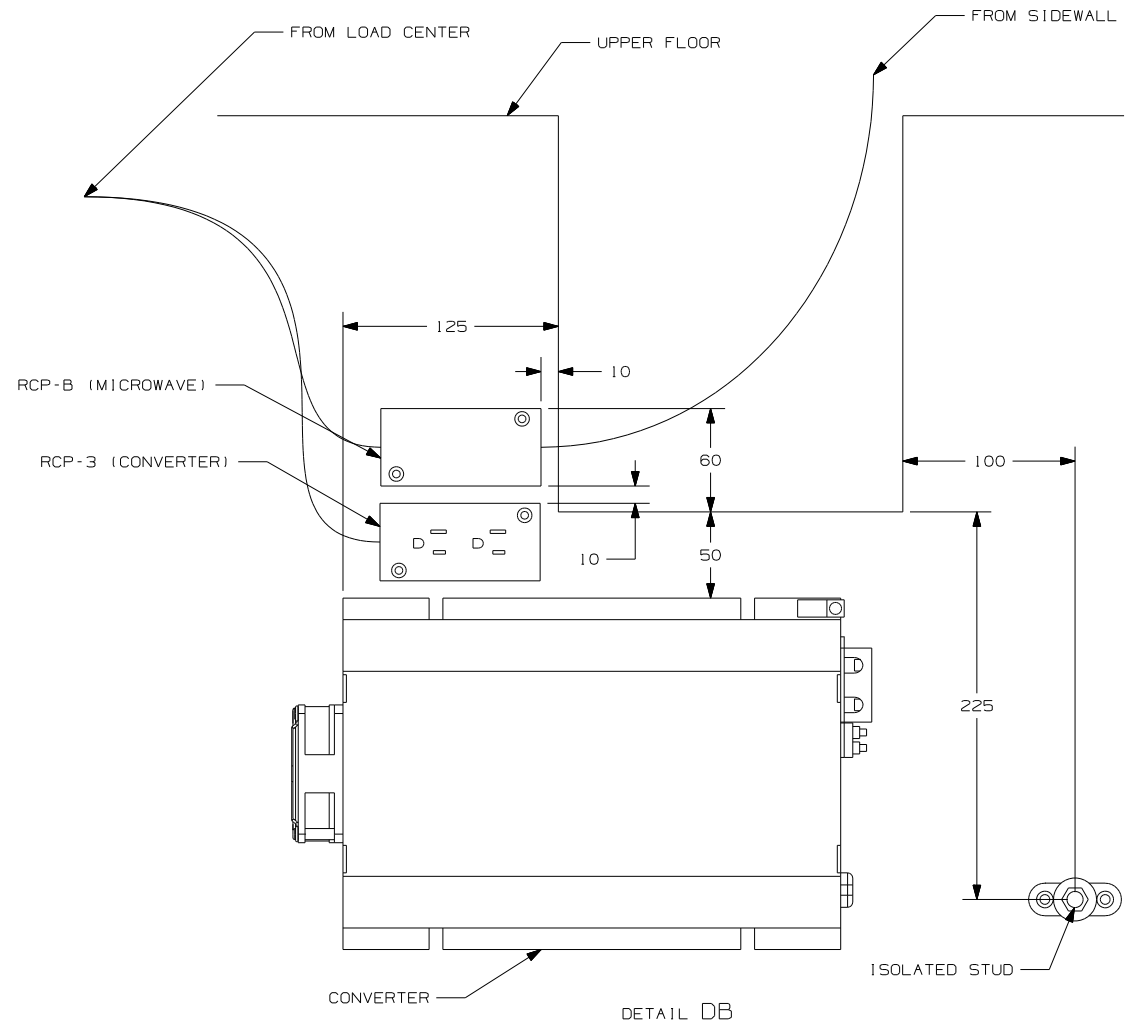
FOR ELECTRICAL TORQUE SPECIFICATIONS SEE DWG NO. 128783-01-000

FOR ELECTRICAL CALLOUTS SEE DWG NO. 121339-01-000

| | |
|-------------------------------|----------------|
| FIRST USED | |
| 05 F35D | |
| DO NOT SCALE DRAWING | |
| TITLE: WIRING INSTL-BODY,110V | |
| SHEET 3 | PART NO 148475 |



DETAIL DA



DETAIL DB

- NOTES:
- 4 FOR MORE INFORMATION SEE LOAD CENTER ASM.
 - 3 MAKE LOOP AS SMALL AS POSSIBLE WHEN SLIDEOUT IS COMPLETELY RETRACTED.
 - 2. RUN 12V WIRE ALONG WITH SLIDEOUT WIRE.
 - 1. WIRE MUST BE ROUTED THROUGH CLAMPS AS SHOWN.

CLAMP
10495-01-000 (4)
SCREW
667-10-12B (4)

CONNECTOR-WIRE,NM
144283-02-000 (2)
SCREW
639-06-24B (8)

CLAMP
10497-03-000 (3)

- 78J ELECTRICAL SYTEM - 50 AMP
- 265 CODES/STANDARDS - CSA/CMVSS
- 1B1 CODES/STANDARDS - USA
- 12D ELECTRICAL SYSTEM - 30 AMP

12D 1B1 265 78J

| | |
|------------|------------------------|
| FIRST USED | 05 F35D |
| TITLE | DO NOT SCALE DRAWING |
| TITLE | WIRING INSTL-BODY,110V |
| SHEET 4 | PART NO 148475 |

FOR ELECTRICAL TORQUE SPECIFICATIONS SEE DWG NO. 128783-01-000

FOR ELECTRICAL CALLOUTS SEE DWG NO. 121339-01-000