



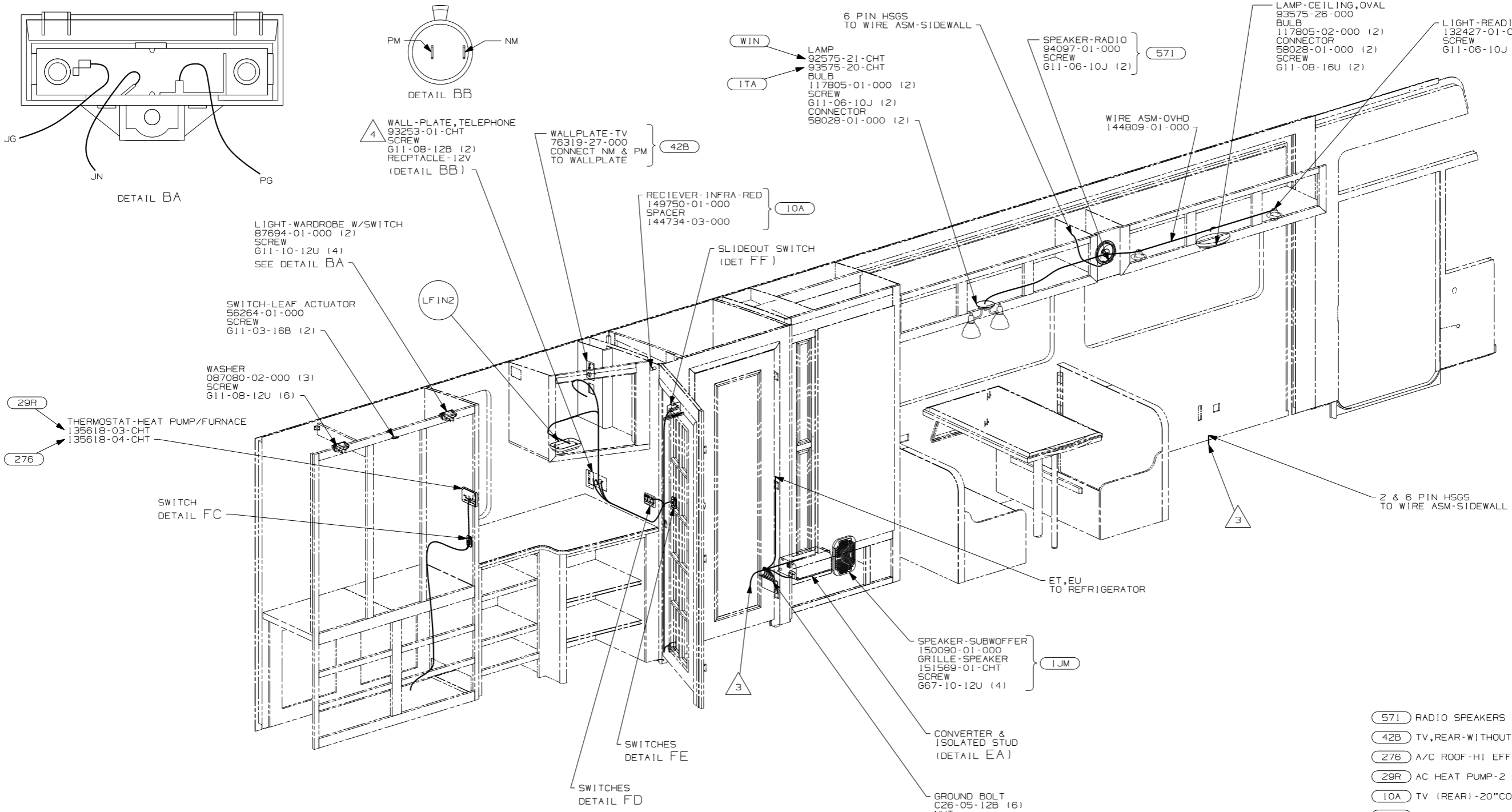
DANGER

Danger of electrical shock, burns or death. Always remove all power sources before attempting any repair, service or diagnostic work. Power can be present from shore power, generator, inverter or battery. All power sources must be disabled and secured before performing any service.



CAUTION

If you lack the skills, tools or equipment to perform diagnostic or repair work leave such work to an authorized Winnebago Industries dealer or other qualified shop.



- △ 4 CONNECT TELEPHONE WIRE TO MATCHING COLORS ON PLATE-WALL, TELEPHONE.
- △ 3 WIRE PASSES THROUGH FLOOR AT THIS POINT.
2. SEE WIRING DIAGRAM-BODY, 12V FOR ADDITIONAL INFORMATION.
1. ALL WIRES TO BE CLAMPED WITH CLAMP 10495-01-000 OR WIRE TIE 8343-02-000 EVERY 600MM, UNLESS OTHERWISE SPECIFIED.

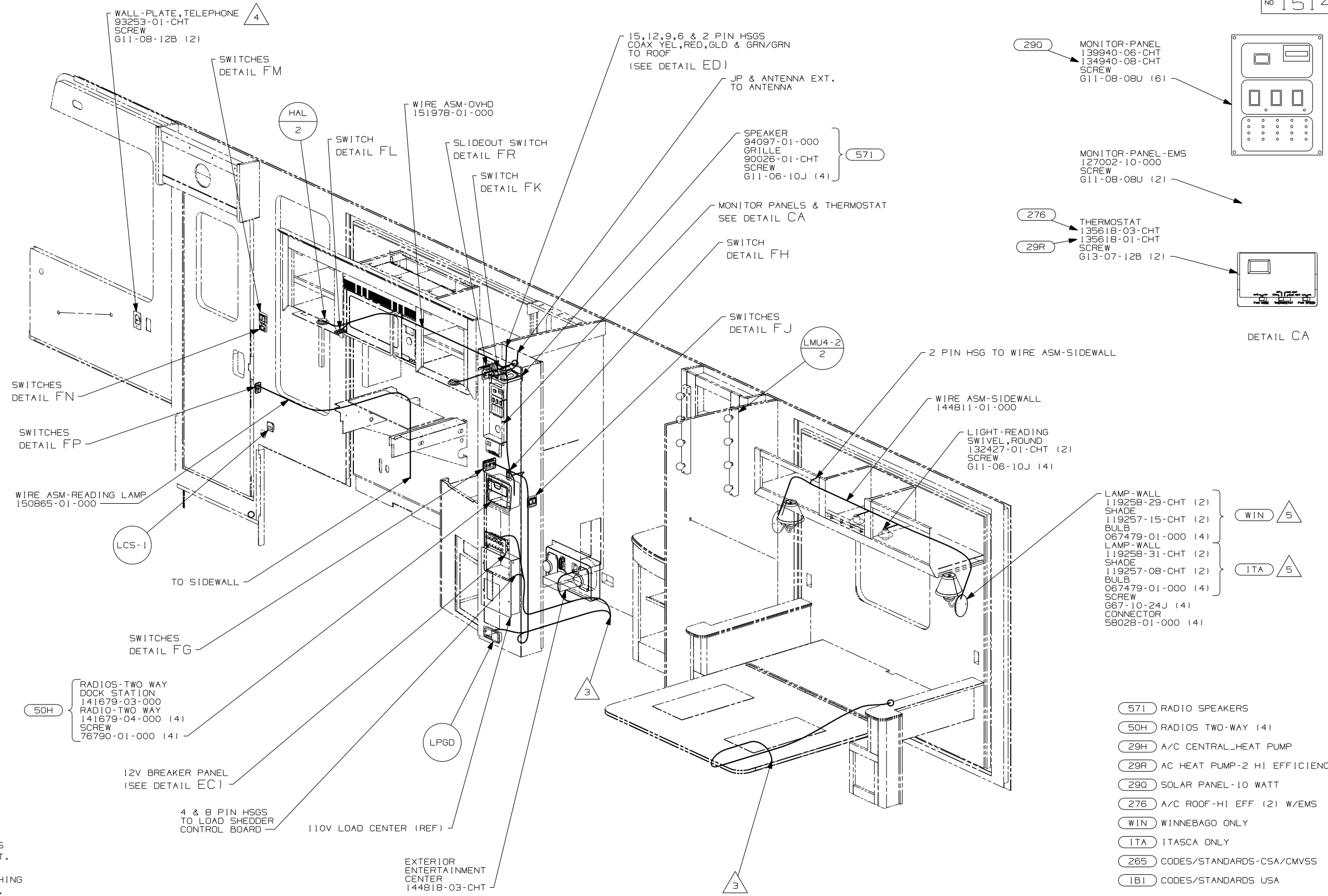
NOTES:

- (571) RADIO SPEAKERS
- (42B) TV, REAR-WITHOUT
- (276) A/C ROOF-HI EFF (2) W/EMS
- (29R) AC HEAT PUMP-2 HI EFFICIENCY
- (10A) TV (REAR)-20"COLOR, STEREO
- (1JM) HOME THEATER SOUND SYSTEM
- (WIN) WINNEBAGO ONLY
- (ITA) ITASCA ONLY
- (265) CODES/STANDARDS-CSA/CMVSS
- (1B1) CODES/STANDARDS USA

FIRST USED	05 F35A
TITLE	DO NOT SCALE DRAWING
TITLE	WIRING INSTL-BODY, 12V
SHEET 2	PART NO 151412

FOR ELECTRICAL TORQUE SPECIFICATIONS SEE DWG NO. 128783-01-000

(X-X) FOR ELECTRICAL CALLOUTS SEE DWG NO. 121339-01-000



- 5 TOP OF LAMP SHADE TO BE NO LESS THAN 150mm BELOW BOTTOM OF CABT.
 - 4 CONNECT TELEPHONE WIRE TO MATCHING COLORS ON PLATE-WALL, TELEPHONE.
 - 3 WIRE PASSES THROUGH FLOOR AT THIS POINT.
2. SEE WIRING DIAGRAM-BODY, 12V FOR ADDITIONAL INFORMATION.
1. ALL WIRES TO BE CLAMPED WITH CLAMP 10495-01-000 OR WIRE TIE 8343-02-000 EVERY 600MM, UNLESS OTHERWISE SPECIFIED.

NOTES:

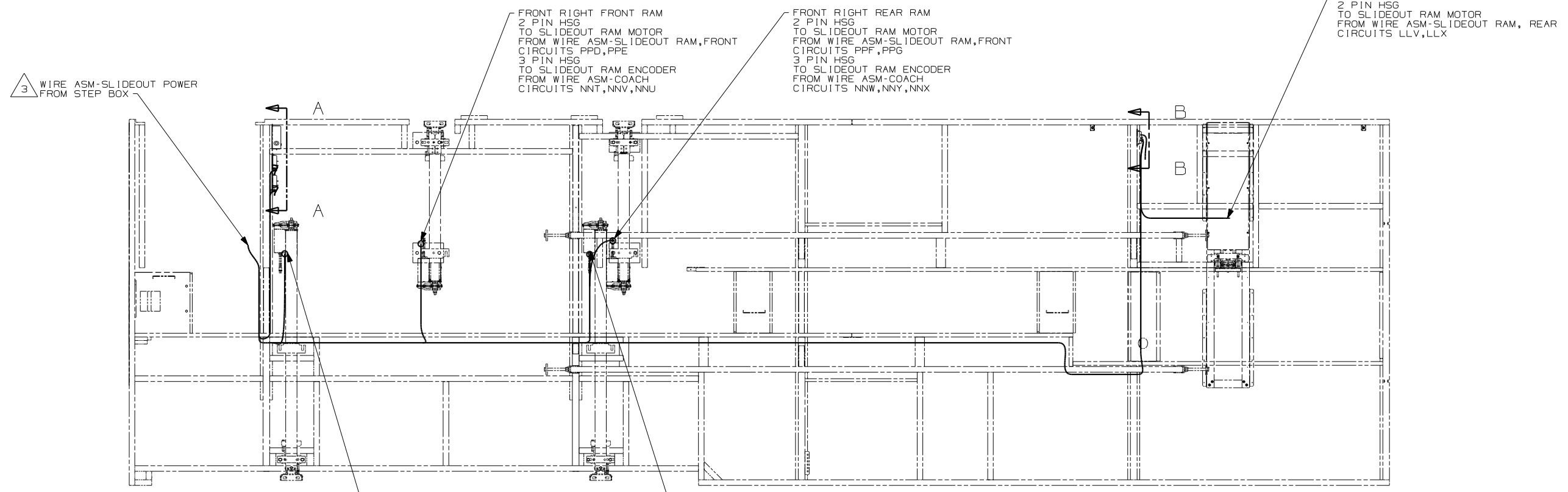
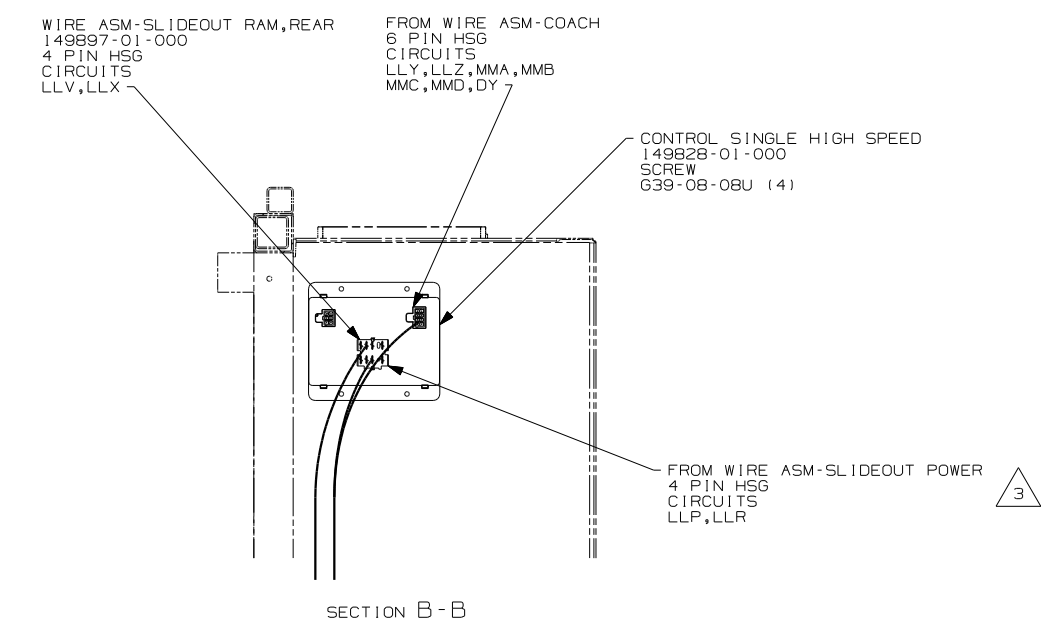
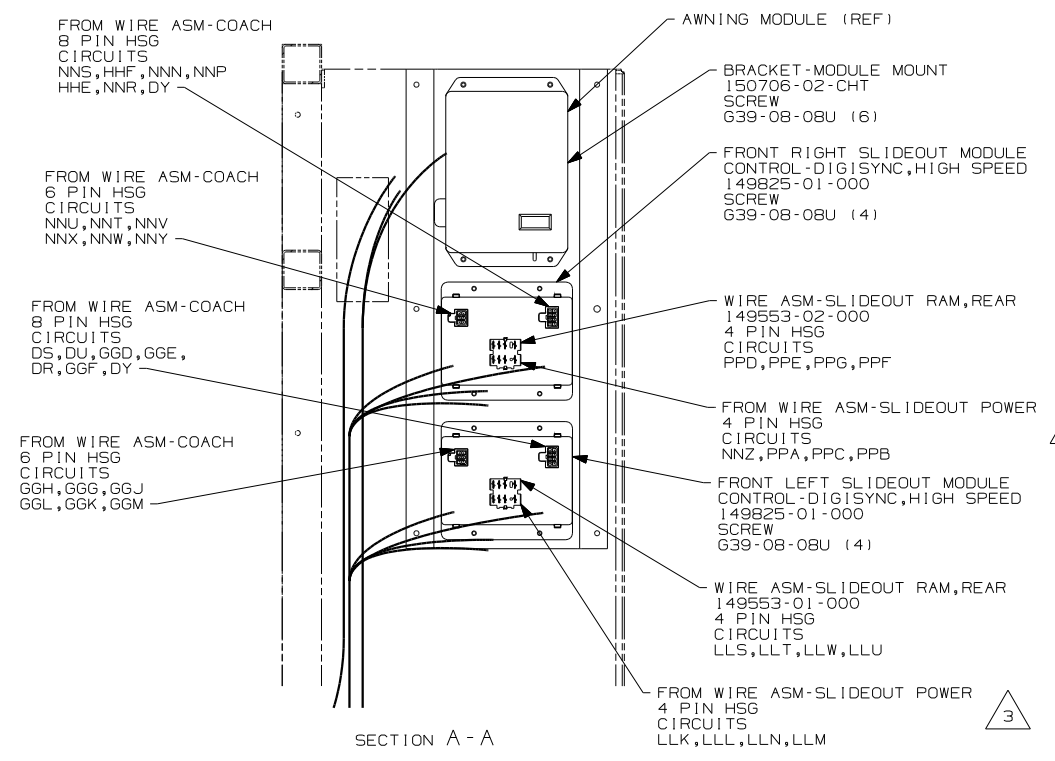
- LAMP-WALL 119258-29-CHT (2)
- SHADE 119257-15-CHT (2)
- BULB 067479-01-000 (4)
- LAMP-WALL 119258-31-CHT (2)
- SHADE 119257-08-CHT (2)
- BULB 067479-01-000 (4)
- SCREW G67-10-24J (4)
- CONNECTOR 58028-01-000 (4)

- 571 RADIO SPEAKERS
- 50H RADIOS TWO-WAY (4)
- 29H A/C CENTRAL-HEAT PUMP
- 29R AC HEAT PUMP-2 HI EFFICIENCY
- 290 SOLAR PANEL-10 WATT
- 276 A/C ROOF-HI EFF (2) W/EMS
- WIN WINNEBAGO ONLY
- ITA ITASCA ONLY
- 265 CODES/STANDARDS-CSA/CMVSS
- 1B1 CODES/STANDARDS USA

FOR ELECTRICAL TORQUE SPECIFICATIONS SEE DWG NO. 128783-01-000

FOR ELECTRICAL CALLOUTS SEE DWG NO. 121339-01-000

FIRST USED	
05 F35A	
DO NOT SCALE DRAWING	
TITLE: WIRING INSTL-BODY, 12V	
SHEET 3	PART NO 151412



- 3 SEE WIRE ASM-CHASSIS ELECTRICAL BOX FOR ADDITIONAL INFORMATION.
2. SEE WIRING DIAGRAM-BODY,12V FOR ADDITIONAL INFORMATION.
1. ALL WIRES TO BE CLAMPED WITH CLAMP 10495-01-000 OR WIRE TIE 8343-02-000 EVERY 600MM, UNLESS OTHERWISE SPECIFIED.

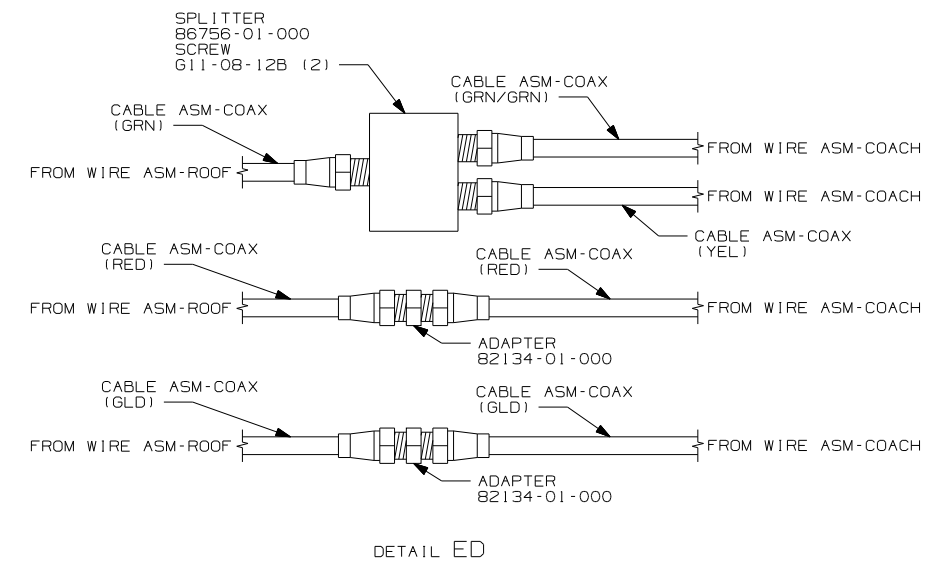
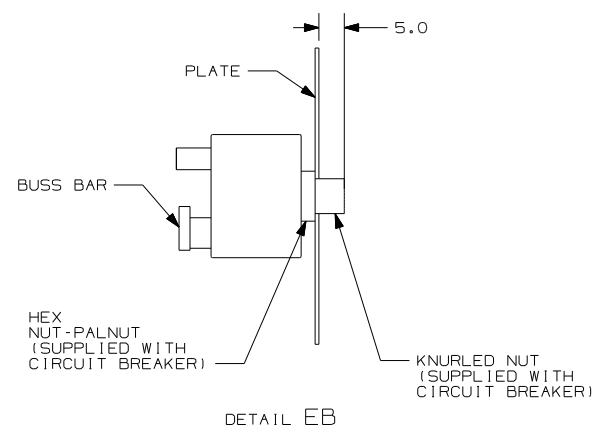
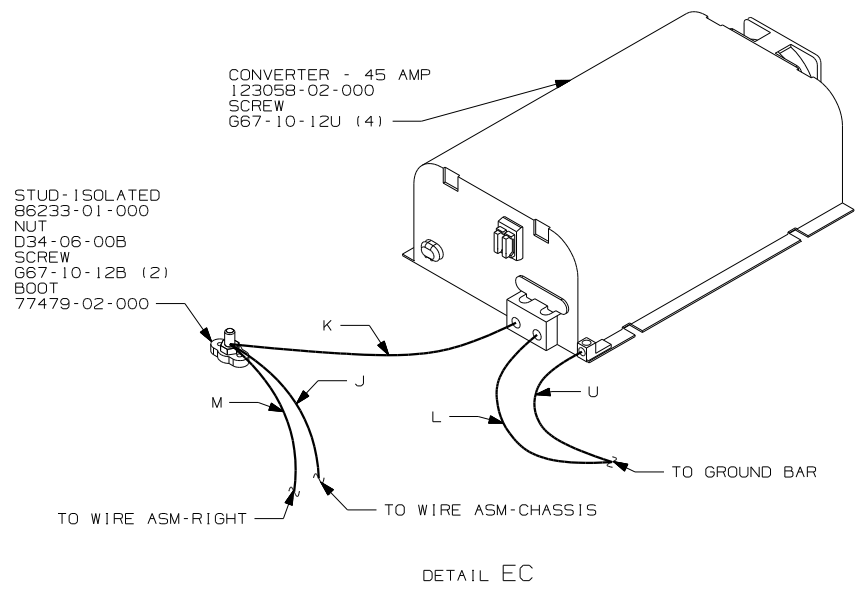
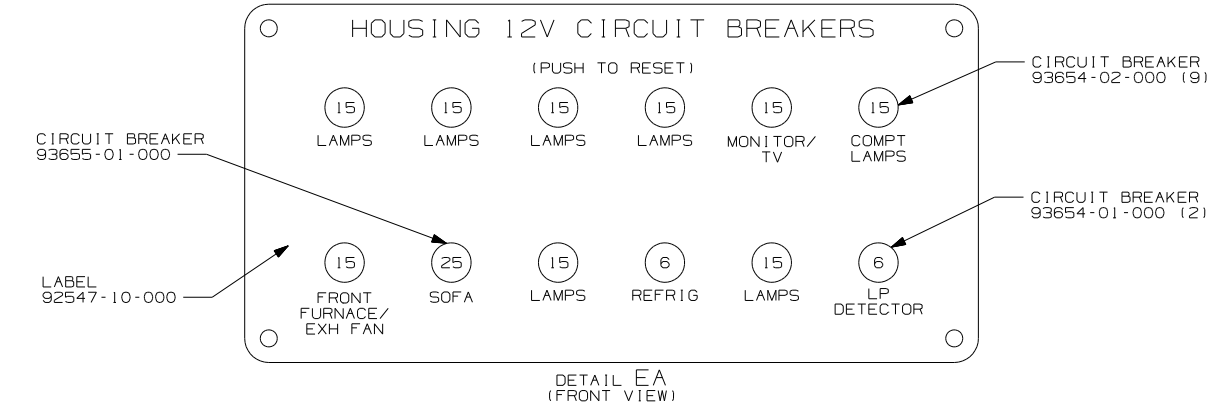
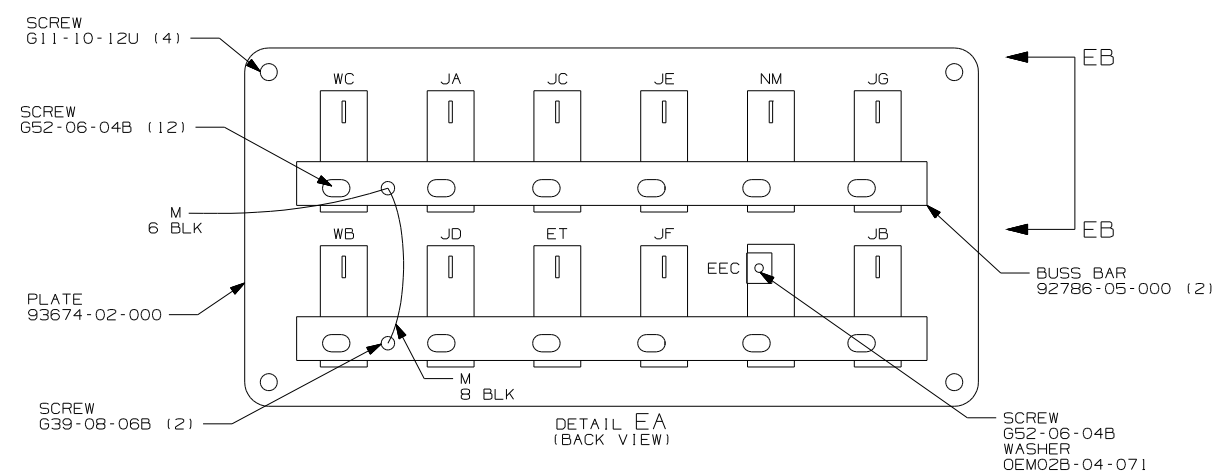
NOTES:

- FRONT LEFT FRONT RAM
2 PIN HSG
TO SLIDEOUT RAM MOTOR
FROM WIRE ASM-SLIDEOUT RAM,FRONT
CIRCUITS LLS,LLT
3 PIN HSG
TO SLIDEOUT RAM ENCODER
FROM WIRE ASM-COACH
CIRCUITS GGG,GGJ,GGH
- FRONT LEFT REAR RAM
2 PIN HSG
TO SLIDEOUT RAM MOTOR
FROM WIRE ASM-SLIDEOUT RAM,FRONT
CIRCUITS LLU,LLW
3 PIN HSG
TO SLIDEOUT RAM ENCODER
FROM WIRE ASM-COACH
CIRCUITS GGG,GGM,GGJ

FOR ELECTRICAL TORQUE SPECIFICATIONS SEE DWG NO. 128783-01-000

X-X FOR ELECTRICAL CALLOUTS SEE DWG NO. 121339-01-000

181	265
FIRST USED	
05 F35A	
DO NOT SCALE DRAWING	
TITLE: WIRING INSTL-BODY,12V	
SHEET 4	PART NO 151412



3. WIRE PASSES THROUGH FLOOR AT THIS POINT.
2. SEE WIRING DIAGRAM-BODY,12V FOR ADDITIONAL INFORMATION.
1. ALL WIRES TO BE CLAMPED WITH CLAMP 10495-01-000 OR WIRE TIE 8343-02-000 EVERY 600MM, UNLESS OTHERWISE SPECIFIED.

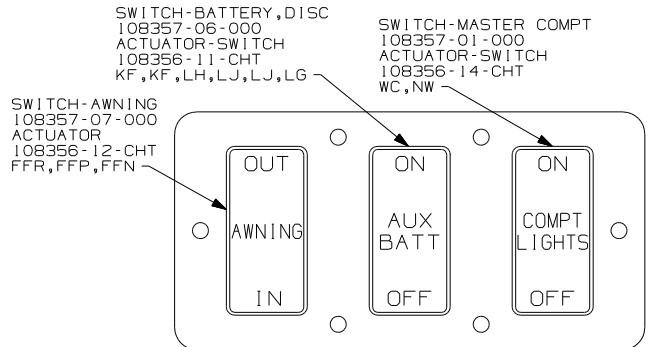
NOTES:

FOR ELECTRICAL TORQUE SPECIFICATIONS SEE DWG NO. 128783-01-000

FOR ELECTRICAL CALLOUTS SEE DWG NO. 121339-01-000

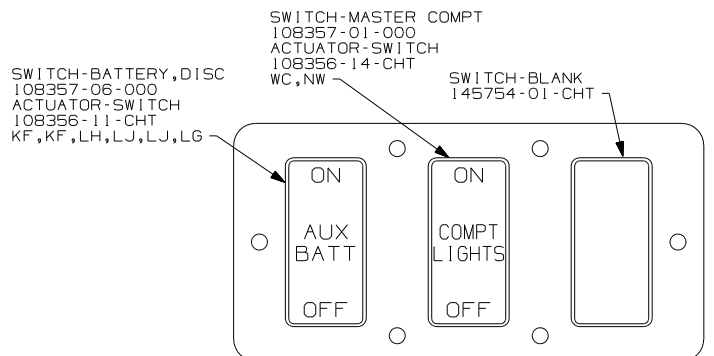
265	CODES/STANDARDS-CSA/CMVSS
1B1	CODES/STANDARDS-USA
1B1	265

FIRST USED	05 F35A
TITLE	DO NOT SCALE DRAWING
	WIRING INSTL-BODY,12V
SHEET 5	PART NO 151412



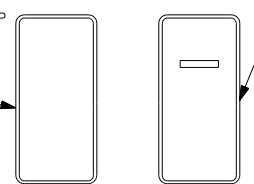
DETAIL FA (52N)

PLATE-SWITCH
98351-23-CHT
SCREW
G11-06-10U (6)



DETAIL FA 2

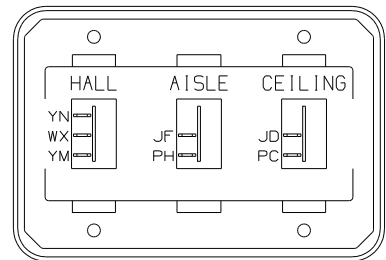
PLATE-SWITCH
98351-23-CHT
SCREW
G11-06-10U (6)



DETAIL FB

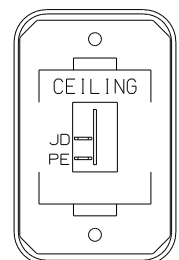
SWITCH-SERVICE LAMP
108357-01-000
ACTUATOR
108356-02-CHT
WC,WA

SWITCH-PUMP
108357-15-000
ACTUATOR
108356-04-CHT
JY,AG,JA,AF,JS



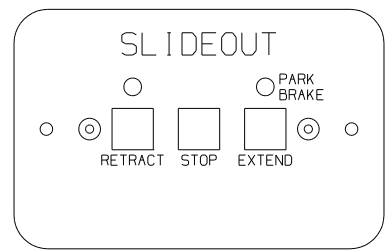
DETAIL FD

SWITCH-ROCKER
135740-01-CHT (2)
135740-02-CHT
SWITCH-BASE
135741-03-CHT
SWITCH-BEZEL
135742-25-CHT
SCREW
G11-08-08U (4)



DETAIL FE

SWITCH-ROCKER
135740-01-CHT
SWITCH-BASE
135741-01-CHT
SWITCH-BEZEL
135742-07-CHT
SCREW
G11-08-08U (2)

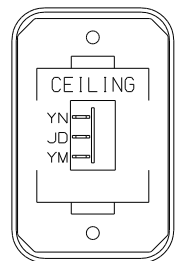


DETAIL FF

SWITCH ASM-SLIDEOUT
138173-04-000
CIRCUITS
LLY,LLZ,MMA
MMB,MMC,MMD

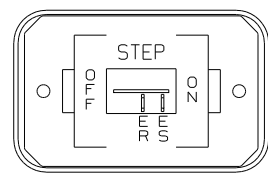
WARNING UNDERSTAND OPERATOR'S MANUAL BEFORE USING
KEEP PEOPLE AND OBSTRUCTIONS CLEAR OF
SLIDEOUT ROOM WHEN OPERATING TO AVOID
INJURY AND/OR PROPERTY DAMAGE

LABEL-WARNING
116549-01-000



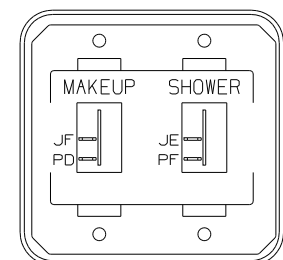
DETAIL FH

SWITCH-ROCKER
135740-02-CHT
SWITCH-BASE
135741-01-CHT
SWITCH-BEZEL
135742-07-CHT
SCREW
G11-08-08U (2)



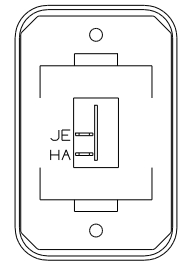
DETAIL FN

SWITCH-ROCKER
135740-01-CHT
SWITCH-BASE
135741-01-CHT
SWITCH-BEZEL
135742-11-CHT
SCREW
G11-08-08U (2)



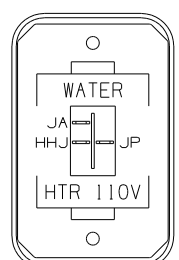
DETAIL FJ

SWITCH-ROCKER
135740-01-CHT (2)
SWITCH-BASE
135741-02-CHT
SWITCH-BEZEL
135742-20-CHT
SCREW
G11-08-08U (4)



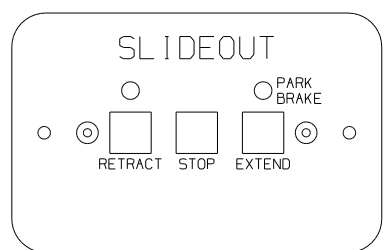
DETAIL FP

SWITCH-ROCKER
135740-01-CHT
SWITCH-BASE
135741-01-CHT
SWITCH-BEZEL
135742-01-CHT
SCREW
G11-08-08U (2)



DETAIL FK (53D) OR (1B2)

SWITCH-ROCKER
135740-06-CHT
SWITCH-BASE
135741-01-CHT
SWITCH-BEZEL
135742-35-CHT
SCREW
G11-08-08U (2)

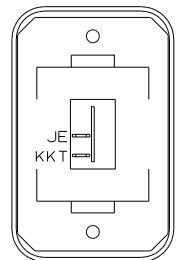


DETAIL FR

SWITCH ASM-SLIDEOUT
138173-04-000
CIRCUITS
NNS,HHF,NNN
NNP,HHE,NNR

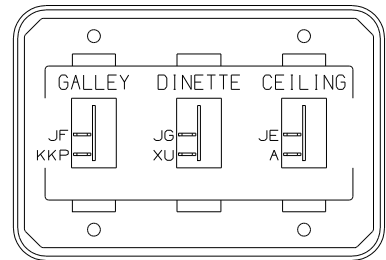
WARNING UNDERSTAND OPERATOR'S MANUAL BEFORE USING
KEEP PEOPLE AND OBSTRUCTIONS CLEAR OF
SLIDEOUT ROOM WHEN OPERATING TO AVOID
INJURY AND/OR PROPERTY DAMAGE

LABEL-WARNING
116549-01-000



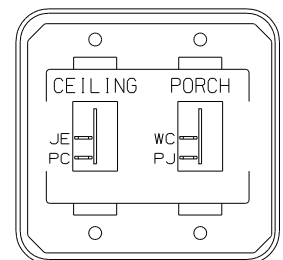
DETAIL FL

SWITCH-ROCKER
135740-01-CHT
SWITCH-BASE
135741-01-CHT
SWITCH-BEZEL
135742-01-CHT
SCREW
G11-08-08U (2)



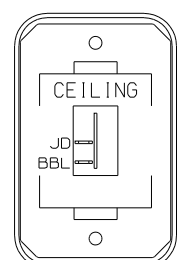
DETAIL FG

SWITCH-ROCKER
135740-01-CHT (3)
SWITCH-BASE
135741-03-CHT
SWITCH-BEZEL
135742-27-CHT
SCREW
G11-08-08U (4)



DETAIL FM

SWITCH-ROCKER
135740-01-CHT (2)
SWITCH-BASE
135741-02-CHT
SWITCH-BEZEL
135742-19-CHT
SCREW
G11-08-08U (4)



DETAIL FC

SWITCH-ROCKER
135740-01-CHT
SWITCH-BASE
135741-01-CHT
SWITCH-BEZEL
135742-07-CHT
SCREW
G11-08-08U (2)

WITHOUT (52N).

1. SWITCHES ARE TO BE INSTALLED AS SHOWN ON THIS DRAWING.

NOTES:

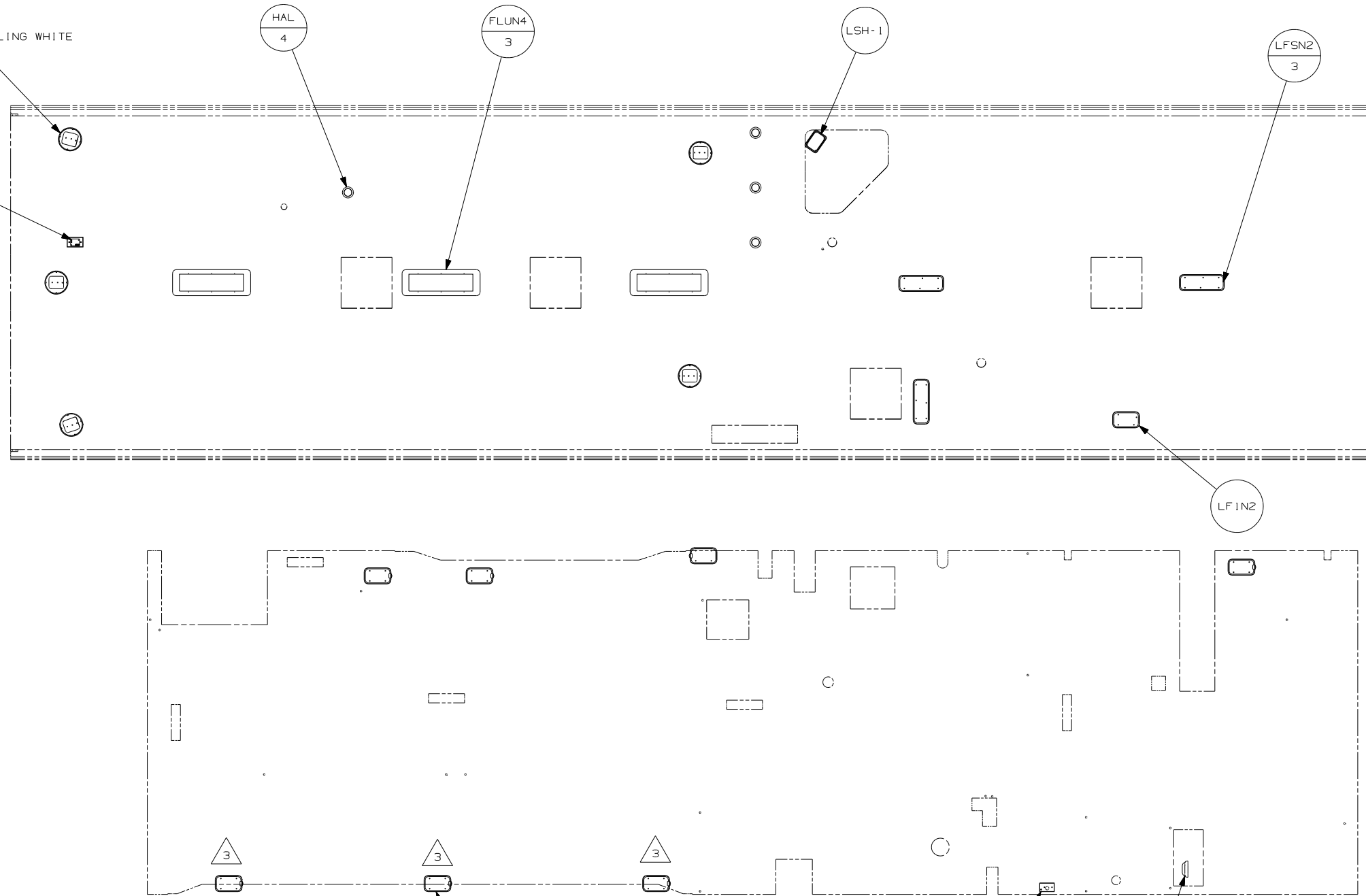
FOR ELECTRICAL
TORQUE
SPECIFICATIONS
SEE DWG NO.
128783-01-000



FOR ELECTRICAL
CALLOUTS
SEE DWG NO.
121339-01-000

- (53D) WTR HTR-6GAL/ELE/LP/MOTORAID
- (52N) AWNING - PATIO, ELECTRIC
- (265) CODES/STANDARDS-CSA/CMVSS
- (1B2) WTR HTR-10GAL/ELEC/LP/MTRAID
- (1B1) CODES/STANDARDS USA
- (1B1) (265)

FIRST USED	05 F35A
TITLE	DO NOT SCALE DRAWING
TITLE	WIRING INSTL-BODY,12V
SHEET 6	PART NO 151412



1JM (SPEAKER-CUBE, CEILING WHITE)
151314-01-CHT (5)
SCREW
G68-06-12U (20)

SATELLITE
ELEVATION
SENSOR
DETAIL HD

HAL
4

FLUN4
3

LSH-1

LFSN2
3

LFI 1N2

LFI 1-2
8

WASHER-PLASTIC
87080-02-CHT (8)
SCREW
G11-08-08B (16)

LAMP
86280-01-000
SCREW
G67-10-12U (4)
CONNECTOR
58028-01-000 (2)

- NOTES:
- 3 LAMP LOCATED IN SLIDEOUT COMPARTMENT.
 - 2 LAMP LOCATED IN POWER CORD COMPARTMENT.
 - 1 LAMP LOCATED IN SERVICE COMPARTMENT.

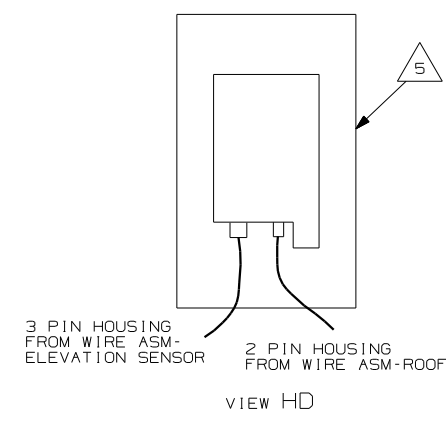
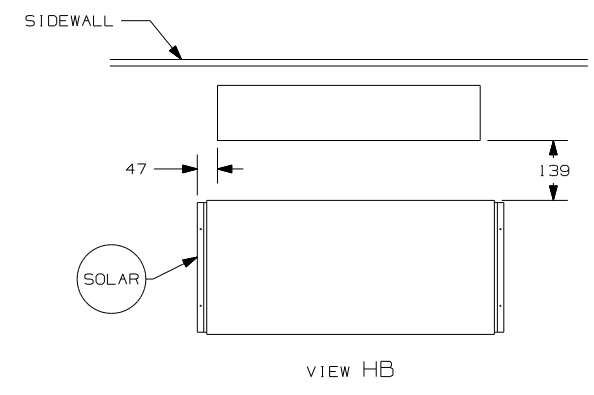
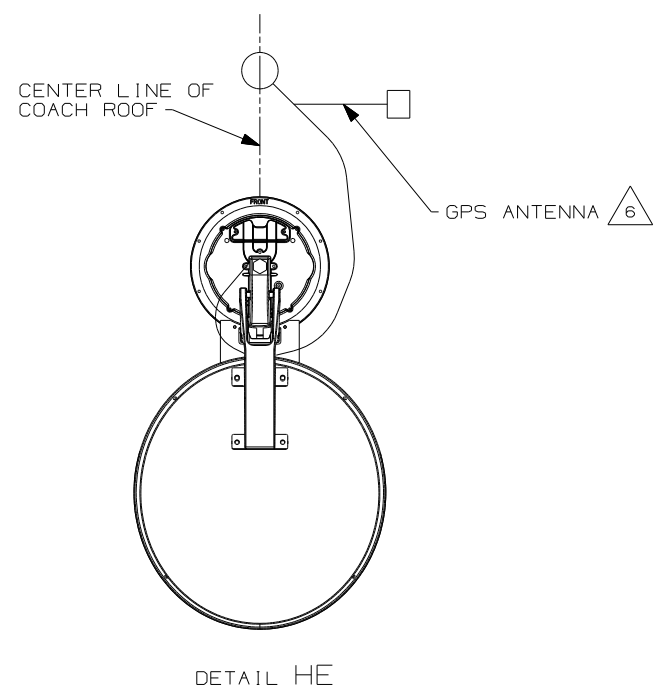
- 48V FEATURE NOTE
- 48M FEATURE NOTE
- 265 CODES/STANDARDS-CSA/CMVSS
- 1JM HOME THEATER SOUND SYSTEM
- 1B1 CODES/STANDARDS USA
- WIN WINNEBAGO ONLY
- ITA ITASCA ONLY

1B1 265 48M 48V

FOR ELECTRICAL
TORQUE
SPECIFICATIONS
SEE DWG NO.
128783-01-000

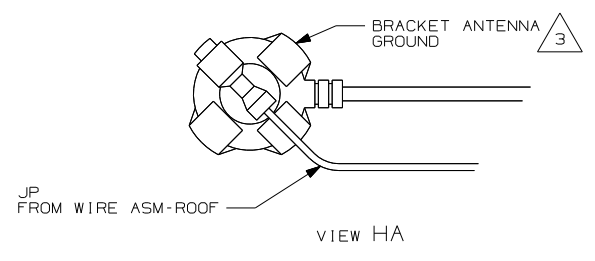
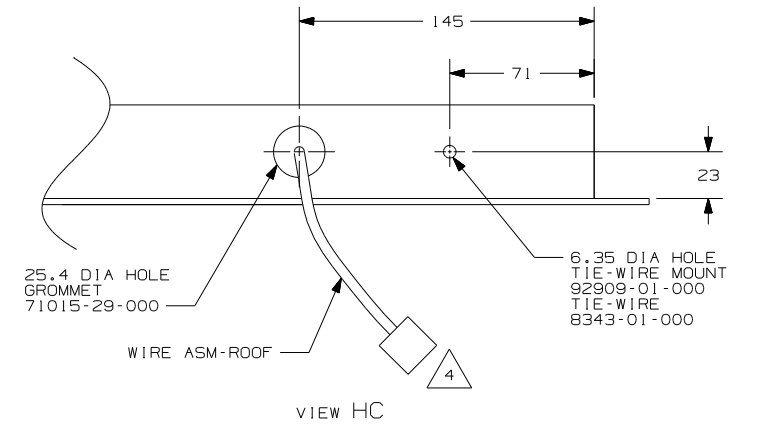
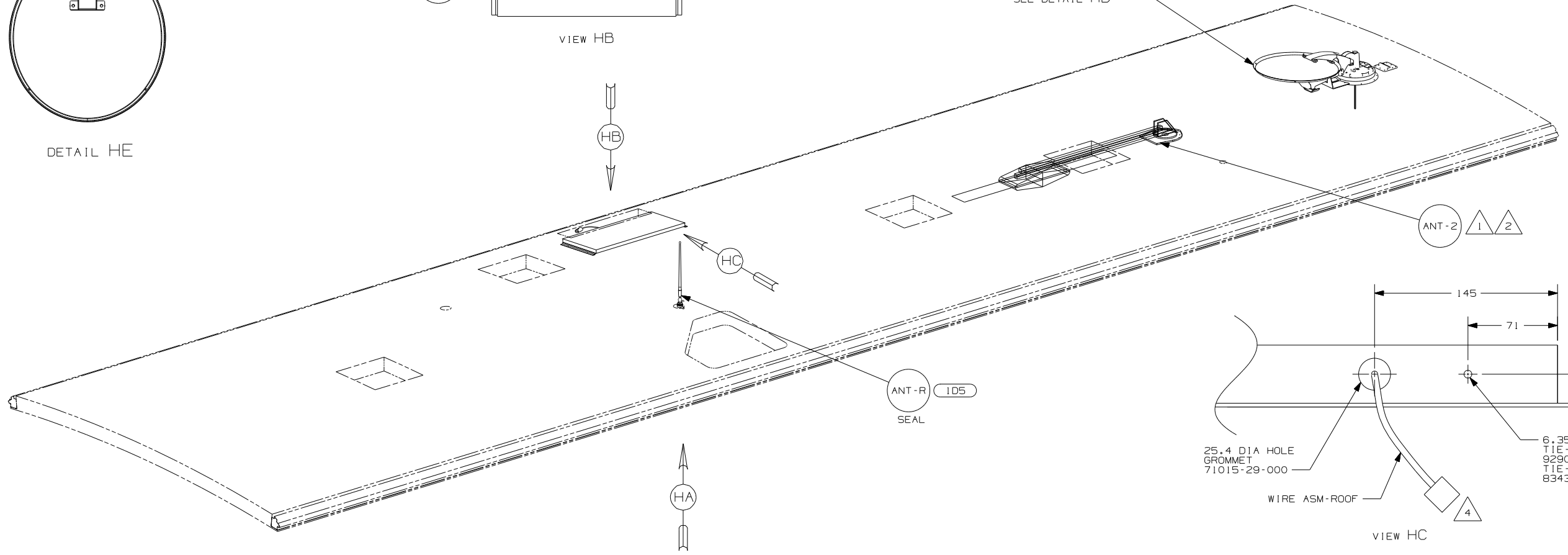
FOR ELECTRICAL
CALLOUTS
SEE DWG NO.
121339-01-000

FIRST USED	05 F35A
DO NOT SCALE DRAWING	
TITLE:	WIRING INSTL-BODY, 12V
SHEET 7	PART NO 151412



78K DA-1
SEE DETAIL HE

480 DM-1
SEE DETAIL HD



- NOTES:
- 6 MOUNT GPS ANTENNA TO THE RIGHT OF THE SATELLITE AS SHOWN. SECURE CABLE WITH ROOF SEALANT.
 - 5 SENSOR SUPPLIED WITH SATELLITE ASSEMBLY.
 - 4 FASTEN TO VENT.
 - 3 WRAP BRACKET LEGS AROUND ANTENNA BASE.
 - 2 ADD RUBBER BUMBERS TO ROOF UNDER EACH END OF ANTENNA TO PREVENT CONTACT WITH ROOF.
 - 1 SEE DWG 76319-01-000 FOR INSTALLATION OF TV ANTENNA.

- 78K SATELLITE DISH-AUTOMATIC
- 480 SATELLITE DISH & ELEV.SENSOR
- 25E STEREO SYSTEM W/CD REAR
- 265 CODES/STANDARDS-CSA/CMVSS
- ID5 ENTERTAINMENT CENTR/EXT W/CD
- 1B1 CODES/STANDARDS USA

FIRST USED	
05 F35A	
DO NOT SCALE DRAWING	
TITLE: WIRING INSTL-BODY, 12V	
SHEET 8	PART NO 151412

FOR ELECTRICAL TORQUE SPECIFICATIONS SEE DWG NO. 128783-01-000

FOR ELECTRICAL CALLOUTS SEE DWG NO. 121339-01-000