



**DANGER**

**Danger of electrical shock, burns or death.** Always remove all power sources before attempting any repair, service or diagnostic work. Power can be present from shore power, generator, inverter or battery. All power sources must be disabled and secured before performing any service.

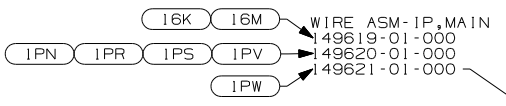
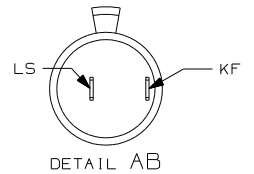
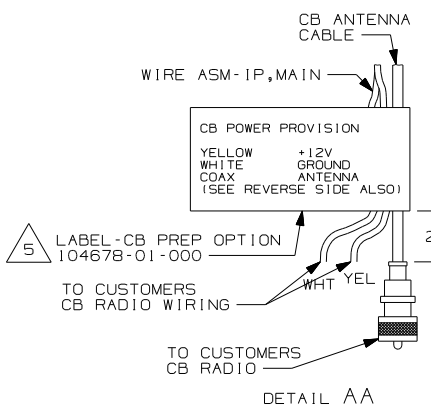
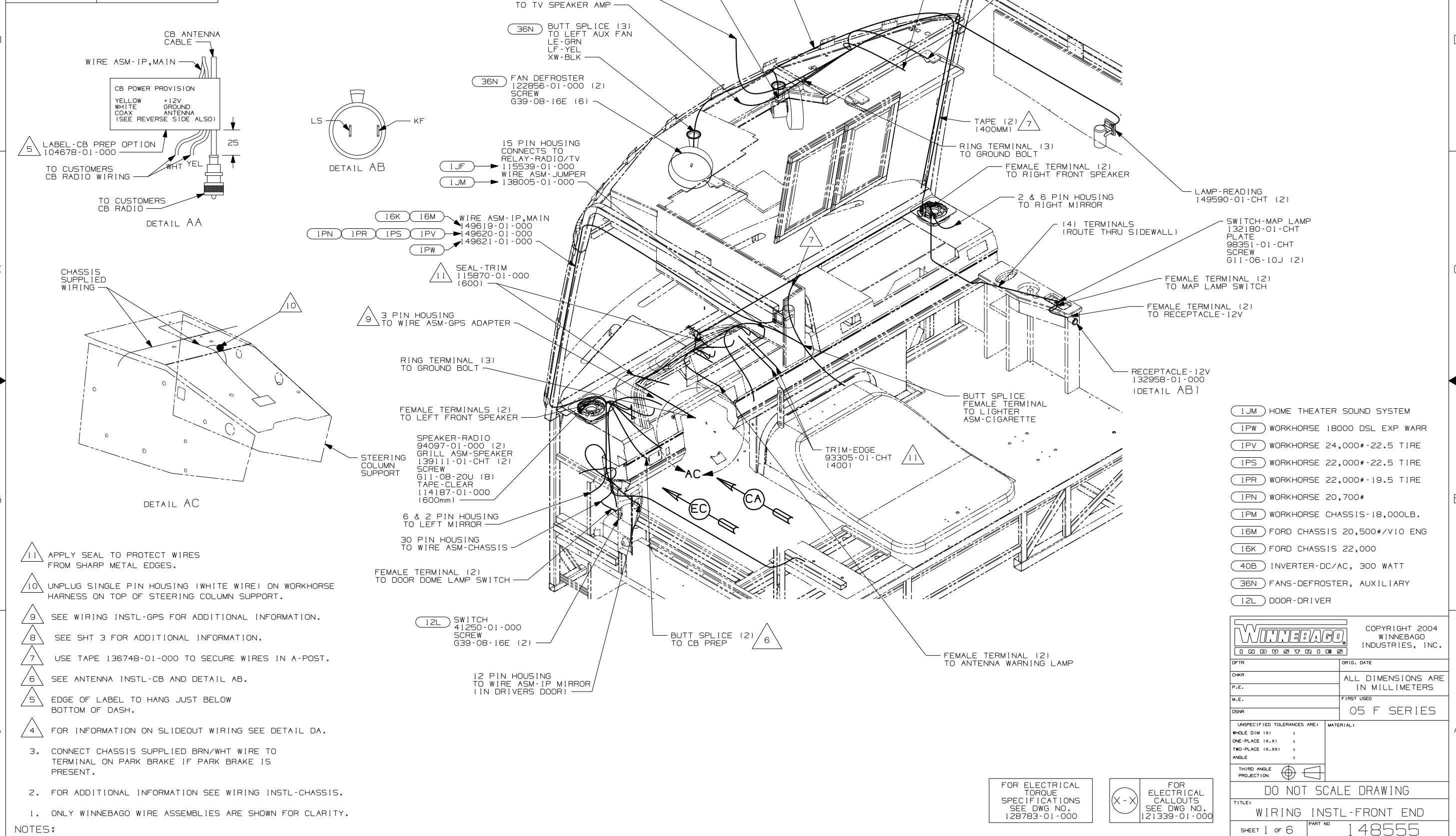


**CAUTION**

If you lack the skills, tools or equipment to perform diagnostic or repair work leave such work to an authorized Winnebago Industries dealer or other qualified shop.

DRAWING NO.	SLIDE CONTROLS
148555-01	KWIKEE
148555-02	HWH

RELEASE	REV/DATE	DWG NO
	A	148555
REV ZONE	REVISION RECORD	DATE
		DFTR-016



- 11. APPLY SEAL TO PROTECT WIRES FROM SHARP METAL EDGES.
- 10. UNPLUG SINGLE PIN HOUSING (WHITE WIRE) ON WORKHORSE HARNESS ON TOP OF STEERING COLUMN SUPPORT.
- 9. SEE WIRING INSTL-GPS FOR ADDITIONAL INFORMATION.
- 8. SEE SHT 3 FOR ADDITIONAL INFORMATION.
- 7. USE TAPE 136748-01-000 TO SECURE WIRES IN A-POST.
- 6. SEE ANTENNA INSTL-CB AND DETAIL AB.
- 5. EDGE OF LABEL TO HANG JUST BELOW BOTTOM OF DASH.
- 4. FOR INFORMATION ON SLIDEOUT WIRING SEE DETAIL DA.

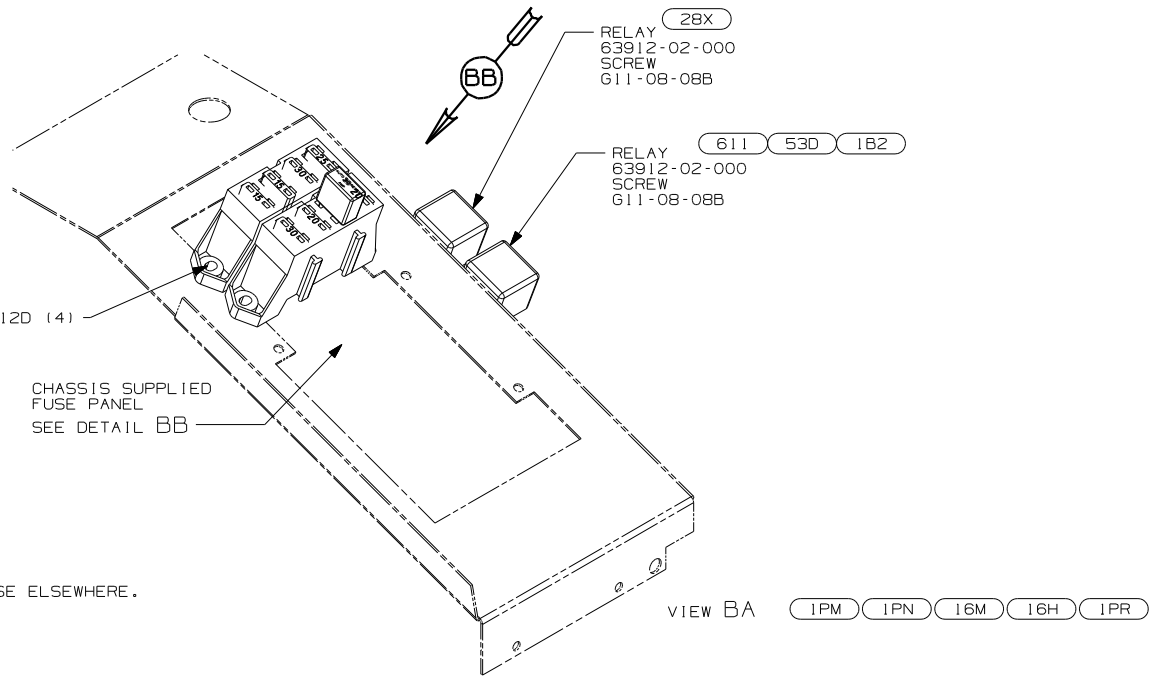
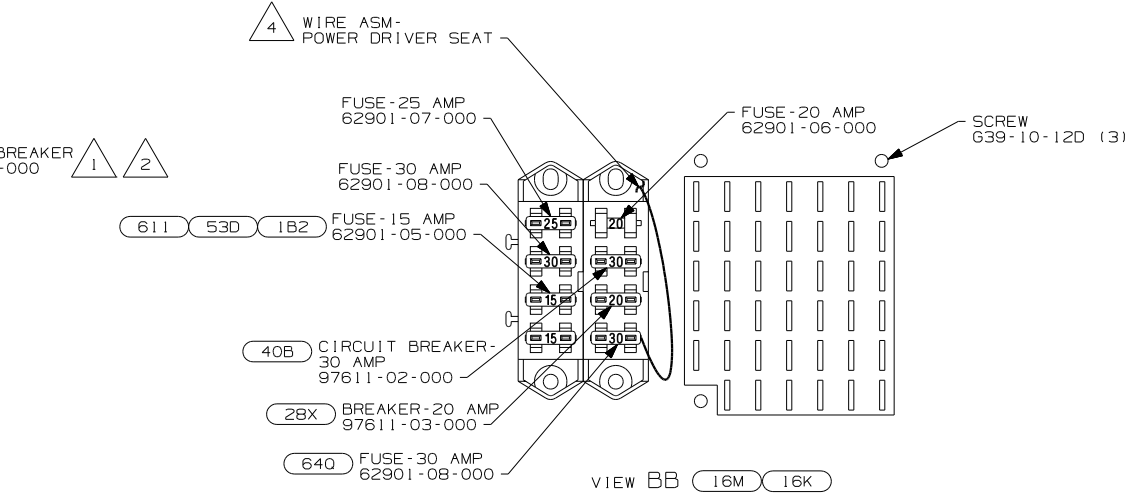
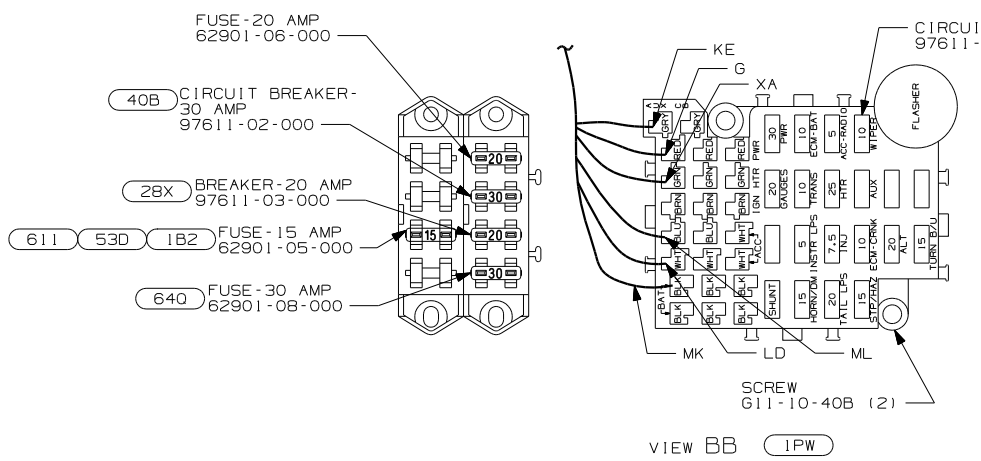
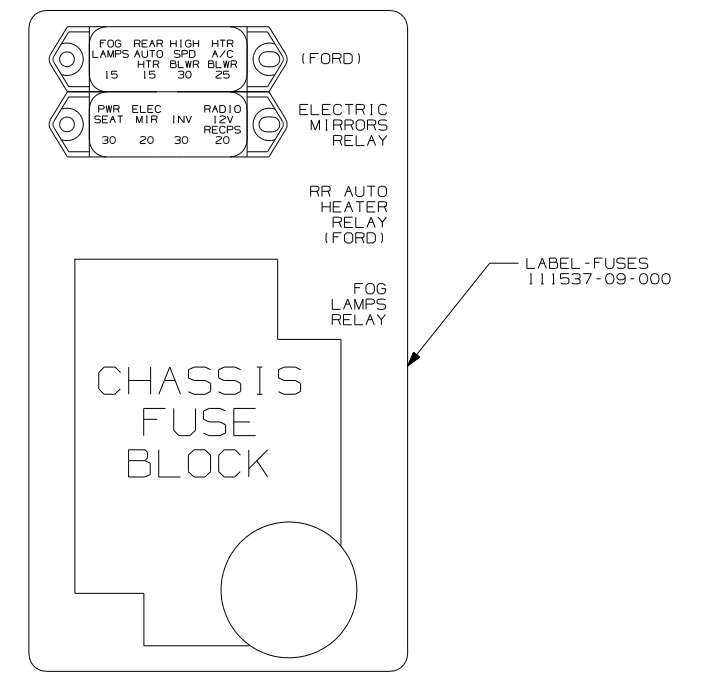
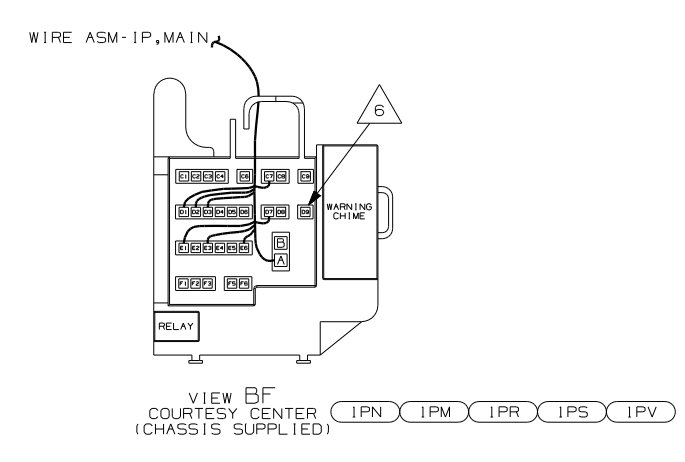
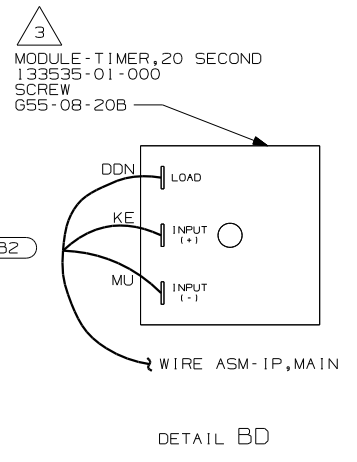
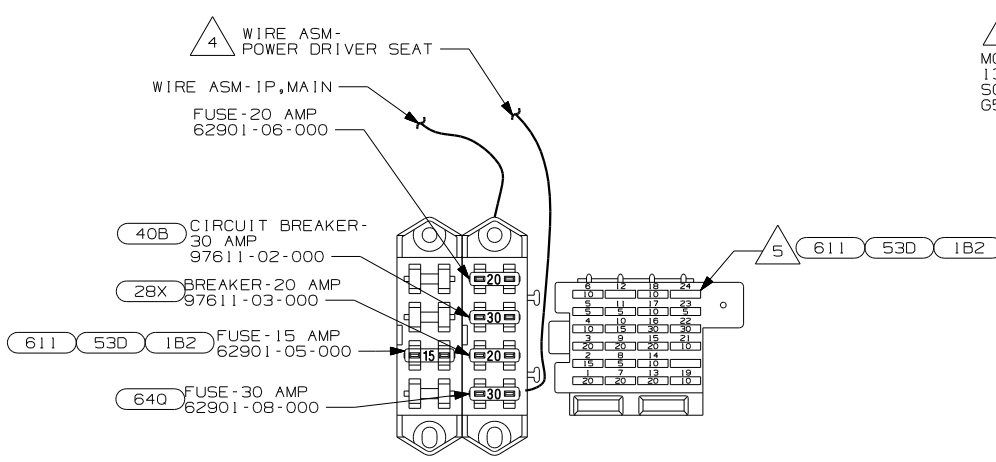
- NOTES:
3. CONNECT CHASSIS SUPPLIED BRN/WHT WIRE TO TERMINAL ON PARK BRAKE IF PARK BRAKE IS PRESENT.
  2. FOR ADDITIONAL INFORMATION SEE WIRING INSTL-CHASSIS.
  1. ONLY WINNEBAGO WIRE ASSEMBLIES ARE SHOWN FOR CLARITY.

- 1JM HOME THEATER SOUND SYSTEM
- 1PW WORKHORSE 18000 DSL EXP WARR
- 1PV WORKHORSE 24,000#-22.5 TIRE
- 1PS WORKHORSE 22,000#-22.5 TIRE
- 1PR WORKHORSE 22,000#-19.5 TIRE
- 1PN WORKHORSE 20,700#
- 1PM WORKHORSE CHASSIS-18,000LB.
- 16M FORD CHASSIS 20,500#/V10 ENG
- 16K FORD CHASSIS 22,000
- 40B INVERTER-DC/AC, 300 WATT
- 36N FANS-DEFROSTER, AUXILIARY
- 12L DOOR-DRIVER

<b>WINNEBAGO</b>		COPYRIGHT 2004 WINNEBAGO INDUSTRIES, INC.	
DFTR	ORIG. DATE		
CHKR	ALL DIMENSIONS ARE IN MILLIMETERS		
P.E.	FIRST USED		
M.E.	05 F SERIES		
DSNR			
UNSPECIFIED TOLERANCES ARE:		MATERIAL:	
WHOLE DIM (X)	:		
ONE-PLACE (X.X)	:		
TWO-PLACE (X.XX)	:		
ANGLE	:		
THIRD ANGLE PROJECTION			
DO NOT SCALE DRAWING			
TITLE:		WIRING INSTL-FRONT END	
SHEET 1 of 6	PART NO	148555	

FOR ELECTRICAL  
TORQUE  
SPECIFICATIONS  
SEE DWG NO.  
128783-01-000

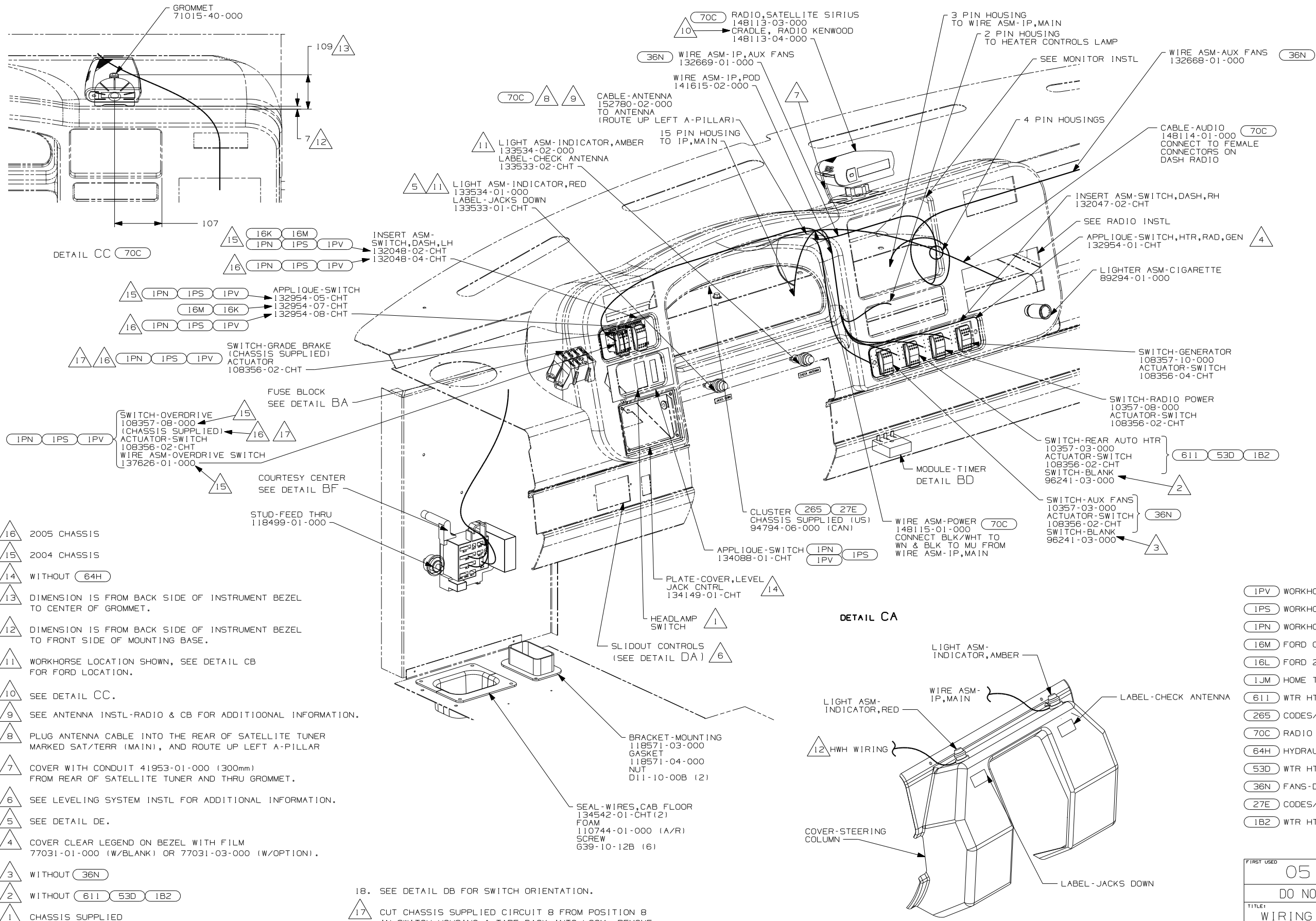
FOR  
ELECTRICAL  
CALLOUTS  
SEE DWG NO.  
121339-01-000



- NOTES:
- 6 CONNECT CHASSIS SUPPLIED CONNECTOR LABELED "SEAT BELT BYPASS" TO POSITION D9 IN CONVENIENCE CENTER.
  - 5 REPLACE 5 AMP FUSE IN #24 WITH AMP FUSE 125986-05-000.
  - 4 MOUNT TERMINAL IN FUSE BLOCK.
  - 3 MOUNT ON TOP LEFT REAR CORNER OF PANEL-COVER,RADIATOR.
  - 2 REPLACE 30A CIRCUIT BREAKER WITH 15 AMP FUSE AND SAVE FOR USE ELSEWHERE.
  - 1 TRIM FUSE BLOCK SO CIRCUIT BREAKER FITS PROPERLY. REPLACE 25 AMP FUSE AND SAVE FOR USE ELSEWHERE.

- 53D WTR HTR-6GAL/ELE/LP/MOTORAID
- 1B2 WTR HTR-10GAL/ELEC/LP/MTRAID
- 611 WTR HTR-RR AUTO/MOTORAID
- 64Q SEAT PED-6-WAY POWER DRIVER
- 40B INVERTER-DC/AC, 300 WATT
- 28X MIRRORS-EXTERIOR W/DEFROST
- 16M FORD CHASSIS 20,500#/V10 ENG
- 16K FORD CHASSIS 22,000
- 1PW WORKHORSE 18000 DSL EXP WARR
- 1PV WORKHORSE 24,000#-22.5 TIRE
- 1PS WORKHORSE 22,000#-22.5 TIRE
- 1PR WORKHORSE 22,000#
- 1PN WORKHORSE 20,700#-19.5 TIRE
- 1PM WORKHORSE CHASSIS-18,000LB.

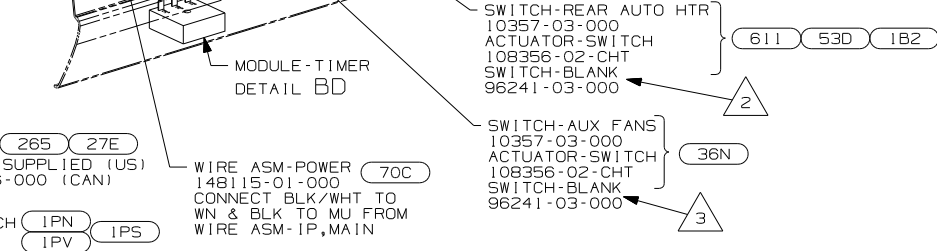
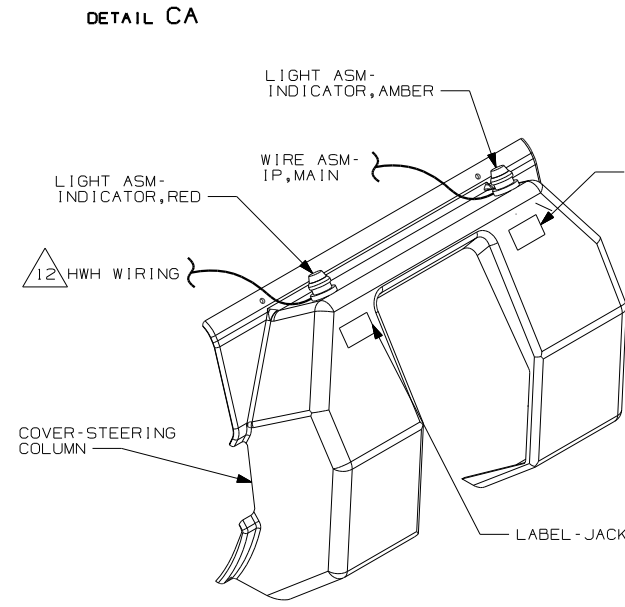
FIRST USED	05 F SERIES
DO NOT SCALE DRAWING	
TITLE:	WIRING INSTL-FRONT END
SHEET 2	PART NO 148555



- 16 2005 CHASSIS
- 15 2004 CHASSIS
- 14 WITHOUT (64H)
- 13 DIMENSION IS FROM BACK SIDE OF INSTRUMENT BEZEL TO CENTER OF GROMMET.
- 12 DIMENSION IS FROM BACK SIDE OF INSTRUMENT BEZEL TO FRONT SIDE OF MOUNTING BASE.
- 11 WORKHORSE LOCATION SHOWN, SEE DETAIL CB FOR FORD LOCATION.
- 10 SEE DETAIL CC.
- 9 SEE ANTENNA INSTL-RADIO & CB FOR ADDITIONAL INFORMATION.
- 8 PLUG ANTENNA CABLE INTO THE REAR OF SATELLITE TUNER MARKED SAT/TERR (MAIN), AND ROUTE UP LEFT A-PILLAR
- 7 COVER WITH CONDUIT 41953-01-000 (300mm) FROM REAR OF SATELLITE TUNER AND THRU GROMMET.
- 6 SEE LEVELING SYSTEM INSTL FOR ADDITIONAL INFORMATION.
- 5 SEE DETAIL DE.
- 4 COVER CLEAR LEGEND ON BEZEL WITH FILM 77031-01-000 (W/BLANK) OR 77031-03-000 (W/OPTION).
- 3 WITHOUT (36N)
- 2 WITHOUT (611) (53D) (1B2)
- 1 CHASSIS SUPPLIED

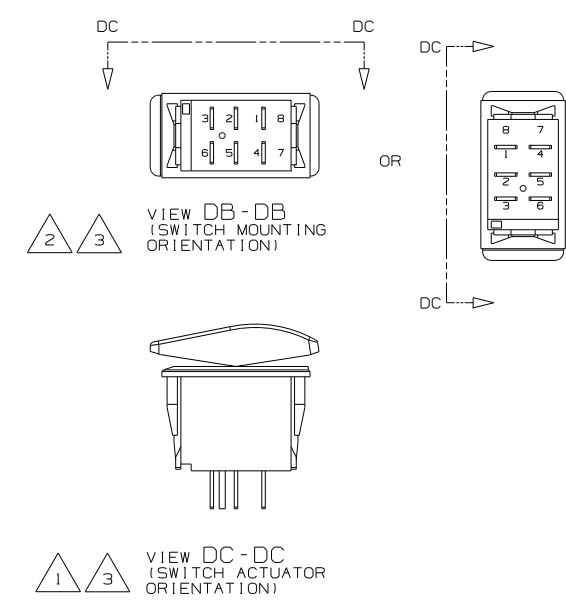
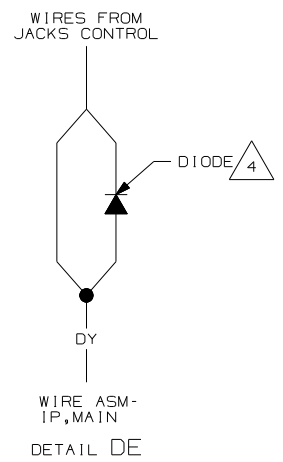
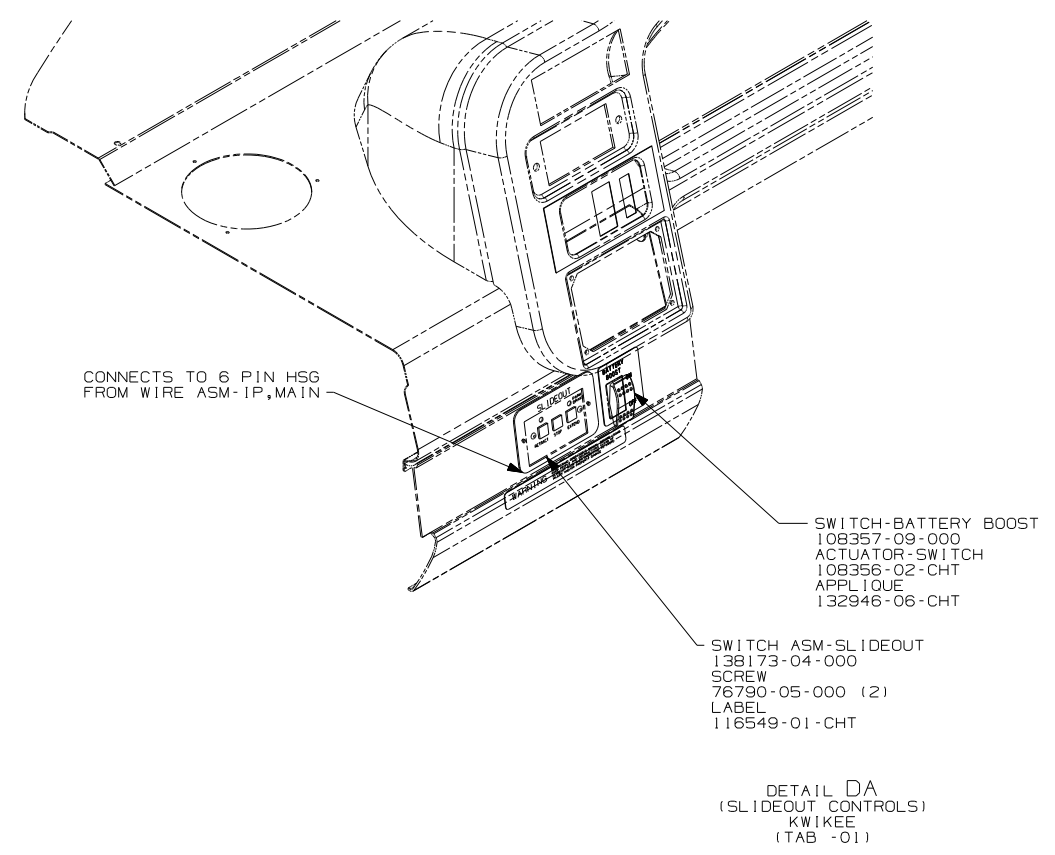
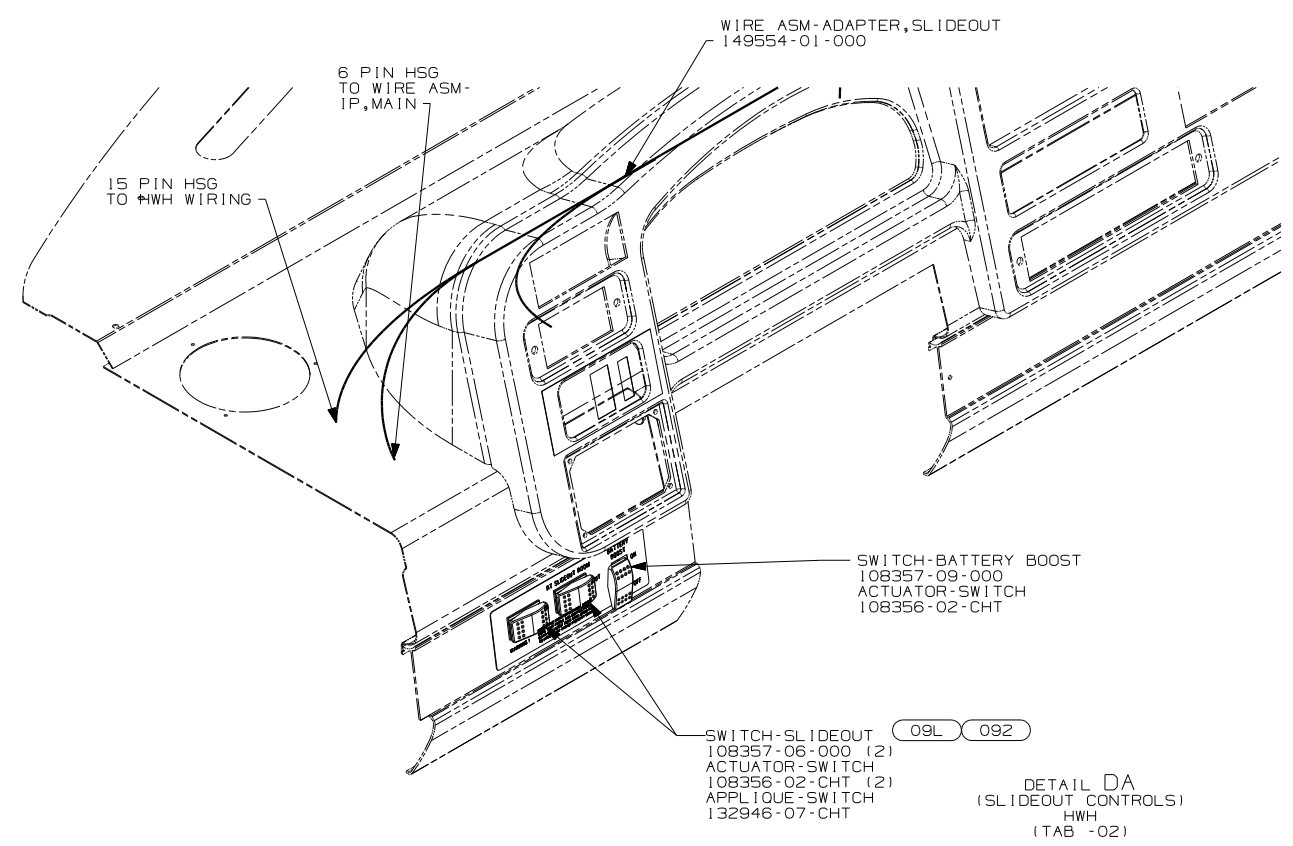
18. SEE DETAIL DB FOR SWITCH ORIENTATION.

17 CUT CHASSIS SUPPLIED CIRCUIT 8 FROM POSITION 8 IN SWITCH HOUSING & TAPE BACK INTO LOOM. REMOVE ACTUATOR FROM SUPPLIED SWITCH AND USE NOTED ONE.



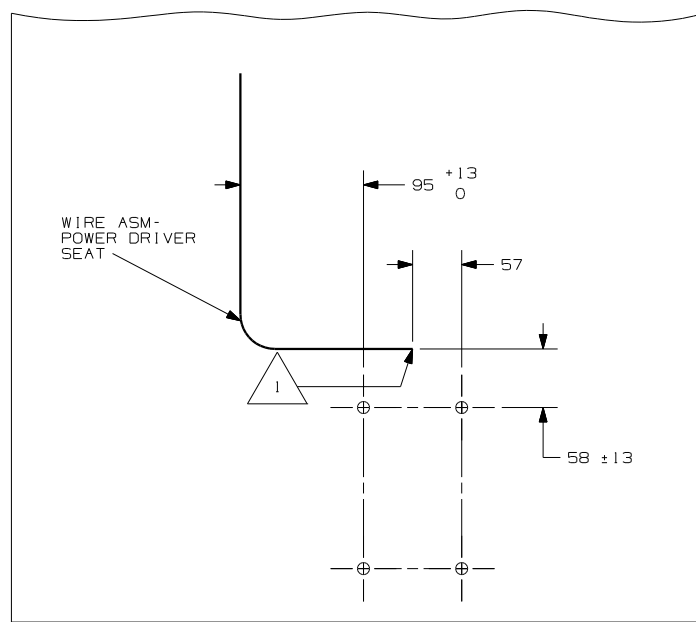
- (1PV) WORKHORSE 24,000#-22.5 TIRE
- (1PS) WORKHORSE 22,000#-22.5 TIRE
- (1PN) WORKHORSE 20,700#
- (16M) FORD CHASSIS 20,500#/V10 ENG
- (16L) FORD 22,000#-22.5 AL WHL
- (1JM) HOME THEATER SOUND SYSTEM
- (611) WTR HTR-RR AUTO/MOTORAID
- (265) CODES/STANDARDS-CSA/CMVSS
- (70C) RADIO - SATELLITE
- (64H) HYDRAULIC LEVELING JACKS
- (53D) WTR HTR-6GAL/ELE/LP/MOTORAID
- (36N) FANS-DEFROSTER, AUXILIARY
- (27E) CODES/STANDARDS-CMVSS
- (1B2) WTR HTR-10GAL/ELEC/LP/MTRAI

FIRST USED	05 F SERIES	
TITLE	DO NOT SCALE DRAWING	
	WIRING INSTL-FRONT END	
SHEET 3	PART NO	148555

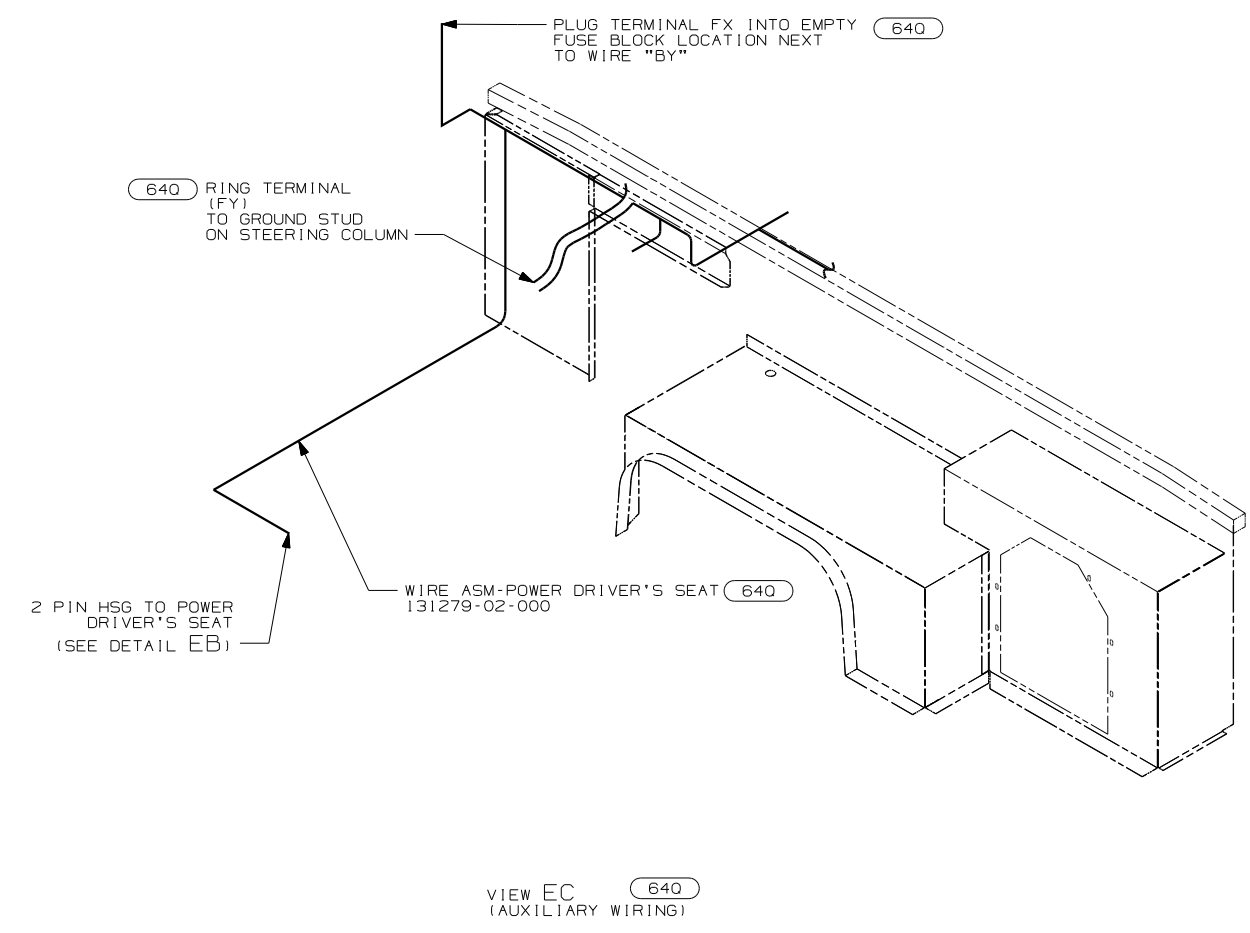


- NOTES:
- 4 TIE DIODE BACK INTO LOOM ON HWH SYSTEMS, ON KWIKEE SYSTEMS, SPLICE BOTH WIRES TOGETHER W/DY.
  - 3 SWITCH SHOWN WITHOUT WIRE ASM HOUSING CONNECTED.
  - 2 SAME FOR ALL SWITCHES EXCEPT GENERATOR, AUX START, & 2005 CHASSIS OVERDRIVE SWITCHES.
  - 1 SAME FOR ALL DASH SWITCHES.

092	SLIDEOUT ROOM - FRONT RIGHT
09L	SLIDEOUT ROOM FRONT LEFT
FIRST USED	
05 F SERIES	
DO NOT SCALE DRAWING	
TITLE:	
WIRING INSTL-FRONT END	
SHEET 4	PART NO 148555



DETAIL EB 640

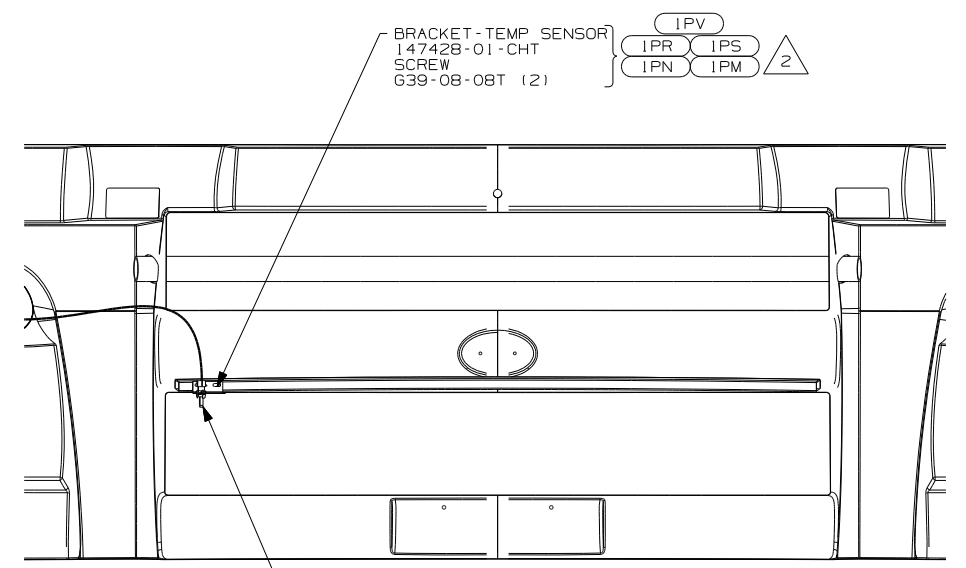


VIEW EC 640 (AUXILIARY WIRING)

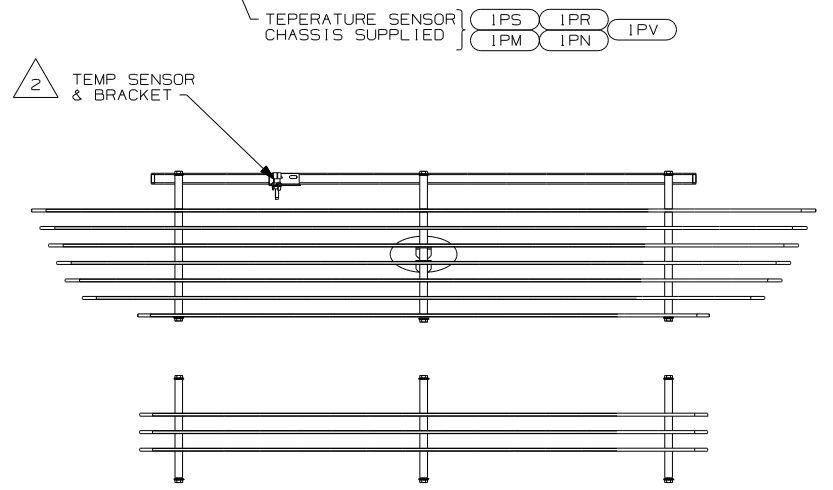
NOTES:

1 LEAVE 675, ±50MM OF WIRE AT PEDESTAL.

640 SEAT PED-6-WAY POWER DRIVER	
FIRST USED	05 F SERIES
DO NOT SCALE DRAWING	
TITLE	WIRING INSTL-FRONT END
SHEET 5	PART NO 148555

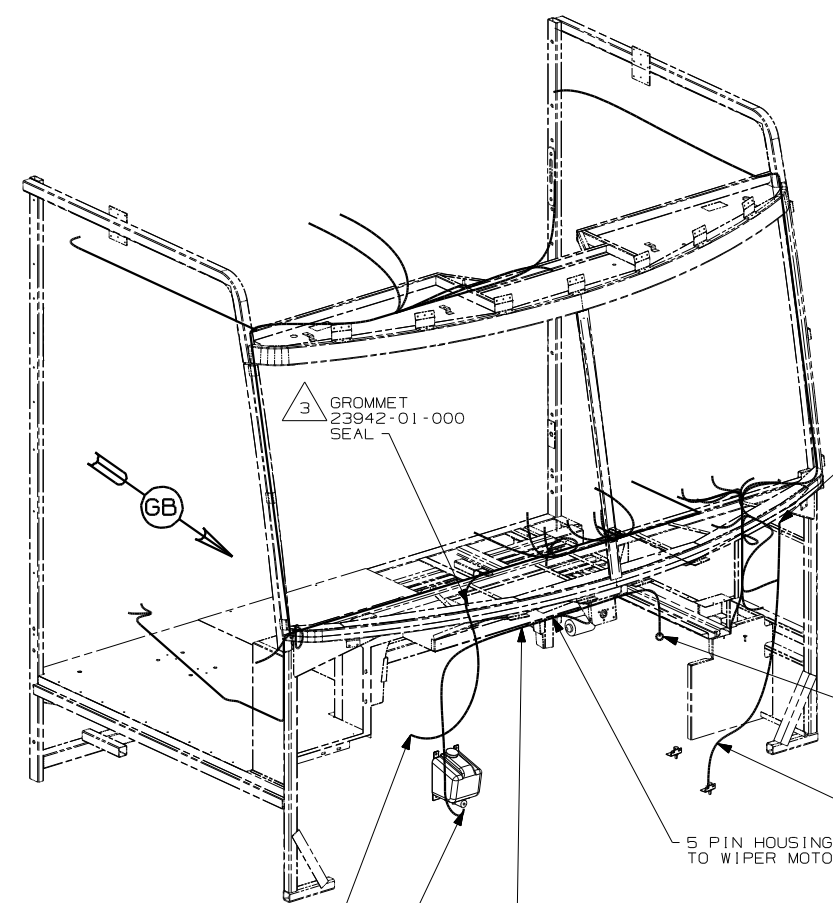


DETAIL GB  
(ITA)



DETAIL GB  
(WINN)

- (WIN) WINNEBAGO ONLY
- (16M) FORD CHASSIS 20,500#/V10 ENG
- (16K) FORD CHASSIS 22,000
- (1PW) WORKHORSE 18000 DSL EXP WARR
- (1PV) WORKHORSE 24,000#-22.5 TIRE
- (IPS) WORKHORSE 22,000#-22.5 TIRE
- (1PR) WORKHORSE 22,000#-19.5 TIRE
- (1PN) WORKHORSE 20,700#
- (1PM) WORKHORSE CHASSIS-18,000LB.



3 GROMMET  
23942-01-000  
SEAL

CHASSIS SUPPLIED  
2-PIN HOUSING LABELED  
(OUTSIDE TEMP SENSOR)  
REMOVE CAP HOUSING &  
CONNECT TO WIRE ASM-  
TEMP SENSOR

(IPS) (1PR) (1PV)  
(1PM) (1PN)

CHASSIS HOUSING  
TO CHASSIS WIPER  
CONNECTION

WIRE ASM-TEMP SENSOR  
147313-01-000

(IPS) (1PR) (1PV)  
(1PM) (1PN)

5 PIN HOUSING  
TO WIPER MOTOR

2 PIN HOUSING  
TO WASHER BOTTLE

(16K) (16M) A/C PRESSURE SWITCH  
(FORD ONLY)

(16K) (16M) WIRE ASM-WIPER/WASHER  
11096-03-000  
(1PW) 113134-03-000  
(1PV) 126030-01-000

(1PV) (1PM) (1PS) (1PR) (1PN)

- 3 ROUTE WIRES THROUGH HOLE IN STEEL.
- 2 MOUNT SENSOR OR SENSOR BRACKET TO HORIZONTAL TUBE ON FIBERGLASS AS SHOWN.

1. GATHER ALL EXCESS WIRE AFTER MAKING ALL CONNECTIONS AND BUNDLE AND SECURE WITH TIE-WIRE 8343-01-000 OR 93147-01-000.

NOTES:

FIRST USED	05 F SERIES
TITLE	DO NOT SCALE DRAWING
TITLE	WIRING INSTL-FRONT END
SHEET 6	PART NO 148555