



DANGER

Danger of electrical shock, burns or death. Always remove all power sources before attempting any repair, service or diagnostic work. Power can be present from shore power, generator, inverter or battery. All power sources must be disabled and secured before performing any service.



CAUTION

If you lack the skills, tools or equipment to perform diagnostic or repair work leave such work to an authorized Winnebago Industries dealer or other qualified shop.

	8	7	6	5	4	3	2	1
	F31W	F33V	F35D	F35A	F36M	F38J		
BLK	14-UL	136131-06-070	136131-06-035	136131-06-035	136131-06-072	136131-06-119	136131-06-040	(276) (29R)
	14-CA	136134-06-070	136134-06-035	136134-06-035	136134-06-072	136134-06-119	136134-06-040	(276) (29R)
BLK	12-UL	136135-06-070	N/A	N/A	N/A	N/A	N/A	(1F7)
	12-CA	136136-06-070	N/A	N/A	N/A	N/A	N/A	(1F7)
BLU	14-UL	136131-02-157	136131-02-080	136131-02-080	136131-02-150	136131-02-200	136131-02-115	
	14-CA	136134-02-157	136134-02-080	136134-02-080	136134-02-150	136134-02-200	136134-02-115	
BRN	14-UL	136131-03-070	136131-03-130	136131-03-135	136131-03-070	136131-03-171	136131-03-045	
	14-CA	136134-03-070	136134-03-130	136134-03-135	136134-03-070	136134-03-171	136134-03-045	
GLD	12-UL	N/A	N/A	136135-10-140	136135-10-060	136135-10-112	136135-10-068	(21M) (54E)
	12-CA	N/A	N/A	136136-10-140	136136-10-060	136136-10-112	136136-10-068	(21M) (54E)
GRN	12-UL	N/A	136135-08-118	136135-08-118	136135-08-040	136135-08-027	136135-08-045	(276) (29R) (78J)
	12-CA	N/A	136136-08-118	136136-08-118	136136-08-040	136136-08-027	136136-08-045	(276) (29R) (78J)
GRN	12-UL	136135-08-075	136135-08-100	136135-08-105	136135-08-067	136135-08-056	136135-08-065	(276) (29R) (12D)
	12-CA	136136-08-075	136136-08-100	136136-08-105	136136-08-067	136136-08-056	136136-08-065	(276) (29R) (12D)
GRN 2	12-UL	136135-14-067	136135-14-065	136135-14-070	136135-14-075	136135-14-054	136135-14-080	(276) (29R) (12D)
	12-CA	136136-14-067	136136-14-065	136136-14-070	136136-14-075	136136-14-054	136136-14-080	(276) (29R) (12D)
PUR	14-UL	136131-04-100	136131-04-230	136131-04-210	136131-04-140	136131-04-096	136131-04-160	
	14-CA	136134-04-100	136134-04-230	136134-04-210	136134-04-140	136134-04-096	136134-04-160	
RED	12-UL	136135-07-096	136135-07-118	136135-07-118	136135-07-040	136135-07-027	136135-07-045	
	12-CA	136136-07-096	136136-07-118	136136-07-118	136136-07-040	136136-07-027	136136-07-045	
WHT	12-UL	136135-09-079	136135-09-085	136135-09-085	136135-09-050	136135-09-075	136135-09-040	(1B2) (53D)
	12-CA	136136-09-079	136136-09-085	136136-09-085	136136-09-050	136136-09-075	136136-09-040	(1B2) (53D)
YEL	14-UL	136131-05-028	N/A	N/A	N/A	N/A	N/A	(1F7)
	14-CA	136134-05-028	N/A	N/A	N/A	N/A	N/A	(1F7)
YEL	14-UL	136131-05-014	136131-05-030	136131-05-030	136131-05-054	136131-05-119	136131-05-052	(276) (29R)
	14-CA	136134-05-014	136134-05-030	136134-05-030	136134-05-054	136134-05-119	136134-05-052	(276) (29R)
YEL 2	14-UL	136131-13-028	136131-13-055	136131-13-055	136131-13-050	136131-13-101	136131-13-055	(276) (29R)
	14-CA	136134-13-028	136134-13-055	136134-13-055	136134-13-050	136134-13-101	136134-13-055	(276) (29R)
MAIN	10-UL	136137-01-075	136137-01-100	136137-01-105	136137-01-067	136137-01-056	136137-01-060	(12D)
	10-CA	136138-01-075	136138-01-100	136138-01-105	136138-01-067	136138-01-056	136138-01-060	(12D)
	6-3 UL	136139-01-075	136139-01-100	136139-01-105	136139-01-067	136139-01-056	136139-01-060	(78J)
	6-3 CA	136140-01-075	136140-01-100	136140-01-105	136140-01-067	136140-01-056	136140-01-060	(78J)
MAIN GROUND		136145-01-020	136145-01-034	136145-01-034	136145-01-045	136145-01-040	136145-01-045	
ATS GROUND		136145-01-060	136145-01-065	136145-01-070	136145-01-048	136145-01-026	136145-01-061	(276) (29R)

RELEASE REV DATE A 1 48484
 REV ZONE REVISION RECORD DATE DFR-ORIG

- (78J) ELECTRICAL SYSTEM - 50 AMP
- (54E) WASHER/DRYER COMBINATION
- (53D) WTR HTR - 6 GAL/ELE/LP/MOTORAID
- (29R) HEAT PUMPS - 2-HI EFF
- (276) A/C ROOF - HI EFF (2) W/EMS
- (265) CODES/STANDARDS - CSA/CMVSS
- (21M) WASHER/DRYER PREP
- (1F7) ENERGY MANAGEMENT SYSTEM W/O
- (1B2) WTR HTR - 10GAL/ELEC/LP/MTRAID
- (1B1) CODES/STANDARDS - USA
- (12D) ELECTRICAL SYSTEM - 30 AMP

(1B1) (265)

WINNEBAGO COPYRIGHT 2004 WINNEBAGO INDUSTRIES, INC.

DFTR	ORIG. DATE
CHKR	ALL DIMENSIONS ARE IN MILLIMETERS
P.E.	
M.E.	FIRST USED
DSNR	05 F-SERIES

UNSPECIFIED TOLERANCES ARE:
 HOLE DIM (X) : 1
 ONE-PLACE (X.X) : 1.5
 TWO-PLACE (X.XX) : 0.50
 ANGLE : 1°

THIRD ANGLE PROJECTION

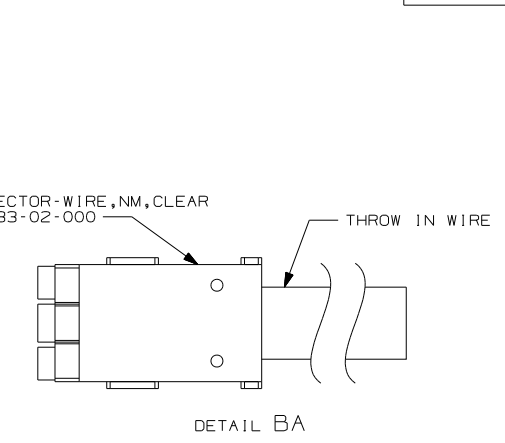
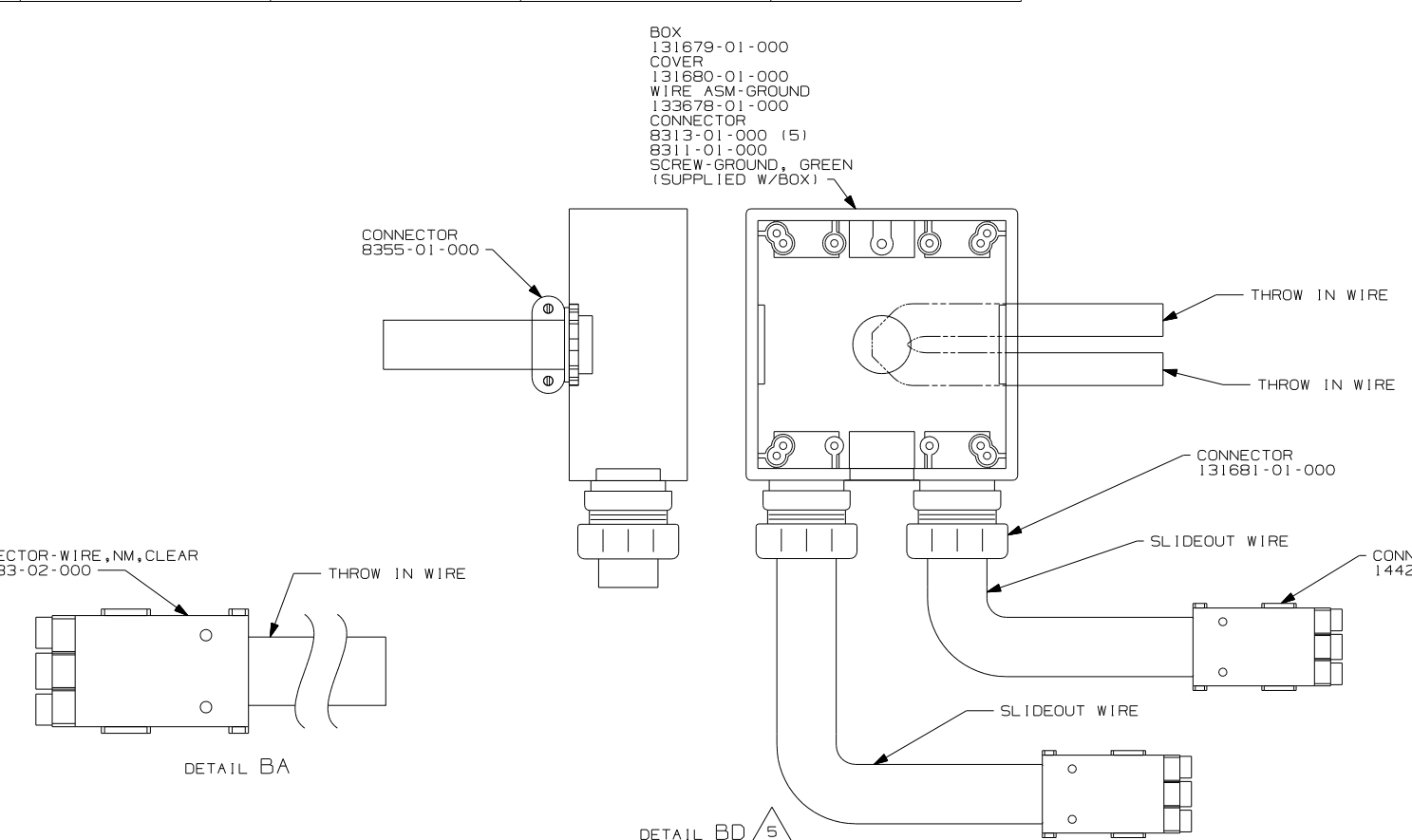
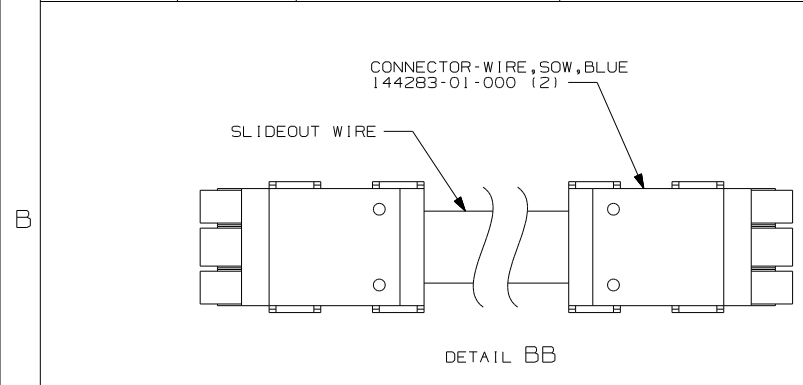
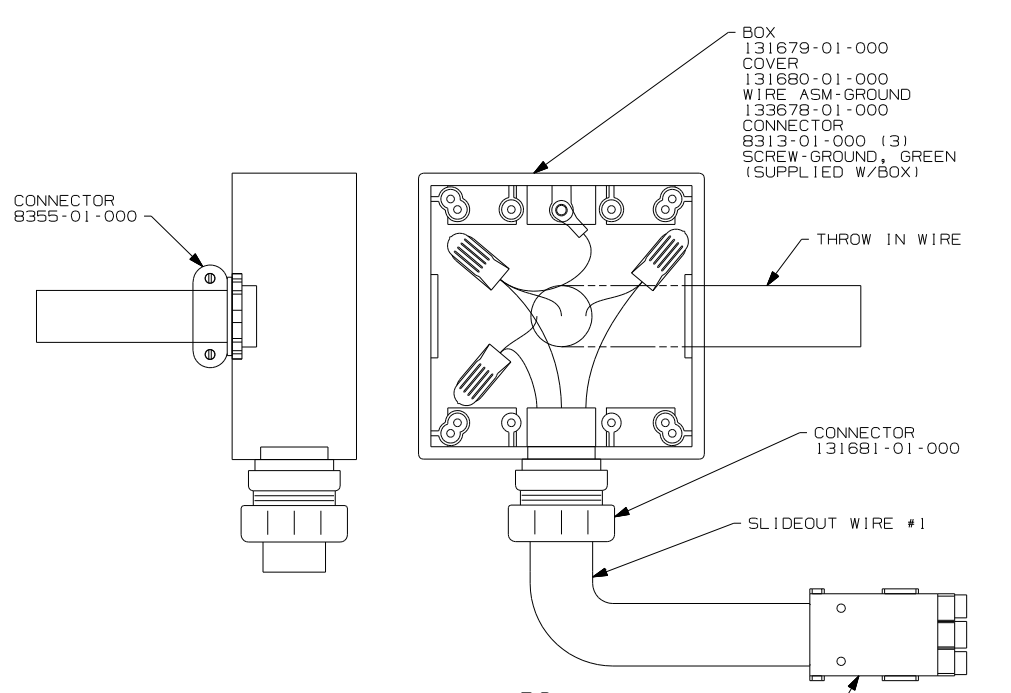
DO NOT SCALE DRAWING

TITLE: LOAD CENTER/ATS ASM

SHEET 1 OF 5 PART NO 148484

SEE DETAIL BA
 NOTES:

	8	7	6	5	4	3	2	1
		F30W	F33V	F34D	F35A	F36M	F38J	
THROW IN WIRE #1	14-UL	136131-03-080	136131-03-063 ³	136131-03-068 ³	136131-03-055 ³	136131-03-072 ¹	136131-03-055 ¹	
	14-CA	136134-03-080	136134-03-063 ³	136134-03-068 ³	136134-03-055 ³	136134-03-072 ¹	136134-03-055 ¹	
THROW IN WIRE #2	14-UL	N/A	N/A	N/A	136131-02-026	N/A	136131-12-100 ⁴	
	14-CA	N/A	N/A	N/A	136134-02-026	N/A	136134-12-100 ⁴	
THROW IN WIRE #3	14-UL	N/A	N/A	N/A	136131-02-021 ¹	N/A	136131-03-006 ¹	
	14-CA	N/A	N/A	N/A	136134-02-021 ¹	N/A	136134-03-006 ¹	
THROW IN WIRE #4	14-UL	N/A	N/A	N/A	N/A	N/A	136131-12-030 ¹	
	14-CA	N/A	N/A	N/A	N/A	N/A	136134-12-030 ¹	
THROW IN WIRE #5	14-UL	N/A	N/A	N/A	N/A	N/A	136131-03-075 ⁴	
	14-CA	N/A	N/A	N/A	N/A	N/A	136134-03-075 ⁴	
SLIDEOUT WIRE #1		136151-03-030	136151-03-028 ³	136151-03-028 ³	136151-03-030 ³	136151-03-028 ²	136151-03-038 ²	
SLIDEOUT WIRE #2		136151-04-026 ²	136151-04-017 ²	136151-04-017 ²	136151-04-017 ²	136151-04-017 ²	136151-04-017 ²	
SLIDEOUT WIRE #3		136152-06-030	N/A	N/A	136151-06-017 ²	N/A	136151-06-038 ²	
SLIDEOUT WIRE #4		N/A	N/A	N/A	136151-02-017 ²	N/A	136151-12-025 ⁴	
SLIDEOUT WIRE #5		N/A	N/A	N/A	N/A	N/A	136151-03-025 ⁴	



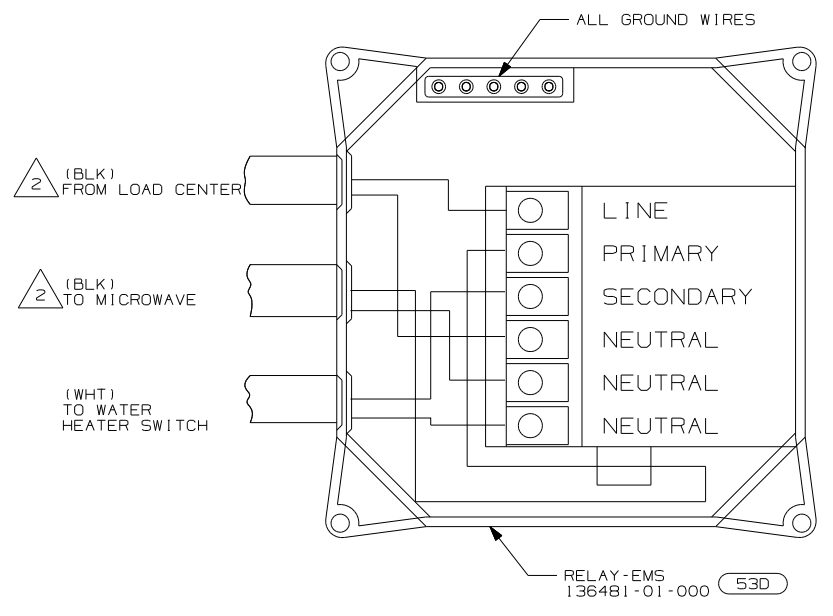
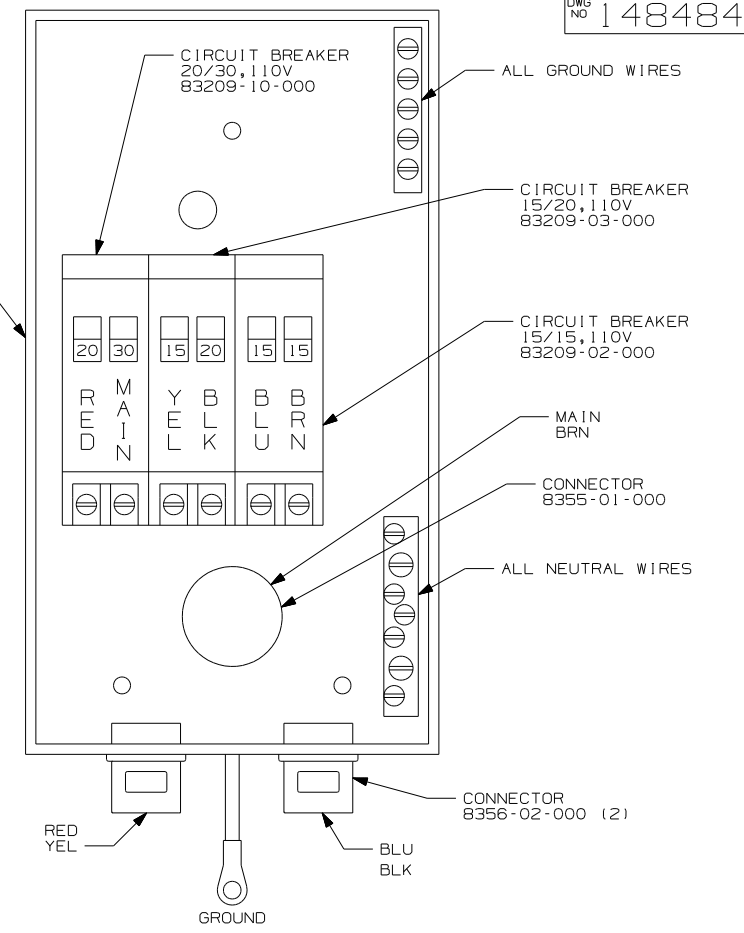
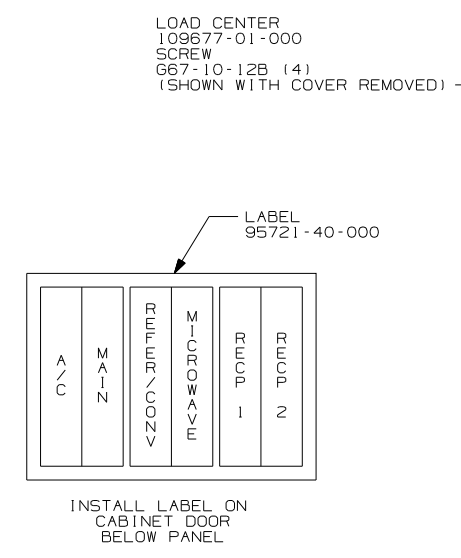
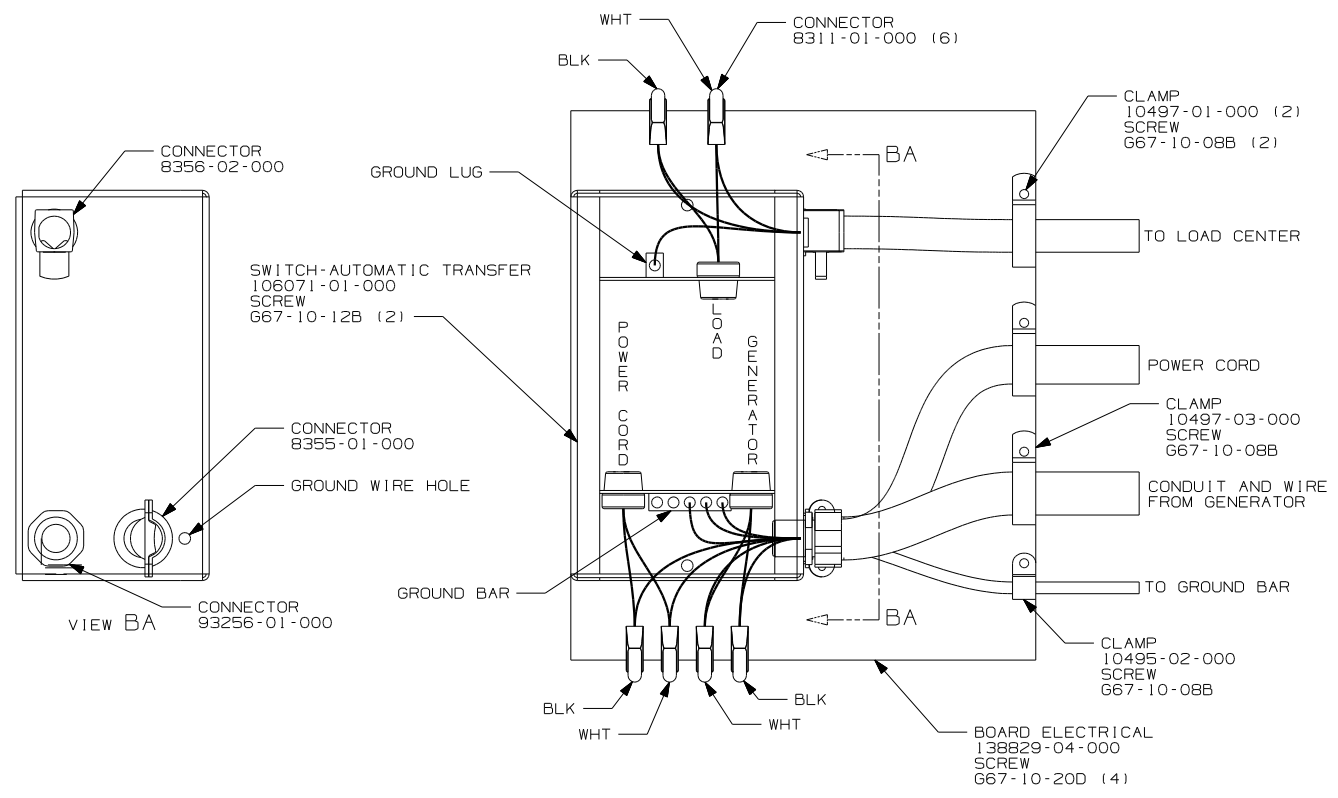
⁵ THE BLACK INDIVIDUAL CONDUCTORS FOR EACH SPECIFIC COLORED CIRCUIT ARE TO BE CONNECTED TOGETHER. THE WHITE INDIVIDUAL CONDUCTORS FOR EACH SPECIFIC COLORED CIRCUIT ARE TO BE CONNECTED TOGETHER. ALL GROUND WIRES ARE TO BE CONNECTED TOGETHER.

- ⁴ SEE DETAIL BD
- ³ SEE DETAIL BC
- ² SEE DETAIL BB
- ¹ SEE DETAIL BA

- (78J) ELECTRICAL SYSTEM - 50 AMP
- (265) CODES/STANDARDS - CSA/CMVSS
- (1B1) CODES/STANDARDS - USA
- (12D) ELECTRICAL SYSTEM - 30 AMP

(12D) (1B1) (265) (78J)

FIRST USED	05 F-SERIES	
TITLE	DO NOT SCALE DRAWING	
	LOAD CENTER/ATS ASM	
SHEET 2	PART NO	148484



- (53D) WTR HTR-6 GAL/ELE/LP/MOTORAID
- (265) CODES/STANDARDS - CSA/CMVSS
- (IF7) ENERGY MANAGEMENT SYSTEM W/O
- (IB1) CODES/STANDARDS - USA
- (I2D) ELECTRICAL SYSTEM - 30 AMP

2 MEASURE 1000MM FROM THE BACK OF THE LOAD CENTER, LOOP THE BLACK WIRE AND CONNECT AS SHOWN.

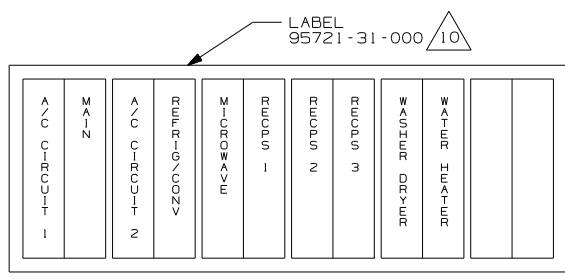
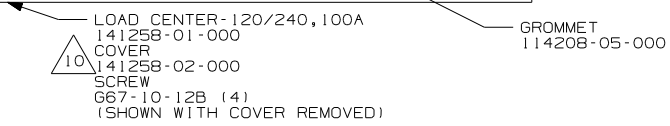
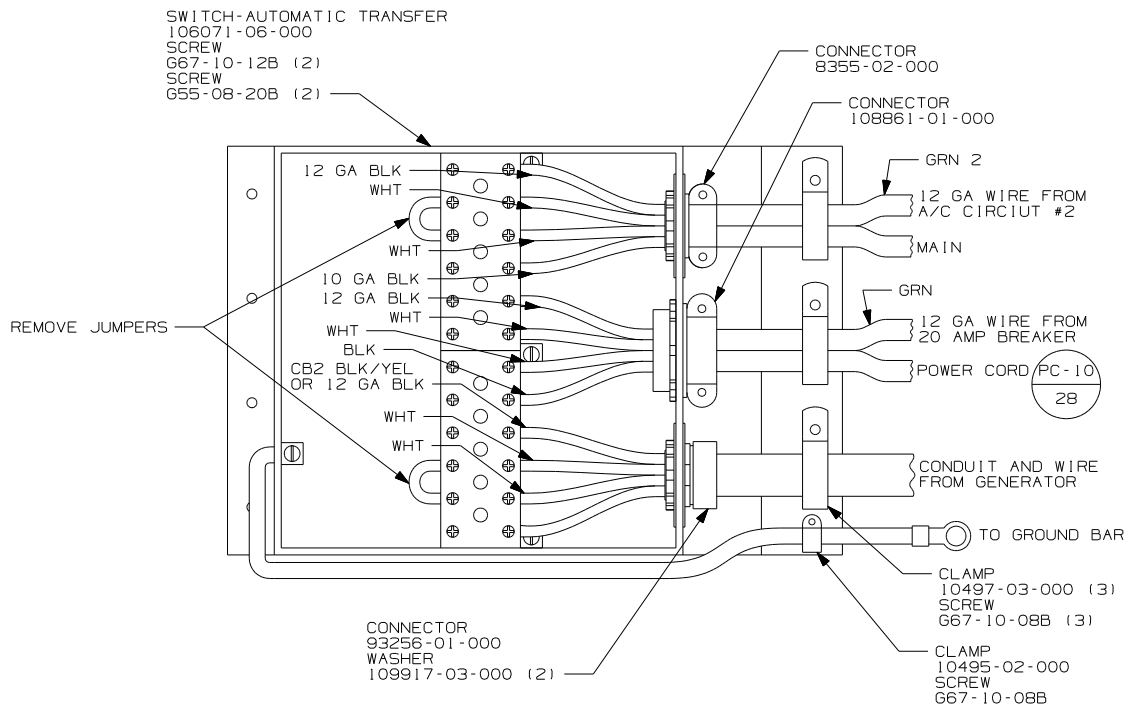
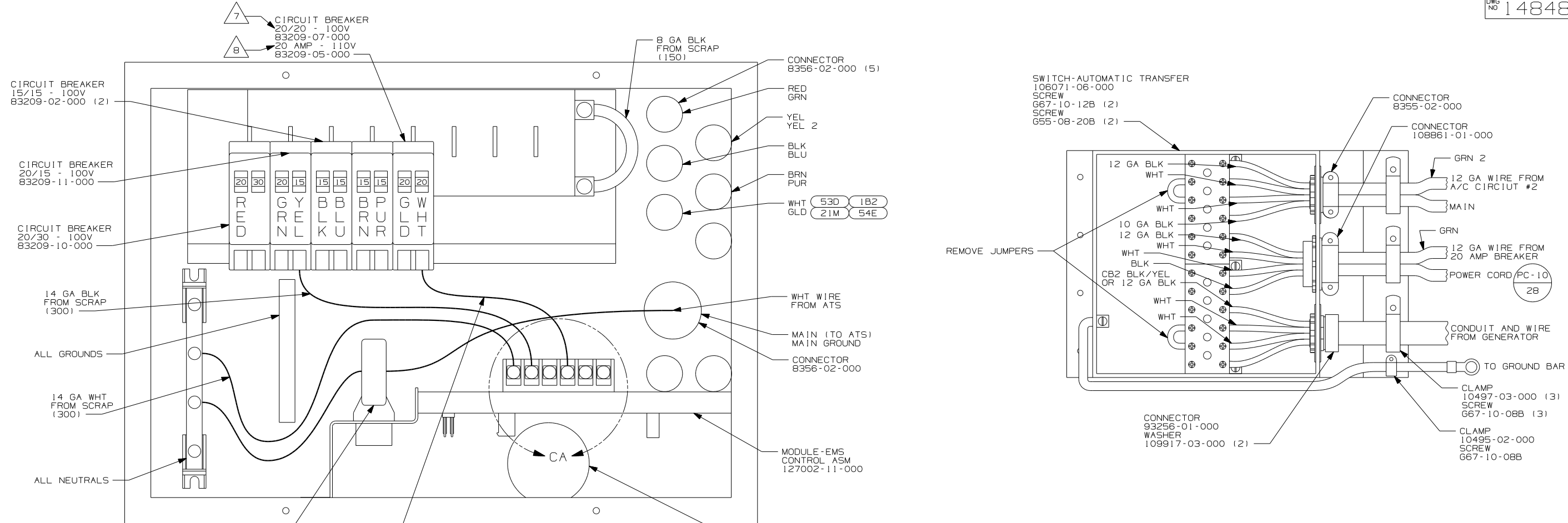
1. ALL GROUND WIRES TO BE COVERED WITH TUBING 8041-02-000.

NOTES:

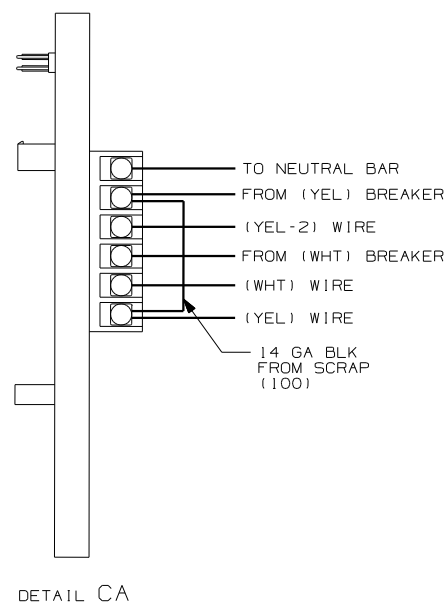
FOR ELECTRICAL TORQUE SPECIFICATIONS SEE DWG NO. 128783-01-000

FOR ELECTRICAL CALLOUTS SEE DWG NO. 121339-01-000

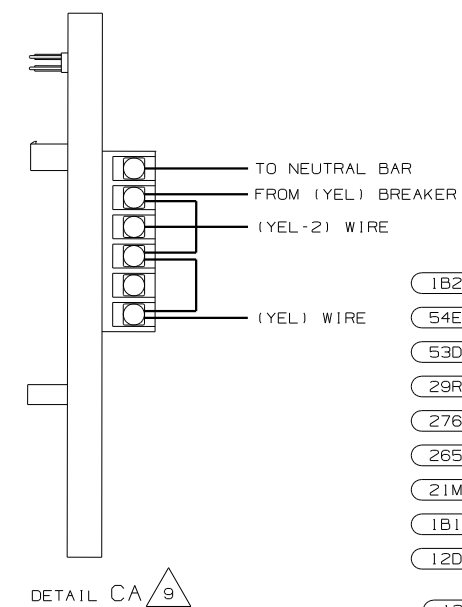
FIRST USED	
05 F-SERIES	
DO NOT SCALE DRAWING	
TITLE: LOAD CENTER/ATS ASM	
SHEET 3	PART NO 148484



INSTALL LABEL ON FRONT PANEL BELOW BREAKERS BETWEEN MOUNTING HOLES



DETAIL CA



DETAIL CA 9

- 10 INSTALLED BY ASSEMBLY LINE.
- 9 WITHOUT (53D) (1B2)
- 8 WITH (21M) WITHOUT (53D) (1B2), OR WITH (54E) WITHOUT (53D) (1B2), OR WITH (53D) (1B2) WITHOUT (21M) (54E) ONLY.
- 7 WITH (21M) (53D) (1B2) OR (54E) (53D) (1B2) ONLY.

6. ALL WIRES MUST BE 500MM LONG INSIDE LOAD CENTER.
5. ATTACH WIRES TO BACKSIDE OF LOAD CENTER, USE EXISTING HOLES AND TIE-WIRE 116673-01-000.
4. ALL 110V STRANDED WIRE W/O TERMINALS TO BE STRIPPED 10MM AND SOLDER DIPPED.
3. ALL WIRES TO BE CLAMPED WITHIN 200MM OF ATS.
2. GROUND WIRES ARE NOT SHOWN FOR CLARITY.
1. ALL GROUND WIRES TO BE COVERED WITH TUBING 8041-02-000.

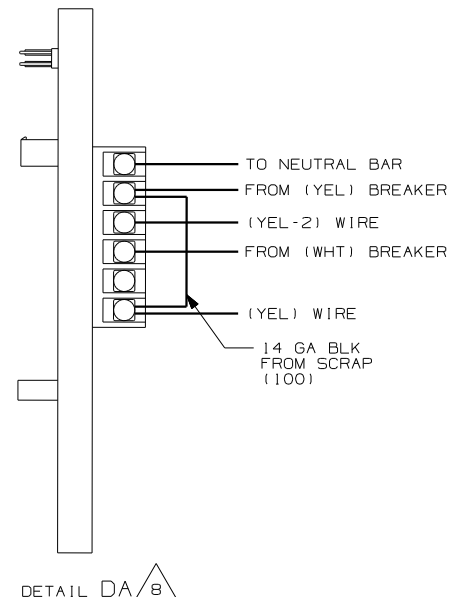
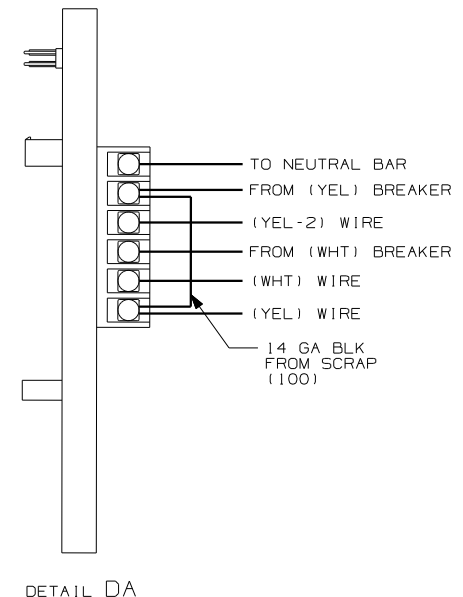
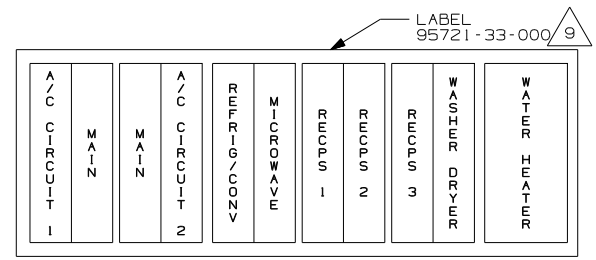
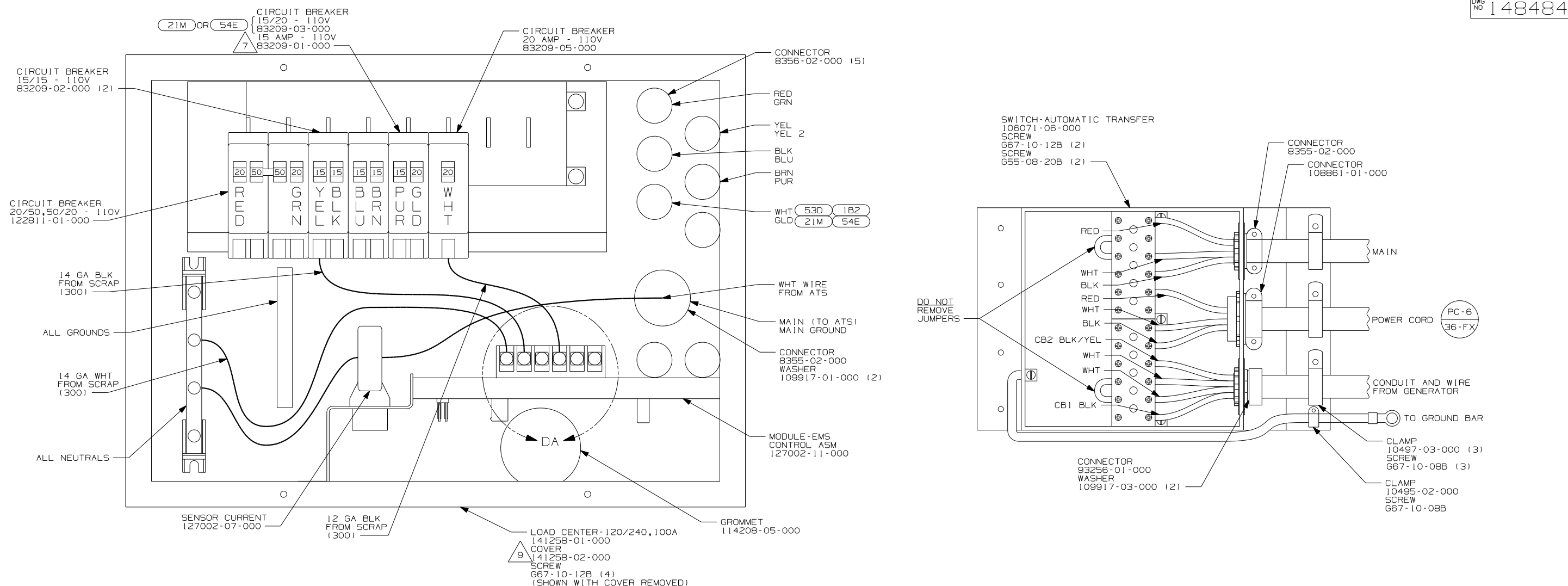
NOTES:

- (1B2) WTR HTR-10GAL/ELEC/LP/MTRAIID
- (54E) WASHER/DRYER
- (53D) WTR HTR - 6 GAL/ELE/LP/MOTORAID
- (29R) HEAT PUMPS-2-HI EFF
- (276) A/C ROOF - HI EFF (2) W/EMS
- (265) CODES/STANDARDS - CSA/CMVSS
- (21M) WASHER/DRYER PREP
- (1B1) CODES/STANDARDS - USA
- (12D) ELECTRICAL SYSTEM - 30 AMP

FIRST USED	
05 F-SERIES	
DO NOT SCALE DRAWING	
TITLE: LOAD CENTER/ATS ASM	
SHEET 4	PART NO 148484

FOR ELECTRICAL TORQUE SPECIFICATIONS SEE DWG NO. 128783-01-000

FOR ELECTRICAL CALLOUTS SEE DWG NO. 121339-01-000



- 9 INSTALLED BY ASSEMBLY LINE.
- 8 WITHOUT (53D) (1B2)
- 7 WITHOUT (21M) OR (54E).

6. ALL WIRES MUST BE 500MM LONG INSIDE LOAD CENTER.
5. ATTACH WIRES TO BACKSIDE OF LOAD CENTER, USE EXISTING HOLES AND TIE-WIRE 116673-01-000.
4. ALL 110V STRANDED WIRE W/O TERMINALS TO BE STRIPPED 10MM AND SOLDER DIPPED.
3. ALL WIRES TO BE CLAMPED WITHIN 200MM OF ATS.
2. GROUND WIRES ARE NOT SHOWN FOR CLARITY.
1. ALL GROUND WIRES TO BE COVERED WITH TUBING 8041-02-000.

NOTES:

- (1B2) WTR HTR-10GAL/ELEC/LP/MTR/AID
- (7BJ) ELECTRICAL SYSTEM - 50 AMP
- (54E) WASHER/DRYER
- (29R) HEAT PUMPS-2-HI EFF
- (276) A/C ROOF-HI EFF (2) W/EMS
- (265) CODES/STANDARDS - CSA/CMVSS
- (21M) WASHER/DRYER PREP
- (1F7) ENERGY MANAGEMENT SYSTEM W/O
- (1B1) CODES/STANDARDS - USA

FOR ELECTRICAL TORQUE SPECIFICATIONS SEE DWG NO. 128783-01-000

FOR ELECTRICAL CALLOUTS SEE DWG NO. 121339-01-000

FIRST USED	
05 F-SERIES	
DO NOT SCALE DRAWING	
TITLE: LOAD CENTER/ATS ASM	
SHEET 5	PART NO 148484