



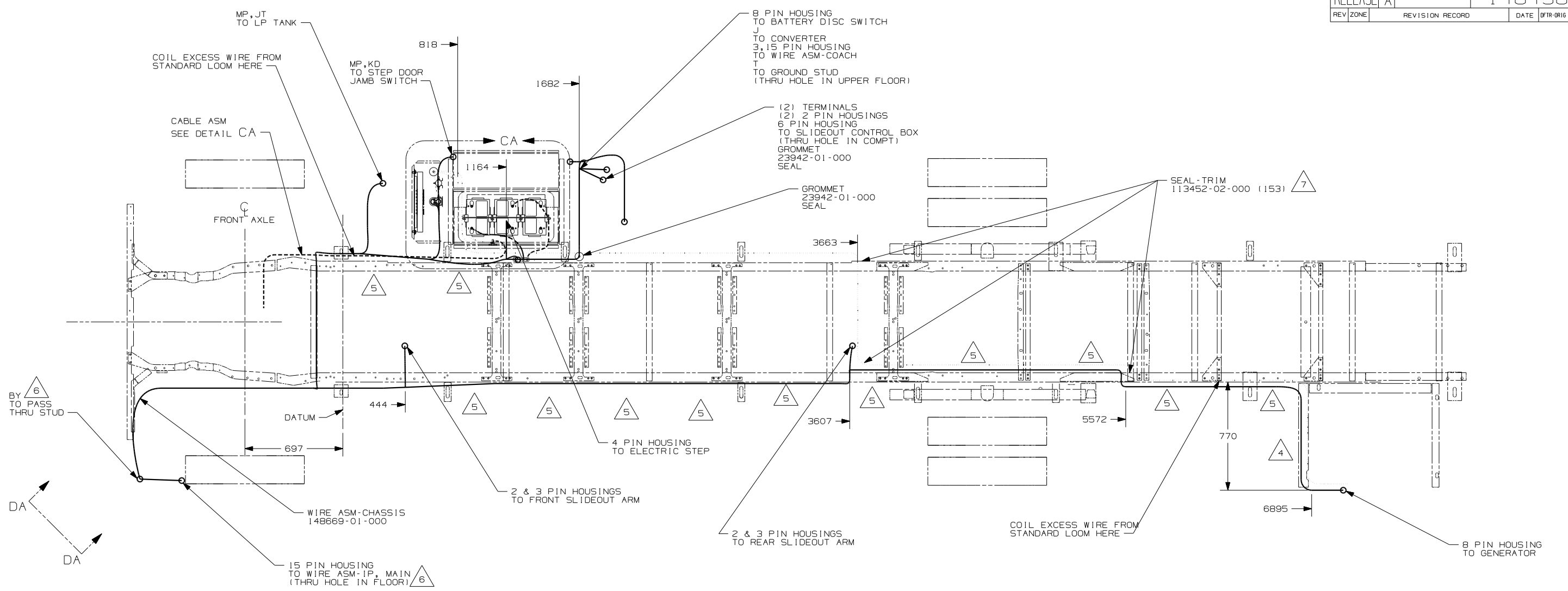
**DANGER**

**Danger of electrical shock, burns or death.** Always remove all power sources before attempting any repair, service or diagnostic work. Power can be present from shore power, generator, inverter or battery. All power sources must be disabled and secured before performing any service.



**CAUTION**

If you lack the skills, tools or equipment to perform diagnostic or repair work leave such work to an authorized Winnebago Industries dealer or other qualified shop.



BY <sup>6</sup> TO PASS THRU STUD

DA

DA

FRONT AXLE

DATUM

444

697

WIRE ASM-CHASSIS 148669-01-000

15 PIN HOUSING TO WIRE ASM-IP, MAIN (THRU HOLE IN FLOOR) <sup>6</sup>

2 & 3 PIN HOUSINGS TO FRONT SLIDEOUT ARM

4 PIN HOUSING TO ELECTRIC STEP

2 & 3 PIN HOUSINGS TO REAR SLIDEOUT ARM

COIL EXCESS WIRE FROM STANDARD LOOM HERE

8 PIN HOUSING TO GENERATOR

8 PIN HOUSING TO BATTERY DISC SWITCH

TO CONVERTER

3, 15 PIN HOUSING TO WIRE ASM-COACH

TO GROUND STUD (THRU HOLE IN UPPER FLOOR)

(2) TERMINALS

(2) 2 PIN HOUSINGS

6 PIN HOUSING TO SLIDEOUT CONTROL BOX (THRU HOLE IN COMPT)

GROMMET 23942-01-000 SEAL

GROMMET 23942-01-000 SEAL

SEAL-TRIM 113452-02-000 (153) <sup>7</sup>

MP, JT TO LP TANK

MP, KD TO STEP DOOR JAMB SWITCH

818

1682

1164

CA

CA

COIL EXCESS WIRE FROM STANDARD LOOM HERE

CABLE ASM SEE DETAIL CA

CLAMP 83610-01-000, SCREW G11-10-16B.

WIRE TIE 8343-04-000. FASTEN EVERY 600MM MINIMUM.

3. ALL DIMENSIONS ARE FROM DATUM UNLESS OTHERWISE SPECIFIED.

2. SECURE CONDUIT 41953, TAB AS REQUIRED, OVER ALL WIRES IN CONTACT WITH SHARP EDGES.

1. LEGEND: ——— WINNEBAGO: - - - - - CABLE: - - - - - CHASSIS SUPPLIED WIRING.

NOTES:

<sup>265</sup> CODES/STANDARDS-CSA/CMVSS

<sup>1B1</sup> CODES/STANDARDS USA

<sup>1PM</sup> WORKHORSE CHASSIS-18,000LB.

<sup>1PM</sup> <sup>1B1</sup> <sup>265</sup>

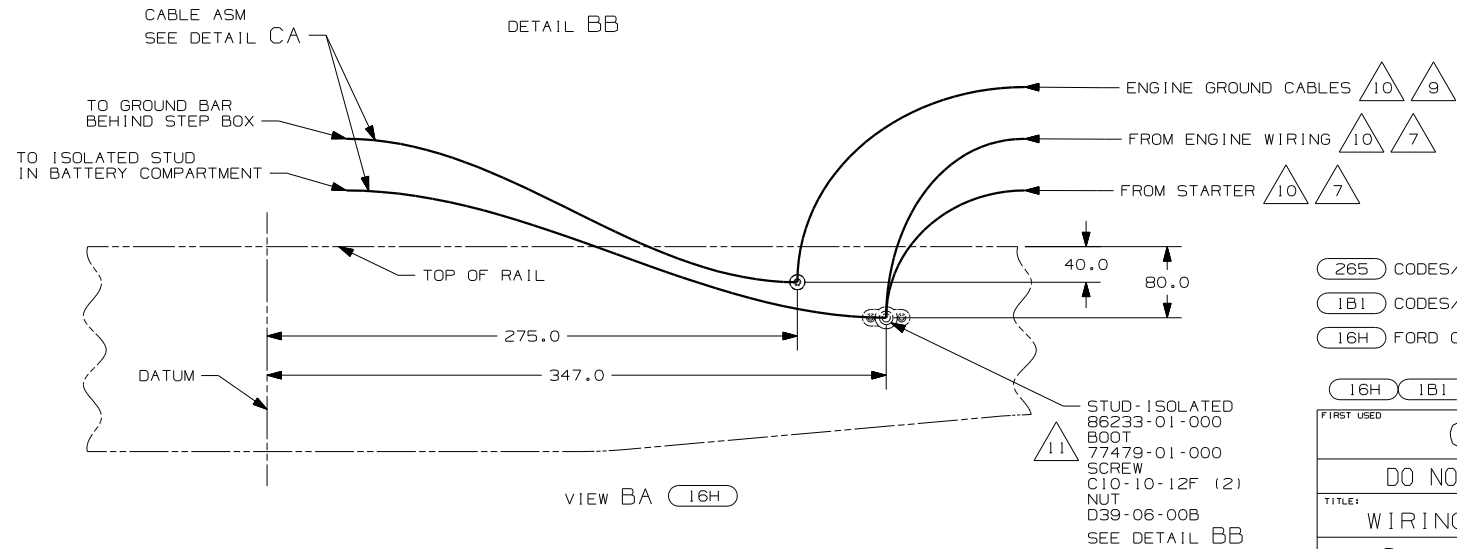
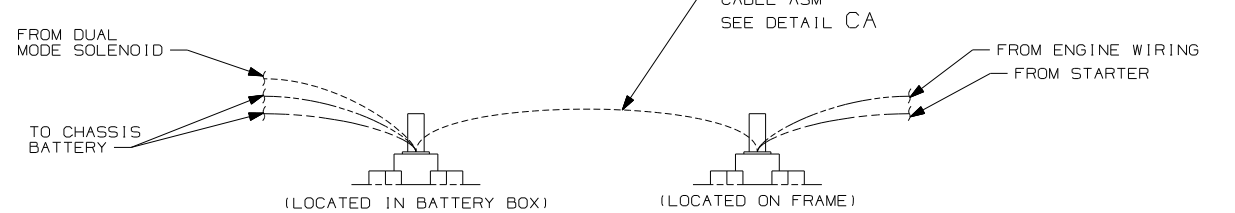
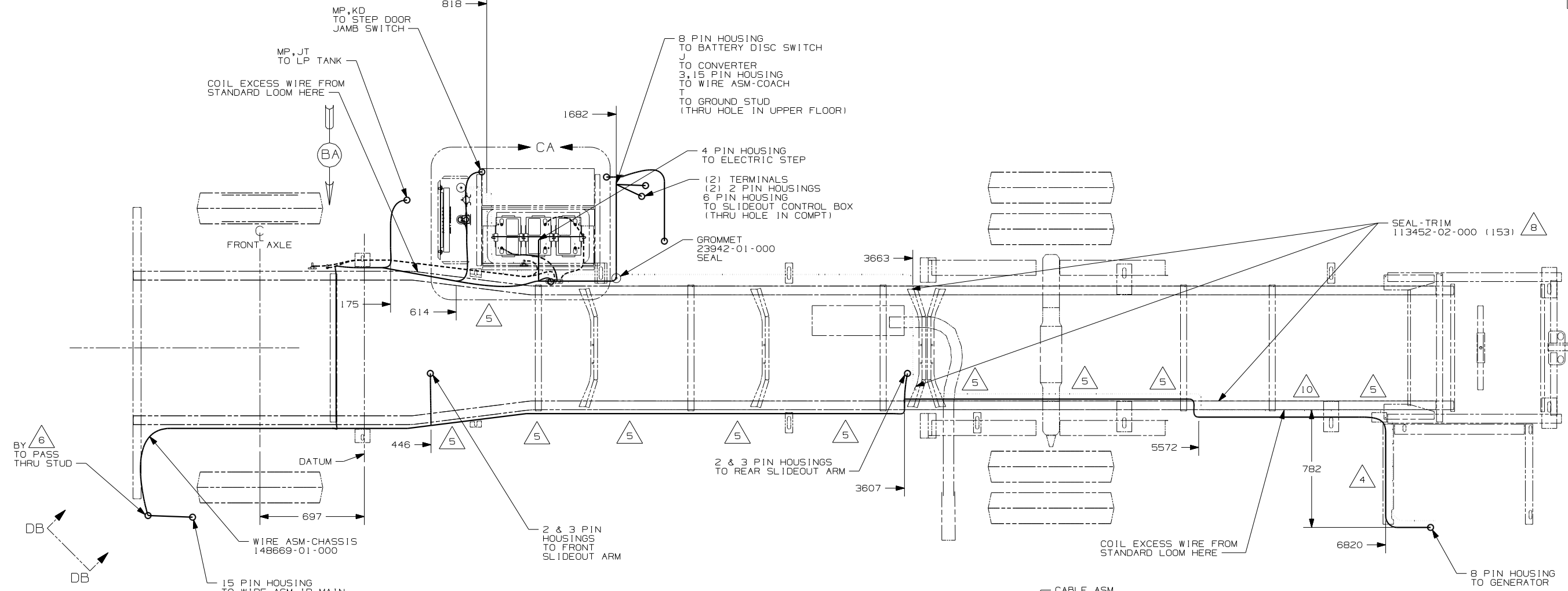


DFTR	ORIG. DATE
CHKR	ALL DIMENSIONS ARE IN MILLIMETERS
P.E.	
M.E.	FIRST USED
DSNR	05 D33L
UNSPECIFIED TOLERANCES ARE:	MATERIAL:
HOLE DIM (X)	: 1
ONE-PLACE (X.X)	: 1.5
TWO-PLACE (X.XX)	: 0.50
ANGLE	: 1°
THIRD ANGLE PROJECTION	

DO NOT SCALE DRAWING

TITLE: WIRING INSTL-CHASSIS

SHEET 1 OF 4 PART NO 148438



- 11 PLACE BOOT ON WITH SLIT END FACING THE REAR OF THE VEHICLE.
- 10 SUPPLIED WITH CHASSIS.
- 9 CUT 4 & 6 GA CABLES 400MM FROM BATTERY TERMINAL, ADD TERMINALS 8331-01-000 (2) TO 4 GA AND TERMINAL 8350-01-000 (2) TO 6 GA CABLE CONNECT ALL TERMINALS TO ISOLATED STUD AS SHOWN. DO NOT CUT 14 GA RED WIRE.
- 8 COVER SHARP EDGES WHERE WIRE CROSSES FRAME RAILS.
- 7 CUT 14 GA WIRE, 6 & 4 GA CABLES 500MM FROM BATTERY TERMINAL, ADD TERMINAL 8331-01-000 (2) TO 4 GA CABLES AND TERMINAL 8350-01-000 (2) TO 14 & 16 GA CABLES. CONNECT TERMINALS TO ISOLATED STUDS AS SHOWN IN DETAIL.
- 6 SEE WIRING INSTL-FRONT END FOR ADDITIONAL INFORMATION.
- 5 CLAMP 83610-01-000, SCREW G11-10-16B.
- 4 WIRE TIE 8343-04-000. FASTEN EVERY 600MM MINIMUM.

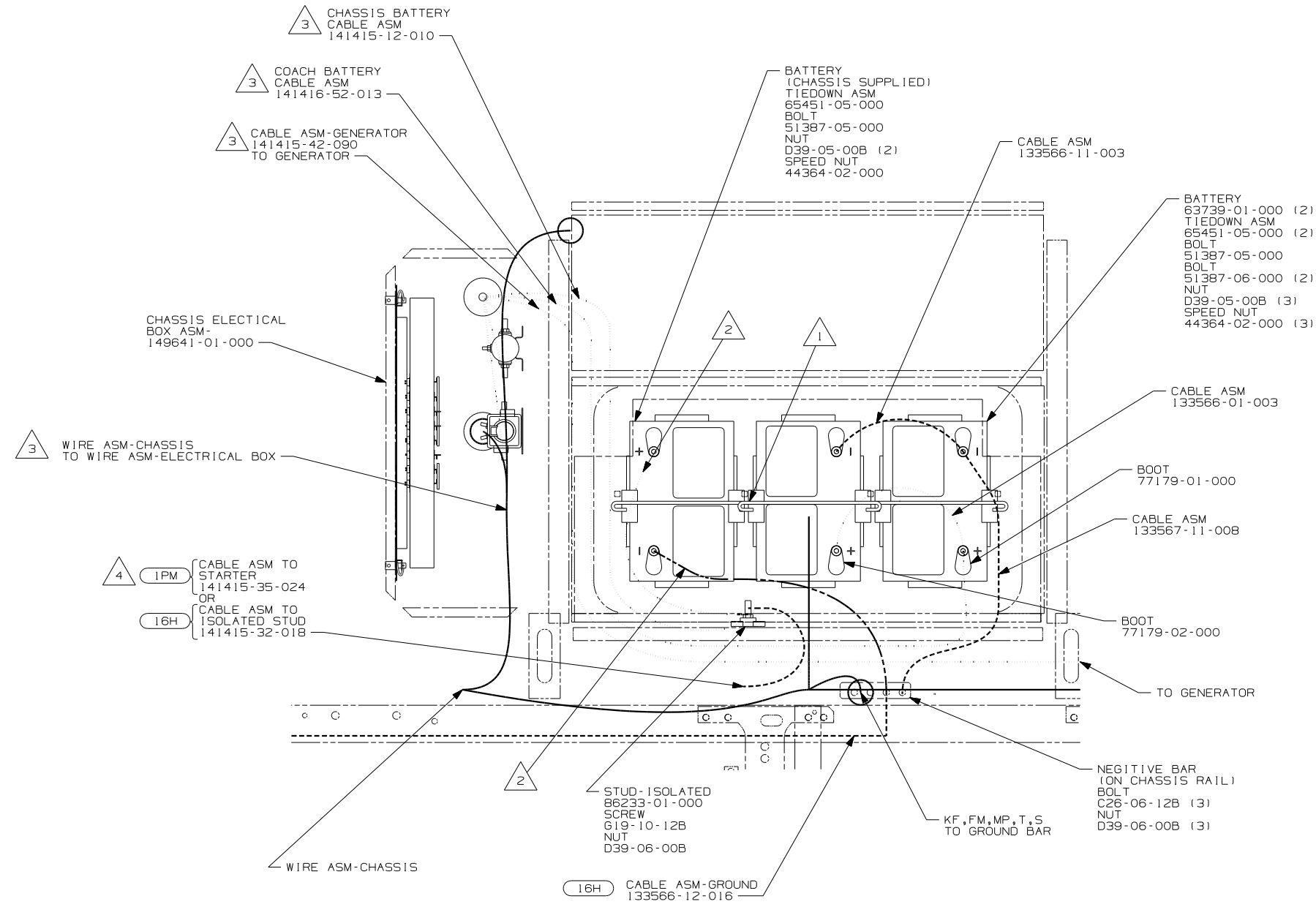
3. ALL DIMENSIONS ARE FROM DATUM UNLESS OTHERWISE SPECIFIED.

2. SECURE CONDUIT 41953, TAB AS REQUIRED, OVER ALL WIRES IN CONTACT WITH SHARP EDGES.

1. LEGEND: — WINNEBAGO: - - - - - CABLE: - - - - - CHASSIS SUPPLIED WIRING.

NOTES:

265	CODES/STANDARDS-CSA/CMVSS
1B1	CODES/STANDARDS USA
16H	FORD CHASSIS 18,000#/V10 ENG
16H 1B1 265	
FIRST USED	05 D33L
TITLE	DO NOT SCALE DRAWING
	WIRING INSTL-CHASSIS
SHEET 2	PART NO 148438



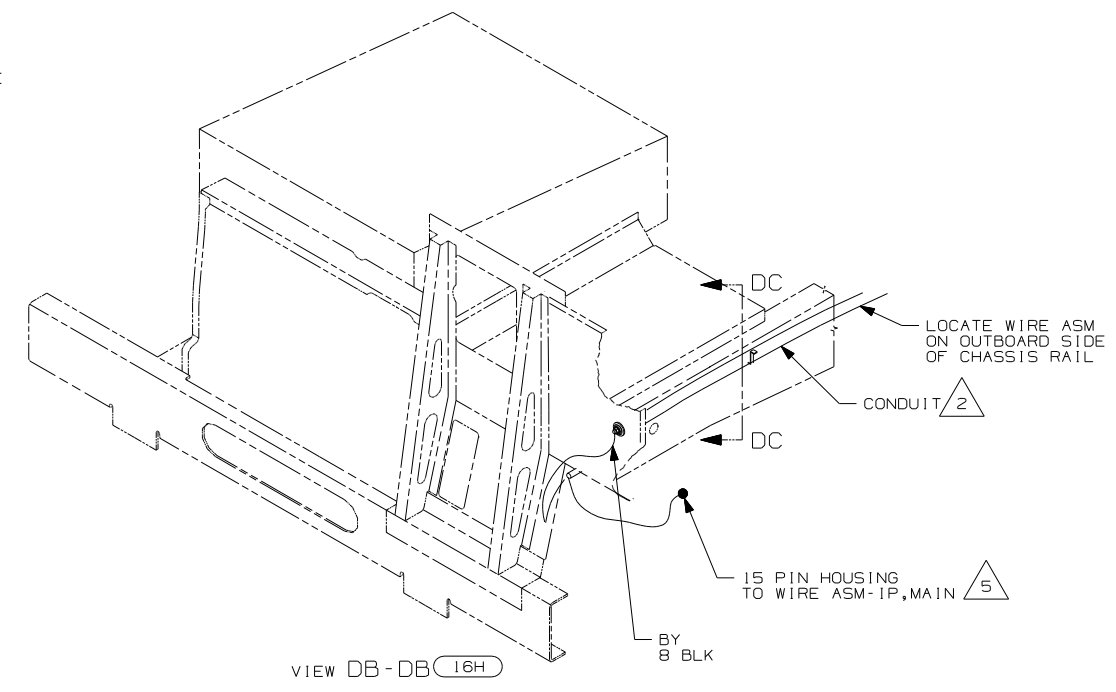
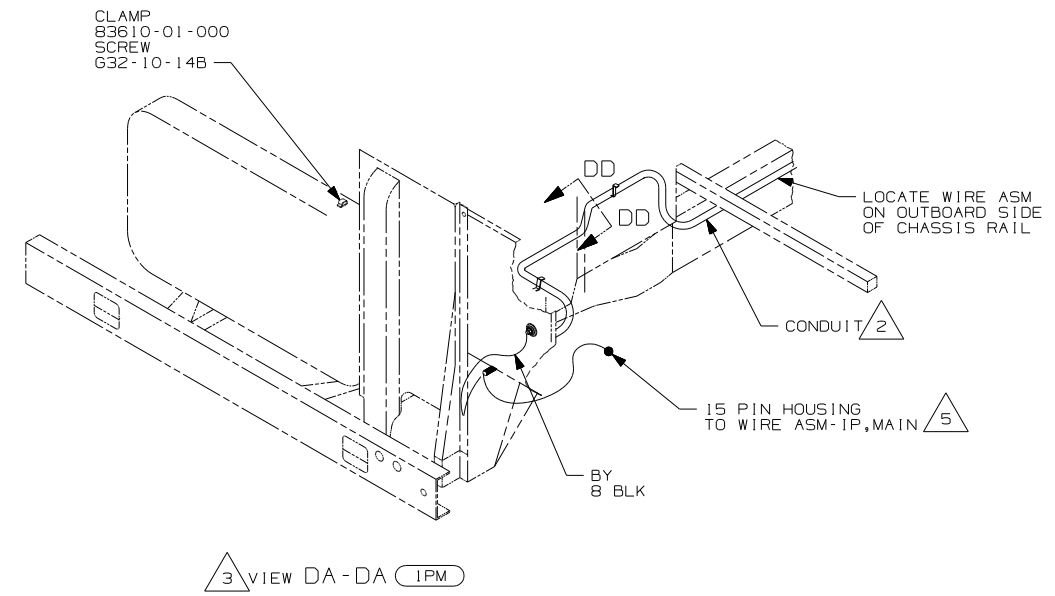
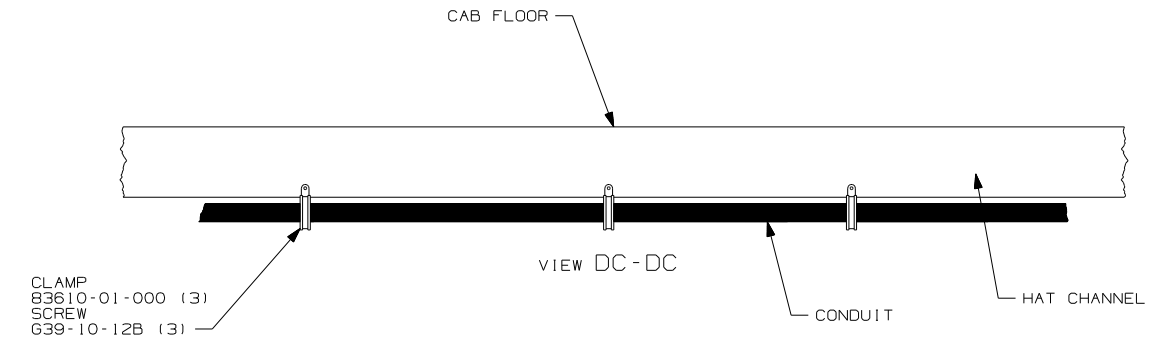
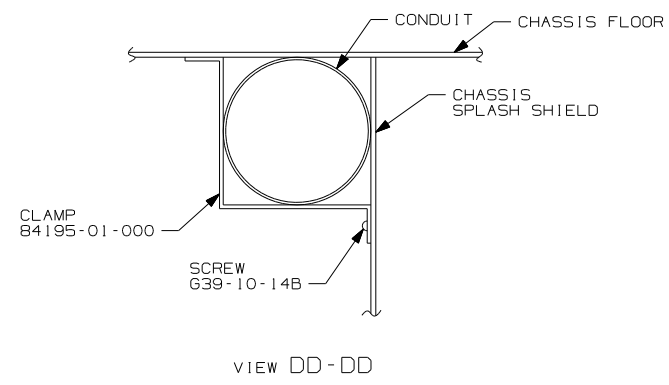
VIEW CA

- 4 BATTERY CABLES MUST BE INSTALLED TO STARTER MOTOR BEFORE ENGINE WIRING HARNESS AND ROUTED IN SUCH A MANNER AS TO PREVENT ANY POSSIBLE DEGRADATION FROM THE EXHAUST SYSTEM.
- 3 SEE CHASSIS ELECTRICAL BOX FOR ADDITIONAL INFORMATION.
- 2 TRIM CABLE TO 500MM, ADD TERMINALS 8348-01-000 (2), INCLUDE ALL SMALL GROUND WIRES.
- 1 USE TWO NUTS HERE TO ACCOUNT FOR BATTERY HEIGHT DIFFERENCE.

NOTES:

- 16H FORD CHASSIS 18,000#/V10 ENG
- 1PM WORKHORSE CHASSIS-18,000LB.
- 265 CODES/STANDARDS-CSA/CMVSS
- 1B1 CODES/STANDARDS USA

FIRST USED	05 D33L
TITLE	DO NOT SCALE DRAWING
TITLE	WIRING INSTL-CHASSIS
SHEET 3	PART NO 148438



- 5 ROUTE WIRE THRU HOLE IN CAB FLOOR.
4. CONNECT CABLES TO COACH SIDE OF BATTERY DISCONNECT WHEN BATTERY DISCONNECT IS USED.
- 3 ALL GROUND WIRE TO BE COVERED WITH TUBING 8041-02-000.
- 2 NOTECOVER WITH CONDUIT 41953-10-000 AND 41953-11-000 AS REQUIRED.
1. CUT OFF EXCESS END OF WIRE TIE.
- NOTES:

FOR ELECTRICAL TORQUE SPECIFICATIONS SEE DWG NO. 128783-01-000

FOR ELECTRICAL CALLOUTS SEE DWG NO. 121339-01-000

- (16H) FORD CHASSIS 18,000#/V10 ENG
- (IPM) WORKHORSE CHASSIS-18,000LB.
- (265) CODES/STANDARDS-CSA/CMVSS
- (1B1) CODES/STANDARDS USA

FIRST USED	05 D33L
TITLE	DO NOT SCALE DRAWING
	WIRING INSTL-CHASSIS
SHEET 4	PART NO 148438