



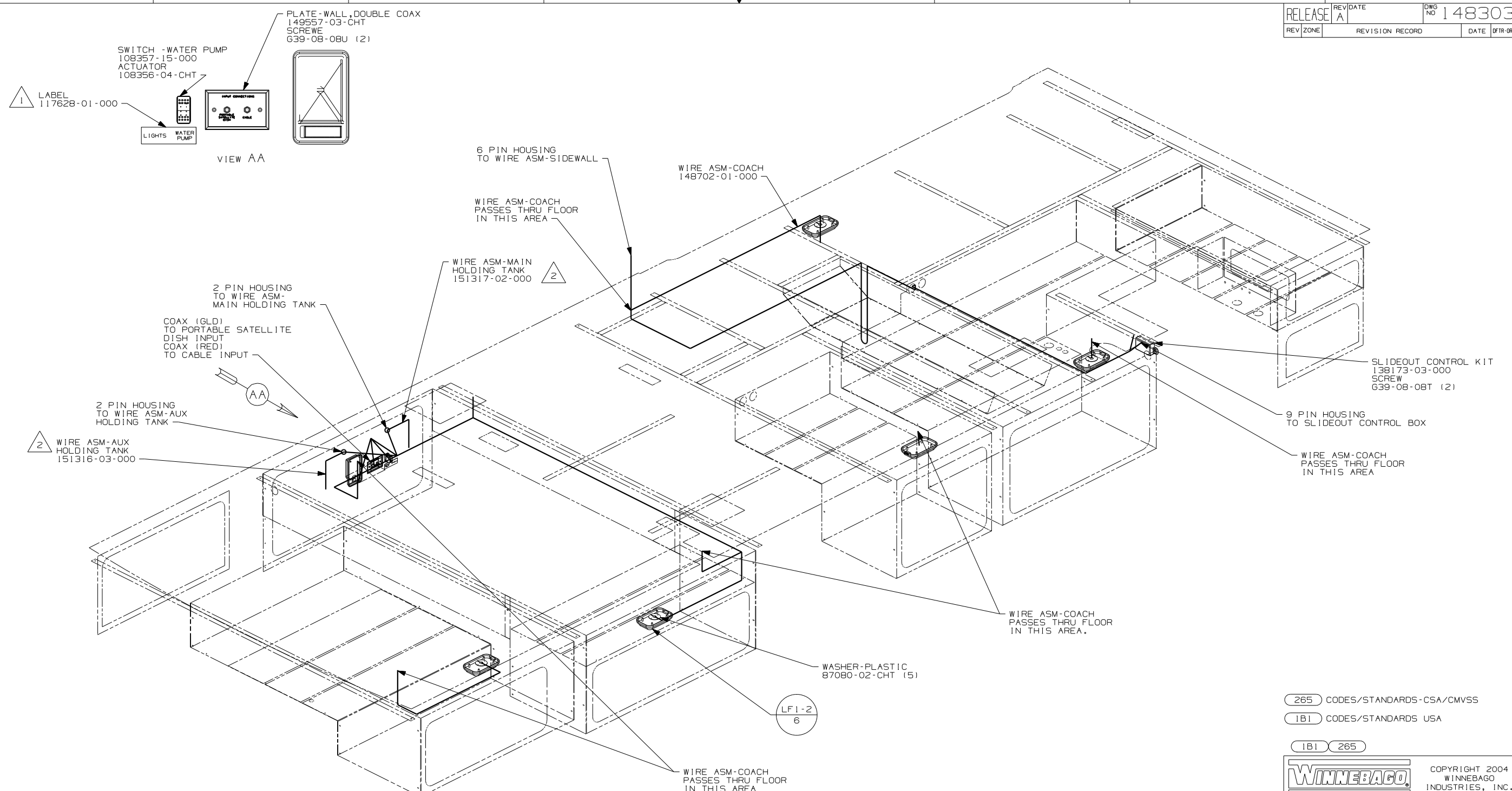
DANGER

Danger of electrical shock, burns or death. Always remove all power sources before attempting any repair, service or diagnostic work. Power can be present from shore power, generator, inverter or battery. All power sources must be disabled and secured before performing any service.



CAUTION

If you lack the skills, tools or equipment to perform diagnostic or repair work leave such work to an authorized Winnebago Industries dealer or other qualified shop.



3. ALL WIRES TO BE SECURED WITH CLAMP 10495 OR 10497 OR WIRE TIE 8343 OR 108046 EVERY 600MM, USE SCREW G67-XX-XXX OR G56-XX-XXX AS APPROPRIATE FOR INSTALLATION.

- 2 PLACE CROSS LOCATOR ON SENSORS OVER DIMPLES ON TANK.
- 1 CUT LABEL IN HALF AND USE PORTION THAT READS WATER PUMP.

NOTES:

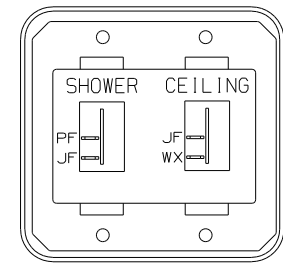
265 CODES/STANDARDS-CSA/CMVSS
 1B1 CODES/STANDARDS USA
 1B1 265

WINNEBAGO		COPYRIGHT 2004 WINNEBAGO INDUSTRIES, INC.	
DFTR	ORIG. DATE	ALL DIMENSIONS ARE IN MILLIMETERS	
CHKR		FIRST USED	
P.E.		05 D30B	
M.E.			
DSNR			
UNSPECIFIED TOLERANCES ARE:		MATERIAL:	
WHOLE DIM (X)	: 1		
ONE-PLACE (X.X)	: 1.5		
TWO-PLACE (X.XX)	: 0.50		
ANGLE	: 1°		
THIRD ANGLE PROJECTION		DO NOT SCALE DRAWING	
TITLE: WIRING INSTL-BODY, 12V			
SHEET 1 OF 4	PART NO	148303	
REF: 148303 1 7/9/2004			

FOR ELECTRICAL
TORQUE
SPECIFICATIONS
SEE DWG NO.
128783-01-000



FOR ELECTRICAL
CALLOUTS
SEE DWG NO.
121339-01-000



SWITCH-ROCKER
135740-01-CHT (2)
SWITCH-BASE
135741-02-CHT
SWITCH-BEZEL
135742-15-CHT
SCREW
G11-08-08U (4)

DETAIL BA

LIGHT-READING
132427-01-CHT (2)
SCREW
G13-06-16U (6)

LAMP-READING
149590-01-CHT
SCREW
G11-08-16J (2)

WIRE ASM-OVHD
148704-01-000

LAMP
93575-12-CHT
BULB
117805-01-000 (2)
CONNECTOR
58028-01-000 (2)
SCREW
G11-06-10J (2)

SWITCH ASM-SLIDEOUT
138173-04-000
LABEL
116549-01-000

TV-COLOR 13" DC
86231-10-000
CABLE ASM-COAX
87105-01-009
BRACKET-TV
144819-01-CHT
SCREW
G67-10-12B (18)
BRACKET-Z W/HOLES
146783-01-CHT

WALLPLATE-TV
76319-27-000

SWITCH-TV
132180-01-CHT
SWITCH-PLATE
098351-14-CHT
SCREW
G11-06-16U (2)

SWITCH
DETAIL BB

PANEL-MONITOR
134940-06-CHT
SCREW
G11-08-08U (4)

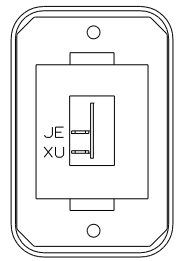
THERMOSTAT
135618-03-CHT
135618-01-CHT

RECEPTACLE-12V
132958-01-000
SCREW
G11-08-12B (2)
DETAIL BC

SWITCHES
DETAIL BA

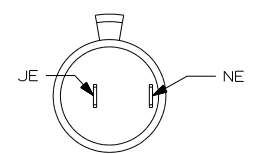
SWITCH
135740-01-CHT
BASE
135741-01-CHT
BEZEL
135742-07-CHT
SCREW
G11-08-08U (2)

WIRE ASM-COACH
PASSES THRU FLOOR
IN THIS AREA



SWITCH-ROCKER
135740-01-CHT
SWITCH-BASE
135741-01-CHT
SWITCH-BEZEL
135742-01-CHT
SCREW
G11-08-08U (2)

DETAIL BB



DETAIL BC

- (29J) AC HEAT PUMP-1
- (250) A/C ROOF AIR (1) 14,800 BTU
- (1JC) TV-13" W/VIDEO SELECTION SYS
- (265) CODES/STANDARDS-CSA/CMVSS
- (1B1) CODES/STANDARDS USA

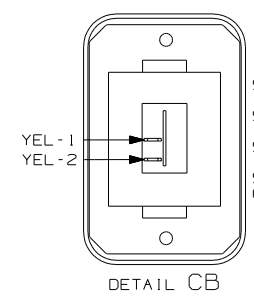
FIRST USED	05 D30B
TITLE	DO NOT SCALE DRAWING
TITLE	WIRING INSTL-BODY,12V
SHEET 2	PART NO 148303

2. ALL WIRES TO BE SECURED WITH CLAMP 10495 OR 10497 OR WIRE TIE 8343 OR 108046 EVERY 600MM, USE SCREW G67-XX-XXX OR G56-XX-XXX AS APPROPRIATE FOR INSTALLATION.

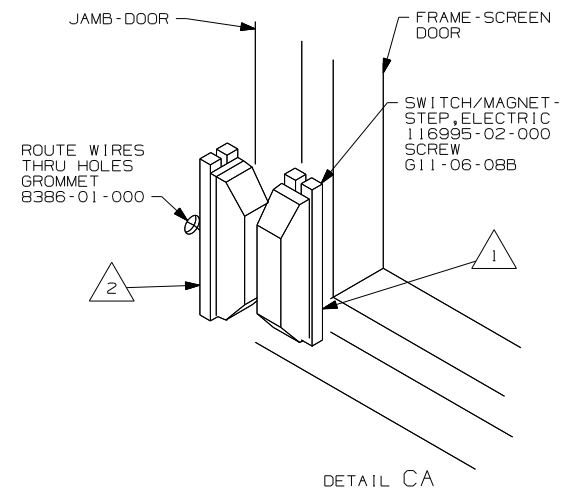
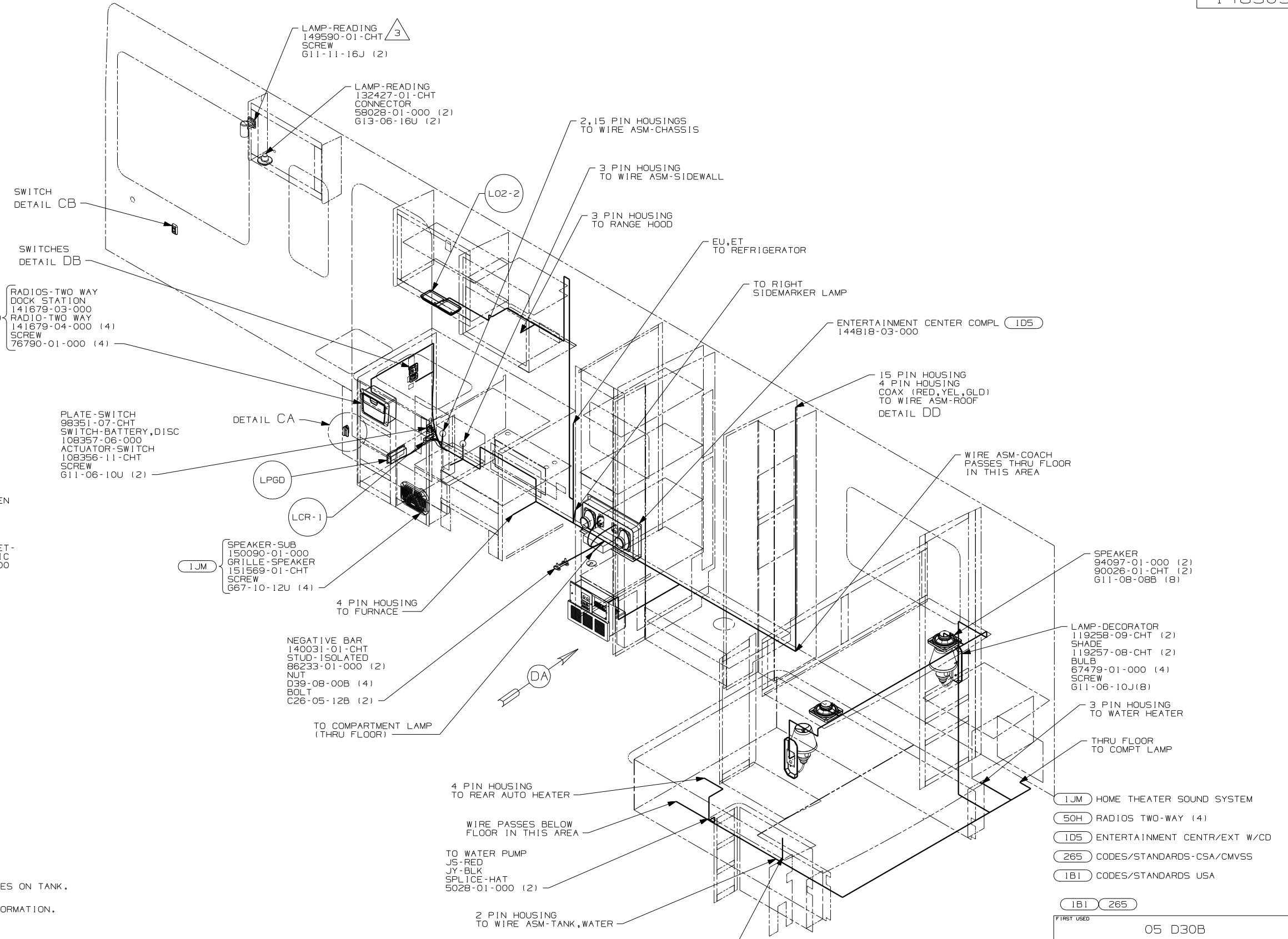
1 SEE WIRING INSTL-FRONT END FOR WIRING INFORMATION.

FOR ELECTRICAL TORQUE SPECIFICATIONS SEE DWG NO. 128783-01-000

FOR ELECTRICAL CALLOUTS SEE DWG NO. 121339-01-000



SWITCH-ROCKER
135740-01-CHT
SWITCH-BASE
135741-01-CHT
SWITCH-BEZEL
135742-01-CHT
SCREW
G11-08-08U (2)



5. ALL WIRES TO BE SECURED WITH CLAMP 10495 OR 10497 OR WIRE TIE 8343 OR 108046 EVERY 600MM, USE SCREW G67-XX-XXX OR G56-XX-XXX AS APPROPRIATE FOR INSTALLATION.
- 4 PLACE CROSS LOCATOR ON SENSORS OVER DIMPLES ON TANK.
- 3 SEE WIRING INSTL-FRONT END FOR WIRING INFORMATION.
- 2 MOUNT SWITCH AND SPACER TO BLOCK ON JAMB, ADJUST HEIGHT TO MATCH MAGNET.
- 1 MOUNT MAGNET USING PILOT HOLES IN SCREEN DOOR FRAME. MOUNT WITH MAGNET TOWARD SWITCH.

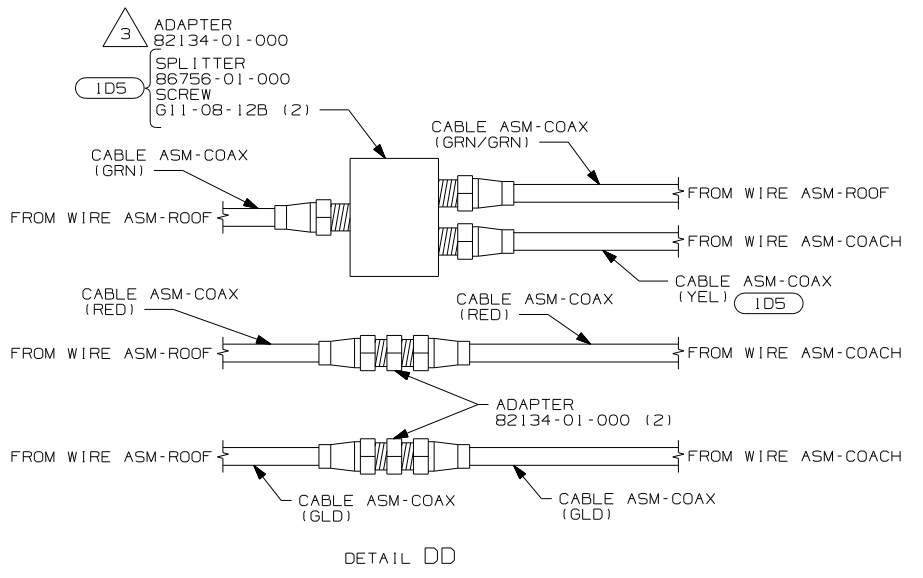
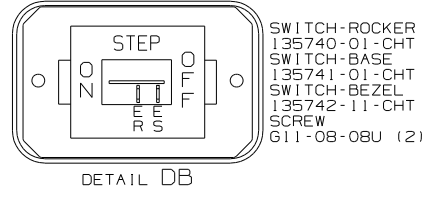
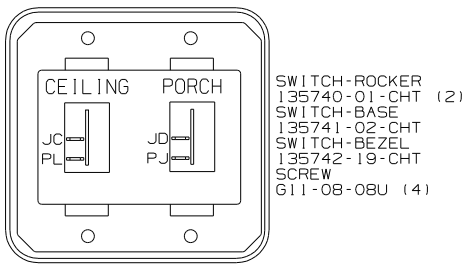
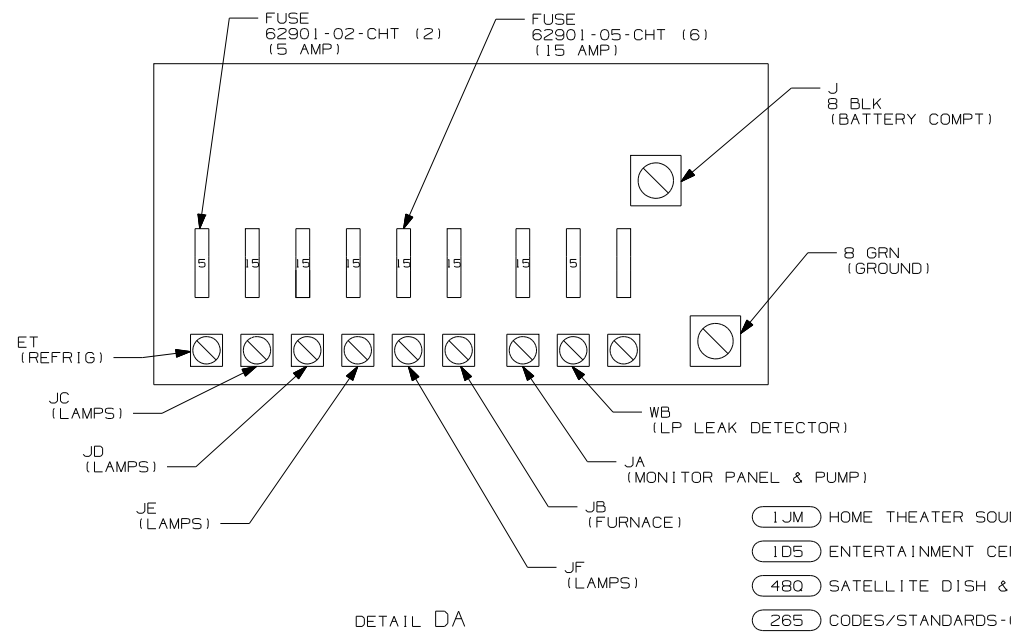
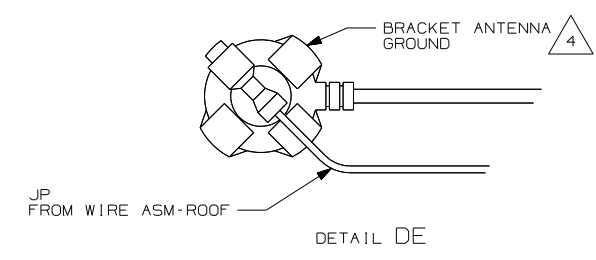
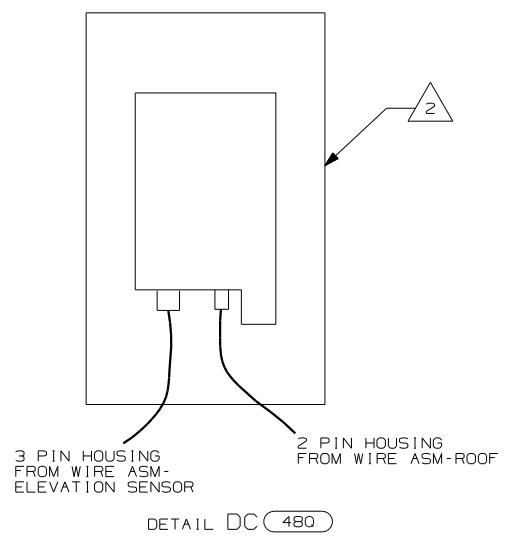
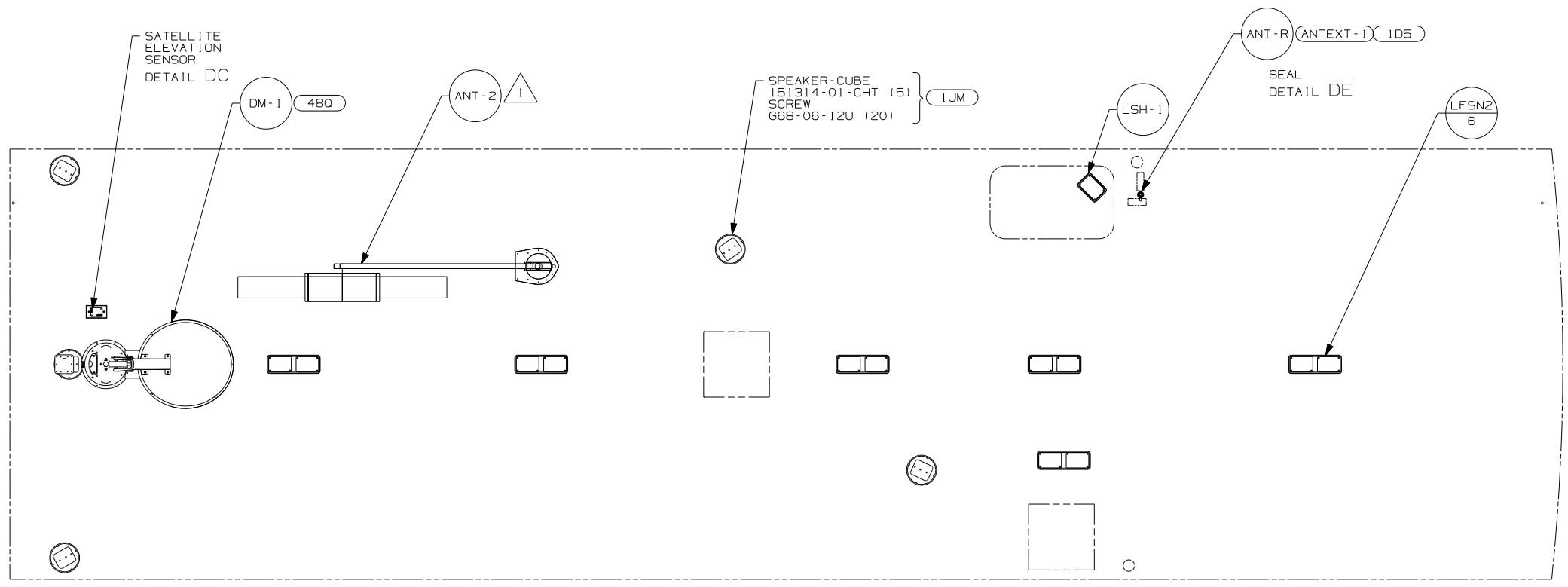
NOTES:

FOR ELECTRICAL TORQUE SPECIFICATIONS SEE DWG NO. 128783-01-000

FOR ELECTRICAL CALLOUTS SEE DWG NO. 121339-01-000

- (IJM) HOME THEATER SOUND SYSTEM
- (50H) RADIOS TWO-WAY (4)
- (ID5) ENTERTAINMENT CENTR/EXT W/CD
- (265) CODES/STANDARDS-CSA/CMVSS
- (1B1) CODES/STANDARDS USA

FIRST USED	05 D30B
DO NOT SCALE DRAWING	
TITLE:	WIRING INSTL-BODY,12V
SHEET 3	PART NO 148303



- NOTES:
- 4 WRAP BRACKET LEGS AROUND ANTENNA BASE.
 - 3 WITHOUT (ID5) USE ADAPTER AND CONNECT GRN COAX TO GRN/GRN COAX.
 - 2 SENSOR SUPPLIED WITH SATELLITE ASSEMBLY
 - 1 SEE DWG 76319-01-000 FOR INSTALLATION INSTRUCTIONS.

- (1JM) HOME THEATER SOUND SYSTEM
- (ID5) ENTERTAINMENT CENTR/EXT W/CD
- (480) SATELLITE DISH & ELEV.SENSOR
- (265) CODES/STANDARDS-CSA/CMVSS
- (1B1) CODES/STANDARDS USA

FIRST USED	05 D30B
TITLE	DO NOT SCALE DRAWING
	WIRING INSTL - BODY, 12V
SHEET 4	PART NO 148303