



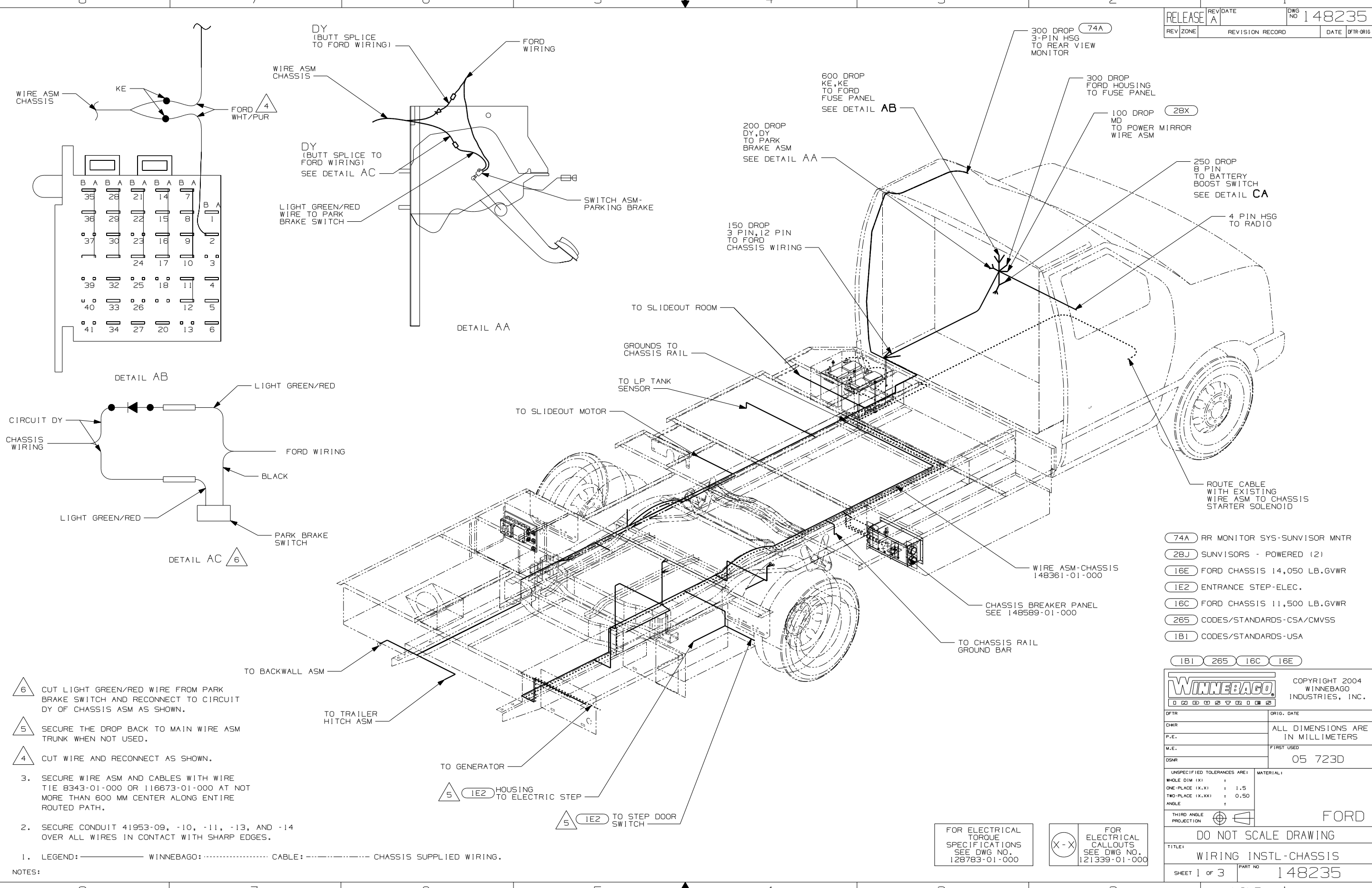
DANGER

Danger of electrical shock, burns or death. Always remove all power sources before attempting any repair, service or diagnostic work. Power can be present from shore power, generator, inverter or battery. All power sources must be disabled and secured before performing any service.



CAUTION

If you lack the skills, tools or equipment to perform diagnostic or repair work leave such work to an authorized Winnebago Industries dealer or other qualified shop.



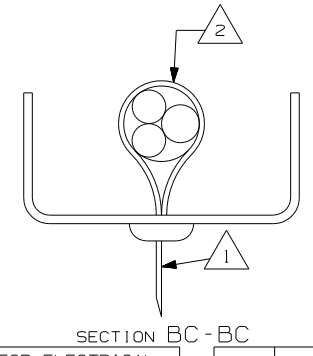
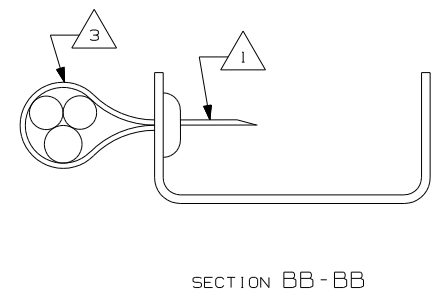
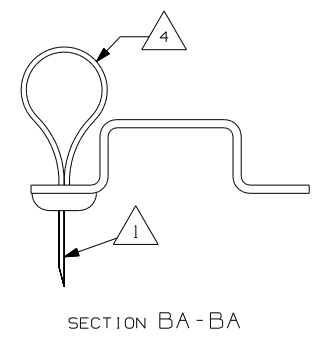
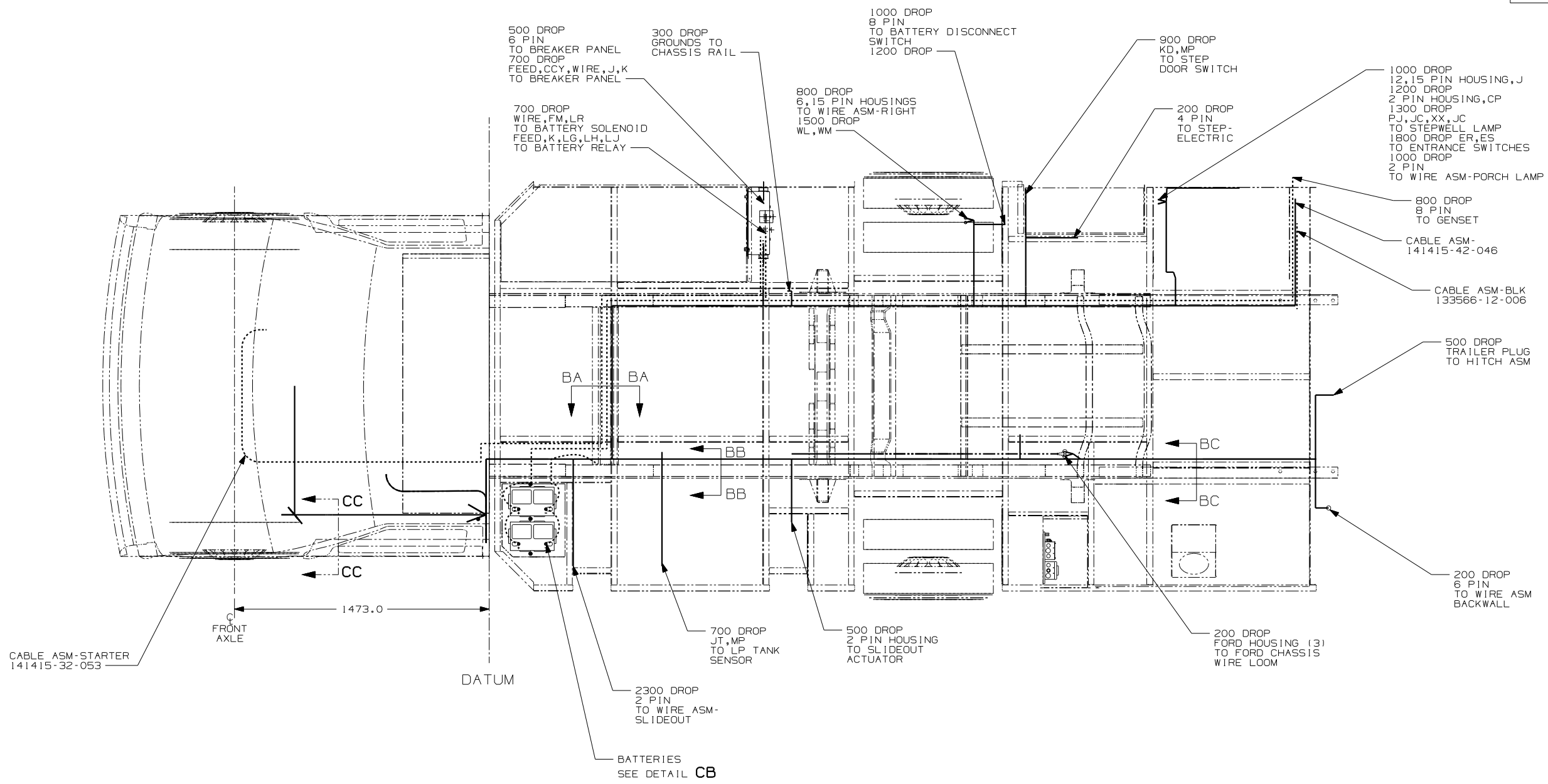
- △ 6 CUT LIGHT GREEN/RED WIRE FROM PARK BRAKE SWITCH AND RECONNECT TO CIRCUIT DY OF CHASSIS ASM AS SHOWN.
- △ 5 SECURE THE DROP BACK TO MAIN WIRE ASM TRUNK WHEN NOT USED.
- △ 4 CUT WIRE AND RECONNECT AS SHOWN.
- 3. SECURE WIRE ASM AND CABLES WITH WIRE TIE 8343-01-000 OR 116673-01-000 AT NOT MORE THAN 600 MM CENTER ALONG ENTIRE ROUTED PATH.
- 2. SECURE CONDUIT 41953-09, -10, -11, -13, AND -14 OVER ALL WIRES IN CONTACT WITH SHARP EDGES.
- 1. LEGEND: — WINNEBAGO: CABLE: - - - - - CHASSIS SUPPLIED WIRING.

FOR ELECTRICAL TORQUE SPECIFICATIONS SEE DWG NO. 128783-01-000

(X-X) FOR ELECTRICAL CALLOUTS SEE DWG NO. 121339-01-000

- 74A RR MONITOR SYS-SUNVISOR MNTR
- 28J SUNVISORS - POWERED (2)
- 16E FORD CHASSIS 14,050 LB.GVWR
- 1E2 ENTRANCE STEP-ELEC.
- 16C FORD CHASSIS 11,500 LB.GVWR
- 265 CODES/STANDARDS-CSA/CMVSS
- 1B1 CODES/STANDARDS-USA

WINNEBAGO		COPYRIGHT 2004 WINNEBAGO INDUSTRIES, INC.	
DFT	ORIG. DATE		
CHKR	ALL DIMENSIONS ARE IN MILLIMETERS		
P.E.	FIRST USED		
M.E.	05 723D		
DSNR			
UNSPECIFIED TOLERANCES ARE:		MATERIAL:	
WHOLE DIM (X)	:		
ONE-PLACE (X.X)	: 1.5		
TWO-PLACE (X.XX)	: 0.50		
ANGLE	:		
THIRD ANGLE PROJECTION		FORD	
DO NOT SCALE DRAWING			
TITLE: WIRING INSTL-CHASSIS			
SHEET 1 OF 3	PART NO	148235	
REF: NONE		1 5/24/2004	



- NOTES:
- 4 WIRES TO BE TIED TO CROSS MEMBER USING EXISTING HOLES.
 - 3 WIRES TO BE TIED TO TOP OF RAIL USING EXISTING HOLES.
 - 2 WIRES TO BE TIED TO INSIDE OF RAIL USING EXISTING HOLES.
 - 1 CUT OFF EXCESS END OF WIRE TIE.

- 1E2 ENTRANCE STEP-ELEC.
- 16C FORD CHASSIS 11,500 LB.GVWR
- 265 CODES/STANDARDS-CSA/CMVSS
- 1B1 CODES/STANDARDS-USA

FOR ELECTRICAL TORQUE SPECIFICATIONS SEE DWG NO. 128783-01-000

FOR ELECTRICAL CALLOUTS SEE DWG NO. 121339-01-000

FIRST USED	05 723D	FORD
DO NOT SCALE DRAWING		
TITLE:	WIRING INSTL-CHASSIS	
SHEET 2	PART NO	148235

22W BATTERY
63739-01-000 (2)
TIEDOWN
65451-05-000 (2)
BOLT
51387-06-000 (4)
NUT
D39-05-00B (4)
CLIP
44364-02-000 (4)
BOOT
77479-01-000
77479-02-000

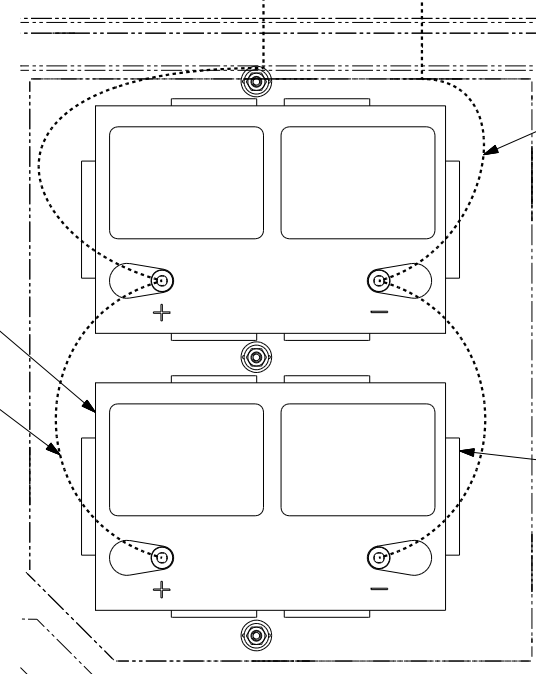
22W CABLE ASM-RED
133566-01-003

CABLE ASM-
141415-52-033
TO SOLENOID

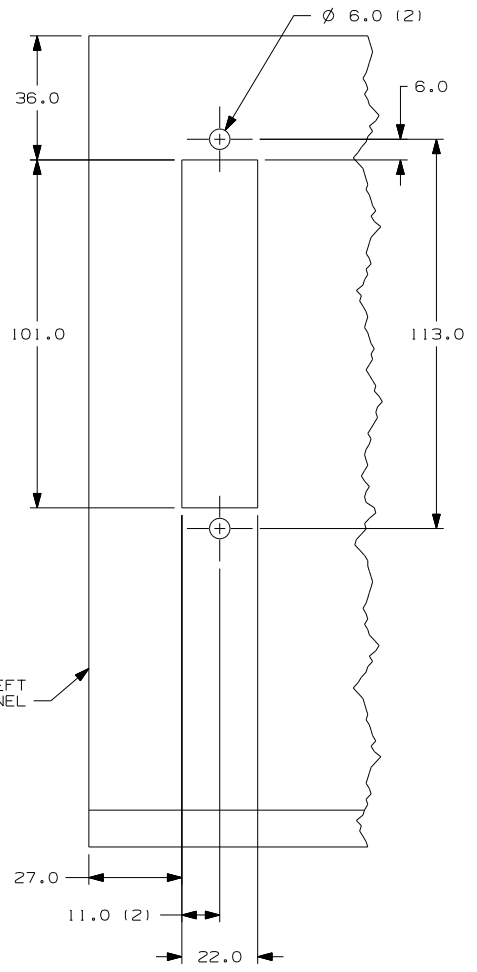
CABLE ASM-BLK
133566-12-006
TO GROUND BAR
BOLT
C26-05-00B
NUT
D39-05-00B

CABLE ASM-BLK 22W
133566-11-003

12X BATTERY
63739-01-000
TIEDOWN
65451-05-000
BOLT
51387-06-000 (2)
NUT
D39-05-00B (2)
CLIP
44364-02-000 (2)
BOOT
77479-02-000



VIEW CB



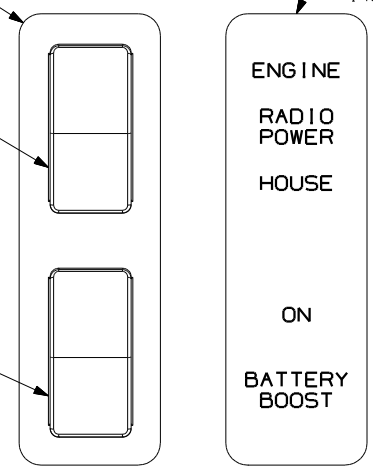
VIEW CC

PLATE-SWITCH
144363-12-CHT
NUT
112722-01-CHT (2)

SWITCH-RADIO
108357-08-000
ACTUATOR
108356-02-CHT

SWITCH-BATTERY BOOST
108357-09-000
ACTUATOR
108356-02-CHT

LABEL-SWITCH
145731-01-000



DETAIL CA

LOWER LEFT
DASH PANEL

- 22W BATTERY-SECOND
- 12X BATTERY-ONE
- 16C FORD CHASSIS 11,500 LB. GVWR
- 265 CODES/STANDARDS-CSA/CMVSS
- 1B1 CODES/STANDARDS-USA

FIRST USED	05 723D
DO NOT SCALE DRAWING	
TITLE	WIRING INSTL-CHASSIS
SHEET 3	PART NO 148235