



**DANGER**

**Danger of electrical shock, burns or death.** Always remove all power sources before attempting any repair, service or diagnostic work. Power can be present from shore power, generator, inverter or battery. All power sources must be disabled and secured before performing any service.

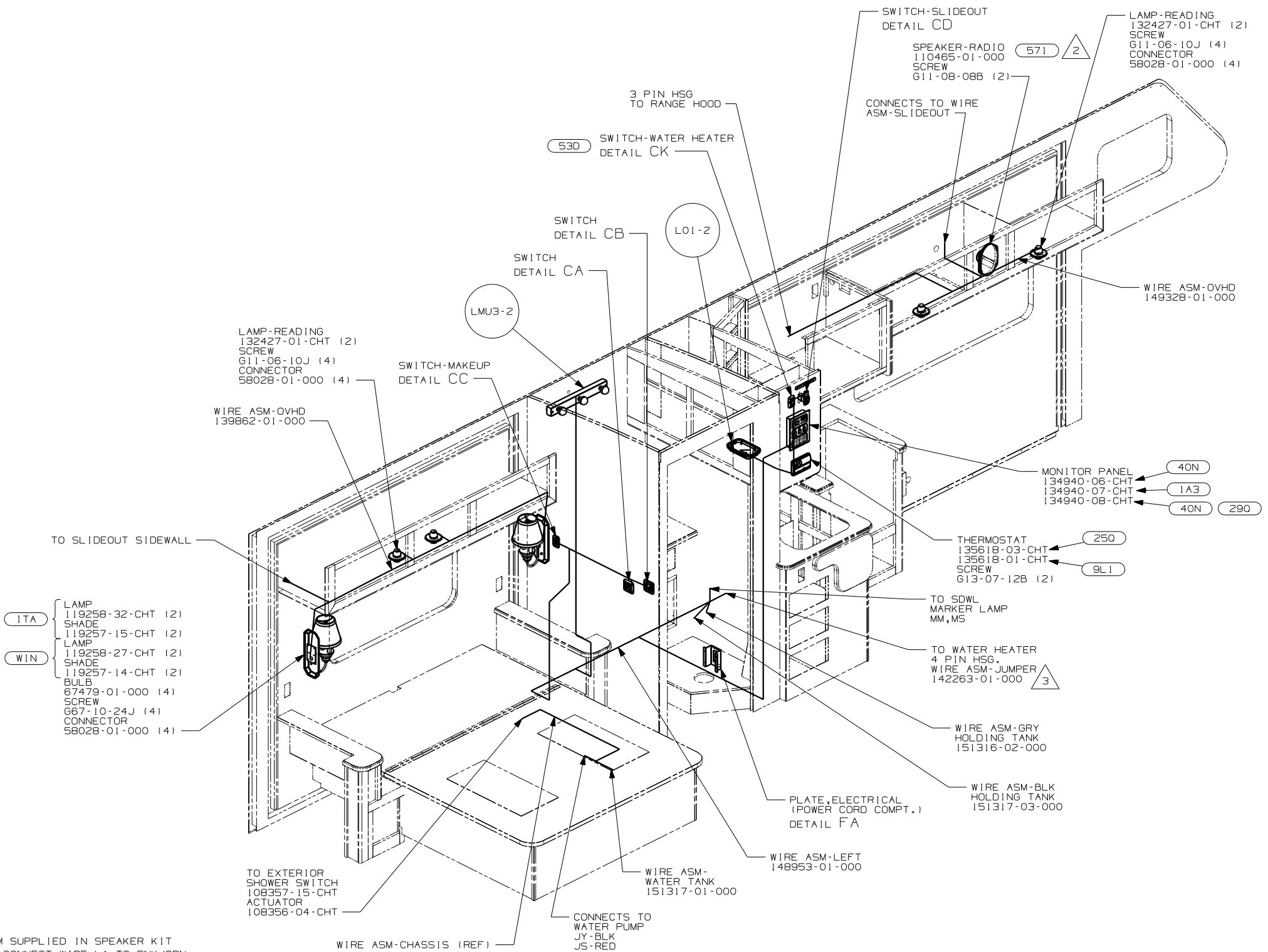


**CAUTION**

If you lack the skills, tools or equipment to perform diagnostic or repair work leave such work to an authorized Winnebago Industries dealer or other qualified shop.

DRAWING NO.	PRODUCT
148949-01	WINNEBAGO
148949-02	ITASCA

RELEASE	REV/DATE	DWG NO
A		148949
REV ZONE	REVISION RECORD	DATE DFR-0R16



- (ITA) LAMP 119258-32-CHT (2)
- SHADE 119257-15-CHT (2)
- (WIN) LAMP 119258-27-CHT (2)
- SHADE 119257-14-CHT (2)
- BULB 67479-01-000 (4)
- SCREW 667-10-24J (4)
- CONNECTOR 58028-01-000 (4)

- (1A3) GENERATOR WITHOUT
- (290) SOLAR PANEL-10 WATT
- (571) RADIO SPEAKERS
- (53D) WTR HTR-6GAL/ELE/LP/MOTOR AID
- (9L1) HOME COMFORT PLUS PACKAGE
- (40N) GEN-4.0KW-ONAN-GAS-MICROLITE
- (250) A/C ROOF AIR (1) 14,800 BTU
- (WIN) WINNEBAGO ONLY
- (ITA) ITASCA ONLY

- 3 WITHOUT 53D
- 2 USE HOUSING ASM SUPPLIED IN SPEAKER KIT 110465-01-000. CONNECT WIRE LA TO PNK/GRN OR PNK/BLU WIRE AND WIRE LC TO BLK/WHT WIRE.

1. ALL WIRES TO BE SECURED WITH CLAMP 10495-01-000 OR CLIP 80734-01-000 EVERY 600MM. USE SCREW 667-10-12B UNLESS OTHERWISE SPECIFIED.

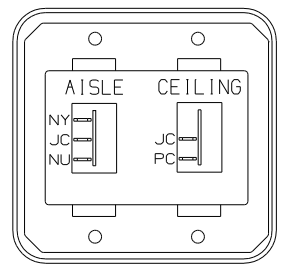
NOTES:

FOR ELECTRICAL TORQUE SPECIFICATIONS SEE DWG NO. 128783-01-000

FOR ELECTRICAL CALLOUTS SEE DWG NO. 121339-01-000

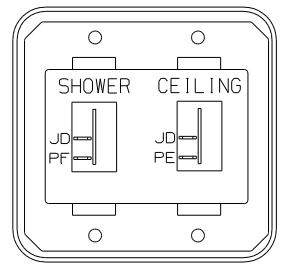
<b>WINNEBAGO</b>		COPYRIGHT 2004 WINNEBAGO INDUSTRIES, INC.	
DFTR	ORIG. DATE	ALL DIMENSIONS ARE IN MILLIMETERS	
CHKR		FIRST USED	
P.E.		05 430V	
M.E.		UNSPECIFIED TOLERANCES ARE:	
DSNR		MATERIAL:	
		WHOLE DIM (X)	:
		ONE-PLACE (X.X)	:
		TWO-PLACE (X.XX)	:
		ANGLE	:
		THIRD ANGLE PROJECTION	:
DO NOT SCALE DRAWING			
TITLE: WIRING INSTL-BODY, 12V			
SHEET 1 of 6	PART NO	148949	
REF: 146534-G   5/25/2004			





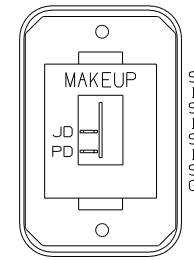
SWITCH-ROCKER  
135740-01-CHT  
135740-02-CHT  
SWITCH-BASE  
135741-02-CHT  
SWITCH-BEZEL  
135742-13-CHT  
SCREW  
G11-08-08U (4)

DETAIL CA



SWITCH-ROCKER  
135740-01-CHT (2)  
SWITCH-BASE  
135741-02-CHT  
SWITCH-BEZEL  
135742-15-CHT  
SCREW  
G11-08-08U (4)

DETAIL CB



SWITCH-ROCKER  
135740-01-CHT  
SWITCH-BASE  
135741-01-CHT  
SWITCH-BEZEL  
135742-08-CHT  
SCREW  
G11-08-08U (2)

DETAIL CC

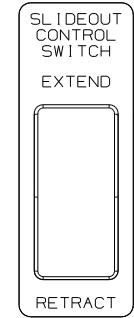
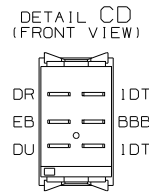


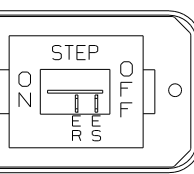
PLATE-SWITCH  
144363-10-CHT  
SWITCH  
108357-06-CHT  
ACTUATOR  
108356-02-CHT  
NUT  
D65-08-00B (2)  
LABEL  
116220-01-000

**WARNING** UNDERSTAND OPERATOR'S MANUAL BEFORE USING  
KEEP PEOPLE AND OBSTRUCTIONS CLEAR OF  
SLIDEOUT ROOM WHEN OPERATING TO AVOID  
INJURY AND/OR PROPERTY DAMAGE

LABEL-WARNING  
116549-01-000



DETAIL CD (FRONT VIEW)



DETAIL CE (1E2)

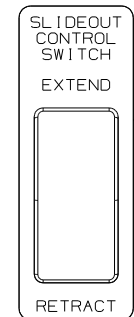
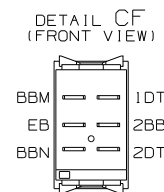


PLATE-SWITCH  
144363-10-CHT  
SWITCH  
108357-06-CHT  
ACTUATOR  
108356-02-CHT  
NUT  
D65-08-00B (2)  
LABEL  
116220-01-000

**WARNING** UNDERSTAND OPERATOR'S MANUAL BEFORE USING  
KEEP PEOPLE AND OBSTRUCTIONS CLEAR OF  
SLIDEOUT ROOM WHEN OPERATING TO AVOID  
INJURY AND/OR PROPERTY DAMAGE

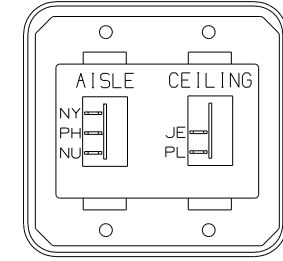
LABEL-WARNING  
116549-01-000



DETAIL CF (FRONT VIEW)

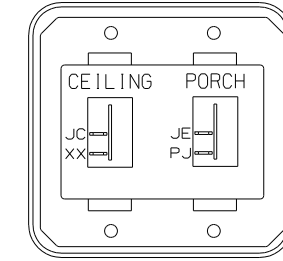


DETAIL CF (REAR VIEW)



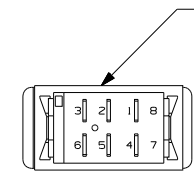
SWITCH-ROCKER  
135740-01-CHT  
135740-02-CHT  
SWITCH-BASE  
135741-02-CHT  
SWITCH-BEZEL  
135742-13-CHT  
SCREW  
G11-08-08U (4)

DETAIL CG

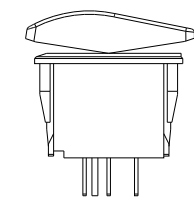


SWITCH-ROCKER  
135740-01-CHT (2)  
SWITCH-BASE  
135741-02-CHT  
SWITCH-BEZEL  
135742-19-CHT  
SCREW  
G11-08-08U (4)

DETAIL CH



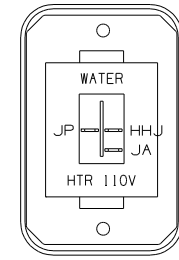
VIEW CJ (BACK VIEW)



VIEW CJ (SIDE VIEW)

PLATE SWITCH  
98351-07-CHT  
SWITCH-BATTERY  
DISCONNECT  
108357-06-000  
SCREW  
G11-06-10U (2)

ACTUATOR-SWITCH  
108356-11-CHT



SWITCH-ROCKER  
135740-06-CHT  
SWITCH-BASE  
135741-01-CHT  
SWITCH-BEZEL  
135742-35-CHT  
SCREW  
G11-08-08U (2)

DETAIL CK

NOTES:  
1 NOT USED WITH 42J

FOR ELECTRICAL  
TORQUE  
SPECIFICATIONS  
SEE DWG NO.  
128783-01-000

FOR ELECTRICAL  
CALLOUTS  
SEE DWG NO.  
121339-01-000

42J TV-24" COLOR, STEREO W/REMOTE  
1E2 ENTRANCE STEP-ELEC.

FIRST USED	05 430V
TITLE	DO NOT SCALE DRAWING
TITLE	WIRING INSTL-BODY, 12V
SHEET 3	PART NO 148949

SATELLITE ELEVATION SENSOR  
SEE DETAIL EB

SPEAKER (20C)  
148026-01-CHT (2)  
SCREW 611-08-12U (6)

LSH-1

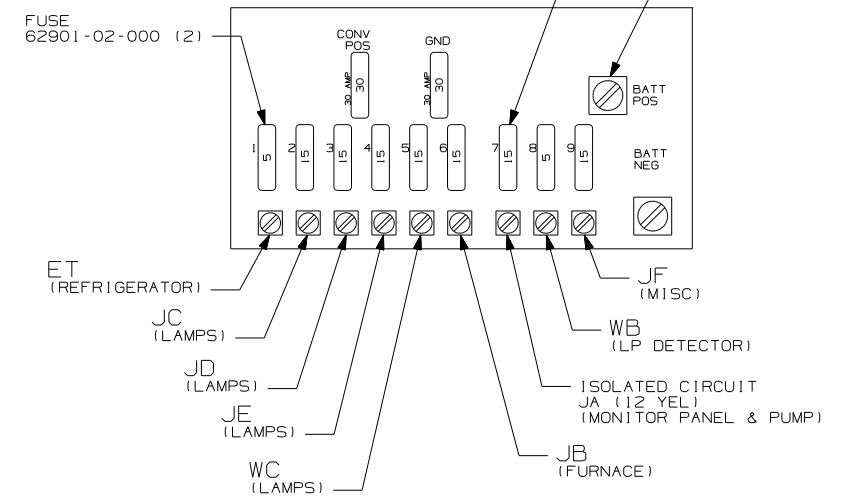
LFSN2  
3

LFSN2 (WIN)

FLU04 (ITA)

LF1N2

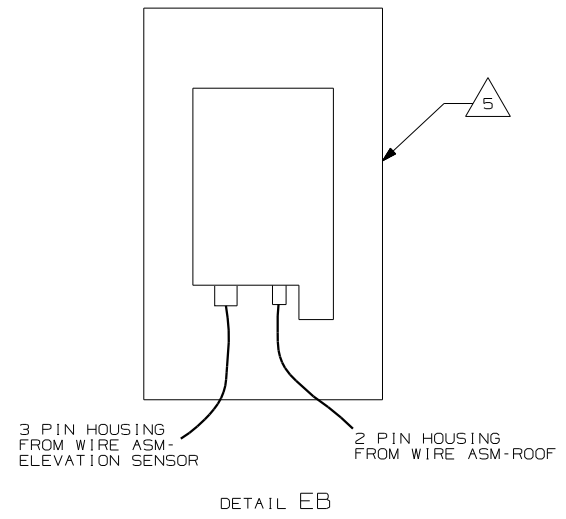
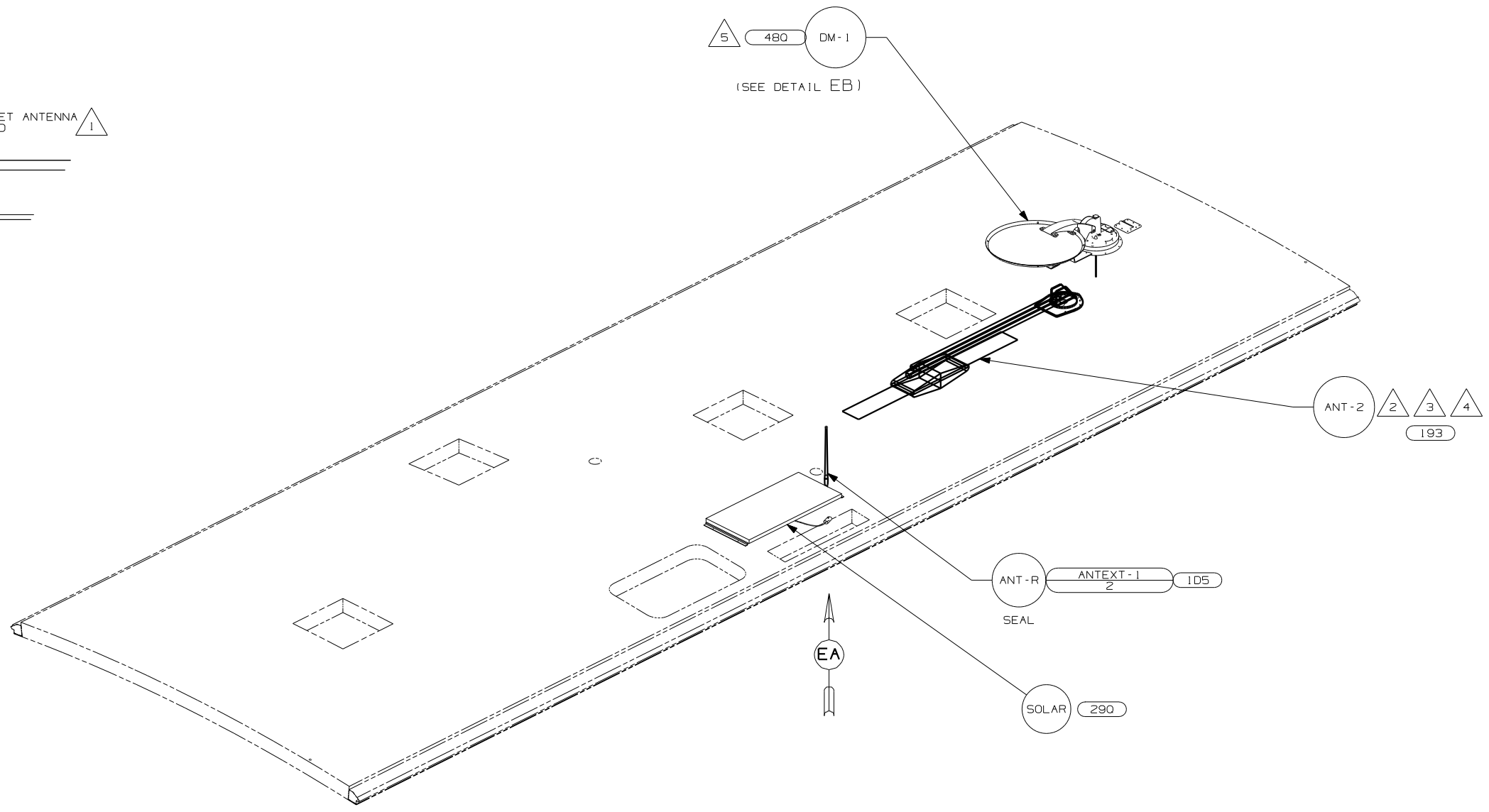
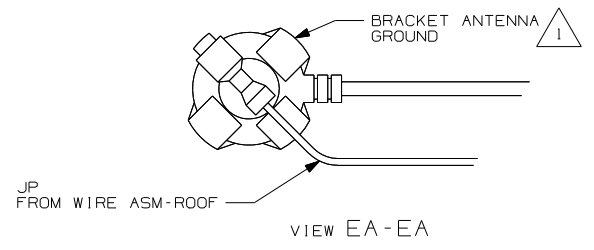
LF1-2  
6 (1)



- NOTES:
- 2 SPEAKER TO BE MOUNTED AT AN INWARD ANGLE 30 DEGREES FROM SIDEWALL.
  - 1 CENTER LAMP ON HOLE IN FLOOR.

- (20C) SOUND SYS. DLX. W/O-SURROUND
- (WIN) WINNEBAGO ONLY
- (ITA) ITASCA ONLY

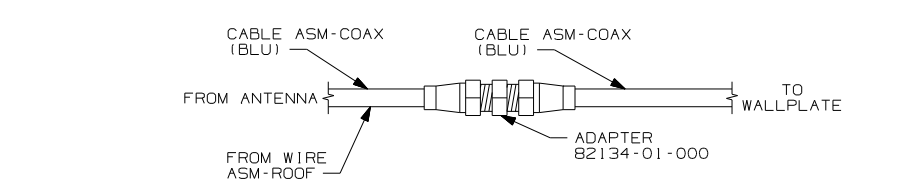
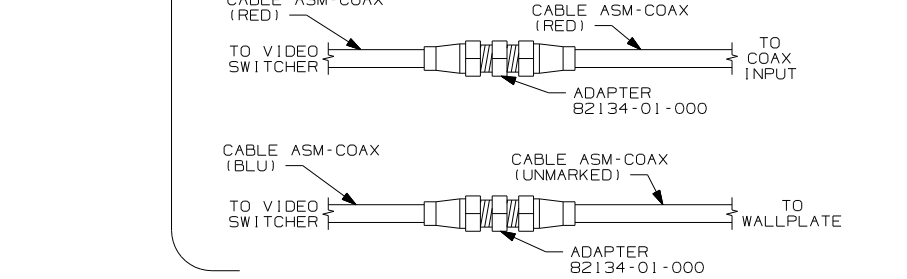
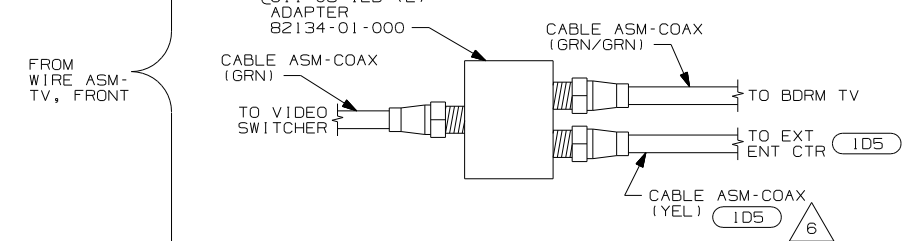
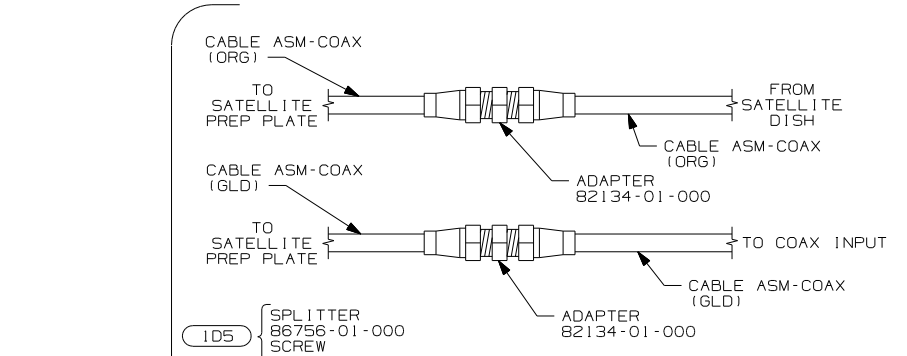
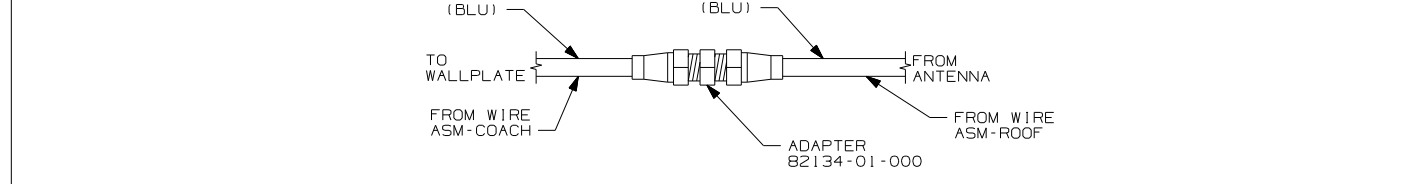
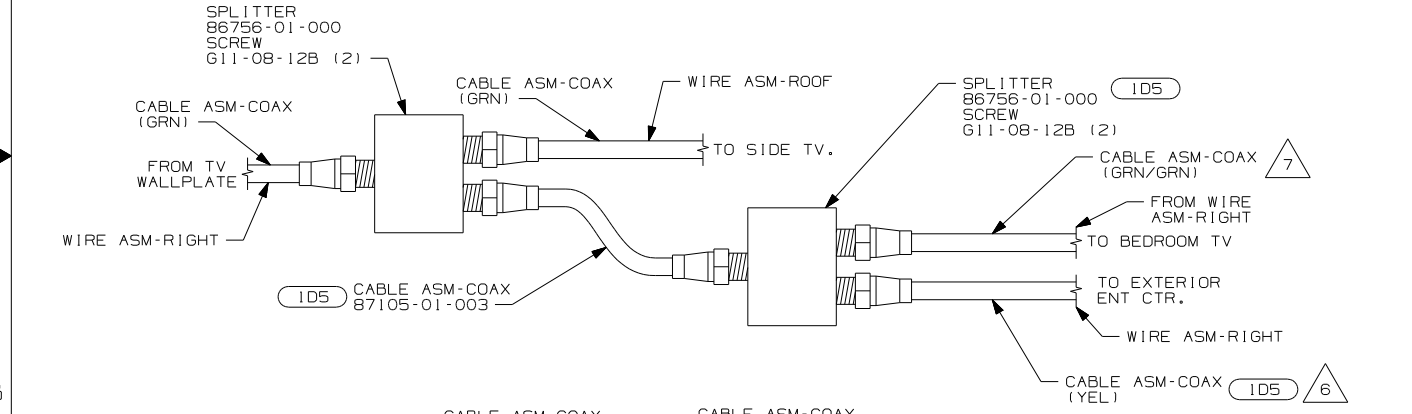
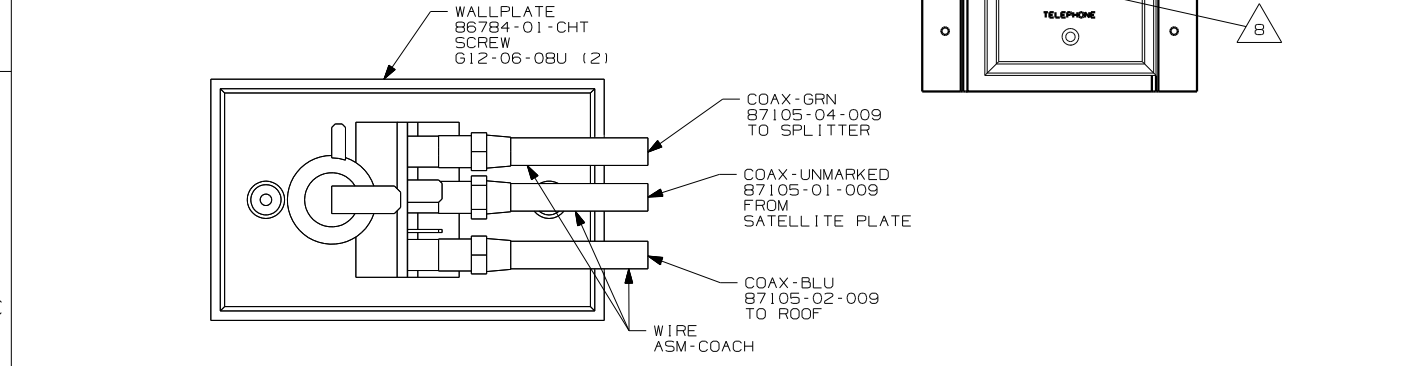
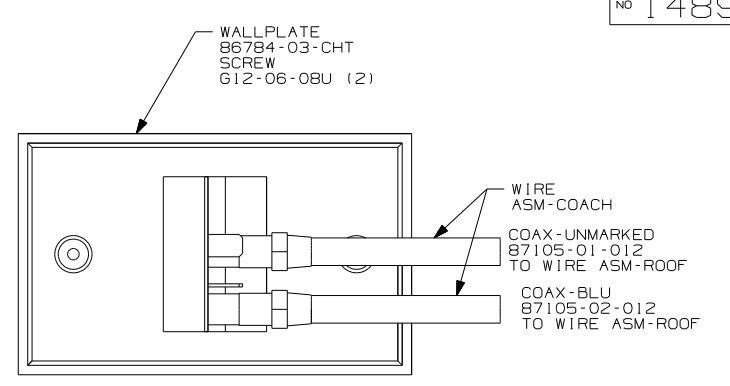
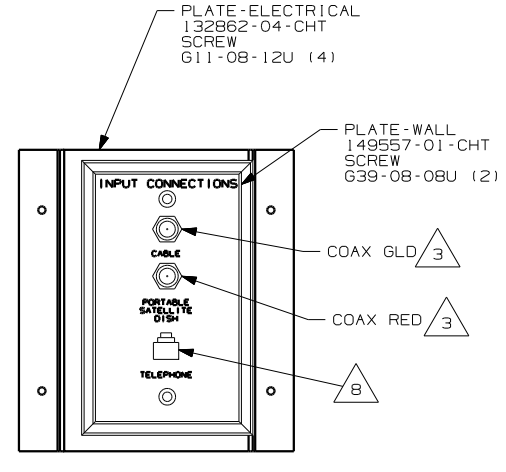
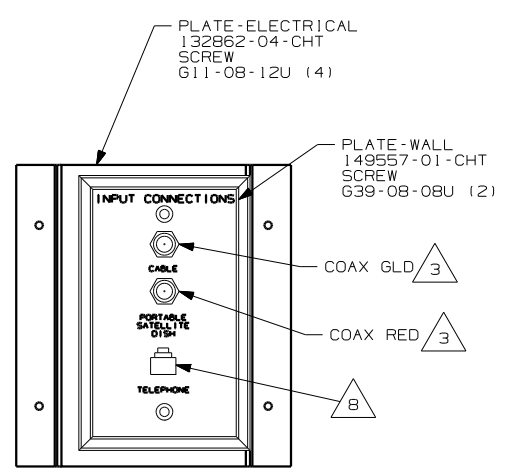
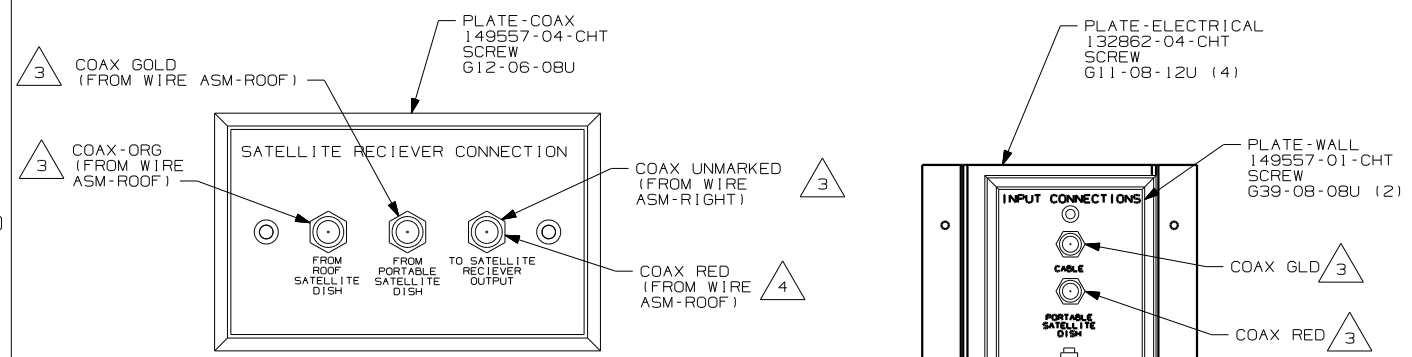
FIRST USED	05 430V
DO NOT SCALE DRAWING	
TITLE	WIRING INSTL-BODY, 12V
SHEET 4	PART NO 148949



- NOTES:
- 5 SENSOR SUPPLIED WITH SATELLITE ASSEMBLY.
  - 4 SEE DRAWING 76319-01-000 FOR INSTALLATION OF TV ANTENNA.
  - 3 LOCATE CLAMP TO RETAIN CABLE BUT NOT TO RESTRICT ANTENNA TRAVEL.
  - 2 ADD RUBBER BUMPER TO ROOF UNDER EACH END OF ANTENNA IN DOWN POSITION WHICH MAY COME INTO CONTACT WITH ROOF.
  - 1 WRAP BRACKET LEGS AROUND ANTENNA BASE.

- 105 ENTERTAINMENT CTR/EXT W/CD
- 480 SATELLITE DISH
- 193 TV ANTENNA-AMPLIFIED SYSTEM
- 290 SOLAR PANEL-10 WATT

FIRST USED	05 430V
DO NOT SCALE DRAWING	
TITLE	WIRING INSTL-BODY, 12V
SHEET 5	PART NO 148949



- NOTES:
- 8 CONNECT TELEPHONE WIRES TO MATCHING COLORS ON PLATE-WALL.
  - 7 COAX IS CONNECTED TO FIRST SPLITTER WITHOUT ID5
  - 6 COAX NOT USED WITHOUT ID5
  - 5 WITH SIDE ENTERRAINMENT CENTER, SEE WIRING INSTL-TV/VCR, SIDE FOR ADDITIONAL INFORMATION.
  - 4 CONNECT COAX TO FRONT SIDE OF WALLPLATE.
  - 3 CONNECT COAX TO BACKSIDE OF WALLPLATE.
  - 2 WITHOUT 42J
  - 1 WITH FRONT ENTERRAINMENT CENTER, SEE WIRING INSTL-TV/VCR, FRONT FOR ADDITIONAL INFORMATION.

DETAIL FA 2

DETAIL FA 42J 1

- 42J TV-24" COLOR, STEREO W/REMOTE
- ID5 ENTERTAINMENT CENTER/EXT W/CD
- 265 CODES/STANDARDS-CSA/CMVSS
- 1B1 CODES/STANDARDS USA

FIRST USED	05 430V
DO NOT SCALE DRAWING	
TITLE:	WIRING INSTL-BODY, 12V
SHEET 6	PART NO 148949