



DANGER

Danger of electrical shock, burns or death. Always remove all power sources before attempting any repair, service or diagnostic work. Power can be present from shore power, generator, inverter or battery. All power sources must be disabled and secured before performing any service.

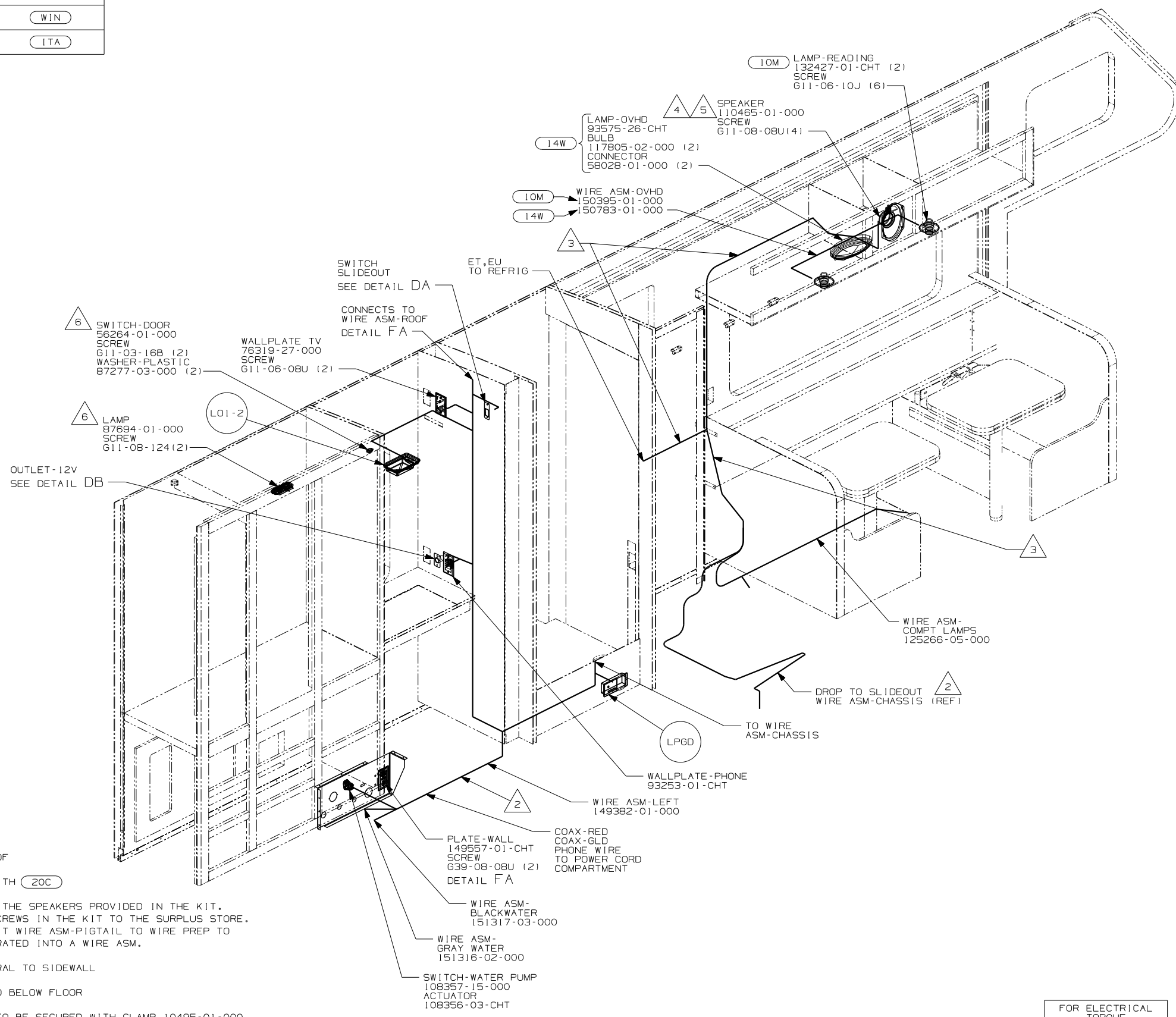


CAUTION

If you lack the skills, tools or equipment to perform diagnostic or repair work leave such work to an authorized Winnebago Industries dealer or other qualified shop.

DRAWING NO.	FEATURE
150685-01	(WIN)
150685-02	(ITA)

RELEASE	REV DATE	DWG NO
	A	150685
REV ZONE	REVISION RECORD	DATE
		DFT-0R16



- (ITA) ITASCA ONLY
- (WIN) WINNEBAGO ONLY
- (14W) DINETTE
- (10M) COUCH
- (20C) SOUND SYS. DLX. W/O-SURROUND

- 6 WIRE IN ROOF
- 5 NOT USED WITH (20C)
- 4 USE ONE OF THE SPEAKERS PROVIDED IN THE KIT. SEND THE SCREWS IN THE KIT TO THE SURPLUS STORE. SEND THE KIT WIRE ASM-PIGTAIL TO WIRE PREP TO BE INCORPORATED INTO A WIRE ASM.
- 3 WIRE INTEGRAL TO SIDEWALL
- 2 WIRE ROUTED BELOW FLOOR

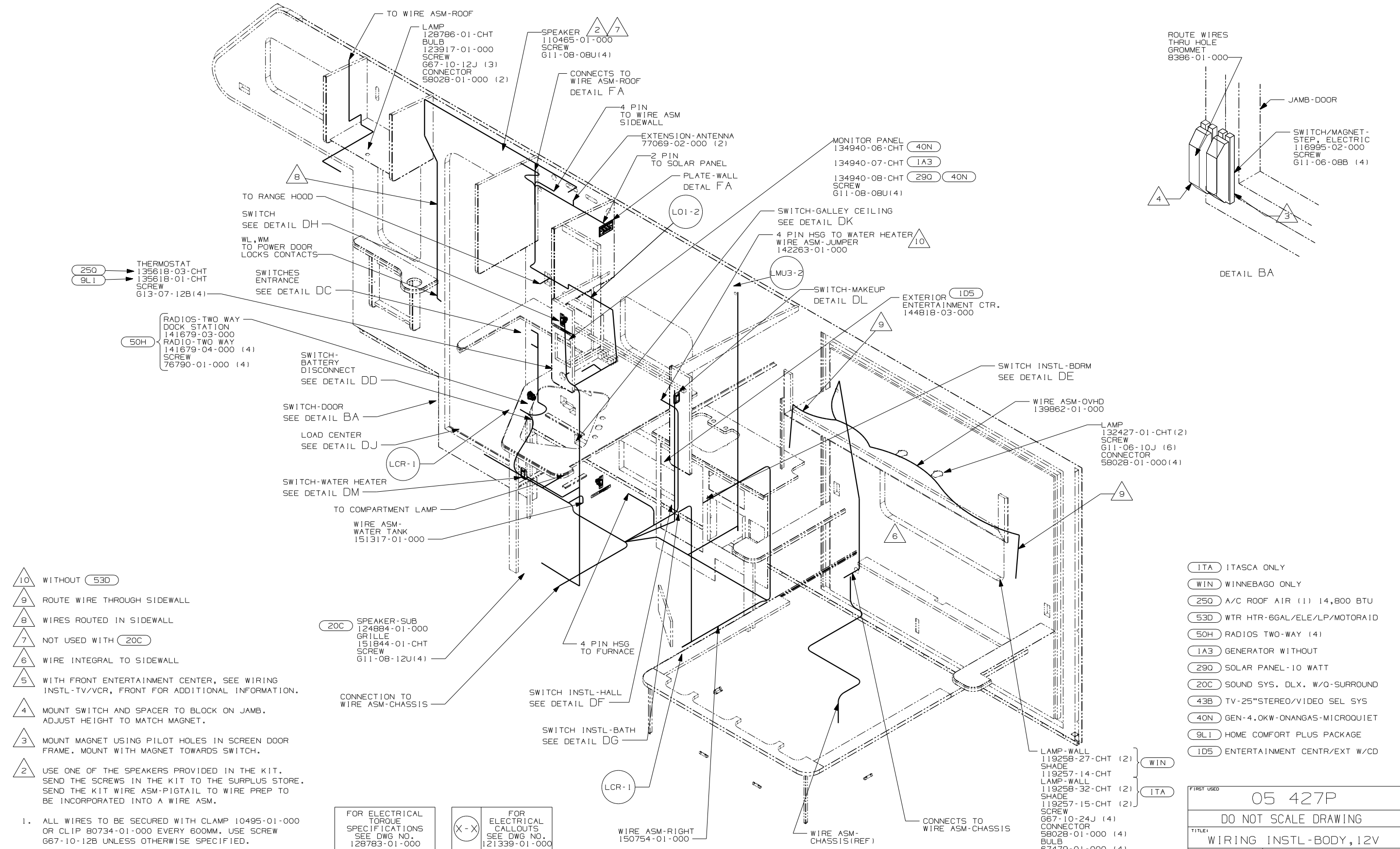
1. ALL WIRES TO BE SECURED WITH CLAMP 10495-01-000 OR CLIP 80734-01-000 EVERY 600MM. USE SCREW 667-10-12B UNLESS OTHERWISE SPECIFIED.

NOTES:

FOR ELECTRICAL TORQUE SPECIFICATIONS SEE DWG NO. 128783-01-000

FOR ELECTRICAL CALLOUTS SEE DWG NO. 121339-01-000

WINNEBAGO		COPYRIGHT 2004 WINNEBAGO INDUSTRIES, INC.
DFT	ORIG. DATE	
CHKR	ALL DIMENSIONS ARE IN MILLIMETERS	
P.E.		
M.E.	FIRST USED	05 427P
DSNR		
UNSPECIFIED TOLERANCES ARE:		MATERIAL:
WHOLE DIM (X)	:	
ONE-PLACE (X.X)	:	
TWO-PLACE (X.XX)	:	
ANGLE	:	
THIRD ANGLE PROJECTION		
DO NOT SCALE DRAWING		
TITLE: WIRING INSTL-BODY, 12V		
SHEET 1 of 6	PART NO	150685
REF: 146675 8/27/2004		



- 10 WITHOUT (53D)
- 9 ROUTE WIRE THROUGH SIDEWALL
- 8 WIRES ROUTED IN SIDEWALL
- 7 NOT USED WITH (20C)
- 6 WIRE INTEGRAL TO SIDEWALL
- 5 WITH FRONT ENTERTAINMENT CENTER, SEE WIRING INSTL-TV/VCR, FRONT FOR ADDITIONAL INFORMATION.
- 4 MOUNT SWITCH AND SPACER TO BLOCK ON JAMB. ADJUST HEIGHT TO MATCH MAGNET.
- 3 MOUNT MAGNET USING PILOT HOLES IN SCREEN DOOR FRAME. MOUNT WITH MAGNET TOWARDS SWITCH.
- 2 USE ONE OF THE SPEAKERS PROVIDED IN THE KIT. SEND THE SCREWS IN THE KIT TO THE SURPLUS STORE. SEND THE KIT WIRE ASM-PIGTAIL TO WIRE PREP TO BE INCORPORATED INTO A WIRE ASM.

(20C) SPEAKER-SUB 124884-01-000 GRILLE 151844-01-CHT SCREW 611-08-12U(4)

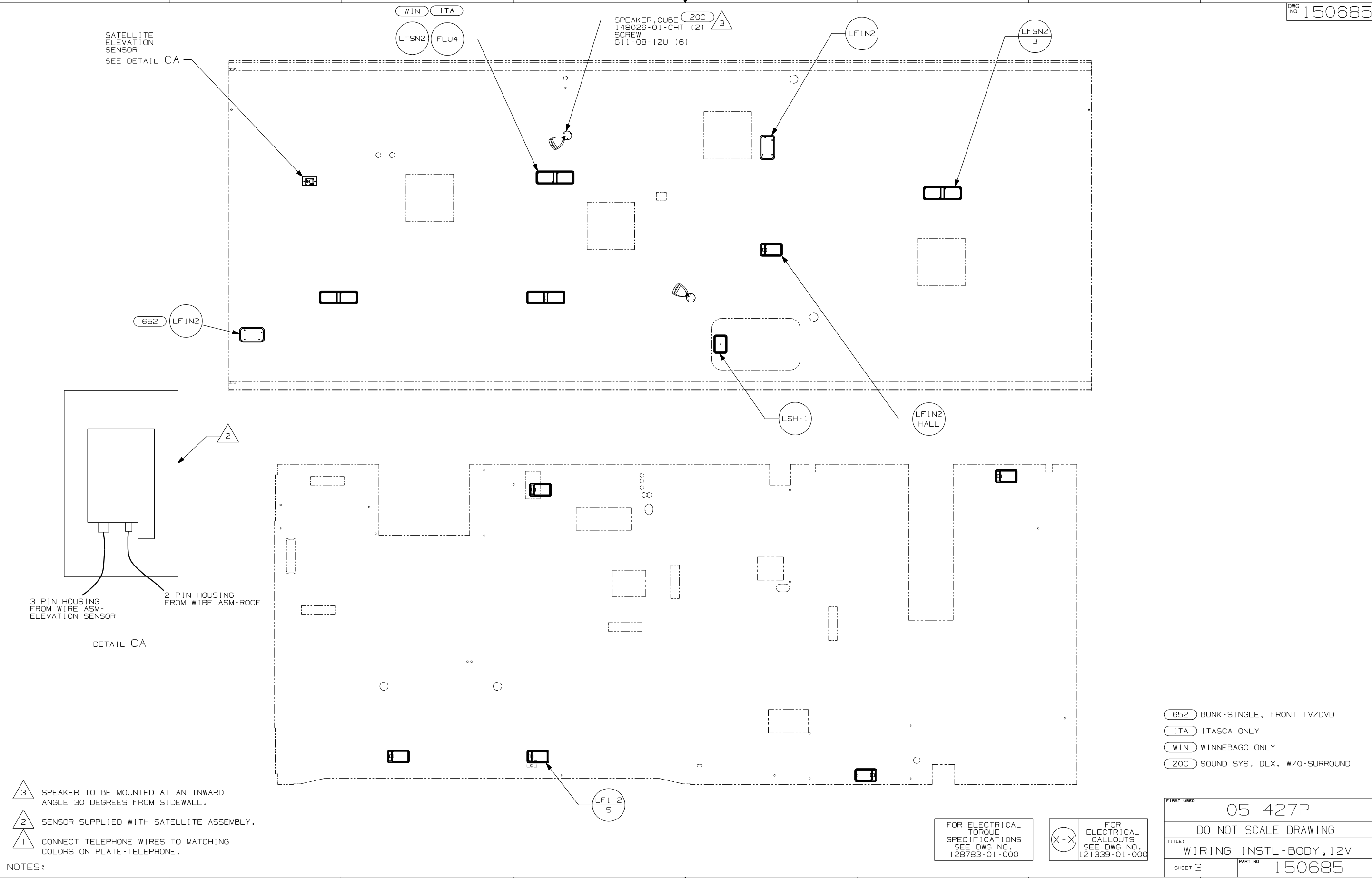
- (1TA) ITASCA ONLY
- (WIN) WINNEBAGO ONLY
- (250) A/C ROOF AIR (1) 14,800 BTU
- (53D) WTR HTR-6GAL/ELE/LP/MOTOR/ID
- (50H) RADIOS TWO-WAY (4)
- (1A3) GENERATOR WITHOUT
- (290) SOLAR PANEL-10 WATT
- (20C) SOUND SYS. DLX. W/O-SURROUND
- (43B) TV-25"STEREO/VIDEO SEL SYS
- (40N) GEN-4.0KW-ONANGAS-MICROQUIET
- (9L1) HOME COMFORT PLUS PACKAGE
- (1D5) ENTERTAINMENT CENTR/EXT W/CD

FOR ELECTRICAL TORQUE SPECIFICATIONS SEE DWG NO. 128783-01-000

FOR ELECTRICAL CALLOUTS SEE DWG NO. 121339-01-000

1. ALL WIRES TO BE SECURED WITH CLAMP 10495-01-000 OR CLIP 80734-01-000 EVERY 600MM. USE SCREW 667-10-12B UNLESS OTHERWISE SPECIFIED.

FIRST USED	05 427P
TITLE	DO NOT SCALE DRAWING
WIRING INSTL-BODY, 12V	
SHEET 2	PART NO 150685



SATELLITE ELEVATION SENSOR
SEE DETAIL CA

SPEAKER, CUBE (20C)
148026-01-CHT (2)
SCREW
611-08-12U (6)

652 LF1N2

LF1N2

LFSN2
3

LSH-1

LF1N2
HALL

LF1-2
5

3 PIN HOUSING FROM WIRE ASM-ELEVATION SENSOR
2 PIN HOUSING FROM WIRE ASM-ROOF

DETAIL CA

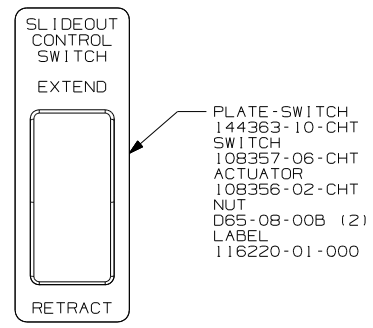
- (652) BUNK-SINGLE, FRONT TV/DVD
- (ITA) ITASCA ONLY
- (WIN) WINNEBAGO ONLY
- (20C) SOUND SYS. DLX. W/O-SURROUND

- 3 SPEAKER TO BE MOUNTED AT AN INWARD ANGLE 30 DEGREES FROM SIDEWALL.
- 2 SENSOR SUPPLIED WITH SATELLITE ASSEMBLY.
- 1 CONNECT TELEPHONE WIRES TO MATCHING COLORS ON PLATE-TELEPHONE.

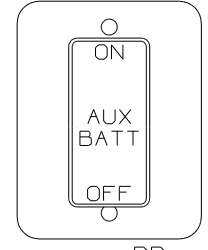
FOR ELECTRICAL TORQUE SPECIFICATIONS SEE DWG NO. 128783-01-000

(X-X) FOR ELECTRICAL CALLOUTS SEE DWG NO. 121339-01-000

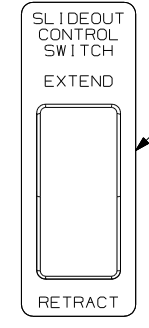
FIRST USED	05 427P
DO NOT SCALE DRAWING	
TITLE:	WIRING INSTL-BODY, 12V
SHEET 3	PART NO 150685



- PLATE-SWITCH 144363-10-CHT SWITCH 108357-06-CHT ACTUATOR 108356-02-CHT NUT D65-08-00B (2) LABEL 116220-01-000



- PLATE-SWITCH 98351-07-CHT SWITCH-BATTERY, DISC 108357-06-000 ACTUATOR-SWITCH 108356-11-CHT SCREW G11-06-10U (2)



- PLATE-SWITCH 144363-10-CHT SWITCH 108357-06-CHT ACTUATOR 108356-02-CHT NUT D65-08-00B (2) LABEL 116220-01-000

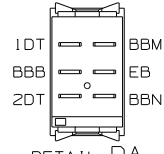
LABEL-WARNING 116549-01-000

WARNING UNDERSTAND OPERATOR'S MANUAL BEFORE USING KEEP PEOPLE AND OBSTRUCTIONS CLEAR OF SLIDEOUT ROOM WHEN OPERATING TO AVOID INJURY AND/OR PROPERTY DAMAGE

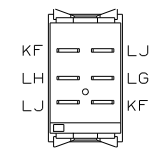
LABEL-WARNING 116549-01-000

WARNING UNDERSTAND OPERATOR'S MANUAL BEFORE USING KEEP PEOPLE AND OBSTRUCTIONS CLEAR OF SLIDEOUT ROOM WHEN OPERATING TO AVOID INJURY AND/OR PROPERTY DAMAGE

DETAIL DA (FRONT VIEW)

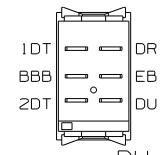


DETAIL DA (REAR VIEW)

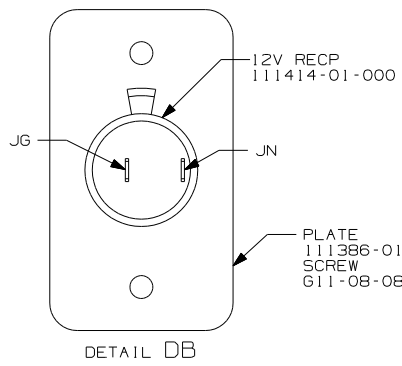


DETAIL DD (REAR VIEW)

DETAIL DH (FRONT VIEW)

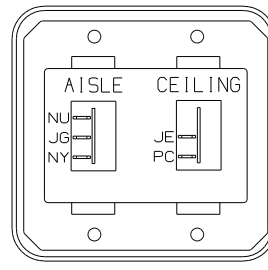


DETAIL DH (REAR VIEW)



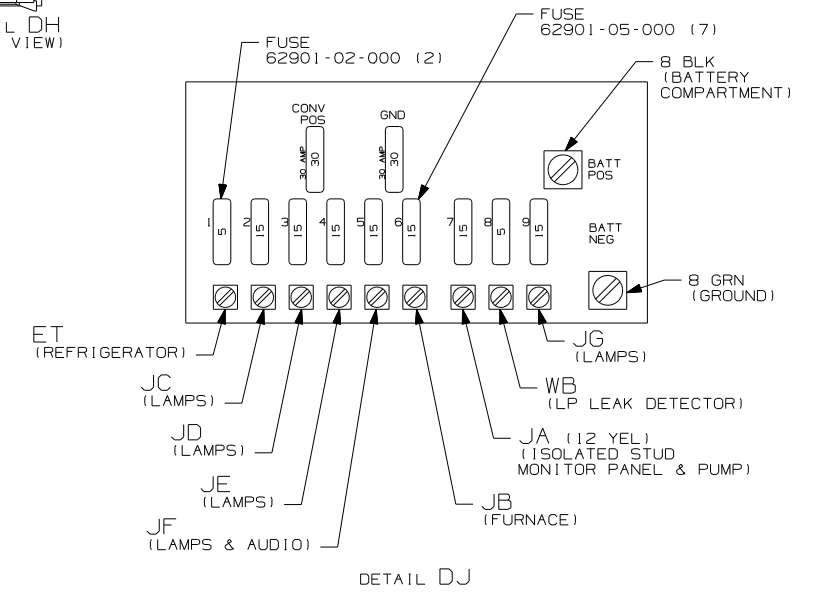
- PLATE 111386-01-CHT SCREW G11-08-08U (2)

DETAIL DB

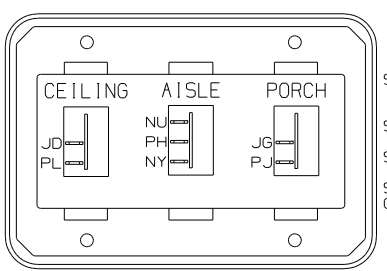


- SWITCH-ROCKER 135740-01-CHT 135740-02-CHT SWITCH-BASE 135741-02-CHT SWITCH-BEZEL 135742-13-CHT SCREW G11-08-08U (4)

DETAIL DE

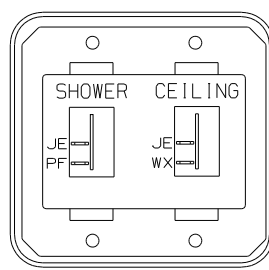


DETAIL DJ



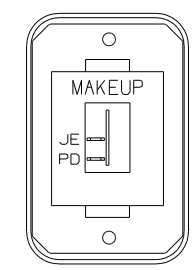
- SWITCH-ROCKER 135740-01-CHT 135740-02-CHT SWITCH-BASE 135741-03-CHT SWITCH-BEZEL 135742-26-CHT SCREW G11-08-08U (4)

DETAIL DC



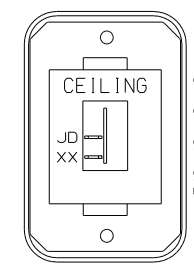
- SWITCH-ROCKER 135740-01-CHT 135740-02-CHT SWITCH-BASE 135741-02-CHT SWITCH-BEZEL 135742-15-CHT SCREW G11-08-08U (4)

DETAIL DF



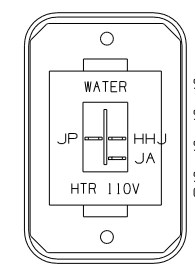
- SWITCH-ROCKER 135740-01-CHT SWITCH-BASE 135741-01-CHT SWITCH-BEZEL 135742-08-CHT SCREW G11-08-08U (2)

DETAIL DL



- SWITCH-ROCKER 135740-01-CHT SWITCH-BASE 135741-01-CHT SWITCH-BEZEL 135742-07-CHT SCREW G11-08-08U (2)

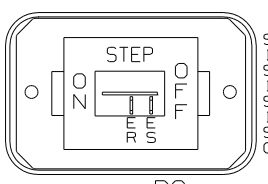
DETAIL DK



- SWITCH-ROCKER 135740-06-CHT SWITCH-BASE 135741-01-CHT SWITCH-BEZEL 135742-35-CHT SCREW G11-08-08U (2)

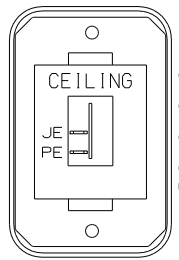
DETAIL DM

53D



- SWITCH-ROCKER 135740-01-CHT SWITCH-BASE 135741-01-CHT SWITCH-BEZEL 135742-11-CHT SCREW G11-08-08U (2)

DETAIL DC



- SWITCH-ROCKER 135740-01-CHT SWITCH-BASE 135741-01-CHT SWITCH-BEZEL 135742-07-CHT SCREW G11-08-08U (2)

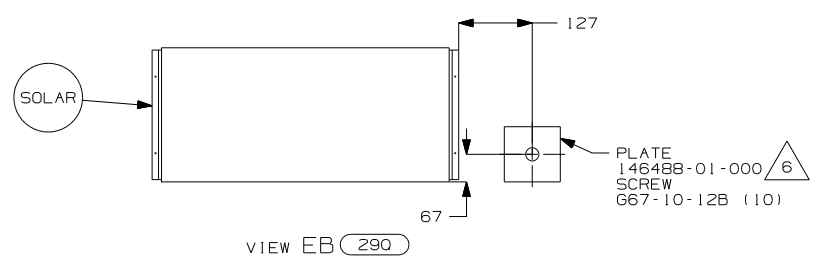
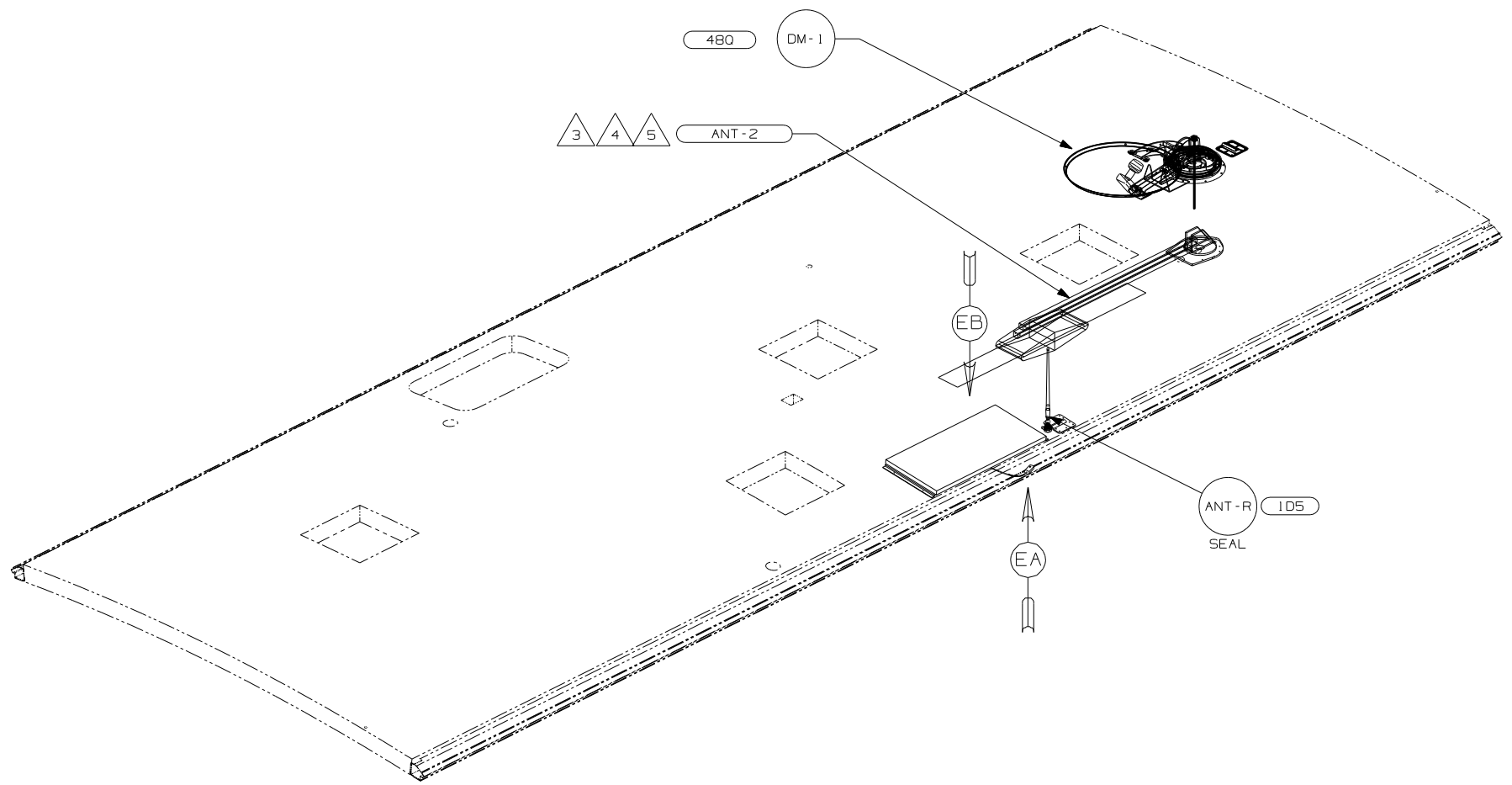
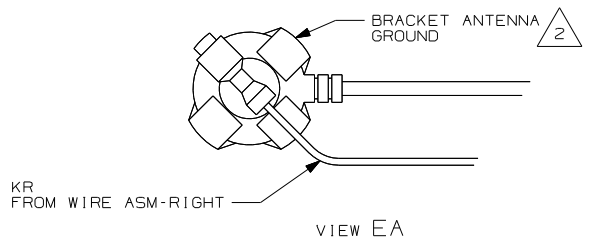
DETAIL DG

FOR ELECTRICAL TORQUE SPECIFICATIONS SEE DWG NO. 128783-01-000

FOR ELECTRICAL CALLOUTS SEE DWG NO. 121339-01-000

53D WTR HTR-6GAL/ELE/LP/MOTORAID

FIRST USED	05 427P
TITLE	DO NOT SCALE DRAWING
TITLE	WIRING INSTL-BODY, 12V
SHEET 4	PART NO 150685
1 8/27/2004	



- 6 SEAL
- 5 ADD RUBBER BUMPER TO ROOF UNDER EACH END OF ANTENNA IN DOWN POSITION WHICH MAY COME INTO CONTACT WITH ROOF.
- 4 LOCATE CLAMP TO RETAIN CABLE BUT NOT TO RESTRICT ANTENNA TRAVEL.
- 3 SEE DRAWING 76319-01-000 FOR INSTALLATION OF TV ANTENNA.
- 2 WRAP BRACKET LEGS AROUND ANTENNA BASE.

1. CONNECTOR-PLUG, TRAILER 113589-01-000 TO BE SUPPLIED LOOSE IN COACH WITH TRAILER TOW PACKAGE.

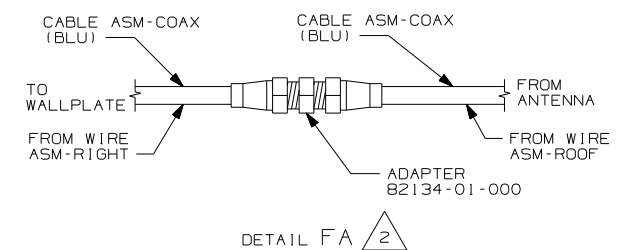
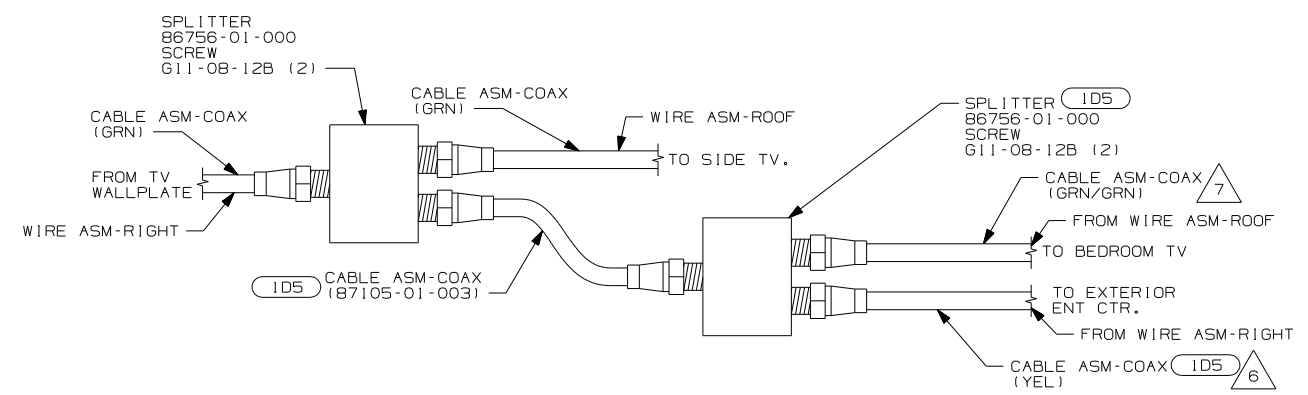
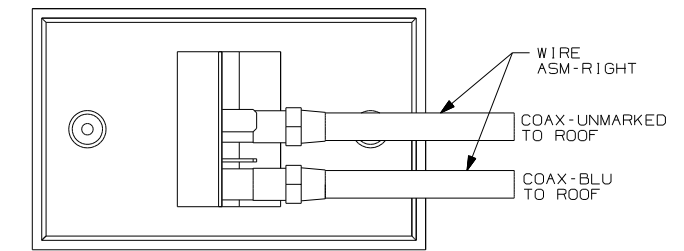
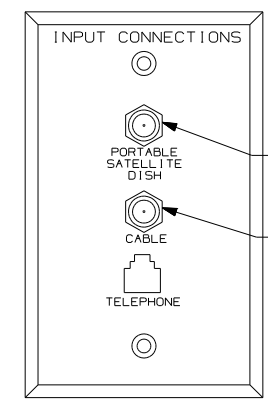
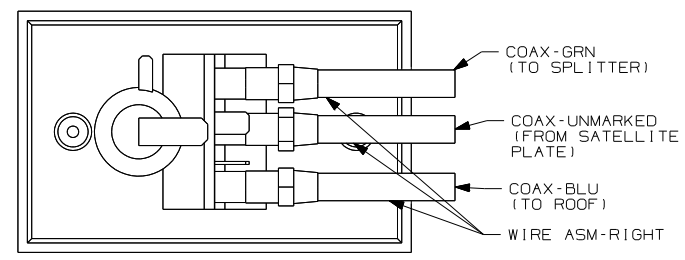
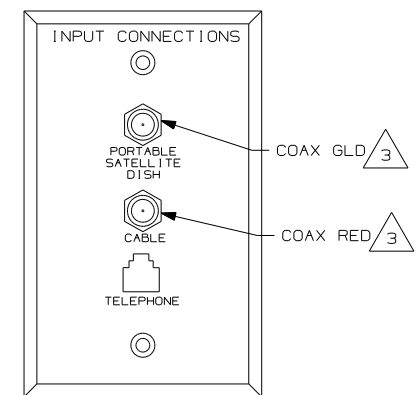
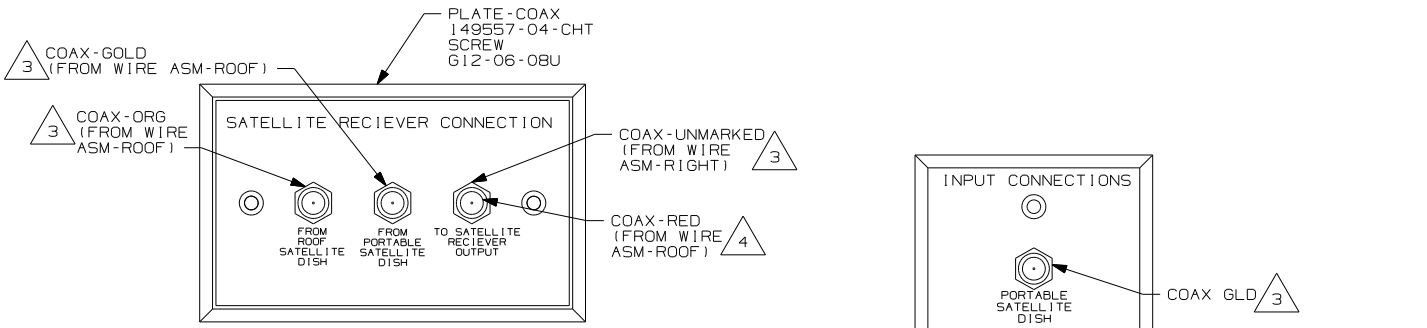
NOTES:

- 290 SOLAR PANEL - 10 WATT
- 1D5 ENTERTAINMENT CENTER/EXT W/CD
- 480 SATELLITE DISH

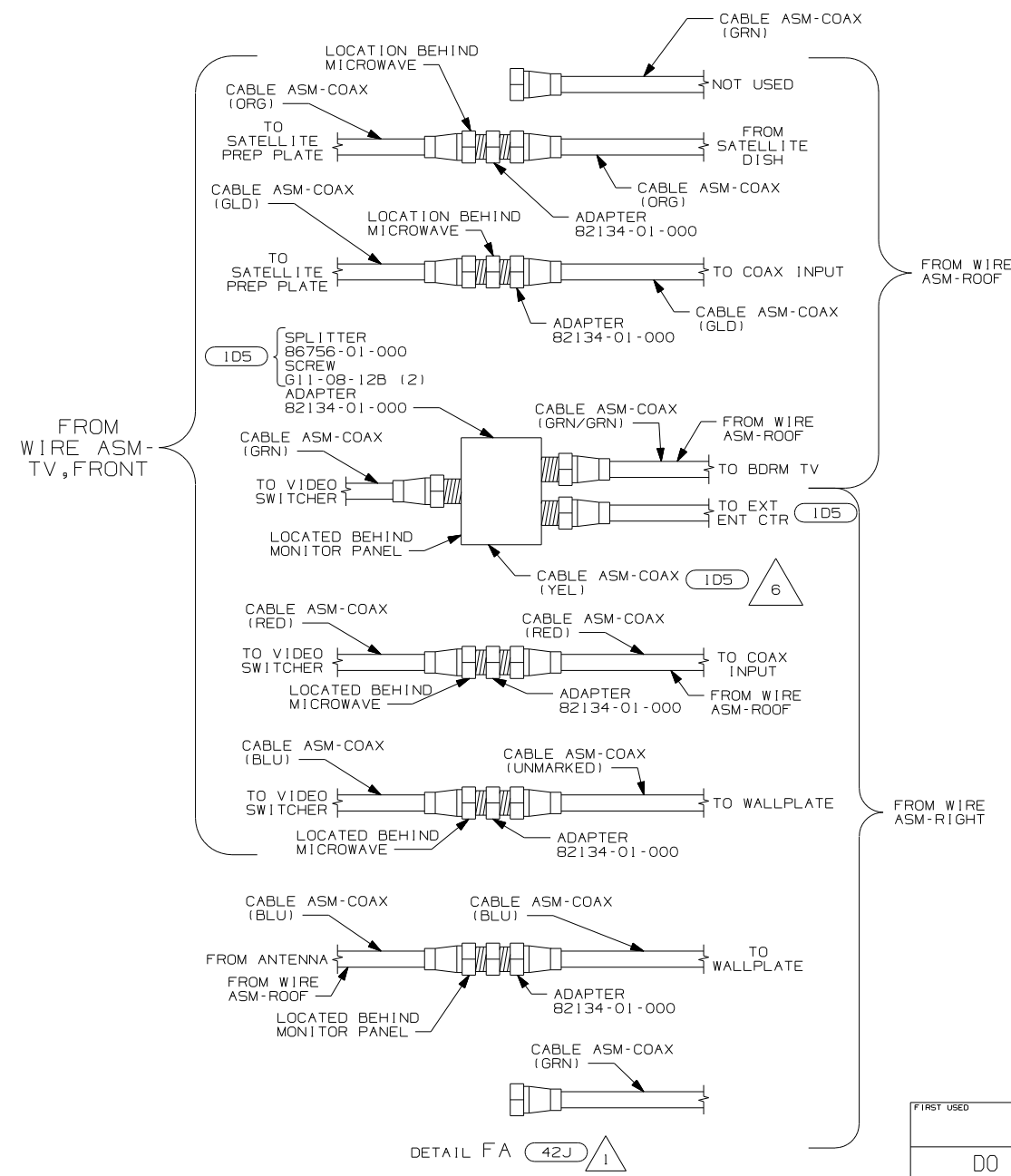
FOR ELECTRICAL TORQUE SPECIFICATIONS SEE DWG NO. 128783-01-000

FOR ELECTRICAL CALLOUTS SEE DWG NO. 121339-01-000

FIRST USED	05 427P
DO NOT SCALE DRAWING	
TITLE:	WIRING INSTL - BODY, 12V
SHEET 5	PART NO 150685



- 8 CONNECT TELEPHONE WIRES TO MATCHING COLORS ON PLATE-WALL.
- 7 COAX IS CONNECTED TO FIRST SPLITTER WITHOUT ID5.
- 6 COAX NOT USED WITHOUT ID5.
- 5 WITH SIDE ENTERTAINMENT CENTER, SEE WIRING INSTL-TV/VCR, SIDE FOR ADDITIONAL INFORMATION.
- 4 CONNECT COAX TO FRONT SIDE OF WALLPLATE
- 3 CONNECT COAX TO BACKSIDE OF WALLPLATE.
- 2 WITHOUT 42J.
- 1 WITH FRONT ENTERTAINMENT CENTER, SEE WIRING INSTL-TV/VCR, FONT FOR ADDITIONAL INFORMATION.



FIRST USED	05 427P
TITLE	DO NOT SCALE DRAWING
	WIRING INSTL-BODY, 12V
SHEET 6	PART NO 150685