



**DANGER**

**Danger of electrical shock, burns or death.** Always remove all power sources before attempting any repair, service or diagnostic work. Power can be present from shore power, generator, inverter or battery. All power sources must be disabled and secured before performing any service.

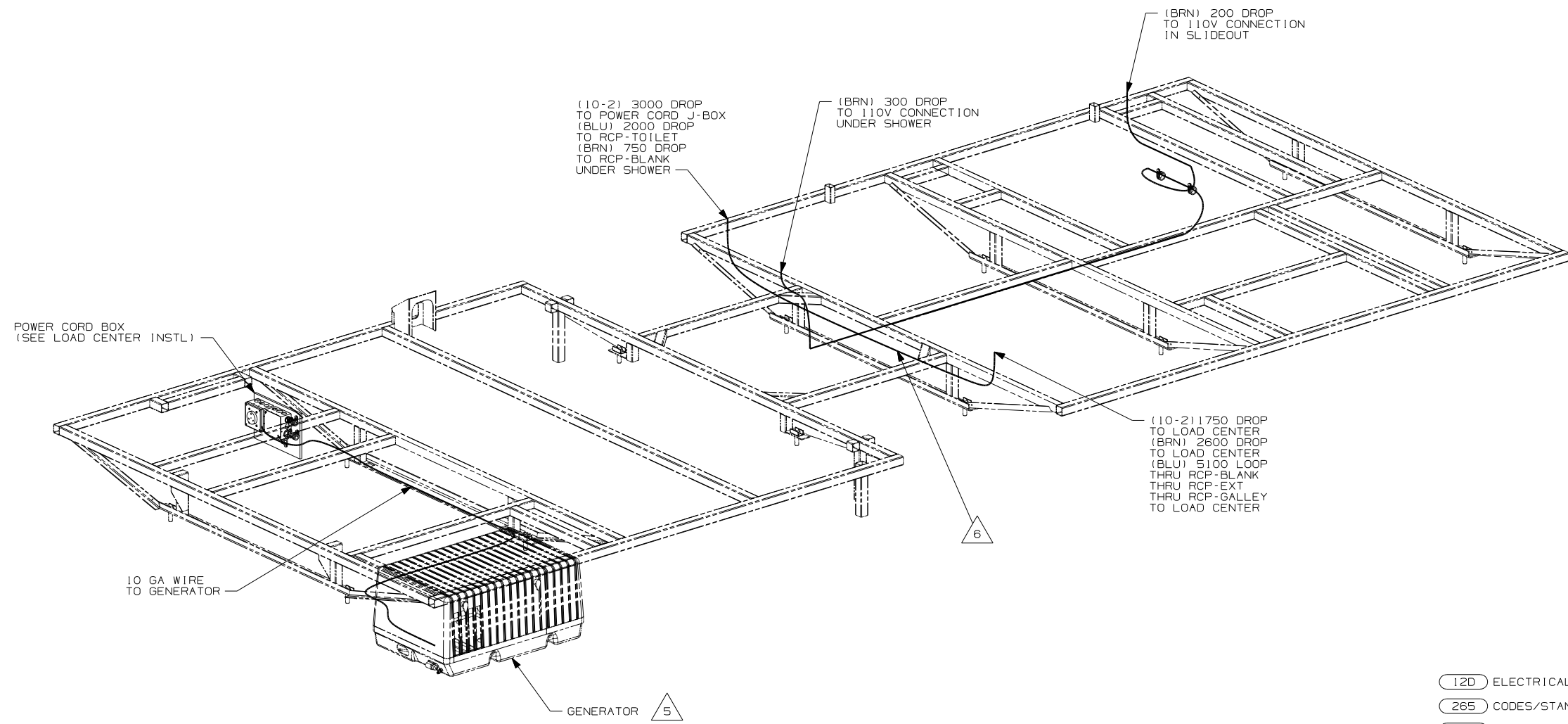


**CAUTION**

If you lack the skills, tools or equipment to perform diagnostic or repair work leave such work to an authorized Winnebago Industries dealer or other qualified shop.

DRAWING NO.	
151139-01	(1B1) (12D)
151139-02	(265) (12D)

RELEASE	REV DATE	OWG NO	151139
REV ZONE	REVISION RECORD	DATE	DFTR-ORIG



- (12D) ELECTRICAL SYSTEM 30 AMP
- (265) CODES/STANDARDS-CSA/CMVSS
- (1B1) CODES/STANDARDS USA

(1B1) (265) (12D)

**WINNEBAGO** COPYRIGHT 2004 WINNEBAGO INDUSTRIES, INC.

DFTR	ORIG. DATE
CHKR	ALL DIMENSIONS ARE IN MILLIMETERS
P.E.	
M.E.	FIRST USED
DSNR	05 327L

UNSPECIFIED TOLERANCES ARE: MATERIAL:

WHOLE DIM (X) :  
ONE-PLACE (X.X) :  
TWO-PLACE (X.XX) :  
ANGLE :

THIRD ANGLE PROJECTION

DO NOT SCALE DRAWING

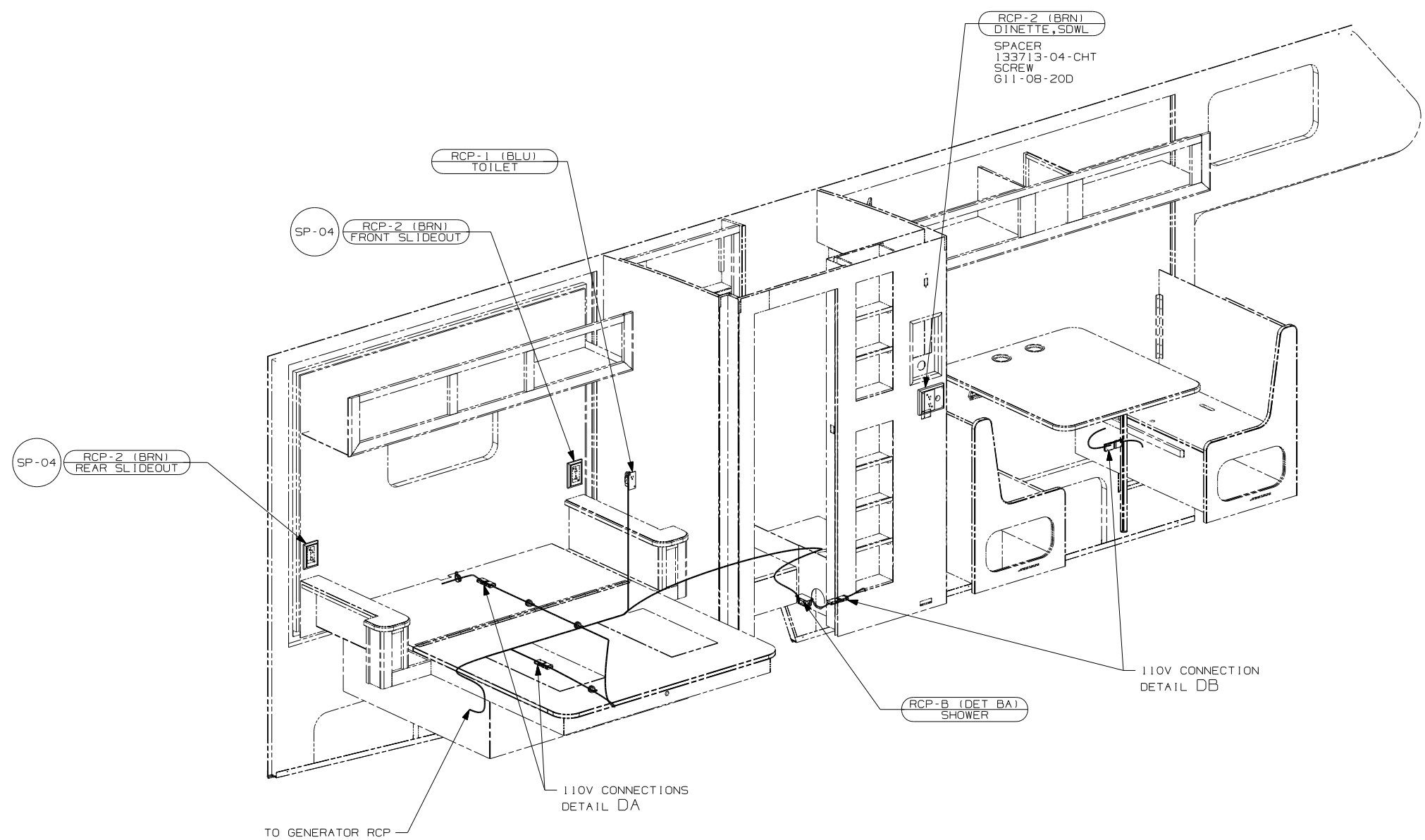
TITLE: WRING INSTL-BODY, 110V

SHEET 1 of 4 PART NO 151139

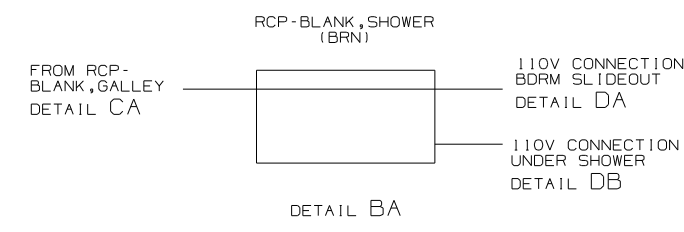
REF: 1 5/21/2004

- △6 WIRE ASM-110V ROUTED UNDER FLOOR IN THIS AREA.
- △5 FOR MORE INFORMATION SEE GENERATOR INSTL.
4. FOR MORE INFORMATION SEE WIRING DIAGRAM-BODY, 110V.
  3. ALL GROUND WIRE TO BE COVERED WITH TUBING 8041-02-000.
  2. ALL 110V WIRE TO BE CLAMPED WITH CLAMP 10497-05-000 WITHIN 200MM OF OUTLET BOXES, USE SCREW G67-10-12B.
  1. ALL WIRES TO BE SECURED WITH CLAMP 10495-01-000 OR CLIP B0734-01-000 EVERY 600MM. USE SCREW G67-10-12B UNLESS OTHERWISE SPECIFIED.

NOTES:



- NOTES:
- 6 WIRE ROUTED THROUGH FLOOR AT THIS POINT.
  - 5 FOR MORE INFORMATION SEE LOAD CENTER/ATS ASM.
  - 4. FOR MORE INFORMATION SEE WIRING DIAGRAM-BODY, 110V.
  - 3. ALL GROUND WIRE TO BE COVERED WITH TUBING 8041-02-000.
  - 2. ALL 110V WIRE TO BE CLAMPED WITH CLAMP 10497-05-000 WITHIN 200MM OF OUTLET BOXES, USE SCREW 667-10-12B.
  - 1. ALL WIRES TO BE SECURED WITH CLAMP 10495-01-000 OR CLIP 80734-01-000 EVERY 600MM. USE SCREW 667-10-12B UNLESS OTHERWISE SPECIFIED.

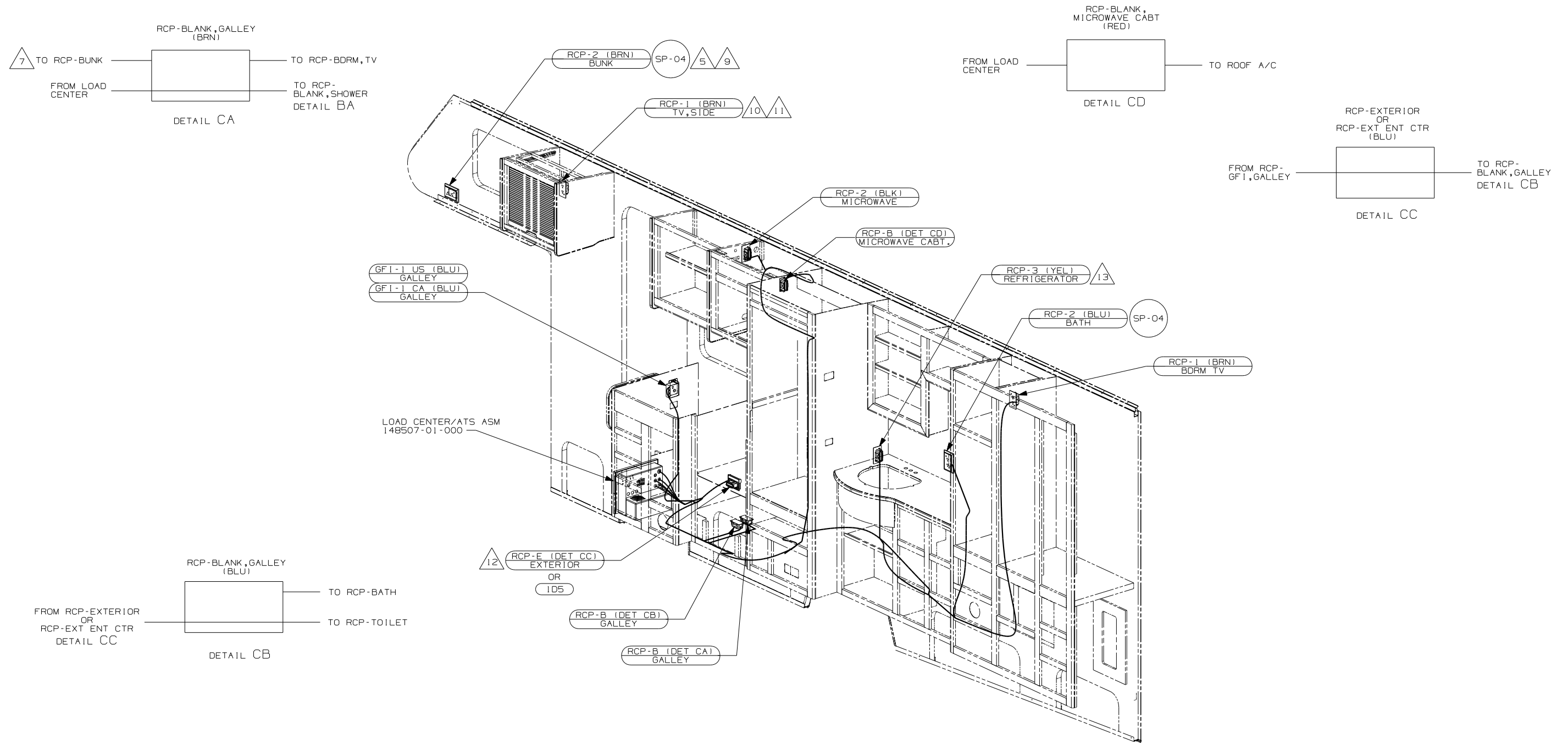


FOR ELECTRICAL TORQUE SPECIFICATIONS SEE DWG NO. 128783-01-000

FOR ELECTRICAL CALLOUTS SEE DWG NO. 121339-01-000

265 CODES/STANDARDS-CSA/CMVSS  
1B1 CODES/STANDARDS USA  
1B1 265

FIRST USED	05 327L
TITLE	DO NOT SCALE DRAWING
	WRING INSTL-BODY, 110V
SHEET 2	PART NO 151139



- △ 8 WIRE IN ROOF
  - △ 7 WIRE IN SIDEWALL
  - △ 6 WIRE ROUTED THROUGH FLOOR AT THIS POINT.
  - △ 5 FOR MORE INFORMATION SEE WIRING INSTL-TV/VCR,FRONT.
4. FOR MORE INFORMATION SEE WIRING DIAGRAM-BODY,110V.
  3. ALL GROUND WIRE TO BE COVERED WITH TUBING 8041-02-000.
  2. ALL 110V WIRE TO BE CLAMPED WITH CLAMP 10497-05-000 WITHIN 200MM OF OUTLET BOXES, USE SCREW G67-10-12B.
  1. ALL WIRES TO BE SECURED WITH CLAMP 10495-01-000 OR CLIP 80734-01-000 EVERY 600MM. USE SCREW G67-10-12B UNLESS OTHERWISE SPECIFIED.

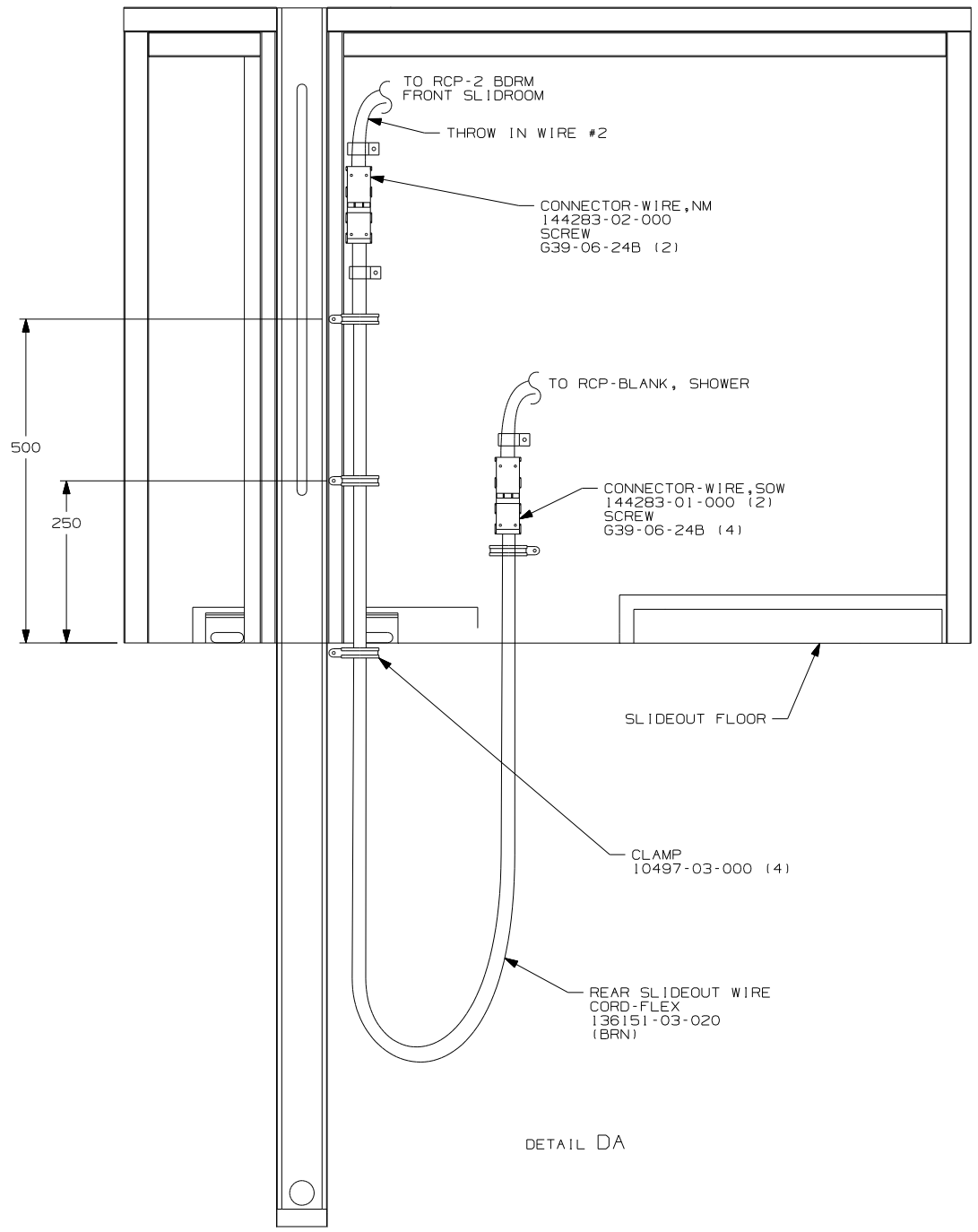
- △ 13 LOCATE REFRIGERATOR RECEPTACLE ON TIEDOWN BRACKET.
- △ 12 NOT USED WITH 1D5
- △ 11 NOT USED WITH 42J OR 1JR
- △ 10 FOR MORE INFORMATION SEE WIRING INSTL-TV/VCR,SIDE.
- △ 9 NOT USED WITH 42J

- 42J TV-24" COLOR,STEREO W/REMOTE
- 1JR TV-13" W/DVD-12V
- 1D5 ENTERTAINMENT CENTR/EXT W/CD
- 265 CODES/STANDARDS-CSA/CMVSS
- 1B1 CODES/STANDARDS USA

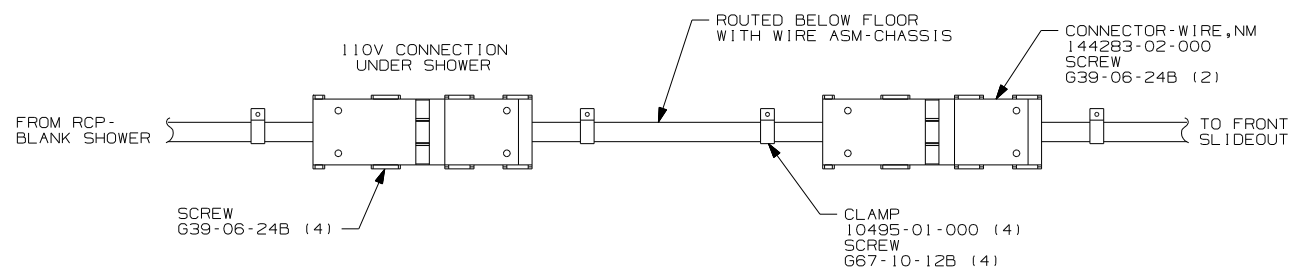
FIRST USED	
05 327L	
DO NOT SCALE DRAWING	
TITLE:	
WRING INSTL-BODY,110V	
SHEET 3	PART NO
	151139

FOR ELECTRICAL TORQUE SPECIFICATIONS SEE DWG NO. 128783-01-000

FOR ELECTRICAL CALLOUTS SEE DWG NO. 121339-01-000



DETAIL DA



DETAIL DB

265 CODES/STANDARDS - CSA/CMVSS  
 1B1 CODES/STANDARDS - USA

1B1 265

FIRST USED	05 327L
DO NOT SCALE DRAWING	
TITLE:	WRING INSTL-BODY, 110V
SHEET 4	PART NO 151139

FOR ELECTRICAL TORQUE SPECIFICATIONS SEE DWG NO. 128783-01-000

(X-X) FOR ELECTRICAL CALLOUTS SEE DWG NO. 121339-01-000