



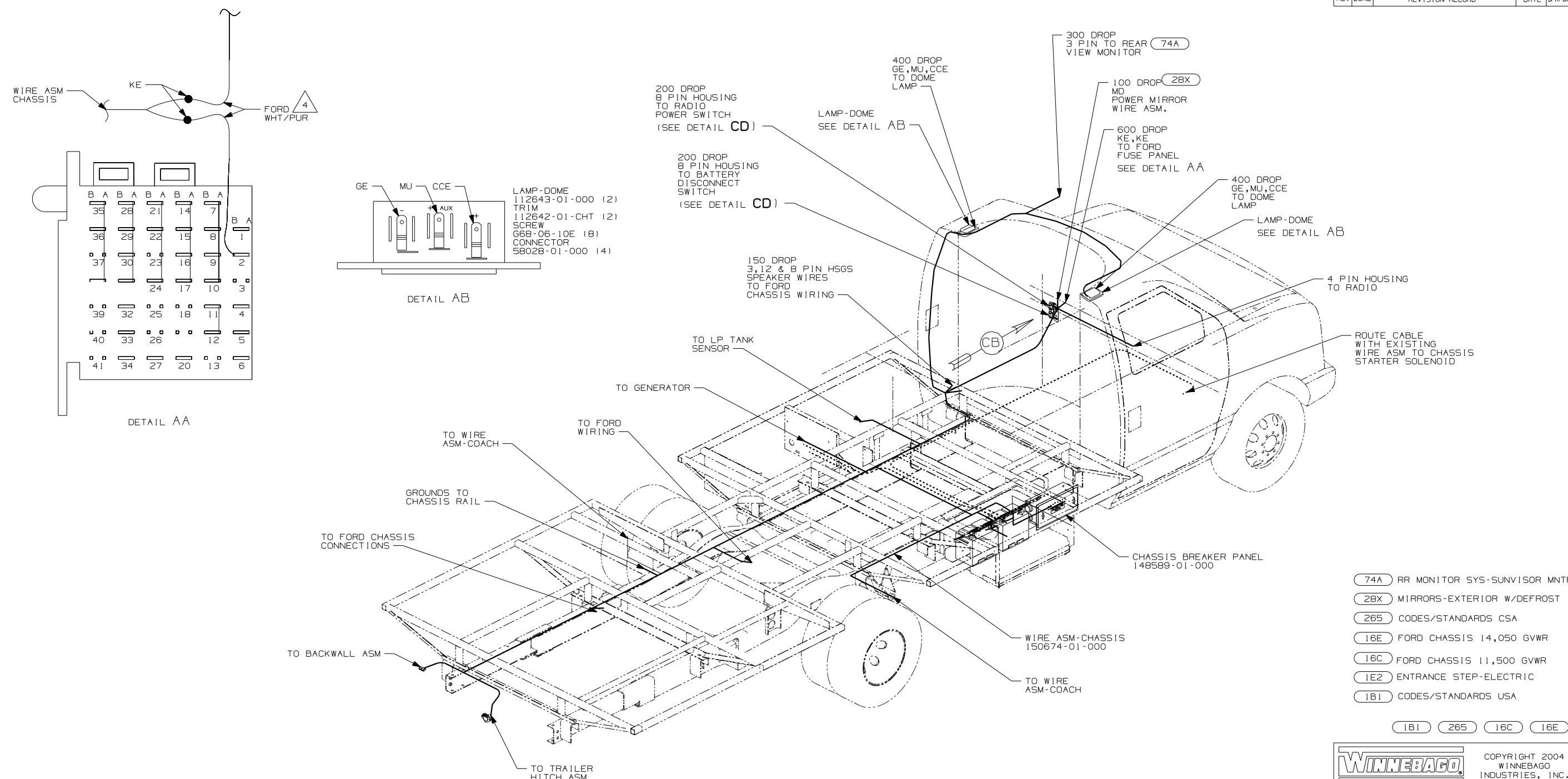
**DANGER**

**Danger of electrical shock, burns or death.** Always remove all power sources before attempting any repair, service or diagnostic work. Power can be present from shore power, generator, inverter or battery. All power sources must be disabled and secured before performing any service.



**CAUTION**

If you lack the skills, tools or equipment to perform diagnostic or repair work leave such work to an authorized Winnebago Industries dealer or other qualified shop.



- (74A) RR MONITOR SYS-SUNVISOR MNTR
- (28X) MIRRORS-EXTERIOR W/DEFROST
- (265) CODES/STANDARDS CSA
- (16E) FORD CHASSIS 14,050 GVWR
- (16C) FORD CHASSIS 11,500 GVWR
- (1E2) ENTRANCE STEP-ELECTRIC
- (1B1) CODES/STANDARDS USA

(1B1) (265) (16C) (16E)

<b>WINNEBAGO</b>		COPYRIGHT 2004 WINNEBAGO INDUSTRIES, INC.	
DFT	ORIG. DATE	ALL DIMENSIONS ARE IN MILLIMETERS	
CHKR		FIRST USED	
P.E.		05 324V	
M.E.		UNSPECIFIED TOLERANCES ARE:	
DSNR		MATERIAL:	
		WHOLE DIM (X)	:
		ONE-PLACE (X, X)	: 1.5
		TWO-PLACE (X, XX)	: 0.50
		ANGLE	:
		THIRD ANGLE PROJECTION	:
		FORD	
DO NOT SCALE DRAWING			
TITLE: WIRING INSTL-CHASSIS			
SHEET 1 OF 3		PART NO 150671	

4 CUT WIRE AND RECONNECT AS SHOWN.

3. SECURE WIRE ASM AND CABLES WITH WIRE TIE 8343-01-000 OR 116673-01-000 AT NOT MORE THAN 600 MM CENTER ALONG ENTIRE ROUTED PATH.

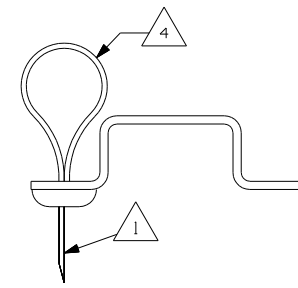
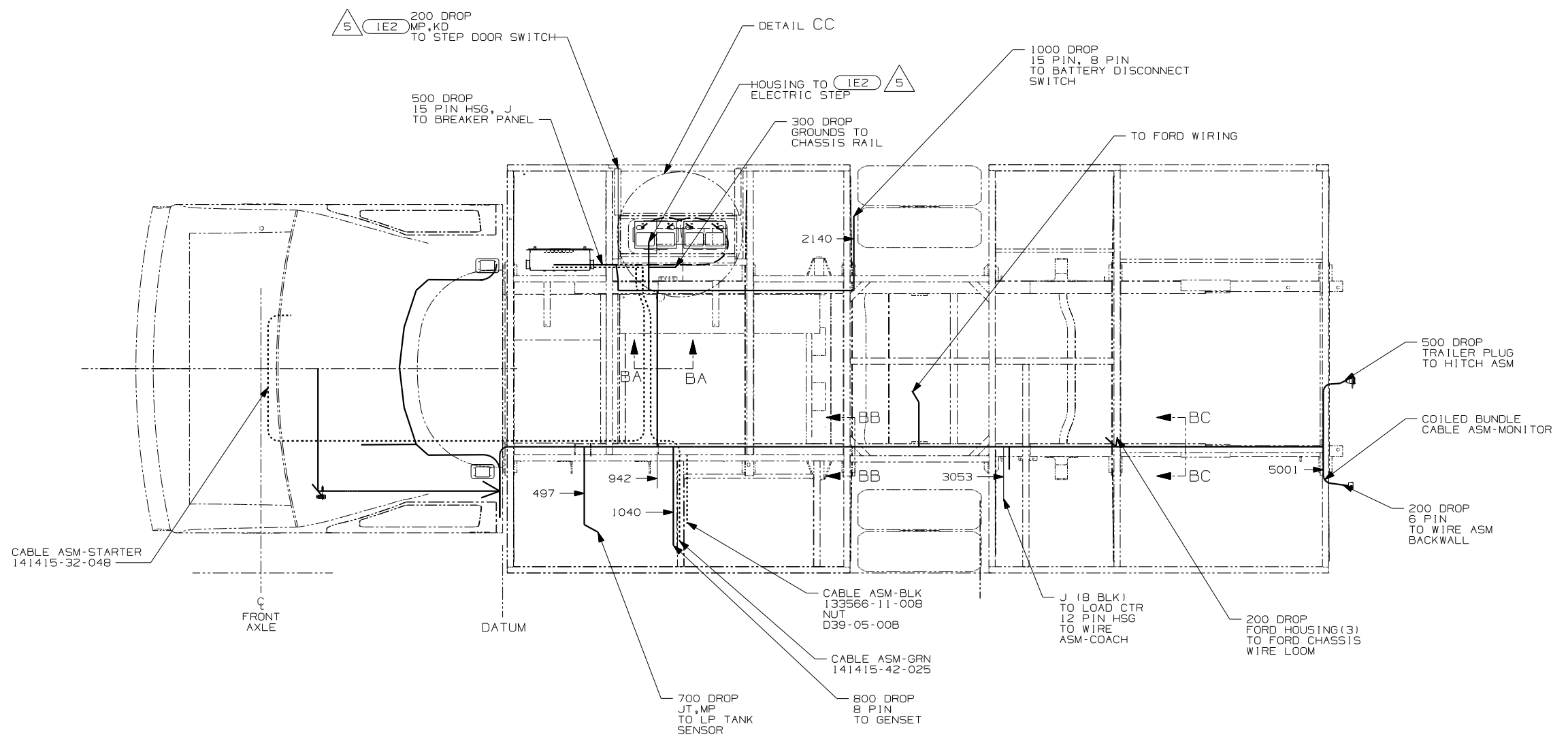
2. SECURE CONDUIT 41953-01-000 OVER ALL WIRE IN CONTACT WITH ANY SHARP EDGE.

1. LEGEND: - - - - - FORD WIRING ——— WINNEBAGO WIRING ..... CABLE

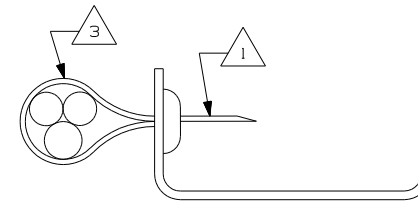
NOTES:

FOR ELECTRICAL TORQUE SPECIFICATIONS SEE DWG NO. 128783-01-000

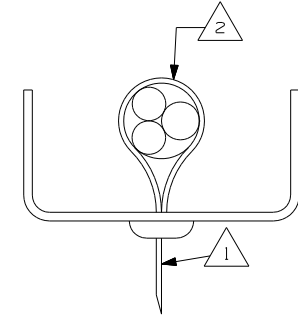
(X-X) FOR ELECTRICAL CALLOUTS SEE DWG NO. 121339-01-000



SECTION BA-BA



SECTION BB-BB



SECTION BC-BC

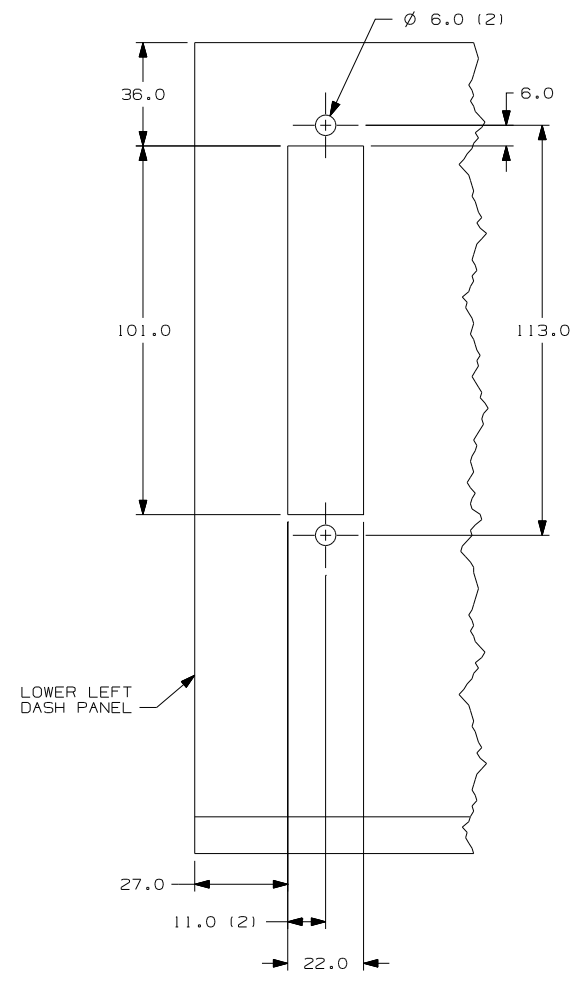
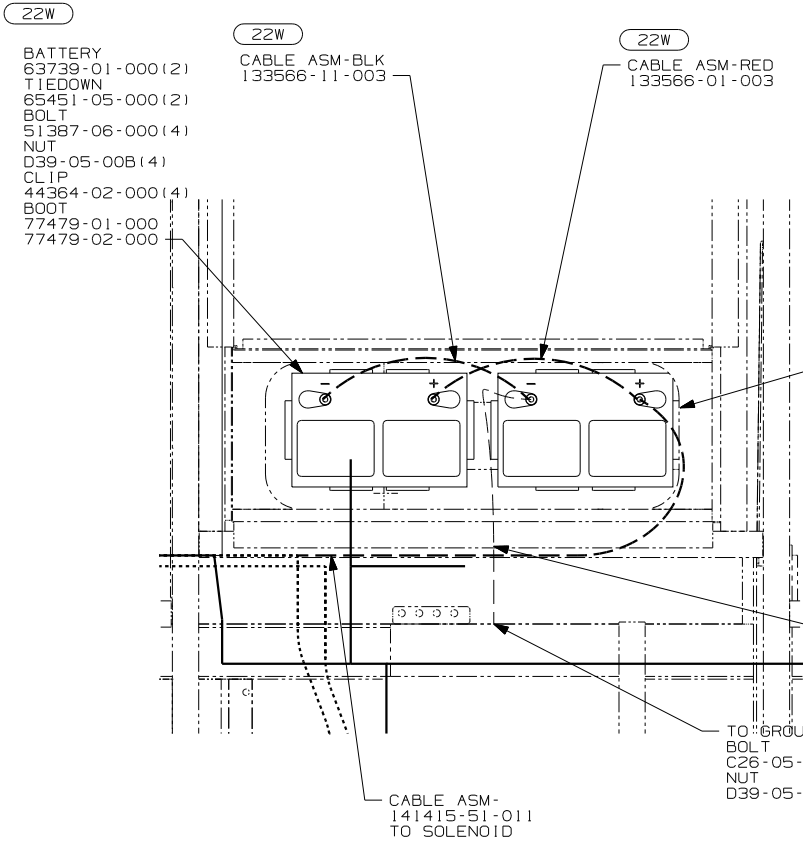
- (265) CODES/STANDARDS CSA
- (16E) FORD CHASSIS 14,050 GVWR
- (16C) FORD CHASSIS 11,500 GVWR
- (1E2) ENTRANCE STEP-ELECTRIC
- (1B1) CODES/STANDARDS USA

- NOTES:
- 5 SECURE THE DROP BACK TO MAIN WIRE ASM TRUNK WHEN NOT USED.
  - 4 WIRES TO BE TIED TO CROSS MEMBER USING EXISTING HOLES.
  - 3 WIRES TO BE TIED TO TOP OF RAIL USING EXISTING HOLES.
  - 2 WIRES TO BE TIED TO INSIDE OF RAIL USING EXISTING HOLES.
  - 1 CUT OFF EXCESS END OF WIRE TIE.

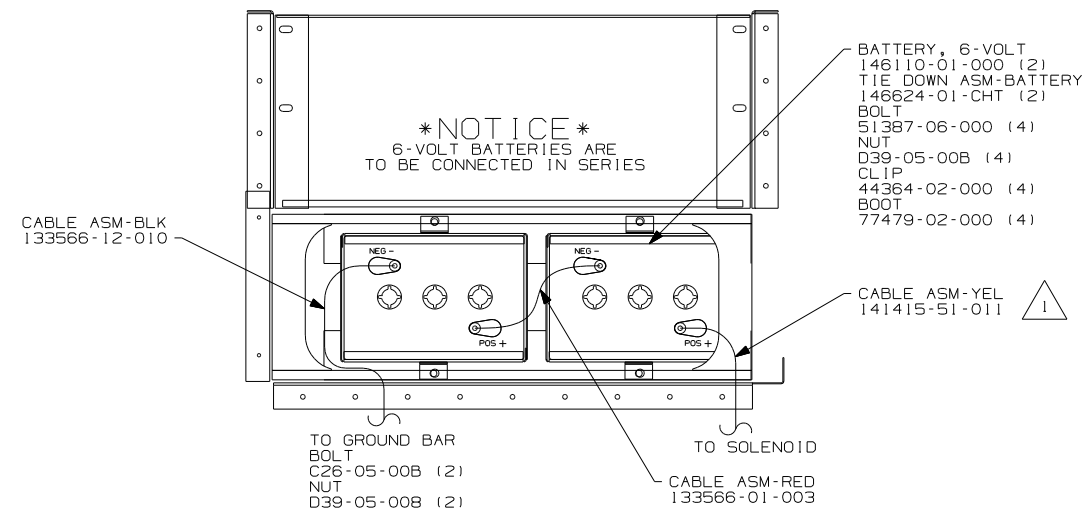
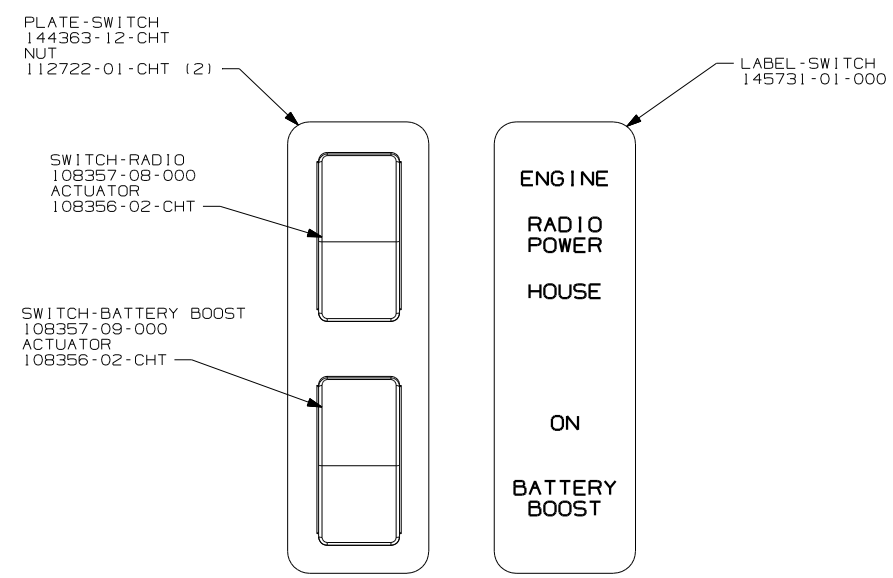
FOR ELECTRICAL TORQUE SPECIFICATIONS SEE DWG NO. 128783-01-000

FOR ELECTRICAL CALLOUTS SEE DWG NO. 121339-01-000

FIRST USED	05 324V	FORD
DO NOT SCALE DRAWING		
TITLE:	WIRING INSTL-CHASSIS	
SHEET 2	PART NO	150671



DETAIL CC 2



DETAIL CC 644

- 644 GREAT ALASKAN RENTAL PACKAGE
- 22W BATTERY-SECOND
- 12X BATTERY-ONE
- 265 CODES/STANDARDS CSA
- 16E FORD CHASSIS 14,050 GVWR
- 16C FORD CHASSIS 11,500 GVWR
- 1B1 CODES/STANDARDS USA

NOTES:  
2 WITHOUT 644  
1 LEAD IS MARKED WITH YELLOW TAPE.

DETAIL CD 16E 16C

FIRST USED	05 324V
DO NOT SCALE DRAWING	
TITLE:	WIRING INSTL-CHASSIS
SHEET 3	PART NO 150671