



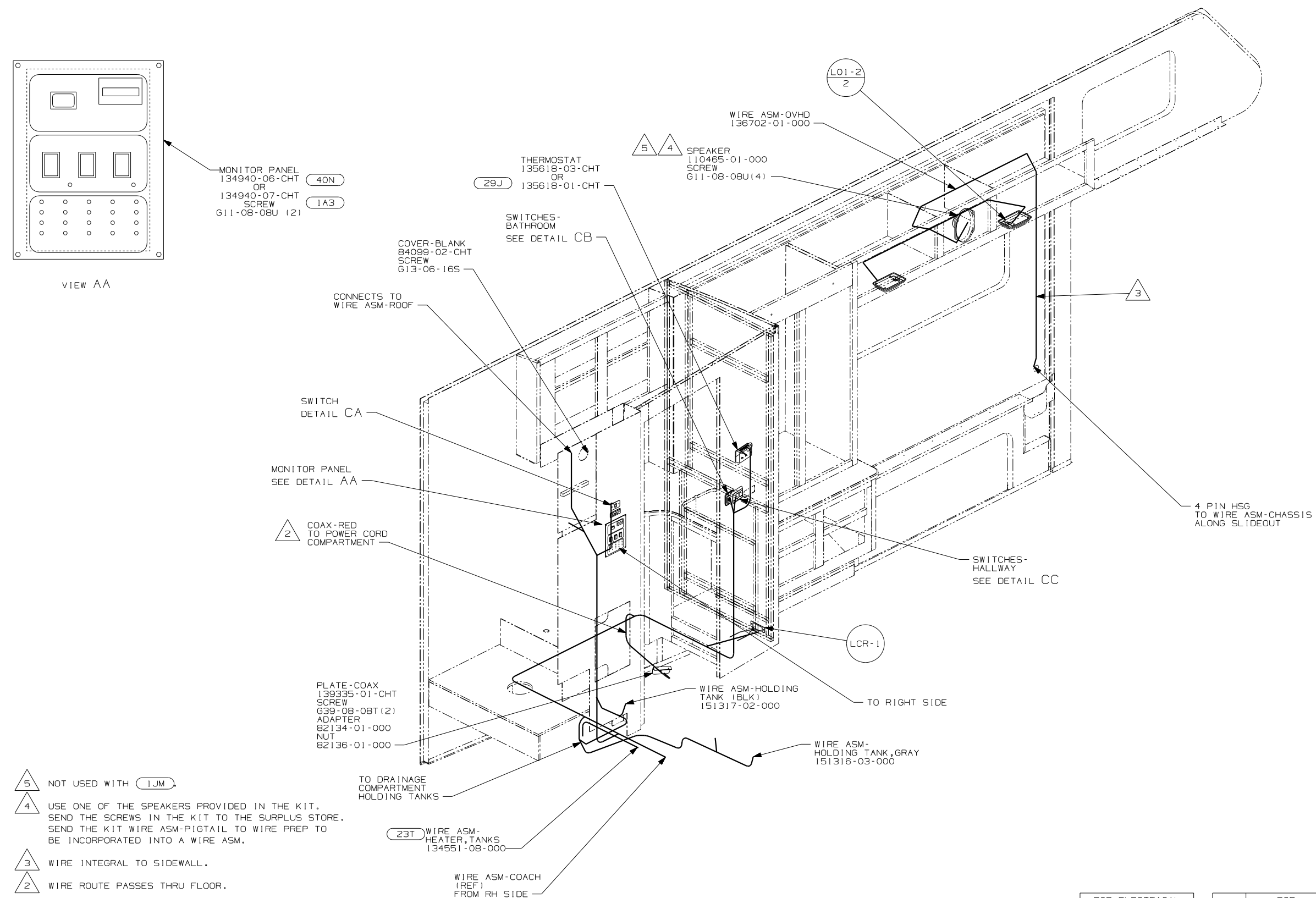
**DANGER**

**Danger of electrical shock, burns or death.** Always remove all power sources before attempting any repair, service or diagnostic work. Power can be present from shore power, generator, inverter or battery. All power sources must be disabled and secured before performing any service.



**CAUTION**

If you lack the skills, tools or equipment to perform diagnostic or repair work leave such work to an authorized Winnebago Industries dealer or other qualified shop.



MONITOR PANEL  
134940-06-CHT (40N)  
OR  
134940-07-CHT (1A3)  
SCREW  
G11-08-08U (2)

THERMOSTAT  
135618-03-CHT (29J)  
OR  
135618-01-CHT

SPEAKER  
110465-01-000 (4)  
SCREW  
G11-08-08U (4)

COVER-BLANK  
84099-02-CHT  
SCREW  
G13-06-16S

SWITCHES-  
BATHROOM  
SEE DETAIL CB

SWITCH  
DETAIL CA

MONITOR PANEL  
SEE DETAIL AA

COAX-RED  
TO POWER CORD  
COMPARTMENT (2)

SWITCHES-  
HALLWAY  
SEE DETAIL CC

PLATE-COAX  
139335-01-CHT  
SCREW  
G39-08-08T (2)  
ADAPTER  
82134-01-000  
NUT  
82136-01-000

WIRE ASM-HOLDING  
TANK (BLK)  
151317-02-000

WIRE ASM-  
HOLDING TANK, GRAY  
151316-03-000

TO DRAINAGE  
COMPARTMENT  
HOLDING TANKS

WIRE ASM-  
HEATER, TANKS  
134551-08-000 (23T)

WIRE ASM-COACH  
(REF)  
FROM RH SIDE

5 NOT USED WITH 1JM.

4 USE ONE OF THE SPEAKERS PROVIDED IN THE KIT. SEND THE SCREWS IN THE KIT TO THE SURPLUS STORE. SEND THE KIT WIRE ASM-PIGTAIL TO WIRE PREP TO BE INCORPORATED INTO A WIRE ASM.

3 WIRE INTEGRAL TO SIDEWALL.

2 WIRE ROUTE PASSES THRU FLOOR.

1. ALL WIRES TO BE SECURED WITH CLAMP 10495-01-000 OR CLIP 80734-01-000 EVERY 600MM. USE SCREW G67-10-12B UNLESS OTHERWISE SPECIFIED.

NOTES:

- (40N) GEN-4.0KW-ONANGAS-MICROQUIET
- (29J) AC HEAT PUMP-1
- (23T) DRAINAGE SYSTEM-HEATED
- (265) CODES/STANDARDS-CSA/CMVSS
- (1JM) HOME THEATER SOUND SYSTEM
- (1B1) CODES/STANDARDS USA
- (1A3) GENERATOR WITHOUT

(1B1) (265)

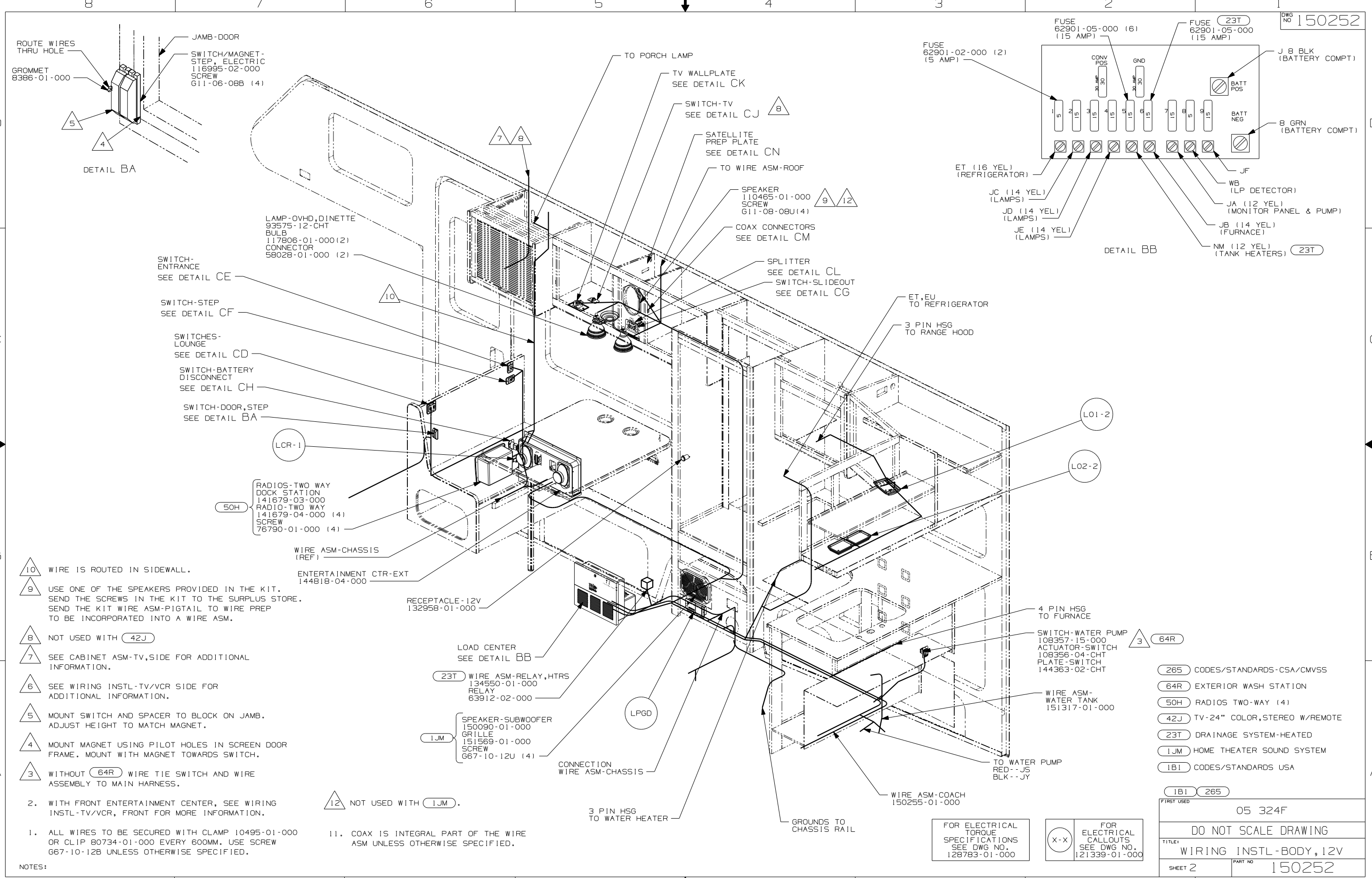


DFTR	ORIG. DATE
CHKR	ALL DIMENSIONS ARE IN MILLIMETERS
P.E.	
M.E.	FIRST USED
DSNR	05 324F
UNSPECIFIED TOLERANCES ARE:	MATERIAL:
HOLE DIM (X)	:
ONE-PLACE (X.X)	:
TWO-PLACE (X.XX)	:
ANGLE	:
THIRD ANGLE PROJECTION	

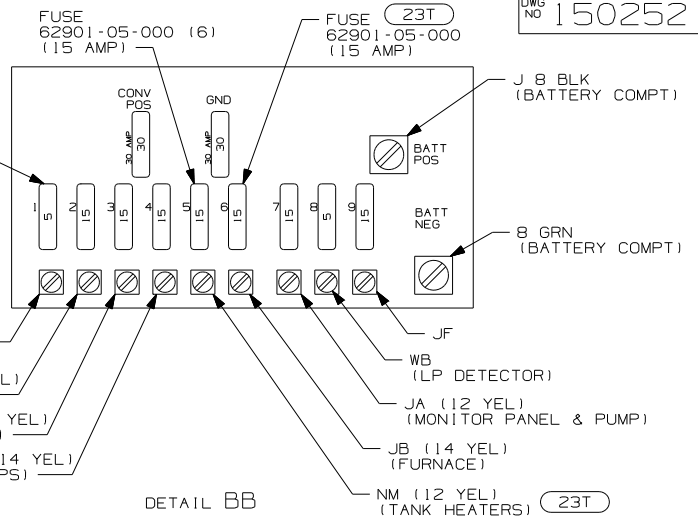
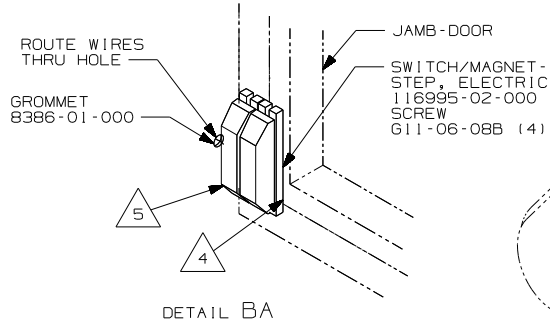
DO NOT SCALE DRAWING  
TITLE: WIRING INSTL-BODY, 12V  
SHEET 1 of 4 PART NO 150252

FOR ELECTRICAL TORQUE SPECIFICATIONS SEE DWG NO. 128783-01-000

(X-X) FOR ELECTRICAL CALLOUTS SEE DWG NO. 121339-01-000



DWG NO 150252



- 10. WIRE IS ROUTED IN SIDEWALL.
  - 9. USE ONE OF THE SPEAKERS PROVIDED IN THE KIT. SEND THE SCREWS IN THE KIT TO THE SURPLUS STORE. SEND THE KIT WIRE ASM-PIGTAIL TO WIRE PREP TO BE INCORPORATED INTO A WIRE ASM.
  - 8. NOT USED WITH (42J)
  - 7. SEE CABINET ASM-TV, SIDE FOR ADDITIONAL INFORMATION.
  - 6. SEE WIRING INSTL-TV/VCR SIDE FOR ADDITIONAL INFORMATION.
  - 5. MOUNT SWITCH AND SPACER TO BLOCK ON JAMB. ADJUST HEIGHT TO MATCH MAGNET.
  - 4. MOUNT MAGNET USING PILOT HOLES IN SCREEN DOOR FRAME. MOUNT WITH MAGNET TOWARDS SWITCH.
  - 3. WITHOUT (64R) WIRE TIE SWITCH AND WIRE ASSEMBLY TO MAIN HARNESS.
2. WITH FRONT ENTERTAINMENT CENTER, SEE WIRING INSTL-TV/VCR, FRONT FOR MORE INFORMATION.
1. ALL WIRES TO BE SECURED WITH CLAMP 10495-01-000 OR CLIP 80734-01-000 EVERY 600MM. USE SCREW 667-10-12B UNLESS OTHERWISE SPECIFIED.

12. NOT USED WITH (1JM).

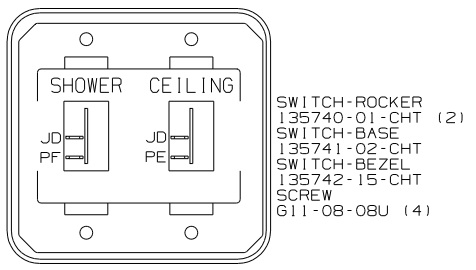
11. COAX IS INTEGRAL PART OF THE WIRE ASM UNLESS OTHERWISE SPECIFIED.

FOR ELECTRICAL TORQUE SPECIFICATIONS SEE DWG NO. 128783-01-000

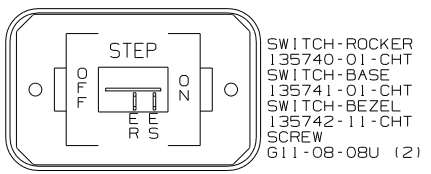
FOR ELECTRICAL CALLOUTS SEE DWG NO. 121339-01-000

(265)	CODES/STANDARDS-CSA/CMVSS
(64R)	EXTERIOR WASH STATION
(50H)	RADIOS TWO-WAY (4)
(42J)	TV-24" COLOR, STEREO W/REMOTE
(23T)	DRAINAGE SYSTEM-HEATED
(1JM)	HOME THEATER SOUND SYSTEM
(1B1)	CODES/STANDARDS USA

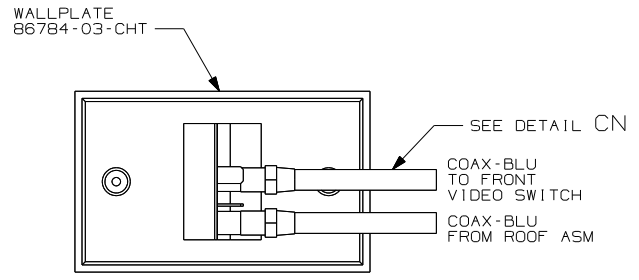
FIRST USED	05 324F
DO NOT SCALE DRAWING	
TITLE:	WIRING INSTL-BODY, 12V
SHEET 2	PART NO 150252



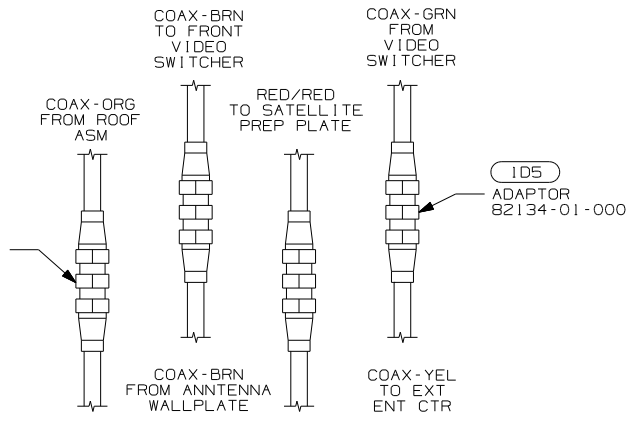
DETAIL CB



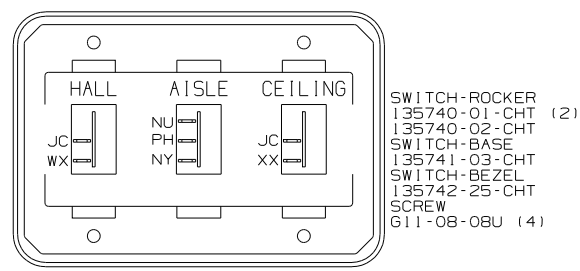
DETAIL CF (1E2)



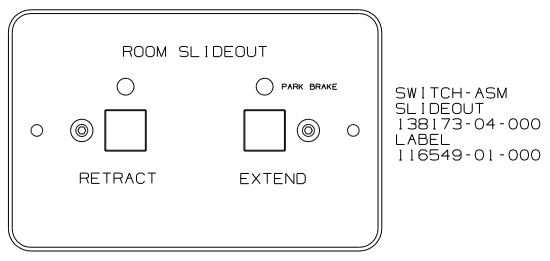
DETAIL CK (42J) 2



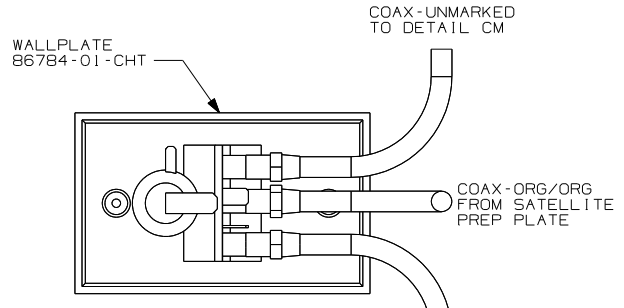
DETAIL CM (42J)



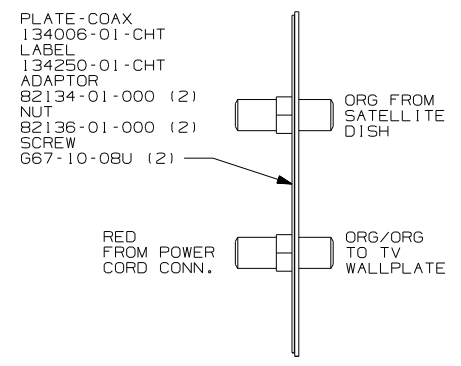
DETAIL CC



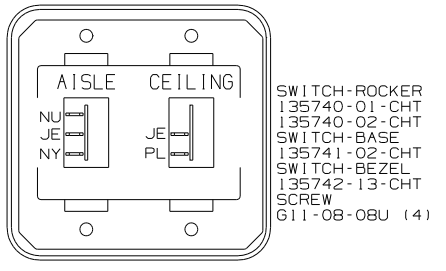
DETAIL CG



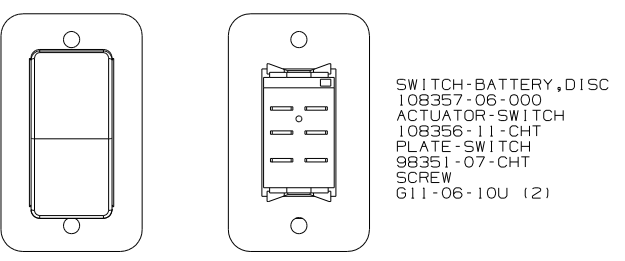
DETAIL CK 1



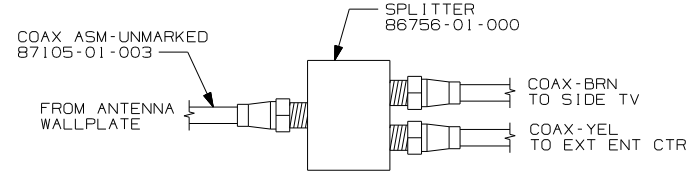
DETAIL CN



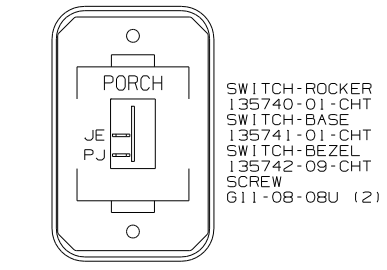
DETAIL CD



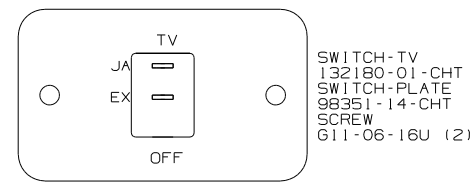
DETAIL CH (FRONT SIDE) DETAIL CH (BACK SIDE)



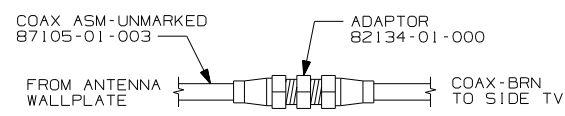
DETAIL CL (1D5)



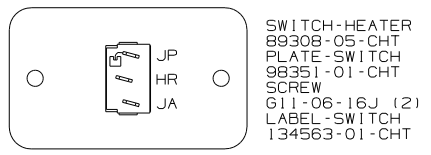
DETAIL CE



DETAIL CJ (1JR)



DETAIL CL



DETAIL CA (23T)

HOLDING TANK HEATER  
TURN OFF When Not In Use  
SEE OPERATORS MANUAL

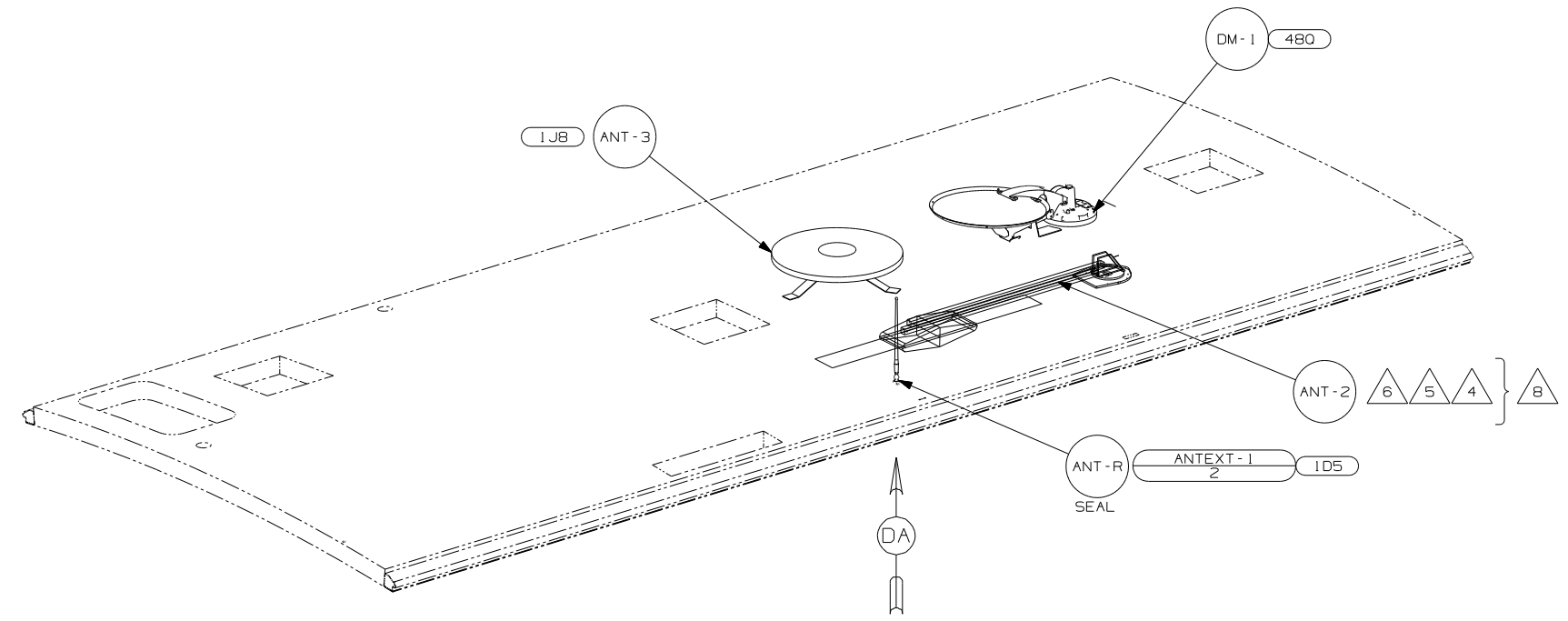
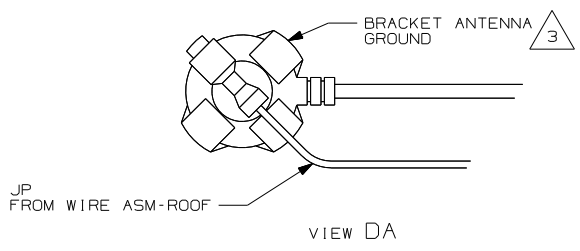
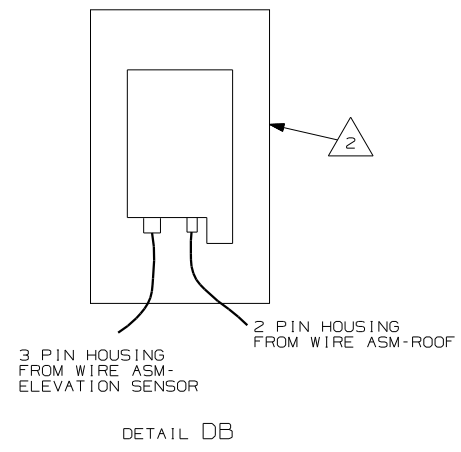
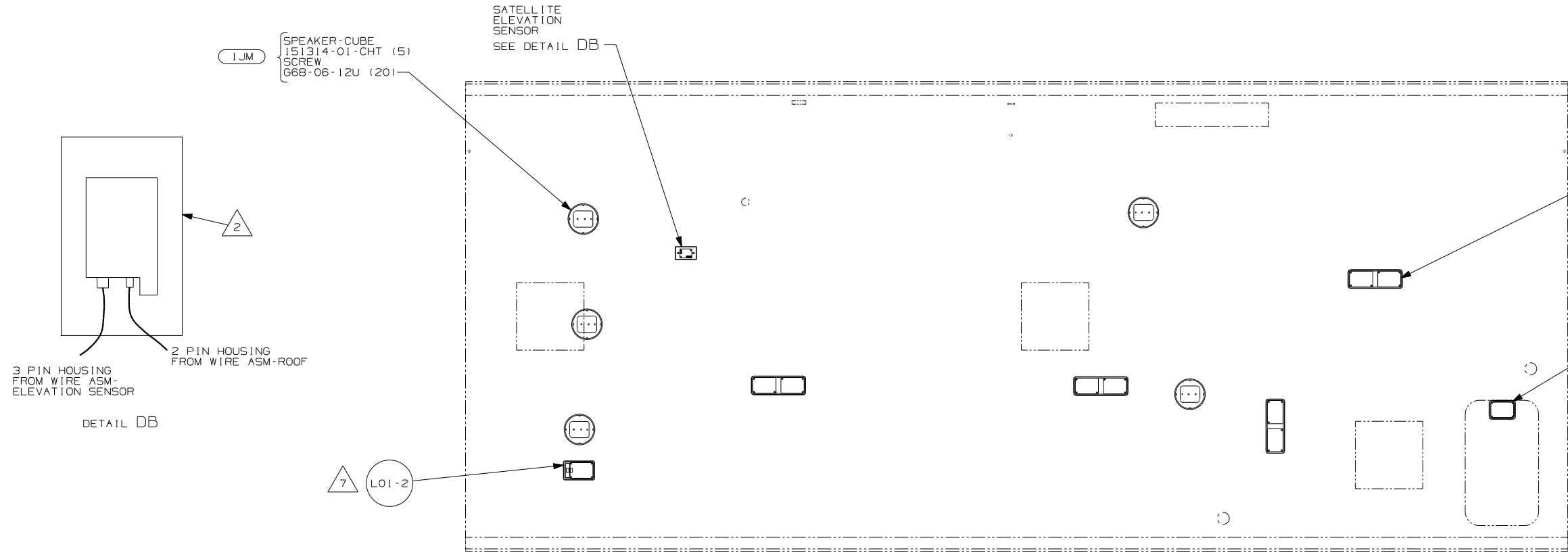
FOR ELECTRICAL CALLOUTS SEE DWG NO. 121339-01-000

FOR ELECTRICAL TORQUE SPECIFICATIONS SEE DWG NO. 128783-01-000

- (480) SATELLITE DISH & ELEV.SENSOR
- (42J) TV-24" COLOR,STEREO W/REMOTE
- (40N) GEN-4.0KW-ONANGAS-MICROQUIET
- (23T) DRAINAGE SYSTEM-HEATED
- (1D5) ENTERTAINMENT CENTR/EXT W/CD
- (1A3) GENERATOR WITHOUT
- (1E2) ENTRANCE STEP-ELEC.
- (1JR) TV-13" W/DVD-12V

- 3 SENSOR SUPPLIED WITH SATELLITE ASSEMBLY
- 2 SEE WIRING INSTL-TV/VCR,FRONT FOR ADDITIONAL INFORMATION.
- 1 NOT USED WITH (42J)

FIRST USED	05 324F
DO NOT SCALE DRAWING	
TITLE:	WIRING INSTL-BODY,12V
SHEET 3	PART NO 150252



- 8 NOT USED WITH 1JB.
- 7 NOT USED WITH 42J.
- 6 ADD RUBBER BUMPER TO ROOF UNDER EACH END OF ANTENNA IN DOWN POSITION WHICH MAY COME INTO CONTACT WITH ROOF.
- 5 LOCATE CLAMP TO RETAIN CABLE BUT NOT TO RESTRICT ANTENNA TRAVEL.
- 4 SEE DRAWING 76319-01-000 FOR INSTALLATION OF TV ANTENNA.
- 3 WRAP BRACKET LEGS AROUND ANTENNA BASE.
- 2 SENSOR SUPPLIED WITH SATELLITE ASSEMBLY.

NOTES:  
1. SEE ROOF ASSEMBLY FOR ADDITIONAL INFORMATION.

- 480 SATELLITE DISH & ELEV.SENSOR
- 42J TV-24" COLOR,STEREO W/REMOTE
- 265 CODES/STANDARDS-CSA/CMVSS
- 1JB TV ANTENNA-OMNIDIRECTIONAL
- 1JM HOME THEATER SOUND SYSTEM
- 1D5 ENTERTAINMENT CENTER/EXT W/CD
- 1B1 CODES/STANDARDS USA
- 1B1 265

FOR ELECTRICAL TORQUE SPECIFICATIONS SEE DWG NO. 128783-01-000

FOR ELECTRICAL CALLOUTS SEE DWG NO. 121339-01-000

FIRST USED	05 324F
DO NOT SCALE DRAWING	
TITLE:	WIRING INSTL-BODY,12V
SHEET 4	PART NO 150252