



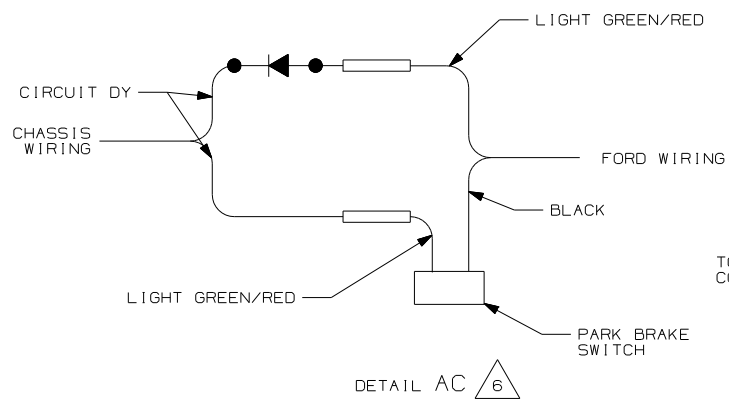
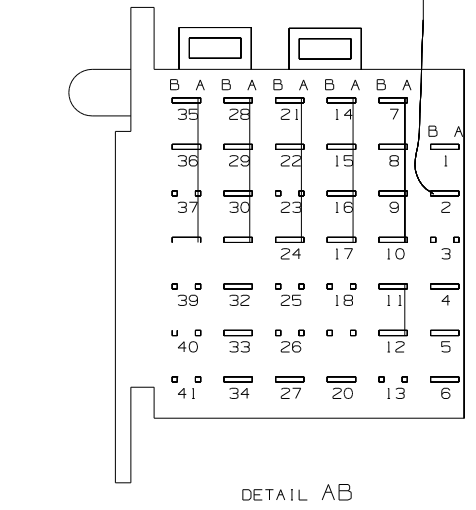
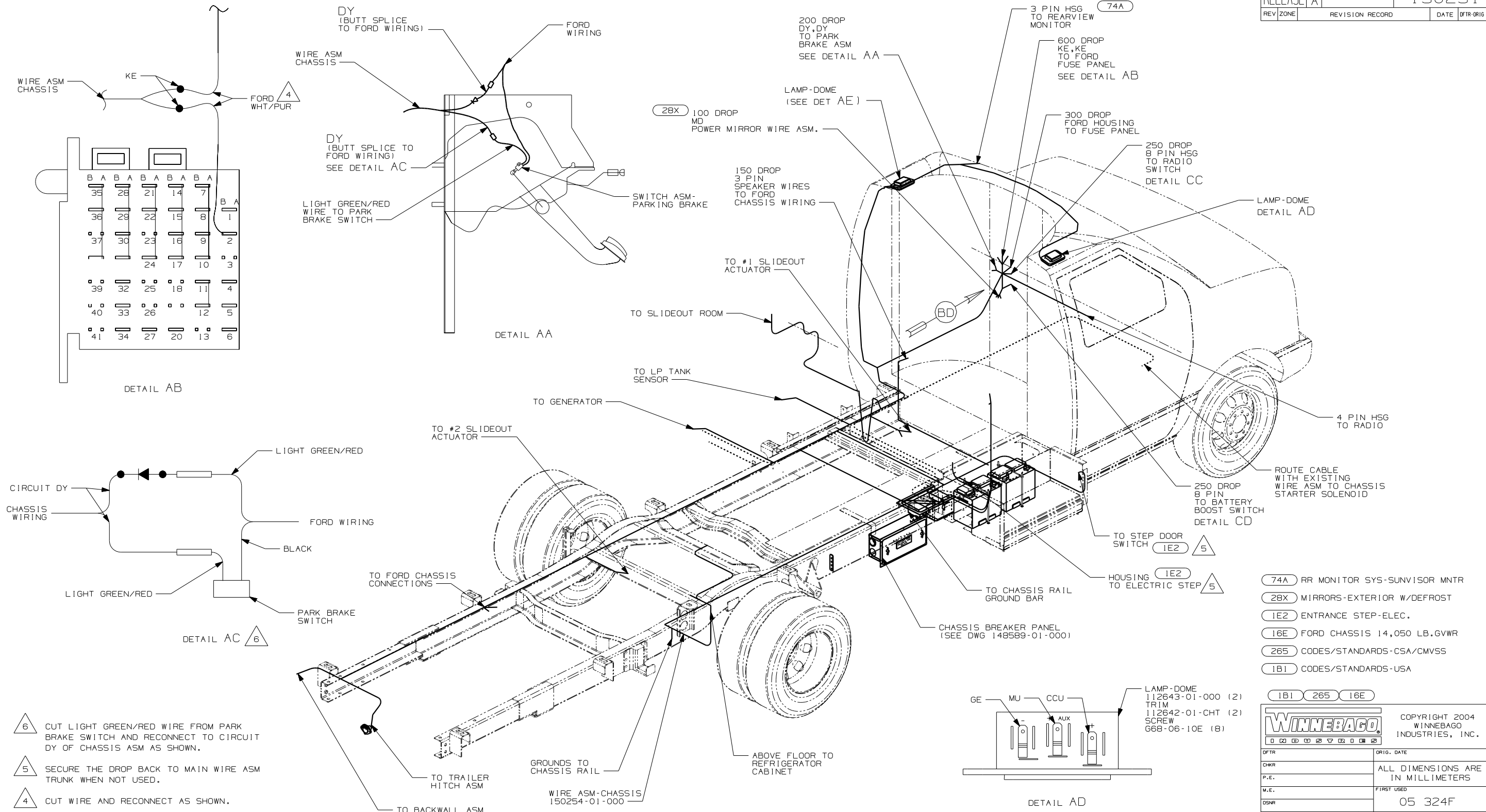
DANGER

Danger of electrical shock, burns or death. Always remove all power sources before attempting any repair, service or diagnostic work. Power can be present from shore power, generator, inverter or battery. All power sources must be disabled and secured before performing any service.



CAUTION

If you lack the skills, tools or equipment to perform diagnostic or repair work leave such work to an authorized Winnebago Industries dealer or other qualified shop.



- 6 CUT LIGHT GREEN/RED WIRE FROM PARK BRAKE SWITCH AND RECONNECT TO CIRCUIT DY OF CHASSIS ASM AS SHOWN.
- 5 SECURE THE DROP BACK TO MAIN WIRE ASM TRUNK WHEN NOT USED.
- 4 CUT WIRE AND RECONNECT AS SHOWN.
3. SECURE WIRE ASM AND CABLES WITH WIRE TIE 8343-01-000 OR 116673-01-000 AT NOT MORE THAN 600 MM CENTER ALONG ENTIRE ROUTED PATH.
2. SECURE CONDUIT 41953-09, -10, -11, -13, AND -14 OVER ALL WIRES IN CONTACT WITH SHARP EDGES.
1. LEGEND: — WINNEBAGO; CABLE; - - - - - CHASSIS SUPPLIED WIRING.

- 74A RR MONITOR SYS-SUNVISOR MNTR
- 28X MIRRORS-EXTERIOR W/DEFROST
- IE2 ENTRANCE STEP-ELEC.
- 16E FORD CHASSIS 14,050 LB.GVWR
- 265 CODES/STANDARDS-CSA/CMVSS
- 1B1 CODES/STANDARDS-USA

1B1 265 16E

WINNEBAGO COPYRIGHT 2004 WINNEBAGO INDUSTRIES, INC.

DFT	ORIG. DATE
CHKR	ALL DIMENSIONS ARE IN MILLIMETERS
P.E.	
M.E.	FIRST USED
DSNR	05 324F

UNSPECIFIED TOLERANCES ARE: MATERIAL:

WHOLE DIM (X) :
ONE-PLACE (X.X) :
TWO-PLACE (X.XX) :
ANGLE :

THIRD ANGLE PROJECTION

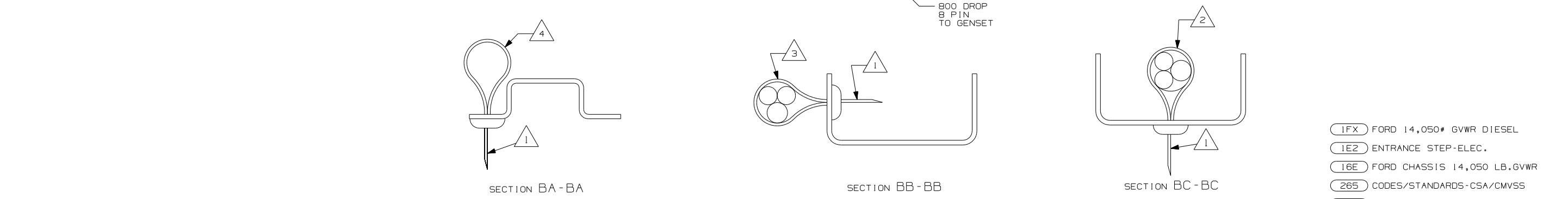
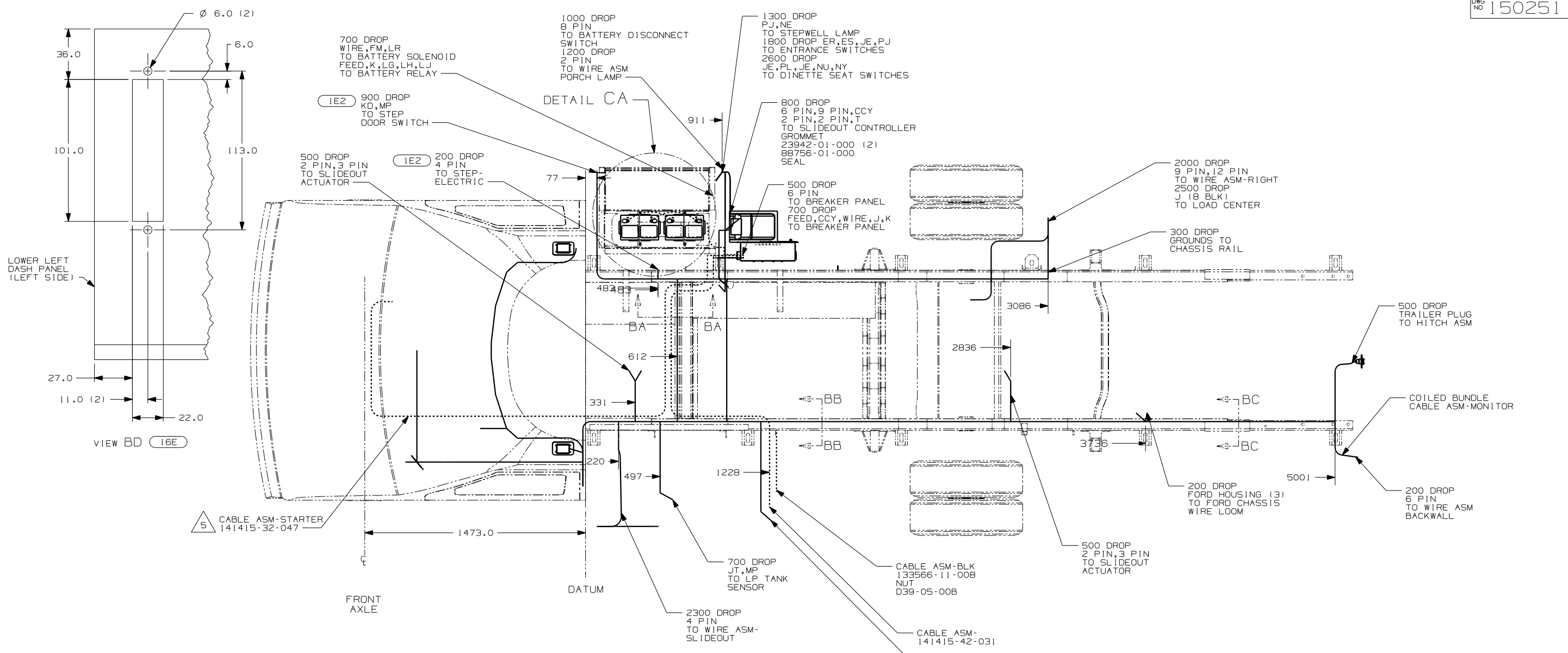
DO NOT SCALE DRAWING

TITLE: WIRING INSTL-CHASSIS

SHEET 1 OF 3 PART NO 150251

FOR ELECTRICAL TORQUE SPECIFICATIONS SEE DWG NO. 128783-01-000

X-X FOR ELECTRICAL CALLOUTS SEE DWG NO. 121339-01-000

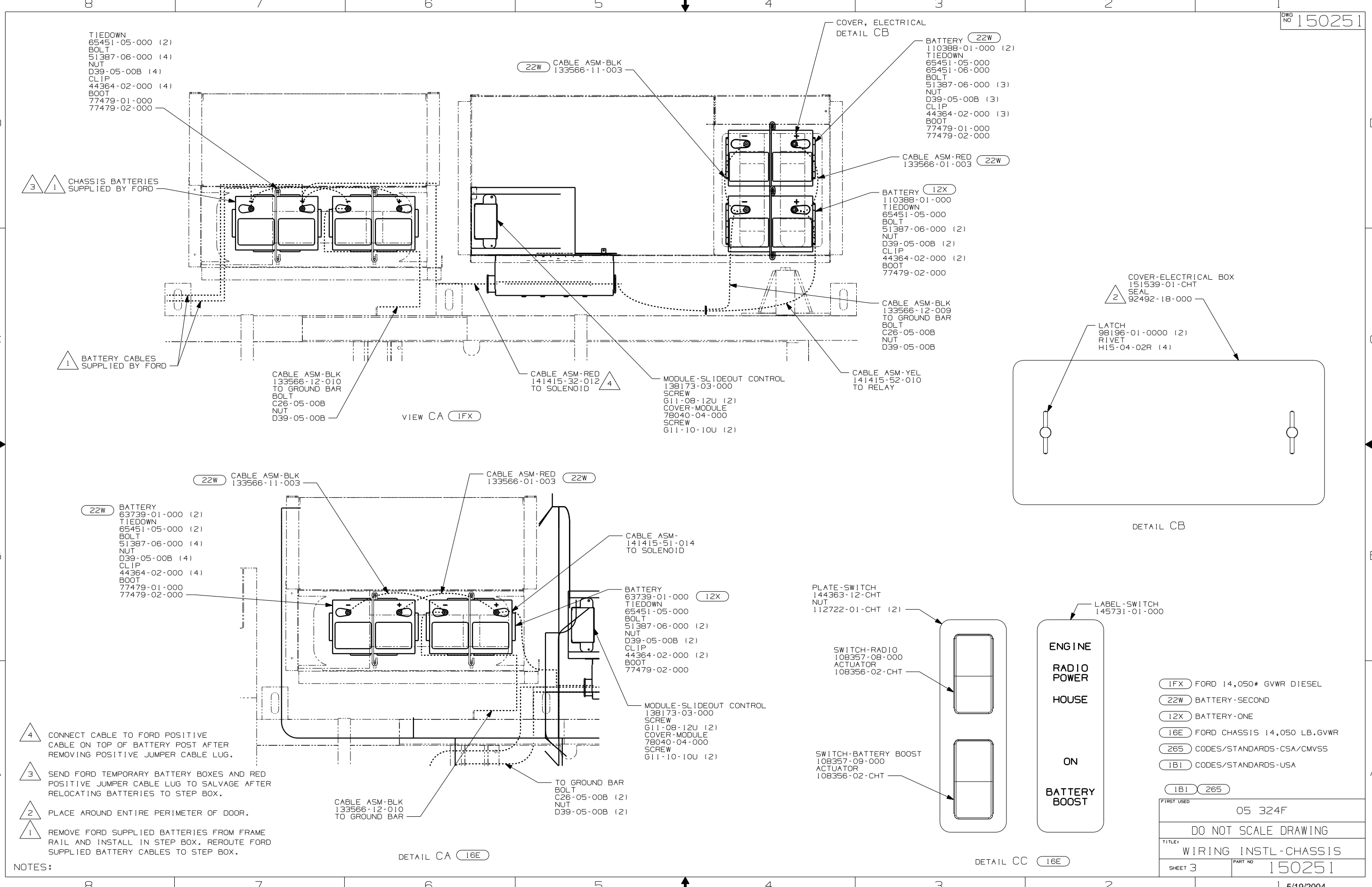


- NOTES:
- 5 NOT USED WITH 1FX
 - 4 WIRES TO BE TIED TO CROSS MEMBER USING EXISTING HOLES.
 - 3 WIRES TO BE TIED TO TOP OF RAIL USING EXISTING HOLES.
 - 2 WIRES TO BE TIED TO INSIDE OF RAIL USING EXISTING HOLES.
 - 1 CUT OFF EXCESS END OF WIRE TIE.

FOR ELECTRICAL TORQUE SPECIFICATIONS SEE DWG NO. 128783-01-000

X-X FOR ELECTRICAL CALLOUTS SEE DWG NO. 121339-01-000

1FX	FORD 14,050# GVWR DIESEL	
1E2	ENTRANCE STEP-ELEC.	
16E	FORD CHASSIS 14,050 LB. GVWR	
265	CODES/STANDARDS-CSA/CMVSS	
1B1	CODES/STANDARDS-USA	
1B1	265	16E
FIRST USED	05 324F	
TITLE:	DO NOT SCALE DRAWING	
	WIRING INSTL-CHASSIS	
SHEET 2	PART NO	150251



- TIEDOWN 65451-05-000 (2)
- BOLT 51387-06-000 (4)
- NUT D39-05-00B (4)
- CLIP 44364-02-000 (4)
- BOOT 77479-01-000
- 77479-02-000

- BATTERY 110388-01-000 (2)
- TIEDOWN 65451-05-000
- 65451-06-000
- BOLT 51387-06-000 (3)
- NUT D39-05-00B (3)
- CLIP 44364-02-000 (3)
- BOOT 77479-01-000
- 77479-02-000

- BATTERY 110388-01-000
- TIEDOWN 65451-05-000
- BOLT 51387-06-000 (2)
- NUT D39-05-00B (2)
- CLIP 44364-02-000 (2)
- BOOT 77479-02-000

- CABLE ASM-BLK 133566-12-009 TO GROUND BAR
- BOLT C26-05-00B
- NUT D39-05-00B

- COVER-ELECTRICAL BOX 151539-01-CHT
- SEAL 92492-18-000

- LATCH 98196-01-0000 (2)
- RIVET H15-04-02R (4)

- CABLE ASM-BLK 133566-12-010 TO GROUND BAR
- BOLT C26-05-00B
- NUT D39-05-00B

- CABLE ASM-RED 141415-32-012 TO SOLENOID

- MODULE-SLIDEOUT CONTROL 138173-03-000
- SCREW 611-08-12U (2)
- COVER-MODULE 78040-04-000
- SCREW 611-10-10U (2)

- CABLE ASM-YEL 141415-52-010 TO RELAY

- CABLE ASM-BLK 133566-11-003

- CABLE ASM-RED 133566-01-003

- BATTERY 63739-01-000 (2)
- TIEDOWN 65451-05-000 (2)
- BOLT 51387-06-000 (4)
- NUT D39-05-00B (4)
- CLIP 44364-02-000 (4)
- BOOT 77479-01-000
- 77479-02-000

- CABLE ASM- 141415-51-014 TO SOLENOID

- BATTERY 63739-01-000 (12X)
- TIEDOWN 65451-05-000
- BOLT 51387-06-000 (2)
- NUT D39-05-00B (2)
- CLIP 44364-02-000 (2)
- BOOT 77479-02-000

- MODULE-SLIDEOUT CONTROL 138173-03-000
- SCREW 611-08-12U (2)
- COVER-MODULE 78040-04-000
- SCREW 611-10-10U (2)

- PLATE-SWITCH 144363-12-CHT
- NUT 112722-01-CHT (2)

- SWITCH-RADIO 108357-08-000
- ACTUATOR 108356-02-CHT

- SWITCH-BATTERY BOOST 108357-09-000
- ACTUATOR 108356-02-CHT

- LABEL-SWITCH 145731-01-000

- 4. CONNECT CABLE TO FORD POSITIVE CABLE ON TOP OF BATTERY POST AFTER REMOVING POSITIVE JUMPER CABLE LUG.
- 3. SEND FORD TEMPORARY BATTERY BOXES AND RED POSITIVE JUMPER CABLE LUG TO SALVAGE AFTER RELOCATING BATTERIES TO STEP BOX.
- 2. PLACE AROUND ENTIRE PERIMETER OF DOOR.
- 1. REMOVE FORD SUPPLIED BATTERIES FROM FRAME RAIL AND INSTALL IN STEP BOX. REROUTE FORD SUPPLIED BATTERY CABLES TO STEP BOX.

- CABLE ASM-BLK 133566-12-010 TO GROUND BAR

- TO GROUND BAR BOLT C26-05-00B (2)
- NUT D39-05-00B (2)

- 1FX FORD 14,050# GVWR DIESEL
- 22W BATTERY-SECOND
- 12X BATTERY-ONE
- 16E FORD CHASSIS 14,050 LB. GVWR
- 265 CODES/STANDARDS-CSA/CMVSS
- 1B1 CODES/STANDARDS-USA

FIRST USED	05 324F
DO NOT SCALE DRAWING	
TITLE: WIRING INSTL-CHASSIS	
SHEET 3	PART NO 150251

NOTES: