



DANGER

Danger of electrical shock, burns or death. Always remove all power sources before attempting any repair, service or diagnostic work. Power can be present from shore power, generator, inverter or battery. All power sources must be disabled and secured before performing any service.



CAUTION

If you lack the skills, tools or equipment to perform diagnostic or repair work leave such work to an authorized Winnebago Industries dealer or other qualified shop.

| 8 | | 7 | 6 | 5 | 4 | 3 | 2 |
|---------------------|---------|---------------|---------------|---------------|---------------|---------------|---------------|
| | | 322E | 322R | 324F | 324V | 326A | 327L |
| GROUND | 8-G | 136145-02-015 | 136145-02-023 | 136145-02-020 | 136145-02-016 | 136145-02-009 | 136145-02-015 |
| WIRE ASM | 110V US | 151133-01-000 | 150432-01-000 | 145478-01-000 | 142933-01-000 | 148687-01-000 | 151144-01-000 |
| WIRE ASM | 110V CA | 151133-02-000 | 150432-02-000 | 145478-02-000 | 142933-02-000 | 148687-02-000 | 151144-02-000 |
| GENERATOR CABLE ASM | UL | X | X | 136137-01-036 | 136137-01-020 | X | X |
| | CA | X | X | 136138-01-036 | 136138-01-020 | X | X |

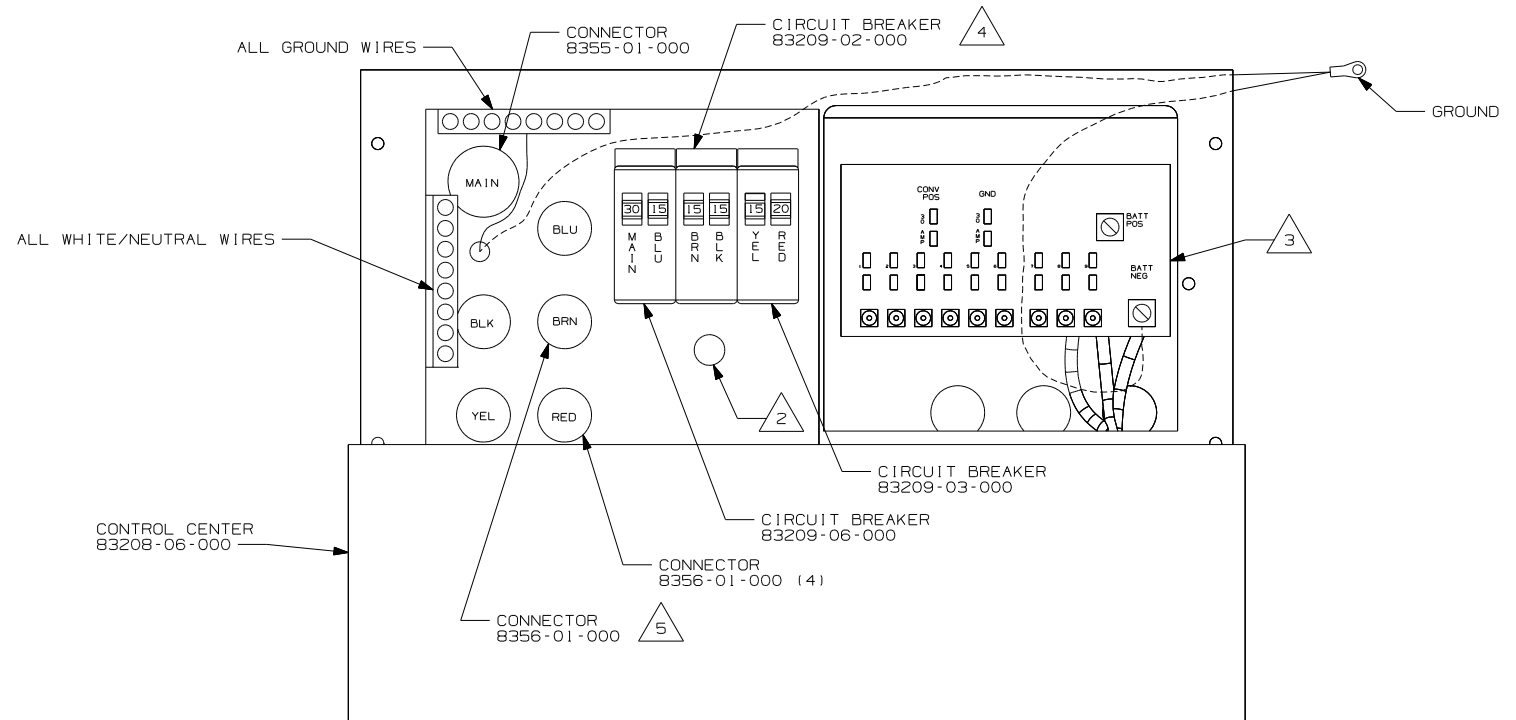
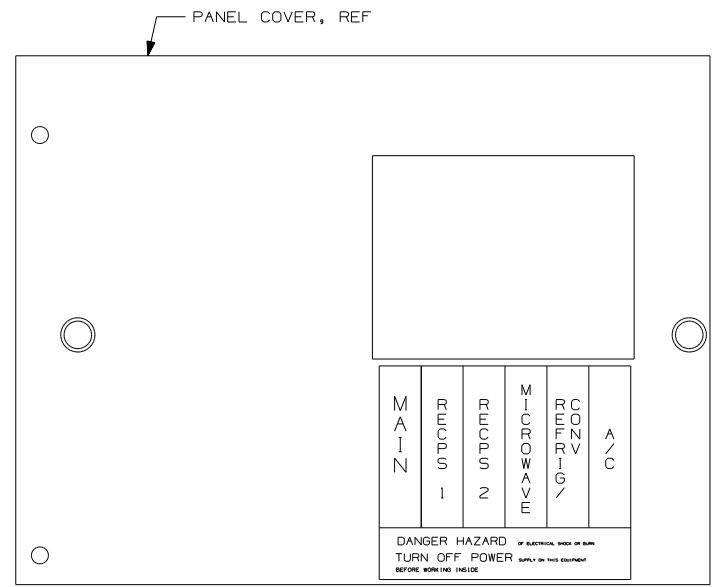
40N 526
40N 526

| | | 329B/329SB | 329K | 331C/331SC | 331T/331ST | 332G |
|---------------------|---------|---------------|---------------|-----------------------------|-----------------------------|---------------|
| GROUND | 8-G | 136145-02-015 | 136145-02-012 | 136145-02-022 | 136145-02-022 | 136145-02-012 |
| WIRE ASM | 110V US | 149036-01-000 | 150264-01-000 | 149885-01 | 149885-01 | 150076-01-000 |
| WIRE ASM | 110V CA | 149036-02-000 | 150264-02-000 | 149885-02 | 149885-02 | 150076-02-000 |
| GENERATOR CABLE ASM | UL | 136137-01-025 | 136137-01-025 | X | X | 136137-01-042 |
| | CA | 136138-01-025 | 136138-01-025 | X | X | 136138-01-042 |
| THROW-IN #1 | UL | X | X | 136131-03-006 \triangle_6 | 136131-03-006 \triangle_6 | X |
| | CA | X | X | 136134-03-006 \triangle_6 | 136134-03-006 \triangle_6 | X |
| THROW-IN #2 | UL | X | X | 136131-03-065 | 136131-03-075 | X |
| | CA | X | X | 136134-03-065 | 136134-03-075 | X |

40N 526
40N 526

| | | 723D | 726A |
|---------------------|---------|---------------|---------------|
| GROUND | 8-G | 136145-02-020 | 136145-02-014 |
| WIRE ASM | 110V US | 148693-01-000 | 150014-01-000 |
| WIRE ASM | 110V CA | 148693-02-000 | 150014-02-000 |
| GENERATOR CABLE ASM | UL | 136137-01-035 | 136137-01-038 |
| | CA | 136138-01-035 | 136138-01-038 |
| THROW-IN #1 | UL | X | 136131-03-006 |
| | CA | X | 136134-03-006 |
| THROW-IN #2 | UL | X | X |
| | CA | X | X |

40N
40N
40B
40B



- 40B INVERTER AC/DC-300 WATT
- 40N GEN-4.0KW-ONANGAS-MICROQUIET
- 526 GEN-3.6KW ONAN LP MICROQUIET
- 265 CODES/STANDARDS-CSA/CMVSS
- 1B1 CODES/STANDARDS USA

1B1 265

WINNEBAGO INDUSTRIES, INC. COPYRIGHT 2004

| | |
|------|-----------------------------------|
| DFTR | ORIG. DATE |
| CHKR | ALL DIMENSIONS ARE IN MILLIMETERS |
| P.E. | |
| M.E. | FIRST USED |
| DSNR | 05 300/700-SER |

UNSPECIFIED TOLERANCES ARE: MATERIAL:

WHOLE DIM (X) :
 ONE-PLACE (X.X) :
 TWO-PLACE (X.XX) :
 ANGLE :

THIRD ANGLE PROJECTION

DO NOT SCALE DRAWING

TITLE: LOAD CENTER/ATS ASM

SHEET 1 OF 2 PART NO 148507

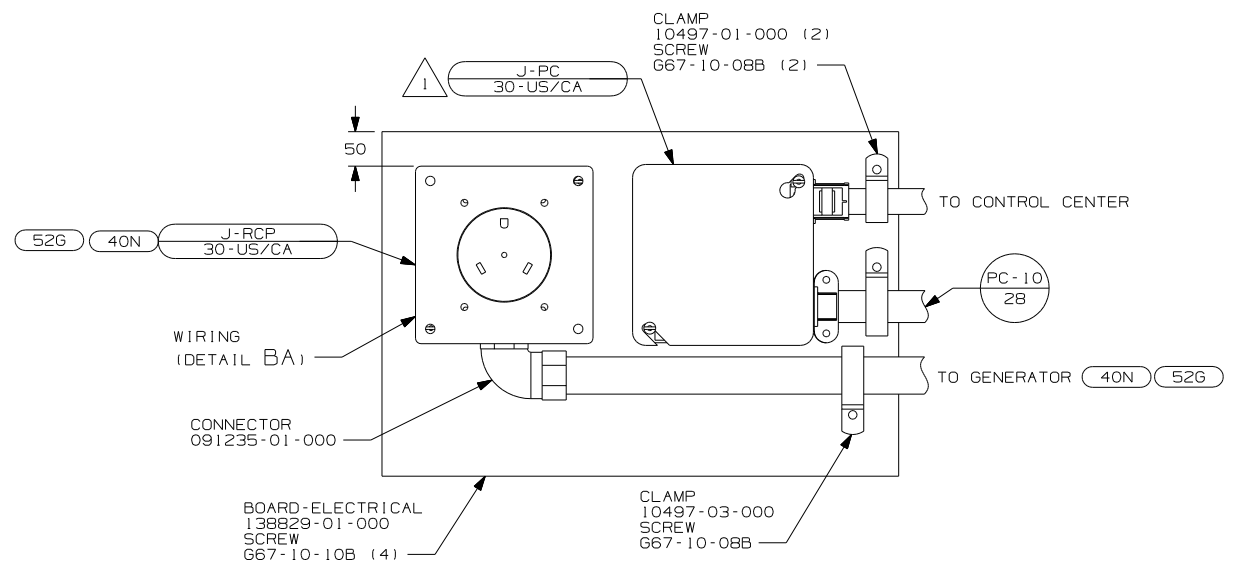
REF: 1 1/10/2005

- \triangle_5 NOT USED WITH 322R
- \triangle_4 FOR 322R USE CIRCUIT BREAKER 83209-01-000
- \triangle_3 SEE WIRING INSLT-BODY, 12V FOR ADDITIONAL INFORMATION.
- \triangle_2 SECURE WIRES TO BACKSIDE OF LOAD CENTER WITH WIRE TIE 116673-01-000.

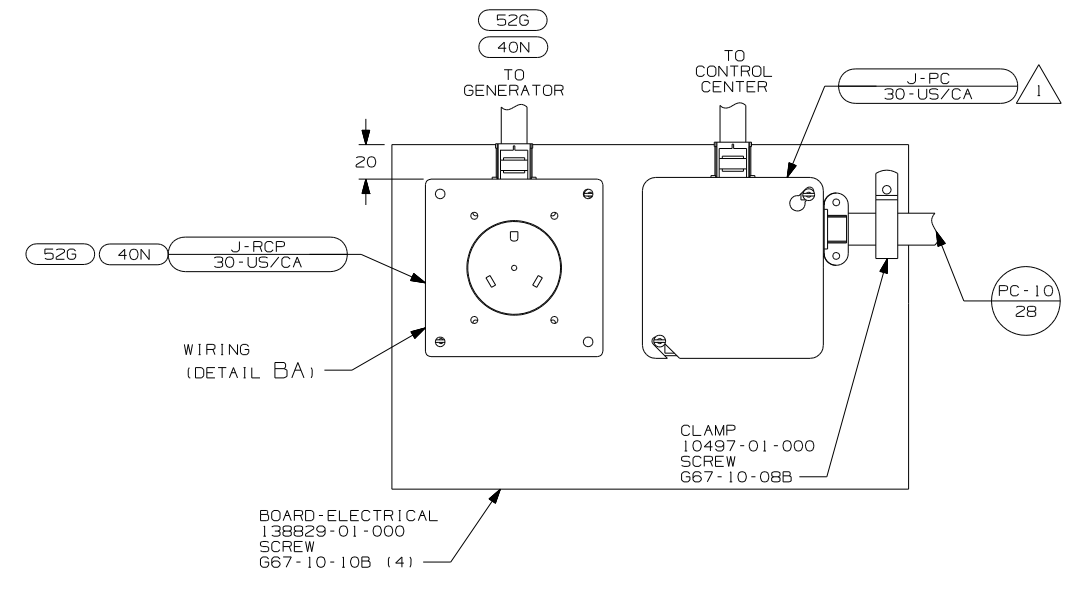
\triangle_6 FOR CONNECTOR INSTALLATION SEE DETAIL BE

1. ALL GROUND WIRES TO BE COVERED WITH TUBING 8041-02-000.

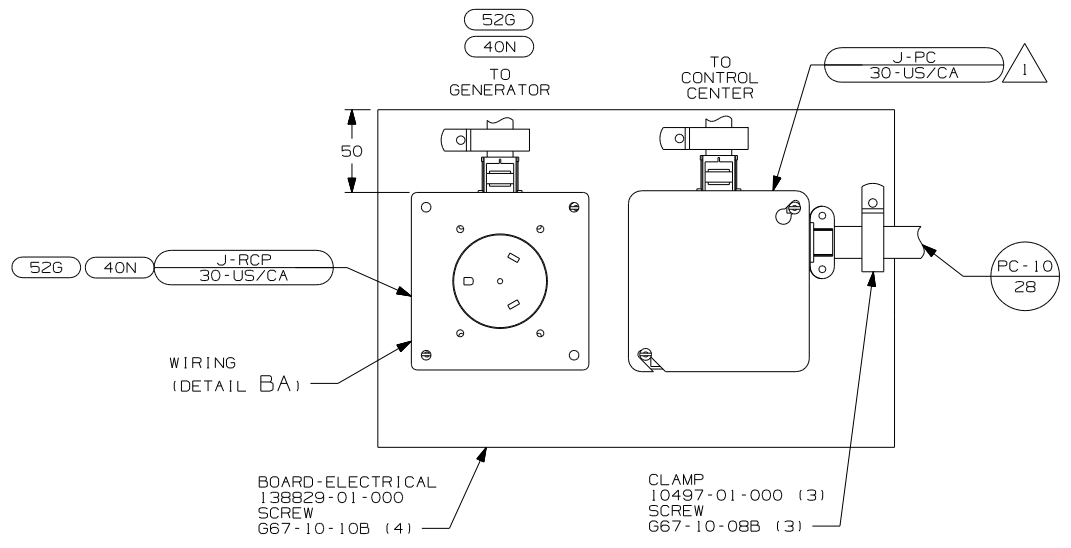
FOR ELECTRICAL CALLOUTS SEE DWG NO. 121339-01-000



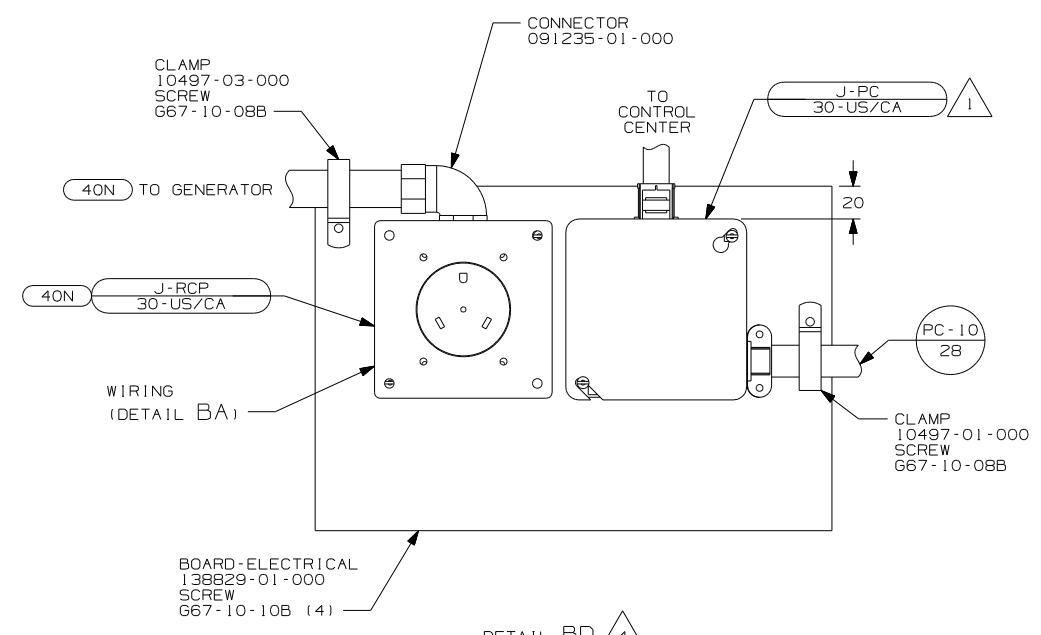
DETAIL BB 2



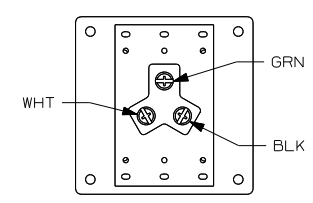
DETAIL BC 3



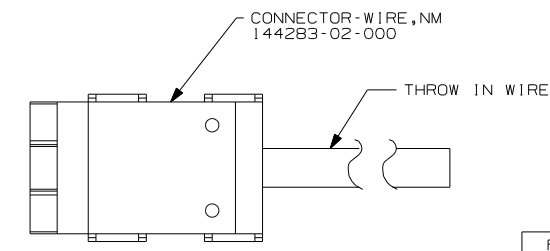
DETAIL BF 5



DETAIL BD 4



DETAIL BA (BACK VIEW)



DETAIL BE

- NOTES:
- 5 USED WITH 723D, 726A.
 - 4 USED WITH 329B, 329K, 329SB.
 - 3 USED WITH 322R, 322E, 324V, 332G.
 - 2 USED WITH 324F, 326A, 331C, 331T, 327L 331SC & 331ST.
 - 1 CONNECT BLK TO BLK, WHT TO WHT, AND GRNDS TO GRNDS.

- 52G GEN-3.6KW ONAN LP MICROQUIET
- 40N GEN-4.0KW-ONAN-GAS-MICROLITE
- 265 CODES/STANDARDS-CSA/CMVSS
- 1B1 CODES/STANDARDS USA

| | |
|-------------------------------|-------------------|
| 1B1 265 | |
| FIRST USED 05 300/700-SER | |
| DO NOT SCALE DRAWING | |
| TITLE: LOAD CENTER/ATS ASM | |
| SHEET 2 | PART NO 148507 |

FOR ELECTRICAL TORQUE SPECIFICATIONS SEE DWG NO. 128783-01-000

FOR ELECTRICAL CALLOUTS SEE DWG NO. 121339-01-000