



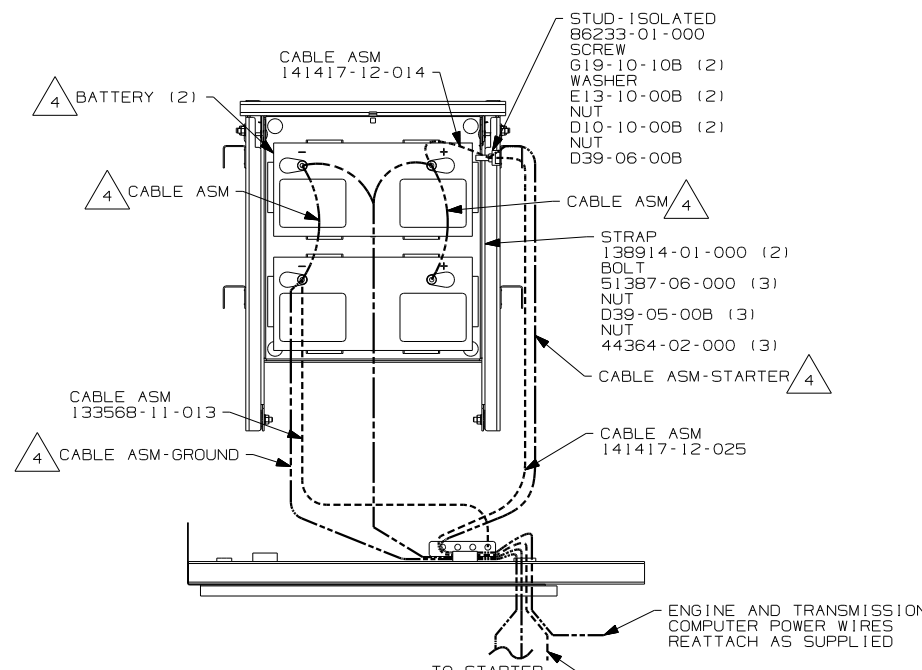
**DANGER**

**Danger of electrical shock, burns or death.** Always remove all power sources before attempting any repair, service or diagnostic work. Power can be present from shore power, generator, inverter or battery. All power sources must be disabled and secured before performing any service.

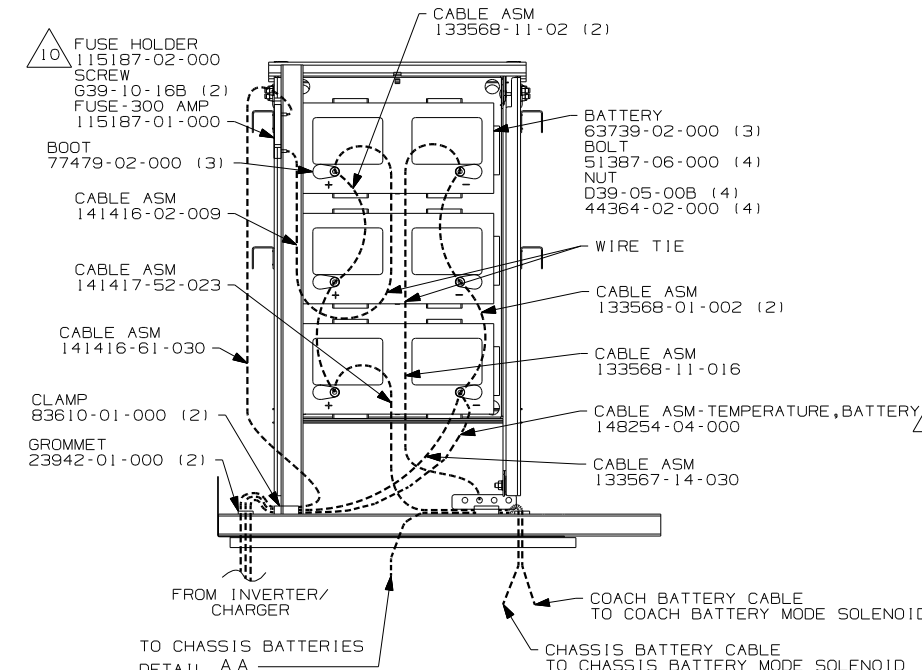


**CAUTION**

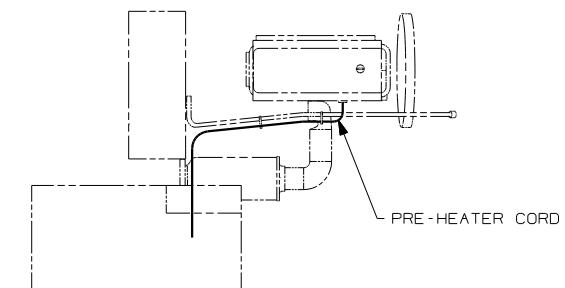
If you lack the skills, tools or equipment to perform diagnostic or repair work leave such work to an authorized Winnebago Industries dealer or other qualified shop.



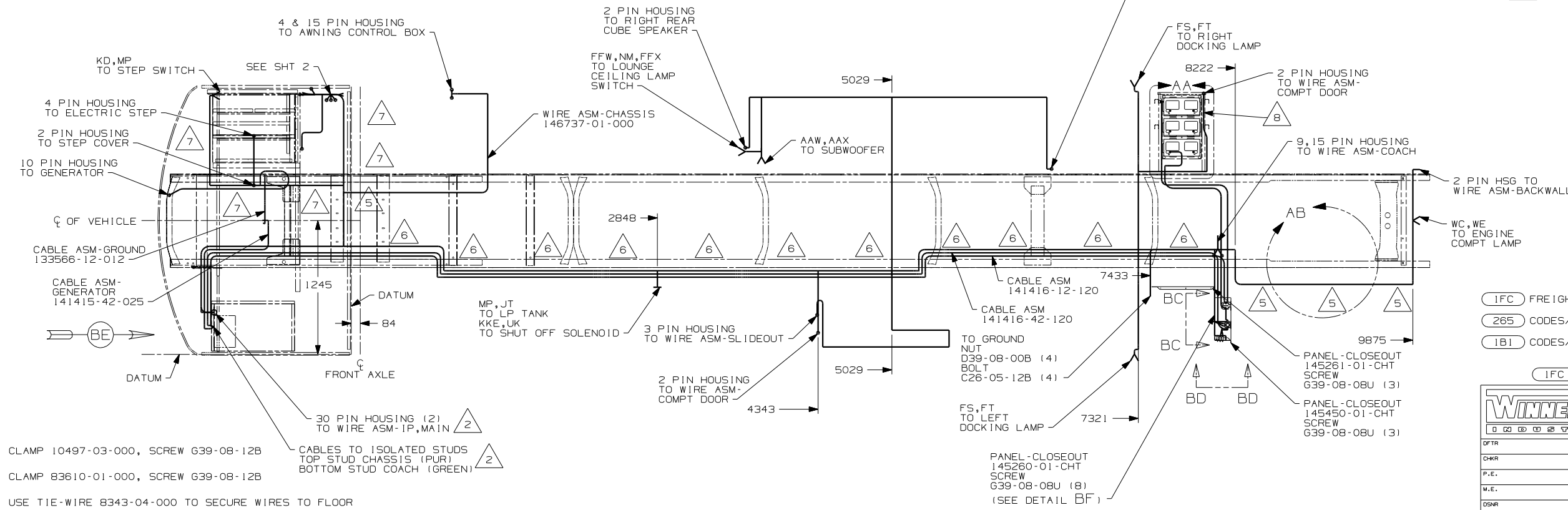
DETAIL AA  
(COACH BATTERIES  
NOT SHOWN)



DETAIL AA  
(CHASSIS BATTERIES  
NOT SHOWN)



VIEW AB 3



- 7 CLAMP 10497-03-000, SCREW G39-08-12B
- 6 CLAMP 83610-01-000, SCREW G39-08-12B
- 5 USE TIE-WIRE 8343-04-000 TO SECURE WIRES TO FLOOR  
SUPPORT FRAME AT LEAST ONCE EVERY 600MM.
- 4 SUPPLIED WITH CHASSIS
- 3 SECURE CORD AWAY FROM ALL MOVING PARTS AND EXHAUST  
WITH TIE-WIRE 93147-01-000 AS REQUIRED.
- 2 SEE WIRING INSTL-FRONT END FOR ADDITIONAL INFORMATION.

- 10 MOUNT FUSE HOLDER HORIZONTALLY  
20mm DOWN FROM FLOOR TUBE.
- 9 CONNECT RING TERMINAL OF CABLE ASM-TEMP, BATTERY  
TO NEGATIVE POST AS SHOWN AND ROUTE CABLE WITH  
NEGATIVE BATTERY CABLE TO INVERTER,
- 8 ROUTE AND CLAMP WIRE ASM ALONG  
UPPER TUBE IN BATTERY COMPT.

1. LEGEND: — WINNEBAGO: - - - - - CABLE: - - - - - CHASSIS SUPPLIED WIRING.

NOTES:

FOR ELECTRICAL  
TORQUE  
SPECIFICATIONS  
SEE DWG NO.  
128783-01-000

IFC FREIGHTLINER CHASSIS-24,850#  
265 CODES/STANDARDS-CSA/CMVSS  
1B1 CODES/STANDARDS-USA

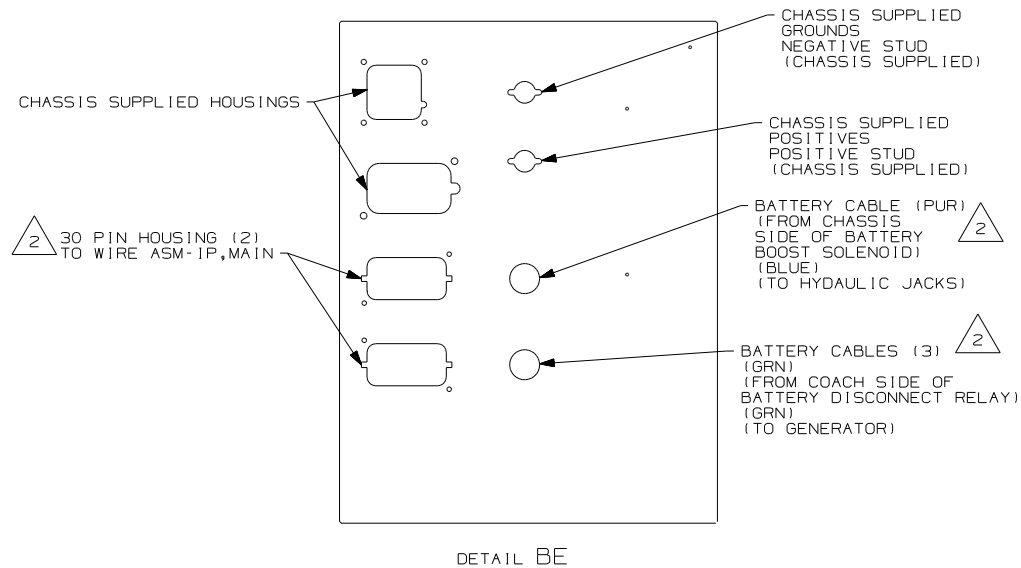
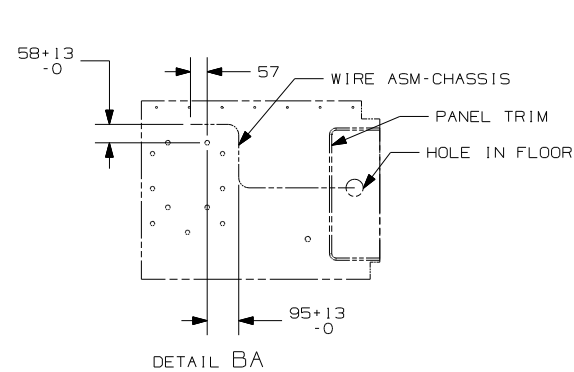
IFC 1B1 265

COPYRIGHT 2004 WINNEBAGO INDUSTRIES, INC.	
DTFR	ORIG. DATE
CHKR	ALL DIMENSIONS ARE IN MILLIMETERS
P.E.	
M.E.	FIRST USED
DSNR	04 S40WD
UNSPECIFIED TOLERANCES ARE:	
WHOLE DIM (X)	± 1
ONE-PLACE (X.X)	± 1.5
TWO-PLACE (X.XX)	± 0.50
ANGLE	± 1°
THIRD ANGLE PROJECTION	

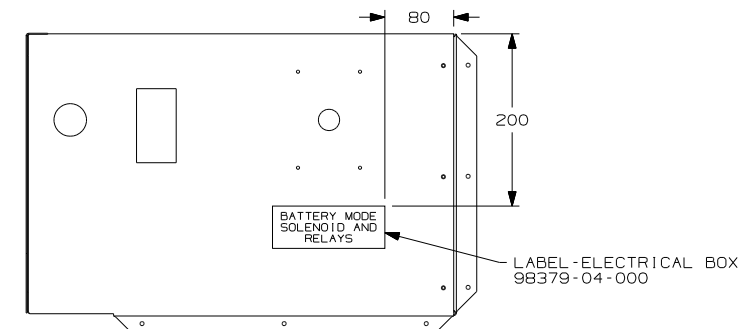
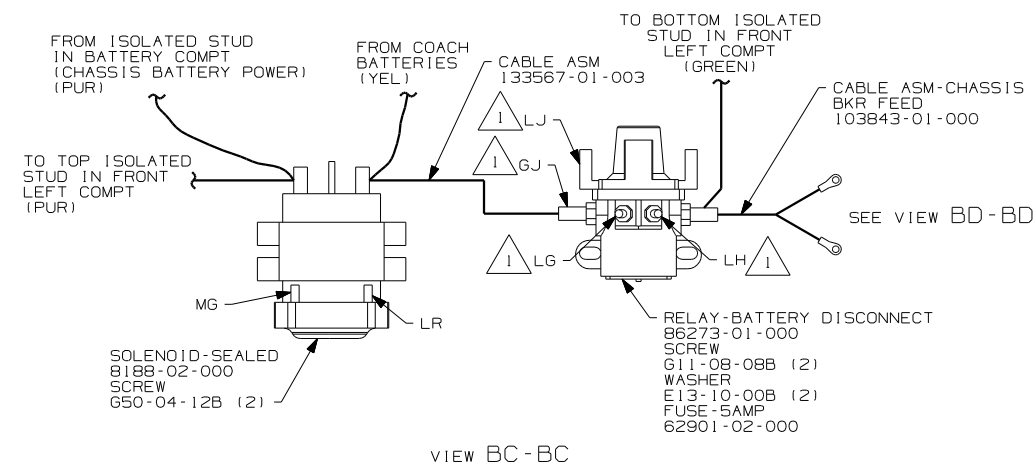
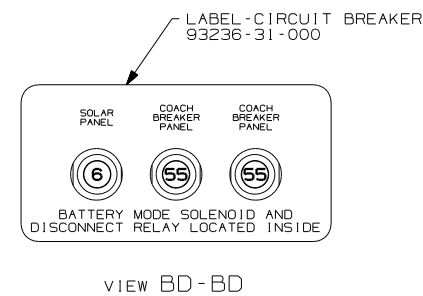
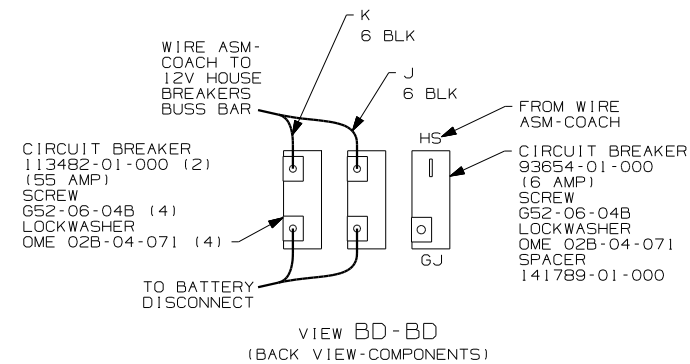
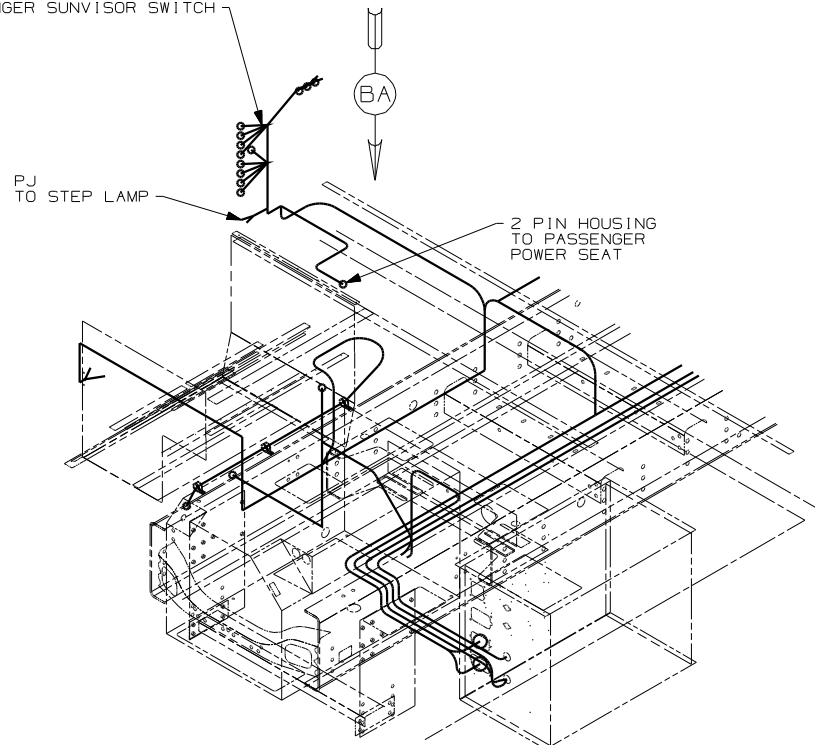
DO NOT SCALE DRAWING

TITLE: WIRING INSTL-CHASSIS

SHEET 1 of 2 PART NO 146738



- 8 PIN HOUSING (11)
- TO AWNING SELECTOR SWITCH
- TO AWNING CONTROL SWITCH
- TO STEP SWITCH
- TO BATTERY DISCONNECT SWITCH
- TO COMPT DOOR LOCK SWITCH
- TO DOOR LOCK SWITCH
- TO PORCH LAMP SWITCH
- TO LOUNGE CEILING LAMP SWITCH
- TO STEP COVER SWITCH
- TO PASSENGER SUNVISOR SWITCH



- 2 SEE WIRING INSTL-FRONT END FOR ADDITIONAL INFORMATION.
- 1 CIRCUITS BRANCH FROM WIRE ASM-CHASSIS.

NOTES:

FOR ELECTRICAL TORQUE SPECIFICATIONS SEE DWG NO. 128783-01-000

FIRST USED		04 S40WD	
		DO NOT SCALE DRAWING	
TITLE		WIRING INSTL-CHASSIS	
SHEET 2	PART NO	146738	