



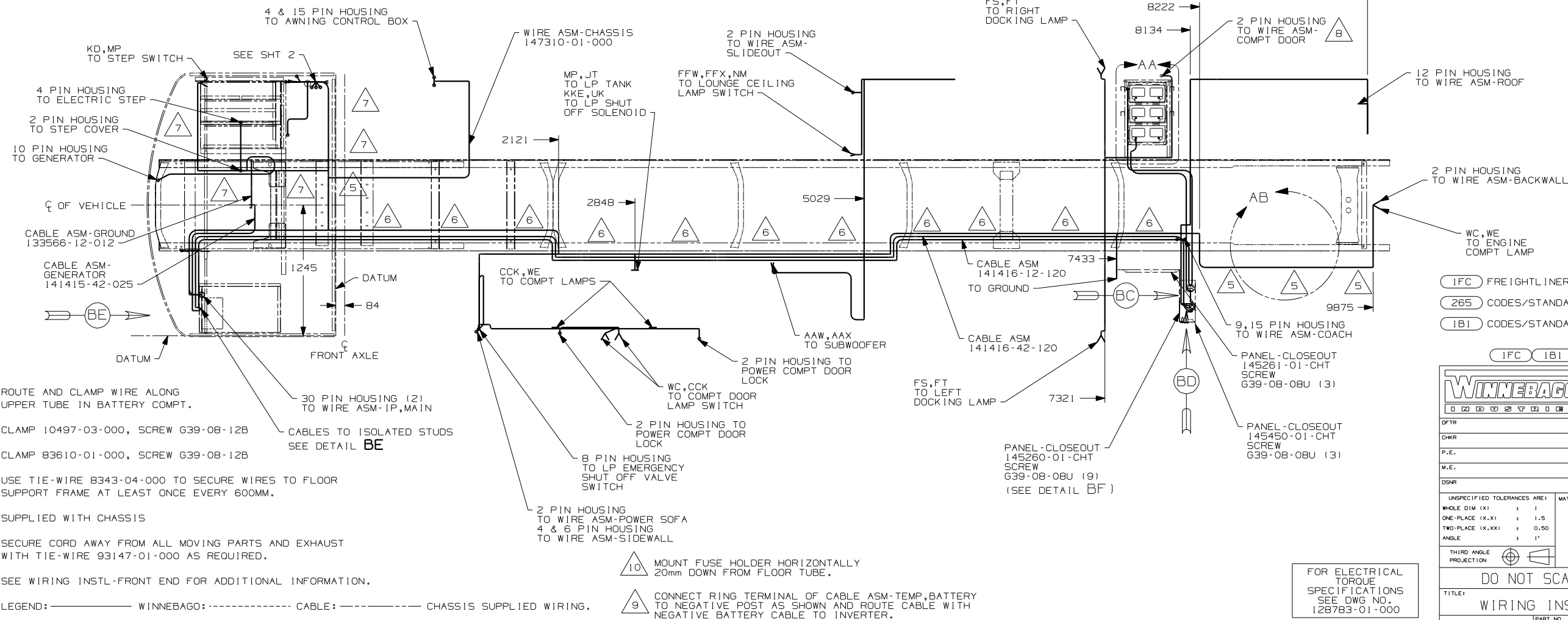
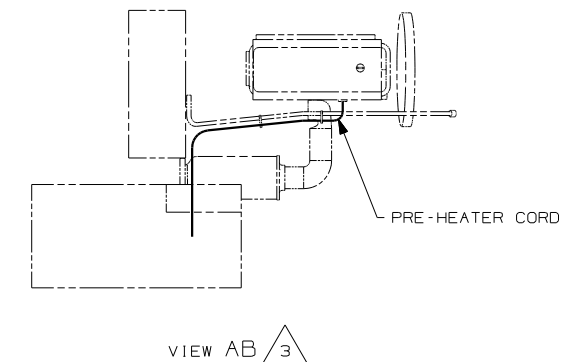
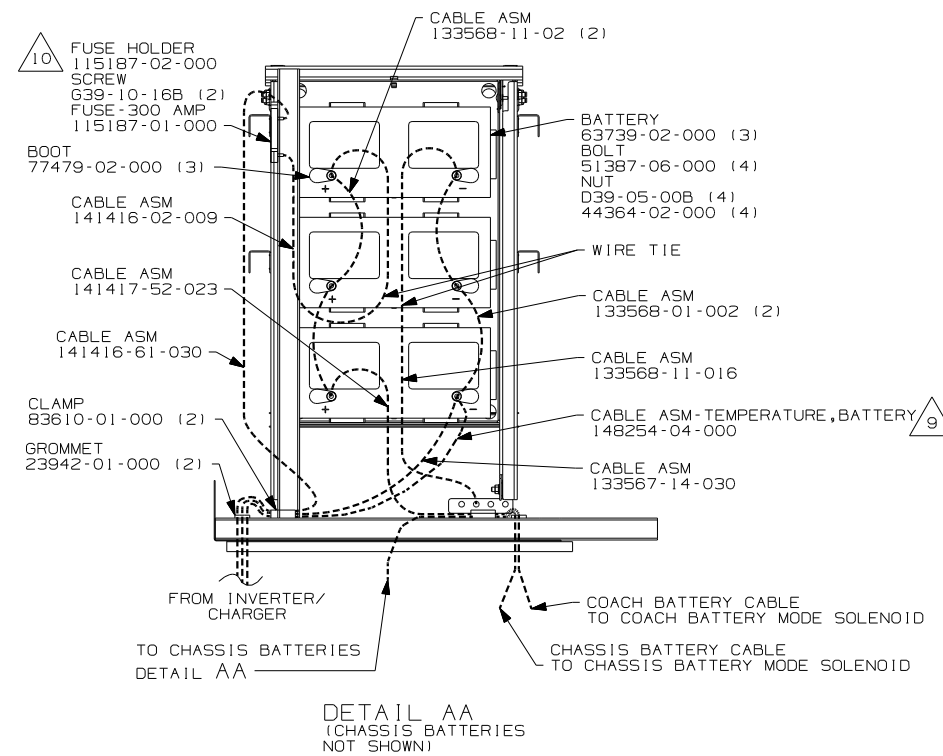
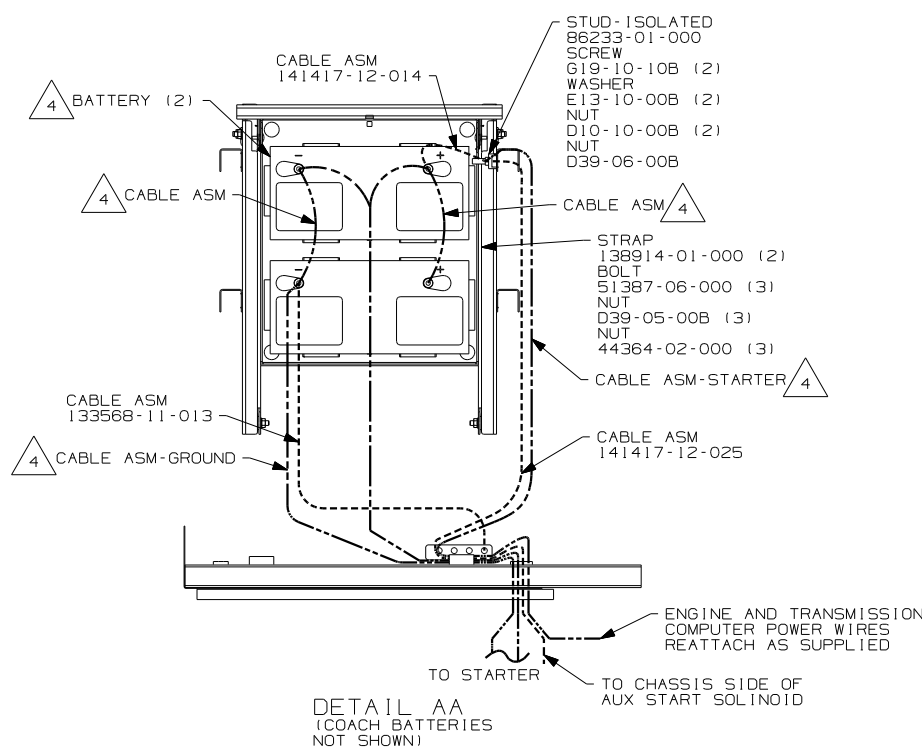
DANGER

Danger of electrical shock, burns or death. Always remove all power sources before attempting any repair, service or diagnostic work. Power can be present from shore power, generator, inverter or battery. All power sources must be disabled and secured before performing any service.



CAUTION

If you lack the skills, tools or equipment to perform diagnostic or repair work leave such work to an authorized Winnebago Industries dealer or other qualified shop.


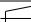


FREIGHTLINER CHASSIS-24,850#
 CODES/STANDARDS-CSA/CMVSS
 CODES/STANDARDS-USA

IFC IBI 265

WINNEBAGO

COPYRIGHT 2004
WINNEBAGO
INDUSTRIES, INC.

DFTF		ORIG. DATE	
CHKR		ALL DIMENSIONS ARE IN MILLIMETERS	
P.E.		FIRST USED	
W.E.		04 S40KD	
DSNR			
UNSPECIFIED TOLERANCES ARE:		MATERIAL:	
WHOLE DIM (X)	± 1		
ONE-PLACE (X,X1)	± 1.5		
TWO-PLACE (X,X,X1)	0.50		
ANGLE	± 1°		
THIRD ANGLE PROJECTION			

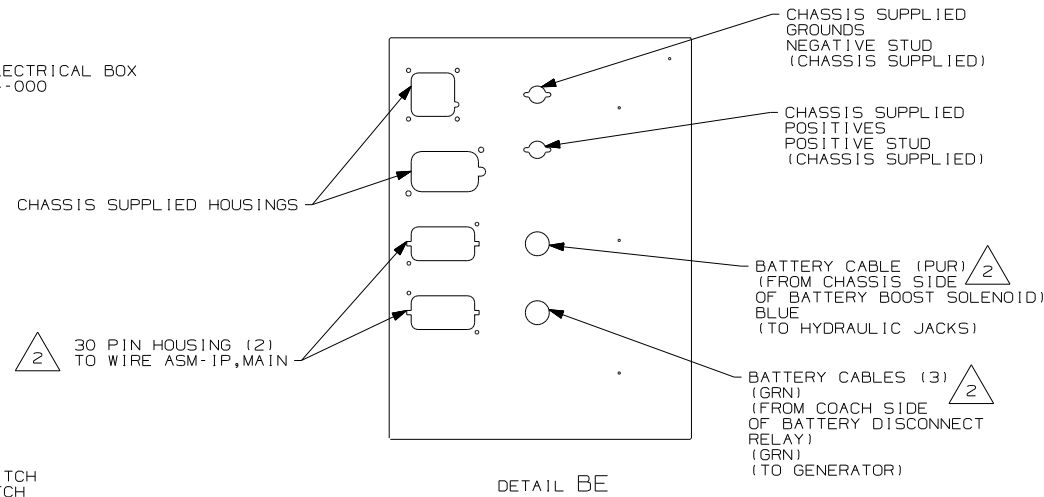
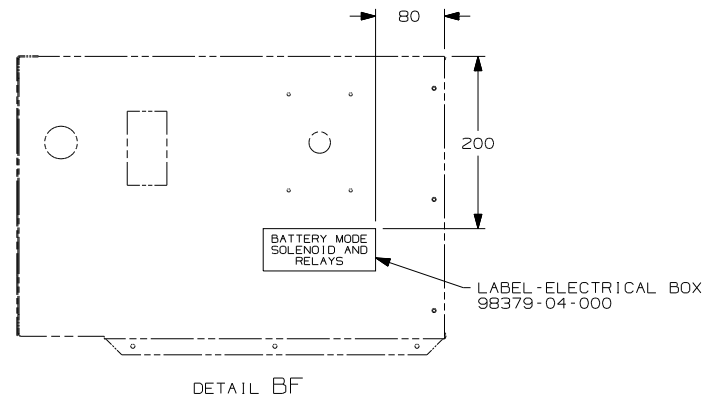
DO NOT SCALE DRAWING

TITLE: WIRING INSTL-CHASSIS

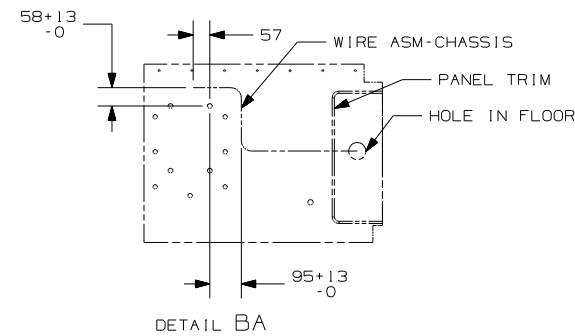
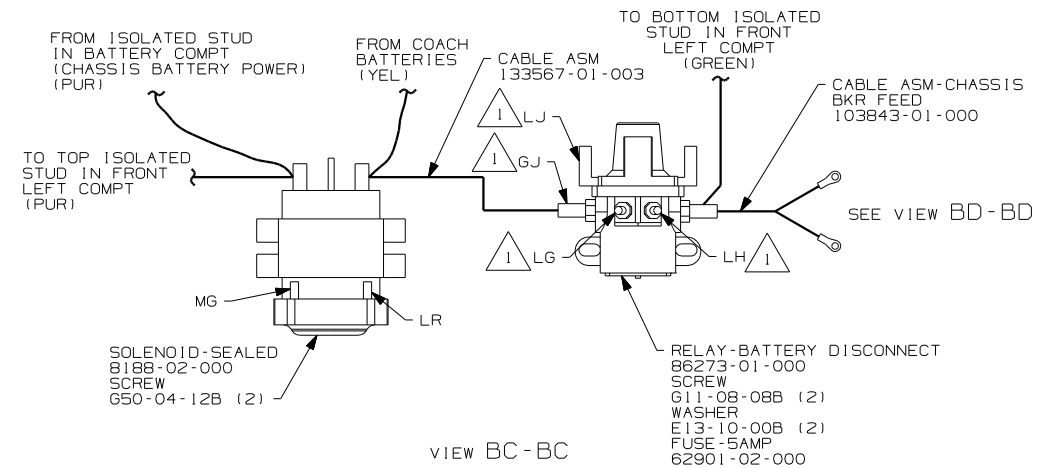
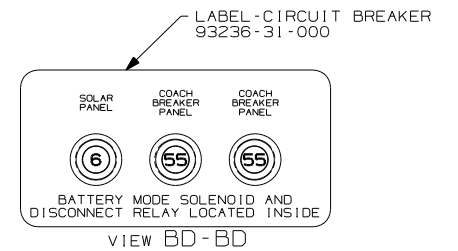
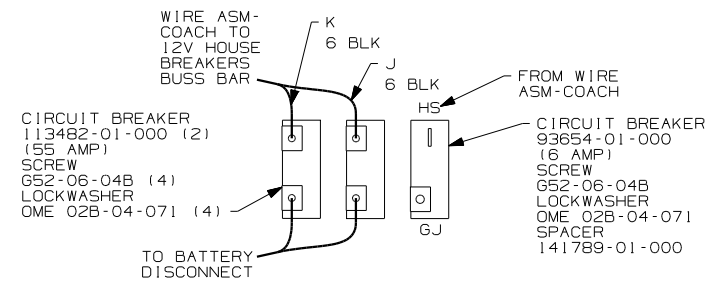
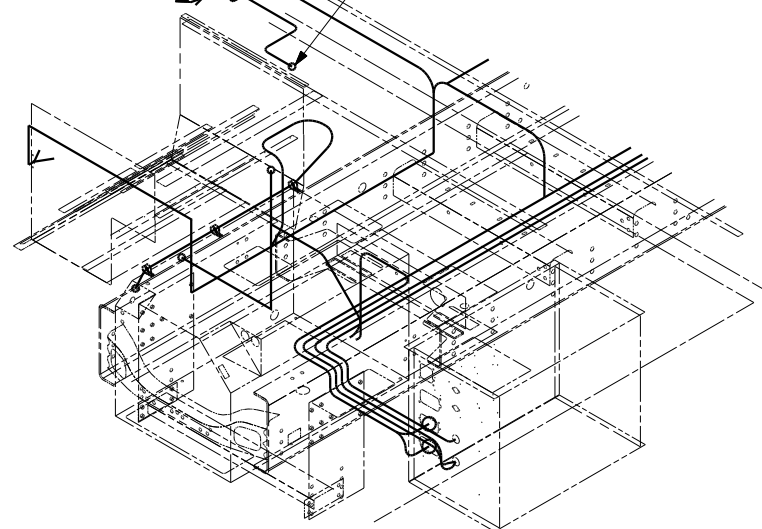
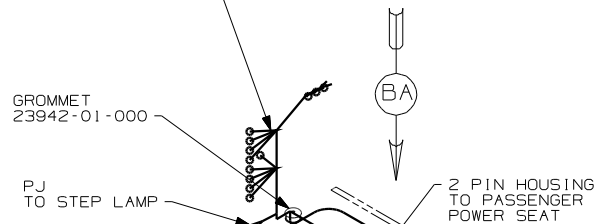
SHEET 1 OF 2	PART NO 147311
--------------	----------------

REF: 145017-F	1	3/24/2004
---------------	---	-----------

FOR ELECTRICAL
TORQUE
SPECIFICATIONS
SEE DWG NO.
128783-01-000



9 PIN HOUSING (11)
TO AWNING SELECTOR SWITCH
TO AWNING CONTROL SWITCH
TO STEP SWITCH
TO BATTERY DISCONNECT SWITCH
TO COMPT DOOR LOCK SWITCH
TO DOOR LOCK SWITCH
TO PORCH LAMP SWITCH
TO LOUNGE CEILING LAMP SWITCH
TO STEP COVER SWITCH
TO PASSENGER SUNVISOR SWITCH



2 SEE WIRING INSTL-FRONT END FOR ADDITIONAL INFORMATION.

1 CIRCUITS BRANCH FROM WIRE ASM-CHASSIS.

NOTES:

FOR ELECTRICAL TORQUE SPECIFICATIONS SEE DWG NO. 128783-01-000

FIRST USED		04 S40KD
DO NOT SCALE DRAWING		
TITLE		WIRING INSTL-CHASSIS
SHEET 2	PART NO	147311