



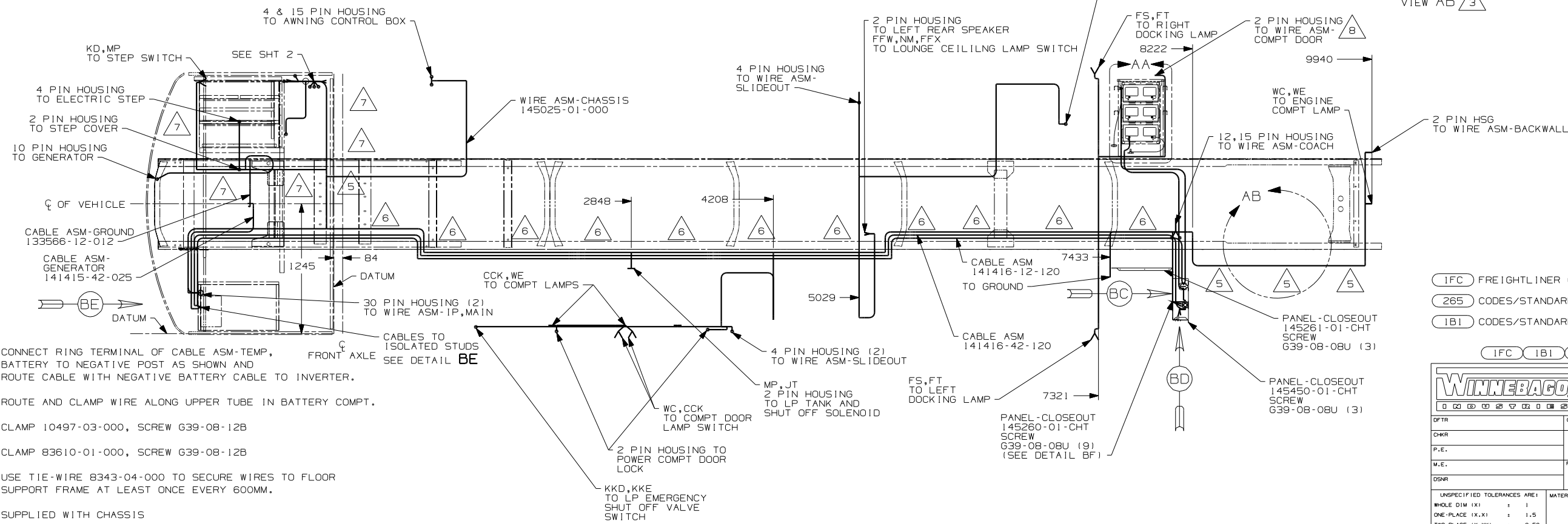
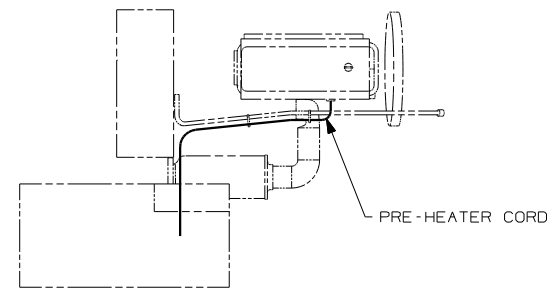
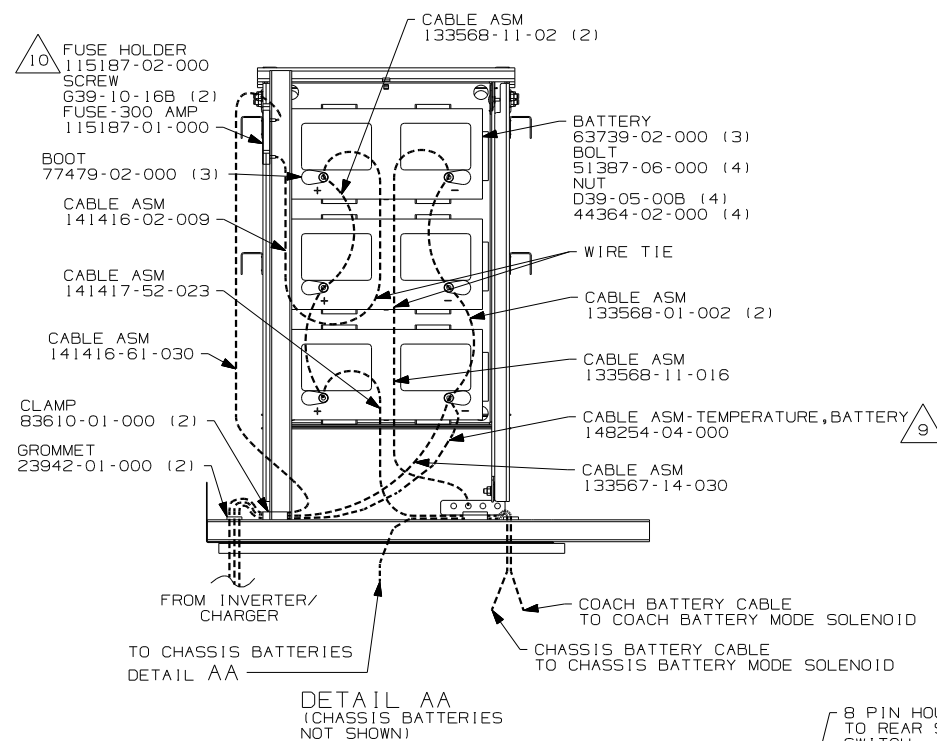
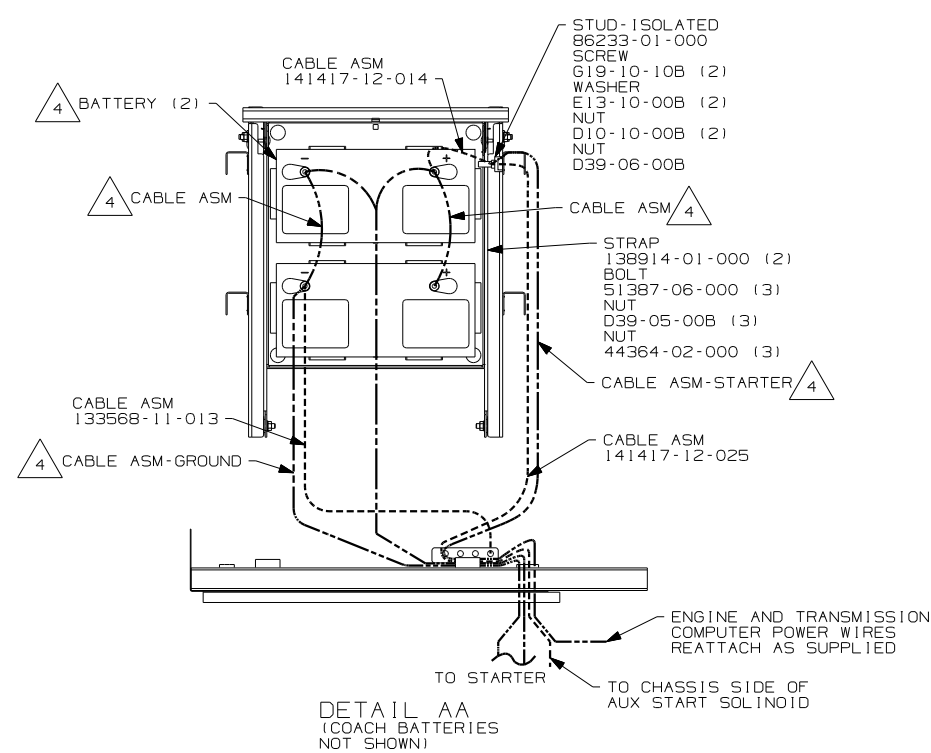
DANGER

Danger of electrical shock, burns or death. Always remove all power sources before attempting any repair, service or diagnostic work. Power can be present from shore power, generator, inverter or battery. All power sources must be disabled and secured before performing any service.



CAUTION


If you lack the skills, tools or equipment to perform diagnostic or repair work leave such work to an authorized Winnebago Industries dealer or other qualified shop.



- 9 CONNECT RING TERMINAL OF CABLE ASM-TEMP. FRONT AXLE BATTERY TO NEGATIVE POST AS SHOWN AND ROUTE CABLE WITH NEGATIVE BATTERY CABLE TO INVERTER.
- 8 ROUTE AND CLAMP WIRE ALONG UPPER TUBE IN BATTERY COMPARTMENT.
- 7 CLAMP 10497-03-000, SCREW G39-08-12B
- 6 CLAMP 83610-01-000, SCREW G39-08-12B
- 5 USE TIE-WIRE 8343-04-000 TO SECURE WIRES TO FLOOR SUPPORT FRAME AT LEAST ONCE EVERY 600MM.
- 4 SUPPLIED WITH CHASSIS
- 3 SECURE CORD AWAY FROM ALL MOVING PARTS AND EXHAUST WITH TIE-WIRE 93147-01-000 AS REQUIRED.
- 2 SEE WIRING INSTL-FRONT END FOR ADDITIONAL INFORMATION.

1. LEGEND:----- WINNEBAGO:----- CABLE:----- CHASSIS SUPPLIED WIRING.

NOTES:

 MOUNT FUSE HOLDER HORIZONTALLY
20mm DOWN FROM FLOOR TUBE.

FOR ELECTRICAL
TORQUE
SPECIFICATIONS
SEE DWG NO.
128783-01-000

RELEASE		REV A	DATE	DWG NO	145017	
REV	ZONE	REVISION RECORD			DATE	OFTR-ORIG

S1,2

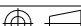
VIEW AB 

1FC FREIGHTLINER CHASSIS-24,850#
265 CODES/STANDARDS-CSA/CMVSS
1B1 CODES/STANDARDS-USA

IFC IB1 265



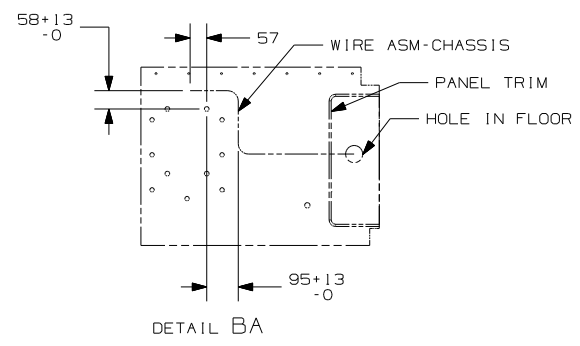
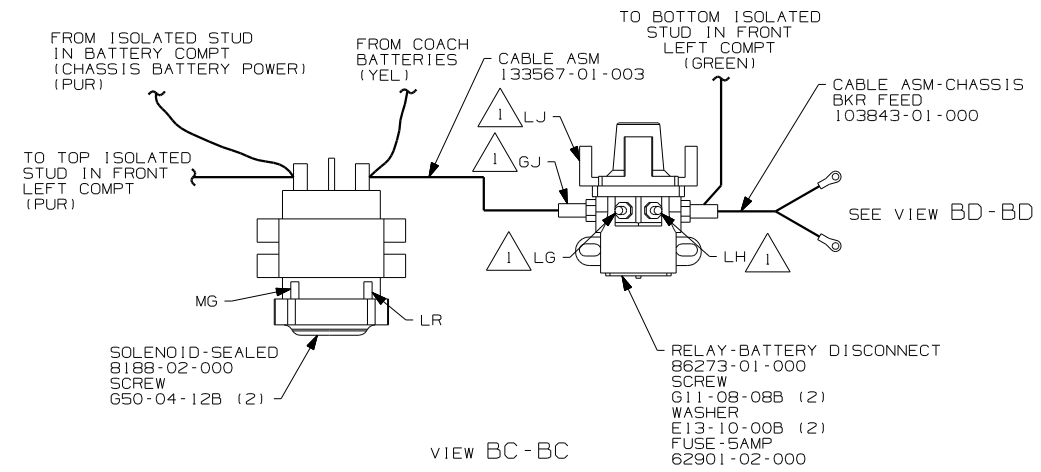
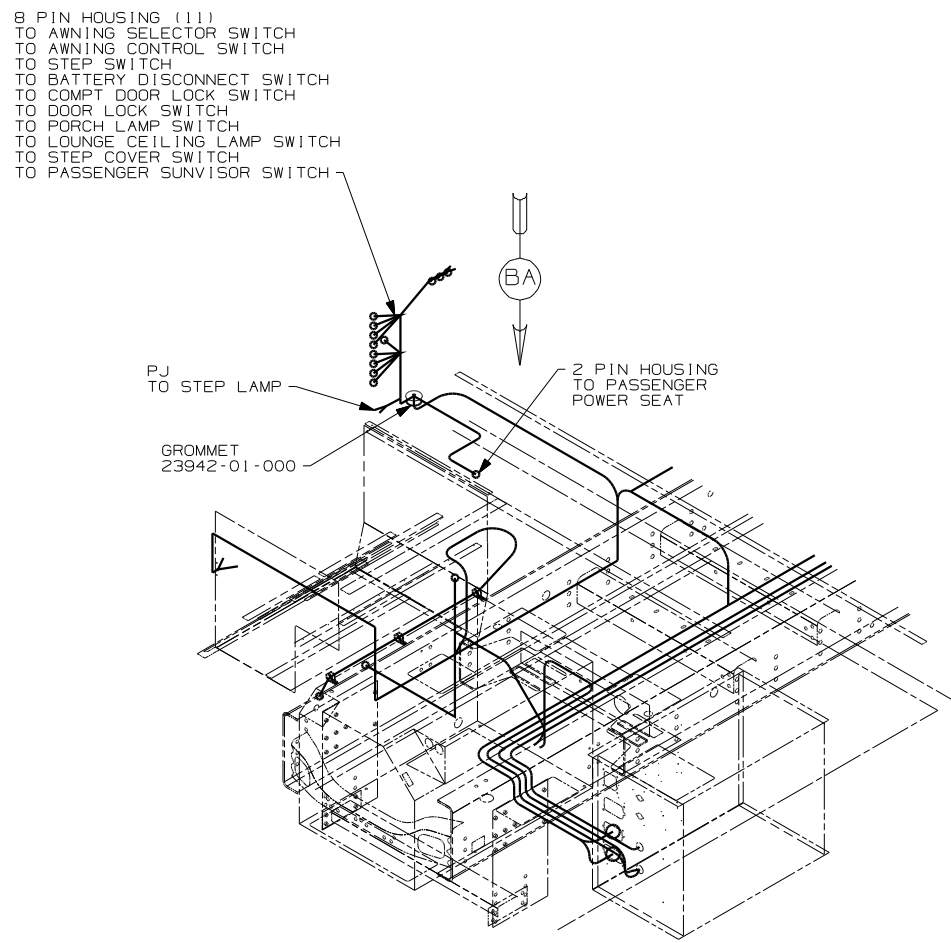
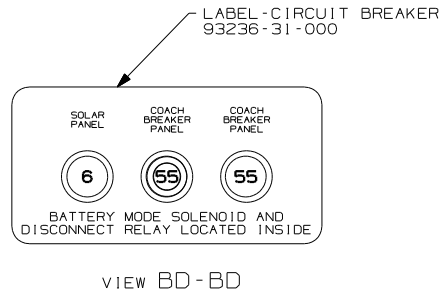
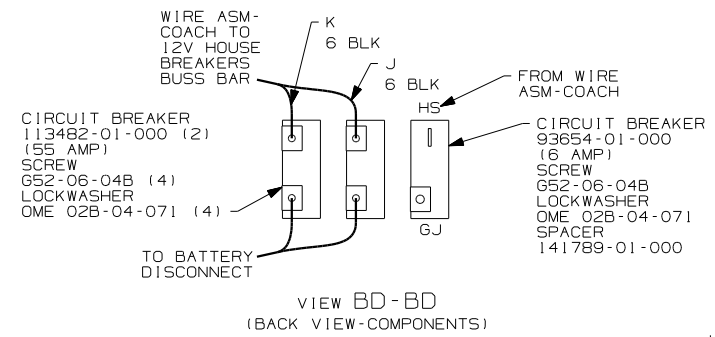
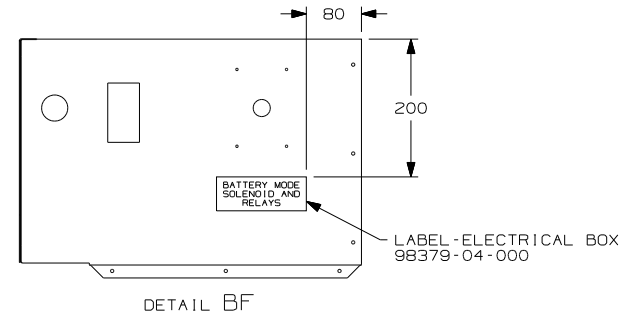
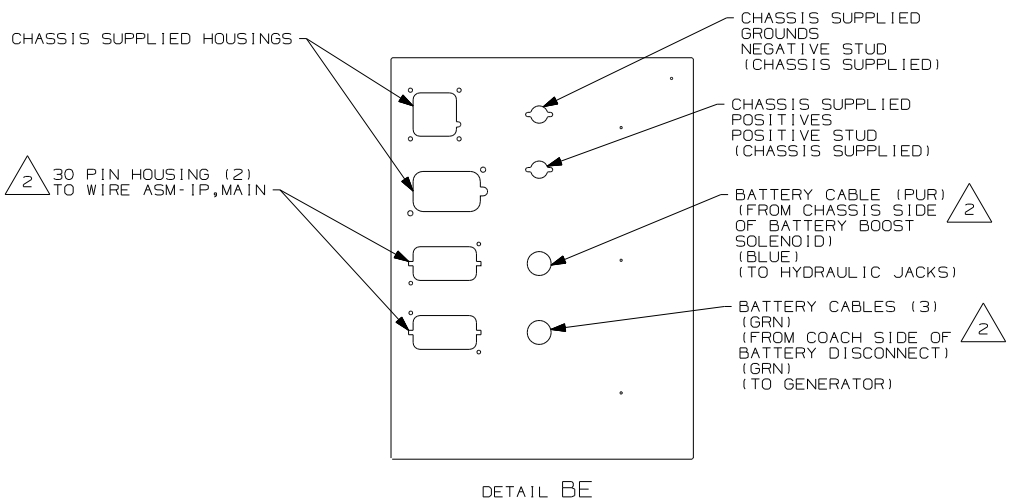
COPYRIGHT 2004
WINNEBAGO
INDUSTRIES, INC.

DFTR	ORIG. DATE
CHKR	ALL DIMENSIONS ARE IN MILLIMETERS
P.E.	
M.E.	FIRST USED
DSNR	04 S40AD
UNSPECIFIED TOLERANCES ARE:	MATERIAL:
WHOLE DIM (X) ± 1	
ONE-PLACE (X,X) ± 1.5	
TWO-PLACE (X,XX) ± 0.50	
ANGLE ± 1°	
THIRD ANGLE PROJECTION	

DO NOT SCALE DRAWING

TITLE:		WIRING INSTL-CHASSIS	
SHEET 1 OF 2		PART NO	145017

REF: 1 3/23/200.



2 SEE WIRING INSTL-FRONT END FOR ADDITIONAL INFORMATION.

1 CIRCUITS BRANCH FROM WIRE ASM-CHASSIS.

NOTES:

FOR ELECTRICAL TORQUE SPECIFICATIONS SEE DWG NO. 128783-01-000

FIRST USED		04 S40AD
DO NOT SCALE DRAWING		
TITLE		WIRING INSTL-CHASSIS
SHEET 2	PART NO	145017