



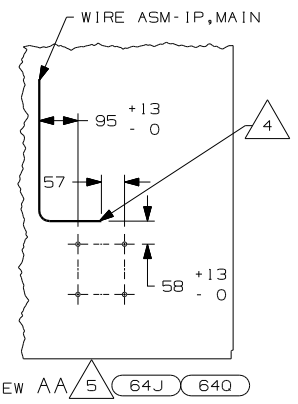
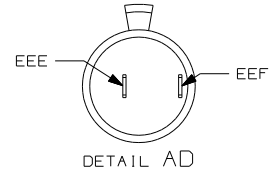
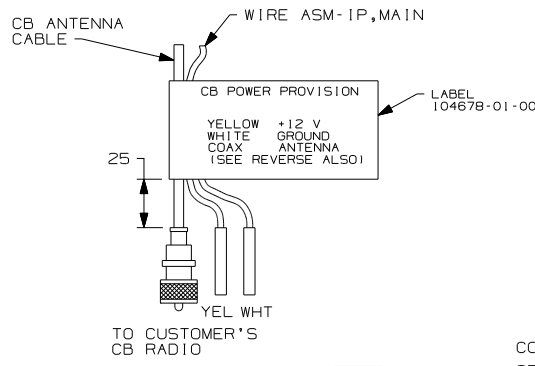
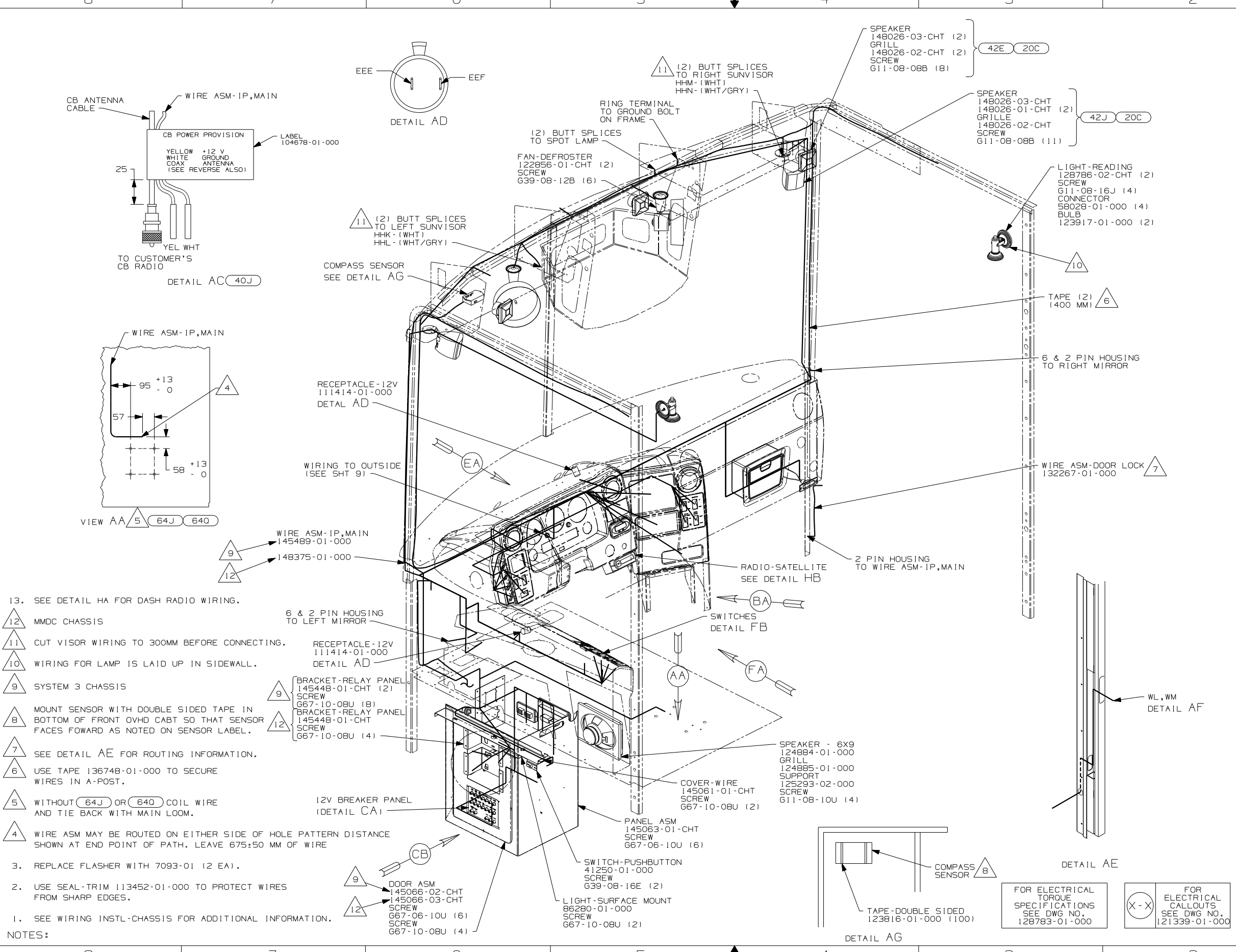
**DANGER**

**Danger of electrical shock, burns or death.** Always remove all power sources before attempting any repair, service or diagnostic work. Power can be present from shore power, generator, inverter or battery. All power sources must be disabled and secured before performing any service.



**CAUTION**

If you lack the skills, tools or equipment to perform diagnostic or repair work leave such work to an authorized Winnebago Industries dealer or other qualified shop.



- NOTES:
- SEE WIRING INSTL-CHASSIS FOR ADDITIONAL INFORMATION.
  - USE SEAL-TRIM 113452-01-000 TO PROTECT WIRES FROM SHARP EDGES.
  - REPLACE FLASHER WITH 7093-01 (2 EA).
  - WIRE ASM MAY BE ROUTED ON EITHER SIDE OF HOLE PATTERN DISTANCE SHOWN AT END POINT OF PATH. LEAVE 675±50 MM OF WIRE
  - WITHOUT (64J) OR (640) COIL WIRE AND TIE BACK WITH MAIN LOOM.
  - USE TAPE 136748-01-000 TO SECURE WIRES IN A-POST.
  - SEE DETAIL AE FOR ROUTING INFORMATION.
  - MOUNT SENSOR WITH DOUBLE SIDED TAPE IN BOTTOM OF FRONT OVHD CABT SO THAT SENSOR FACES FORWARD AS NOTED ON SENSOR LABEL.
  - SYSTEM 3 CHASSIS
  - WIRING FOR LAMP IS LAID UP IN SIDEWALL.
  - CUT VISOR WIRING TO 300MM BEFORE CONNECTING.
  - MMDC CHASSIS
  - SEE DETAIL HA FOR DASH RADIO WIRING.

- (20C) SOUND SYS. DLX. W/O-SURROUND
- (42J) TV-24" COLOR,STEREO W/REMOTE
- (42E) TV-27" COLOR,STEREO W/REMOTE
- (40J) CB RADIO PREP
- (092) SLIDEOUT ROOM - FRONT RIGHT
- (09L) SLIDEOUT ROOM - FRONT LEFT
- (640) SEAT PED-6-WAY POWER DRIVER
- (64J) SEAT PED-6-WAY DR/PASS POWER

(1B1) (265)

COPYRIGHT 2004 WINNEBAGO INDUSTRIES, INC.

D/FR	ORIG. DATE
CHKR	ALL DIMENSIONS ARE IN MILLIMETERS
P.E.	
M.E.	FIRST USED
DSNR	04 S-SERIES

UNSPECIFIED TOLERANCES ARE:  
 WHOLE DIM (X) :  
 ONE-PLACE (X.X) :  
 TWO-PLACE (X.XX) :  
 ANGLE :

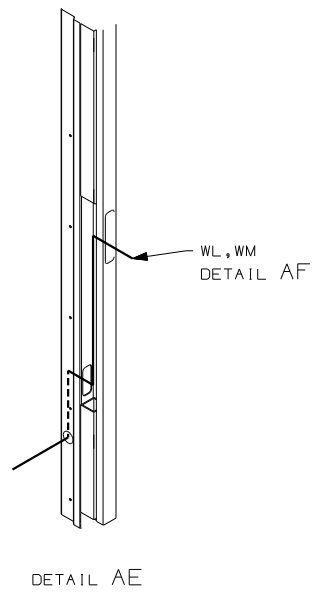
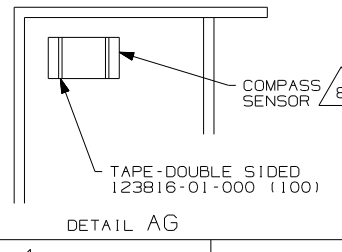
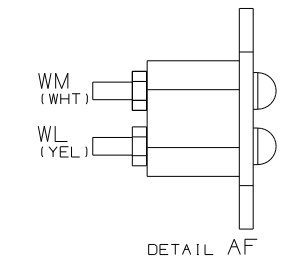
MATERIAL:  
 THIRD ANGLE PROJECTION

DO NOT SCALE DRAWING

TITLE: WIRING INSTL-FRONT END

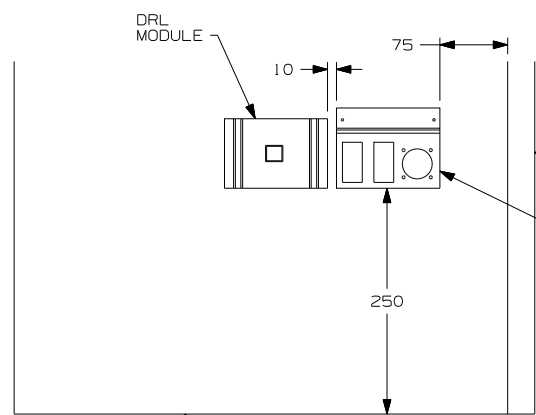
SHEET 1 OF 9 PART NO 144022

REF: 1 4/14/2004

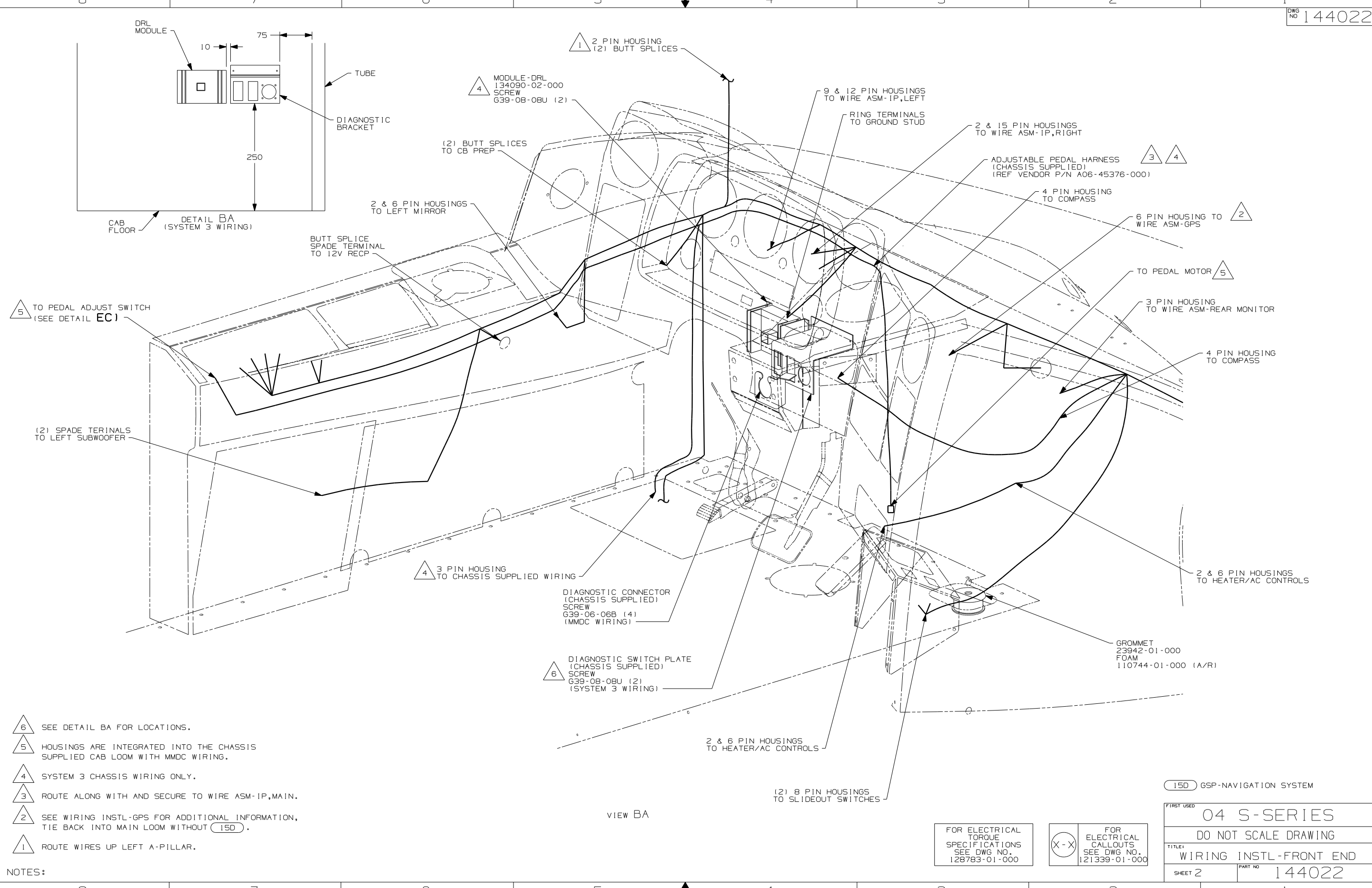


FOR ELECTRICAL TORQUE SPECIFICATIONS SEE DWG NO. 128783-01-000

(X-X) FOR ELECTRICAL CALLOUTS SEE DWG NO. 121339-01-000



DETAIL BA (SYSTEM 3 WIRING)



VIEW BA

- NOTES:
- △ 6 SEE DETAIL BA FOR LOCATIONS.
  - △ 5 HOUSINGS ARE INTEGRATED INTO THE CHASSIS SUPPLIED CAB LOOM WITH MMDC WIRING.
  - △ 4 SYSTEM 3 CHASSIS WIRING ONLY.
  - △ 3 ROUTE ALONG WITH AND SECURE TO WIRE ASM-IP, MAIN.
  - △ 2 SEE WIRING INSTL-GPS FOR ADDITIONAL INFORMATION, TIE BACK INTO MAIN LOOM WITHOUT 15D.
  - △ 1 ROUTE WIRES UP LEFT A-PILLAR.

FOR ELECTRICAL TORQUE SPECIFICATIONS SEE DWG NO. 128783-01-000

FOR ELECTRICAL CALLOUTS SEE DWG NO. 121339-01-000

15D GSP-NAVIGATION SYSTEM

FIRST USED	04 S-SERIES
TITLE	DO NOT SCALE DRAWING
TITLE	WIRING INSTL-FRONT END
SHEET 2	PART NO 144022

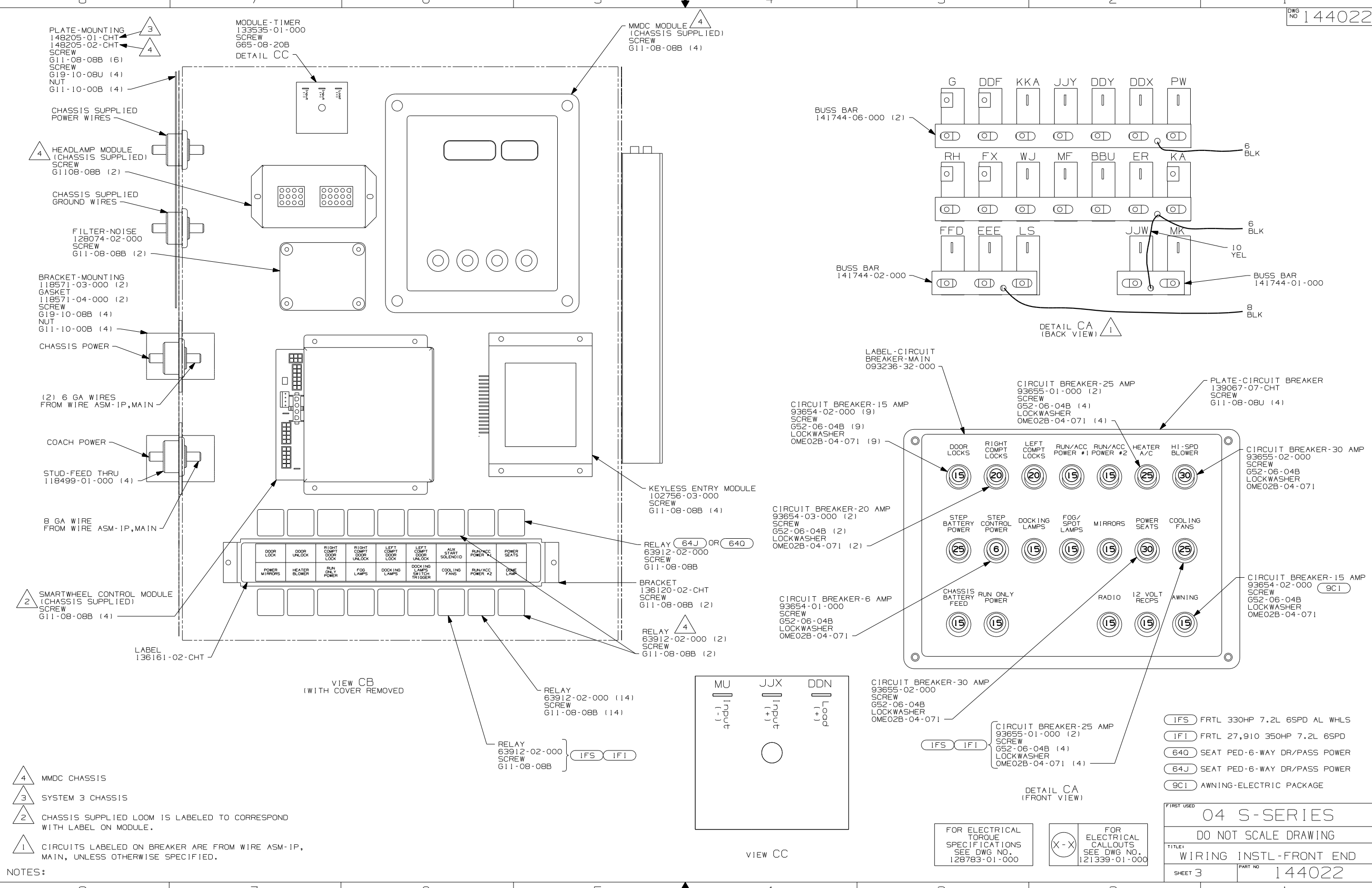
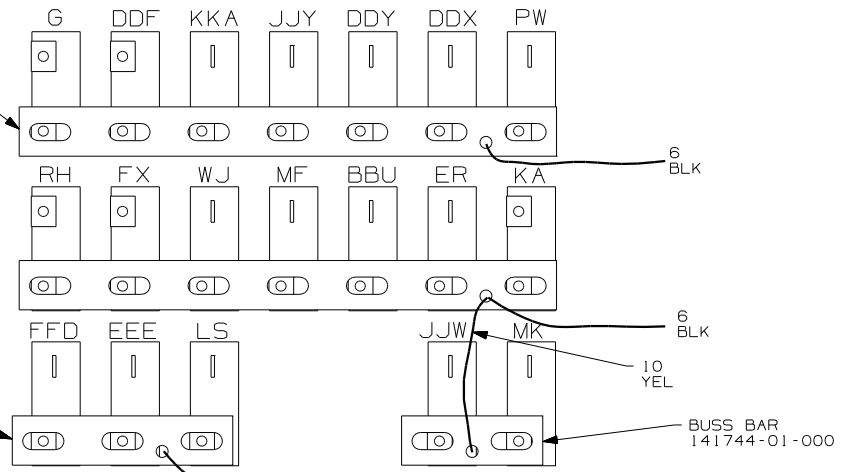


PLATE-MOUNTING  
148205-01-CHT  
148205-02-CHT  
SCREW  
G11-08-08B (6)  
SCREW  
G19-10-08U (4)  
NUT  
G11-10-00B (4)

MODULE-TIMER  
133535-01-000  
SCREW  
G65-08-20B  
DETAIL CC

MMDC MODULE  
(CHASSIS SUPPLIED)  
SCREW  
G11-08-08B (4)

BUSS BAR  
141744-06-000 (2)



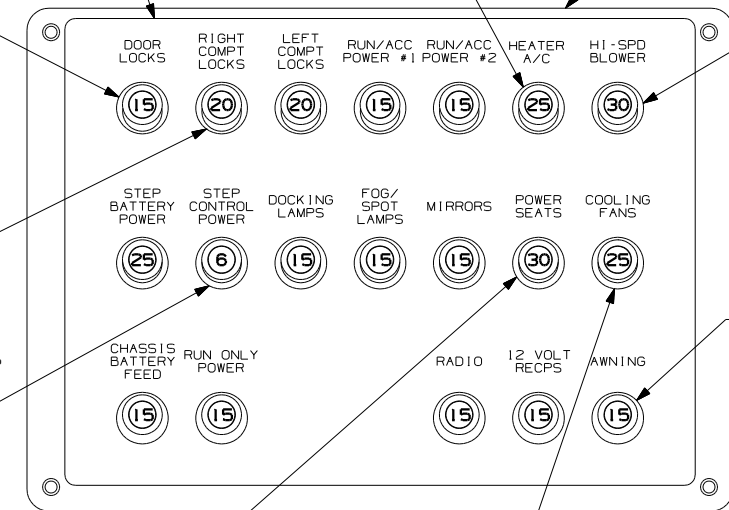
DETAIL CA  
(BACK VIEW)

LABEL-CIRCUIT  
BREAKER-MAIN  
093236-32-000

CIRCUIT BREAKER-25 AMP  
93655-01-000 (2)  
SCREW  
G52-06-04B (4)  
LOCKWASHER  
OME02B-04-071 (4)

PLATE-CIRCUIT BREAKER  
139067-07-CHT  
SCREW  
G11-08-08U (4)

CIRCUIT BREAKER-15 AMP  
93654-02-000 (9)  
SCREW  
G52-06-04B (9)  
LOCKWASHER  
OME02B-04-071 (9)



CIRCUIT BREAKER-30 AMP  
93655-02-000  
SCREW  
G52-06-04B  
LOCKWASHER  
OME02B-04-071

CIRCUIT BREAKER-15 AMP  
93654-02-000 (9C1)  
SCREW  
G52-06-04B  
LOCKWASHER  
OME02B-04-071

CIRCUIT BREAKER-20 AMP  
93654-03-000 (2)  
SCREW  
G52-06-04B (2)  
LOCKWASHER  
OME02B-04-071 (2)

CIRCUIT BREAKER-6 AMP  
93654-01-000  
SCREW  
G52-06-04B  
LOCKWASHER  
OME02B-04-071

CIRCUIT BREAKER-30 AMP  
93655-02-000  
SCREW  
G52-06-04B  
LOCKWASHER  
OME02B-04-071

CIRCUIT BREAKER-25 AMP  
93655-01-000 (2)  
SCREW  
G52-06-04B (4)  
LOCKWASHER  
OME02B-04-071 (4)

- (IFS) FRTL 330HP 7.2L 6SPD AL WHLS
- (IF1) FRTL 27,910 350HP 7.2L 6SPD
- (640) SEAT PED-6-WAY DR/PASS POWER
- (64J) SEAT PED-6-WAY DR/PASS POWER
- (9C1) AWNING-ELECTRIC PACKAGE

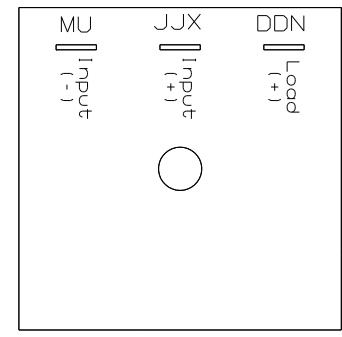
DETAIL CA  
(FRONT VIEW)

FOR ELECTRICAL  
TORQUE  
SPECIFICATIONS  
SEE DWG NO.  
128783-01-000

FOR ELECTRICAL  
CALLOUTS  
SEE DWG NO.  
121339-01-000

FIRST USED	
04 S-SERIES	
DO NOT SCALE DRAWING	
TITLE: WIRING INSTL-FRONT END	
SHEET 3	PART NO 144022

- NOTES:
- 4 MMDC CHASSIS
  - 3 SYSTEM 3 CHASSIS
  - 2 CHASSIS SUPPLIED LOOM IS LABELED TO CORRESPOND WITH LABEL ON MODULE.
  - 1 CIRCUITS LABELED ON BREAKER ARE FROM WIRE ASM-1P, MAIN, UNLESS OTHERWISE SPECIFIED.



VIEW CC

VIEW CB  
(WITH COVER REMOVED)

RELAY 63912-02-000 (14)  
SCREW  
G11-08-08B (14)

RELAY 63912-02-000 (2)  
SCREW  
G11-08-08B (2)

RELAY 64J OR 640  
63912-02-000  
SCREW  
G11-08-08B

BRACKET  
136120-02-CHT  
SCREW  
G11-08-08B (2)

RELAY 63912-02-000 (2)  
SCREW  
G11-08-08B (2)

KEYLESS ENTRY MODULE  
102756-03-000  
SCREW  
G11-08-08B (4)

BRACKET-MOUNTING  
118571-03-000 (2)  
GASKET  
118571-04-000 (2)  
SCREW  
G19-10-08B (4)  
NUT  
G11-10-00B (4)

CHASSIS POWER

(2) 6 GA WIRES  
FROM WIRE ASM-1P,MAIN

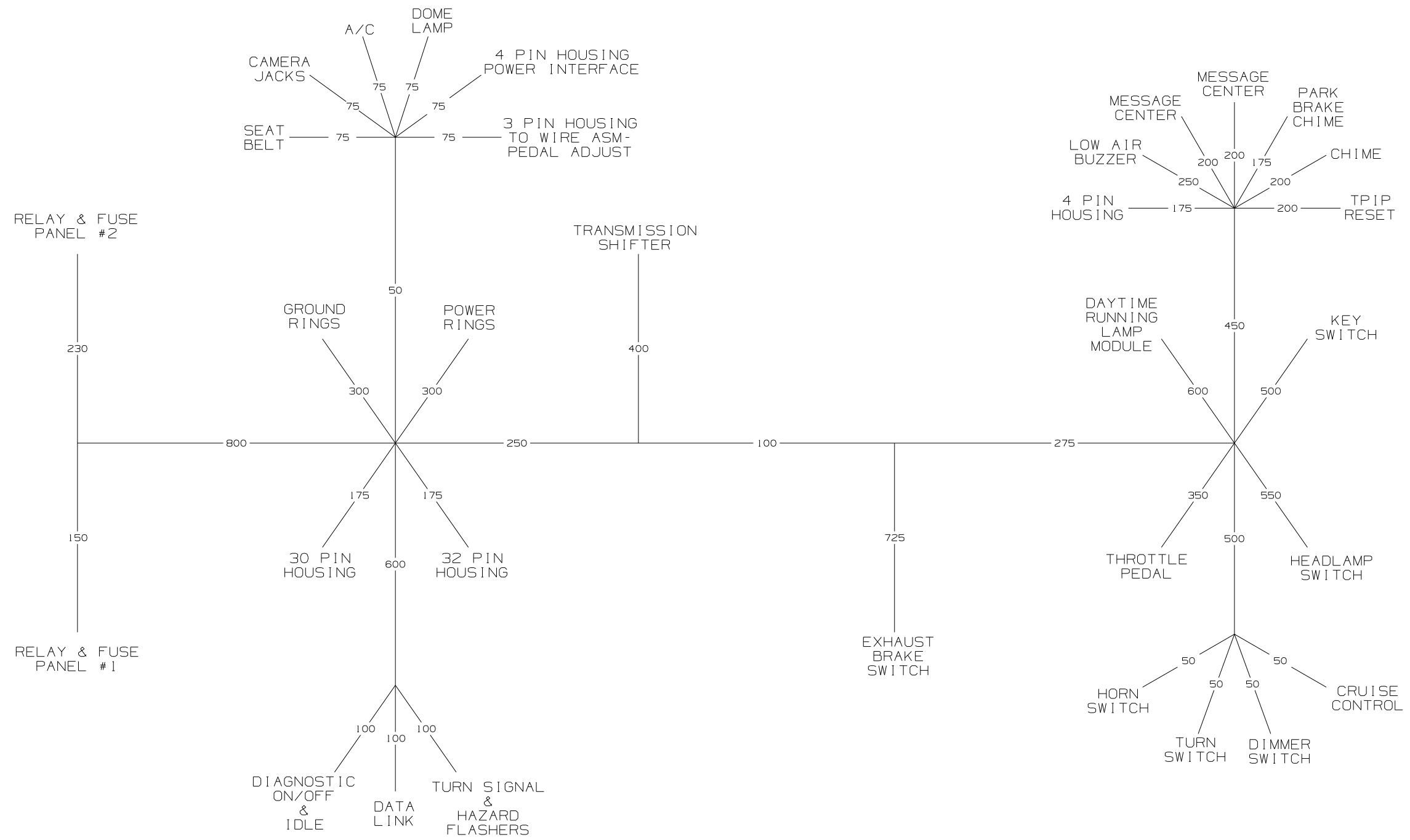
COACH POWER

STUD-FEED THRU  
118499-01-000 (4)

8 GA WIRE  
FROM WIRE ASM-1P,MAIN

SMARTWHEEL CONTROL MODULE  
(CHASSIS SUPPLIED)  
SCREW  
G11-08-08B (4)

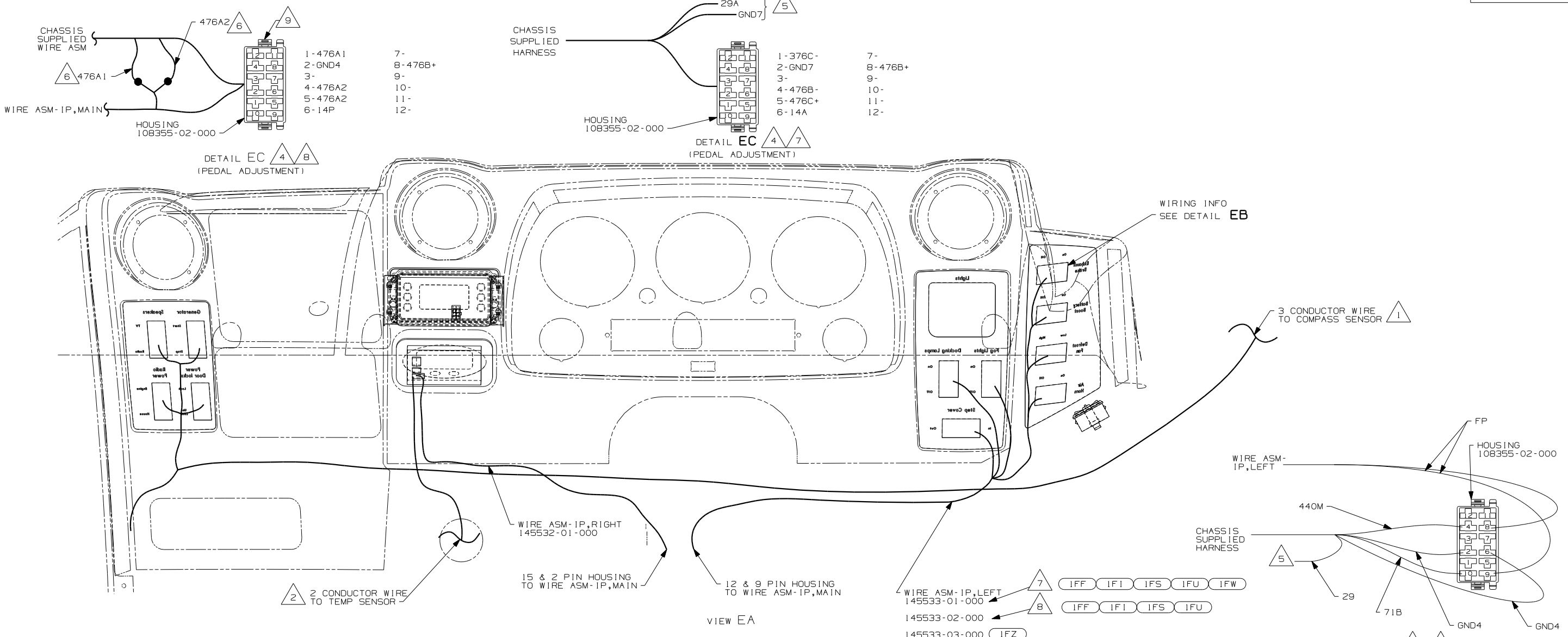
LABEL  
136161-02-CHT



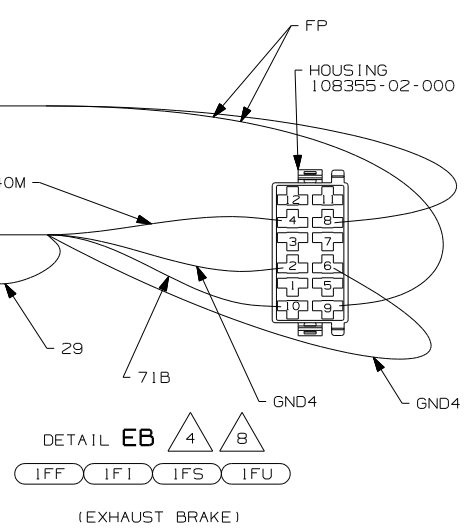
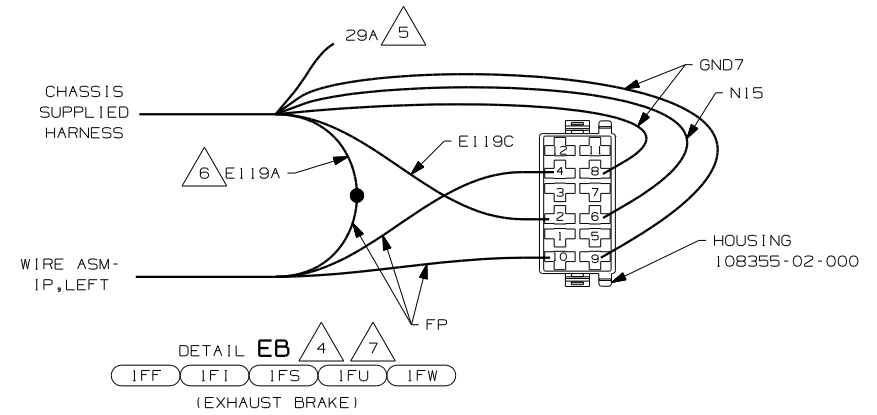
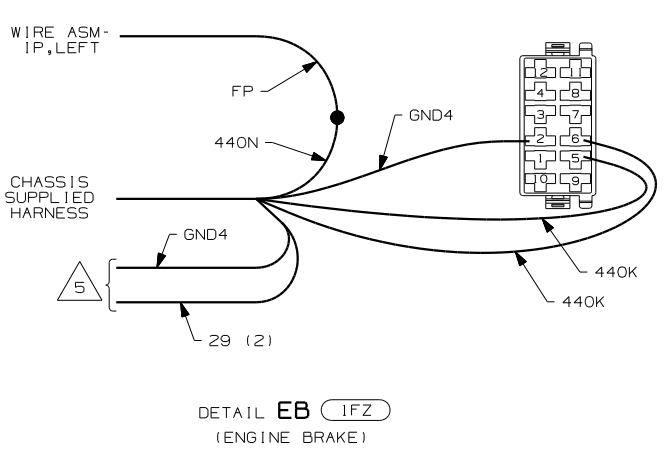
FOR ELECTRICAL TORQUE SPECIFICATIONS SEE DWG NO. 128783-01-000

(X-X) FOR ELECTRICAL CALLOUTS SEE DWG NO. 121339-01-000

FIRST USED		04 S-SERIES	
DO NOT SCALE DRAWING			
TITLE: WIRING INSTL-FRONT END			
SHEET 4	PART NO	144022	



- 9 HOUSING AND CIRCUITS 476A1 & 476A2 ARE PART OF WIRE ASM-IP,MAIN.
- 8 MMDC CHASSIS
- 7 SYSTEM 3 CHASSIS
- 6 CUT TERMINAL FROM WIRE AND BUTT CONNECT AS SHOWN.
- 5 CIRCUITS NOT USED. CUT OFF TERMINALS, WRAP WIRE WITH TAPE, AND SECURE BACK INTO LOOM.
- 4 REMOVE TERMINALS FROM HOUSING ON CHASSIS SUPPLIED WIRE ASM. THEN REHOUSE TERMINALS IN HOUSING AS SHOWN.
- 3 CUT TERMINALS OFF FL WIRE ASSEMBLY AND BUTT SPLICE.
- 2 ROUTE OUT FRONT END W/WIRE ASM-IP,MAIN.
- 1 ROUTE UP LEFT A-PILLAR.

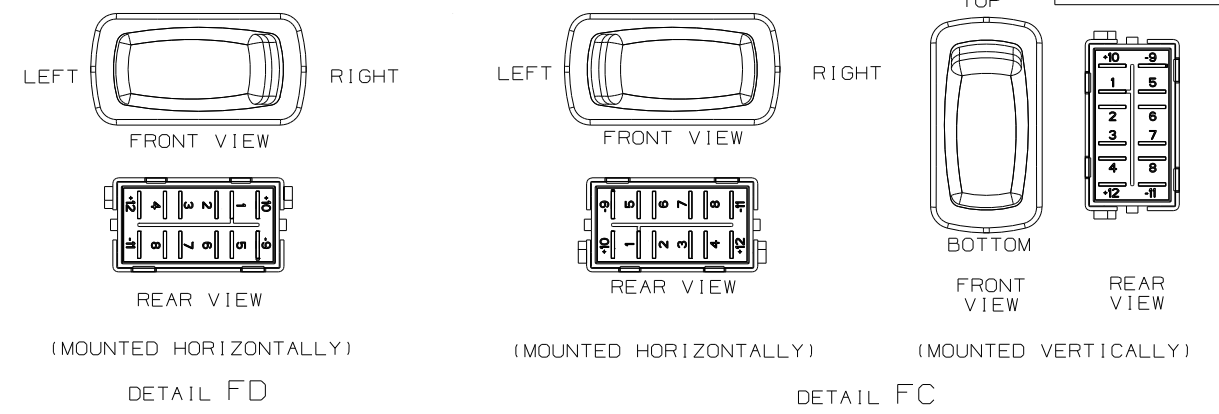
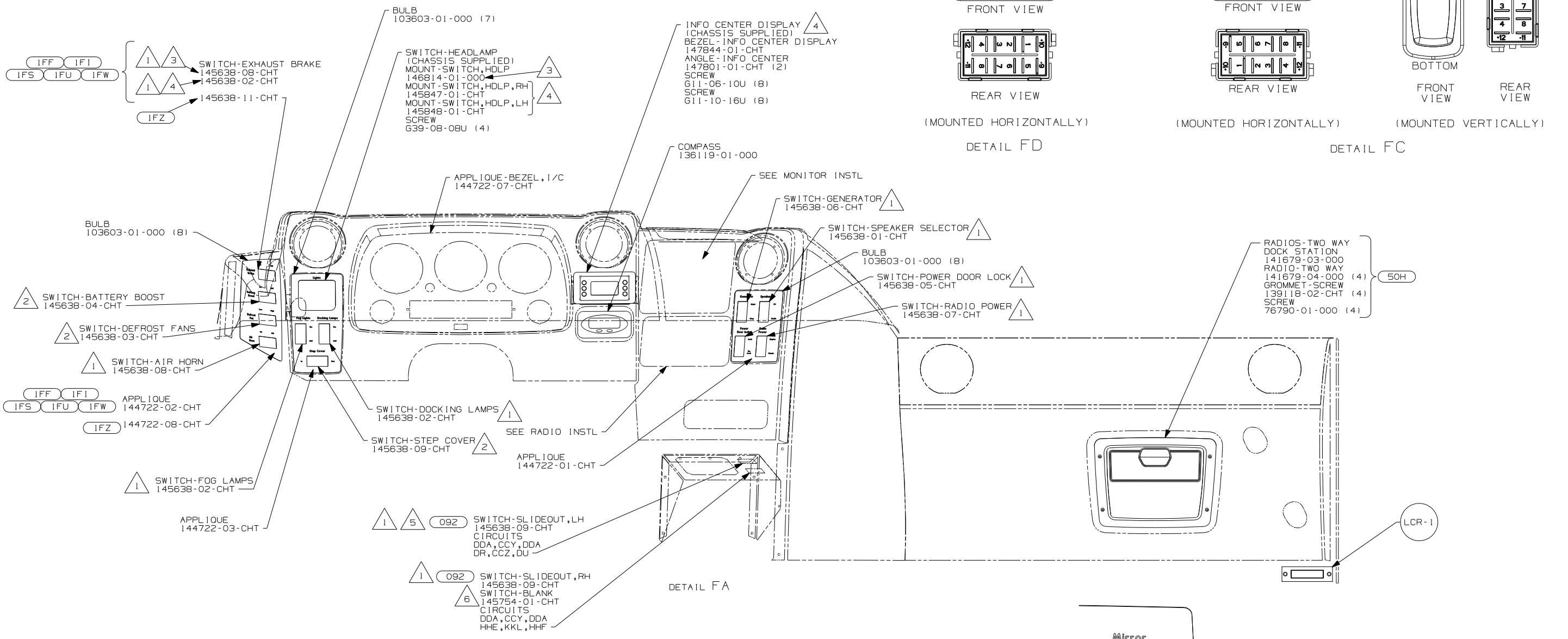


- IFZ) FRTL 400HP 8.9L 6SPD AL WHLS
- IFW) FRTL/IFS/32K GVW/350HP/8.3L
- IFU) FRTL 32,000 350HP 7.2L 6 SPD
- IFS) FRTL 330HP 7.2L 6SPD AL WHLS
- IFI) FRTL 27,910 350HP 7.2L 6SPD
- IFF) FRTL 32000 330 7.2L 6-SPD

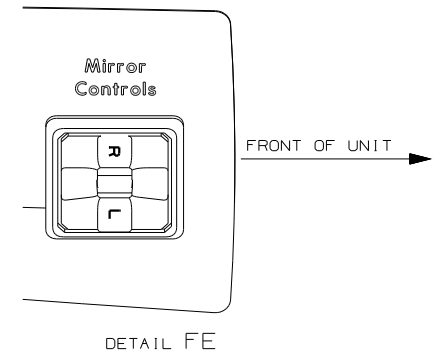
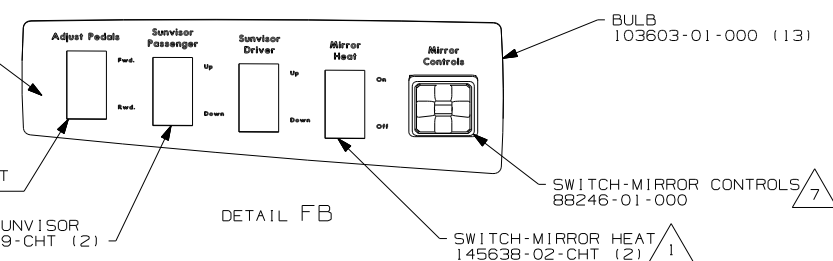
FOR ELECTRICAL TORQUE SPECIFICATIONS SEE DWG NO. 128783-01-000

FOR ELECTRICAL CALLOUTS SEE DWG NO. 121339-01-000

FIRST USED	
04 S-SERIES	
DO NOT SCALE DRAWING	
TITLE: WIRING INSTL-FRONT END	
SHEET 5	PART NO 144022



- NOTES:
- 7 MOUNT SWITCH SO WHEN ACTUATOR IS PUSHED LEFT, THE LETTER L IS SHOWING. SEE DETAIL FE.
  - 6 WITHOUT 092.
  - 5 HOUSING ON WIRE ASM IS MARKED WITH YELLOW TAPE.
  - 4 MMDC CHASSIS
  - 3 SYSTEM 3 CHASSIS
  - 2 FOR SWITCH ORIENTATION SEE DETAIL FD.
  - 1 FOR SWITCH ORIENTATION SEE DETAIL FC.

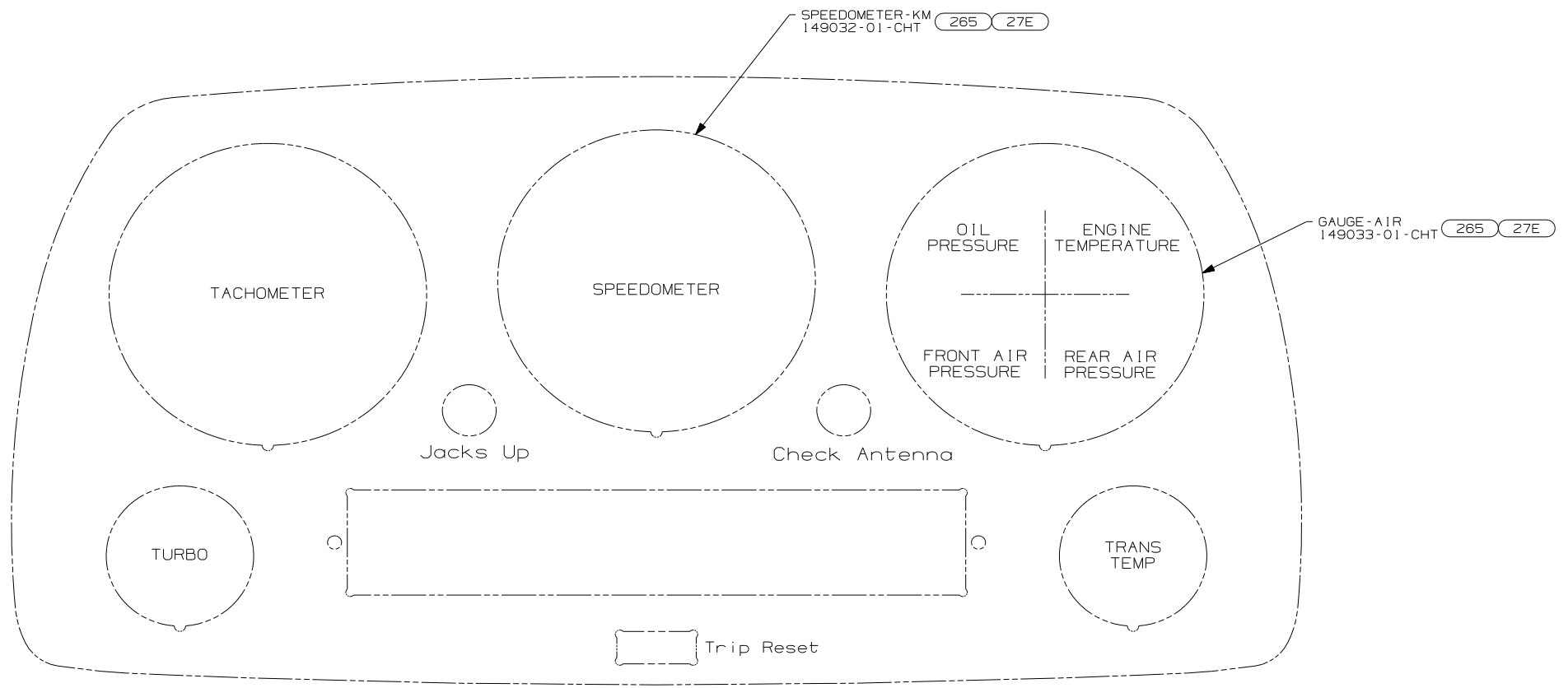


- IFZ) FRTL 400HP 8.9L 6SPD AL WHLS
- IFW) FRTL/IFS/32K GVW/350HP/8.3L
- IFU) FRTL 32,000 350HP 7.2L 6 SPD
- IFS) FRTL 330HP 7.2L 6SPD AL WHLS
- IFI) FRTL 27,910 350HP 7.2L 6SPD
- IFF) FRTL 32000 330 7.2L 6-SPD
- 092) SLIDEOUT ROOM - FRONT RIGHT
- 50H) RADIOS TWO-WAY (4)

FOR ELECTRICAL TORQUE SPECIFICATIONS SEE DWG NO. 128783-01-000

(X-X) FOR ELECTRICAL CALLOUTS SEE DWG NO. 121339-01-000

FIRST USED	
04 S-SERIES	
DO NOT SCALE DRAWING	
TITLE: WIRING INSTL-FRONT END	
SHEET 6	PART NO 144022



27E CODES/STANDARDS - CMVSS  
 265 CODES/STANDARDS - CSA/CMVSS

1. ALL STANDARD GAUGES, RETAINER CLIPS AND FASTENERS ARE CHASSIS SUPPLIED.

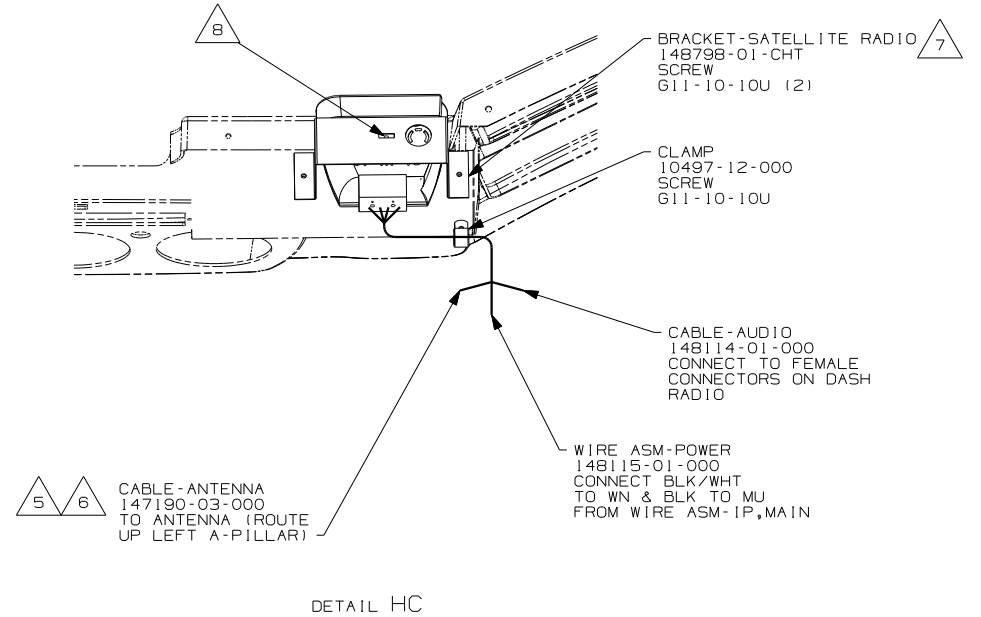
NOTES:

FOR ELECTRICAL TORQUE SPECIFICATIONS SEE DWG NO. 128783-01-000

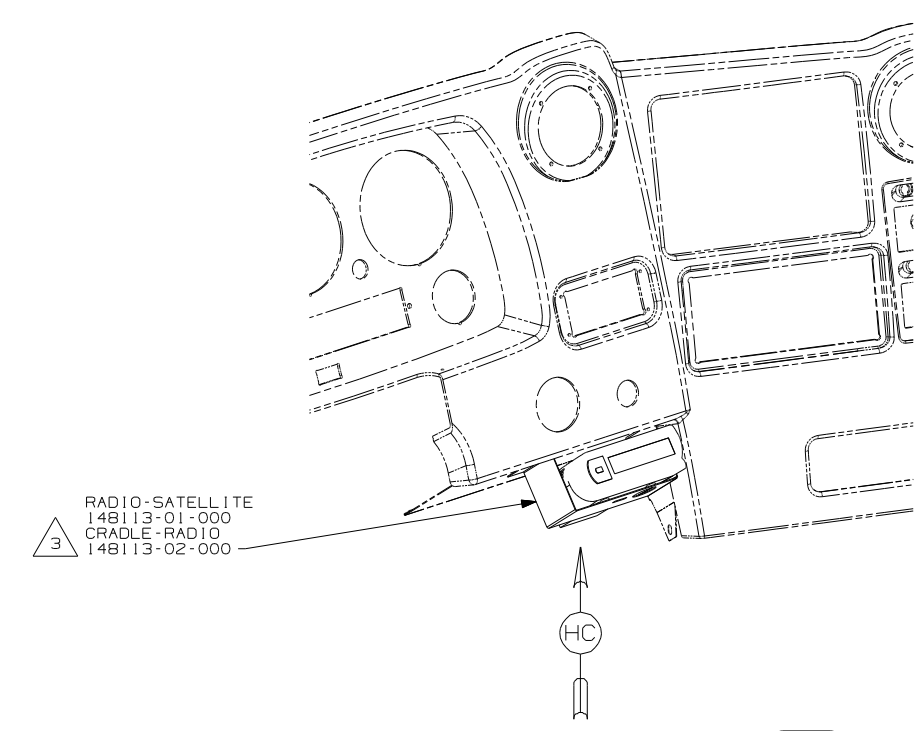
FOR ELECTRICAL CALLOUTS SEE DWG NO. 121339-01-000

FIRST USED	04 S-SERIES
DO NOT SCALE DRAWING	
TITLE:	WIRING INSTL-FRONT END
SHEET 7	PART NO 144022

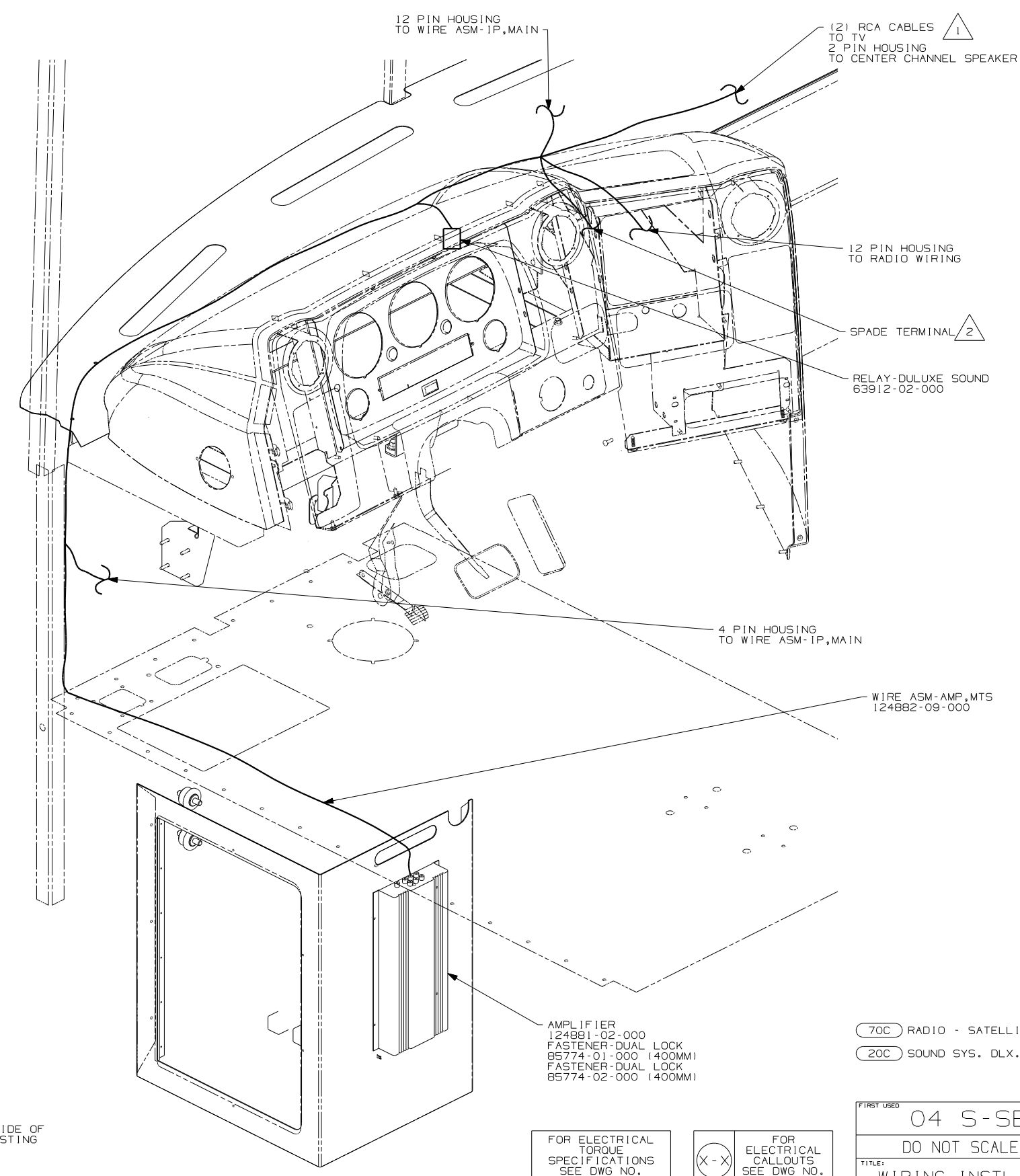




DETAIL HC



DETAIL HB 70C



DETAIL HA 20C

- 6 PLUG CABLE MARKED TERR TO TERR INPUT & THE CABLE MARKED SAT INTO THE SAT INPUT ON THE SATELLITE RECEIVER.
- 5 SEE ANTENNA INSTL-RADIO & CB FOR ADDITIONAL INFORMATION.
- 4 COVER WIRES WITH CONDUIT 41953-01-000 (300 MM)
- 3 REMOVE MOUNTING FOOT BY REMOVING SCREW AND DISCARD.
- 2 CUT SPADE TERMINAL FROM BLK/WHT WIRE AND SPLICE TO DP FROM WIRE ASM-IP,MAIN.
- 1 ROUTE UP RIGHT HAND A-POST

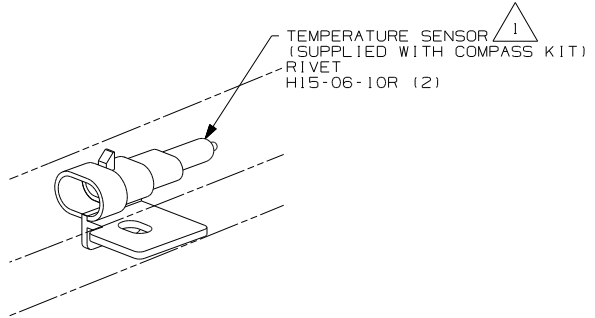
- 7 REMOVE NUT AND WASHER FROM BOTTOM SIDE OF ADJUSTABLE MOUNTING PAD AND USE EXISTING SCREW IN CRADLE TO MOUNT BRACKET.
- 7 POSITION BRACKET BY MOUNTING TO PILOT HOLES IN SHIELD-SIGHT,DASH.

FOR ELECTRICAL TORQUE SPECIFICATIONS SEE DWG NO. 128783-01-000

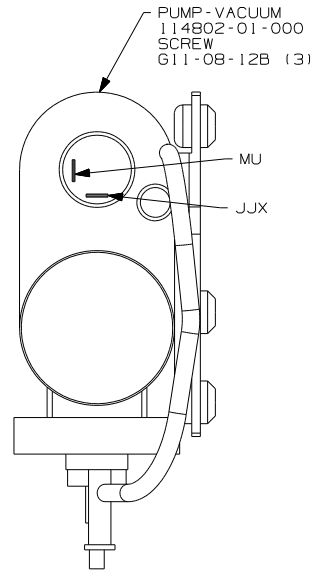
FOR ELECTRICAL CALLOUTS SEE DWG NO. 121339-01-000

70C RADIO - SATELLITE  
20C SOUND SYS. DLX. W/O-SURROUND

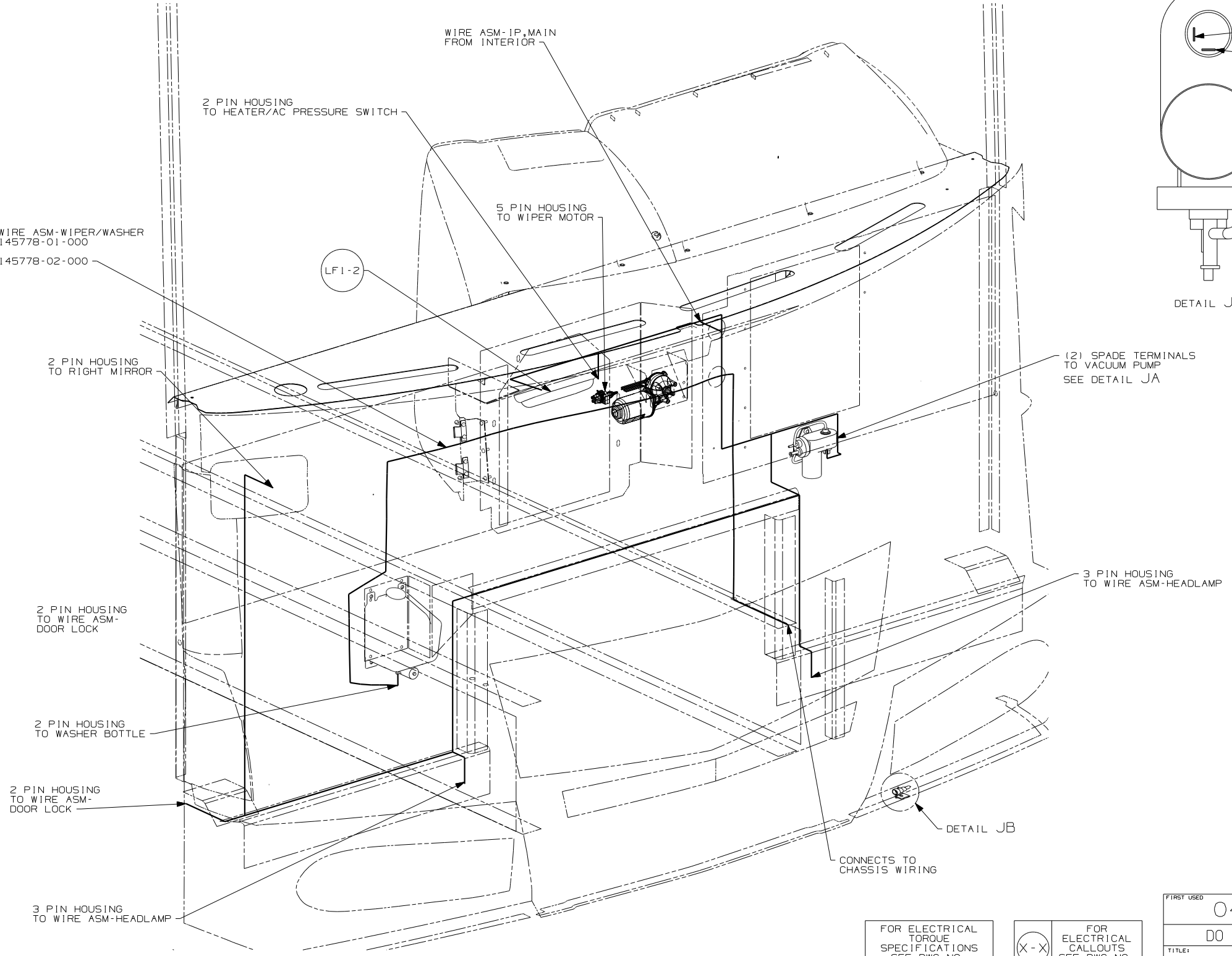
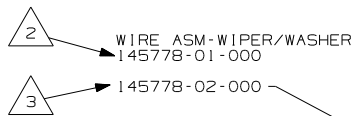
FIRST USED	04 S-SERIES	
TITLE	DO NOT SCALE DRAWING	
	WIRING INSTL-FRONT END	
SHEET 8	PART NO	144022



DETAIL JB



DETAIL JA



- NOTES:
- 3 MMDC WIRING
  - 2 SYSTEM 3 WIRING
  - 1 DRILL 5MM HOLE IN LOWER LIP OF FIBERGLASS IN AREA SHOWN.

FOR ELECTRICAL TORQUE SPECIFICATIONS SEE DWG NO. 128783-01-000

FOR ELECTRICAL CALLOUTS SEE DWG NO. 121339-01-000

1B1 265	
FIRST USED	
04 S-SERIES	
DO NOT SCALE DRAWING	
TITLE:	
WIRING INSTL-FRONT END	
SHEET 9	PART NO 144022