



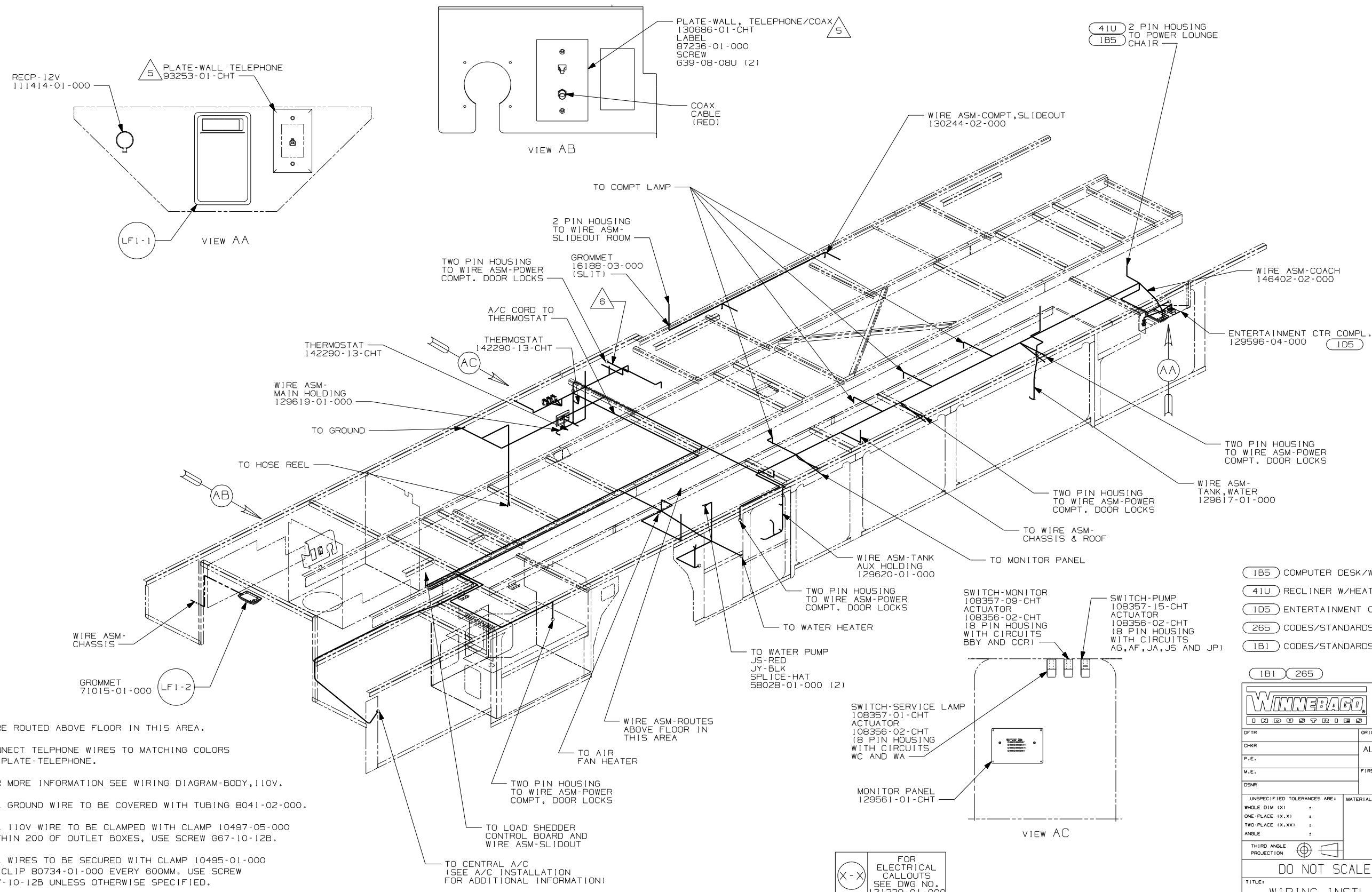
DANGER

Danger of electrical shock, burns or death. Always remove all power sources before attempting any repair, service or diagnostic work. Power can be present from shore power, generator, inverter or battery. All power sources must be disabled and secured before performing any service.



CAUTION

If you lack the skills, tools or equipment to perform diagnostic or repair work leave such work to an authorized Winnebago Industries dealer or other qualified shop.

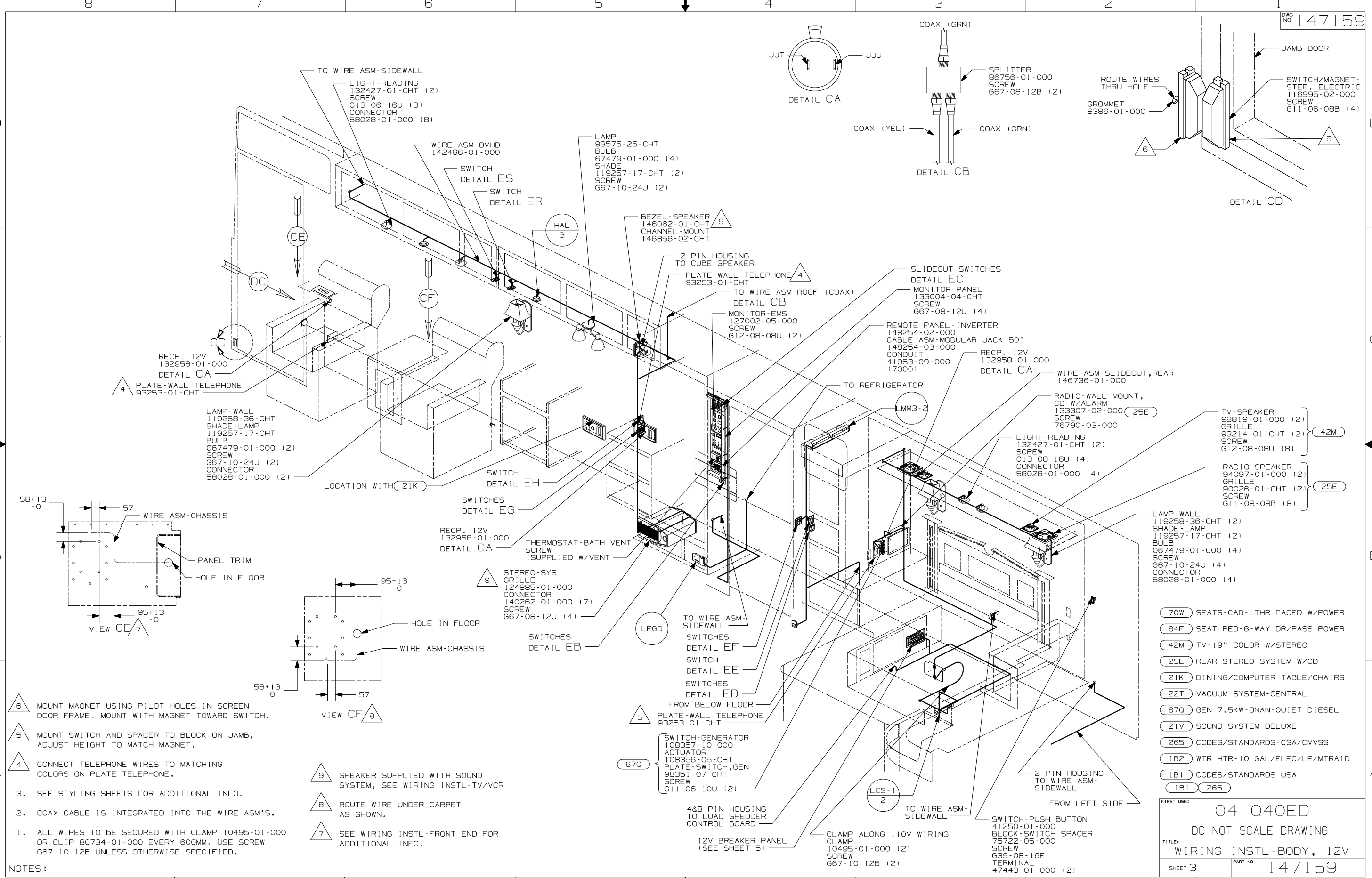


- NOTES:
1. ALL WIRES TO BE SECURED WITH CLAMP 10495-01-000 OR CLIP 80734-01-000 EVERY 600MM. USE SCREW 667-10-12B UNLESS OTHERWISE SPECIFIED.
 2. ALL 110V WIRE TO BE CLAMPED WITH CLAMP 10497-05-000 WITHIN 200 OF OUTLET BOXES, USE SCREW 667-10-12B.
 3. ALL GROUND WIRE TO BE COVERED WITH TUBING 8041-02-000.
 4. FOR MORE INFORMATION SEE WIRING DIAGRAM-BODY,110V.

FOR ELECTRICAL CALLOUTS SEE DWG NO. 121339-01-000

- 1B5 COMPUTER DESK/WORKSTATION
- 41U RECLINER W/HEAT AND MESSAGE
- 1D5 ENTERTAINMENT CTR/EXT W/CD
- 265 CODES/STANDARDS-CSA/CMVSS
- 1B1 CODES/STANDARDS USA

WINNEBAGO		COPYRIGHT 2004 WINNEBAGO INDUSTRIES, INC.	
D/FR	ORIG. DATE	ALL DIMENSIONS ARE IN MILLIMETERS	
CHKR		FIRST USED	
P.E.		04 Q40ED	
M.E.			
DSNR			
UNSPECIFIED TOLERANCES ARE:		MATERIAL:	
WHOLE DIM (X)	:		
ONE-PLACE (X.X)	:		
TWO-PLACE (X.XX)	:		
ANGLE	:		
THIRD ANGLE PROJECTION			
DO NOT SCALE DRAWING			
TITLE: WIRING INSTL-BODY, 12V			
SHEET 1 OF 7	PART NO	147159	
REF:		1 1/7/2004	

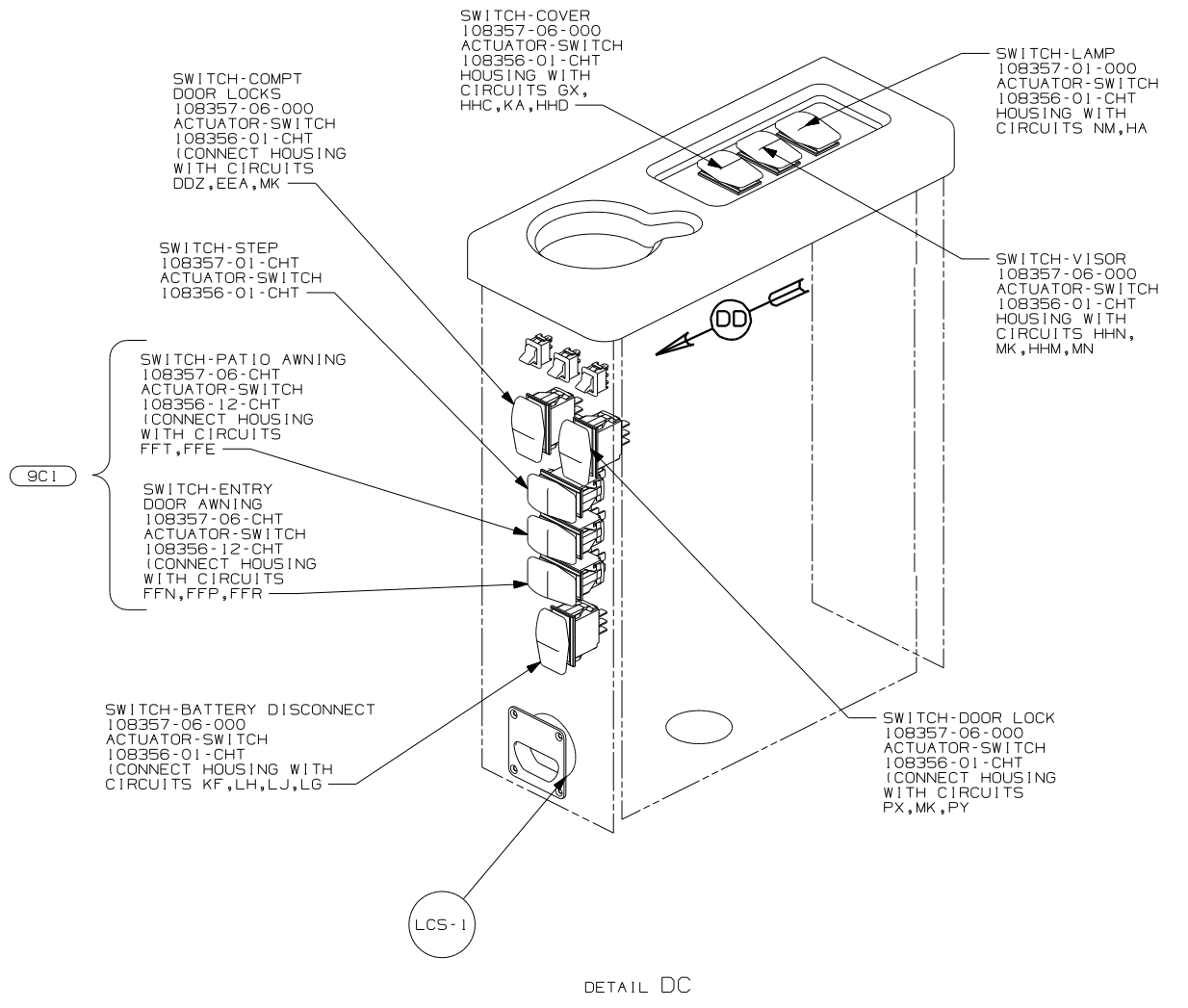
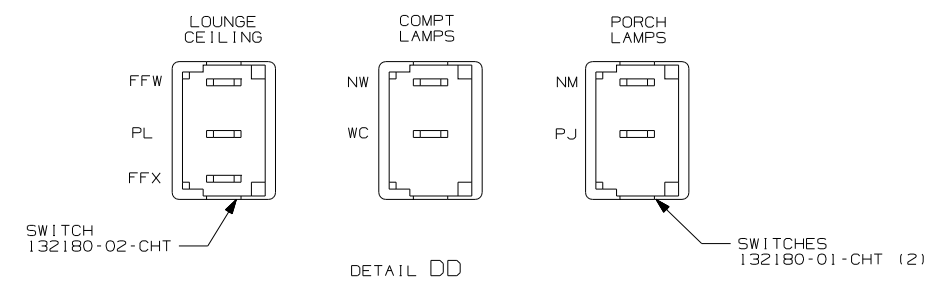
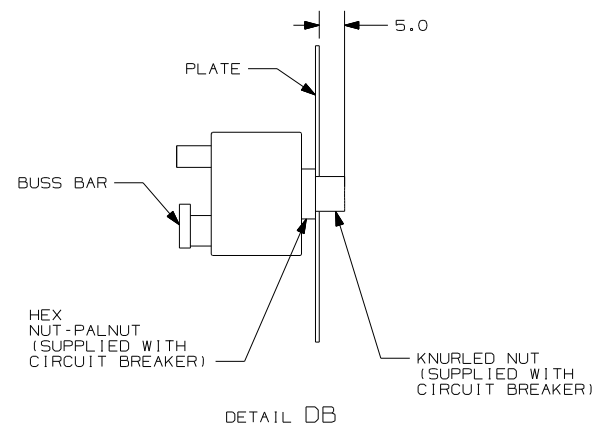
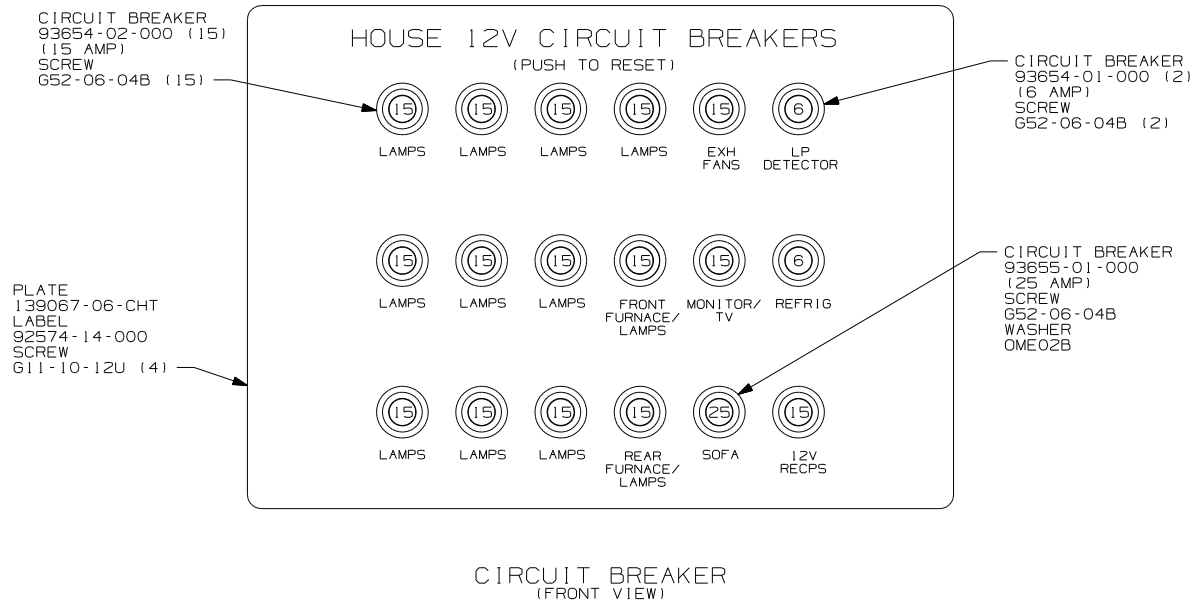
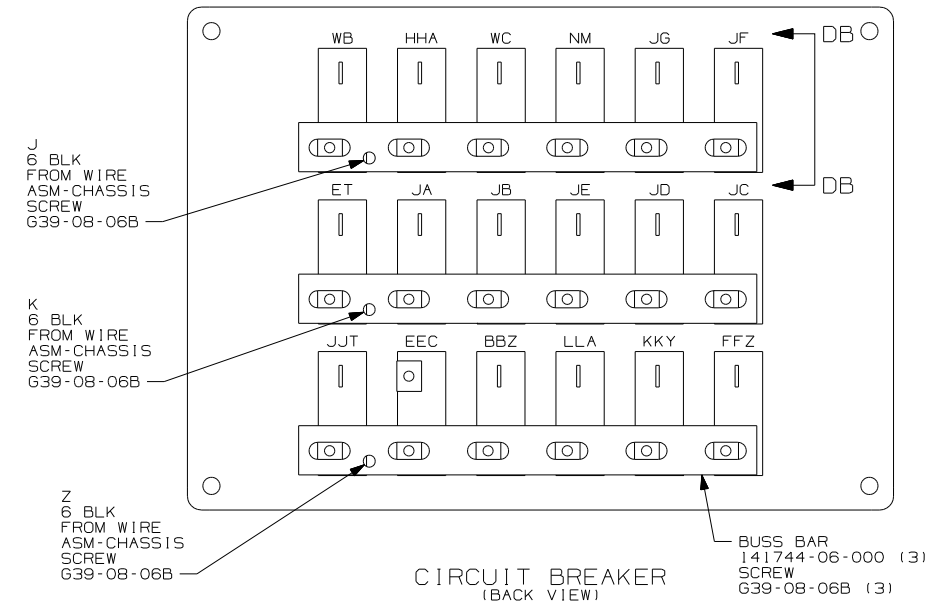


- 6 MOUNT MAGNET USING PILOT HOLES IN SCREEN DOOR FRAME. MOUNT WITH MAGNET TOWARD SWITCH.
- 5 MOUNT SWITCH AND SPACER TO BLOCK ON JAMB, ADJUST HEIGHT TO MATCH MAGNET.
- 4 CONNECT TELEPHONE WIRES TO MATCHING COLORS ON PLATE TELEPHONE.
- 3. SEE STYLING SHEETS FOR ADDITIONAL INFO.
- 2. COAX CABLE IS INTEGRATED INTO THE WIRE ASM'S.
- 1. ALL WIRES TO BE SECURED WITH CLAMP 10495-01-000 OR CLIP 80734-01-000 EVERY 600MM. USE SCREW 667-10-12B UNLESS OTHERWISE SPECIFIED.

- 9 SPEAKER SUPPLIED WITH SOUND SYSTEM, SEE WIRING INSTL-TV/VCR
- 8 ROUTE WIRE UNDER CARPET AS SHOWN.
- 7 SEE WIRING INSTL-FRONT END FOR ADDITIONAL INFO.

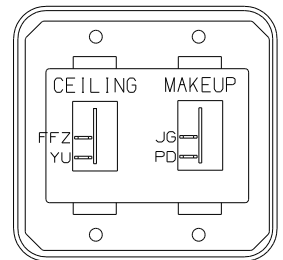
- (70W) SEATS-CAB-LTHR FACED W/POWER
- (64F) SEAT PED-6-WAY DR/PASS POWER
- (42M) TV-19" COLOR W/STEREO
- (25E) REAR STEREO SYSTEM W/CD
- (21K) DINING/COMPUTER TABLE/CHAIRS
- (22T) VACUUM SYSTEM-CENTRAL
- (670) GEN 7.5KW-ONAN-QUIET DIESEL
- (21V) SOUND SYSTEM DELUXE
- (265) CODES/STANDARDS-CSA/CMVSS
- (1B2) WTR HTR-10 GAL/ELEC/LP/MTR/1D
- (1B1) CODES/STANDARDS USA
- (1B1) (265)

FIRST USED	
04 Q40ED	
DO NOT SCALE DRAWING	
TITLE: WIRING INSTL-BODY, 12V	
SHEET 3	PART NO 147159



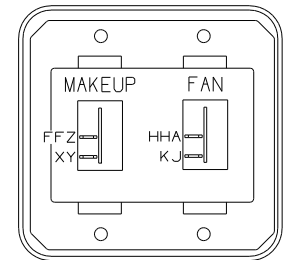
- 9C1 AWNING-ELECTRIC PACKAGE
- 265 CODES/STANDARDS-CSA/CMVSS
- 1B1 CODES/STANDARDS USA

FIRST USED	04 Q40ED
TITLE	DO NOT SCALE DRAWING
TITLE	WIRING INSTL-BODY, 12V
SHEET 4	PART NO 147159



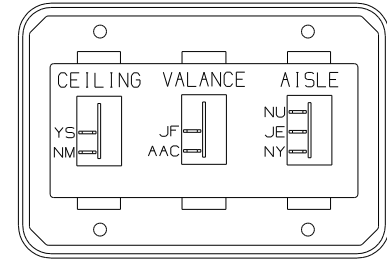
SWITCH-ROCKER
135740-01-CHT (2)
SWITCH-BASE
135741-02-CHT
SWITCH-BEZEL
135742-14-CHT
SCREW
G11-08-08U (4)

DETAIL EA



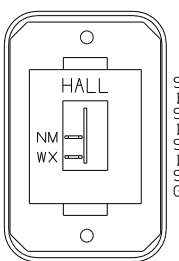
SWITCH-ROCKER
135740-01-CHT (2)
SWITCH-BASE
135741-02-CHT
SWITCH-BEZEL
135742-02-CHT
SCREW
G11-08-08U (4)

DETAIL EF



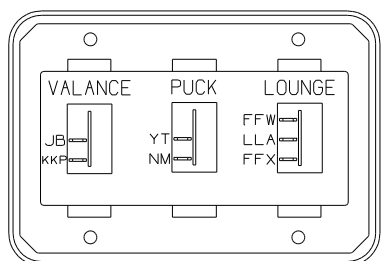
SWITCH-ROCKER
135740-01-CHT (2)
135740-02-CHT
SWITCH-BASE
135741-03-CHT
SWITCH-BEZEL
135742-22-CHT
SCREW
G11-08-08U (4)

DETAIL EM



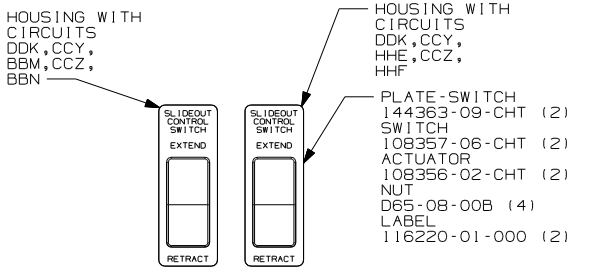
SWITCH-ROCKER
135740-01-CHT
SWITCH-BASE
135741-01-CHT
SWITCH-BEZEL
135742-07-CHT
SCREW
G11-08-08U (2)

DETAIL EB



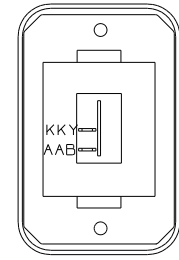
SWITCH-ROCKER
135740-01-CHT (3)
SWITCH-BASE
135741-03-CHT
SWITCH-BEZEL
135742-03-CHT
SCREW
G11-08-08U (4)

DETAIL EG



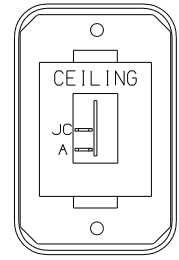
WARNING UNDERSTAND OPERATOR'S MANUAL BEFORE USING. KEEP PEOPLE AND OBSTRUCTIONS CLEAR OF SLIDEOUT ROOM WHEN OPERATING TO AVOID TALKING AND/OR PROPERTY DAMAGE.

DETAIL EC



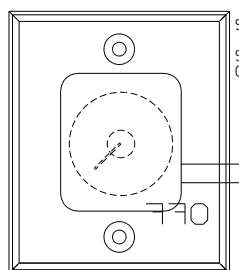
SWITCH-ROCKER
135740-01-CHT
SWITCH-BASE
135741-01-CHT
SWITCH-BEZEL
135742-01-CHT
SCREW
G11-08-08U (2)

DETAIL ER



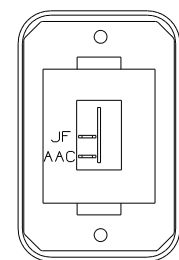
SWITCH-ROCKER
135740-01-CHT
SWITCH-BASE
135741-01-CHT
SWITCH-BEZEL
135742-07-CHT
SCREW
G11-08-08U (2)

DETAIL EN



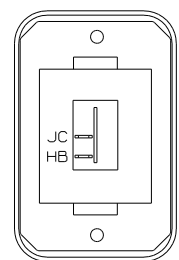
SWITCH
137889-01-000
SCREW
G11-06-10U (2)

DETAIL EH



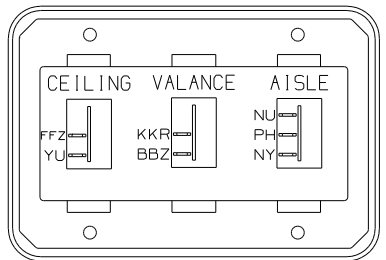
SWITCH-ROCKER
135740-01-CHT
SWITCH-BASE
135741-01-CHT
SWITCH-BEZEL
135742-01-CHT
SCREW
G11-08-08U (2)

DETAIL ES



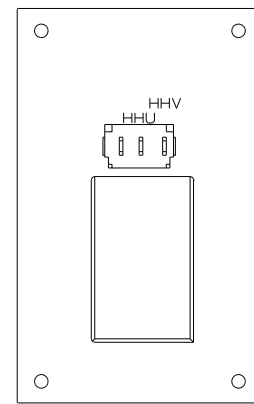
SWITCH-ROCKER
135740-01-CHT
SWITCH-BASE
135741-01-CHT
SWITCH-BEZEL
135742-01-CHT
SCREW
G11-08-08U (2)

DETAIL EP



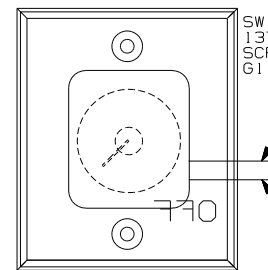
SWITCH-ROCKER
135740-01-CHT (2)
135740-02-CHT
SWITCH-BASE
135741-03-CHT
SWITCH-BEZEL
135742-22-CHT
SCREW
G11-08-08U (4)

DETAIL ED



SWITCH
142290-08-CHT
G11-08-12D (4)

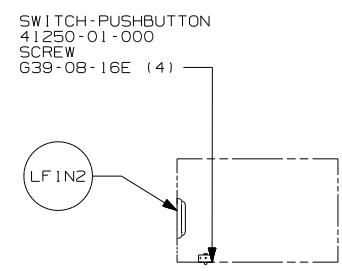
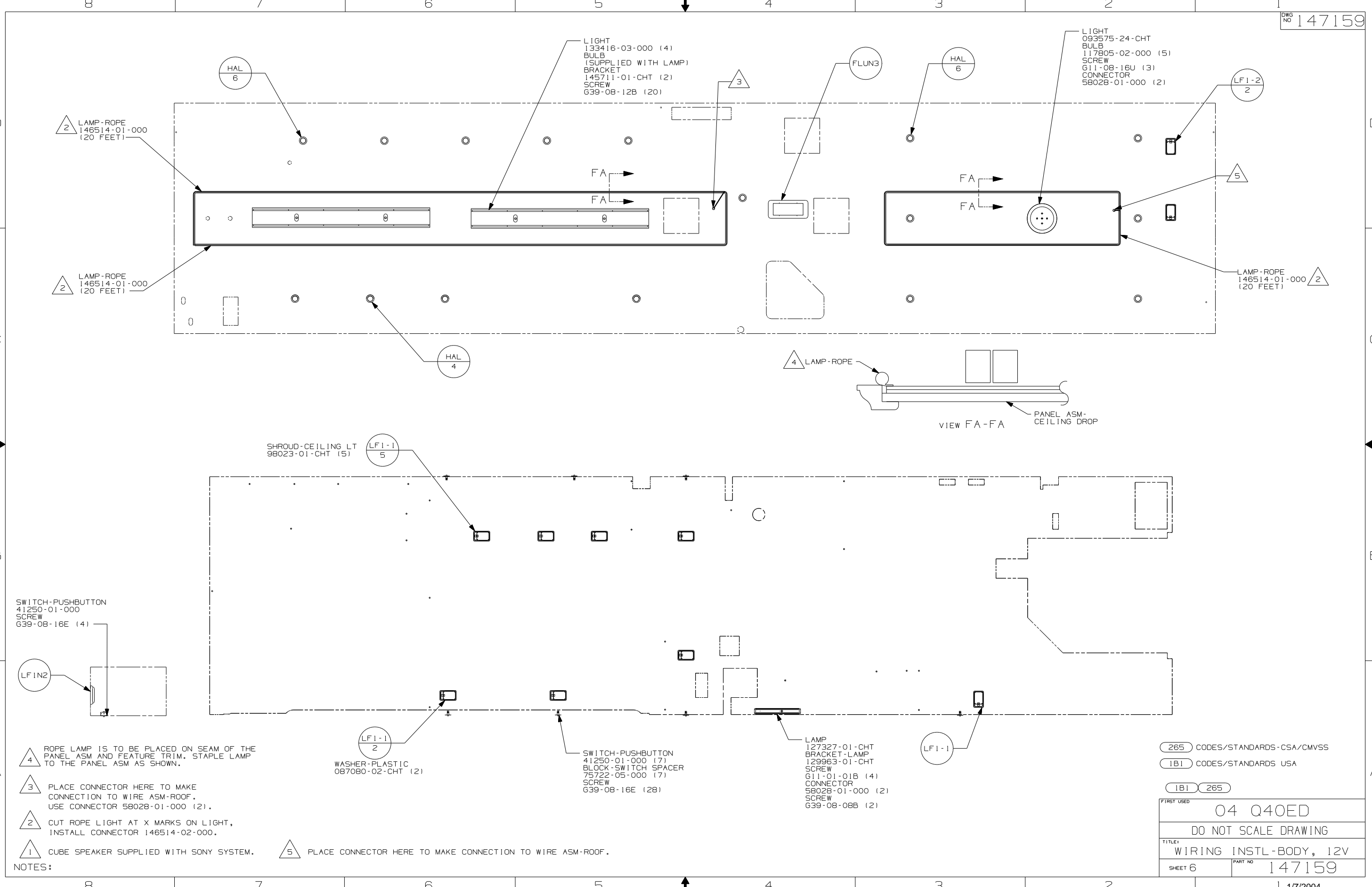
DETAIL EJ



SWITCH
137889-01-000
SCREW
G11-06-10U (2)

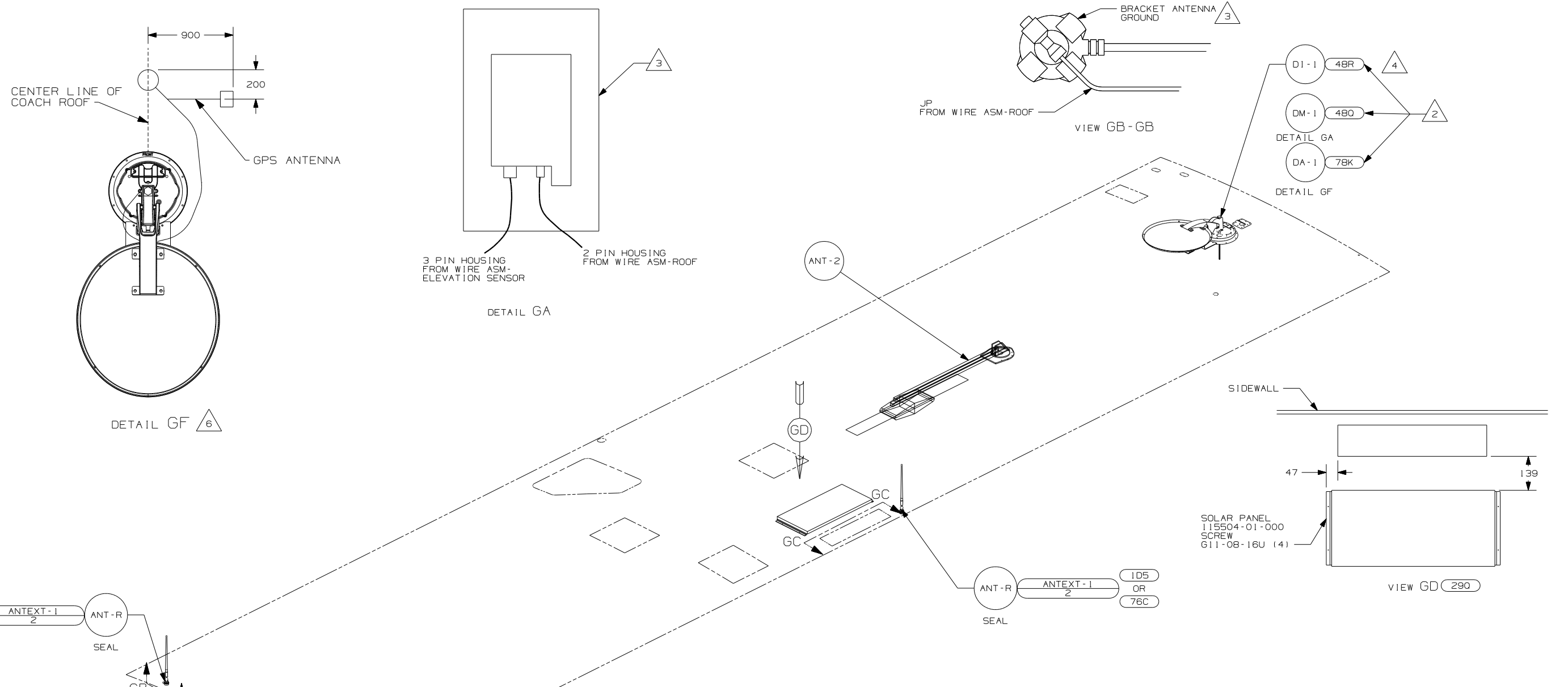
DETAIL EE

FIRST USED	04 Q40ED
TITLE	DO NOT SCALE DRAWING
TITLE	WIRING INSTL-BODY, 12V
SHEET 5	PART NO 147159

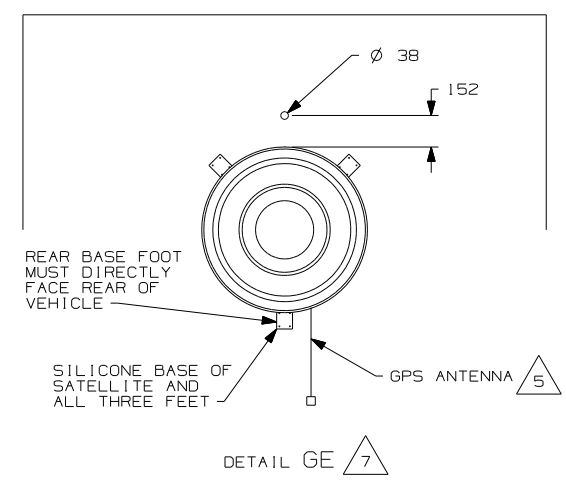
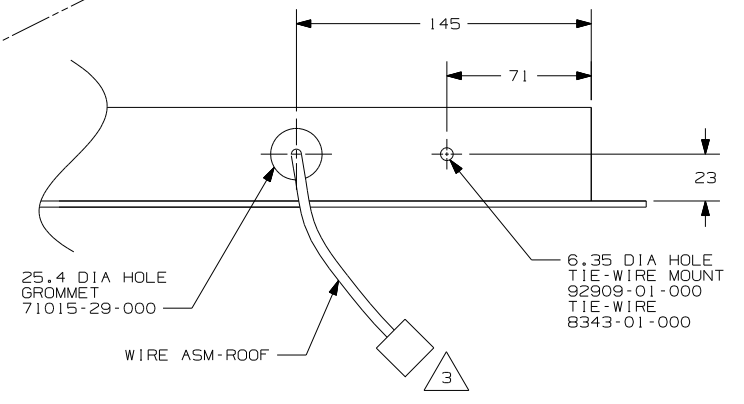


- NOTES:
- 1 CUBE SPEAKER SUPPLIED WITH SONY SYSTEM.
 - 2 CUT ROPE LIGHT AT X MARKS ON LIGHT, INSTALL CONNECTOR 146514-02-000.
 - 3 PLACE CONNECTOR HERE TO MAKE CONNECTION TO WIRE ASM-ROOF. USE CONNECTOR 58028-01-000 (2).
 - 4 ROPE LAMP IS TO BE PLACED ON SEAM OF THE PANEL ASM AND FEATURE TRIM. STAPLE LAMP TO THE PANEL ASM AS SHOWN.
 - 5 PLACE CONNECTOR HERE TO MAKE CONNECTION TO WIRE ASM-ROOF.

(265)	CODES/STANDARDS-CSA/CMVSS
(1B1)	CODES/STANDARDS USA
(1B1)	(265)
FIRST USED	04 Q40ED
TITLE	DO NOT SCALE DRAWING
	WIRING INSTL-BODY, 12V
SHEET 6	PART NO 147159
	1 1/7/2004



- NOTES:
- 7 CUT AND REMOVE SHIPPING STRAPS.
 - 6 MOUNT GPS ANTENNA TO THE RIGHT OF THE SATELLITE AS SHOWN. SECURE CABLE WITH ROOF SEALANT.
 - 5 MOUNT GPS ANTENNA AS FAR TO THE REAR OF THE SATELLITE AS POSSIBLE. SECURE CABLE WITH ROOF SEALANT.
 - 4 SEE DETAIL GE FOR SATELLITE LOCATION.
 - 3 SENSOR SUPPLIED WITH SATELLITE ASSEMBLY.
 - 2 SEE MANUFACTURER'S INSTALLATION FOR ADDITIONAL INFORMATION.
 - 1 WRAP BRACKET LEGS AROUND ANTENNA BASE.



- 48R SAT. SYS. IN-MOTION W/O RCVR.
- 290 SOLAR PANEL - 10 WATT
- 25E REAR STEREO SYSTEM W/CD
- 1D5 ENTERTAINMENT CTR/EXT W/CD
- 76C ENTERTAINMENT CTR/EXT CASSETTE
- 78K SATELLITE DISH-AUTOMATIC
- 480 SATELLITE DISH & ELEV. SENSOR
- 265 CODES/STANDARDS-CSA/CMVSS
- 1B1 CODES/STANDARDS USA

FIRST USED	04 Q40ED	
DO NOT SCALE DRAWING		
TITLE:	WIRING INSTL-BODY, 12V	
SHEET 7	PART NO	147159