



DANGER

Danger of electrical shock, burns or death. Always remove all power sources before attempting any repair, service or diagnostic work. Power can be present from shore power, generator, inverter or battery. All power sources must be disabled and secured before performing any service.

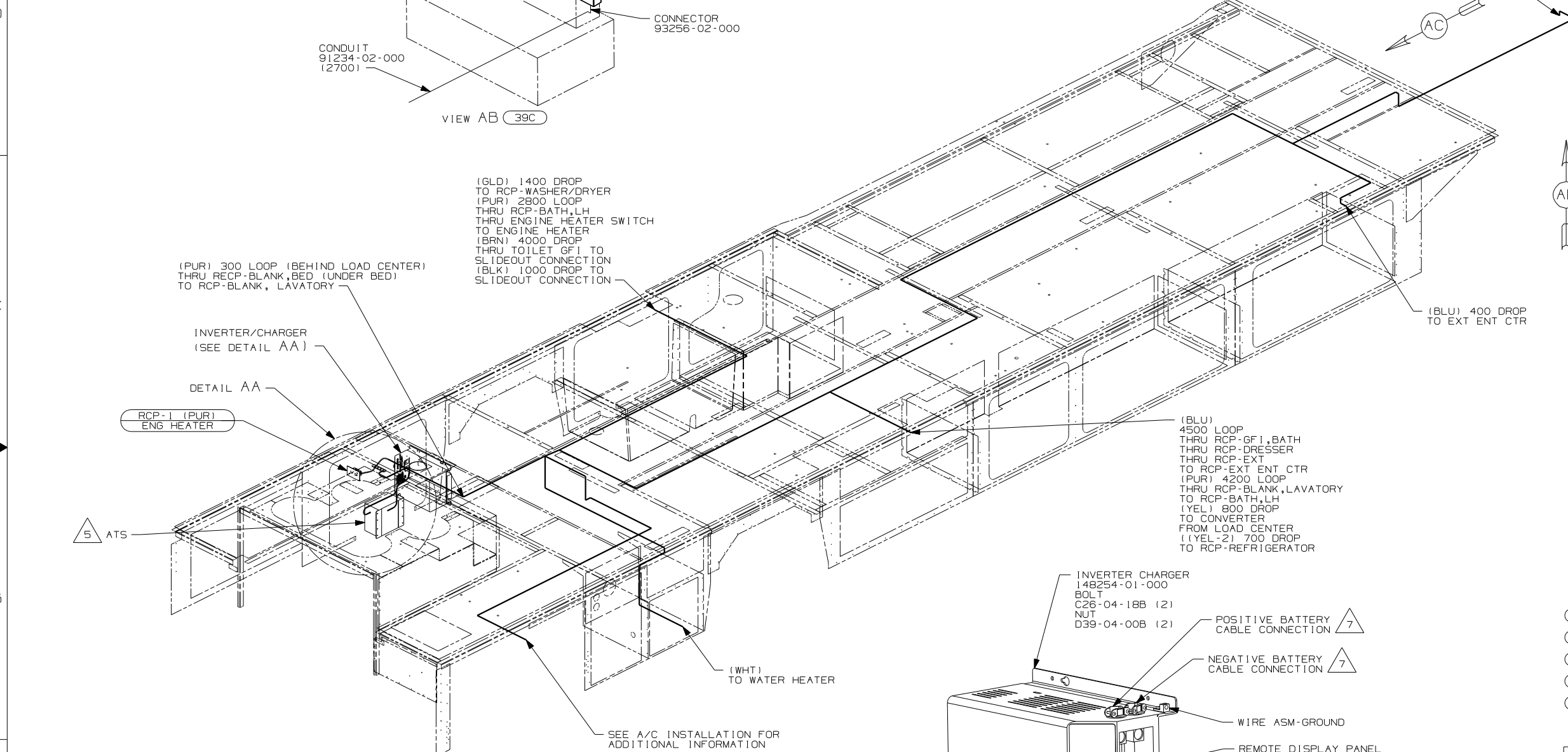


CAUTION

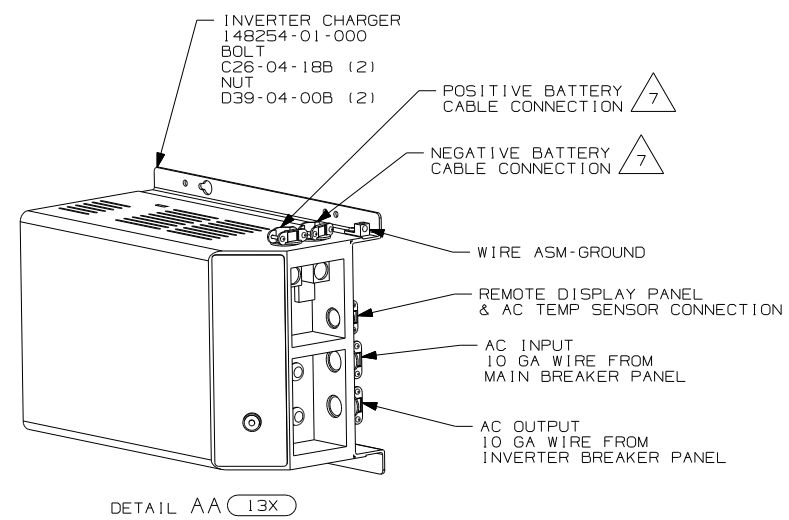
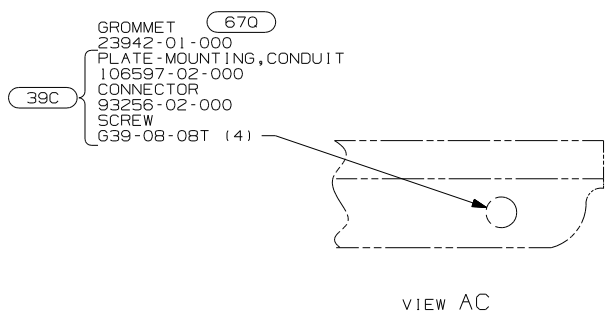
If you lack the skills, tools or equipment to perform diagnostic or repair work leave such work to an authorized Winnebago Industries dealer or other qualified shop.

DRAWING NO.	FEATURE
145320-12	(1B1) (78J)
145320-14	(1B1) (78J) (13X)
145320-16	(265) (78J)
145320-18	(265) (78J) (13X)

RELEASE	REV/DATE	DWG NO
	A	145320
REV ZONE	REVISION RECORD	DATE DFR-ORIG



- 7 SEE WIRING INSTL-CHASSIS FOR ADDITIONAL INFORMATION.
- 6 FOR MORE INFORMATION SEE GENERATOR INSTALLATION.
- 5 FOR MORE INFORMATION SEE LOAD CENTER/ATS ASM.
- 4. FOR MORE INFORMATION SEE WIRING DIAGRAM-BODY,110V.
- 3. ALL GROUND WIRE TO BE COVERED WITH TUBING 8041-02-000.
- 2. ALL 110V WIRE TO BE CLAMPED WITH CLAMP 10497-05-000 WITHIN 200MM OF OUTLET BOXES, USE SCREW G67-10-12B.
- 1. ALL WIRES TO BE SECURED WITH CLAMP 10495-01-000 OR CLIP 80734-01-000 EVERY 600MM. USE SCREW G67-10-12B UNLESS OTHERWISE SPECIFIED.



- (13X) INVERTER/CHARGER 2.0 KW
- (67Q) GEN-7.5KW ONAN-QUIET DIESEL
- (39C) GEN-6.5KW ONAN LP MARO GOLD
- (265) CODES/STANDARDS-CSA/CMVSS
- (1B1) CODES/STANDARDS-USA

WINNEBAGO COPYRIGHT 2002 WINNEBAGO INDUSTRIES, INC.

DFTR	ORIG. DATE
CHKR	ALL DIMENSIONS ARE IN MILLIMETERS
P.E.	
M.E.	FIRST USED
DSNR	04 P39W

UNSPECIFIED TOLERANCES ARE: MATERIAL:

WHOLE DIM (X) :
ONE-PLACE (X.X) :
TWO-PLACE (X.XX) :
ANGLE :

THIRD ANGLE PROJECTION

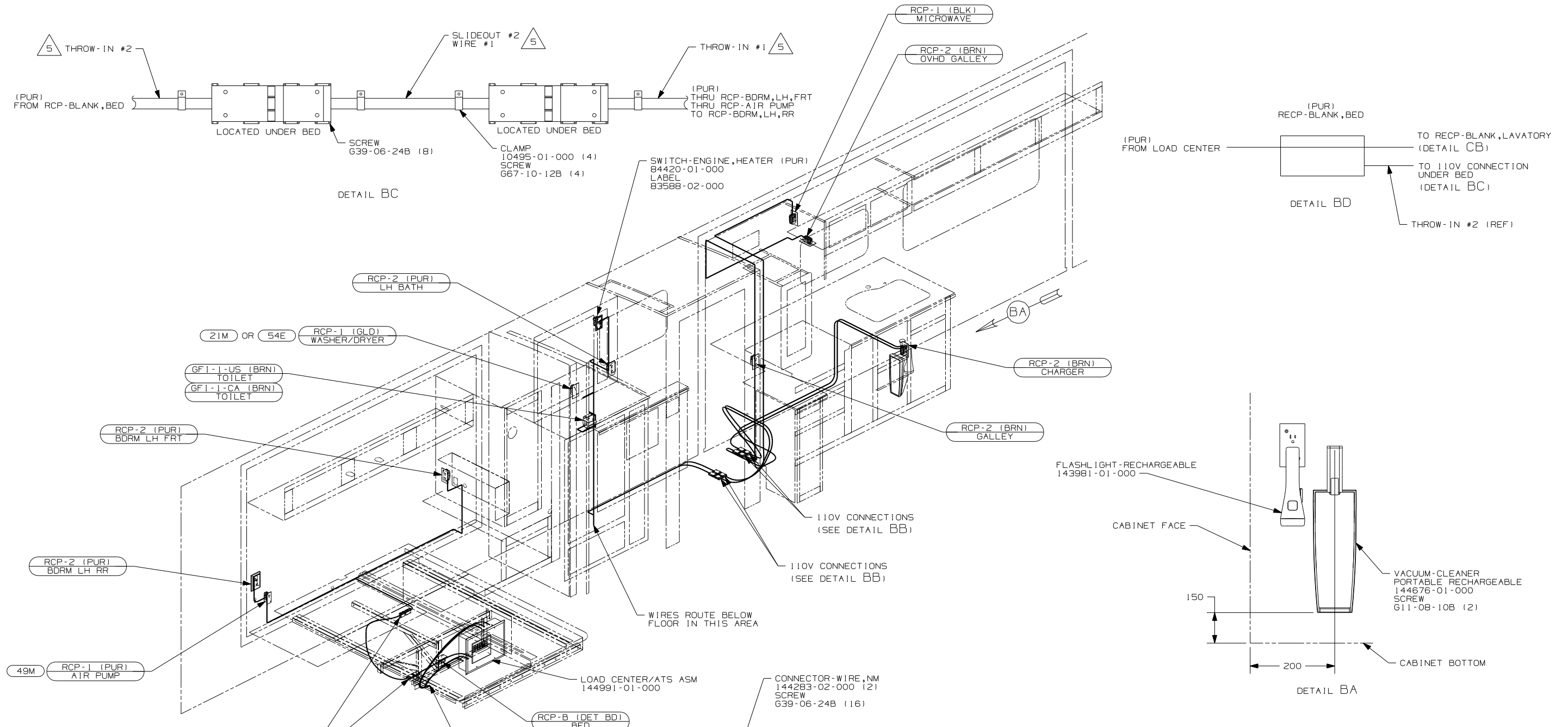
DO NOT SCALE DRAWING

TITLE: WIRING INSTL-BODY 110V

SHEET 1 of 3 PART NO 145320

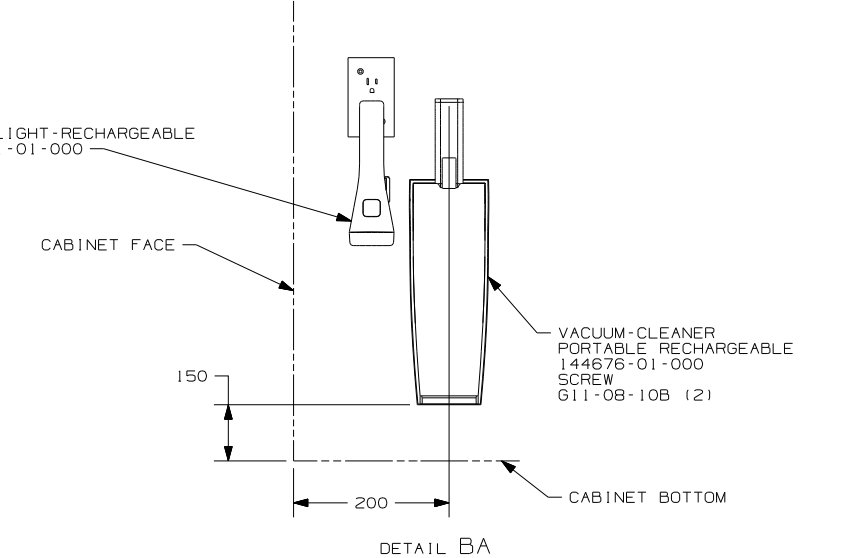
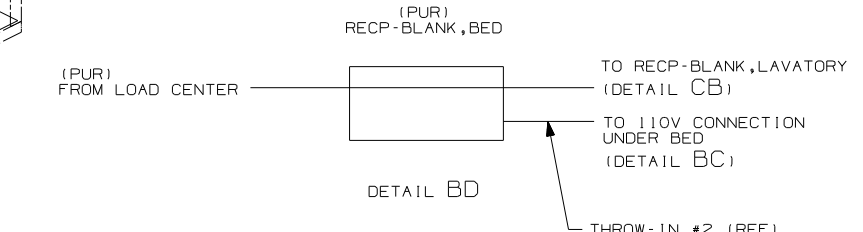
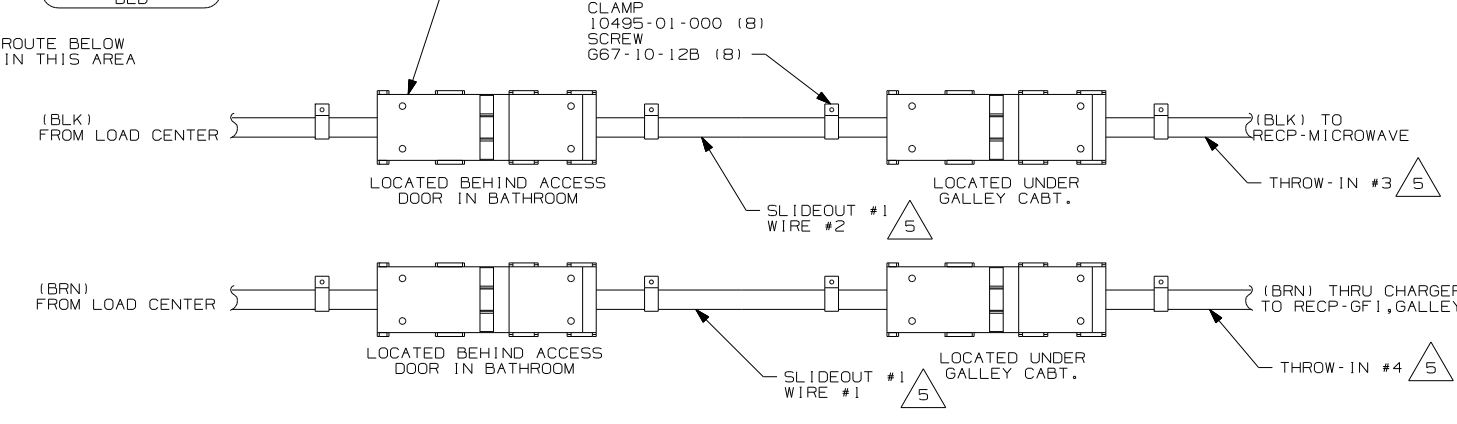
FOR ELECTRICAL TORQUE SPECIFICATIONS SEE DWG NO. 128783-01-000

(X-X) FOR ELECTRICAL CALLOUTS SEE DWG NO. 121339-01-000



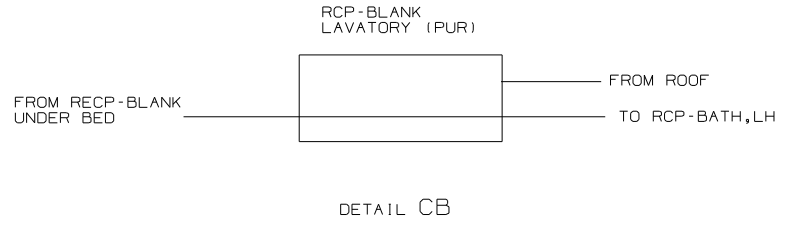
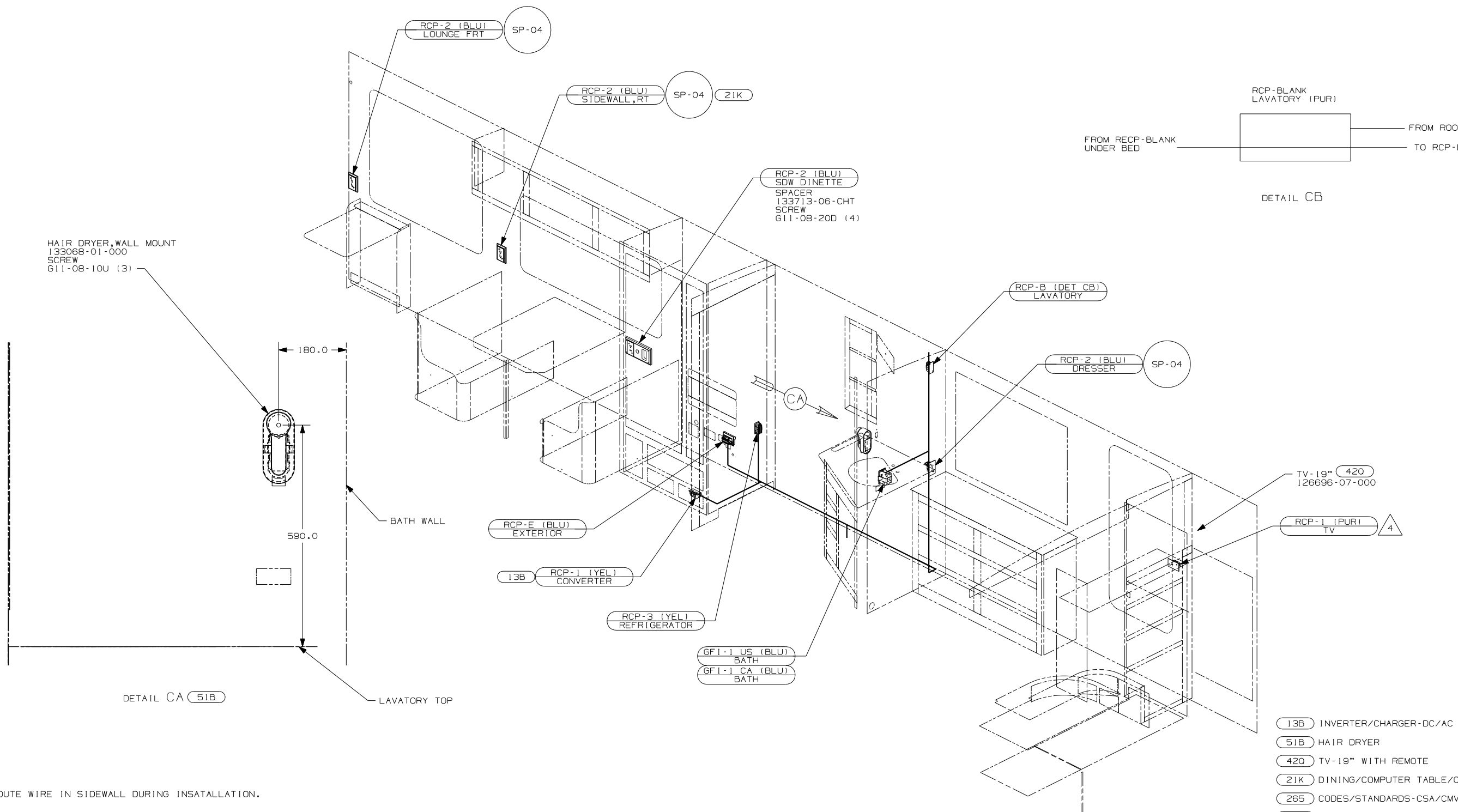
NOTES:

1. ALL WIRES TO BE SECURED WITH CLAMP 10495-01-000 OR CLIP 80734-01-000 EVERY 600MM. USE SCREW 667-10-12B UNLESS OTHERWISE SPECIFIED.
2. ALL 110V WIRE TO BE CLAMPED WITH CLAMP 10497-05-000 WITHIN 200MM OF OUTLET BOXES, USE SCREW 667-10-12B.
3. ALL GROUND WIRE TO BE COVERED WITH TUBING 8041-02-000.
4. FOR MORE INFORMATION SEE WIRING DIAGRAM-BODY, 110V.
5. FOR MORE INFORMATION SEE LOAD CENTER/ATS ASM.

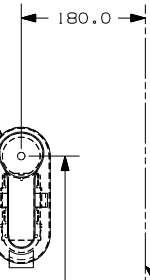


- (21M) WASHER/DRYER PREP
- (54E) WASHER/DRYER
- (49M) SLEEP NUMBER BED-QUEEN SIZE
- (265) CODES/STANDARDS-CSA/CMVSS
- (1B1) CODES/STANDARDS USA

FIRST USED	04 P39W
DO NOT SCALE DRAWING	
TITLE: WIRING INSTL-BODY 110V	
SHEET 2	PART NO 145320



HAIR DRYER, WALL MOUNT
133068-01-000
SCREW
G11-08-10U (3)



DETAIL CA 51B

- NOTES:
- 5 ROUTE WIRE IN SIDEWALL DURING INSATALLATION.
 - 4 WIRE FROM ROOF ASM.
 - 3 WIRE TO BE ROUTED IN SIDEWALL.
 - 2 ALL 110V WIRES TO BE CLAMPED WITH CLAMP 10497-05-000 WITHIN 200MM OF OUTLET BOXES, USE SCREW G67-10-12B.
 - 1 ALL WIRES TO BE SECURED WITH CLAMP 10495-01-000 OR CLIP B0734-01-000 EVERY 600MM. USE SCREW G67-10-12B UNLESS OTHERWISE SPECIFIED.

- 13B INVERTER/CHARGER-DC/AC W/O
- 51B HAIR DRYER
- 420 TV-19" WITH REMOTE
- 21K DINING/COMPUTER TABLE/CHAIRS
- 265 CODES/STANDARDS-CSA/CMVSS
- 1B1 CODES/STANDARDS-USA

FOR ELECTRICAL TORQUE SPECIFICATIONS SEE DWG NO. 128783-01-000

FOR ELECTRICAL CALLOUTS SEE DWG NO. 121339-01-000

FIRST USED	04 P39W
DO NOT SCALE DRAWING	
TITLE:	WIRING INSTL-BODY 110V
SHEET 3	PART NO 145320