



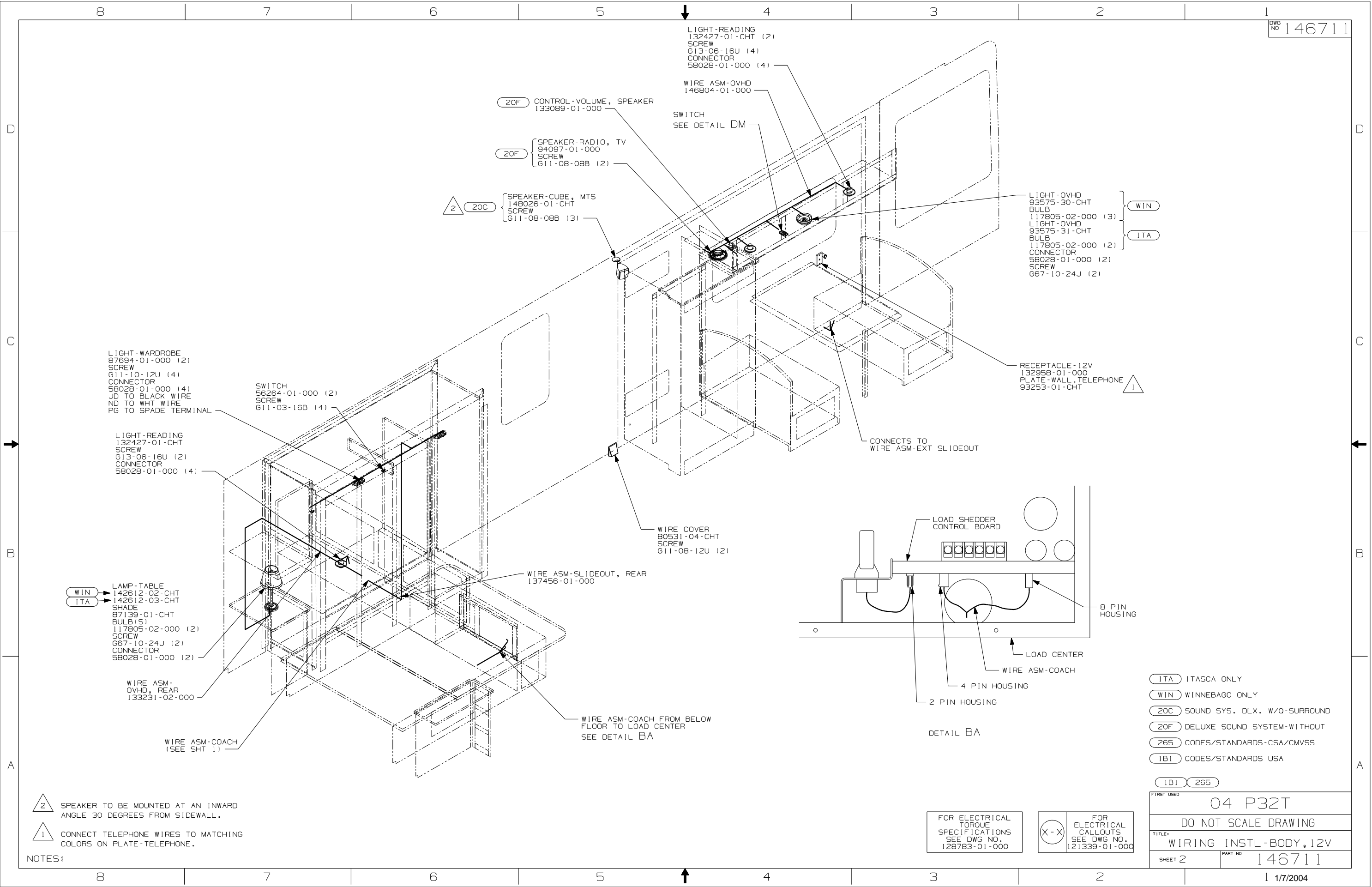
DANGER

Danger of electrical shock, burns or death. Always remove all power sources before attempting any repair, service or diagnostic work. Power can be present from shore power, generator, inverter or battery. All power sources must be disabled and secured before performing any service.



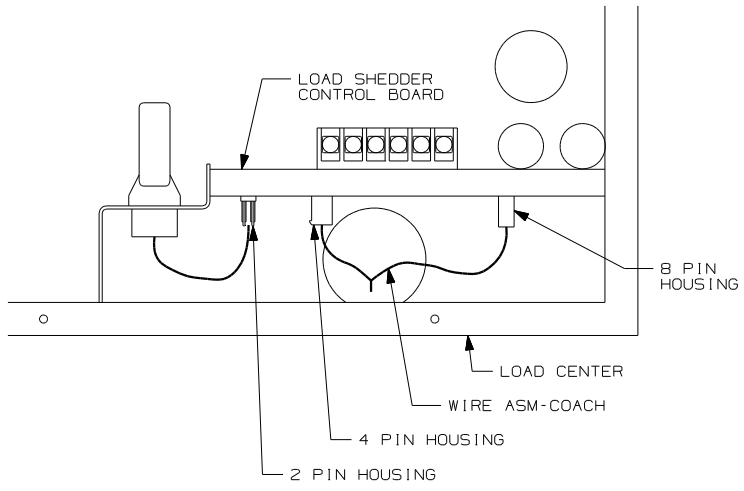
CAUTION

If you lack the skills, tools or equipment to perform diagnostic or repair work leave such work to an authorized Winnebago Industries dealer or other qualified shop.



- LIGHT-OVHD 93575-30-CHT BULB
- 117805-02-000 (3) WIN
- LIGHT-OVHD 93575-31-CHT BULB
- 117805-02-000 (2) ITA
- CONNECTOR 58028-01-000 (2)
- SCREW 667-10-24J (2)

- RECEPTACLE-12V 132958-01-000
- PLATE-WALL, TELEPHONE 93253-01-CHT



DETAIL BA

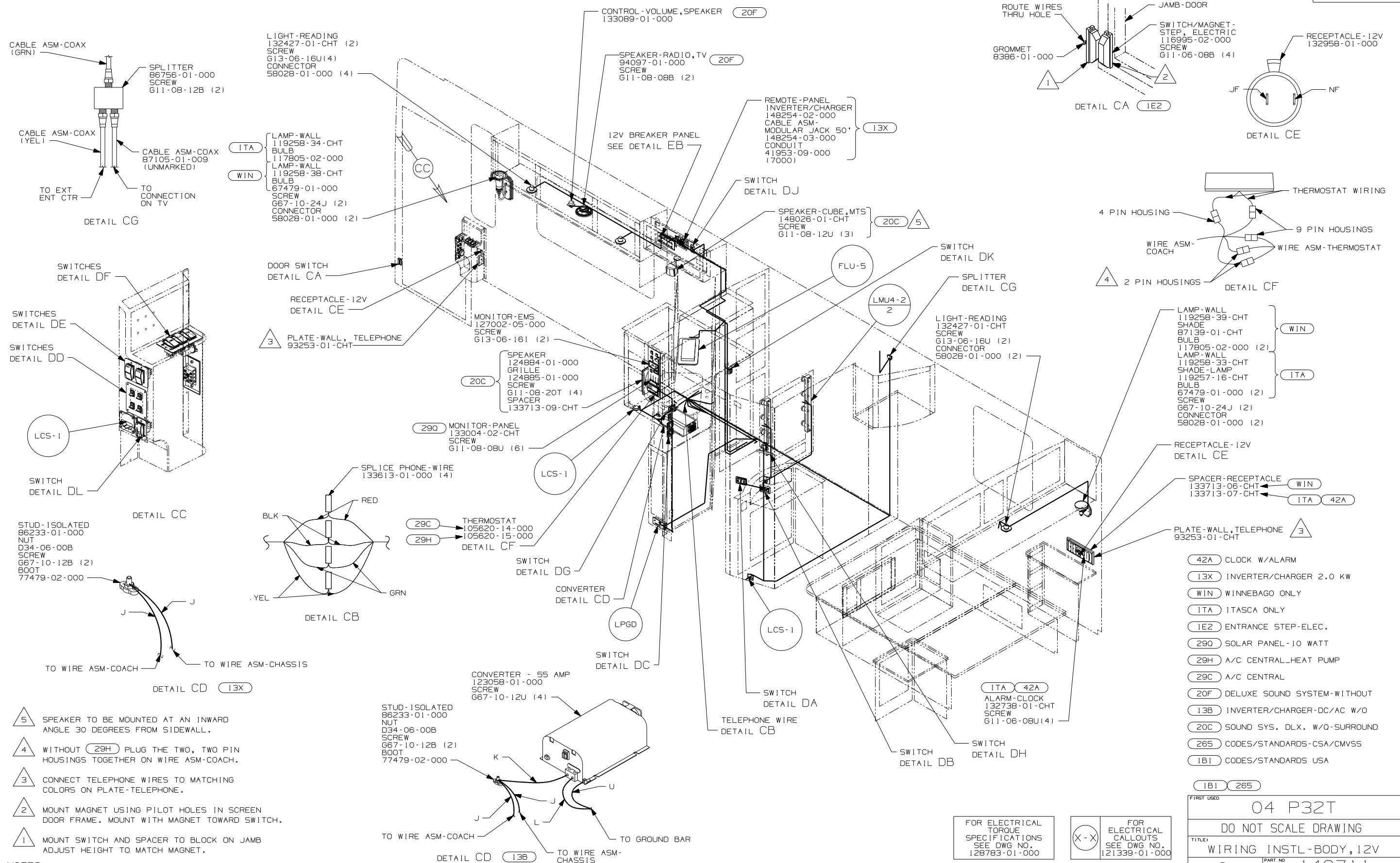
- ITA ITASCA ONLY
- WIN WINNEBAGO ONLY
- 20C SOUND SYS. DLX. W/O-SURROUND
- 20F DELUXE SOUND SYSTEM-WITHOUT
- 265 CODES/STANDARDS-CSA/CMVSS
- 1B1 CODES/STANDARDS USA

FIRST USED	04 P32T
TITLE	DO NOT SCALE DRAWING
	WIRING INSTL-BODY, 12V
SHEET 2	PART NO 146711

FOR ELECTRICAL TORQUE SPECIFICATIONS SEE DWG NO. 128783-01-000

FOR ELECTRICAL CALLOUTS SEE DWG NO. 121339-01-000

- NOTES:
- 2 SPEAKER TO BE MOUNTED AT AN INWARD ANGLE 30 DEGREES FROM SIDEWALL.
 - 1 CONNECT TELEPHONE WIRES TO MATCHING COLORS ON PLATE-TELEPHONE.

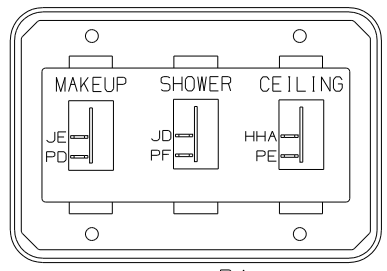


- NOTES:
- 5 SPEAKER TO BE MOUNTED AT AN INWARD ANGLE 30 DEGREES FROM SIDEWALL.
 - 4 WITHOUT (29H) PLUG THE TWO, TWO PIN HOUSINGS TOGETHER ON WIRE ASM-COACH.
 - 3 CONNECT TELEPHONE WIRES TO MATCHING COLORS ON PLATE-TELEPHONE.
 - 2 MOUNT MAGNET USING PILOT HOLES IN SCREEN DOOR FRAME. MOUNT WITH MAGNET TOWARD SWITCH.
 - 1 MOUNT SWITCH AND SPACER TO BLOCK ON JAMB ADJUST HEIGHT TO MATCH MAGNET.

FOR ELECTRICAL TORQUE SPECIFICATIONS SEE DWG NO. 128783-01-000

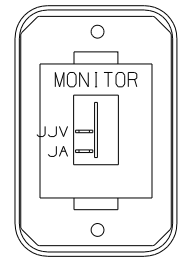
FOR ELECTRICAL CALLOUTS SEE DWG NO. 121339-01-000

FIRST USED	
04 P32T	
DO NOT SCALE DRAWING	
TITLE: WIRING INSTL-BODY, 12V	
SHEET 3	PART NO 146711

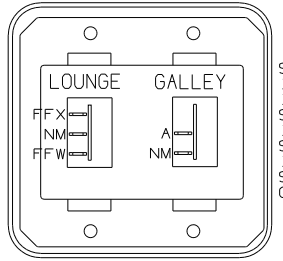


SWITCH-ROCKER
135740-01-CHT (3)
SWITCH-BASE
135741-03-CHT
SWITCH-BEZEL
135742-28-CHT
SCREW
G11-08-08U (4)

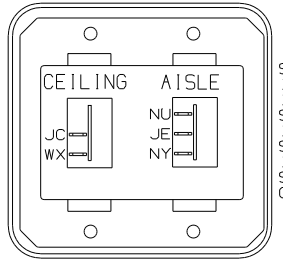
DETAIL DA



SWITCH-ROCKER
135740-01-CHT
SWITCH-BASE
135741-01-CHT
SWITCH-BEZEL
135742-30-CHT
SCREW
G11-08-08U (2)

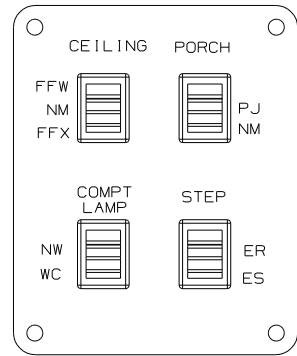


SWITCH-ROCKER
135740-01-CHT
135740-02-CHT
SWITCH-BASE
135741-02-CHT
SWITCH-BEZEL
135742-18-CHT
SCREW
G11-08-08U (4)



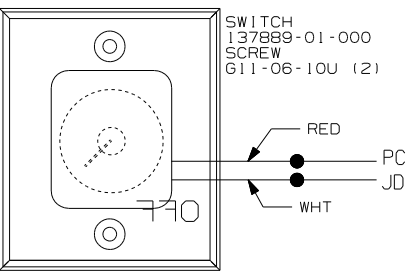
SWITCH-ROCKER
135740-01-CHT
135740-02-CHT
SWITCH-BASE
135741-02-CHT
SWITCH-BEZEL
135742-13-CHT
SCREW
G11-08-08U (4)

DETAIL DC



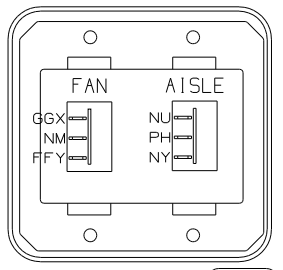
SWITCH
132180-01-CHT (3)
132180-02-CHT
PLATE-SWITCH
98351-08-CHT
SCREW
G11-06-10J

DETAIL DD



SWITCH
137889-01-000
SCREW
G11-06-10U (2)

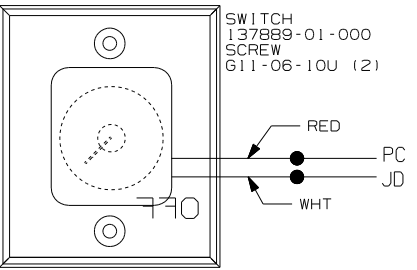
RED
PC
WHT
JD



SWITCH-ROCKER
135740-02-CHT (2)
SWITCH-BASE
135741-02-CHT
SWITCH-BEZEL
135742-02-CHT
SCREW
G11-08-08U (4)
WIRE ASM-RESISTOR,FAN
140195-01-000

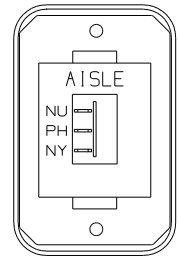


DETAIL DB (41Y)



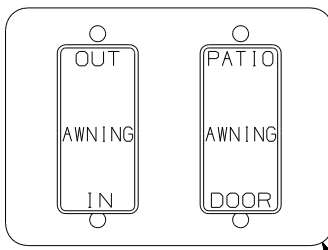
SWITCH
137889-01-000
SCREW
G11-06-10U (2)

RED
PC
WHT
JD



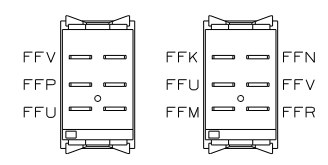
SWITCH-ROCKER
135740-02-CHT
SWITCH-BASE
135741-01-CHT
SWITCH-BEZEL
135742-06-CHT
SCREW
G11-08-08U (2)

DETAIL DB (412)



SWITCH-AWNING, CONTROL
108357-06-000
ACTUATOR
108356-12-CHT
SWITCH-AWNING, SELECT
108357-08-000
ACTUATOR
108356-13-CHT

DETAIL DE (FRONT SIDE) (9C1)



DETAIL DE (BACK SIDE) (9C1)

PLATE-SWITCH
98351-22-CHT
SCREW
G11-06-10U (4)

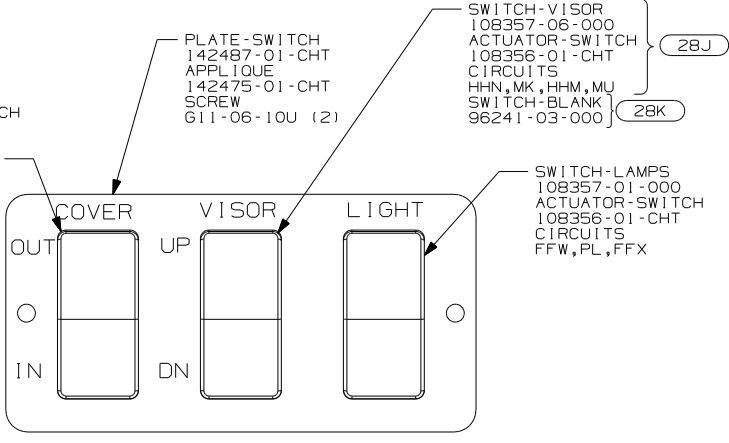


PLATE-SWITCH
142487-01-CHT
APPLIQUE
142475-01-CHT
SCREW
G11-06-10U (2)

SWITCH-VISOR
108357-06-000
ACTUATOR-SWITCH
108356-01-CHT
CIRCUITS
HHN,MK,HHM,MU
SWITCH-BLANK
96241-03-000

SWITCH-LAMPS
108357-01-000
ACTUATOR-SWITCH
108356-01-CHT
CIRCUITS
FFW,PL,FFX

DETAIL DF

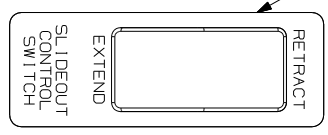
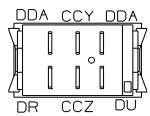


PLATE-SWITCH
144363-09-CHT
SWITCH
108357-06-000
ACTUATOR
108356-02-CHT
NUT
D65-08-00B (2)
LABEL
116220-01-000

LABEL-WARNING
116549-01-000

WARNING UNDERSTAND OPERATOR'S MANUAL BEFORE USING
KEEP PEOPLE AND OBSTRUCTIONS CLEAR OF
SLIDEOUT ROOM WHEN OPERATING TO AVOID
INJURY AND/OR PROPERTY DAMAGE

DETAIL DG (FRONT VIEW)



DETAIL DG (REAR VIEW)

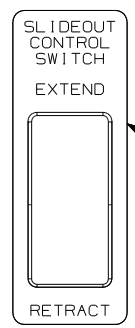
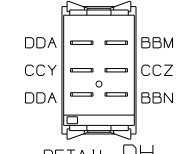


PLATE-SWITCH
144363-09-CHT
SWITCH
108357-06-CHT
ACTUATOR
108356-02-CHT
NUT
D65-08-00B (2)
LABEL
116220-01-000

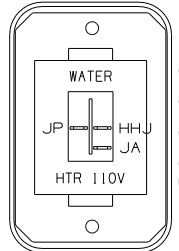
LABEL-WARNING
116549-01-000

WARNING UNDERSTAND OPERATOR'S MANUAL BEFORE USING
KEEP PEOPLE AND OBSTRUCTIONS CLEAR OF
SLIDEOUT ROOM WHEN OPERATING TO AVOID
INJURY AND/OR PROPERTY DAMAGE

DETAIL DH (FRONT VIEW)

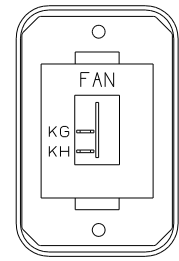


DETAIL DH (REAR VIEW)



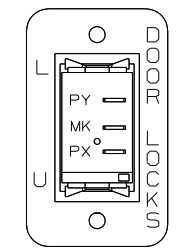
SWITCH-ROCKER
135740-06-CHT
SWITCH-BASE
135741-01-CHT
SWITCH-BEZEL
135742-35-CHT
SCREW
G11-08-08U (2)

DETAIL DJ



SWITCH-ROCKER
135740-01-CHT
SWITCH-BASE
135741-01-CHT
SWITCH-BEZEL
135742-12-CHT
SCREW
G11-08-08U (2)

DETAIL DK



SWITCH-DOOR LOCK
108357-07-000
ACTUATOR
108356-01-CHT
PLATE
98351-24-CHT
SCREW
G11-06-10J (2)

DETAIL DL (40G)

- (40G) POWER DOOR LOCK WITH REMOTE
- (41Y) FAN - CEILING
- (412) DECORATIVE LIGHT - CEILING
- (28K) SUNVISORS - MANUAL (2)
- (28J) SUNVISORS - POWERED (2)
- (9C1) AWNING-ELECTRIC PACKAGE
- (265) CODES/STANDARDS-CSA/CMVSS
- (1B1) CODES/STANDARDS USA

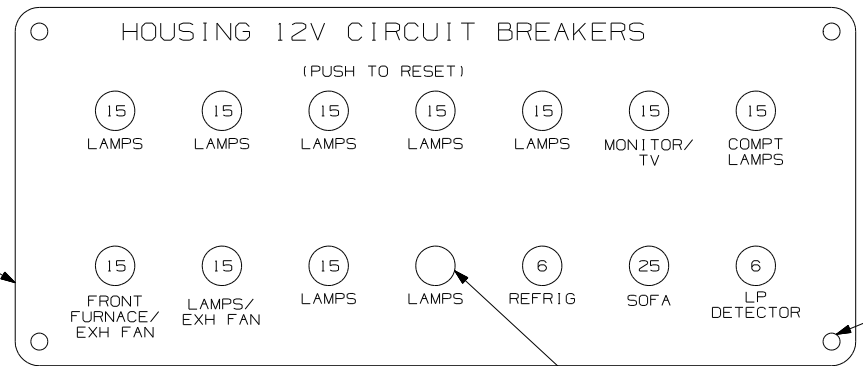
(1B1) (265)

CONNECT WIRE ASM-RESISTOR,FAN TO 2-PIN HOUSING LOCATED BY THE SWITCH WIRES

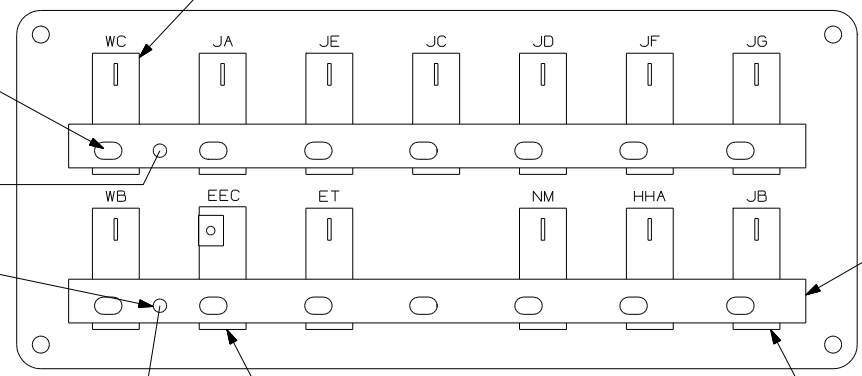
FOR ELECTRICAL TORQUE SPECIFICATIONS SEE DWG NO. 128783-01-000

FOR ELECTRICAL CALLOUTS SEE DWG NO. 121339-01-000

FIRST USED	
04 P32T	
DO NOT SCALE DRAWING	
TITLE: WIRING INSTL-BODY,12V	
SHEET 4	PART NO 146711



CIRCUIT BREAKER (FRONT VIEW) DETAIL EB



CIRCUIT BREAKER (BACK VIEW) DETAIL EB

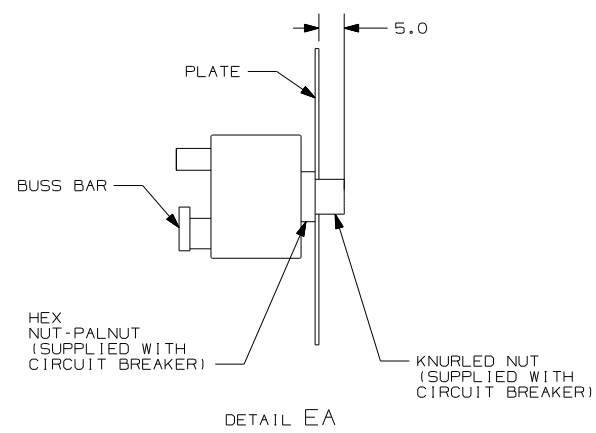


PLATE 139067-03-CHT LABEL 92547-12-000

PLUG-PLASTIC, BLACK 81211-04-000

SCREW 611-10-12U (4)

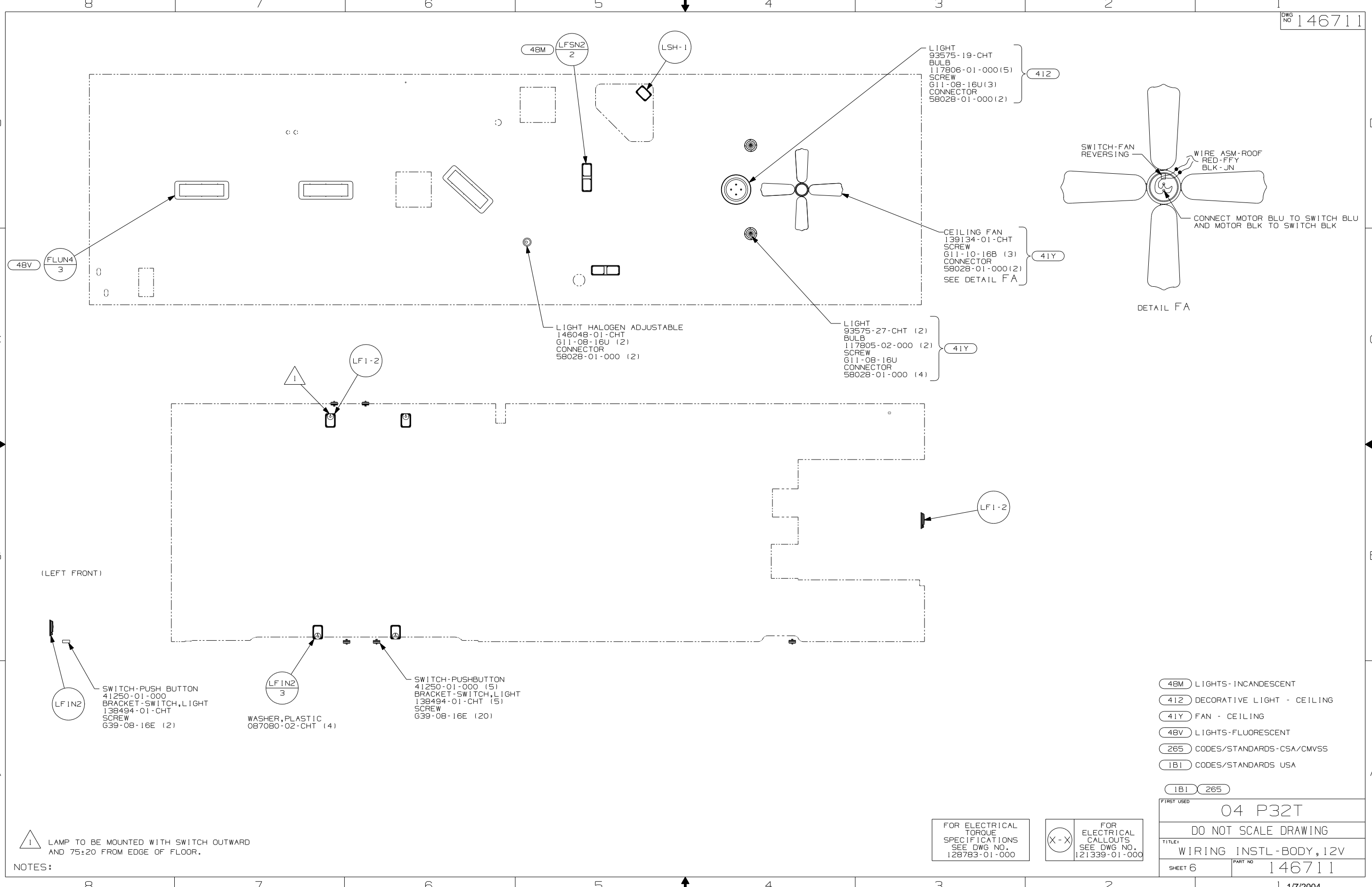
265 CODES/STANDARDS-CSA/CMVSS
1B1 CODES/STANDARDS USA

1B1 265

FIRST USED	04 P32T
TITLE	DO NOT SCALE DRAWING
TITLE	WIRING INSTL-BODY, 12V
SHEET 5	PART NO 146711

FOR ELECTRICAL TORQUE SPECIFICATIONS SEE DWG NO. 128783-01-000

FOR ELECTRICAL CALLOUTS SEE DWG NO. 121339-01-000

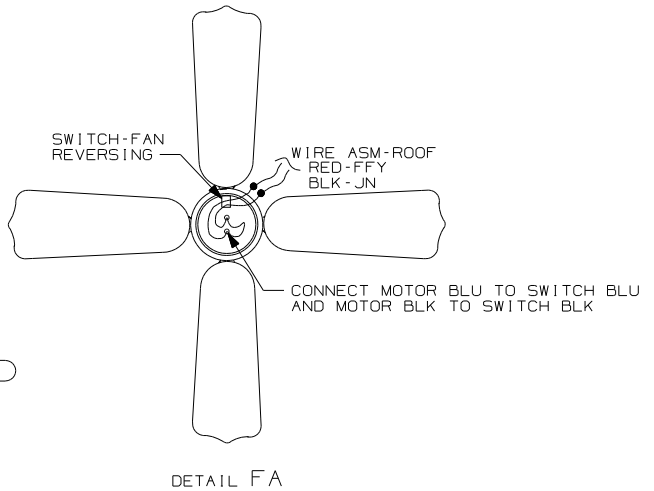


LIGHT
93575-19-CHT
BULB
117806-01-000 (5)
SCREW
G11-08-16U (3)
CONNECTOR
58028-01-000 (2)

412

CEILING FAN
139134-01-CHT
SCREW
G11-10-16B (3)
CONNECTOR
58028-01-000 (2)
SEE DETAIL FA

41Y



LIGHT HALOGEN ADJUSTABLE
146048-01-CHT
G11-08-16U (2)
CONNECTOR
58028-01-000 (2)

41Y

LIGHT
93575-27-CHT (2)
BULB
117805-02-000 (2)
SCREW
G11-08-16U
CONNECTOR
58028-01-000 (4)

41Y

SWITCH-PUSH BUTTON
41250-01-000
BRACKET-SWITCH, LIGHT
138494-01-CHT
SCREW
G39-08-16E (2)

LF1N2

WASHER, PLASTIC
087080-02-CHT (4)

LF1N2
3

SWITCH-PUSHBUTTON
41250-01-000 (5)
BRACKET-SWITCH, LIGHT
138494-01-CHT (5)
SCREW
G39-08-16E (20)

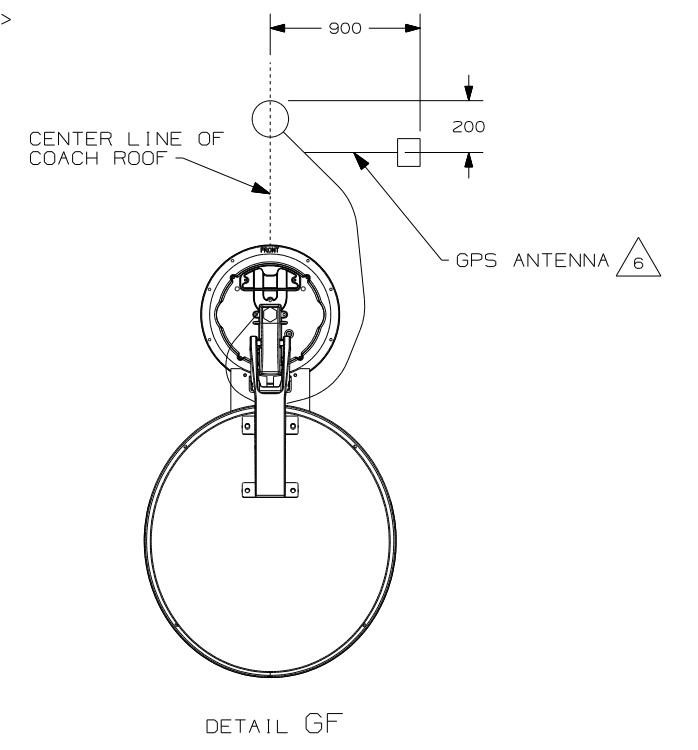
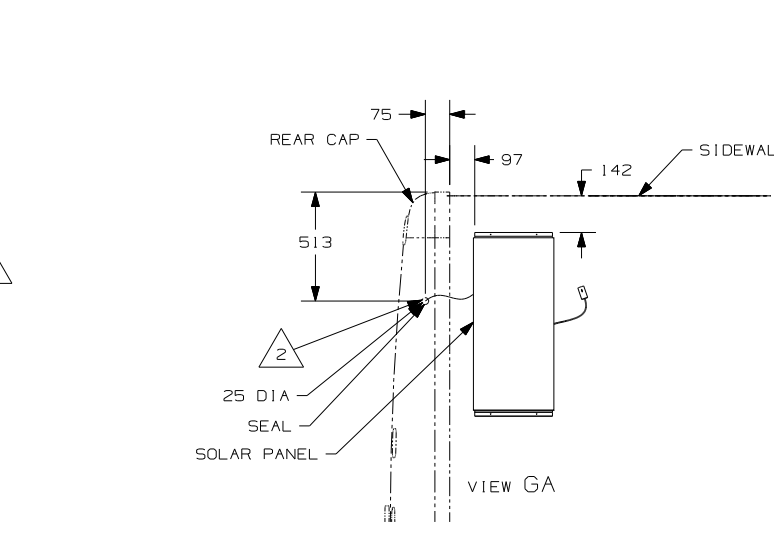
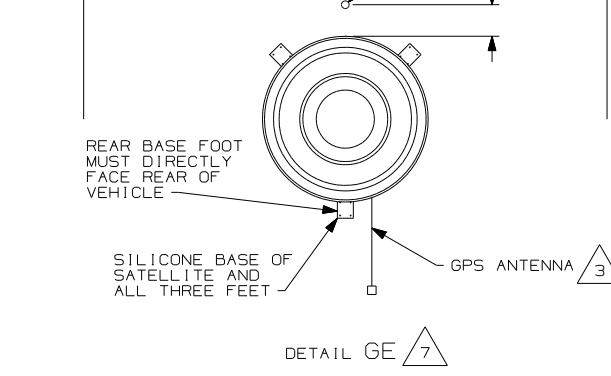
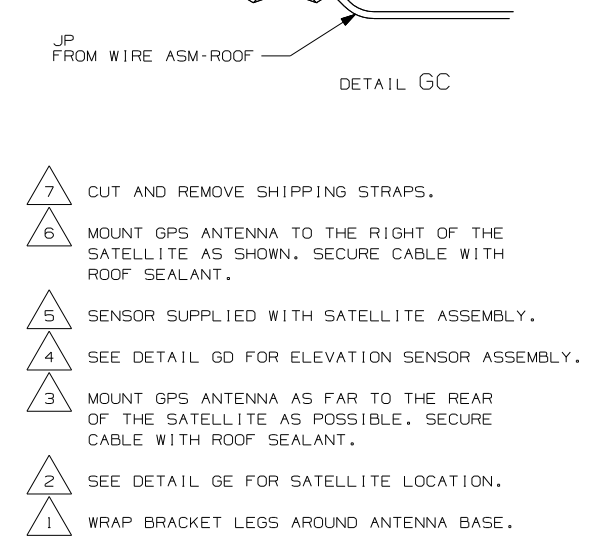
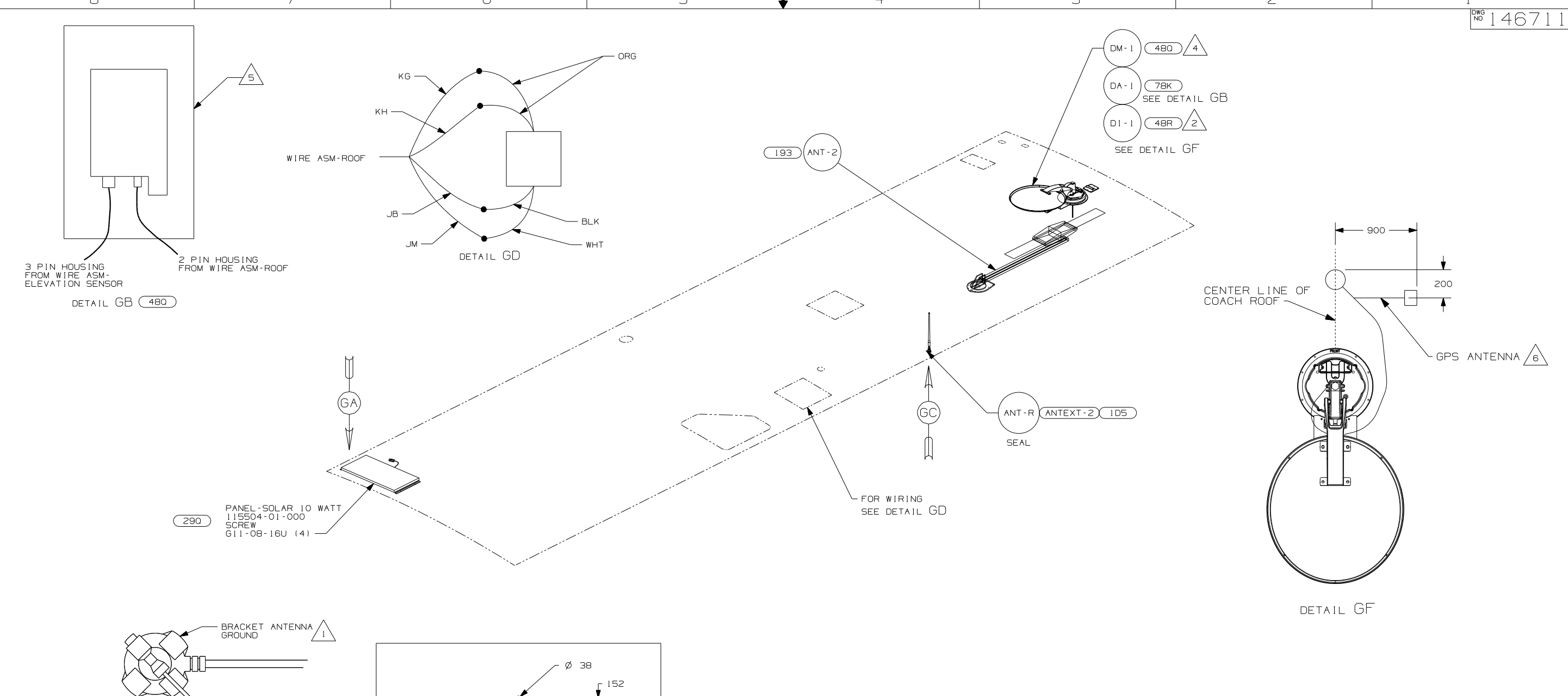
- 48M LIGHTS- INCANDESCENT
- 412 DECORATIVE LIGHT - CEILING
- 41Y FAN - CEILING
- 48V LIGHTS-FLUORESCENT
- 265 CODES/STANDARDS-CSA/CMVSS
- 1B1 CODES/STANDARDS USA

FIRST USED	04 P32T
DO NOT SCALE DRAWING	
TITLE:	WIRING INSTL-BODY, 12V
SHEET 6	PART NO 146711

NOTES:
 1 LAMP TO BE MOUNTED WITH SWITCH OUTWARD AND 75±20 FROM EDGE OF FLOOR.

FOR ELECTRICAL TORQUE SPECIFICATIONS SEE DWG NO. 128783-01-000

FOR ELECTRICAL CALLOUTS SEE DWG NO. 121339-01-000



- (78K) SATELLITE DISH-AUTOMATIC
- (48R) SAT SYS IN-MOTION W/O RCVR
- (26L) REAR STEREO SYSTEM W/CASSETTE
- (25E) REAR STEREO SYSTEM W/CD
- (290) SOLAR PANEL-10 WATT
- (1D5) ENTERTAINMENT CENTR/EXT W/CD
- (480) SATELLITE DISH & ELEV.SENSOR
- (193) TV ANTENNA-AMPLIFIED SYSTEM
- (265) CODES/STANDARDS-CSA/CMVSS
- (1B1) CODES/STANDARDS USA

- NOTES:
- (7) CUT AND REMOVE SHIPPING STRAPS.
 - (6) MOUNT GPS ANTENNA TO THE RIGHT OF THE SATELLITE AS SHOWN. SECURE CABLE WITH ROOF SEALANT.
 - (5) SENSOR SUPPLIED WITH SATELLITE ASSEMBLY.
 - (4) SEE DETAIL GD FOR ELEVATION SENSOR ASSEMBLY.
 - (3) MOUNT GPS ANTENNA AS FAR TO THE REAR OF THE SATELLITE AS POSSIBLE. SECURE CABLE WITH ROOF SEALANT.
 - (2) SEE DETAIL GE FOR SATELLITE LOCATION.
 - (1) WRAP BRACKET LEGS AROUND ANTENNA BASE.

FIRST USED	04 P32T
TITLE	DO NOT SCALE DRAWING
WIRING INSTL-BODY, 12V	
SHEET 7	PART NO 146711