



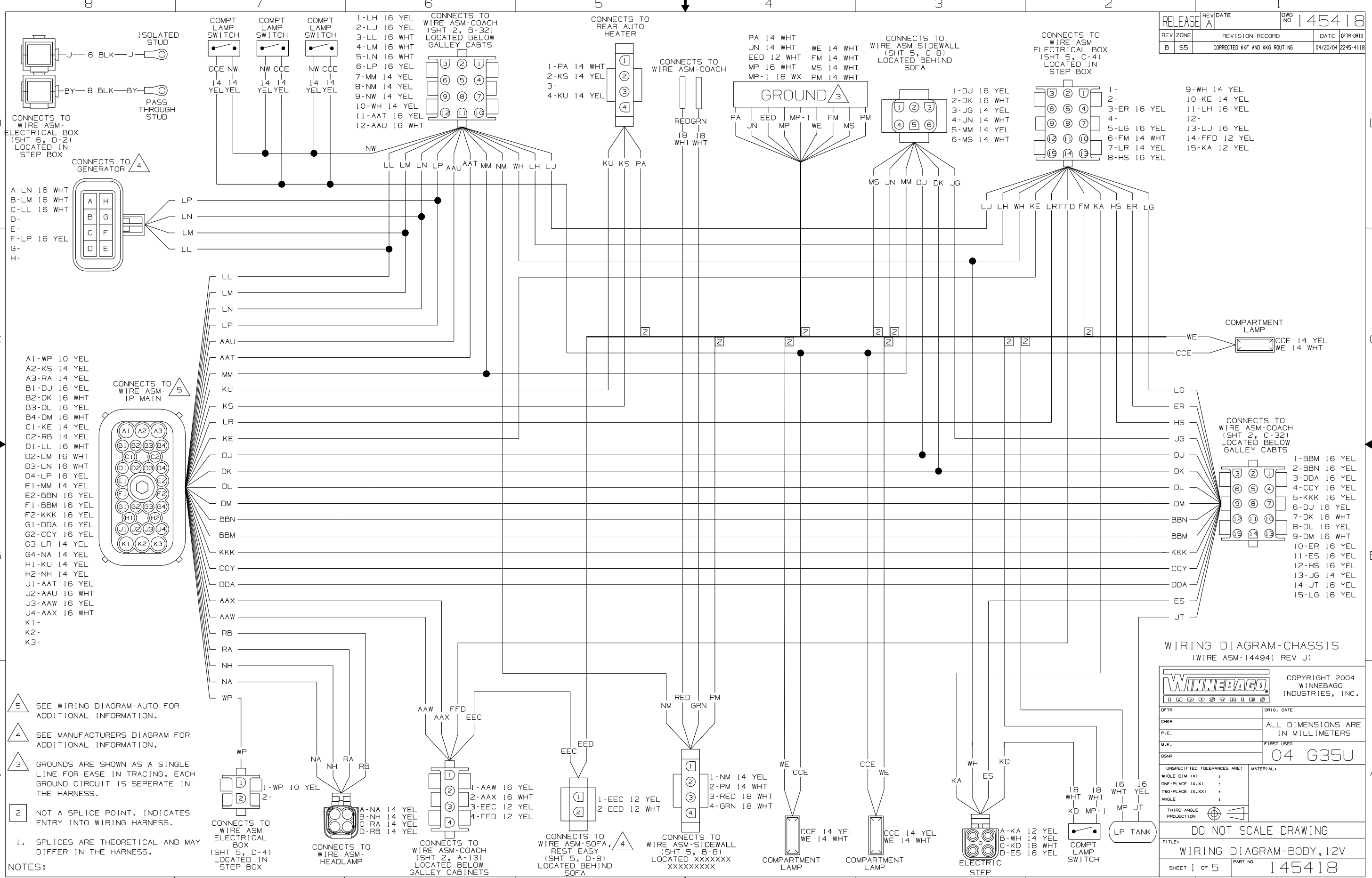
DANGER

Danger of electrical shock, burns or death. Always remove all power sources before attempting any repair, service or diagnostic work. Power can be present from shore power, generator, inverter or battery. All power sources must be disabled and secured before performing any service.

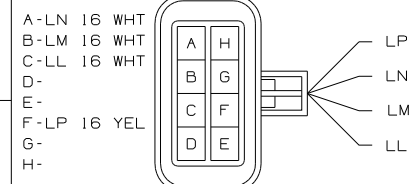


CAUTION

If you lack the skills, tools or equipment to perform diagnostic or repair work leave such work to an authorized Winnebago Industries dealer or other qualified shop.



CONNECTS TO WIRE ASM-ELECTRICAL BOX (SHT 6, D-2) LOCATED IN STEP BOX

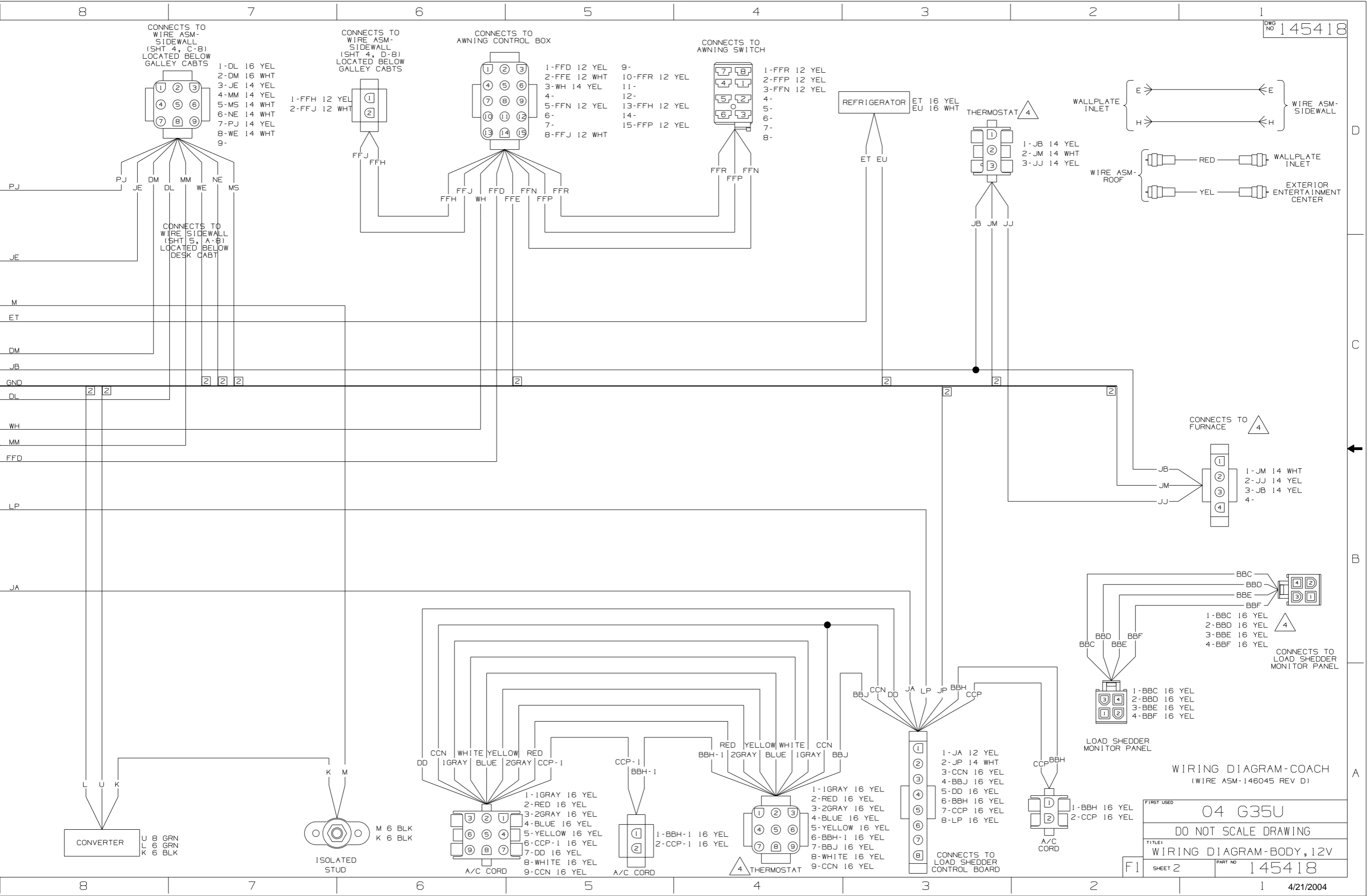


- A1-WP 10 YEL
- A2-KS 14 YEL
- A3-RA 14 YEL
- B1-DJ 16 YEL
- B2-DK 16 WHT
- B3-DL 16 YEL
- B4-DM 16 WHT
- C1-KE 14 YEL
- C2-RB 14 YEL
- D1-LL 16 WHT
- D2-LM 16 WHT
- D3-LN 16 WHT
- D4-LP 16 YEL
- E1-MM 14 YEL
- E2-BBN 16 YEL
- F1-BBM 16 YEL
- F2-KKK 16 YEL
- G1-DDA 16 YEL
- G2-CCY 16 YEL
- G3-LR 14 YEL
- G4-NA 14 YEL
- H1-KU 14 YEL
- H2-NH 14 YEL
- J1-AAT 16 YEL
- J2-AAU 16 WHT
- J3-AAW 16 YEL
- J4-AAX 16 WHT
- K1-
- K2-
- K3-

- NOTES:
1. SPLICES ARE THEORETICAL AND MAY DIFFER IN THE HARNESS.

WIRING DIAGRAM-CHASSIS
(WIRE ASM-144941 REV J)

WINNEBAGO		COPYRIGHT 2004 WINNEBAGO INDUSTRIES, INC.
DFTR	ORIG. DATE	
CHKR	ALL DIMENSIONS ARE IN MILLIMETERS	
P.E.	FIRST USED	04 G35U
M.E.		
DSNR		
UNSPECIFIED TOLERANCES ARE:		MATERIAL:
WHOLE DIM (X)	:	
ONE-PLACE (X.X)	:	
TWO-PLACE (X.XX)	:	
ANGLE	:	
THIRD ANGLE PROJECTION		
DO NOT SCALE DRAWING		
TITLE: WIRING DIAGRAM-BODY, 12V		
SHEET 1 OF 5	PART NO	145418
REF: NONE 1 4/21/2004		



CONNECTS TO WIRE ASM-SIDEWALL (SHT 4, C-8) LOCATED BELOW GALLEY CABTS

- 1-DL 16 YEL
- 2-DM 16 WHT
- 3-JE 14 YEL
- 4-MM 14 YEL
- 5-MS 14 WHT
- 6-NE 14 WHT
- 7-PJ 14 YEL
- 8-WE 14 WHT
- 9-

CONNECTS TO WIRE ASM-SIDEWALL (SHT 4, D-8) LOCATED BELOW GALLEY CABTS

- 1-FFH 12 YEL
- 2-FFJ 12 WHT

CONNECTS TO AWNING CONTROL BOX

- 1-FFD 12 YEL
- 2-FFE 12 WHT
- 3-WH 14 YEL
- 4-
- 5-FFN 12 YEL
- 6-
- 7-
- 8-FFJ 12 WHT

- 9-
- 10-FFR 12 YEL
- 11-
- 12-
- 13-FFH 12 YEL
- 14-
- 15-FFP 12 YEL

CONNECTS TO AWNING SWITCH

- 1-FFR 12 YEL
- 2-FFP 12 YEL
- 3-FFN 12 YEL
- 4-
- 5-
- 6-
- 7-
- 8-

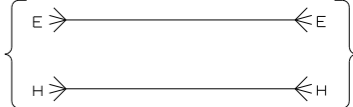
REFRIGERATOR

- ET 16 YEL
- EU 16 WHT

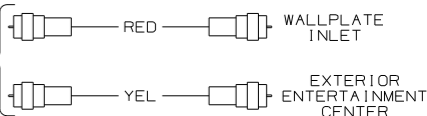
THERMOSTAT

- 1-JB 14 YEL
- 2-JM 14 WHT
- 3-JJ 14 YEL

WALLPLATE INLET



WIRE ASM-ROOF

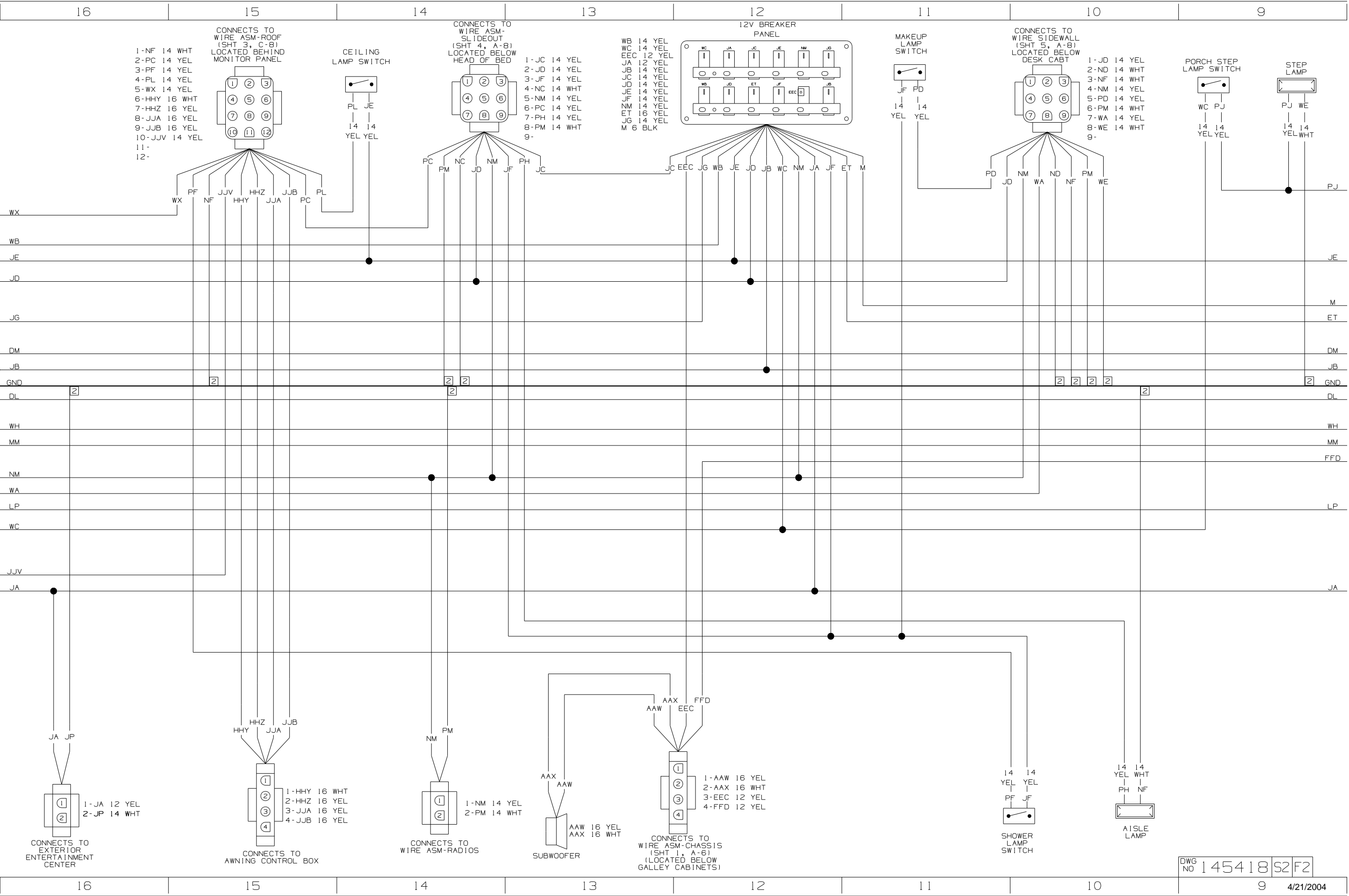


CONNECTS TO FURNACE

- 1-JM 14 WHT
- 2-JJ 14 YEL
- 3-JB 14 YEL
- 4-

WIRING DIAGRAM-COACH (WIRE ASM-146045 REV D)

FIRST USED	04 G35U
TITLE	DO NOT SCALE DRAWING
TITLE	WIRING DIAGRAM-BODY, 12V
SHEET 2	PART NO 145418



CONNECTS TO WIRE ASM-ROOF (SHT 3, C-8) LOCATED BEHIND MONITOR PANEL

1-NF 14 WHT
 2-PC 14 YEL
 3-PF 14 YEL
 4-PL 14 YEL
 5-WX 14 YEL
 6-HHY 16 WHT
 7-HHZ 16 YEL
 8-JJA 16 YEL
 9-JJB 16 YEL
 10-JJV 14 YEL
 11-
 12-

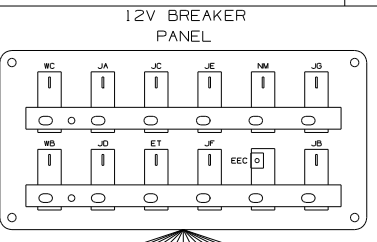
CEILING LAMP SWITCH

PL JE
 14 14
 YEL YEL

CONNECTS TO WIRE ASM-SLIDEOUT (SHT 4, A-8) LOCATED BELOW HEAD OF BED

1-JC 14 YEL
 2-JD 14 YEL
 3-JF 14 YEL
 4-NC 14 WHT
 5-NM 14 YEL
 6-PC 14 YEL
 7-PH 14 YEL
 8-PM 14 WHT
 9-

WB 14 YEL
 WC 14 YEL
 EEC 12 YEL
 JA 12 YEL
 JB 14 YEL
 JC 14 YEL
 JD 14 YEL
 JE 14 YEL
 JF 14 YEL
 NM 14 YEL
 ET 16 YEL
 JG 14 YEL
 M 6 BLK



MAKEUP LAMP SWITCH

JF PD
 14 14
 YEL YEL

CONNECTS TO WIRE SIDEWALL (SHT 5, A-8) LOCATED BELOW DESK CABT

1-JD 14 YEL
 2-ND 14 WHT
 3-NF 14 WHT
 4-NM 14 YEL
 5-PD 14 YEL
 6-PM 14 WHT
 7-WA 14 YEL
 8-WE 14 WHT
 9-

PORCH STEP LAMP SWITCH

WC PJ
 14 14
 YEL YEL

STEP LAMP

PJ WE
 14 14
 YEL WHT

CONNECTS TO EXTERIOR ENTERTAINMENT CENTER

1-JA 12 YEL
 2-JP 14 WHT

CONNECTS TO AWNING CONTROL BOX

1-HHY 16 WHT
 2-HHZ 16 YEL
 3-JJA 16 YEL
 4-JJB 16 YEL

CONNECTS TO WIRE ASM-RADIOS

1-NM 14 YEL
 2-PM 14 WHT

SUBWOOFER

AAW 16 YEL
 AAX 16 WHT

CONNECTS TO WIRE ASM-CHASSIS (SHT 1, A-8) (LOCATED BELOW GALLEY CABINETS)

1-AAW 16 YEL
 2-AAX 16 WHT
 3-EEC 12 YEL
 4-FFD 12 YEL

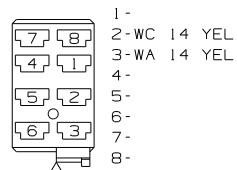
SHOWER LAMP SWITCH

14 14
 YEL YEL
 PF JF

AISLE LAMP

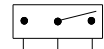
14 14
 YEL WHT
 PH NF

CONNECTS TO DRAINAGE COMP LAMP SWITCH



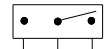
WC WA

BATH/HALLWAY LAMP SWITCH



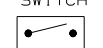
JD YM YN
14 14 14
YEL YEL YEL

BATH/HALLWAY LAMP SWITCH



YN YM WX
14 14 14
YEL YEL YEL

COMPARTMENT LAMP SWITCH



NW CCG
14 14
YEL YEL

COMPARTMENT LAMP



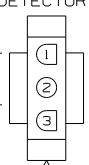
CCG WE
14 14
YEL WHT

GALLEY CEILING LAMP SWITCH



A JE
14 14
YEL YEL

CONNECTS TO LP DETECTOR



1-UK 16 WHT
2-
3-WB 14 YEL

UK WB



WX

WB

JE

JD

JG

DM

JB

GND

DL

WH

MM

NM

WA

LP

WC

JJV

JA

EU

MS

GL

JM

JY

HT-1

KF

UK

NE

JP

JX

NC

ND

PM

WE

NF

FFE

2

2

2

2

2

2

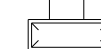
2



WATER PUMP



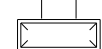
COMPARTMENT LAMP SWITCH



COMPARTMENT LAMP



COMPARTMENT LAMP SWITCH



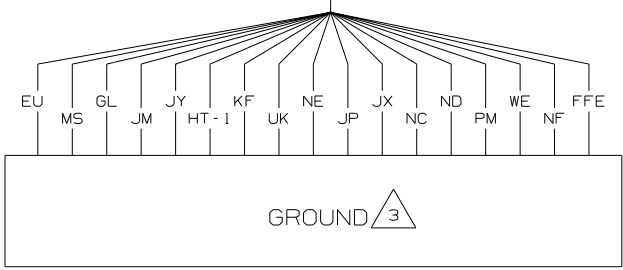
COMPARTMENT LAMP



COMPARTMENT LAMP

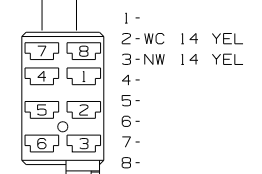


COMPARTMENT LAMP SWITCH



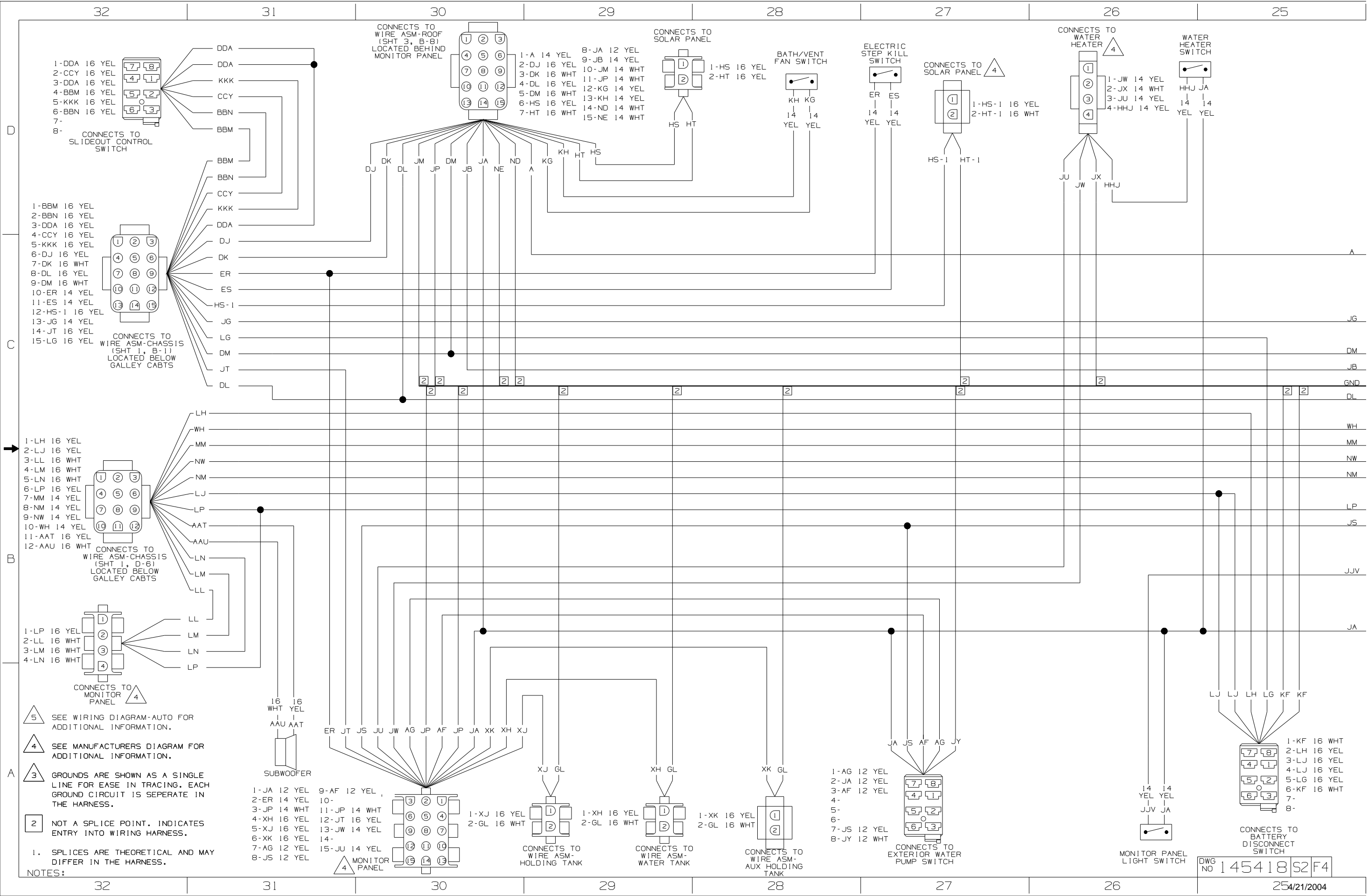
GROUND 3

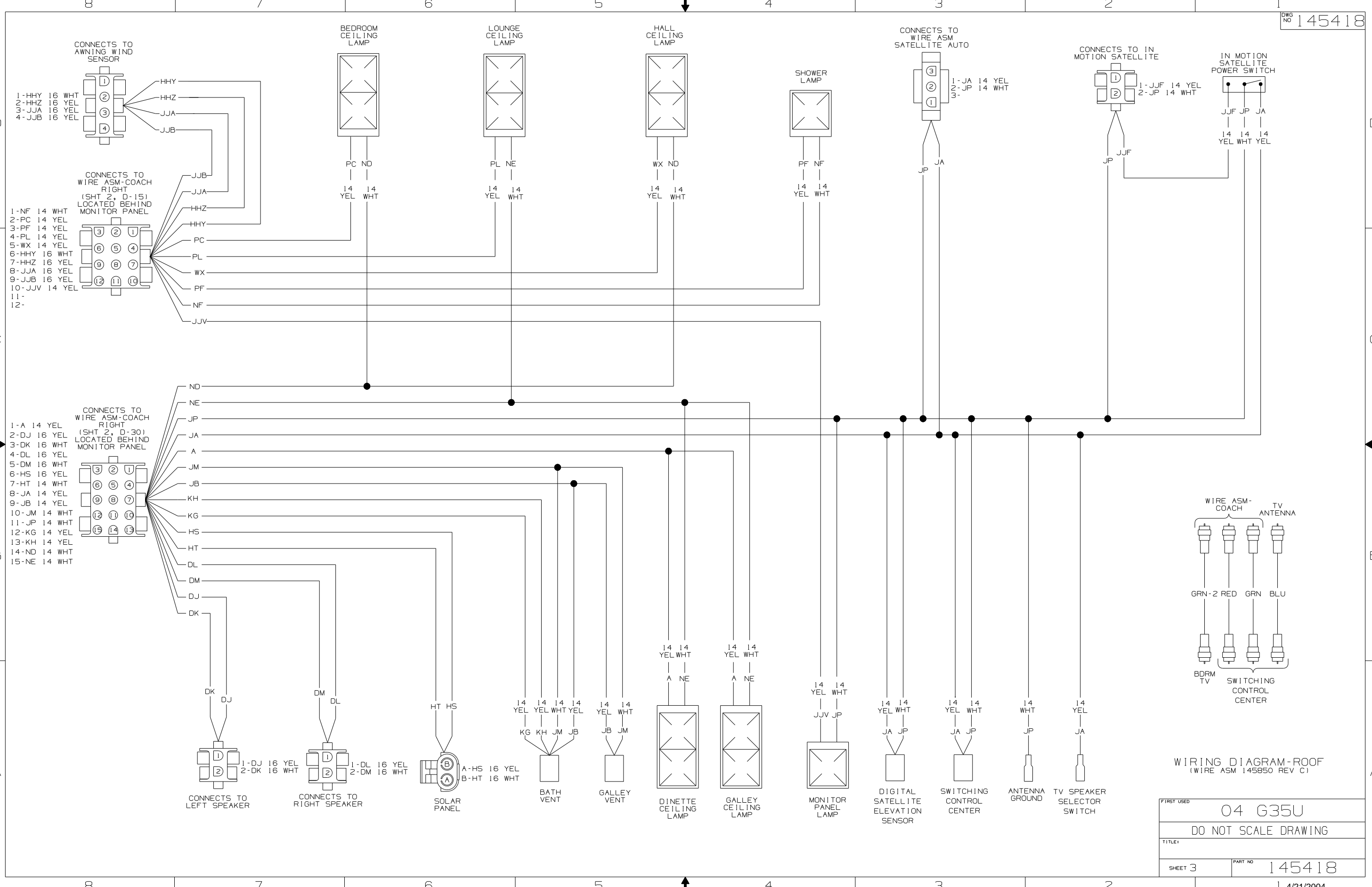
- GL 16 WHT
- JM 14 WHT
- JY 12 WHT
- HT-1 16 WHT
- KF 16 WHT
- UK 16 WHT
- NE 14 WHT
- EU 16 WHT
- MS 14 WHT
- JP 14 WHT
- JX 14 WHT
- NC 14 WHT
- ND 14 WHT
- PM 14 WHT
- WE 14 WHT
- NF 14 WHT
- FFE 12 WHT



1-
2-WC 14 YEL
3-NW 14 YEL
4-
5-
6-
7-
8-

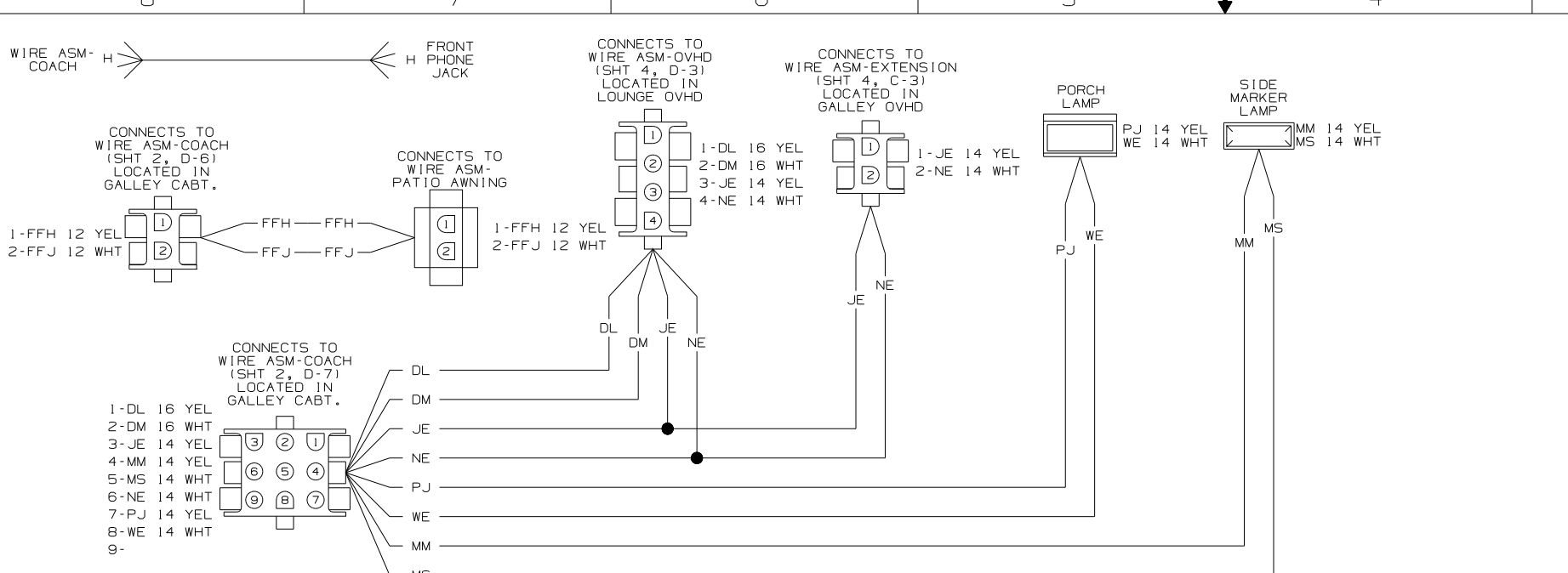
CONNECTS TO MASTER COMPARTMENT LAMPS SWITCH



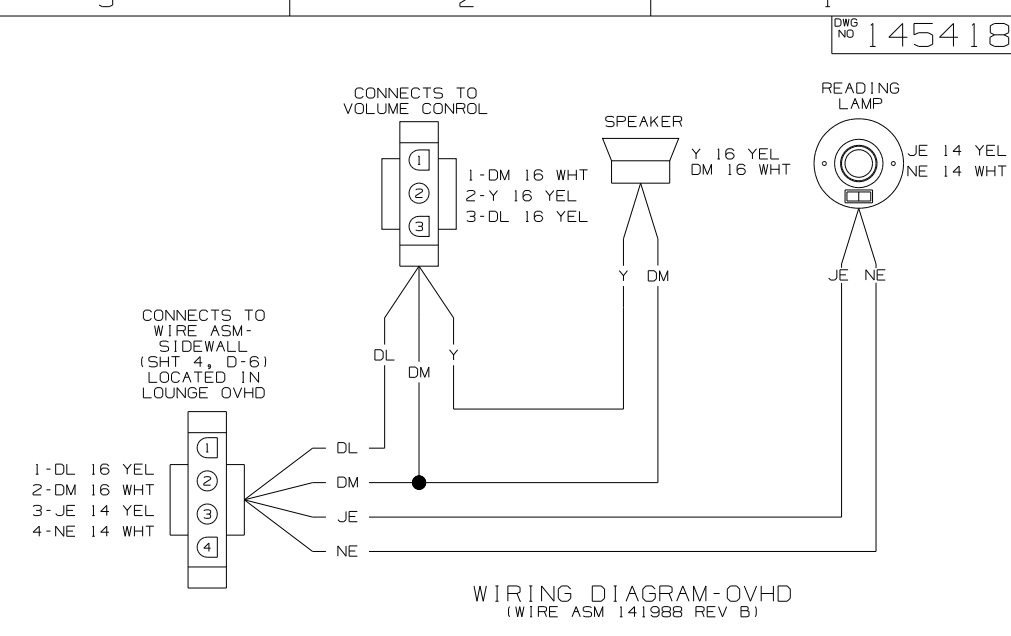


WIRING DIAGRAM-ROOF (WIRE ASM 145850 REV C)

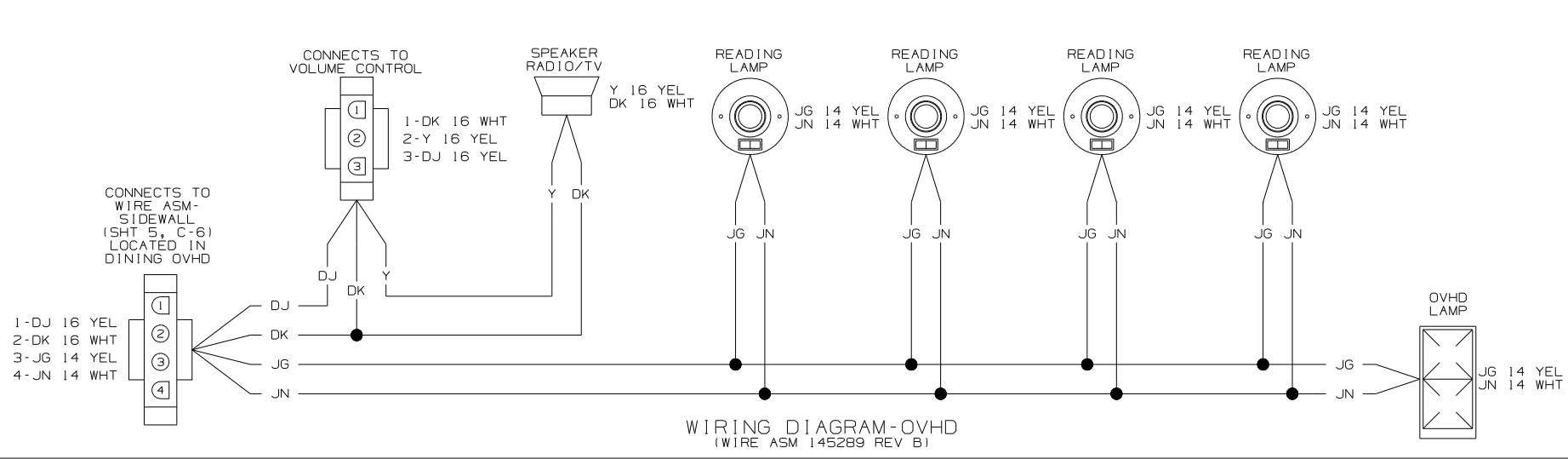
FIRST USED	04 G35U
TITLE	DO NOT SCALE DRAWING
SHEET 3	PART NO 145418
	1 4/21/2004



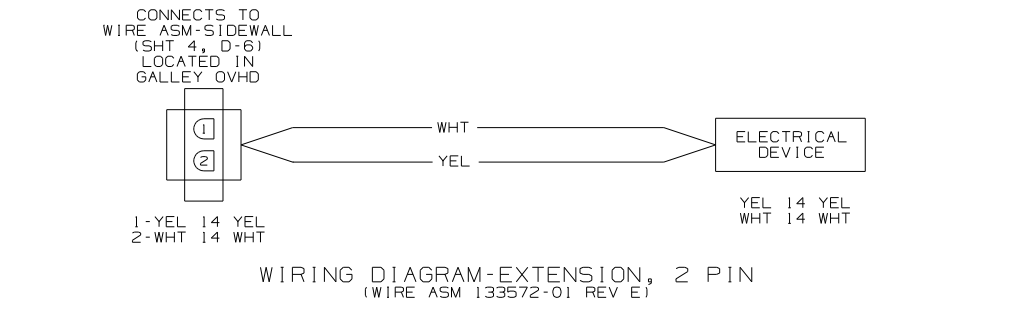
WIRING DIAGRAM SIDEWALL
(WIRE ASM 144663 REV D)



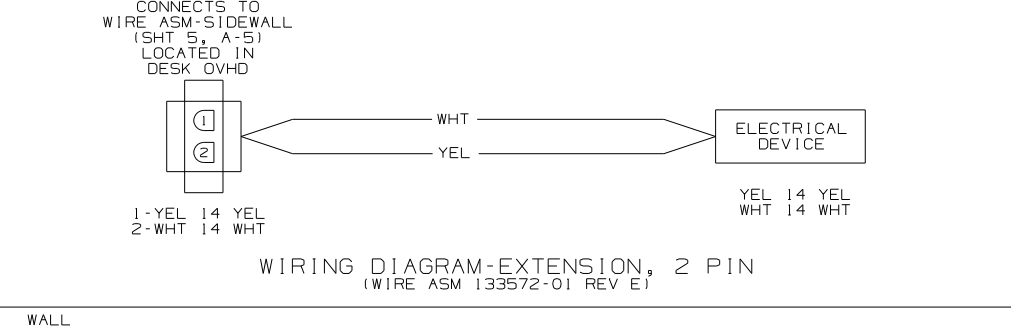
WIRING DIAGRAM-OVHD
(WIRE ASM 141988 REV B)



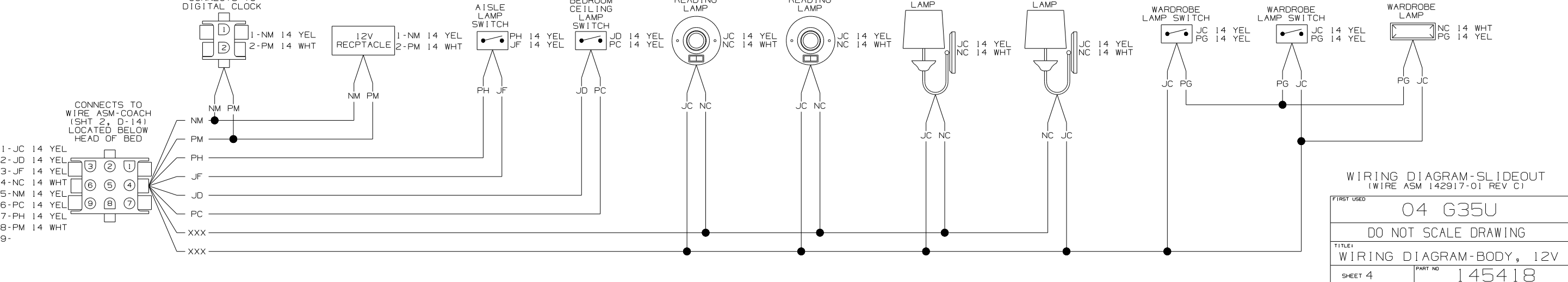
WIRING DIAGRAM-OVHD
(WIRE ASM 145289 REV B)



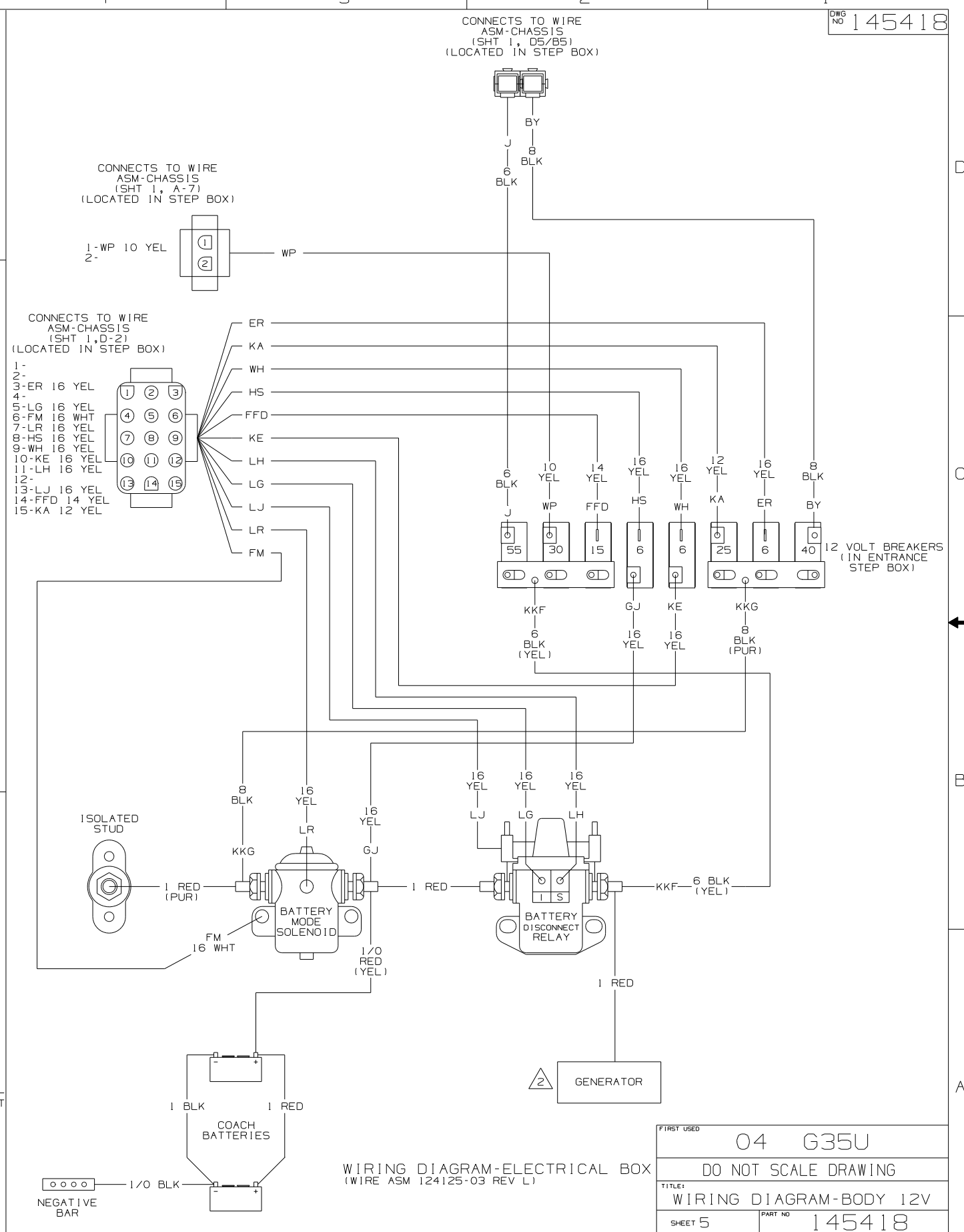
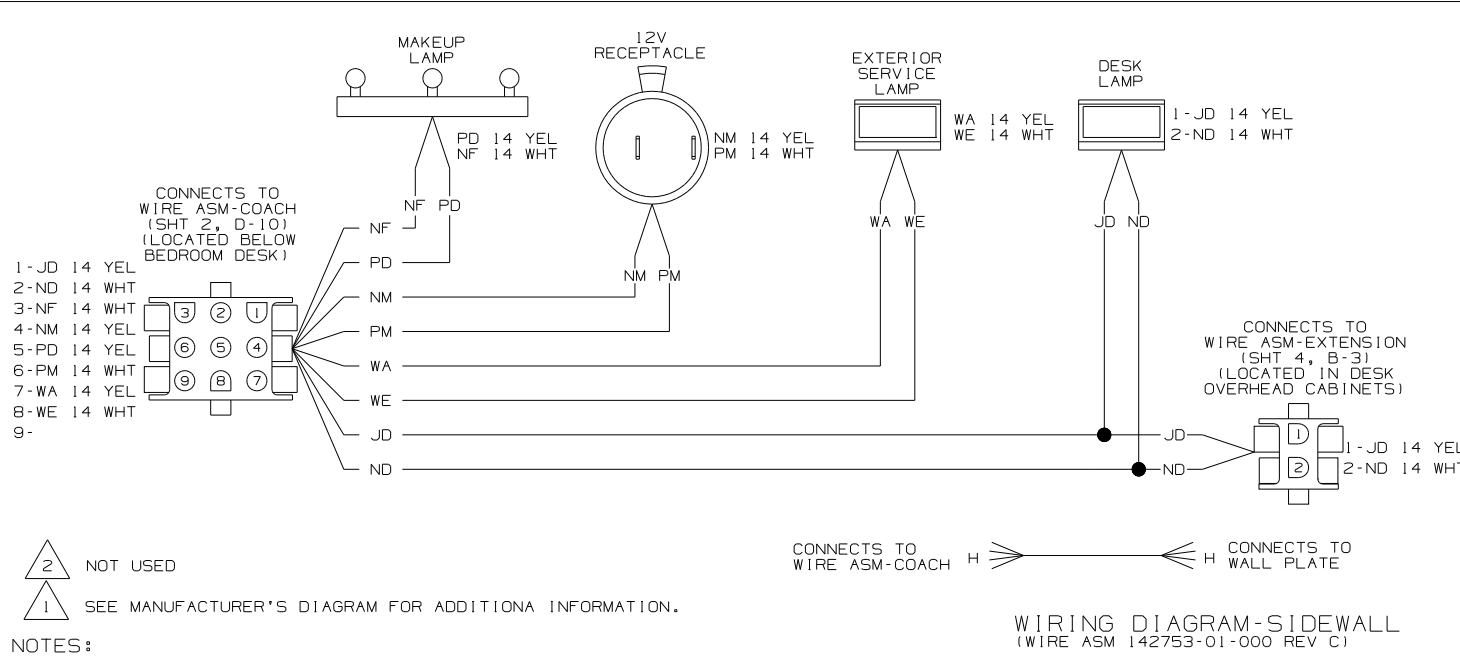
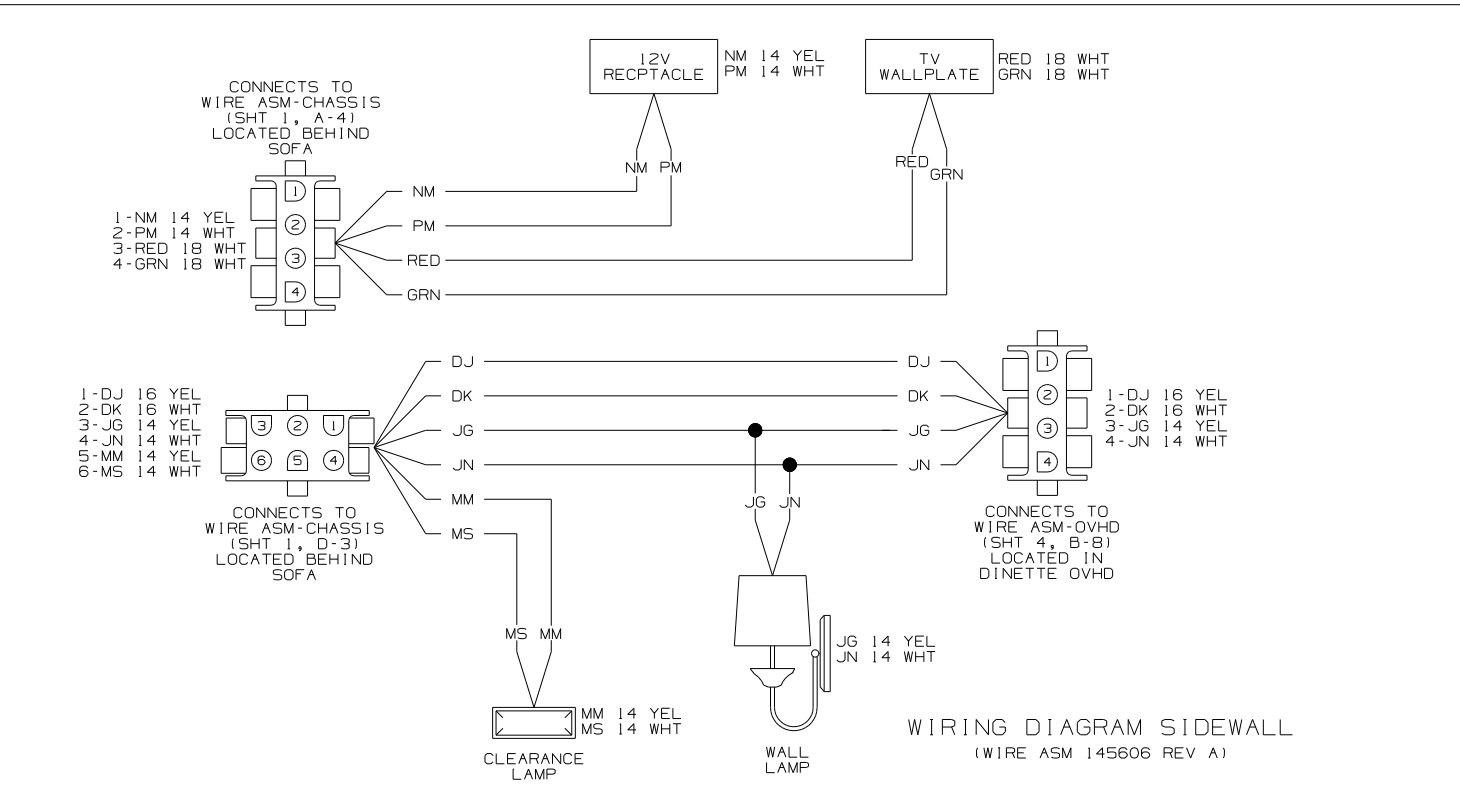
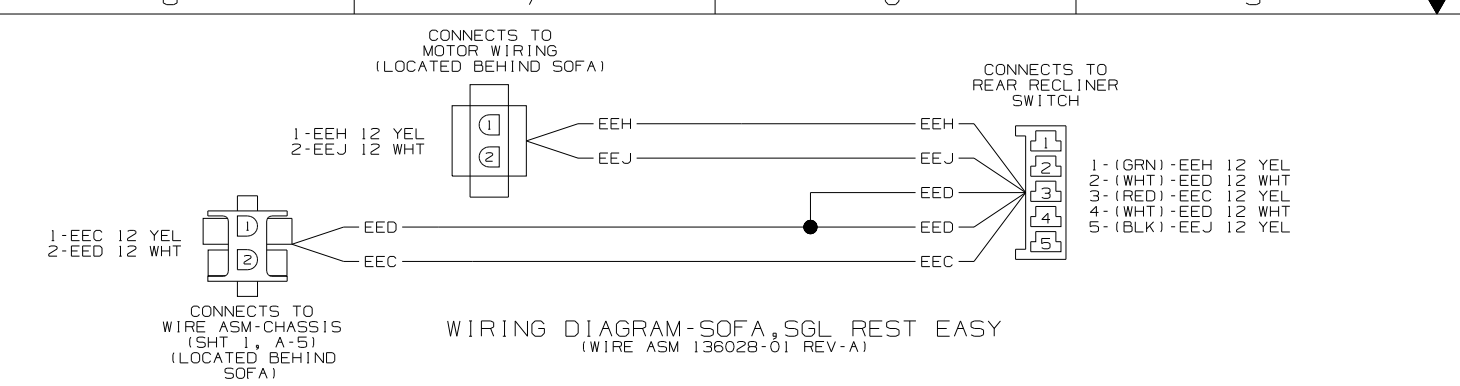
WIRING DIAGRAM-EXTENSION, 2 PIN
(WIRE ASM 133572-01 REV E)



WIRING DIAGRAM-EXTENSION, 2 PIN
(WIRE ASM 133572-01 REV E)



FIRST USED		04 G35U	
DO NOT SCALE DRAWING			
TITLE: WIRING DIAGRAM-BODY, 12V			
SHEET 4	PART NO		145418



NOTES:
 2 NOT USED
 1 SEE MANUFACTURER'S DIAGRAM FOR ADDITIONAL INFORMATION.

FIRST USED	04 G35U
DO NOT SCALE DRAWING	
TITLE	WIRING DIAGRAM-BODY 12V
SHEET 5	PART NO 145418