



DANGER

Danger of electrical shock, burns or death. Always remove all power sources before attempting any repair, service or diagnostic work. Power can be present from shore power, generator, inverter or battery. All power sources must be disabled and secured before performing any service.

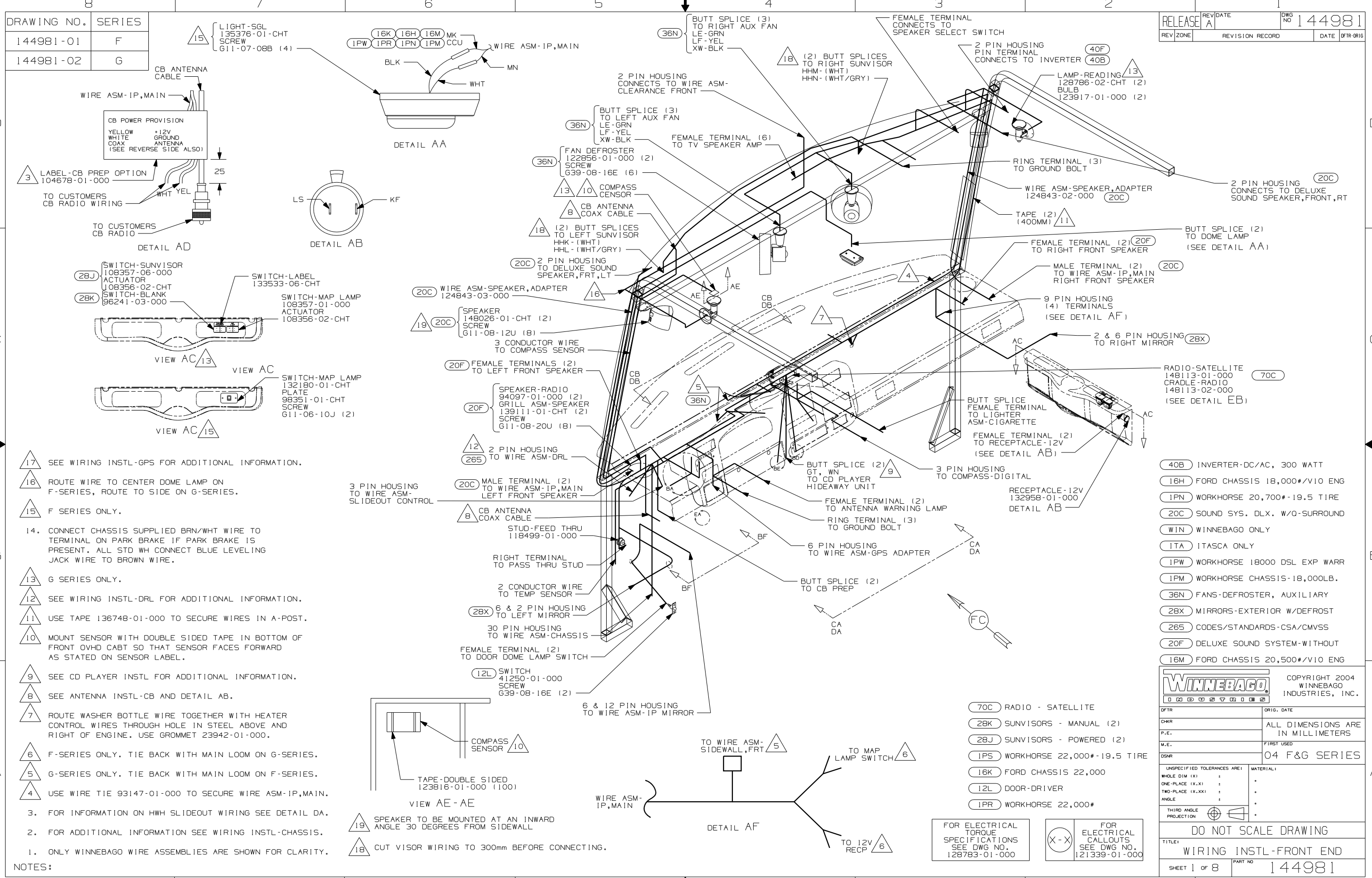


CAUTION

If you lack the skills, tools or equipment to perform diagnostic or repair work leave such work to an authorized Winnebago Industries dealer or other qualified shop.

| DRAWING NO. | SERIES |
|-------------|--------|
| 144981-01 | F |
| 144981-02 | G |

| | | | | |
|-----------|-----------|-----------------|------|-----------------|
| REV. DATE | REV. ZONE | REVISION RECORD | DATE | DWG. NO. 144981 |
|-----------|-----------|-----------------|------|-----------------|



17. SEE WIRING INSTL-GPS FOR ADDITIONAL INFORMATION.
16. ROUTE WIRE TO CENTER DOME LAMP ON F-SERIES, ROUTE TO SIDE ON G-SERIES.
15. F SERIES ONLY.
14. CONNECT CHASSIS SUPPLIED BRN/WHT WIRE TO TERMINAL ON PARK BRAKE IF PARK BRAKE IS PRESENT. ALL STD WH CONNECT BLUE LEVELING JACK WIRE TO BROWN WIRE.
13. G SERIES ONLY.
12. SEE WIRING INSTL-DRL FOR ADDITIONAL INFORMATION.
11. USE TAPE 136748-01-000 TO SECURE WIRES IN A-POST.
10. MOUNT SENSOR WITH DOUBLE SIDED TAPE IN BOTTOM OF FRONT OVHD CABT SO THAT SENSOR FACES FORWARD AS STATED ON SENSOR LABEL.
9. SEE CD PLAYER INSTL FOR ADDITIONAL INFORMATION.
8. SEE ANTENNA INSTL-CB AND DETAIL AB.
7. ROUTE WASHER BOTTLE WIRE TOGETHER WITH HEATER CONTROL WIRES THROUGH HOLE IN STEEL ABOVE AND RIGHT OF ENGINE. USE GROMMET 23942-01-000.
6. F-SERIES ONLY. TIE BACK WITH MAIN LOOM ON G-SERIES.
5. G-SERIES ONLY. TIE BACK WITH MAIN LOOM ON F-SERIES.
4. USE WIRE TIE 93147-01-000 TO SECURE WIRE ASM-IP,MAIN.
3. FOR INFORMATION ON HWH SLIDEOUT WIRING SEE DETAIL DA.
2. FOR ADDITIONAL INFORMATION SEE WIRING INSTL-CHASSIS.
1. ONLY WINNEBAGO WIRE ASSEMBLIES ARE SHOWN FOR CLARITY.

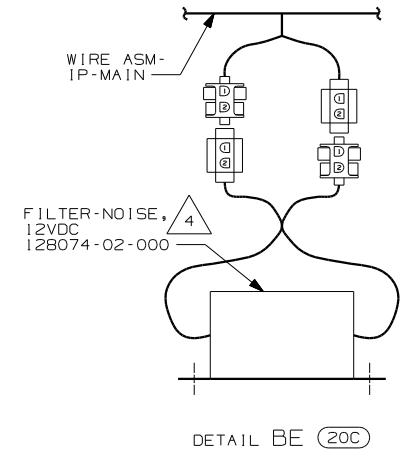
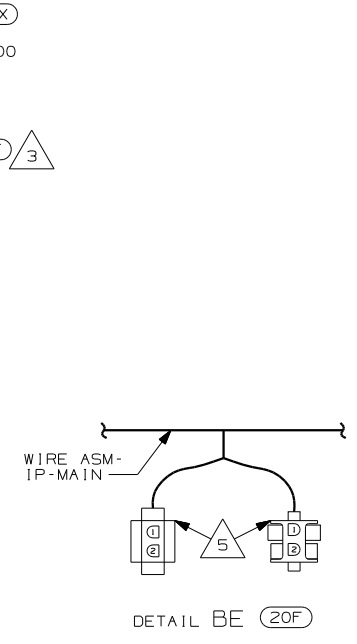
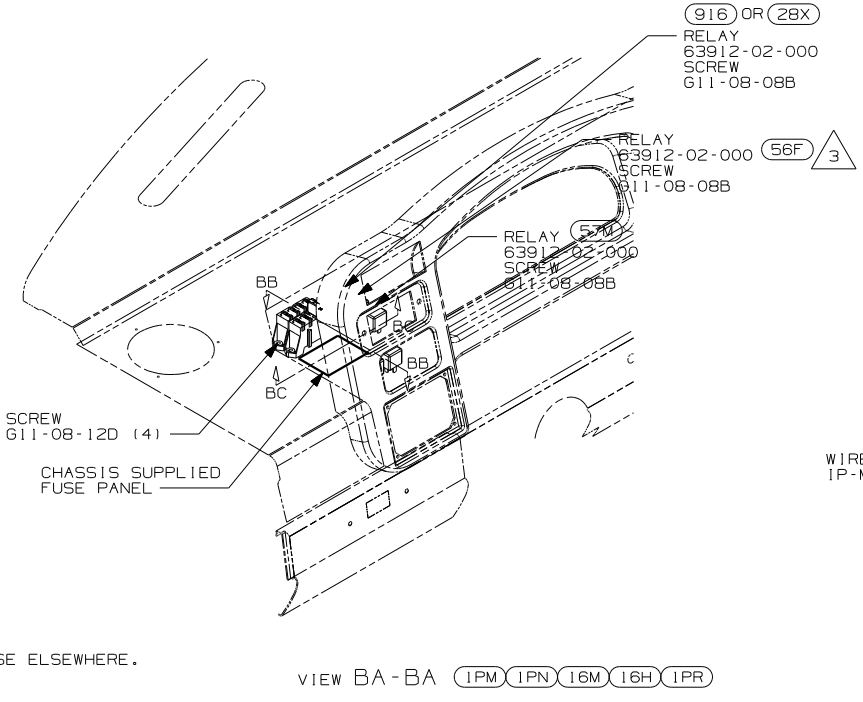
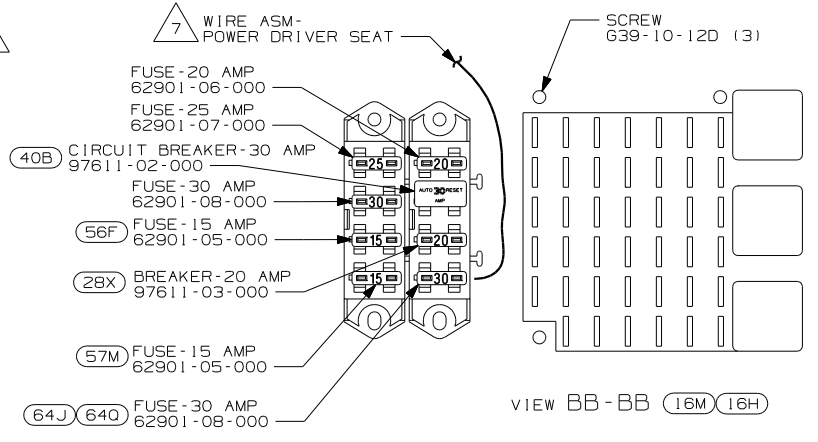
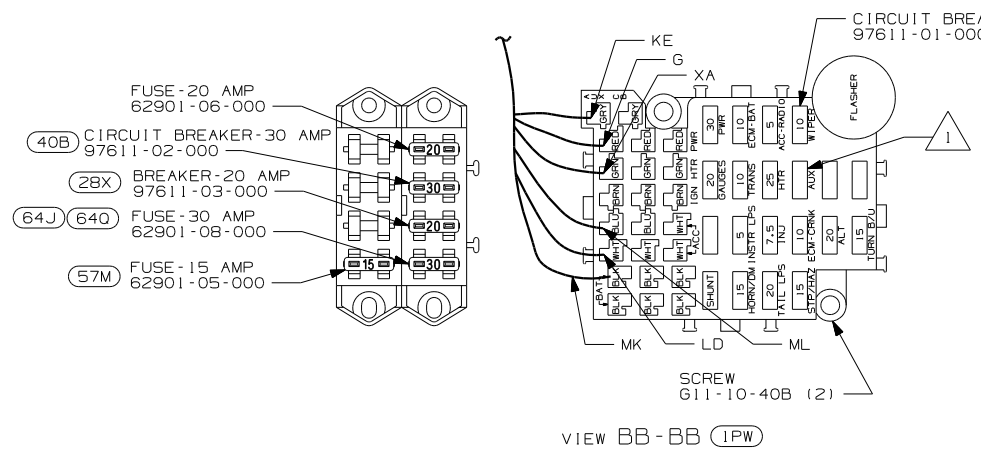
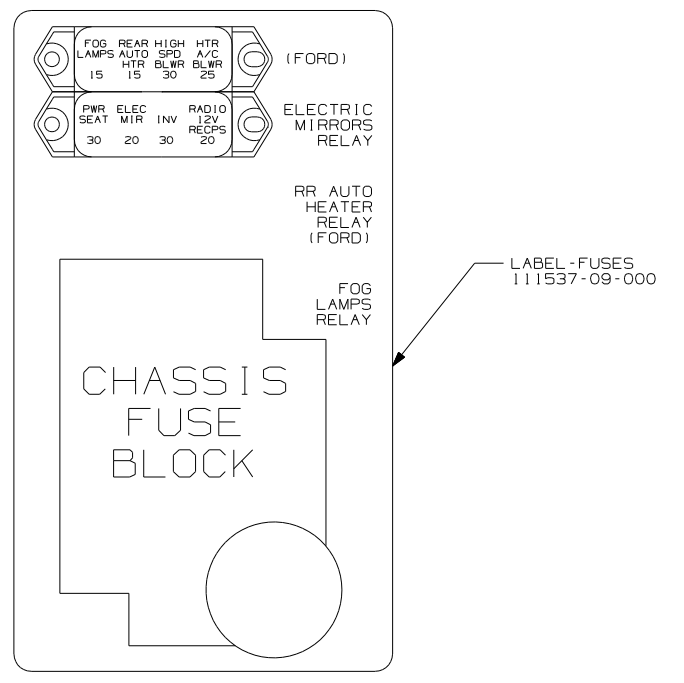
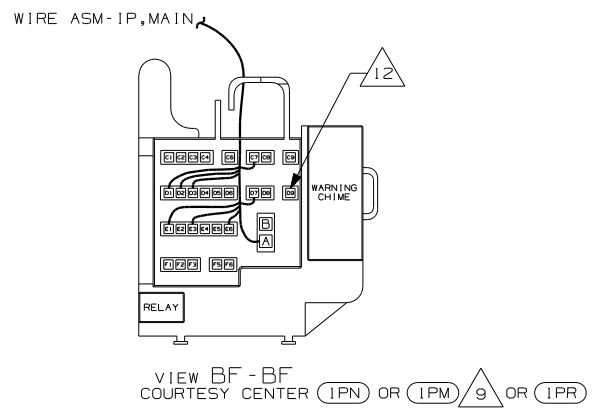
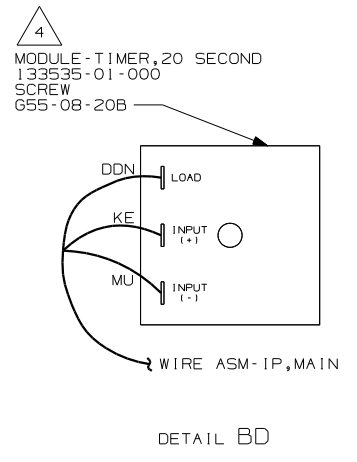
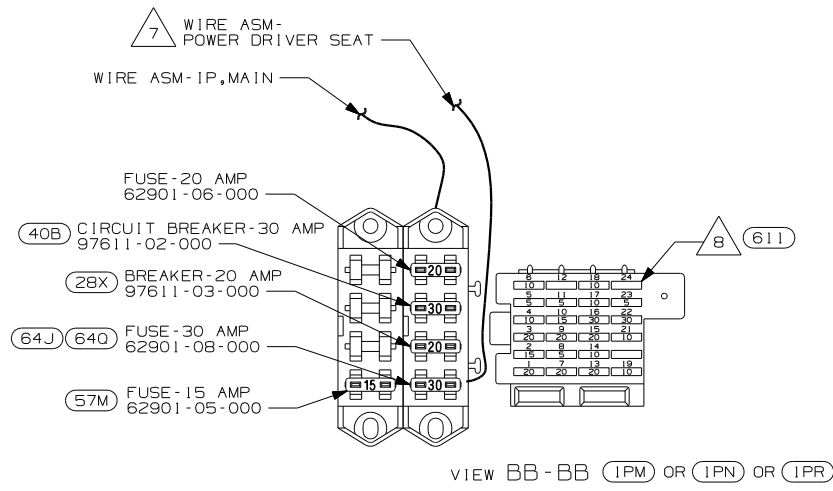
19. SPEAKER TO BE MOUNTED AT AN INWARD ANGLE 30 DEGREES FROM SIDEWALL
18. CUT VISOR WIRING TO 300mm BEFORE CONNECTING.

FOR ELECTRICAL TORQUE SPECIFICATIONS SEE DWG NO. 128783-01-000

FOR ELECTRICAL CALLOUTS SEE DWG NO. 121339-01-000

- 40B INVERTER-DC/AC, 300 WATT
- 16H FORD CHASSIS 18,000#/V10 ENG
- 1PN WORKHORSE 20,700#-19.5 TIRE
- 20C SOUND SYS. DLX. W/O-SURROUND
- WIN WINNEBAGO ONLY
- 1TA ITASCA ONLY
- 1PW WORKHORSE 18000 DSL EXP WARR
- 1PM WORKHORSE CHASSIS-18,000LB.
- 36N FANS-DEFROSTER, AUXILIARY
- 28X MIRRORS-EXTERIOR W/DEFROST
- 265 CODES/STANDARDS-CSA/CMVSS
- 20F DELUXE SOUND SYSTEM-WITHOUT
- 16M FORD CHASSIS 20,500#/V10 ENG

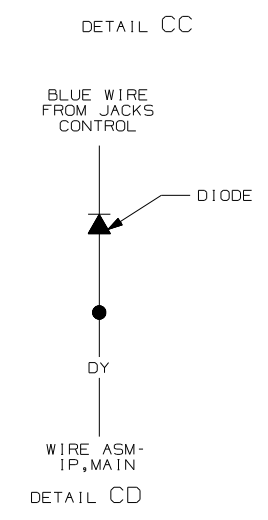
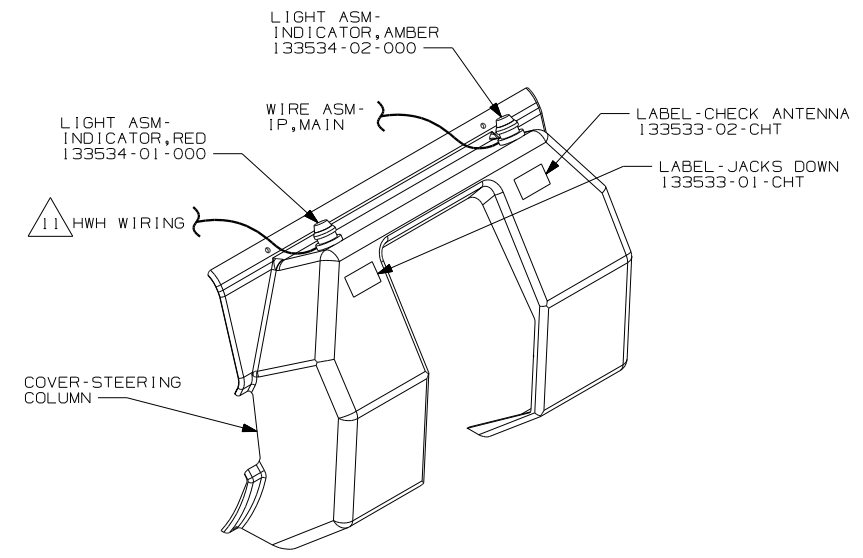
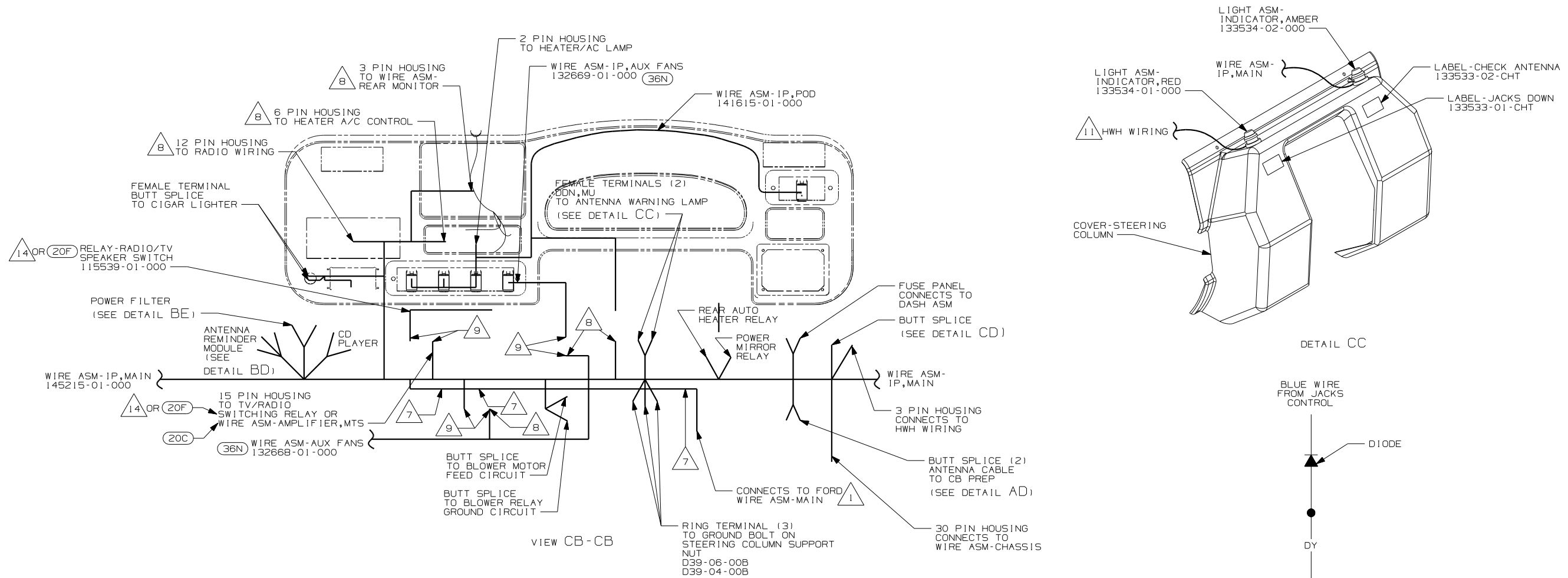
| | | | |
|-------------------------------|------------|---|---|
| WINNEBAGO | | COPYRIGHT 2004 WINNEBAGO INDUSTRIES, INC. | |
| DFT | ORIG. DATE | ALL DIMENSIONS ARE IN MILLIMETERS | |
| CHKR | | FIRST USED | |
| P.E. | | 04 F&G SERIES | |
| M.E. | | UNSPECIFIED TOLERANCES ARE: | |
| DSNR | | MATERIAL: | |
| THIRD ANGLE PROJECTION | | WHOLE DIM (X) | : |
| | | ONE-PLACE (X, X) | : |
| | | TWO-PLACE (X, XX) | : |
| | | ANGLE | : |
| DO NOT SCALE DRAWING | | | |
| TITLE: WIRING INSTL-FRONT END | | | |
| SHEET 1 OF 8 | PART NO. | 144981 | |



- 12 CONNECT CHASSIS SUPPLIED CONNECTOR LABELED "SEAT BELT BYPASS" TO POSITION D9 IN CONVENIENCE CENTER.
- 11 G-SERIES ONLY
- 10 F-SERIES ONLY
- 9 CHASSIS SUPPLIED
- 8 REPLACE 5 AMP FUSE IN #24 WITH AMP FUSE 125986-05-000.
- 7 MOUNT TERMINAL IN FUSE BLOCK.
- 6 NOT USED WITH (16M) & (16H)
- 5 CONNECT HOUSINGS TOGETHER.
- 4 MOUNT ON TOP LEFT REAR CORNER OF PANEL-COVER,RADIATOR.
- 3 NOT USED WITH (1PM)
- 2 REPLACE 30A CIRCUIT BREAKER WITH 15 AMP FUSE AND SAVE FOR USE ELSEWHERE.
- 1 TRIM FUSE BLOCK SO CIRCUIT BREAKER FITS PROPERLY. REPLACE 25 AMP FUSE AND SAVE FOR USE ELSEWHERE.
- NOTES:

- 57M LAMPS-FOG
- 1PW WORKHORSE 18000 DSL EXP WARR
- 1PR WORKHORSE 22,000#
- 16H FORD CHASSIS 18,000#/V10 ENG
- 611 WTR HTR-RR AUTO/MOTORAID
- 1PN WORKHORSE 20,700#-19.5 TIRE
- 20C SOUND SYS. DLX. W/Q-SURROUND
- 40B INVERTER-DC/AC, 300 WATT
- 64J SEAT PED-6-WAY DR/PASS POWER
- 21V SOUND SYSTEM DELUXE
- 20F DELUXE SOUND SYSTEM-WITHOUT
- 16M FORD CHASSIS 20,500#/V10 ENG
- 1PM WORKHORSE CHASSIS-18,000LB.
- 916 MIRRORS-EXTERIOR, EXPORT
- 640 SEAT PED-6-WAY POWER DRIVER
- 56F HEATER-AUXILIARY AUTOMOTIVE
- 28X MIRRORS-EXTERIOR W/DEFROST

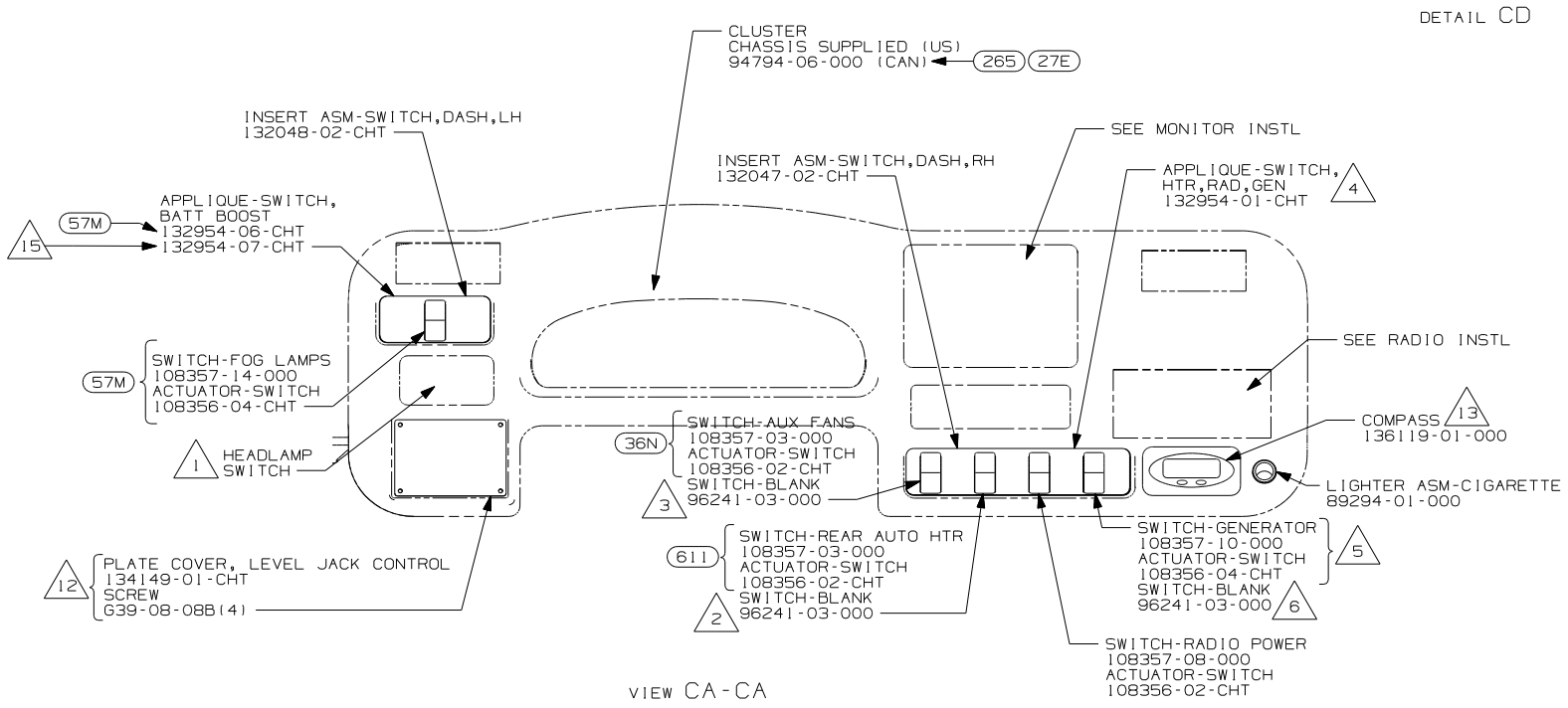
| | |
|----------------------------------|-------------------|
| FIRST USED | |
| 04 F&G SERIES | |
| DO NOT SCALE DRAWING | |
| TITLE: WIRING INSTL-FRONT END | |
| SHEET 2 | PART NO 144981 |



VIEW CB-CB

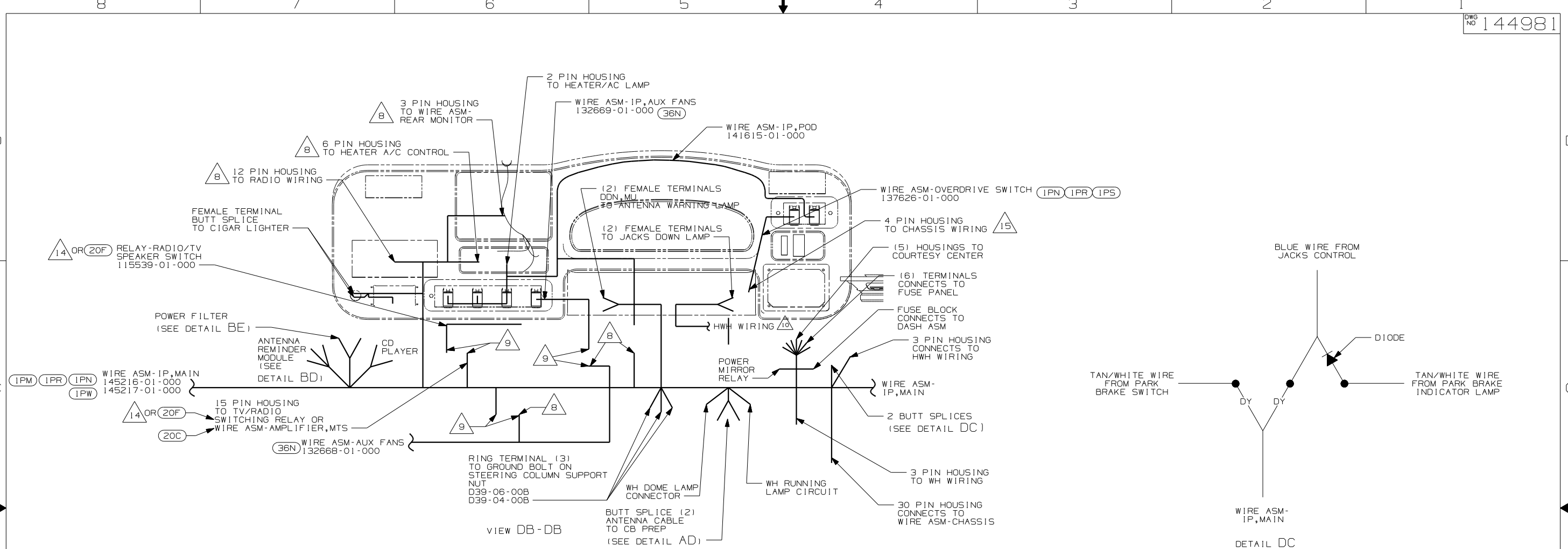
VIEW CA-CA

- NOTES:
- 15 WITHOUT (57M)
 - 14 F-SERIES ONLY
 - 13 G-SERIES ONLY
 - 12 FOR USE WITH (64H)
 - 11 SEE LEVELING SYSTEM INSTL FOR ADDITIONAL INFORMATION.
 - 10 MOUNT ON TOP LEFT REAR CORNER OF PANEL-COVER,RADIATOR.
 - 9 CONNECT HOUSINGS TOGETHER.
 - 8 SECURE IN DASH STEEL.
 - 7 TIE ALONG WIRE ASM-MAIN WITH WIRE TIE 93147-01-000
 - 6 WITHOUT GENERATOR
 - 5 WITH GENERATOR
 - 4 COVER CLEAR LEGEND ON BEZEL WITH FILM 77031-01-000 (W/BLANK) OR 77031-03-000 (W/OPTION).
 - 3 WITHOUT (36N)
 - 2 WITHOUT (611)
 - 1 CHASSIS SUPPLIED

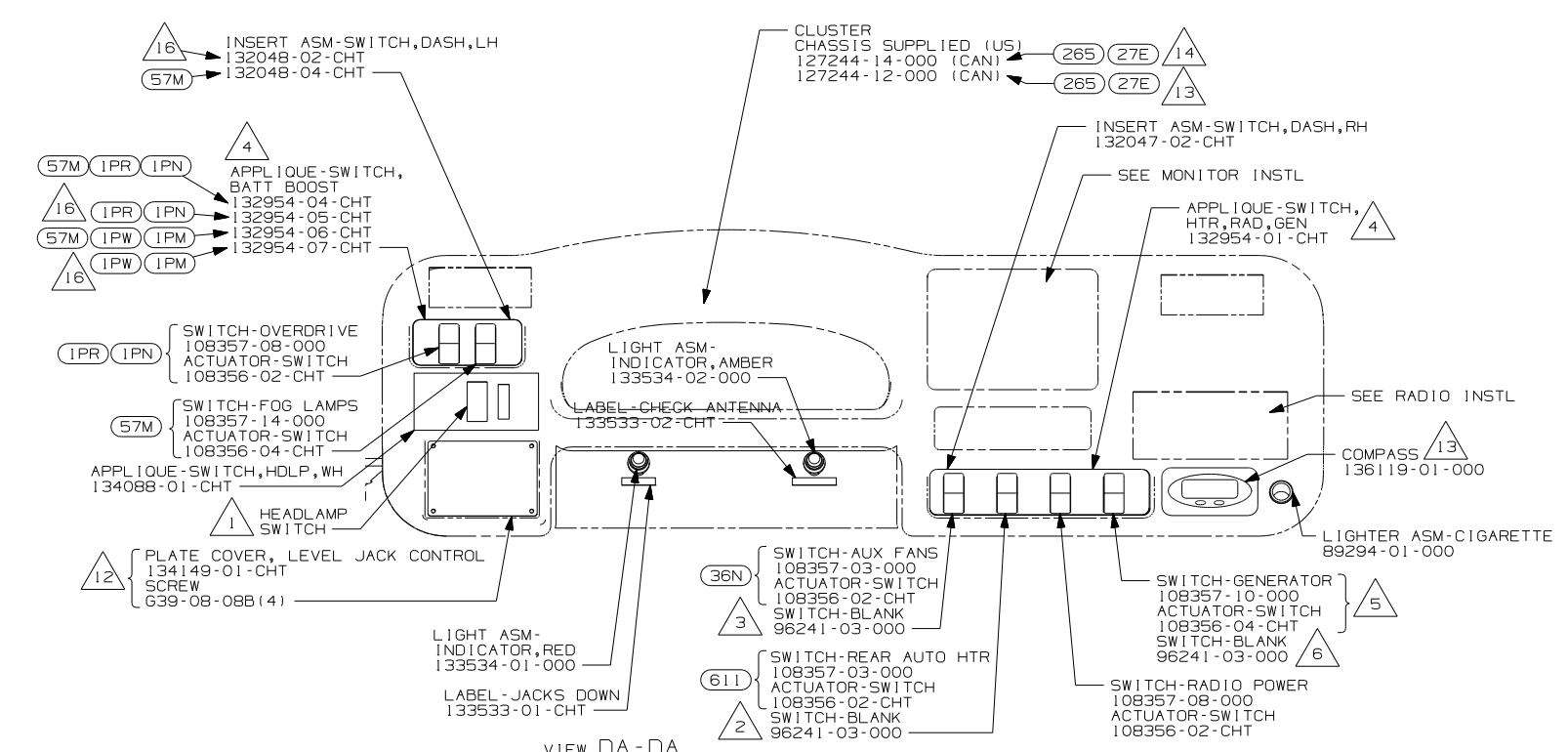


- (57M) LAMPS-FOG
- (16K) FORD CHASSIS 22,000
- (16H) FORD CHASSIS 18,000#/V10 ENG
- (265) CODES/STANDARDS-CSA/CMVSS
- (20C) SOUND SYS. DLX. W/O-SURROUND
- (WIN) WINNEBAGO ONLY
- (ITA) ITASCA ONLY
- (64H) HYDRAULIC LEVELING JACKS
- (16M) FORD CHASSIS 20,500#/V10 ENG
- (611) WTR HTR-RR AUTO/MOTORAID
- (36N) FANS-DEFROSTER, AUXILIARY
- (27E) CODES/STANDARDS-CMVSS
- (20F) DELUXE SOUND SYSTEM-WITHOUT

| | |
|-------------------------------|----------------|
| FIRST USED | |
| 04 F&G SERIES | |
| DO NOT SCALE DRAWING | |
| TITLE: WIRING INSTL-FRONT END | |
| SHEET 3 | PART NO 144981 |

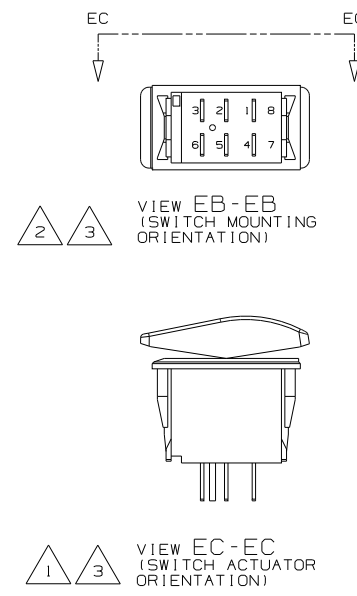
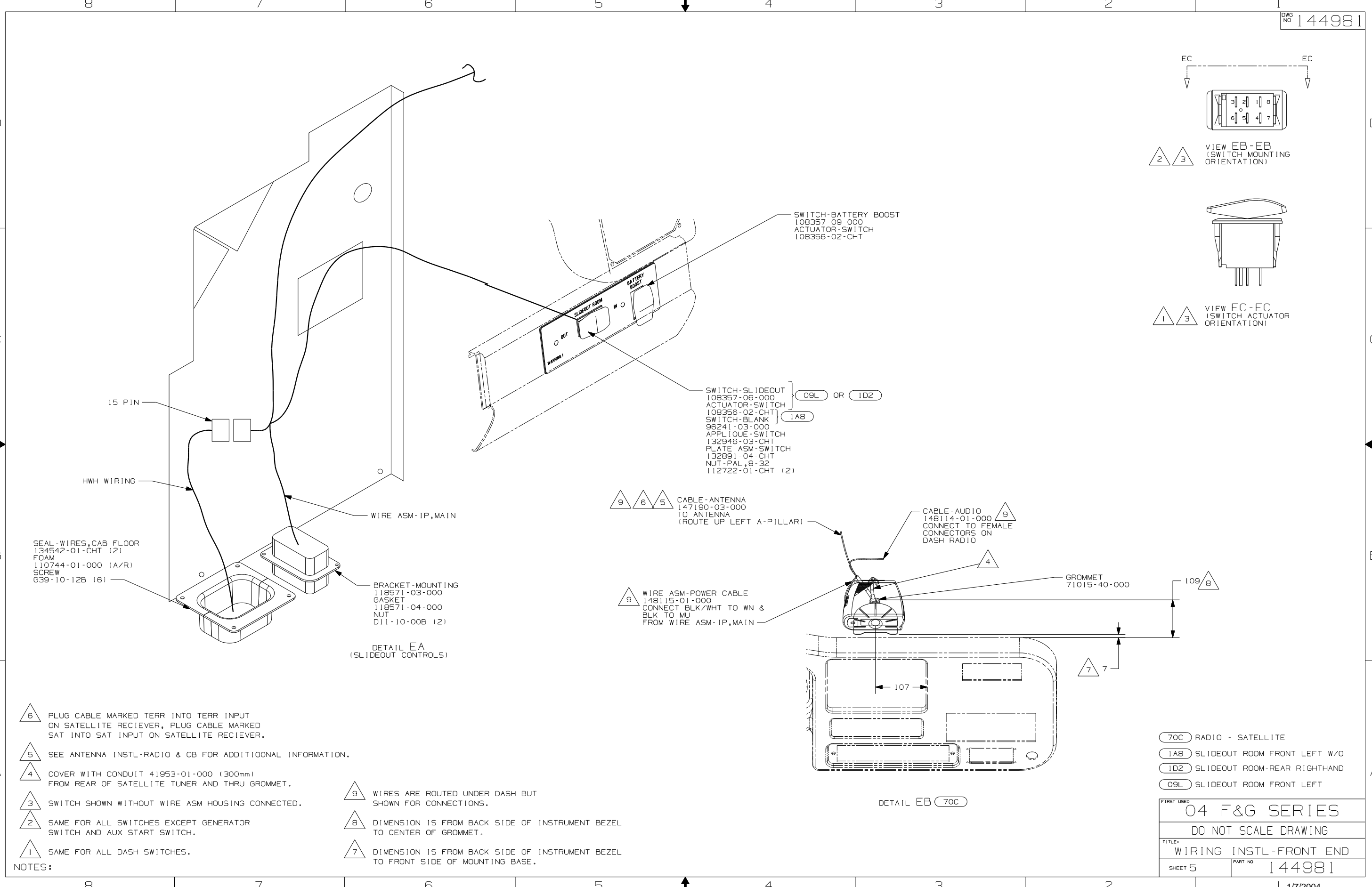


- NOTES:
- 16 WITHOUT (57M)
 - 15 SEND CHASSIS SUPPLIED LOOM TO WIRE PREP FOR MODIFICATIONS AS NOTED IN WIRE ASM-OVERDRIVE SWITCH.
 - 14 F-SERIES ONLY
 - 13 G-SERIES ONLY
 - 12 FOR USE WITH SHELLS WITHOUT (64H)
 - 11 MOUNT ON TOP LEFT REAR CORNER OF PANEL-COVER, RADIATOR.
 - 10 SEE LEVELING SYSTEM INSTL FOR ADDITIONAL INFORMATION.
 - 9 CONNECT HOUSINGS TOGETHER.
 - 8 SECURE IN DASH STEEL.
 - 7 TIE ALONG WIRE ASM-MAIN WITH WIRE TIE 93147-01-000.
 - 6 WITHOUT GENERATOR
 - 5 WITH GENERATOR
 - 4 COVER CLEAR LEGEND ON BEZEL WITH FILM 77031-01-000 (W/BLANK) OR 77031-03-000 (W/OPTION).
 - 3 WITHOUT (36N)
 - 2 WITHOUT (611)
 - 1 CHASSIS SUPPLIED



- (IPS) WORKHORSE 22,000#-22.5 TIRE
- (IPW) WORKHORSE 18000 DSL EXP WARR
- (57M) LAMPS-FOG
- (IPR) WORKHORSE 22,000#
- (27E) CODES/STANDARDS-CMVSS
- (265) CODES/STANDARDS-CSA/CMVSS
- (64H) HYDRAULIC LEVELING JACKS
- (20C) SOUND SYS. DLX. W/O-SURROUND
- (IPM) WORKHORSE CHASSIS-18,000LB.
- (611) WTR HTR-RR AUTO/MOTORAID
- (36N) FANS-DEFROSTER, AUXILIARY
- (IPN) WORKHORSE 20,700#-19.5 TIRE
- (20F) DELUXE SOUND SYSTEM-WITHOUT

| | |
|-------------------------------|----------------|
| FIRST USED | |
| 04 F&G SERIES | |
| DO NOT SCALE DRAWING | |
| TITLE: WIRING INSTL-FRONT END | |
| SHEET 4 | PART NO 144981 |



SWITCH-BATTERY BOOST
108357-09-000
ACTUATOR-SWITCH
108356-02-CHT

SWITCH-SLIDEOUT
108357-06-000
ACTUATOR-SWITCH
108356-02-CHT
SWITCH-BLANK } 1A8
96241-03-000
APPLIQUE-SWITCH
132946-03-CHT
PLATE ASM-SWITCH
132891-04-CHT
NUT-PAL,8-32
112722-01-CHT (2)

9 6 5 CABLE-ANTENNA
147190-03-000
TO ANTENNA
(ROUTE UP LEFT A-PILLAR)

9 CABLE-AUDIO
148114-01-000
CONNECT TO FEMALE
CONNECTORS ON
DASH RADIO

9 WIRE ASM-POWER CABLE
148115-01-000
CONNECT BLK/WHT TO WN &
BLK TO MU
FROM WIRE ASM-IP,MAIN

SEAL-WIRES,CAB FLOOR
134542-01-CHT (2)
FOAM
110744-01-000 (A/R)
SCREW
639-10-12B (6)

BRACKET-MOUNTING
118571-03-000
GASKET
118571-04-000
NUT
D11-10-00B (2)

DETAIL EA
(SLIDEOUT CONTROLS)

DETAIL EB (70C)

- (70C) RADIO - SATELLITE
- (1A8) SLIDEOUT ROOM FRONT LEFT W/O
- (1D2) SLIDEOUT ROOM-REAR RIGHTHAND
- (09L) SLIDEOUT ROOM FRONT LEFT

6 PLUG CABLE MARKED TERR INTO TERR INPUT
ON SATELLITE RECIEVER, PLUG CABLE MARKED
SAT INTO SAT INPUT ON SATELLITE RECIEVER.

5 SEE ANTENNA INSTL-RADIO & CB FOR ADDITIOONAL INFORMATION.

4 COVER WITH CONDUIT 41953-01-000 (300mm)
FROM REAR OF SATELLITE TUNER AND THRU GROMMET.

3 SWITCH SHOWN WITHOUT WIRE ASM HOUSING CONNECTED.

2 SAME FOR ALL SWITCHES EXCEPT GENERATOR
SWITCH AND AUX START SWITCH.

1 SAME FOR ALL DASH SWITCHES.

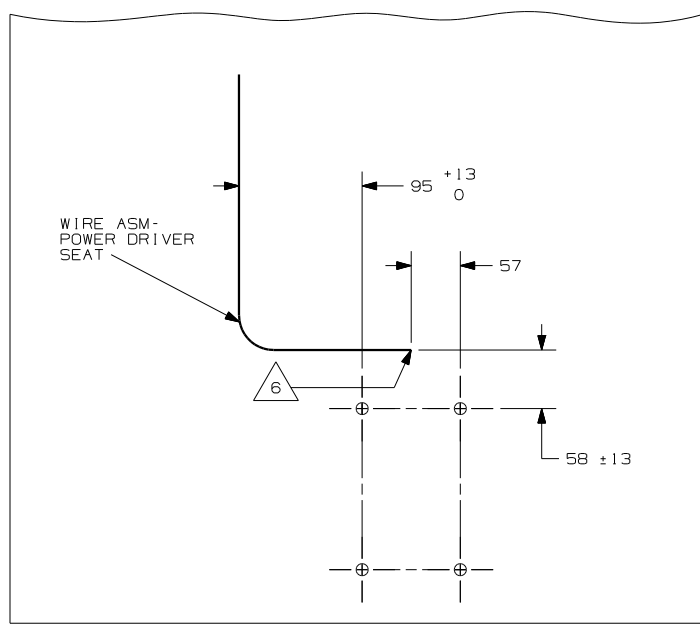
9 WIRES ARE ROUTED UNDER DASH BUT
SHOWN FOR CONNECTIONS.

8 DIMENSION IS FROM BACK SIDE OF INSTRUMENT BEZEL
TO CENTER OF GROMMET.

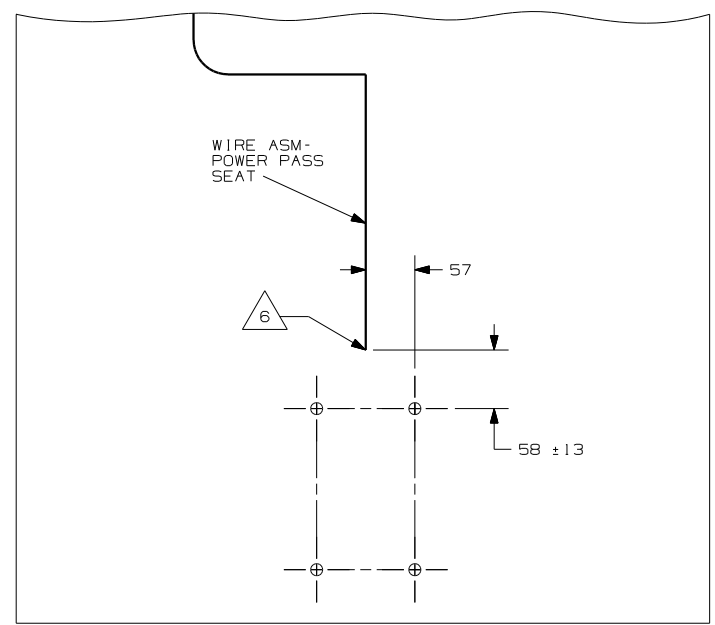
7 DIMENSION IS FROM BACK SIDE OF INSTRUMENT BEZEL
TO FRONT SIDE OF MOUNTING BASE.

NOTES:

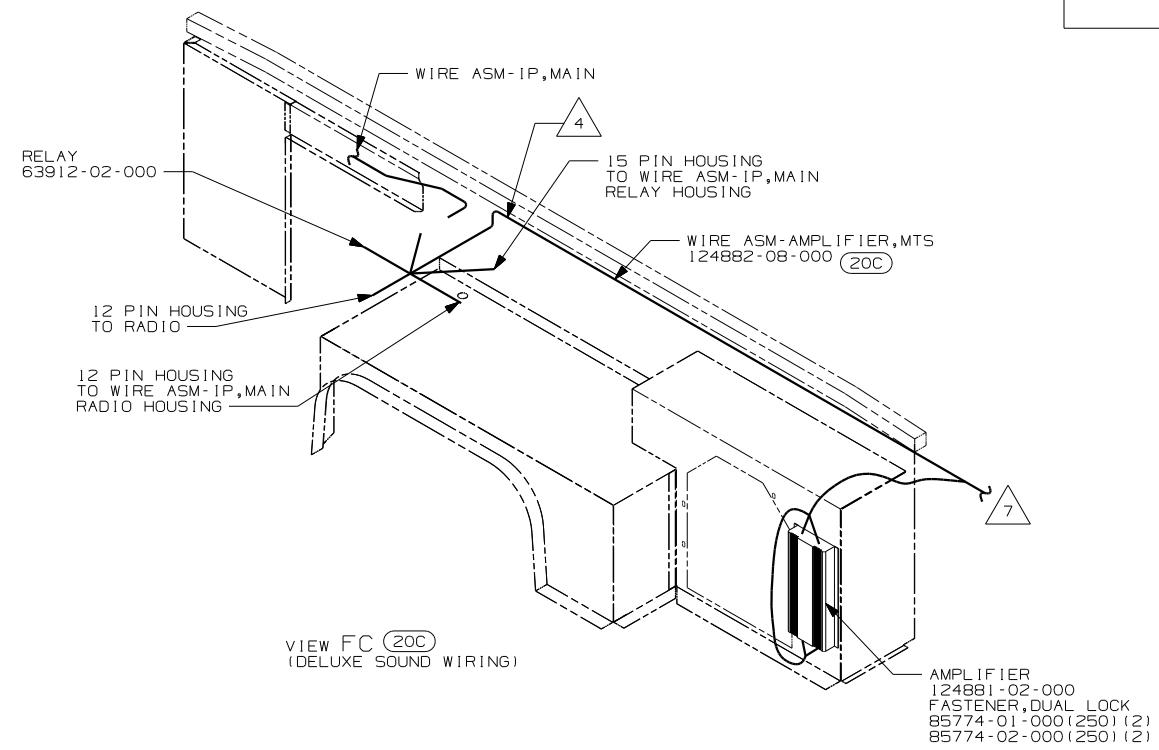
| | |
|----------------------------------|-------------------|
| FIRST USED | |
| 04 F&G SERIES | |
| DO NOT SCALE DRAWING | |
| TITLE: WIRING INSTL-FRONT END | |
| SHEET 5 | PART NO 144981 |



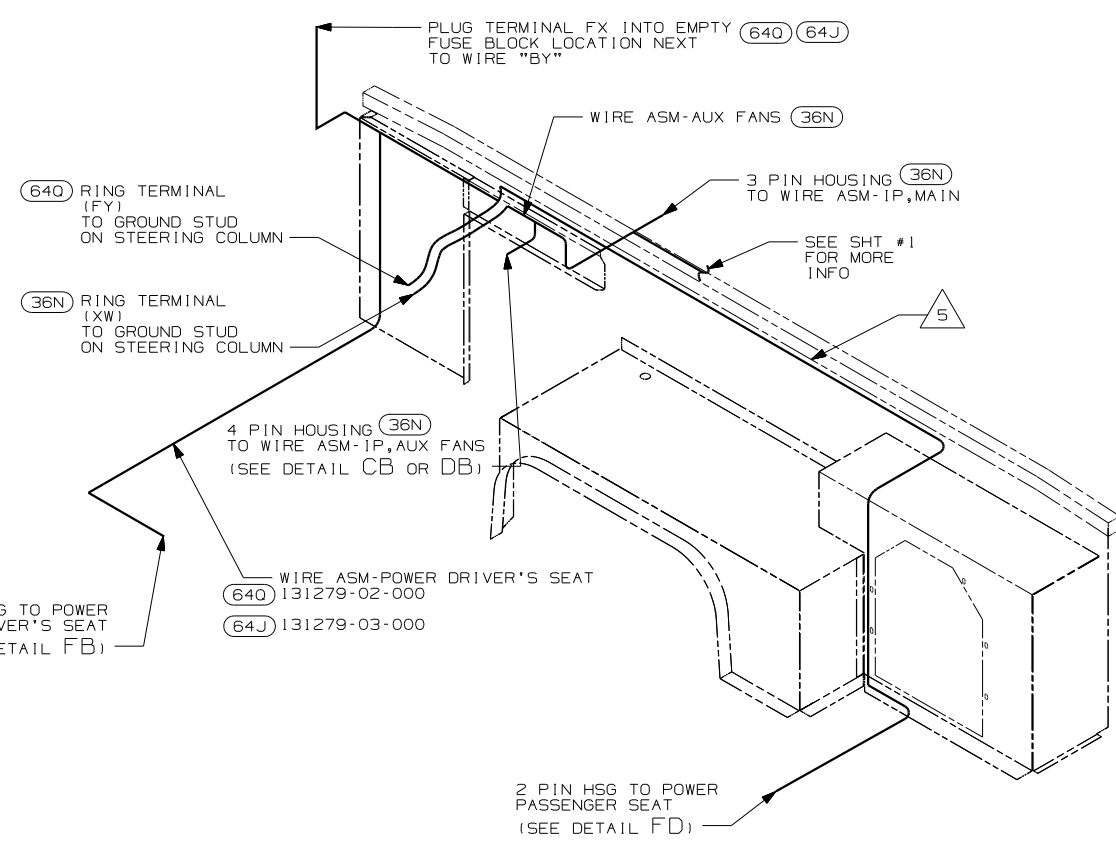
DETAIL FB (640)



DETAIL FD (64J)



VIEW FC (20C)
(DELUXE SOUND WIRING)

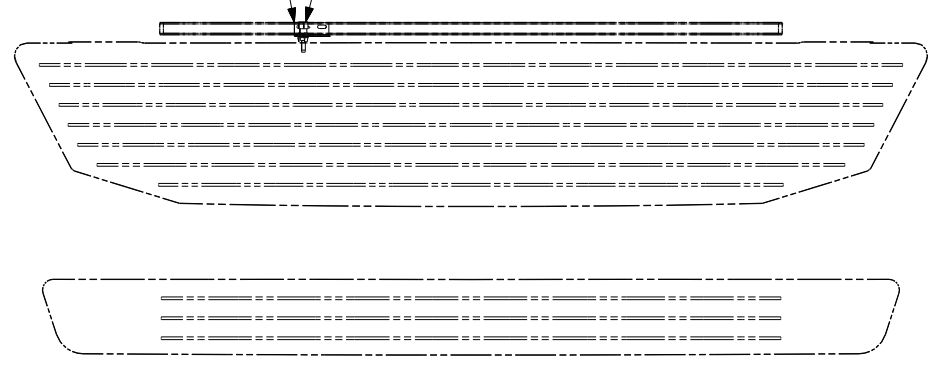
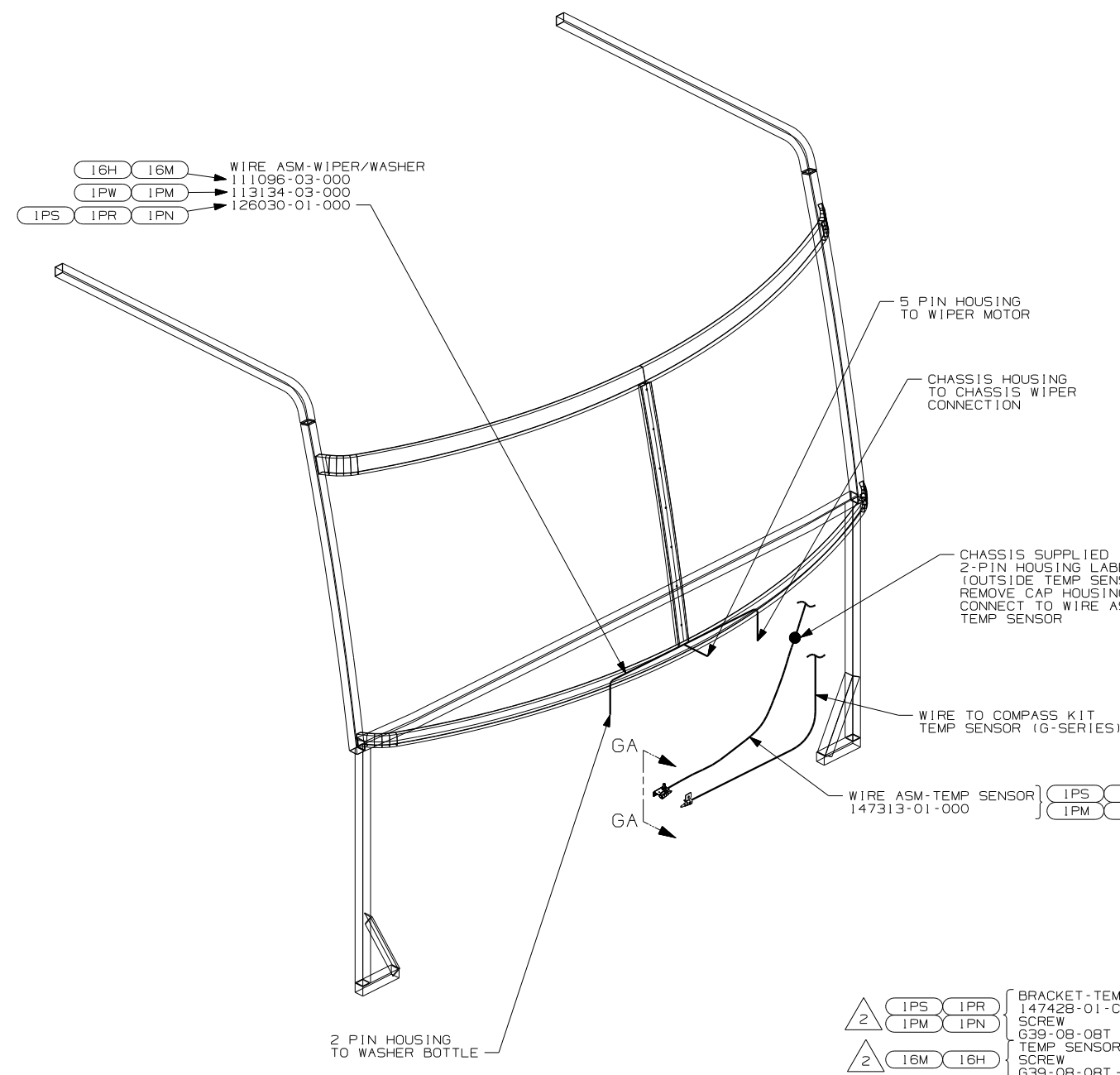


VIEW FC (36N) (640)
(AUXILIARY WIRING)

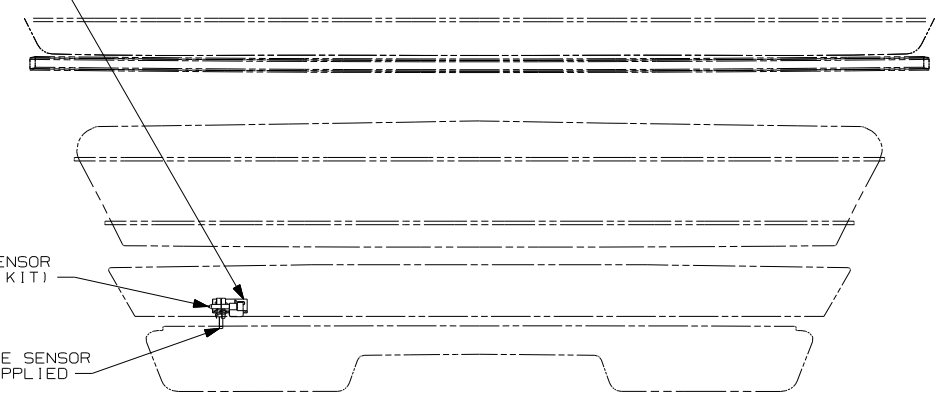
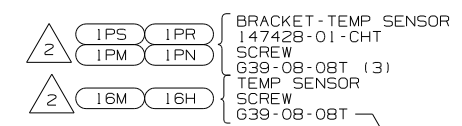
- NOTES:
- 8 PLUG RCA CABLES INTO PORTS LABELED STEREO TV.
 - 7 ROUTE RCA CABLE AND TWO PIN HOUSING UP RIGHT A-PILLAR TO TV AND CENTER CHANNEL SPACER.
 - 6 LEAVE 675, ±50MM OF WIRE AT PEDESTAL.
 - 5 ROUTING WITH (64J) ONLY.
 - 4 ROUTE WITH WIRE ASM-IP, MAIN
 - 3 EDGE OF LABEL TO HANG JUST BELOW BOTTOM OF DASH
 - 2 USE ON SHELL W/GENERATOR.
 - 1 USE WITH SHELLS ONLY.

- (640) SEAT PED-6-WAY POWER DRIVER
- (40J) CB RADIO PREP
- (36N) FANS-DEFROSTER, AUXILIARY
- (64J) SEAT PED-6-WAY DR/PASS POWER
- (20C) SOUND SYS. DLX. W/O-SURROUND

| | |
|------------------------|----------------|
| FIRST USED | |
| 04 F&G SERIES | |
| DO NOT SCALE DRAWING | |
| TITLE: | |
| WIRING INSTL-FRONT END | |
| SHEET 6 | PART NO 144981 |



VIEW GA-GA (F-SERIES)



VIEW GA-GA (G-SERIES)

- (WIN) WINNEBAGO ONLY
- (1PS) WORKHORSE 22,000#-22.5 TIRE
- (1PR) WORKHORSE 22,000#-19.5 TIRE
- (16H) FORD CHASSIS 18,000#/V10 ENG
- (1PN) WORKHORSE 20,700#
- (16M) FORD CHASSIS 20,500#/V10 ENG
- (1PM) WORKHORSE CHASSIS-18,000LB.

2 MOUNT SENSOR OR SENSOR BRACKET TO HORIZONTAL TUBE ON FIBERGLASS AS SHOWN.

1. GATHER ALL EXCESS WIRE AFTER MAKING ALL CONNECTIONS AND BUNDLE AND SECURE WITH TIE-WIRE 8343-01-000 OR 93147-01-000.

NOTES:

| | |
|------------------------|----------------|
| (WIN) | |
| FIRST USED | |
| 04 F&G SERIES | |
| DO NOT SCALE DRAWING | |
| TITLE: | |
| WIRING INSTL-FRONT END | |
| SHEET 7 | PART NO 144981 |

- 16H 16M WIRE ASM-WIPER/WASHER
- 111096-03-000
- 1PW 1PM 113134-03-000
- 1PS 1PR 1PN 126030-01-000

- 2 [1PS 1PR] BRACKET-TEMP SENSOR
- [1PM 1PN] 147428-01-CHT
- SCREW
- G39-08-08T (2)

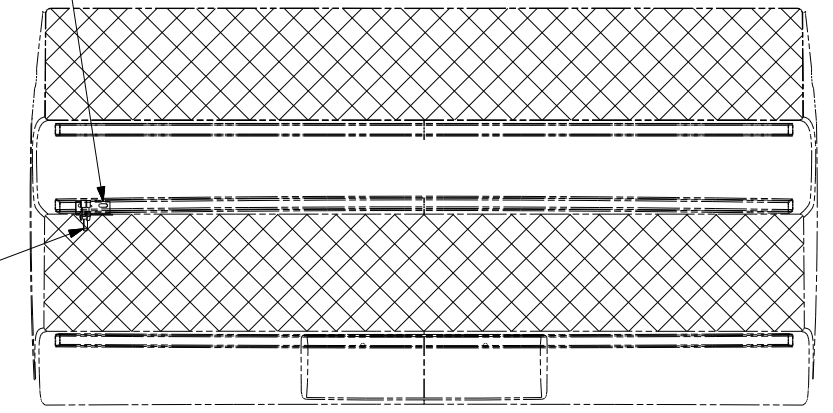
- [1PS 1PR] TEMPERATURE SENSOR
- [1PM 1PN] CHASSIS SUPPLIED

- [1PS 1PR]
- [1PM 1PN]

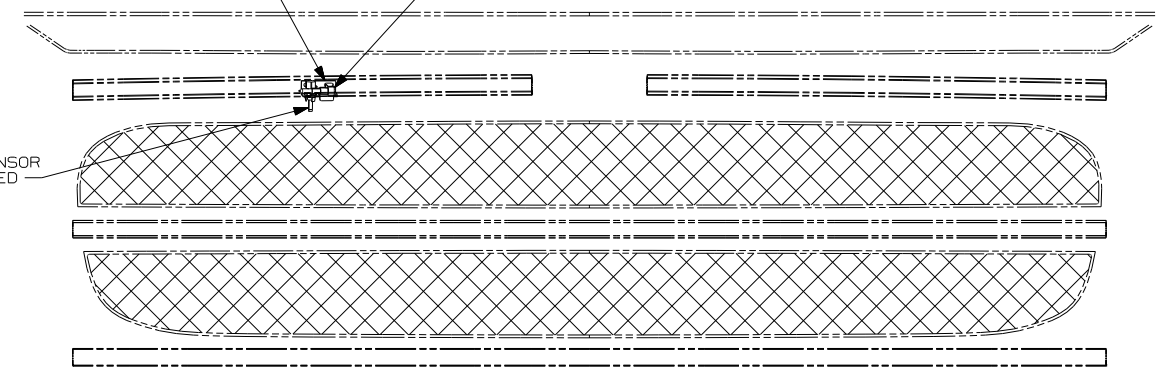
- [1PS 1PR]
- [1PM 1PN]

- 2 [1PS 1PR] BRACKET-TEMP SENSOR
- [1PM 1PN] 147428-01-CHT
- SCREW
- G39-08-08T (3)
- 2 [16M 16H] TEMP SENSOR
- [16M 16H] SCREW
- G39-08-08T

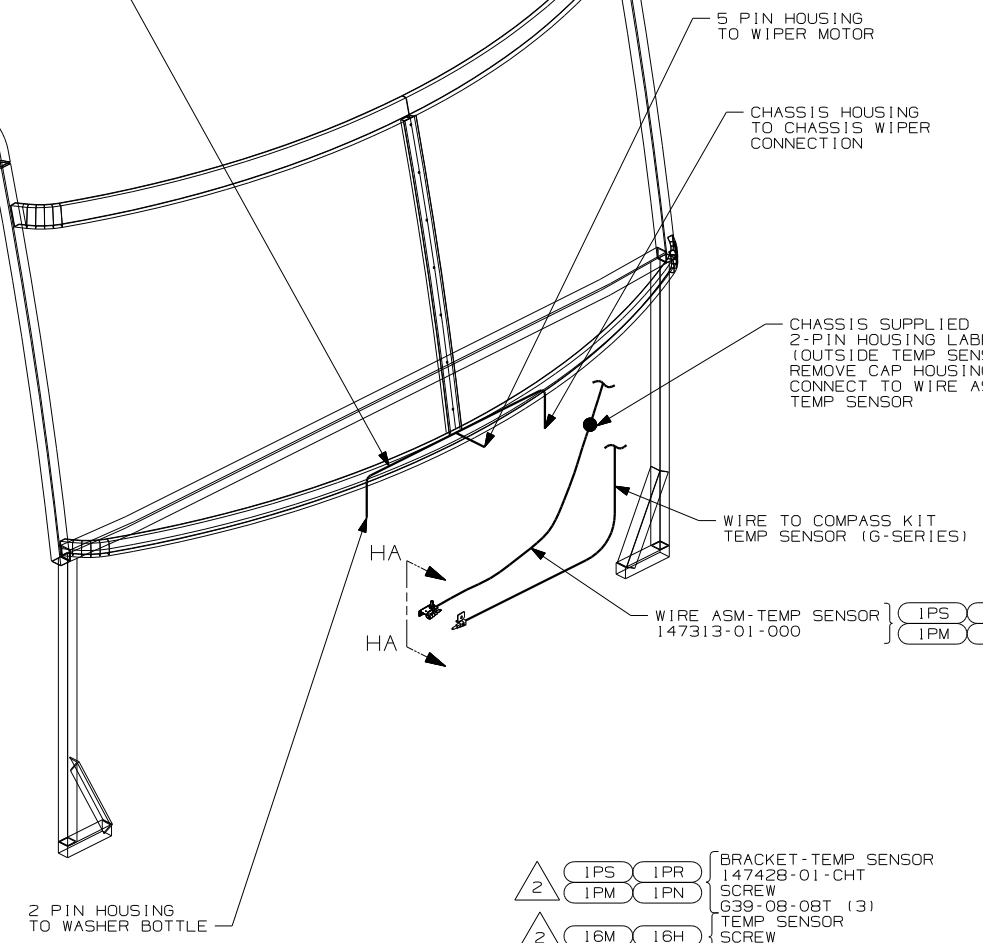
- [1PS 1PR] TEMPERATURE SENSOR
- [1PM 1PN] CHASSIS SUPPLIED



VIEW HA-HA (F-SERIES)



VIEW HA-HA (G-SERIES)



2 MOUNT SENSOR OR SENSOR BRACKET TO HORIZONTAL TUBE ON FIBERGLASS AS SHOWN.

1. GATHER ALL EXCESS WIRE AFTER MAKING ALL CONNECTIONS AND BUNDLE AND SECURE WITH TIE-WIRE 8343-01-000 OR 93147-01-000.

NOTES:

- [1TA] ITASCA ONLY
- [1PS] WORKHORSE 22,000#-22.5 TIRE
- [1PR] WORKHORSE 22,000#-19.5 TIRE
- [16H] FORD CHASSIS 18,000#/V10 ENG
- [1PN] WORKHORSE 20,700#-19.5 TIRE
- [1PM] WORKHORSE CHASSIS-18,000LB.
- [16M] FORD CHASSIS 20,500#/V10 ENG

| | |
|------------------------|---------|
| [1TA] | |
| FIRST USED | |
| 04 F&G SERIES | |
| DO NOT SCALE DRAWING | |
| TITLE: | |
| WIRING INSTL-FRONT END | |
| SHEET 8 | PART NO |
| | 144981 |