



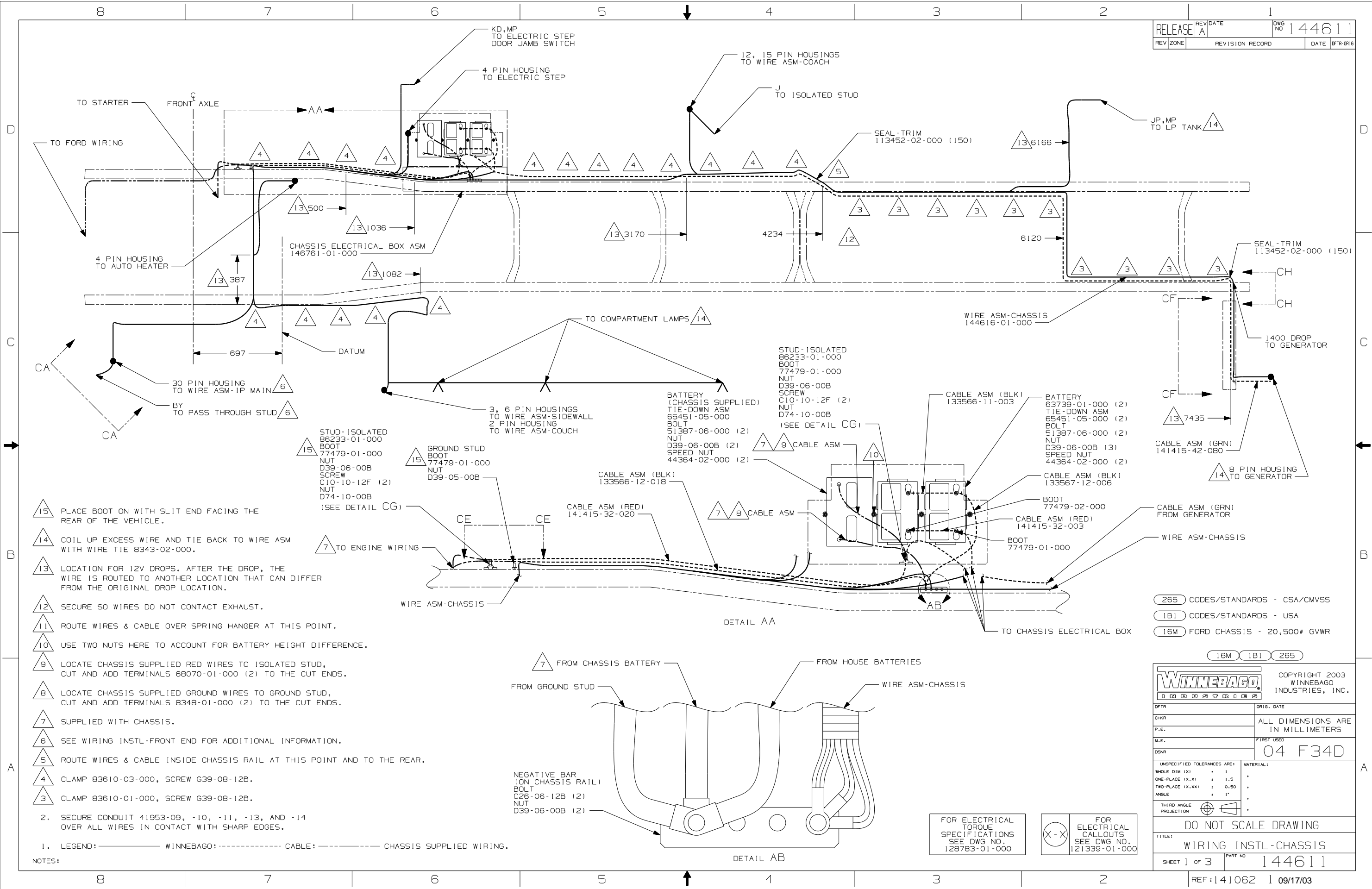
DANGER

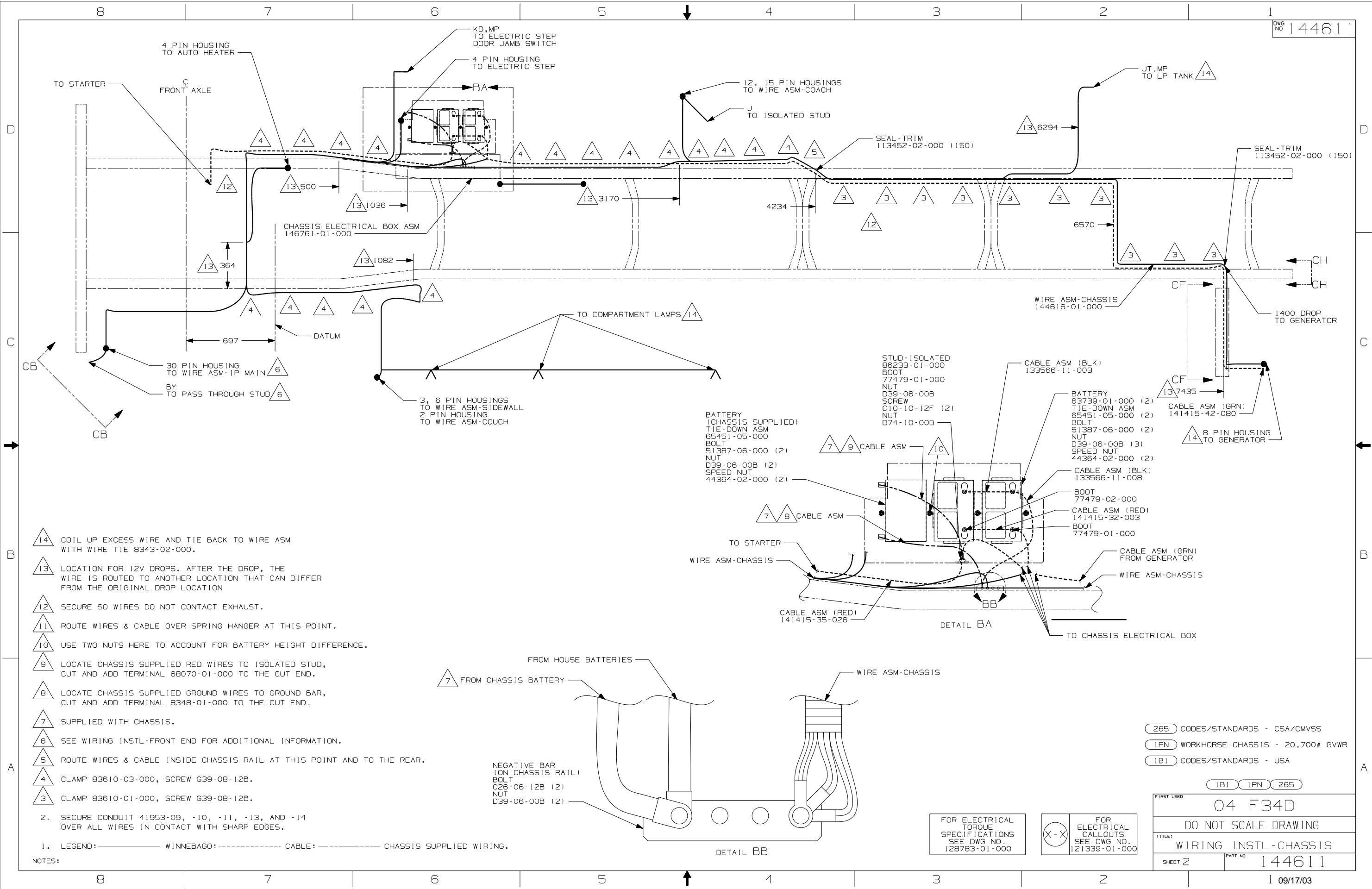
Danger of electrical shock, burns or death. Always remove all power sources before attempting any repair, service or diagnostic work. Power can be present from shore power, generator, inverter or battery. All power sources must be disabled and secured before performing any service.



CAUTION

If you lack the skills, tools or equipment to perform diagnostic or repair work leave such work to an authorized Winnebago Industries dealer or other qualified shop.





265 CODES/STANDARDS - CSA/CMVSS
IPN WORKHORSE CHASSIS - 20,700# GVWR
1B1 CODES/STANDARDS - USA

IBI IPN 265

04 F34D


DO NOT SCALE DRAWING

TITLE: WIRING INSTL-CHASSIS

| | |
|---------|----------------|
| SHEET 2 | PART NO 144611 |
|---------|----------------|

09/17/03

FOR ELECTRICAL
TORQUE
SPECIFICATIONS
SEE DWG NO.
128783-01-000

| | |
|---|--|
|  | <p>FOR ELECTRICAL CALLOUTS SEE DWG NO. 121339-01-000</p> |
|---|--|

NOTES:

