



DANGER

Danger of electrical shock, burns or death. Always remove all power sources before attempting any repair, service or diagnostic work. Power can be present from shore power, generator, inverter or battery. All power sources must be disabled and secured before performing any service.

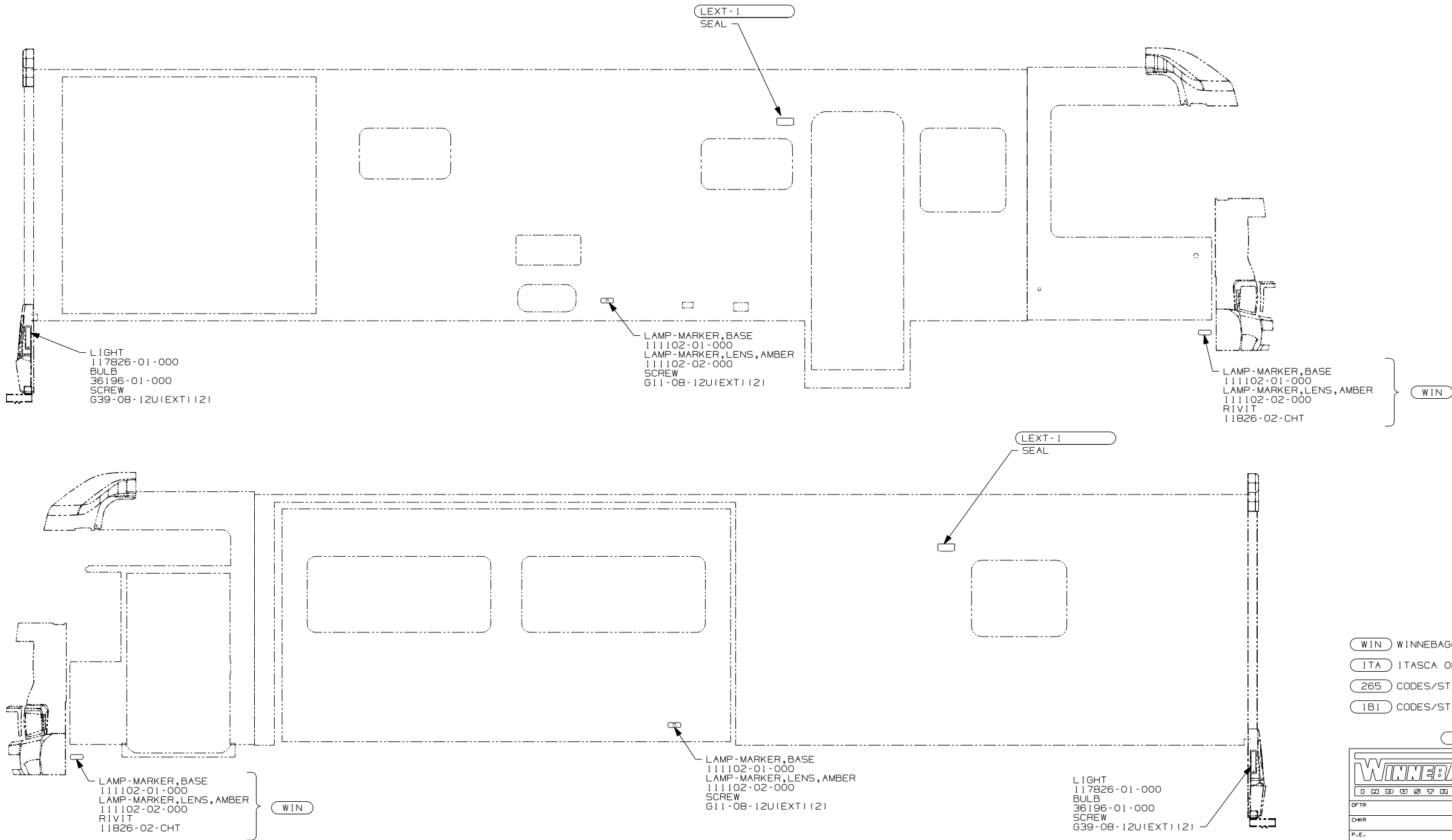


CAUTION


If you lack the skills, tools or equipment to perform diagnostic or repair work leave such work to an authorized Winnebago Industries dealer or other qualified shop.

DRAWING NO.	FEATURE
144951-01	WIN
144951-02	ITA

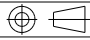
RELEASE	REV DATE A	DWG NO 144951
REV ZONE	REVISION RECORD	DATE DFR-0R16



- WIN WINNEBAGO ONLY
- ITA ITASCA ONLY
- 265 CODES/STANDARDS-CSA/CMVSS
- 1B1 CODES/STANDARDS USA

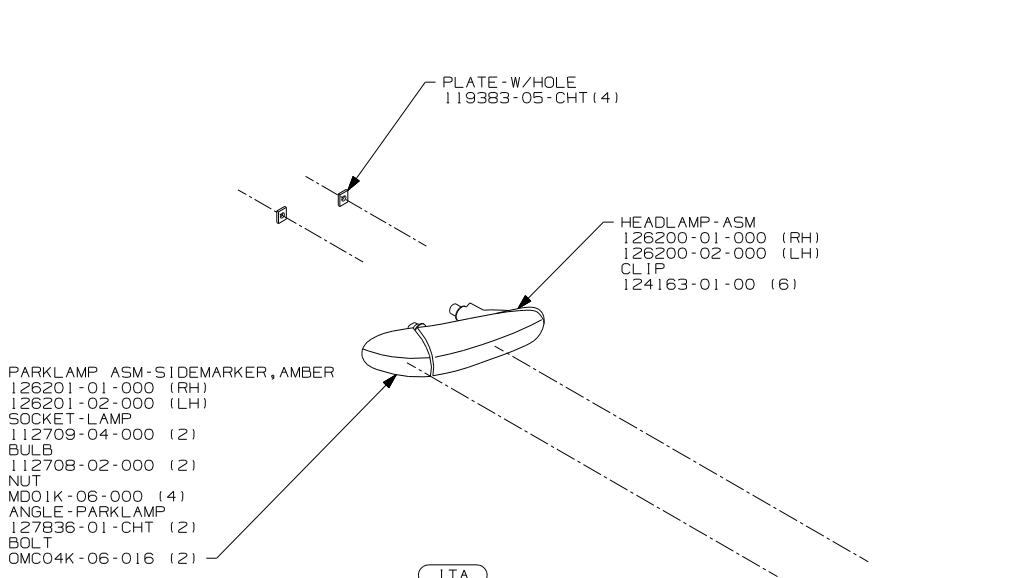
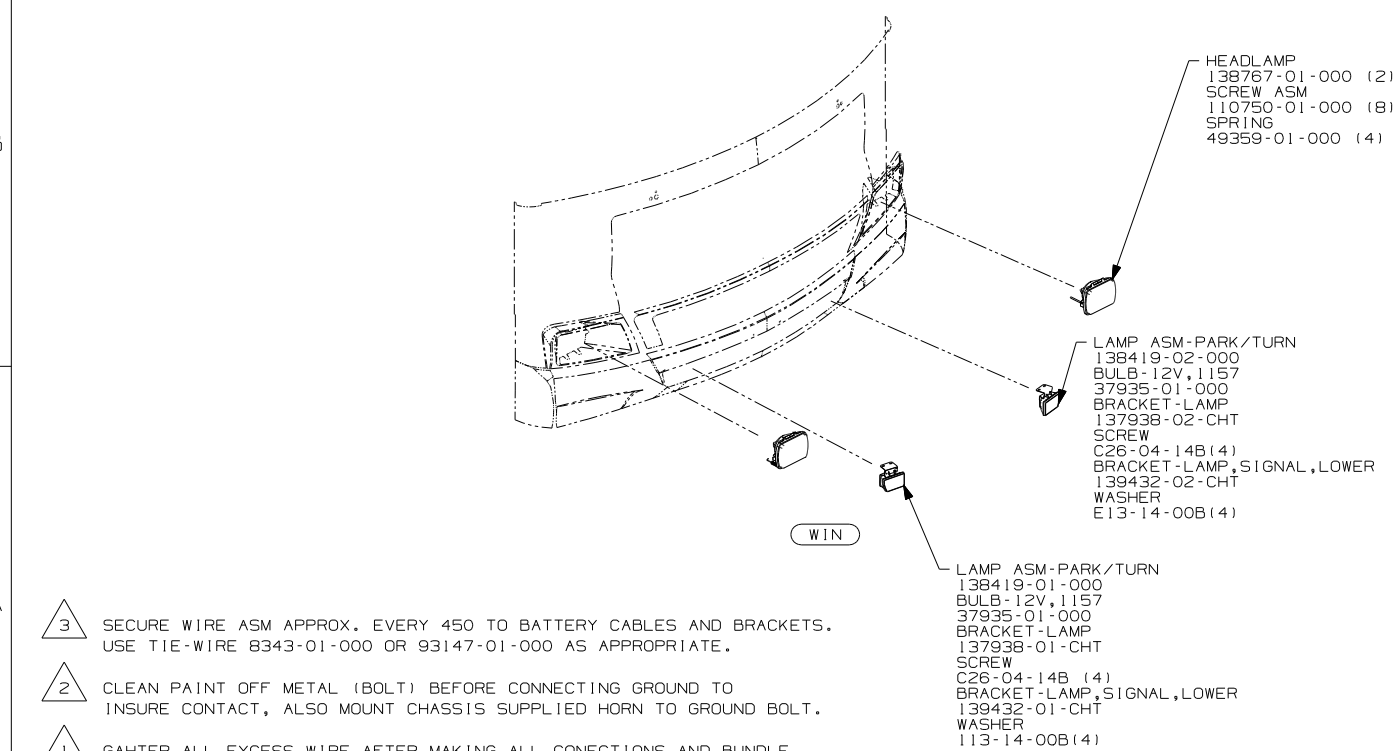
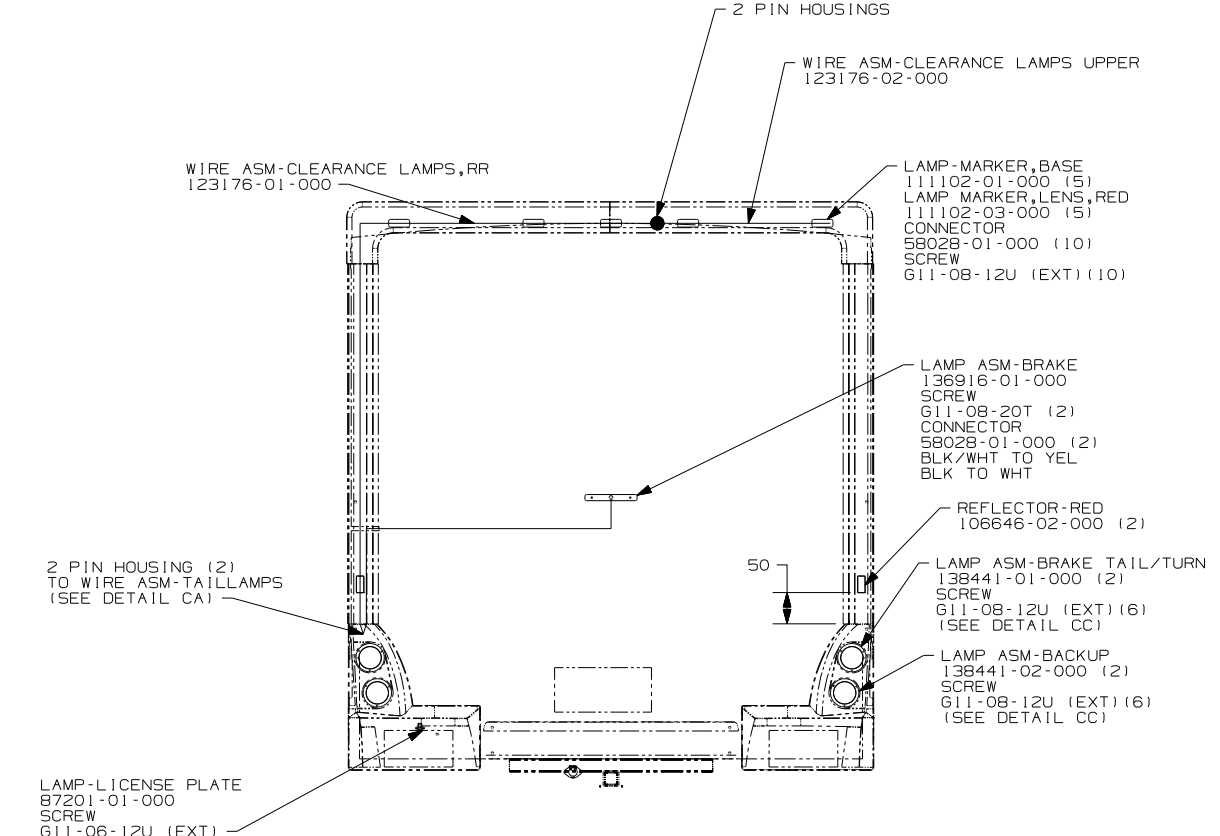
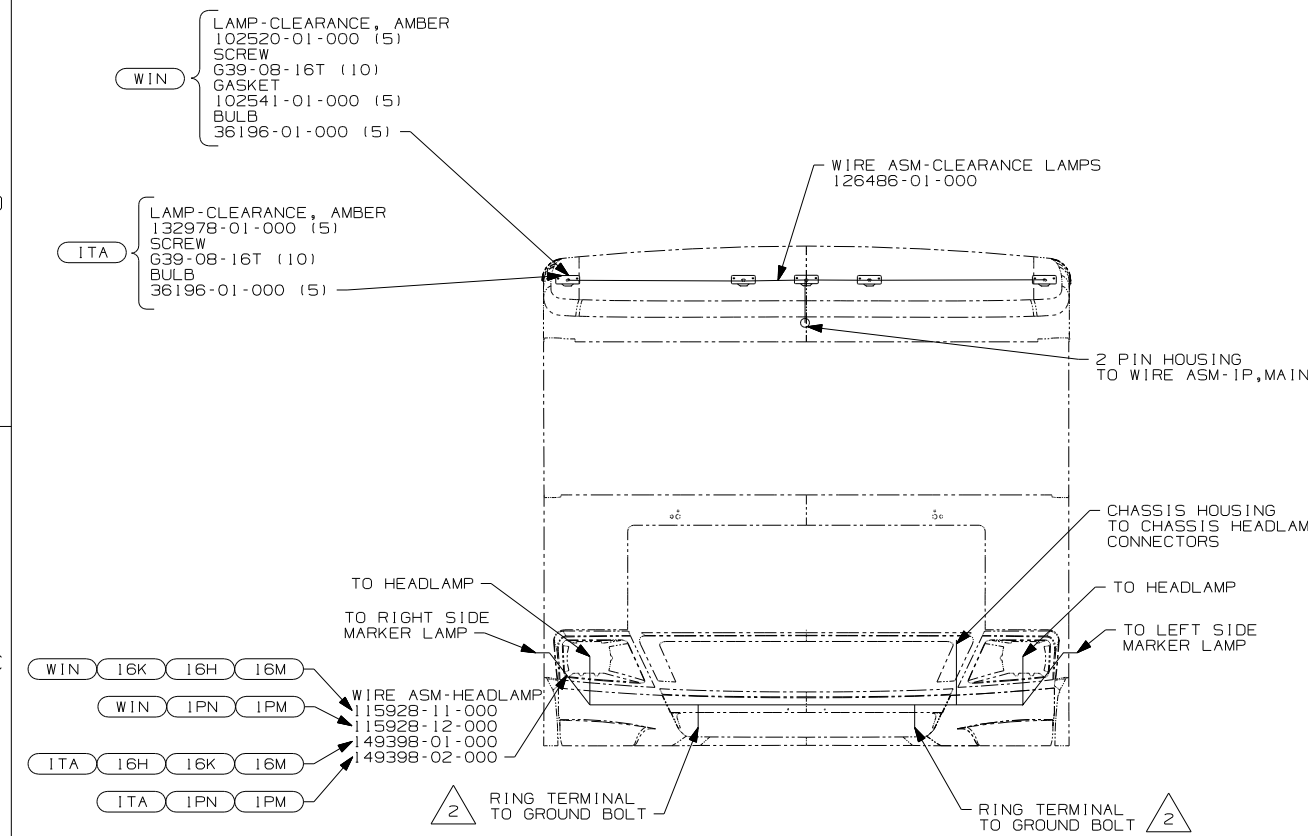


COPYRIGHT 2004
WINNEBAGO
INDUSTRIES, INC.

DFTR	ORIG. DATE	
CHKR	ALL DIMENSIONS ARE IN MILLIMETERS	
P.E.	FIRST USED	
M.E.	04 F-SERIES	
DSNR		
UNSPECIFIED TOLERANCES ARE:	MATERIAL:	
WHOLE DIM (X)	1	*
ONE-PLACE (X,X)	1.5	*
TWO-PLACE (X,XX)	0.50	*
ANGLE	1°	*
THIRD ANGLE PROJECTION		*
DO NOT SCALE DRAWING		
TITLE: WIRING INSTL-EXTERIOR LAMPS		
SHEET 1 OF 3	PART NO	144951
REF:142012 1 1/7/2004		

FOR ELECTRICAL
TORQUE
SPECIFICATIONS
SEE DWG NO.
128783-01-000

FOR
ELECTRICAL
CALLOUTS
SEE DWG NO.
121339-01-000



3 SECURE WIRE ASM APPROX. EVERY 450 TO BATTERY CABLES AND BRACKETS. USE TIE-WIRE 8343-01-000 OR 93147-01-000 AS APPROPRIATE.

2 CLEAN PAINT OFF METAL (BOLT) BEFORE CONNECTING GROUND TO INSURE CONTACT, ALSO MOUNT CHASSIS SUPPLIED HORN TO GROUND BOLT.

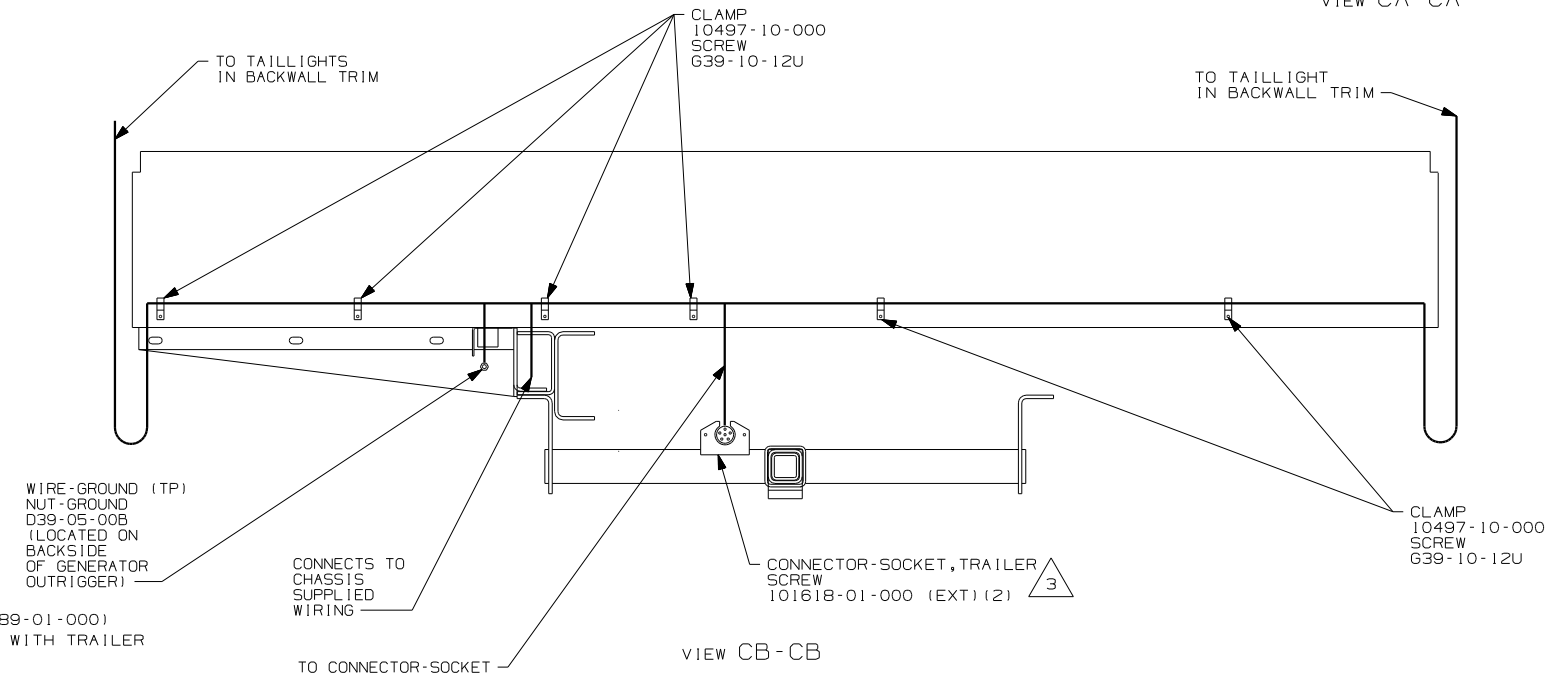
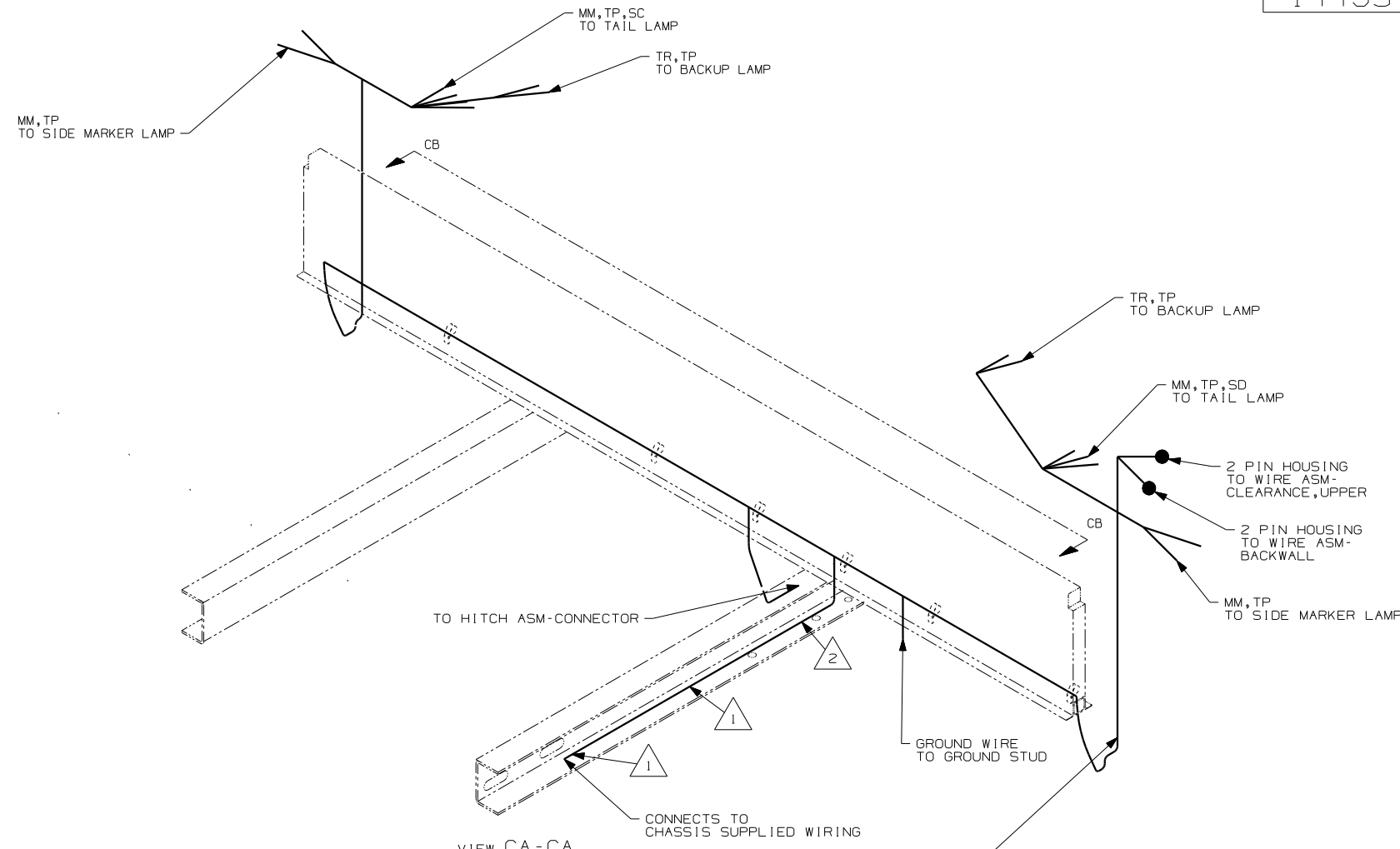
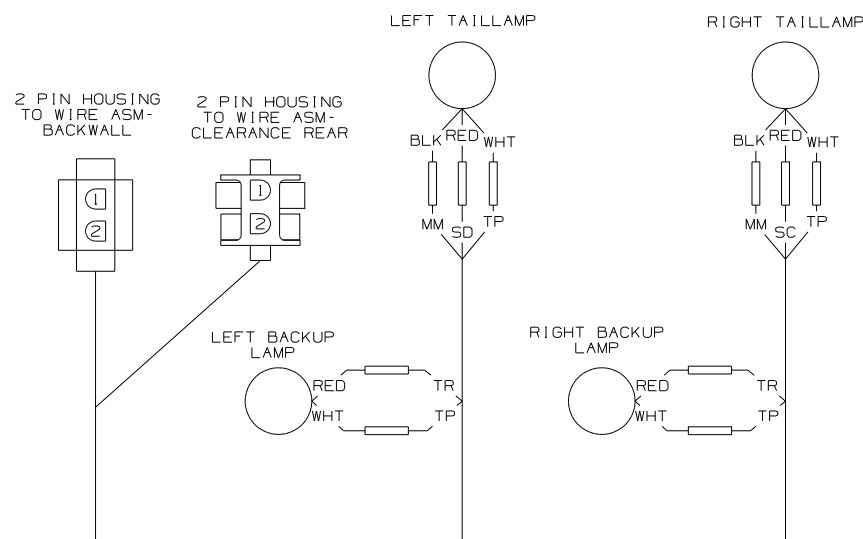
1 GAHTER ALL EXCESS WIRE AFTER MAKING ALL CONECTIONS AND BUNDLE AND SECURE WITH TIE-WIRE 8343-01-000 OR 93147-01-000.

- WIN WINNEBAGO ONLY
- ITA ITASCA ONLY
- 265 CODES/STANDARDS - CSA/CMVSS
- 1PN WORKHORSE CHASSIS - 20,700# GVWR
- 1PM WORKHORSE CHASSIS - 18,000# GVWR
- 1B1 CODES/STANDARDS - USA
- 16M FORD CHASSIS - 20,500# GVWR
- 16K FORD CHASSIS - 22,000# GVWR
- 16H FORD CHASSIS - 18,000# GVWR

FOR ELECTRICAL TORQUE SPECIFICATIONS SEE DWG NO. 128783-01-000

FOR ELECTRICAL CALLOUTS SEE DWG NO. 121339-01-000

FIRST USED	
04 F-SERIES	
DO NOT SCALE DRAWING	
TITLE: WIRING INSTL-EXTERIOR LAMPS	
SHEET 2	PART NO 144951



- 3 CONNECTOR-PLUG, TRAILER (113589-01-000) TO BE SUPPLIED LOOSE IN COACH WITH TRAILER TOW PACKAGE.
- 2 WIRE TIE TO BE ROUTED ON BACK SIDE OF RISER.
- 1 WIRE TIE 8343-02-000 FASTEN TO FRAMW AT LEAST ONCE EVERY 600MM.
- NOTES:

265	CODES/STANDARDS - CSA/CMVSS
1PN	WORKHORSE CHASSIS - 20,700# GVWR
1PM	WORKHORSE CHASSIS - 18,000# GVWR
1B1	CODES/STANDARDS - USA
16M	FORD CHASSIS - 20,500# GVWR
16K	FORD CHASSIS - 22,000# GVWR
16H	FORD CHASSIS - 18,000# GVWR

FIRST USED	
04 F-SERIES	
DO NOT SCALE DRAWING	
TITLE:	
WIRING INSTL-EXTERIOR LAMPS	
SHEET 3	PART NO 144951