



DANGER

Danger of electrical shock, burns or death. Always remove all power sources before attempting any repair, service or diagnostic work. Power can be present from shore power, generator, inverter or battery. All power sources must be disabled and secured before performing any service.



CAUTION

If you lack the skills, tools or equipment to perform diagnostic or repair work leave such work to an authorized Winnebago Industries dealer or other qualified shop.

		8		7		6		5		4		3		2		1	
				F30W		F32V		F34D		F36M							
D	BLK	14-UL		136131-06-070		136131-06-035		136131-06-035		136131-06-119		276		29R			
		14-CA		136134-06-070		136134-06-035		136134-06-035		136134-06-119		276		29R			
	BLK	12-UL		136135-06-070		N/A		N/A		N/A		1F7					
		12-CA		136136-06-070		N/A		N/A		N/A		1F7					
	BLU	14-UL		136131-02-157		136131-02-081		136131-02-081		136131-02-195							
		14-CA		136134-02-157		136134-02-081		136134-02-081		136134-02-195							
BRN	14-UL		136131-03-070		136131-03-097		136131-03-135		136131-03-171								
	14-CA		136134-03-070		136134-03-097		136134-03-135		136134-03-171								
GLD	12-UL		N/A		N/A		136135-10-130		136135-10-112		21M		54E				
	12-CA		N/A		N/A		136136-10-130		136136-10-112		21M		54E				
GRN	12-UL		N/A		136135-08-118		136135-08-118		136135-08-027		276		29R		78J		
	12-CA		N/A		136136-08-118		136136-08-118		136136-08-027		276		29R		78J		
GRN	12-UL		136135-08-075		136135-08-100		136135-08-105		136135-08-056		276		29R		12D		
	12-CA		136136-08-075		136136-08-100		136136-08-105		136136-08-056		276		29R		12D		
GRN 2	12-UL		136135-14-067		136135-14-069		136135-14-066		136135-14-054		276		29R		12D		
	12-CA		136136-14-067		136136-14-069		136136-14-066		136136-14-054		276		29R		12D		
PUR	14-UL		136131-04-100		136131-04-230		136131-04-210		136131-04-096								
	14-CA		136134-04-100		136134-04-230		136134-04-210		136134-04-096								
RED	12-UL		136135-07-096		136135-07-112		136135-07-109		136135-07-027								
	12-CA		136136-07-096		136136-07-112		136136-07-109		136136-07-027								
WHT	12-UL		136135-09-079		136135-09-085		136135-09-085		136135-09-095		53D						
	12-CA		136136-09-079		136136-09-085		136136-09-085		136136-09-095		53D						
YEL	14-UL		136131-05-028		N/A		N/A		N/A		1F7						
	14-CA		136134-05-028		N/A		N/A		N/A		1F7						
YEL	14-UL		136131-05-014		136131-05-035		136131-05-035		136131-05-119		276		29R				
	14-CA		136134-05-014		136134-05-035		136134-05-035		136134-05-119		276		29R				
YEL 2	14-UL		136131-13-028		136131-13-055		136131-13-055		136131-13-101		276		29R				
	14-CA		136134-13-028		136134-13-055		136134-13-055		136134-13-101		276		29R				
MAIN	10-UL		136137-01-075		136137-01-100		136137-01-105		136137-01-056		12D						
	10-CA		136138-01-075		136138-01-100		136138-01-105		136138-01-056		12D						
	6-3 UL		136139-01-075		136139-01-100		136139-01-105		136139-01-056		78J						
	6-3 CA		136140-01-075		136140-01-100		136140-01-105		136140-01-056		78J						
MAIN GROUND			136145-01-020		136145-01-034		136145-01-034		136145-01-040								
ATS GROUND			136145-01-060		136145-01-065		136145-01-070		136145-01-026		276		29R				
THROW IN WIRE #1	14-UL		136131-03-080		136131-03-062		136131-03-068		136131-03-072								
	14-CA		136134-03-080		136134-03-062		136134-03-068		136134-03-072								
SLIDEOUT WIRE #1			136151-03-030		136151-03-028		136151-03-028		136151-03-028								
SLIDEOUT WIRE #2			136151-04-026		136151-04-017		136151-04-017		136151-04-017								
SLIDEOUT WIRE #3			136152-06-030		N/A		N/A		N/A								
		8		7		6		5		4		3		2		1	

RELEASE		REV DATE		DWG NO		144656	
REV	ZONE	REVISION RECORD				DATE	DTR ORIG

78J

ELECTRICAL SYSTEM - 50 AMP

54E

WASHER/DRYER COMBINATION

53D

WTR HTR - 6 GAL/ELE/LP/MOTORAID

29R

HEAT PUMPS - 2-HI EFF

276

A/C ROOF - HI EFF (2) W/EMS

265

CODES/STANDARDS - CSA/CMVSS

21M

WASHER/DRYER PREP

1F7

ENERGY MANAGEMENT SYSTEM W/O

1B1

CODES/STANDARDS - USA

12D

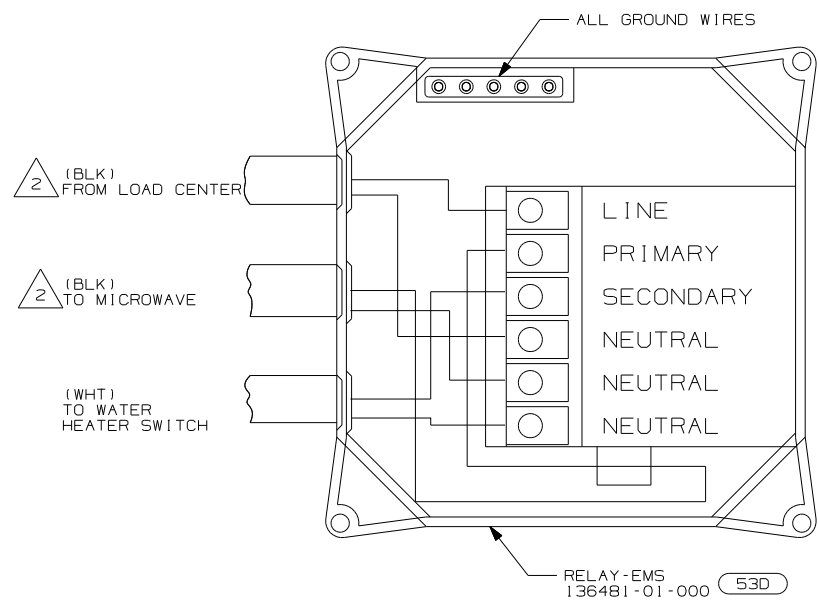
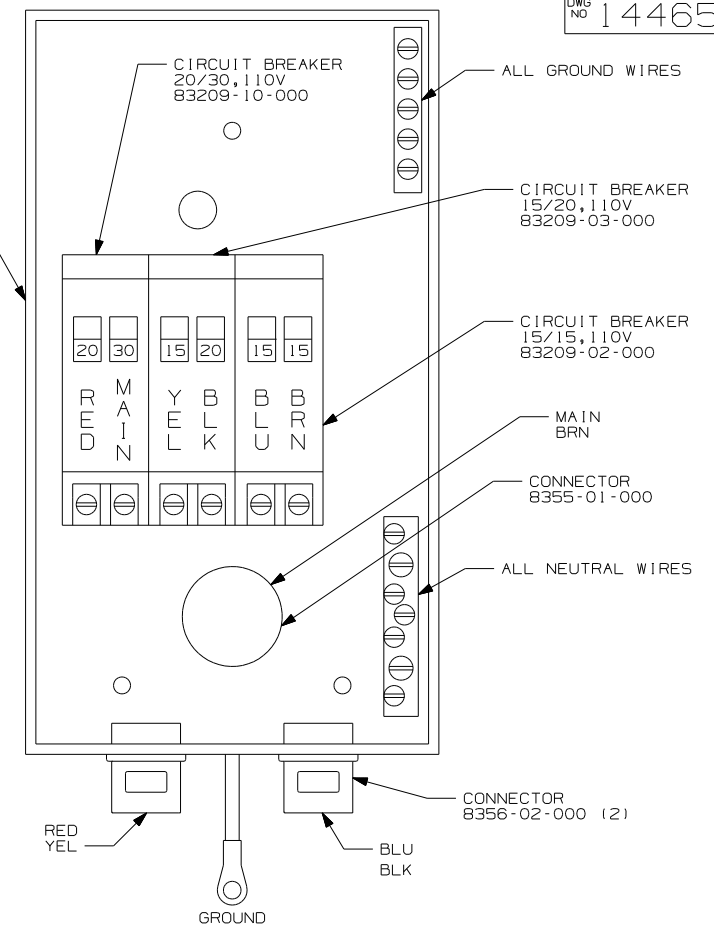
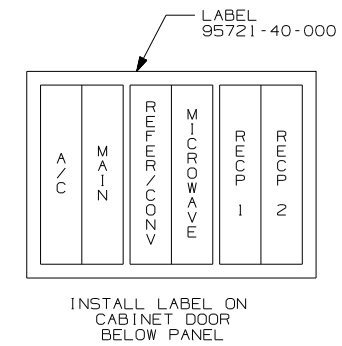
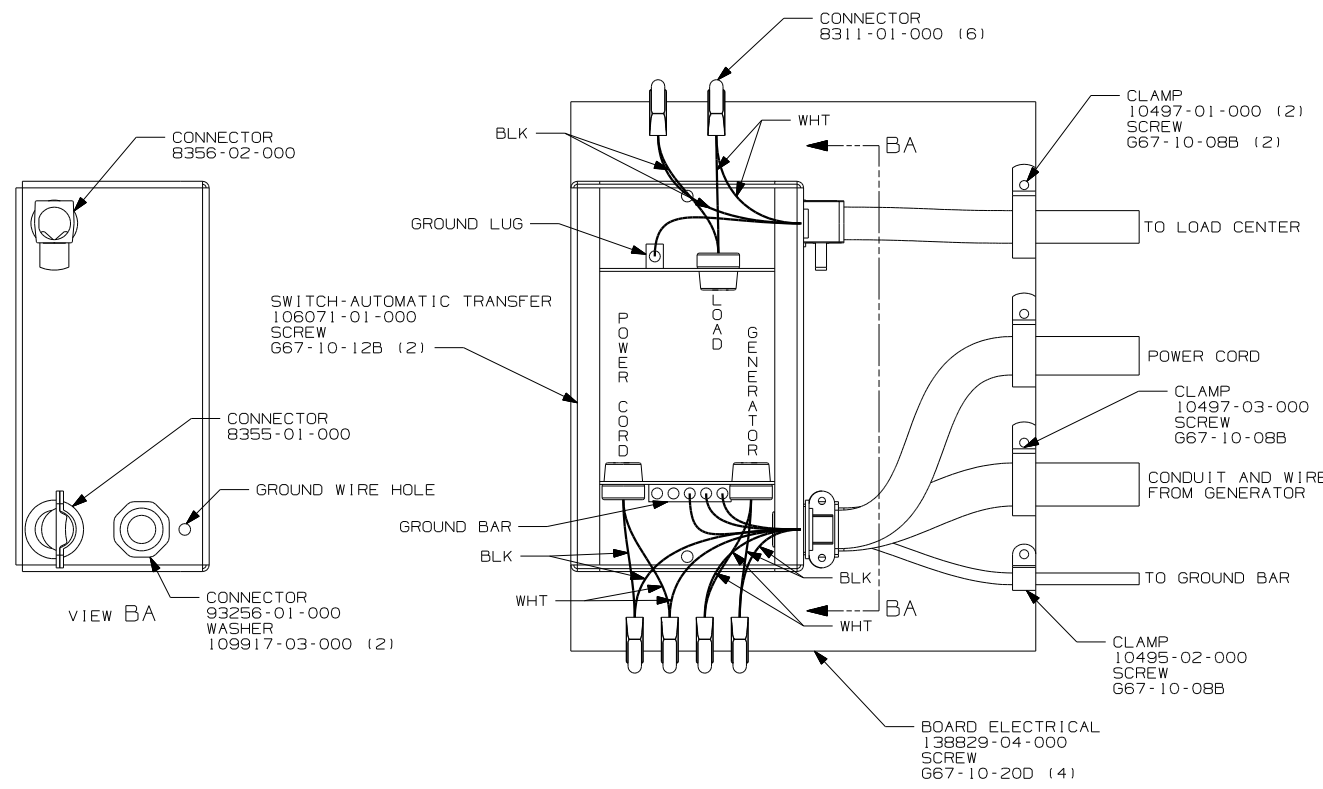
ELECTRICAL SYSTEM - 30 AMP

1B1

265

WINNEBAGO

0 0



- 53D WTR HTR-6 GAL/ELE/LP/MOTORA1D
- 265 CODES/STANDARDS - CSA/CMVSS
- 1F7 ENERGY MANAGEMENT SYSTEM W/O
- 1B1 CODES/STANDARDS - USA
- 12D ELECTRICAL SYSTEM - 30 AMP

MEASURE 1000MM FROM THE BACK OF THE LOAD CENTER, LOOP THE BLACK WIRE AND CONNECT AS SHOWN.

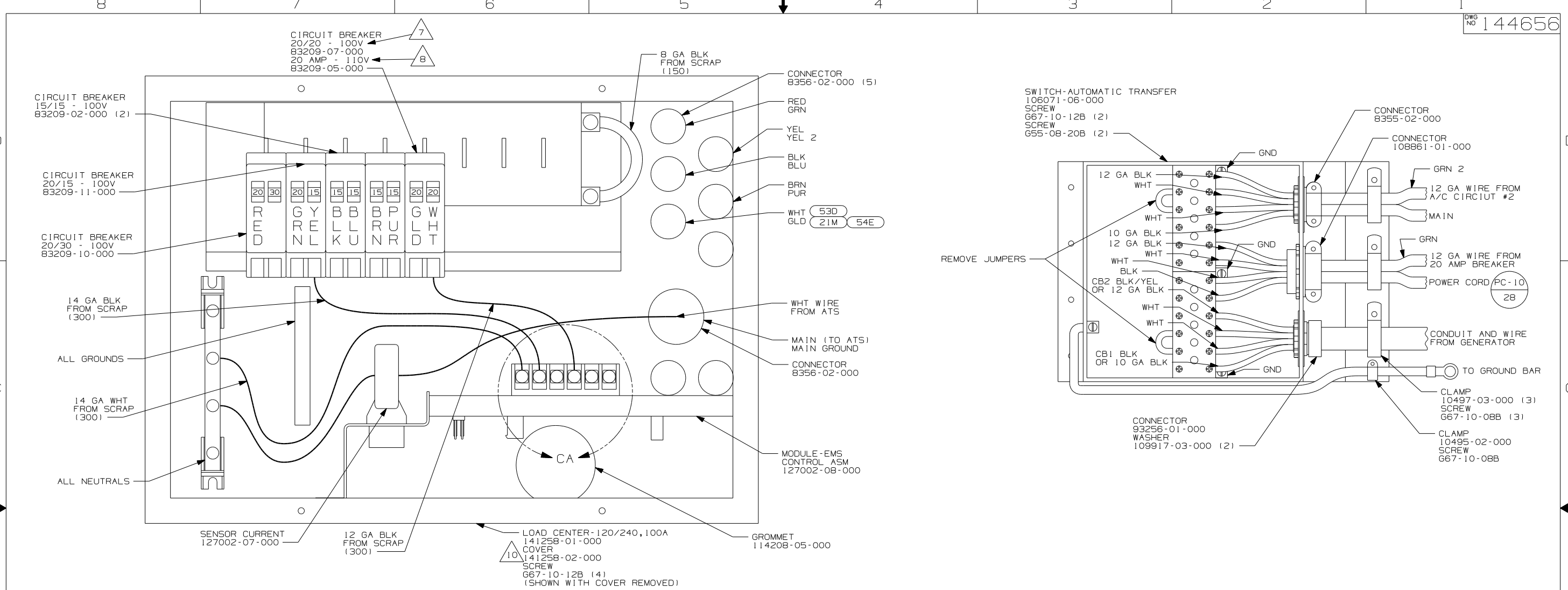
1. ALL GROUND WIRES TO BE COVERED WITH TUBING 8041-02-000.

NOTES:

FOR ELECTRICAL TORQUE SPECIFICATIONS SEE DWG NO. 128783-01-000

FOR ELECTRICAL CALLOUTS SEE DWG NO. 121339-01-000

FIRST USED	
04 F-SERIES	
DO NOT SCALE DRAWING	
TITLE: LOAD CENTER/ATS ASM	
SHEET 2	PART NO 144656



10 INSTALLED BY ASSEMBLY LINE.

9 WITHOUT 53D .

8 WITH 21M WITHOUT 53D , OR WITH 54E WITHOUT 53D , OR WITH 53D WITHOUT 21M 54E ONLY.

7 WITH 21M 53D OR 54E 53D ONLY.

6. ALL WIRES MUST BE 500MM LONG INSIDE LOAD CENTER.

5. ATTACH WIRES TO BACKSIDE OF LOAD CENTER, USE EXISTING HOLES AND TIE-WIRE 116673-01-000.

4. ALL 110V STRANDED WIRE W/O TERMINALS TO BE STRIPPED 10MM AND SOLDER DIPPED.

3. ALL WIRES TO BE CLAMPED WITHIN 200MM OF ATS.

2. GROUND WIRES ARE NOT SHOWN FOR CLARITY.

1. ALL GROUND WIRES TO BE COVERED WITH TUBING 8041-02-000.

TO NEUTRAL BAR

FROM (YEL) BREAKER

(YEL-2) WIRE

FROM (WHT) BREAKER

(WHT) WIRE

(YEL) WIRE

14 GA BLK FROM SCRAP (100)

TO NEUTRAL BAR

FROM (YEL) BREAKER

(YEL-2) WIRE

14 GA BLK FROM SCRAP (100)

(YEL) WIRE

54E WASHER/DRYER

53D WTR HTR - 6 GAL/ELE/LP/MOTOR/ID

29R HEAT PUMPS-2-HI EFF

276 A/C ROOF - HI EFF (2) W/EMS

265 CODES/STANDARDS - CSA/CMVSS

21M WASHER/DRYER PREP

1B1 CODES/STANDARDS - USA

12D ELECTRICAL SYSTEM - 30 AMP

FOR ELECTRICAL TORQUE SPECIFICATIONS SEE DWG NO. 128783-01-000

FOR ELECTRICAL CALLOUTS SEE DWG NO. 121339-01-000

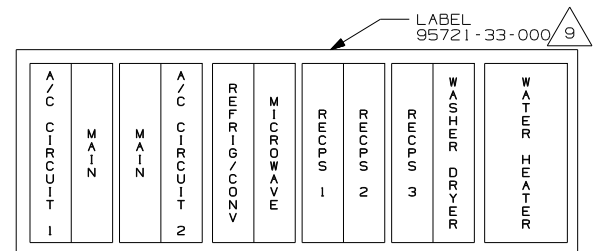
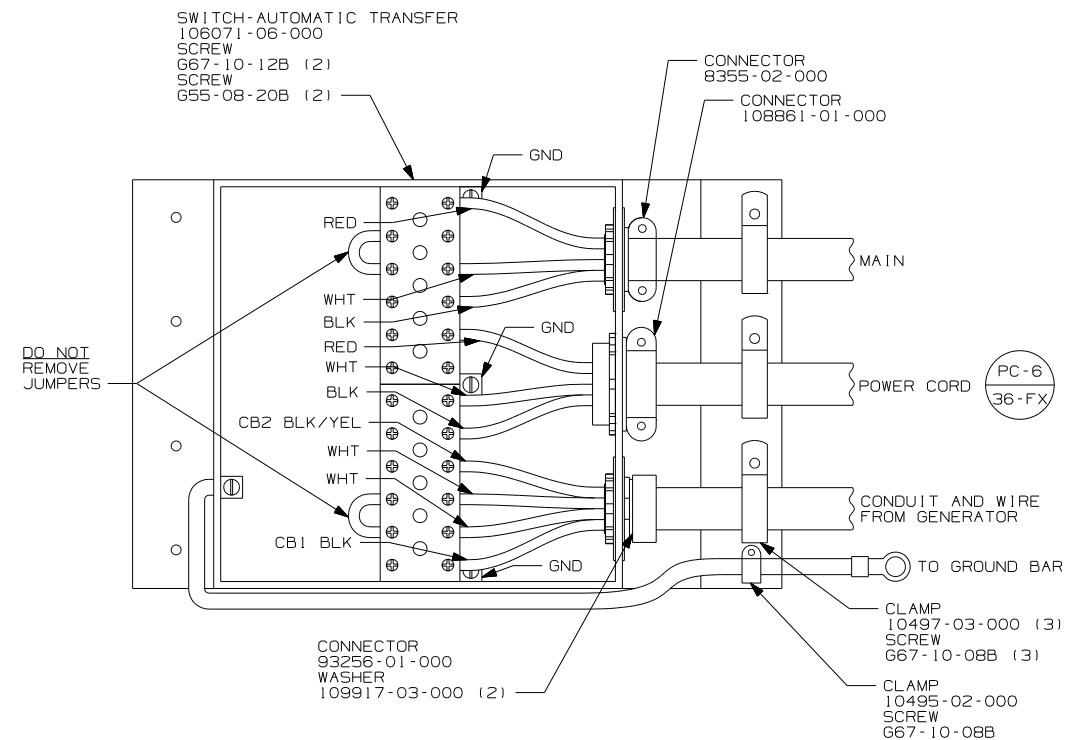
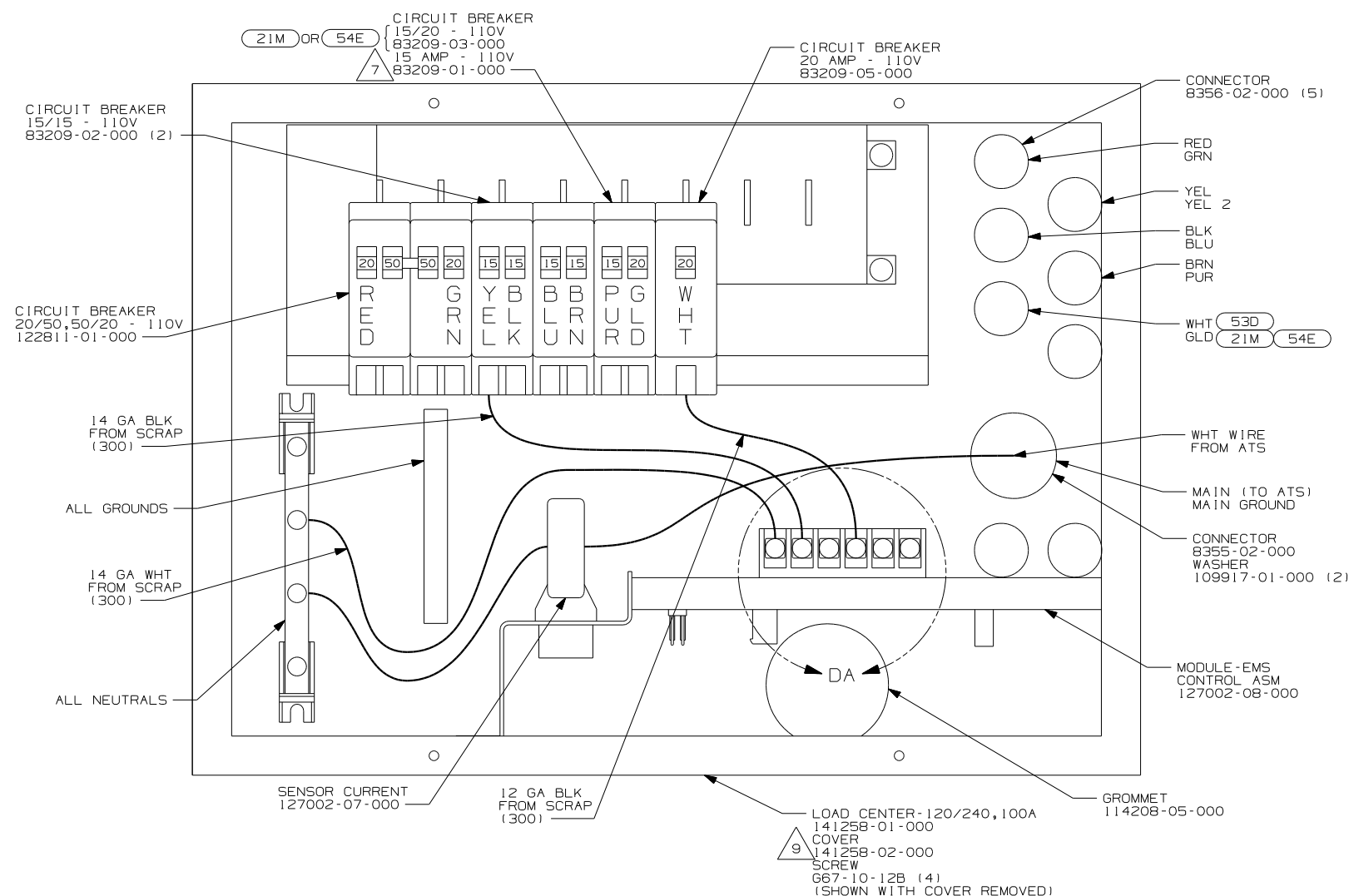
FIRST USED

04 F-SERIES

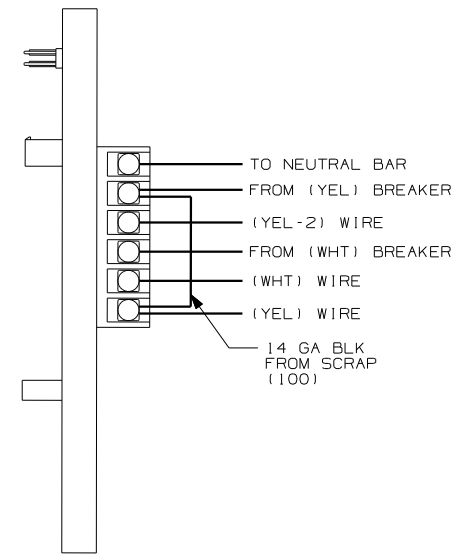
DO NOT SCALE DRAWING

TITLE: LOAD CENTER/ATS ASM

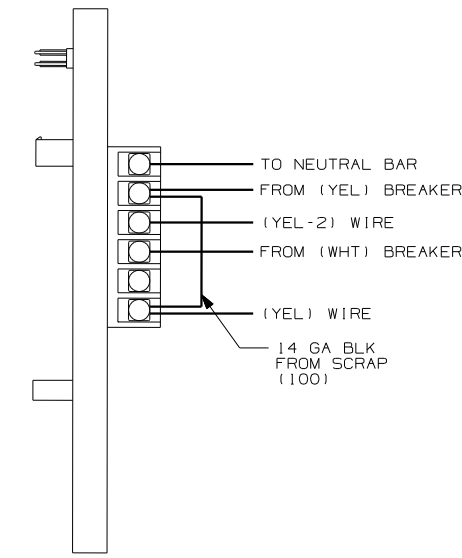
SHEET 3 PART NO 144656



INSTALL LABEL ON FRONT COVER PLATE BELOW THE BREAKERS



DETAIL DA



DETAIL DA 8

- NOTES:
1. ALL GROUND WIRES TO BE COVERED WITH TUBING 8041-02-000.
 2. GROUND WIRES ARE NOT SHOWN FOR CLARITY.
 3. ALL WIRES TO BE CLAMPED WITHIN 200MM OF ATS.
 4. ALL 110V STRANDED WIRE W/O TERMINALS TO BE STRIPPED 10MM AND SOLDER DIPPED.
 5. ATTACH WIRES TO BACKSIDE OF LOAD CENTER, USE EXISTING HOLES AND TIE-WIRE 116673-01-000.
 6. ALL WIRES MUST BE 500MM LONG INSIDE LOAD CENTER.

FOR ELECTRICAL TORQUE SPECIFICATIONS SEE DWG NO. 128783-01-000

FOR ELECTRICAL CALLOUTS SEE DWG NO. 121339-01-000

- (78J) ELECTRICAL SYSTEM - 50 AMP
- (54E) WASHER/DRYER
- (29R) HEAT PUMPS-2-HI EFF
- (276) A/C ROOF-HI EFF (2) W/EMS
- (265) CODES/STANDARDS - CSA/CMVSS
- (21M) WASHER/DRYER PREP
- (1F7) ENERGY MANAGEMENT SYSTEM W/O
- (1B1) CODES/STANDARDS - USA

FIRST USED	
04 F-SERIES	
DO NOT SCALE DRAWING	
TITLE: LOAD CENTER/ATS ASM	
SHEET 4	PART NO 144656

