



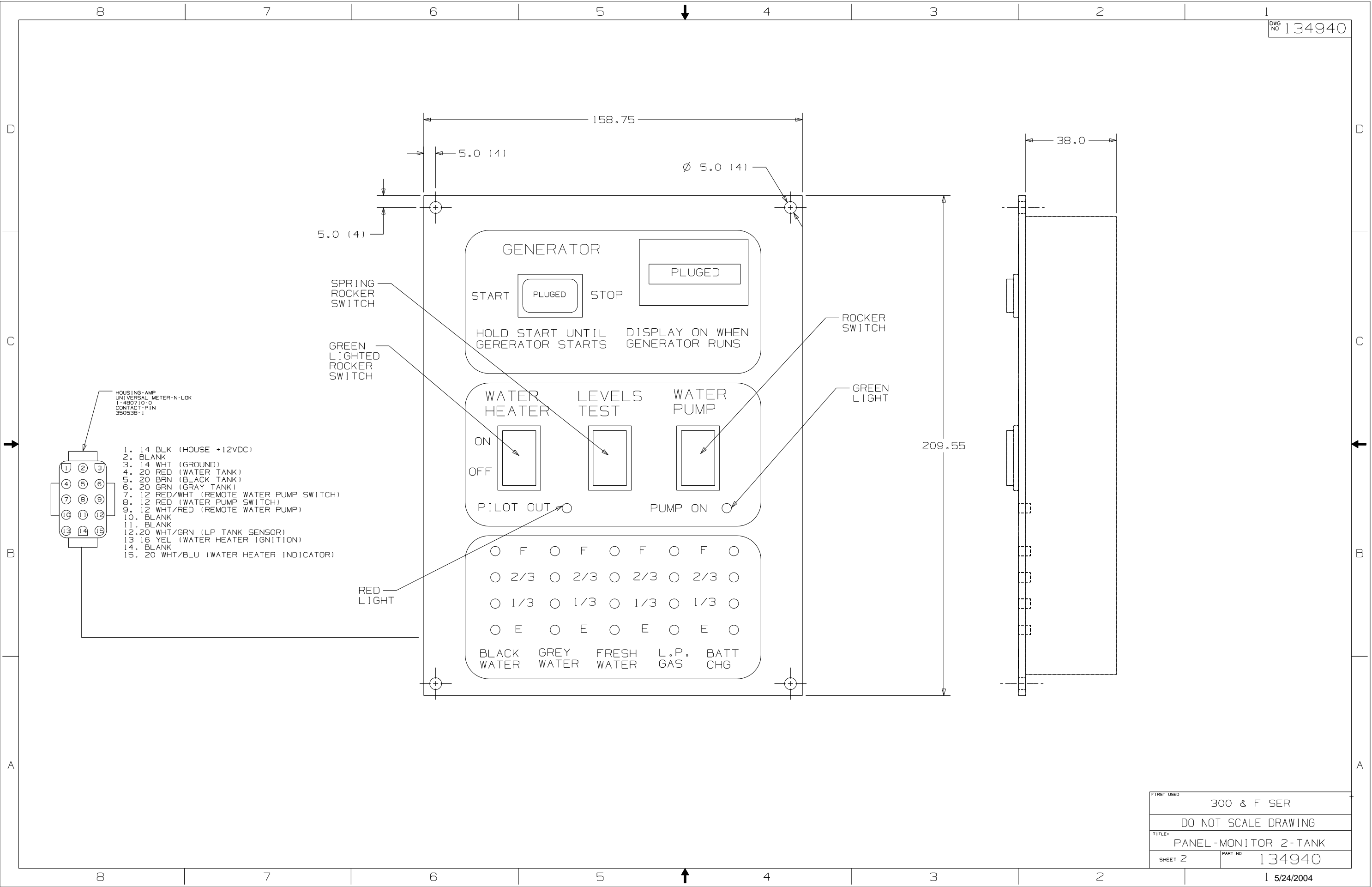
DANGER

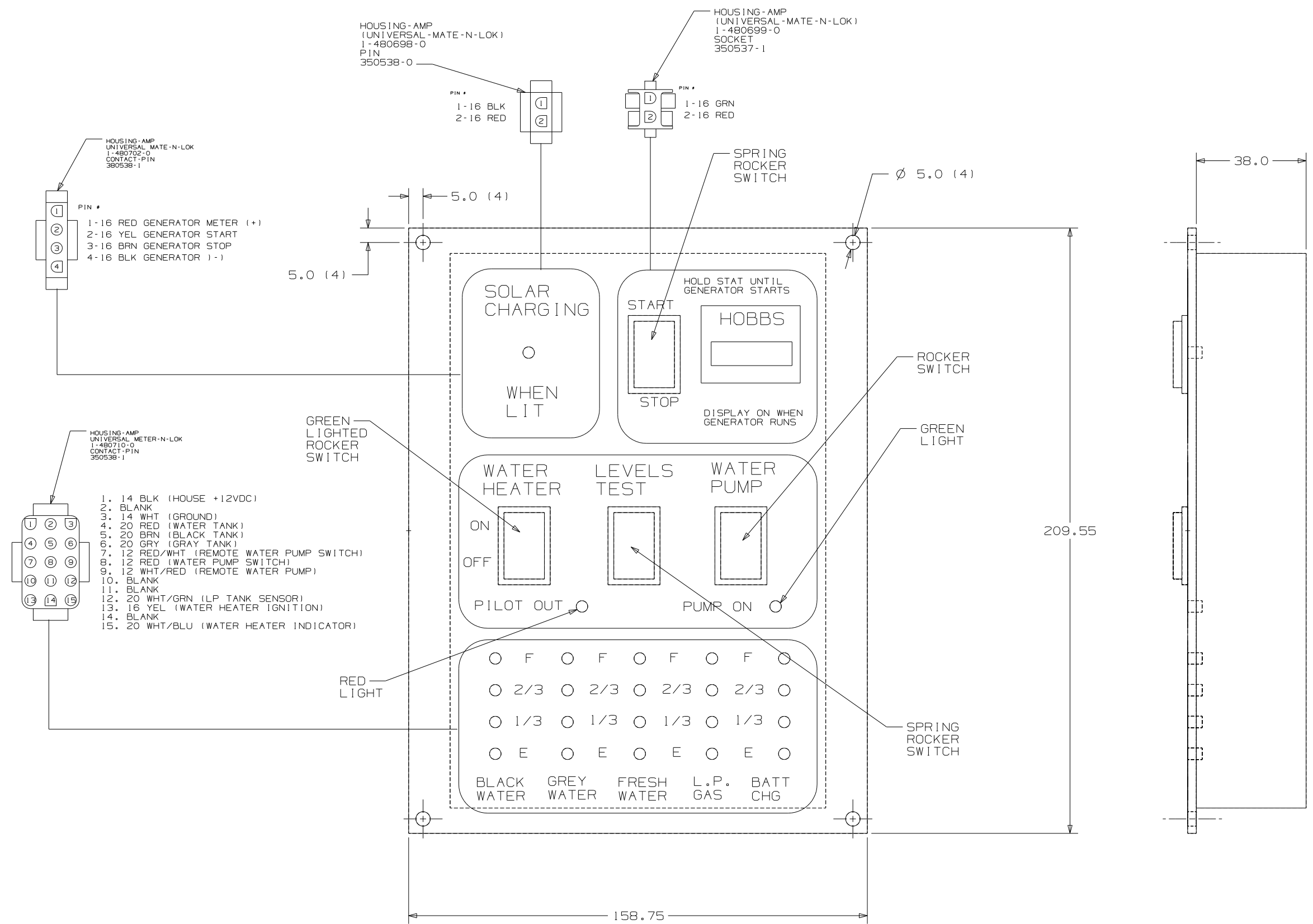
Danger of electrical shock, burns or death. Always remove all power sources before attempting any repair, service or diagnostic work. Power can be present from shore power, generator, inverter or battery. All power sources must be disabled and secured before performing any service.



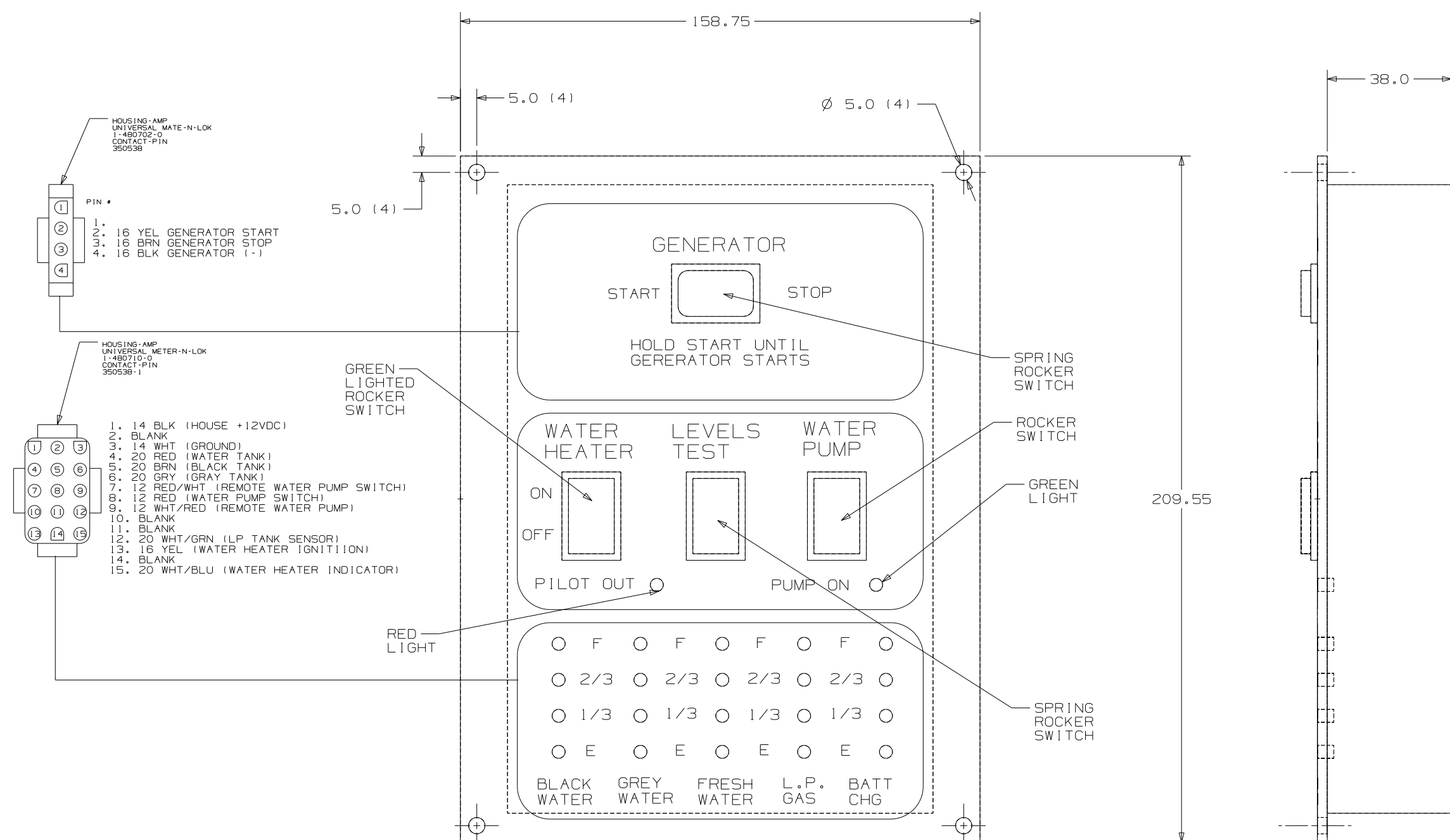
CAUTION

If you lack the skills, tools or equipment to perform diagnostic or repair work leave such work to an authorized Winnebago Industries dealer or other qualified shop.





| | |
|------------|----------------------|
| FIRST USED | 300 & F SER |
| TITLE | DO NOT SCALE DRAWING |
| SHEET 3 | PART NO 134940 |
| | 1 5/24/2004 |



- HOUSING-AMP
UNIVERSAL MATE-N-LOK
1-480702-0
CONTACT-PIN
350538
- PIN #
- 1. 16 YEL GENERATOR START
 - 2. 16 BRN GENERATOR STOP
 - 3. 16 BLK GENERATOR (-)

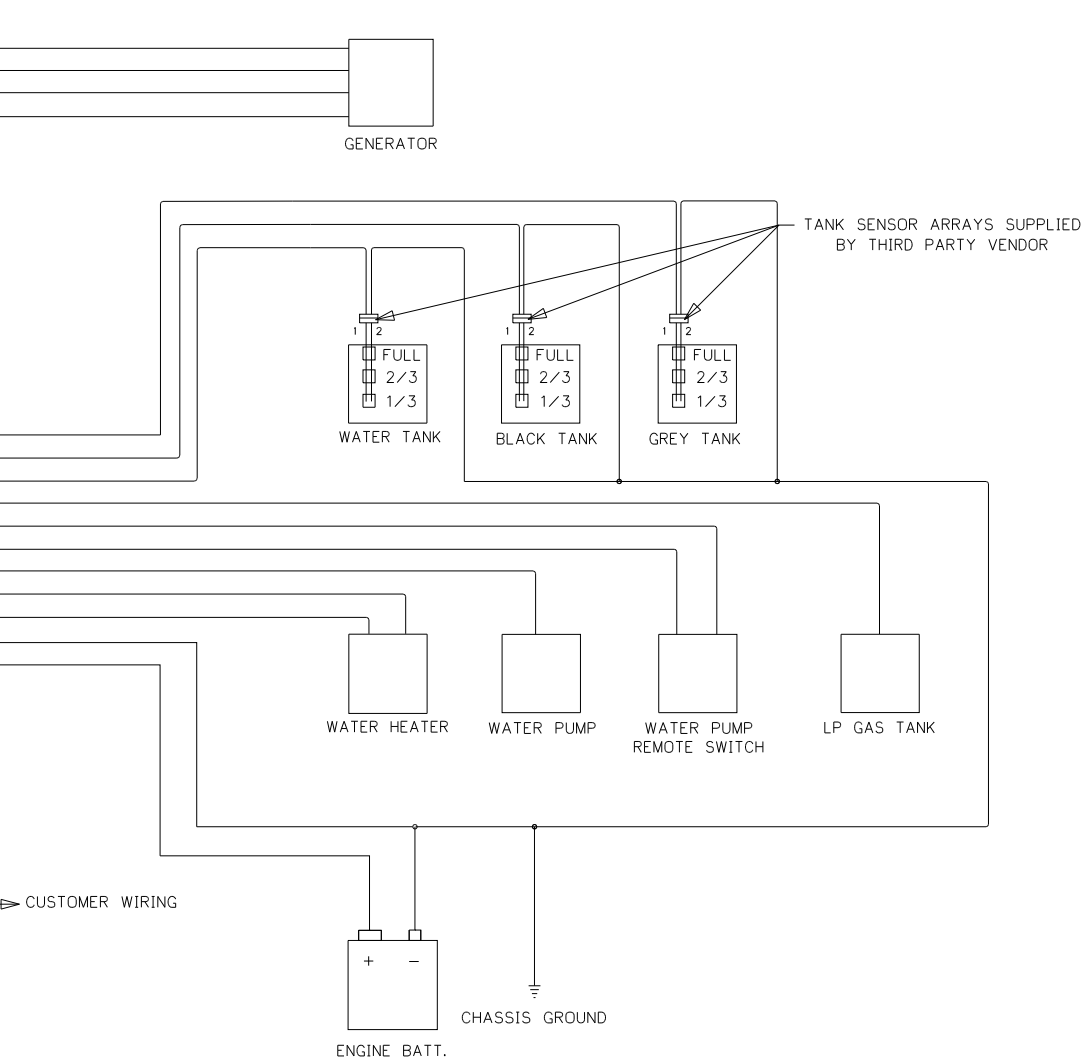
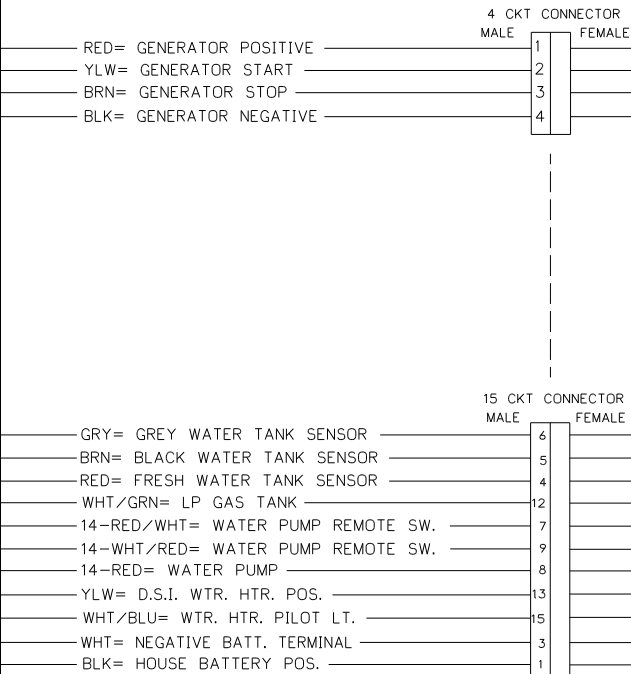
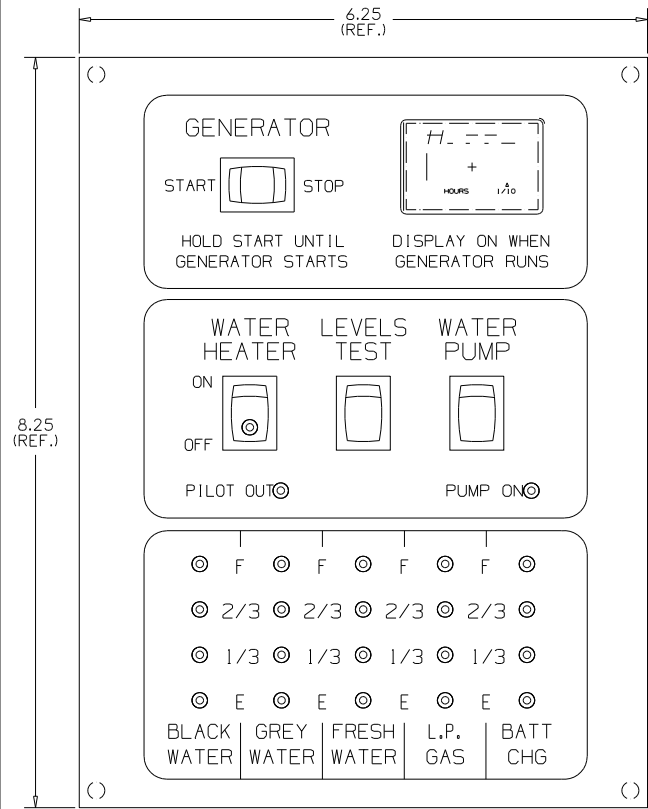
- HOUSING-AMP
UNIVERSAL MATE-N-LOK
1-480710-0
CONTACT-PIN
350538-1
- 1. 14 BLK (HOUSE +12VDC)
 - 2. BLANK
 - 3. 14 WHT (GROUND)
 - 4. 20 RED (WATER TANK)
 - 5. 20 BRN (BLACK TANK)
 - 6. 20 GRN (GRAY TANK)
 - 7. 12 RED/WHT (REMOTE WATER PUMP SWITCH)
 - 8. 12 RED (WATER PUMP SWITCH)
 - 9. 12 WHT/RED (REMOTE WATER PUMP)
 - 10. BLANK
 - 11. BLANK
 - 12. 20 WHT/GRN (LP TANK SENSOR)
 - 13. 16 YEL (WATER HEATER IGNITION)
 - 14. BLANK
 - 15. 20 WHT/BLU (WATER HEATER INDICATOR)

| | |
|------------|----------------------|
| FIRST USED | 300 & F SER |
| TITLE | DO NOT SCALE DRAWING |
| SHEET 4 | PANEL-MONITOR 2-TANK |
| PART NO | 134940 |

THIS DOCUMENT, INCLUDING ALL INFORMATION CONTAINED HEREIN, IS THE EXCLUSIVE AND CONFIDENTIAL PROPERTY OF VENTLINE DIVISION OF TOWING INDUSTRIES INC. THE DOCUMENT AND INFORMATION ARE NOT TO BE COPIED, REPRODUCED OR DELIVERED TO OTHERS, IN WHOLE OR IN PART, WITHOUT THE EXPRESS WRITTEN PERMISSION OF VENTLINE. THE DOCUMENT IS TO BE RETURNED PROMPTLY TO VENTLINE AFTER HAVING SERVED THE PURPOSE FOR WHICH DELIVERED.

©1995 VENTLINE DIVISION, TOWING INDUSTRIES, INC.

All Rights Reserved, including the right to reproduce this document or any part thereof.



- NOTES:
1. UNLESS OTHERWISE SPECIFIED ALL WIRE IS 22 AWG.
 2. REF. DWG'S:
GENERATOR HARNESS= L7751-00
INTERNAL & SWITCH HARNESS= L7752-00
PCB= L5131-02
TEST HARNESS= L7753-00
TEST BOX= L8506-00
 3. ALL PIGTAILS TO BE SUPPLIED BY CUSTOMER.
 4. BEFORE PACKING, SECURE HARNESS WITH VD0169-00 TIE WRAP ON RIGHT SIDE POST.

| | | | | |
|-------------|-------|----------|-------------------|----------|
| PART NO. | REQ'D | MATERIAL | DESCRIPTION | DWG SIZE |
| BLANK SIZE | | | USED ON WINNEBAGO | |
| DRAWN | DATE | MATERIAL | SEE BOM PAGE 2 | |
| MPR 12/3/03 | | | | |
| CHECKED | DATE | NAME | SCALE: NONE | |
| MPR 12/3/03 | | | | |
| APPRO'D | DATE | | | |

FUNCTION DRAWING MONITOR PANEL

DWG. NO. LA1071-00

PAGE 1 OF 2

| LTR. | DESCRIPTION | DATE | CHG BY | CHK BY |
|------|--|---------|--------|--------|
| REL | RELEASED TO PURCHASING & PRODUCTION. ECN 16261 | 12/3/03 | MPR | MPR |
| A | SEE SHEET 2 ECN 16381 | 4-6-04 | R.J. | R.J. |
| A | SEE SHEET 2 ECN 16394 | 4-21-04 | R.J. | R.J. |

| | |
|------------|----------------------|
| FIRST USED | 05 D SEIRES |
| TITLE: | DO NOT SCALE DRAWING |
| SHEET 5 | PART NO 134940 |

DWG NO 134940

1 5/24/2004

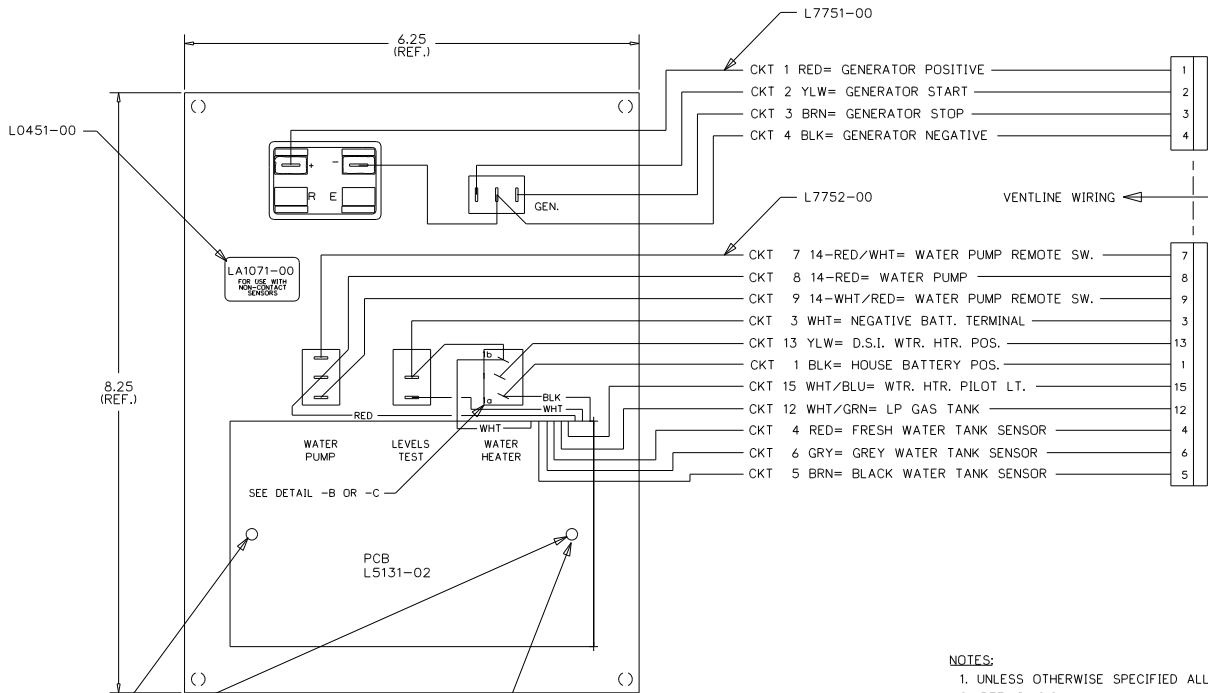
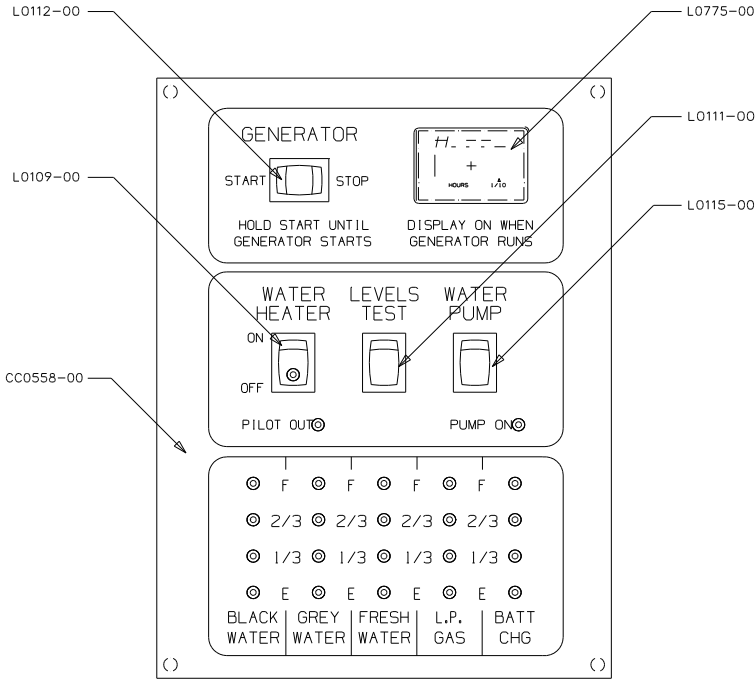
CONFIDENTIAL
THIS DOCUMENT, INCLUDING ALL INFORMATION CONTAINED HEREIN IS THE EXCLUSIVE AND CONFIDENTIAL PROPERTY OF VENTLINE DIVISION OF TOMLIN INDUSTRIES, INC. THE DOCUMENT AND INFORMATION ARE NOT TO BE COPIED, REPRODUCED OR DELIVERED TO OTHERS, IN WHOLE OR IN PART, WITHOUT THE EXPRESS WRITTEN PERMISSION OF VENTLINE. THE DOCUMENT IS TO BE RETURNED PROMPTLY TO VENTLINE AFTER HAVING SERVED THE PURPOSE FOR WHICH DELIVERED.
©1995 VENTLINE DIVISION, TOMLIN INDUSTRIES, INC.
All Rights Reserved, including the right to reproduce this document or any part thereof

LA1071-00
PAGE 2 OF 2

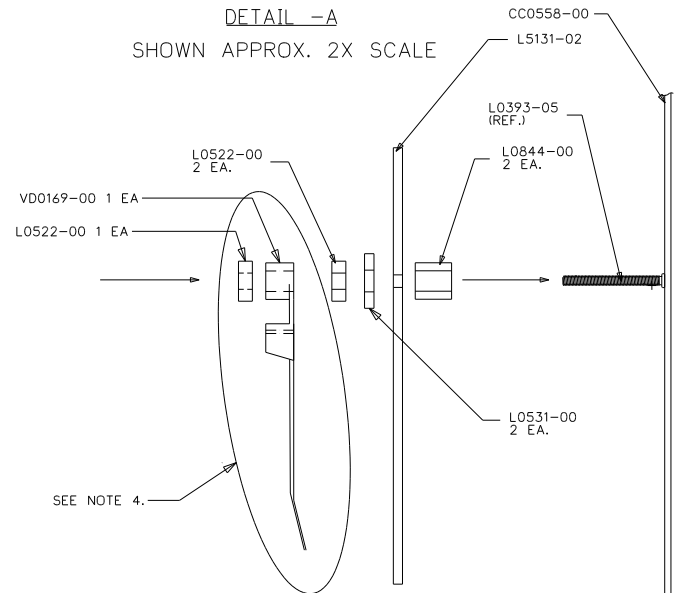
LA1071-00
FOR USE WITH
NON-CONTACT
SENSORS
(MFG DATE)

PRODUCT LABEL
PRINTING DETAIL
NO SCALE

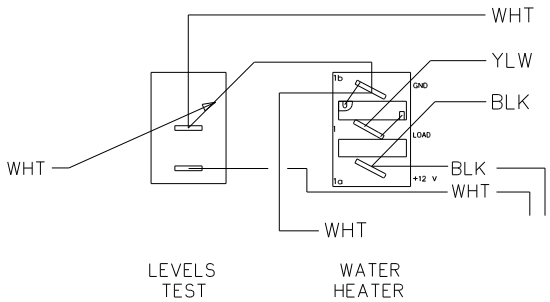
| LTR. | DESCRIPTION | DATE | CHK. BY | CHK. BY |
|------|--|---------|------------|------------|
| REL | RELEASED TO PURCHASING & PRODUCTION. ECN 16381 | 12/3/03 | MPH | MPR |
| A | ADDED LABEL DETAIL ECN 16391 | 4-6-04 | R.J.L | R.J.L |
| B | LS131-02 WAS LS118-02 ECN 16394 | 4-21-04 | R.J.L | R.J.L |



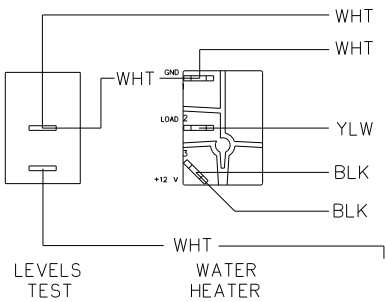
- NOTES:
- UNLESS OTHERWISE SPECIFIED ALL WIRE IS 22 AWG.
 - REF. DWG'S:
GENERATOR HARNESS= L7751-00
INTERNAL & SWITCH HARNESS= L7752-00
PCB= L5131-02
TEST HARNESS= L7753-00
TEST BOX= L8506-00
 - ALL PIGTAILS TO BE SUPPLIED BY CUSTOMER.
 - BEFORE PACKING, SECURE HARNESS WITH VD0169-00 TIE WRAP ON RIGHT SIDE POST.



DETAIL -B
FOR L0109-00 "MARQUARDT"
SHOWN APPROX. 2X SCALE



DETAIL -C
FOR L0109-00 "CARLINGSWITCH"
SHOWN APPROX. 2X SCALE



| PART NO. | REQ'D | MATERIAL | DESCRIPTION | DWG SIZE |
|--------------|-------|----------|-----------------------------------|----------|
| VD0169-00 | 1 | | TIE WRAP | |
| L7752-00 | 1 | | HARNESS, INTERNAL & SWITCH | |
| L7751-00 | 1 | | HARNESS, GENERATOR | |
| LS131-02 | 1 | | PCB | |
| L0775-00 | 1 | | HOBBS HOUR METER | |
| LO531-00 | 2 | | FIBER WASHER | |
| LO522-00 | 3 | | HEX NUT, 6-32 | |
| LO451-00 | 1 | | LABEL - SEE PRINTING DETAIL ABOVE | |
| LO844-00 | 2 | | PCB SPACER | |
| LO115-00 | 1 | | SWITCH, SPDT ON-ON, BLK | |
| LO112-00 | 1 | | SWITCH, SPDT (ON)-OFF-(ON), BLK | |
| LO111-00 | 1 | | SWITCH, SPST MOM. (ON)-OFF, BLK | |
| LO109-00 | 1 | | SWITCH, SPST ON-OFF, BLK, GRN LT. | |
| CC0558-00 | 1 | | SILKSCREENED CHASSIS | |
| BLANK | | USED ON | WINNEBAGO | |
| DRAWN | DATE | MATERIAL | SEE BOM PAGE 2 | |
| MPR 11/20/03 | | | | |
| CHECKED | DATE | NAME | | |
| MPR 11/20/03 | | | | |
| APP'D | DATE | | | |

FUNCTION DRAWING, MONITOR PANEL

SCALE: NONE

DWG. NO. PAGE 2 OF 2 LA1071-00

| | |
|------------|----------------------|
| FIRST USED | 05 D SEIRES |
| TITLE | DO NOT SCALE DRAWING |
| SHEET 6 | PART NO 134940 |

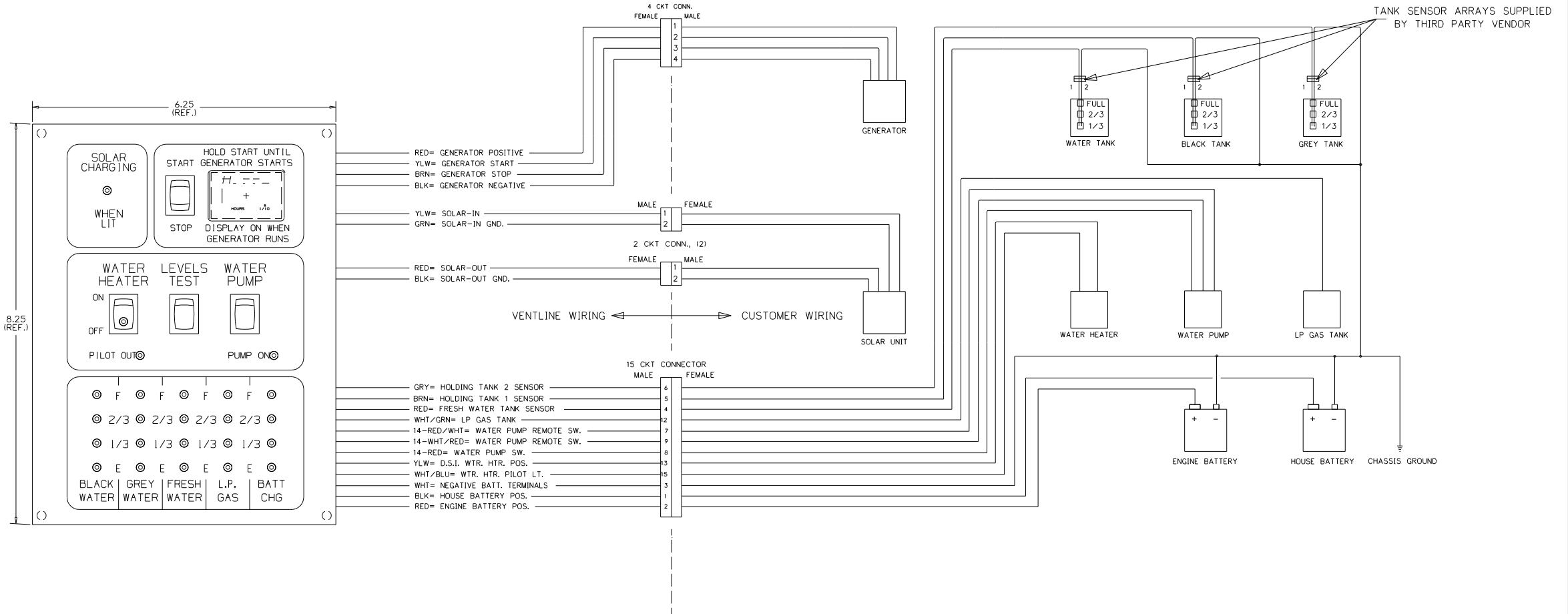
THIS DOCUMENT, INCLUDING ALL INFORMATION CONTAINED HEREIN, IS THE EXCLUSIVE AND CONFIDENTIAL PROPERTY OF VENTLINE DIVISION OF TOMKINS INDUSTRIES, INC. THE DOCUMENT AND INFORMATION ARE NOT TO BE COPIED, REPRODUCED OR DELIVERED TO OTHERS, IN WHOLE OR IN PART, WITHOUT THE EXPRESS WRITTEN PERMISSION OF VENTLINE. THE DOCUMENT IS TO BE RETURNED PROMPTLY TO VENTLINE AFTER HAVING SERVED THE PURPOSE FOR WHICH DELIVERED.

© 1995 VENTLINE DIVISION, TOMKINS INDUSTRIES, INC.

All Rights Reserved, including the right to reproduce this document or any part thereof.

LA1074-00
PAGE 1 OF 2

| LTR. | DESCRIPTION | DATE | DES. | CHK. |
|------|---|---------|------|------|
| REL. | RELEASED TO PURCHASING & PRODUCTION. ECN 16261 | 12/3/03 | MPR | MPR |
| A | SEE SHEET 2 ECN 16381 | 4-6-04 | R/L | R/L |
| B | LS131-02 WAS LS118-02 ECN 16394 | 4-21-04 | R/L | R/L |



- NOTES:
1. UNLESS OTHERWISE SPECIFIED ALL WIRE IS 22 AWG.
 2. REF. DWG.'S:
HARNESS, INTERNAL & SWITCH= L7752-00
HARNESS, GEN. INTERNAL & SWITCH= L7786-00
HARNESS, SOLAR LIGHT= L7722-00
PCB= LS131-02
HARNESS, TEST= L7753-00
TEST BOX= L8506-00
 3. ALL PIGTAILS TO BE SUPPLIED BY CUSTOMER.
 4. BEFORE PACKING, SECURE HARNESS WITH
VD0169-00 TIE WRAP ON RIGHT SIDE POST.

ENGLISH (TOLERANCE UNLESS SPECIFIED)
0 PL.:.040 1 PL.:.020
2 PL.:.010 3 PL.:.005
FRACTIONS 1/64

| PART NO. | REV'D | MATERIAL | DESCRIPTION | DWG SIZE |
|--------------|----------------|----------|-------------|----------|
| BLANK SIZE | | USED ON | WINNEBAGO | |
| DRAWN | DATE | MATERIAL | | |
| MPR 11/21/03 | SEE BOM PAGE 2 | | | |
| CHECKED | DATE | NAME | | |
| MPR 11/21/03 | | | | |
| APPR'D | DATE | | | |
| | | | | |

FUNCTION DRAWING, MONITOR PANEL

SCALE: NONE

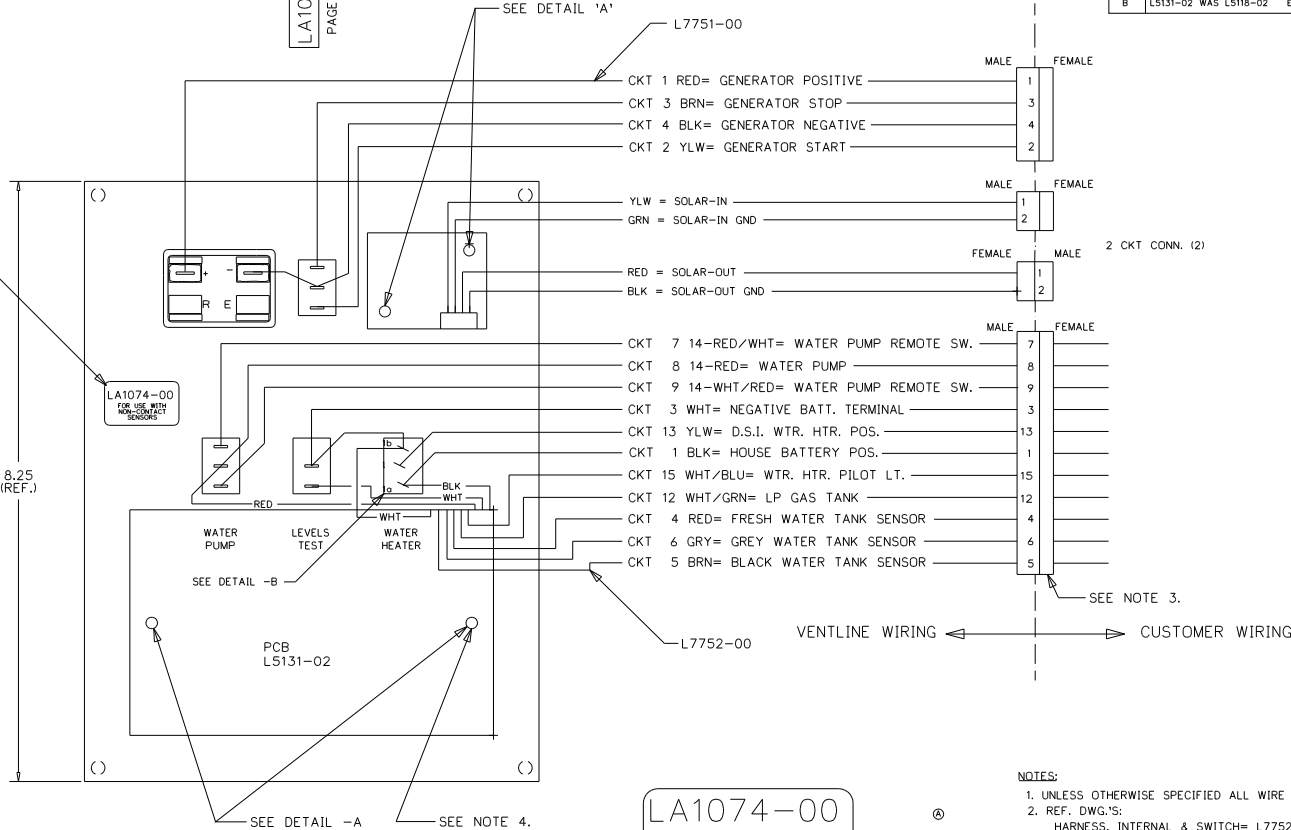
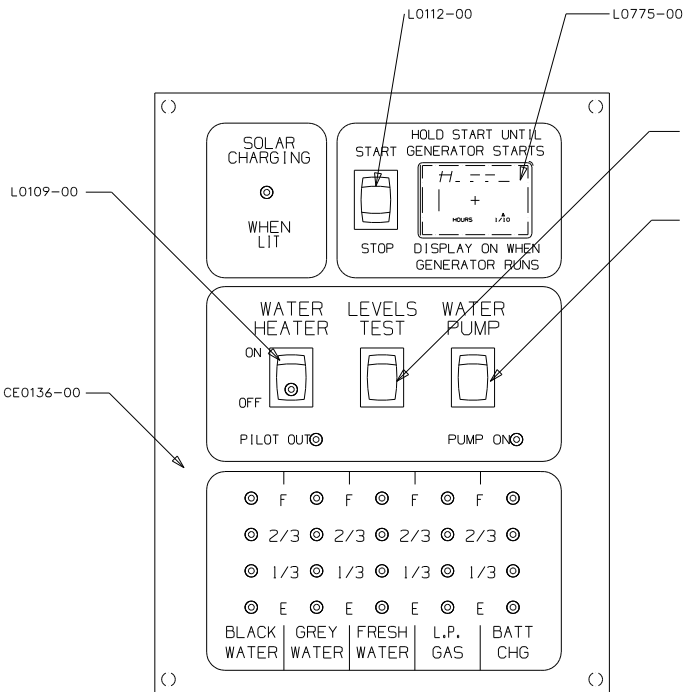
DWG. NO. LA1074-00 PAGE 1 OF 2

| | |
|------------|----------------------|
| FIRST USED | 05 D SERIES |
| TITLE | DO NOT SCALE DRAWING |
| SHEET 9 | PART NO 134940 |
| | 1 5/24/2004 |

CONFIDENTIAL
THIS DOCUMENT, INCLUDING ALL INFORMATION CONTAINED HEREIN, IS THE EXCLUSIVE AND CONFIDENTIAL PROPERTY OF VENTLINE DIVISION OF TOWING INDUSTRIES, INC. THE DOCUMENT AND INFORMATION ARE NOT TO BE COPIED, REPRODUCED OR DELIVERED TO OTHERS, IN WHOLE OR IN PART, WITHOUT THE EXPRESS WRITTEN PERMISSION OF VENTLINE. THE DOCUMENT IS TO BE RETURNED PROMPTLY TO VENTLINE AFTER HAVING SERVED THE PURPOSE FOR WHICH DELIVERED.
©1995 VENTLINE DIVISION, TOWING INDUSTRIES, INC.
All Rights Reserved, including the right to reproduce this document or any part thereof.

| LTR. | DESCRIPTION | DATE | CHK. BY | CHK. BY |
|------|-------------------------------------|---------|---------|---------|
| REL. | RELEASED TO PURCHASING & PRODUCTION | 12/3/03 | MPR | MPR |
| A | ADDED LABEL DETAIL ECN 16381 | 4-6-04 | R/L | R/L |
| B | L5131-02 WAS L5118-02 ECN 16394 | 4-21-04 | R/L | R/L |

LA1074-00
PAGE 2 OF 2



LA1074-00
FOR USE WITH
NON-CONTACT
SENSORS
(MFG DATE)

PRODUCT LABEL
PRINTING DETAIL
NO SCALE

- NOTES:
1. UNLESS OTHERWISE SPECIFIED ALL WIRE IS 22 AWG.
 2. REF. DWG.'S:
HARNESS, INTERNAL & SWITCH= L7752-00
HARNESS, GEN. INTERNAL & SWITCH= L7786-00
HARNESS, SOLAR LIGHT= L7722-00
PCB= L5131-02
HARNESS, TEST= L7753-00
TEST BOX= L8506-00
 3. ALL PIGTAILS TO BE SUPPLIED BY CUSTOMER.
 4. BEFORE PACKING, SECURE HARNESS WITH
VD0169-00 TIE WRAP ON RIGHT SIDE POST.

| | | |
|-----------|---|-----------------------------------|
| VD0169-00 | 1 | TIE WRAP |
| L7752-00 | 1 | HARNESS, INTERNAL & SWITCH |
| L7751-00 | 1 | HARNESS, GENERATOR |
| L7722-00 | 1 | SOLAR LIGHT HARNESS |
| L5121-01 | 1 | SOLAR LIGHT PCB |
| L5131-02 | 1 | PCB |
| L0775-00 | 1 | HOBBS HOUR METER |
| L0531-00 | 4 | FIBER WASHER |
| L0522-00 | 5 | HEX NUT, 6-32 |
| L0451-00 | 1 | LABEL |
| L0844-00 | 4 | PCB SPACER |
| L0115-00 | 1 | SWITCH, SPDT ON-ON, BLK |
| L0112-00 | 1 | SWITCH, SPDT (ON)-OFF-(ON), BLK |
| L0111-00 | 1 | SWITCH, SPST MOM. (ON)-OFF, BLK |
| L0109-00 | 1 | SWITCH, SPST ON-OFF, BLK, GRN LT. |
| CE0136-00 | 1 | SILKSCREENED CHASSIS |

| PART NO. | REQ'D | MATERIAL | DESCRIPTION | DWG SIZE |
|--------------|-------|----------|-------------------|----------|
| BLANK SIZE | | | USED ON WINNEBAGO | |
| DRAWN | DATE | MATERIAL | SEE BOM | |
| MPR 11/21/03 | | | | |
| CHECKED | DATE | NAME | | |
| MPR 11/21/03 | | | | |
| APPROV'D | DATE | | | |

ENGLISH (TOLERANCE UNLESS SPECIFIED)
0 PL.:.040 1 PL.:.020
2 PL.:.010 3 PL.:.005
FRACTIONS 1/64

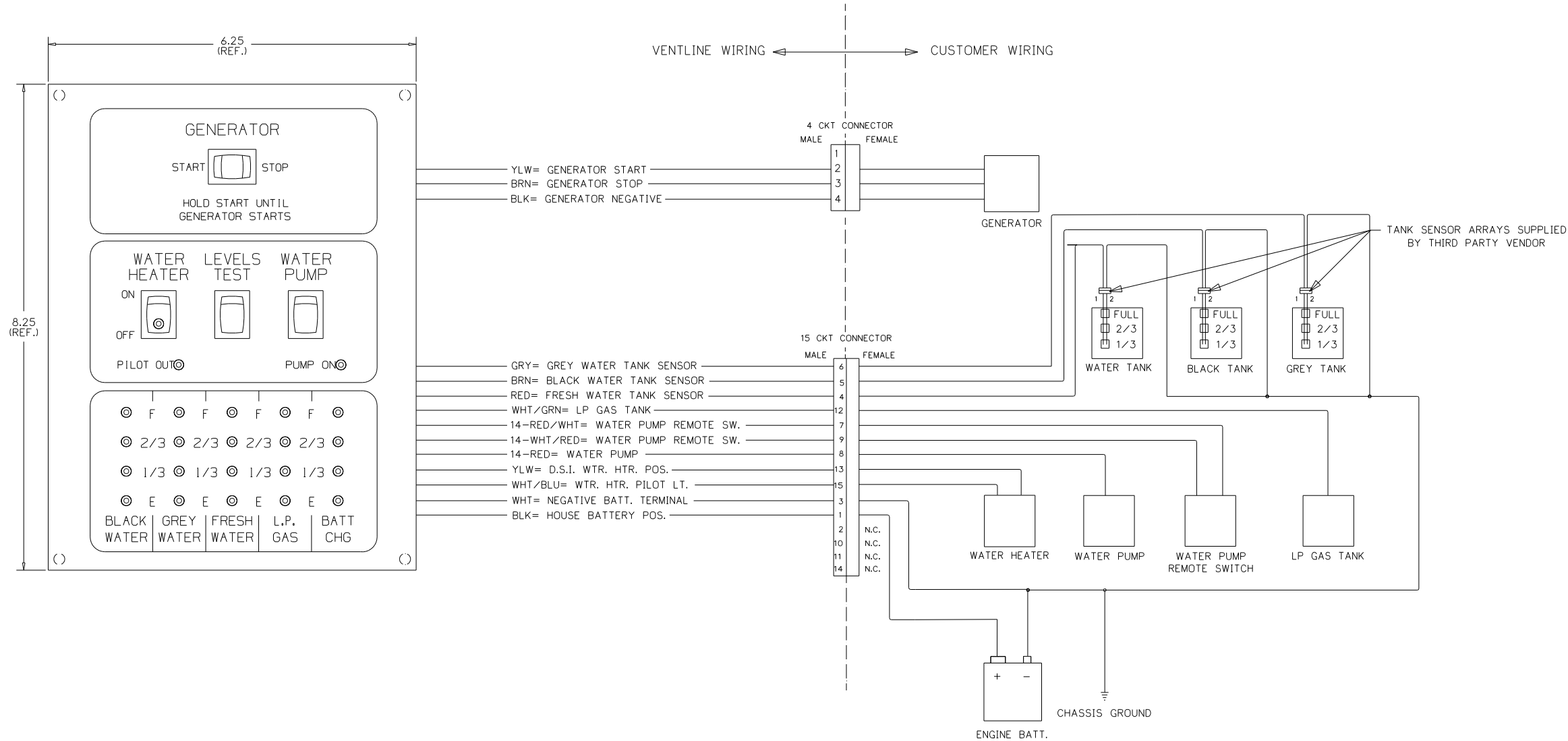
FUNCTION DRAWING,
MONITOR PANEL
LA1074-00

| | |
|------------|----------------------|
| FIRST USED | 05 D SERIES |
| TITLE | DO NOT SCALE DRAWING |
| SHEET 10 | PART NO 134940 |

CONFIDENTIAL
THIS DOCUMENT, INCLUDING ALL INFORMATION CONTAINED HEREIN, IS THE EXCLUSIVE AND CONFIDENTIAL PROPERTY OF VENTLINE DIVISION OF TOMKINS INDUSTRIES, INC. THE DOCUMENT AND INFORMATION ARE NOT TO BE COPIED, REPRODUCED OR DELIVERED TO OTHERS, IN WHOLE OR IN PART, WITHOUT THE EXPRESS WRITTEN PERMISSION OF VENTLINE. THE DOCUMENT IS TO BE RETURNED PROMPTLY TO VENTLINE AFTER HAVING SERVED THE PURPOSE FOR WHICH DELIVERED.
©1995 VENTLINE DIVISION, TOMKINS INDUSTRIES, INC.
All Rights Reserved, including the right to reproduce this document or any part thereof

LA1075-00
PAGE 1 OF 2

| LTR. | DESCRIPTION | DATE | CHK. BY | CHK. BY |
|------|---|---------|---------|---------|
| REL | RELEASED TO PURCHASING AND PRODUCTION ECN 16261 | 12/3/03 | MPR | MPR |
| A | SEE SHEET 2 ECN 16381 | 4-6-04 | R/L | R/L |
| B | L5131-02 WAS L5118-02 ECN 16394 | 4-21-04 | R/L | R/L |



- NOTES:
- UNLESS OTHERWISE SPECIFIED ALL WIRE IS 22 AWG.
 - REF. DWG.'S:
HARNESS, INTERNAL & SWITCH= L7752-00
HARNESS, GEN. INTERNAL & SWITCH= L7786-00
HARNESS, SOLAR LIGHT= L7722-00
PCB= L5131-02
HARNESS, TEST= L7753-00
TEST BOX= L8506-00
 - ALL PIGTAILS TO BE SUPPLIED BY CUSTOMER.
 - BEFORE PACKING, SECURE HARNESS WITH VD0169-00 TIE WRAP ON RIGHT SIDE POST.

ENGLISH (TOLERANCE UNLESS SPECIFIED)
0 PL.± .040 1 PL.± .020
2 PL.± .010 3 PL.± .005
FRACTIONS ± 1/64

| PART NO. | REV'D | MATERIAL | DESCRIPTION | DWG SIZE |
|--------------|-------|---------------------------------|--------------------|-------------|
| BLANK | | | USED ON WINNEBAGO | |
| SIZE | | | | |
| DRAWN | DATE | MATERIAL | SEE BOM PAGE 2 | |
| MPR 11/21/03 | | | | |
| CHECKED | DATE | NAME | SCALE: NONE | |
| MPR 11/21/03 | | | | |
| APPV'D | DATE | FUNCTION DRAWING, MONITOR PANEL | DWG. NO. LA1075-00 | PAGE 1 OF 2 |

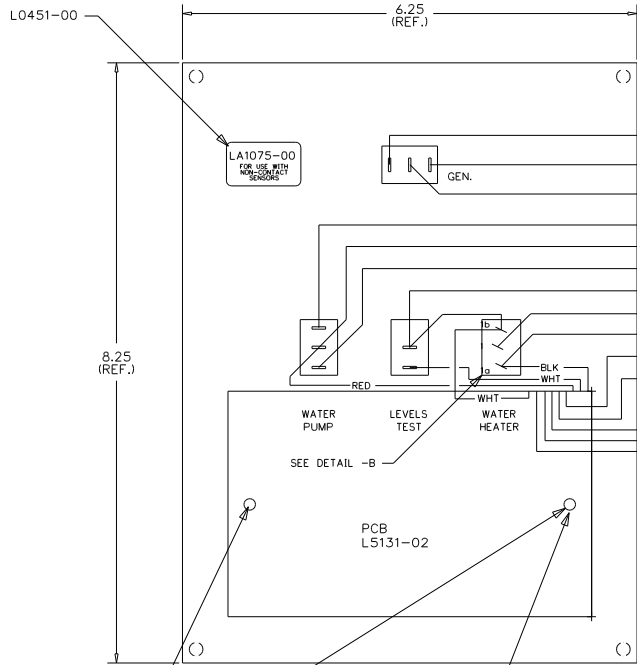
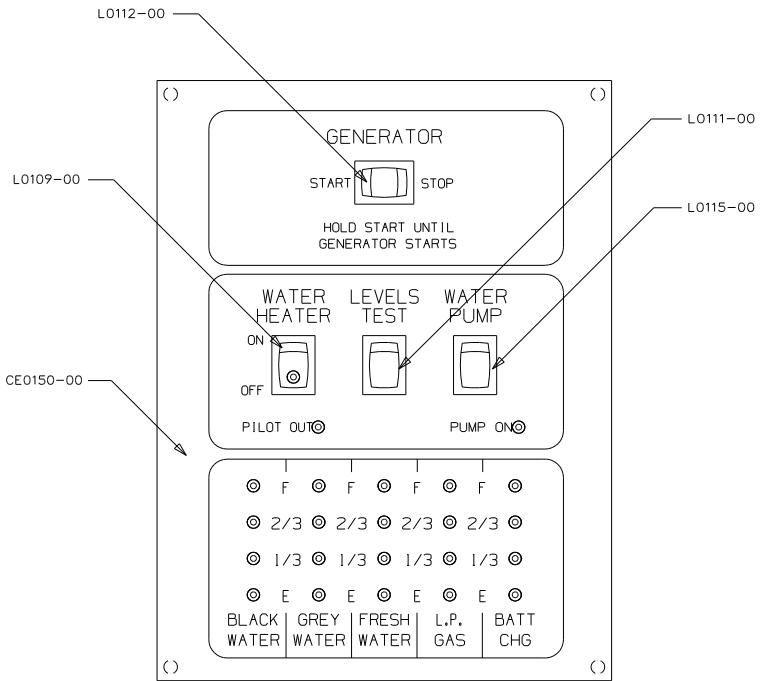
| | |
|------------|----------------------|
| FIRST USED | 06 500 SERIES |
| TITLE | DO NOT SCALE DRAWING |
| SHEET 11 | PART NO 134940 |

CONFIDENTIAL
THIS DOCUMENT, INCLUDING ALL INFORMATION CONTAINED HEREIN, IS THE EXCLUSIVE AND CONFIDENTIAL PROPERTY OF VENTLINE DIVISION OF TOWING INDUSTRIES, INC. THE DOCUMENT AND INFORMATION ARE NOT TO BE COPIED, REPRODUCED OR DELIVERED TO OTHERS, IN WHOLE OR IN PART, WITHOUT THE EXPRESS WRITTEN PERMISSION OF VENTLINE. THE DOCUMENT IS TO BE RETURNED PROMPTLY TO VENTLINE AFTER HAVING SERVED THE PURPOSE FOR WHICH DELIVERED.
©1995 VENTLINE DIVISION, TOWING INDUSTRIES, INC.
All Rights Reserved, including the right to reproduce this document or any part thereof.

DWG NO 134940

LA1075-00
PAGE 2 OF 2

| LTR. | DESCRIPTION | DATE | CHK'D | CHK'D |
|------|---|---------|-------|-------|
| REL | RELEASED TO PURCHASING AND PRODUCTION ECN 16261 | 12/3/03 | MPR | MPR |
| A | ADDED LABEL DETAIL ECN 16381 | 4-6-04 | R.J.L | R.J.L |
| B | L5131-02 WAS L5118-02 ECN 16394 | 4-21-04 | R.J.L | R.J.L |



L7832-00

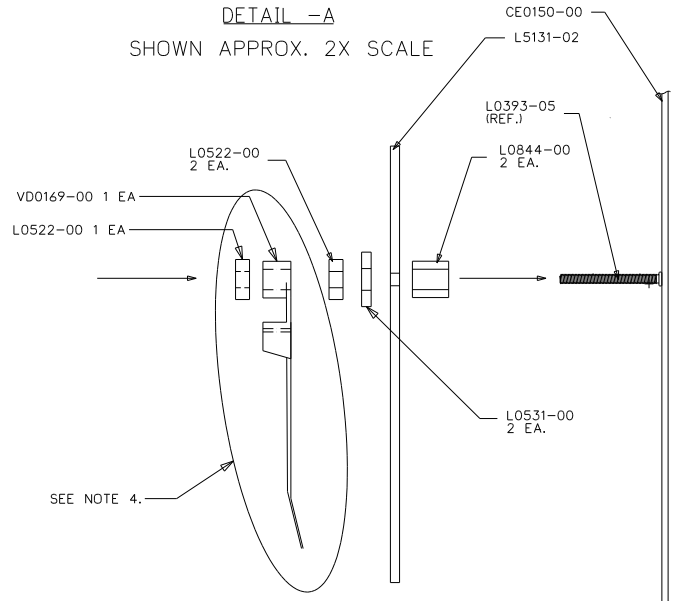
L7752-00

- CKT 1 = NOT USED
- CKT 2 YLW= GENERATOR START
- CKT 3 BRN= GENERATOR STOP
- CKT 4 BLK= GENERATOR NEGATIVE

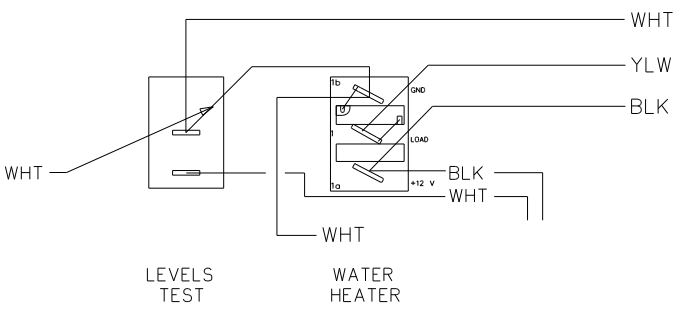
- CKT 7 14-RED/WHT= WATER PUMP REMOTE SW.
- CKT 8 14-RED= WATER PUMP
- CKT 9 14-WHT/RED= WATER PUMP REMOTE SW.
- CKT 3 WHT= NEGATIVE BATT. TERMINAL
- CKT 13 YLW= D.S.I. WTR. HTR. POS.
- CKT 1 BLK= HOUSE BATTERY POS.
- CKT 15 WHT/BLU= WTR. HTR. PILOT LT.
- CKT 12 WHT/GRN= LP GAS TANK
- CKT 4 RED= FRESH WATER TANK SENSOR
- CKT 6 GRY= GREY WATER TANK SENSOR
- CKT 5 BRN= BLACK WATER TANK SENSOR

VENTLINE WIRING ← → CUSTOMER WIRING

DETAIL -A
SHOWN APPROX. 2X SCALE



DETAIL -B
SHOWN APPROX. 2X SCALE



LA1075-00
FOR USE WITH
NON-CONTACT
SENSORS
(MFG DATE)

PRODUCT LABEL
PRINTING DETAIL
NO SCALE

- NOTES:
- UNLESS OTHERWISE SPECIFIED ALL WIRE IS 22 AWG.
 - REF. DWG.'S:
HARNESS, INTERNAL & SWITCH= L7785-01, -02
HARNESS, GEN. INTERNAL & SWITCH= L7786-00
PCB= L5131-02
HARNESS, TEST= L8012-00
TEST BOX= L8506-00
 - ALL PIGTAILS TO BE SUPPLIED BY CUSTOMER.
 - BEFORE PACKING, SECURE HARNESS WITH V00169-00 TIE WRAP ON RIGHT SIDE POST.

| | | | |
|-----------|---|-----------------------------------|--|
| V00169-00 | 1 | TIE WRAP | |
| L7752-00 | 1 | HARNESS, INTERNAL & SWITCH | |
| L7832-00 | 1 | HARNESS, GENERATOR | |
| L5131-02 | 1 | PCB | |
| L0531-00 | 2 | FIBER WASHER | |
| L0522-00 | 3 | HEX NUT, 6-32 | |
| L0451-00 | 1 | LABEL | |
| L0844-00 | 2 | PCB SPACER | |
| L0115-00 | 1 | SWITCH, SPDT ON-ON, BLK | |
| L0112-00 | 1 | SWITCH, SPDT (ON-OFF-OFF), BLK | |
| L0111-00 | 1 | SWITCH, SPST MOM. (ON-OFF), BLK | |
| L0109-00 | 1 | SWITCH, SPST ON-OFF, BLK, GRN LT. | |
| CE0150-00 | 1 | SILKSCREENED CHASSIS | |

| PART NO. | REV'D | MATERIAL | DESCRIPTION | DWG SIZE |
|-----------|-------|----------------|---------------------------------|----------|
| LA1075-00 | 1 | WIRING HARNESS | FUNCTION DRAWING, MONITOR PANEL | 134940 |

| | |
|------------------------|----------------|
| FIRST USED | |
| 06 500 SERIES | |
| DO NOT SCALE DRAWING | |
| TITLE: PANEL - MONITOR | |
| SHEET 12 | PART NO 134940 |

1 5/24/2004