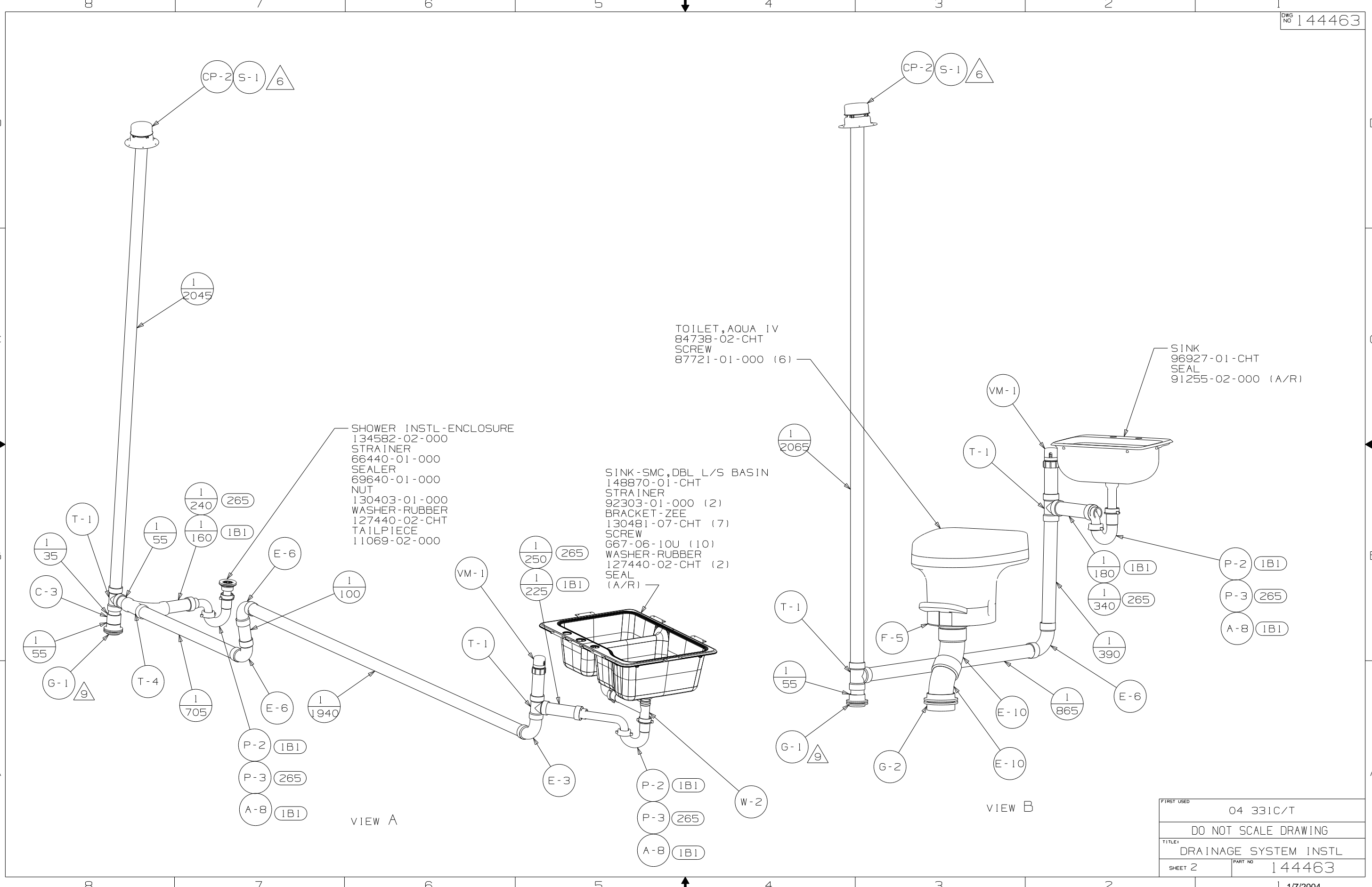


- NOTES:
9. SECURE VENT TUBES TO FLOOR WITH CLAMP 62401-02-000 (2) SCREW G67-10-12B (2) AND BRACKET 136878-01-CHT (2).
 8. WRAP PAD AROUND ON THE SIDES OF THE TANK.
 7. SEE WIRING INSTL-BODY, 12V FOR ELECTRICAL CONNECTION.
 6. VENT PIPE MUST PROJECT 51 MIN AND 64 MAX ABOVE ROOF FOR PROPER FIT AND FUNCTION.
 5. SEAL AROUND SHOWER WITH SILICONE.
 4. ALL EXTERIOR OPENINGS AROUND PIPE TO BE SEALED WITH 131264-03.
 3. ALL PIPE AND FITTINGS TO BE ASSEMBLED WITH SOLVENT 4020-01-000.
 2. SLOPE OF TRAP ARM MUST BE 6 PER 305 mm.
 1. SLOPE OF HORIZONTAL PIPING TO BE MIN 3 PER 305 mm.

- (1B1) CODES/STANDARDS-USA
- (265) CODES/STANDARDS-CSA/CMVSS
- (23T) DRAINAGE SYSTEM-HEATED

| | | | |
|------------------------------|------------|---|--|
| WINNEBAGO | | COPYRIGHT 2004 WINNEBAGO INDUSTRIES, INC. | |
| D/FR | ORIG. DATE | ALL DIMENSIONS ARE IN MILLIMETERS | |
| CHKR | | | |
| P.E. | | | |
| M.E. | FIRST USED | 04 331C/T | |
| DSNR | | | |
| UNSPECIFIED TOLERANCES ARE: | | MATERIAL: | |
| WHOLE DIM (X) | : 7 | | |
| ONE-PLACE (X.X) | : | | |
| TWO-PLACE (X.XX) | : | | |
| ANGLE | : | | |
| THIRD ANGLE PROJECTION | | | |
| DO NOT SCALE DRAWING | | | |
| TITLE: DRAINAGE SYSTEM INSTL | | | |
| SHEET 1 OF 3 | PART NO | 144463 | |

FOR
DRAINAGE
CALLOUTS
SEE DWG NO
116229-01-000



TOILET, AQUA IV
 84738-02-CHT
 SCREW
 87721-01-000 (6)

SINK
 96927-01-CHT
 SEAL
 91255-02-000 (A/R)

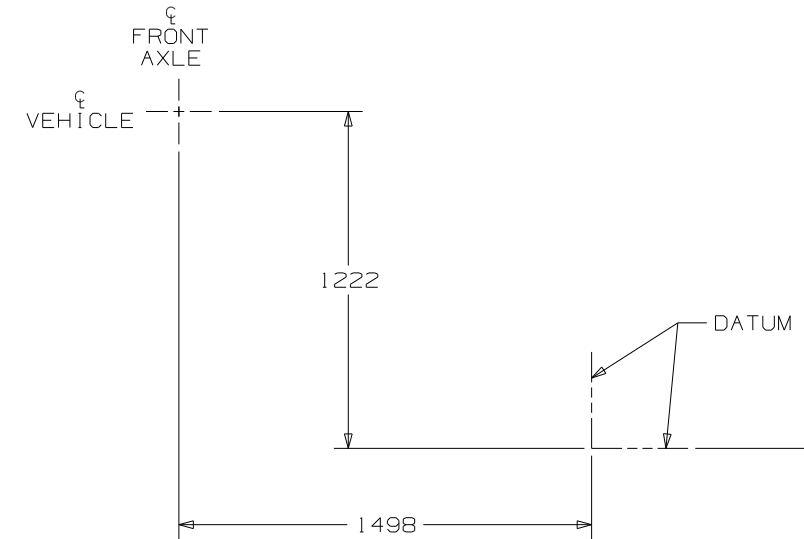
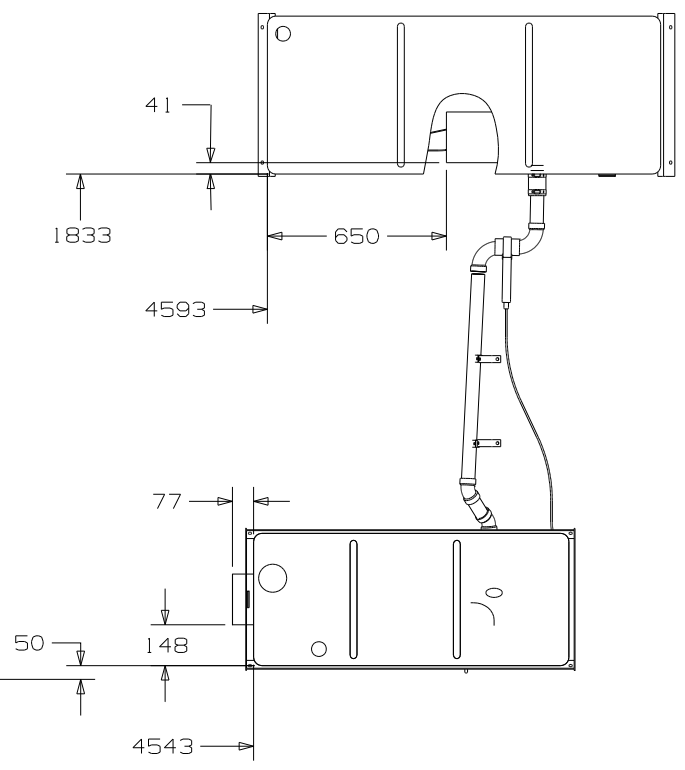
SHOWER INSTL-ENCLOSURE
 134582-02-000
 STRAINER
 66440-01-000
 SEALER
 69640-01-000
 NUT
 130403-01-000
 WASHER-RUBBER
 127440-02-CHT
 TAILPIECE
 11069-02-000

SINK-SMC, DBL L/S BASIN
 148870-01-CHT
 STRAINER
 92303-01-000 (2)
 BRACKET-ZEE
 130481-07-CHT (7)
 SCREW
 G67-06-10U (10)
 WASHER-RUBBER
 127440-02-CHT (2)
 SEAL
 (A/R)

VIEW A

VIEW B

| | |
|------------|----------------------|
| FIRST USED | 04 331C/T |
| TITLE | DO NOT SCALE DRAWING |
| SHEET 2 | PART NO 144463 |
| 1 17/2004 | |



VIEW C

- CRADLE ASM
141451-01-CHT
- BOLT
65115-03-000 (4)
- NUT
D39-05-00B (4)
- WASHER
E13-16-00B (4)

- HANGER-STRAP
140220-04-CHT (2)
- BOLT
C18-05-40A (2)
- NUT
D39-005-00B (2)

- CABLE - VALVE, REMOTE
62421-05-000

- HOLDER-RING
141443-02-CHT (2)
- BOLT
C12-05-16B (2)
- NUT
D12-05-00B (2)
- NUT
D39-05-00B (3)
- BOLT
C18-05-40A (3)

- PAD-HEATER, ELBOW
133972-03-000

- CRADLE ASM
137609-02-CHT
- BOLT
C18-05-40A (4)
- NUT
D39-05-00B (4)
- WASHER
E13-16-00B (4)

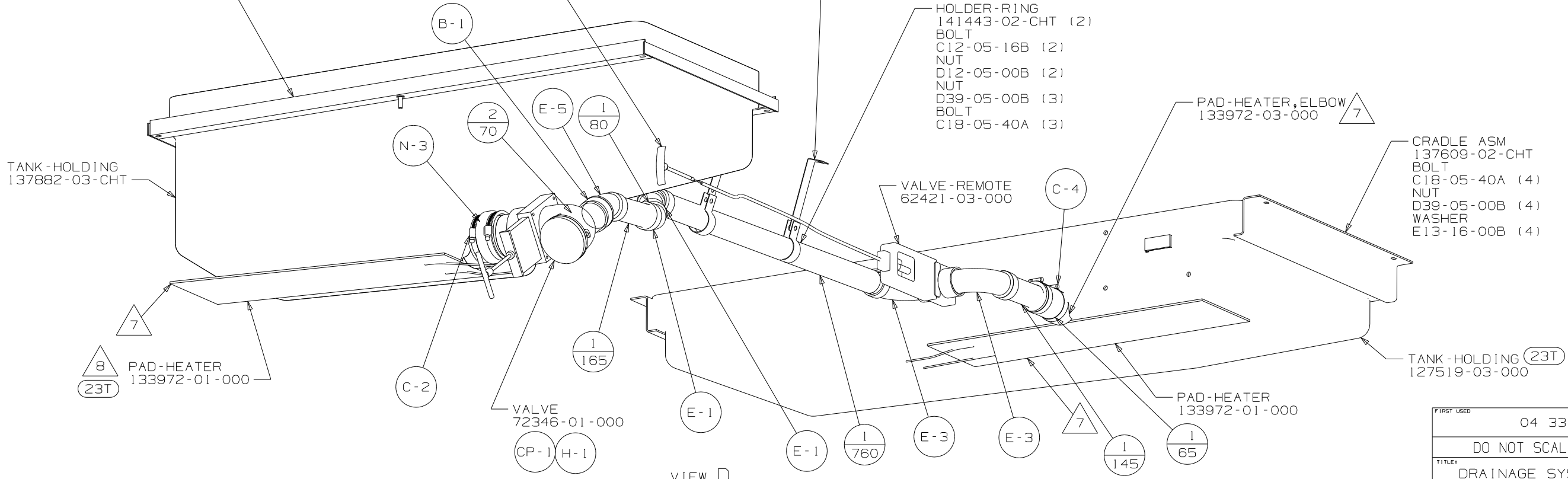
- TANK - HOLDING
137882-03-CHT

- TANK - HOLDING (23T)
127519-03-000

- PAD-HEATER
133972-01-000

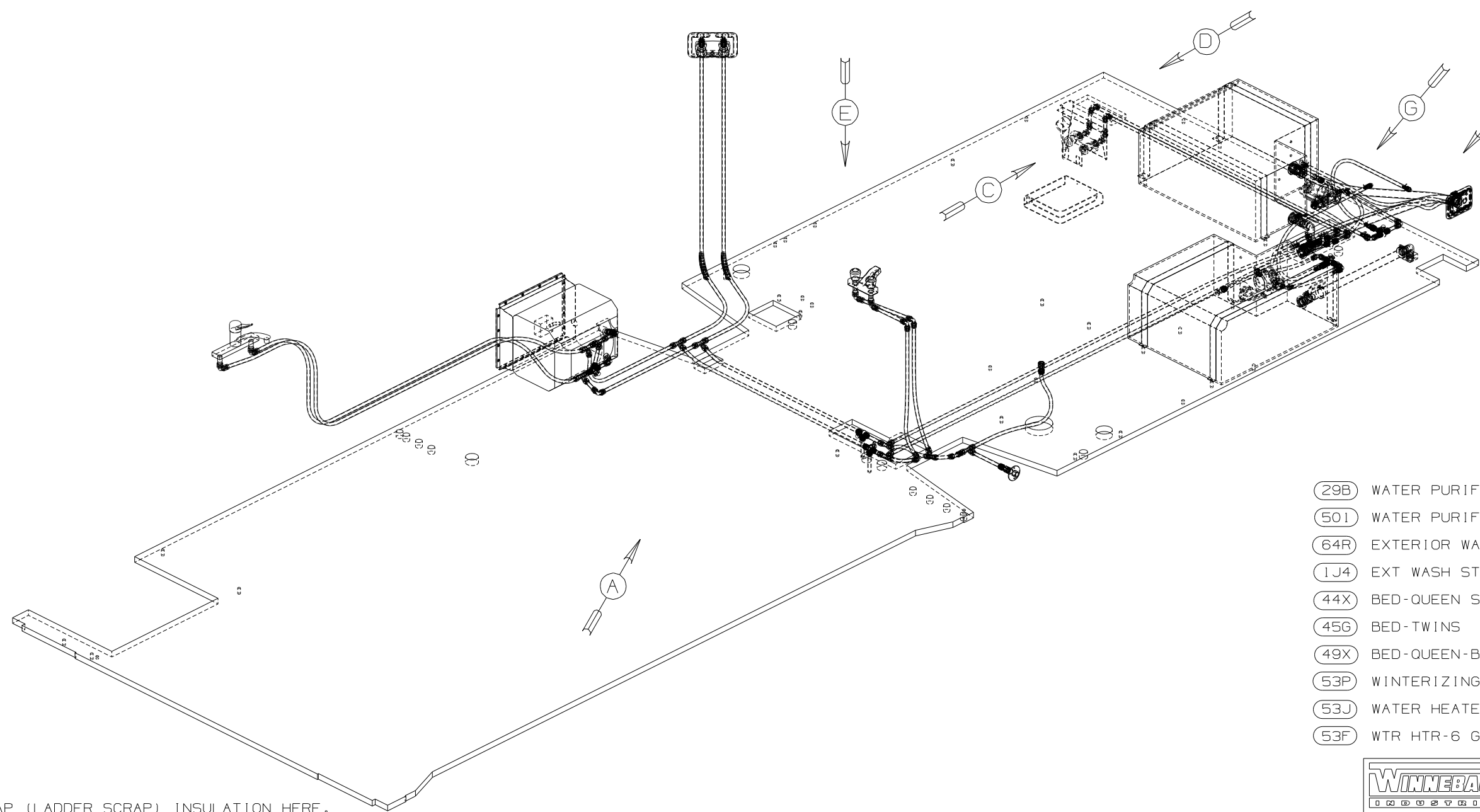
- PAD-HEATER
133972-01-000

- VALVE
72346-01-000



VIEW D

| | |
|----------------------|-----------------------|
| FIRST USED | 04 331C/T |
| DO NOT SCALE DRAWING | |
| TITLE | DRAINAGE SYSTEM INSTL |
| SHEET 3 | PART NO 144463 |

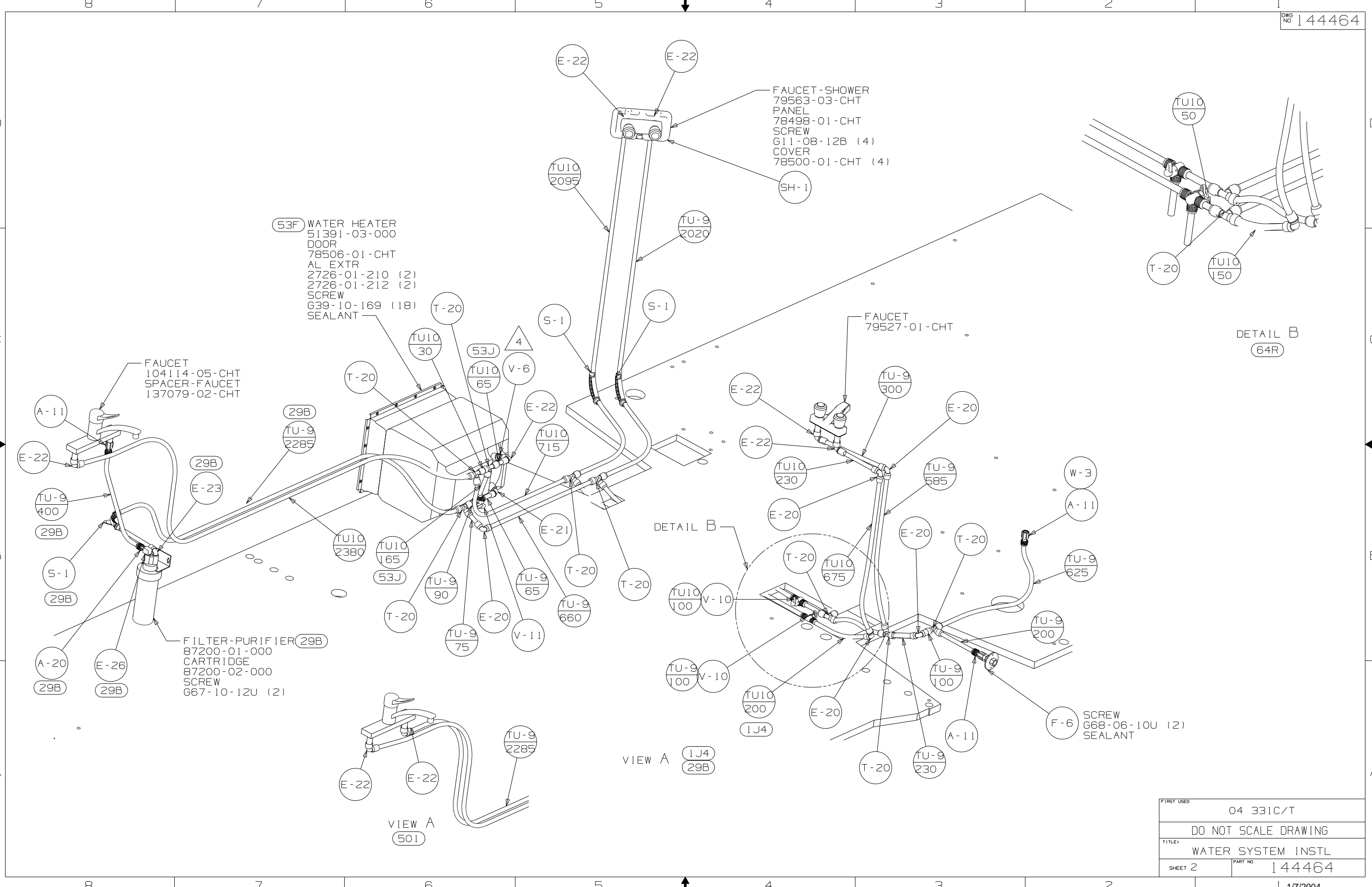


- (29B) WATER PURIFIER
- (50I) WATER PURIFIER-W/O
- (64R) EXTERIOR WASH STATION
- (1J4) EXT WASH STATION-WITHOUT
- (44X) BED-QUEEN SIDEWALL
- (45G) BED-TWINS
- (49X) BED-QUEEN-BACKWALL
- (53P) WINTERIZING VALVE, MANUAL
- (53J) WATER HEATER BY-PASS-VALVE
- (53F) WTR HTR-6 GAL ELEC IGN

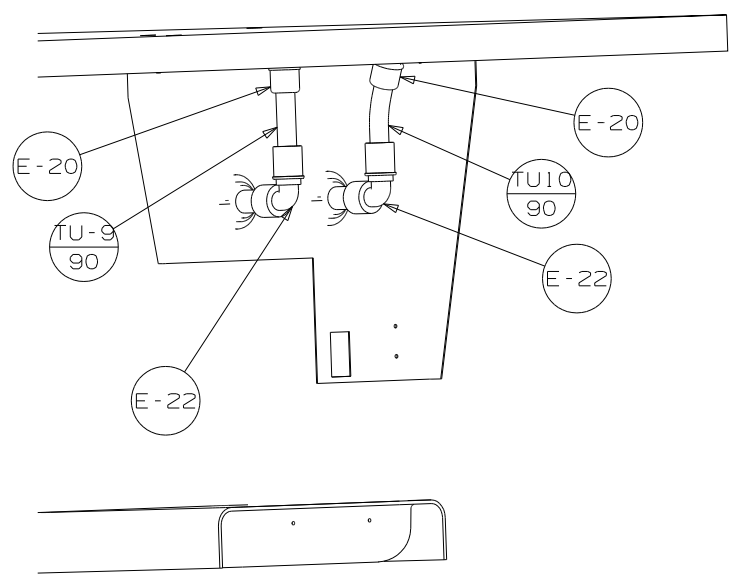
- NOTES:
- 7. ADD PIPE WRAP (LADDER SCRAP) INSULATION HERE.
 - 6. ANTI-RATTLE CLAMP 10495-01-000, SCREW G67-10-12B.
 - 5. ADD TEFLON TAPE 10405-01-000 TO FITTING.
 - 4. ADD TEFLON TAPE 10405-02-000 TO FITTING.
3. ALL TUBING TO BE SECURED AT 1200 INTERVALS MAXIMUM WITH CLAMP 10495-01-000 OR CLIP 9151-01-000 AND SCREWE G67-10-12B.
 2. TUBING TO BE INSTALLED WITH SUFFICIENT SLOPE TO PROVIDE DRAINAGE TO NEAREST VALVE.
 1. PLASTIC FITTINGS TO BE SEALED WITH SEALANT 94456-01-000.

| | | | |
|-----------------------------|------------|---|--|
| WINNEBAGO | | COPYRIGHT 2004 WINNEBAGO INDUSTRIES, INC. | |
| DFTR | ORIG. DATE | ALL DIMENSIONS ARE IN MILLIMETERS | |
| CHKR | | FIRST USED | |
| P.E. | | 04 331C/T | |
| M.E. | | | |
| DSNR | | | |
| UNSPECIFIED TOLERANCES ARE: | | MATERIAL: | |
| WHOLE DIM (X) | : 3 | | |
| ONE-PLACE (X.X) | : | | |
| TWO-PLACE (X.XX) | : | | |
| ANGLE | : | | |
| THIRD ANGLE PROJECTION | | | |
| DO NOT SCALE DRAWING | | | |
| TITLE: WATER SYSTEM INSTL | | | |
| SHEET 1 OF 5 | PART NO | 144464 | |
| REF:141102 1/17/2004 | | | |

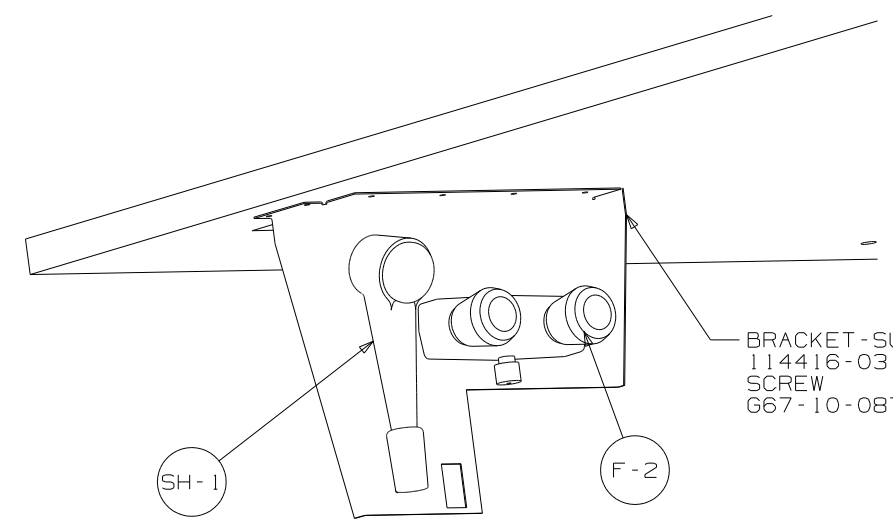
(X-X)
FOR
WATER
CALLOUTS
SEE DWG NO
116230-01-000



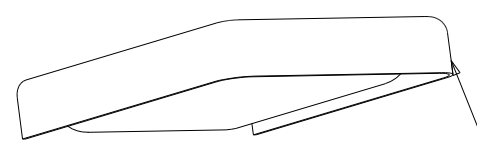
| | |
|------------|----------------------|
| FIRST USED | 04 331C/T |
| TITLE | DO NOT SCALE DRAWING |
| SHEET 2 | PART NO 144464 |
| | 1 17/2004 |



VIEW D
64R

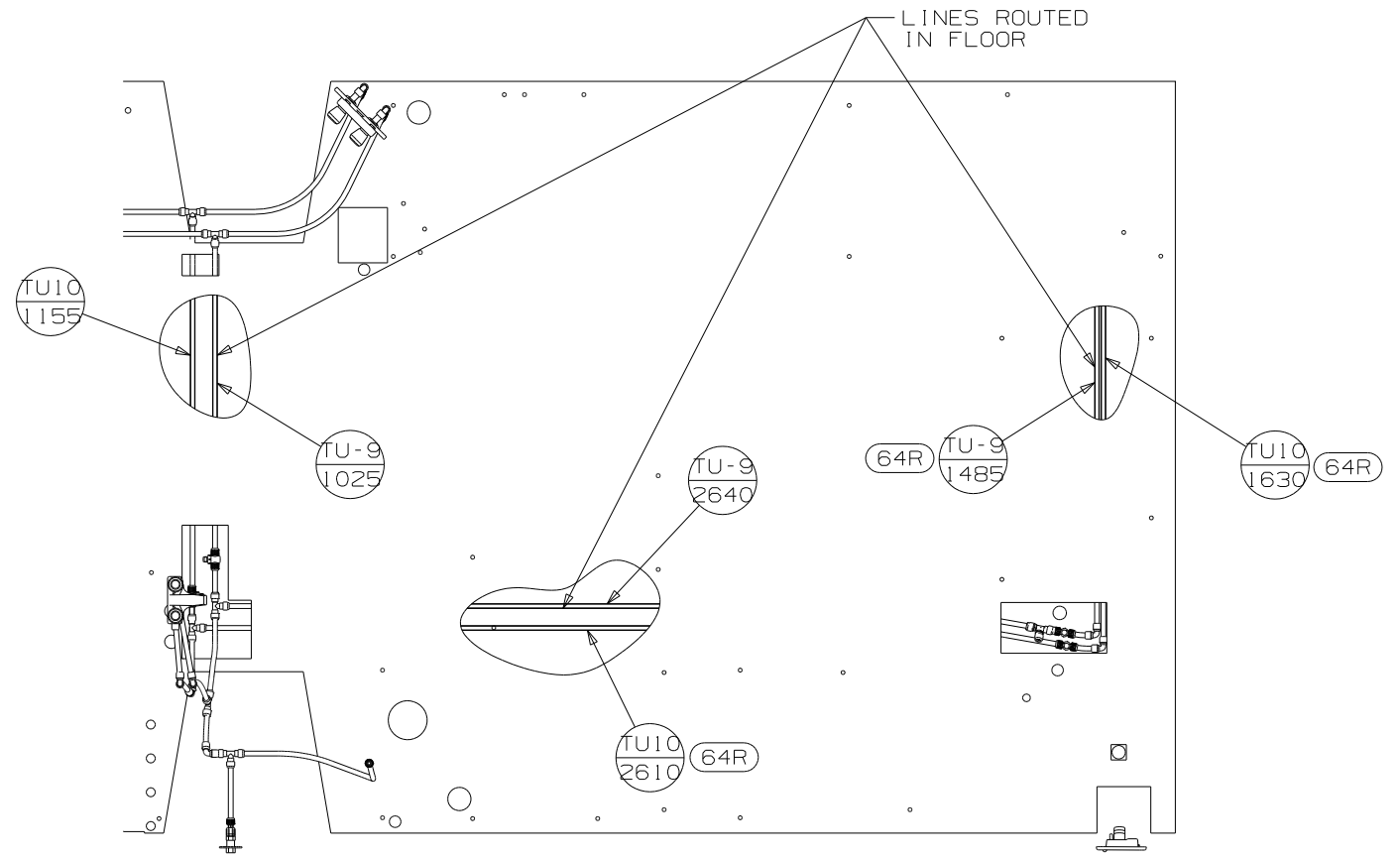


BRACKET-SUPPORT, FAUCET
114416-03-CHT
SCREW
G67-10-08T (6)



VIEW C
64R

PAN-DRIP, EXTERIOR SHOWER
114293-01-CHT
SCREW
G67-10-08U (2)

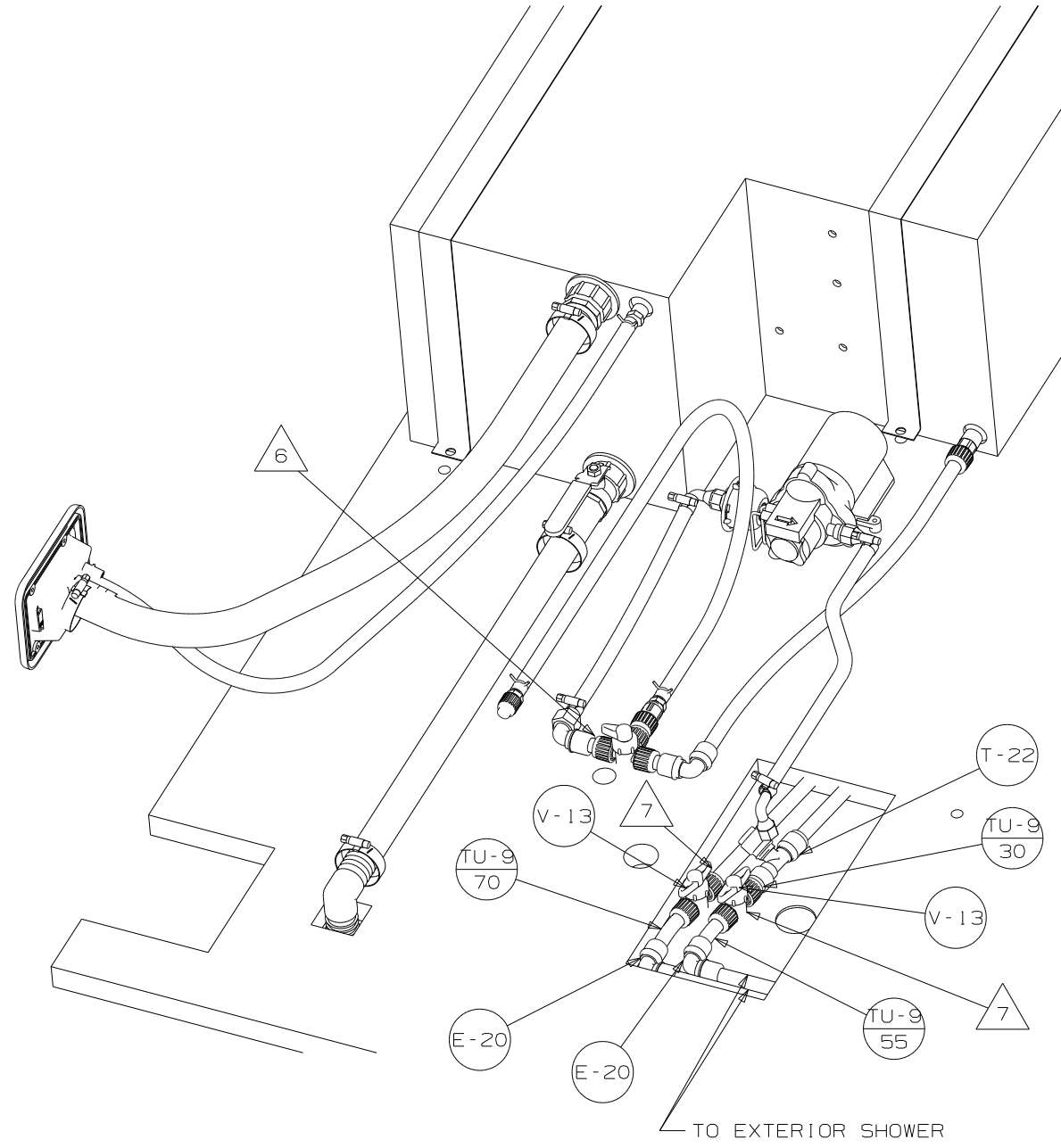
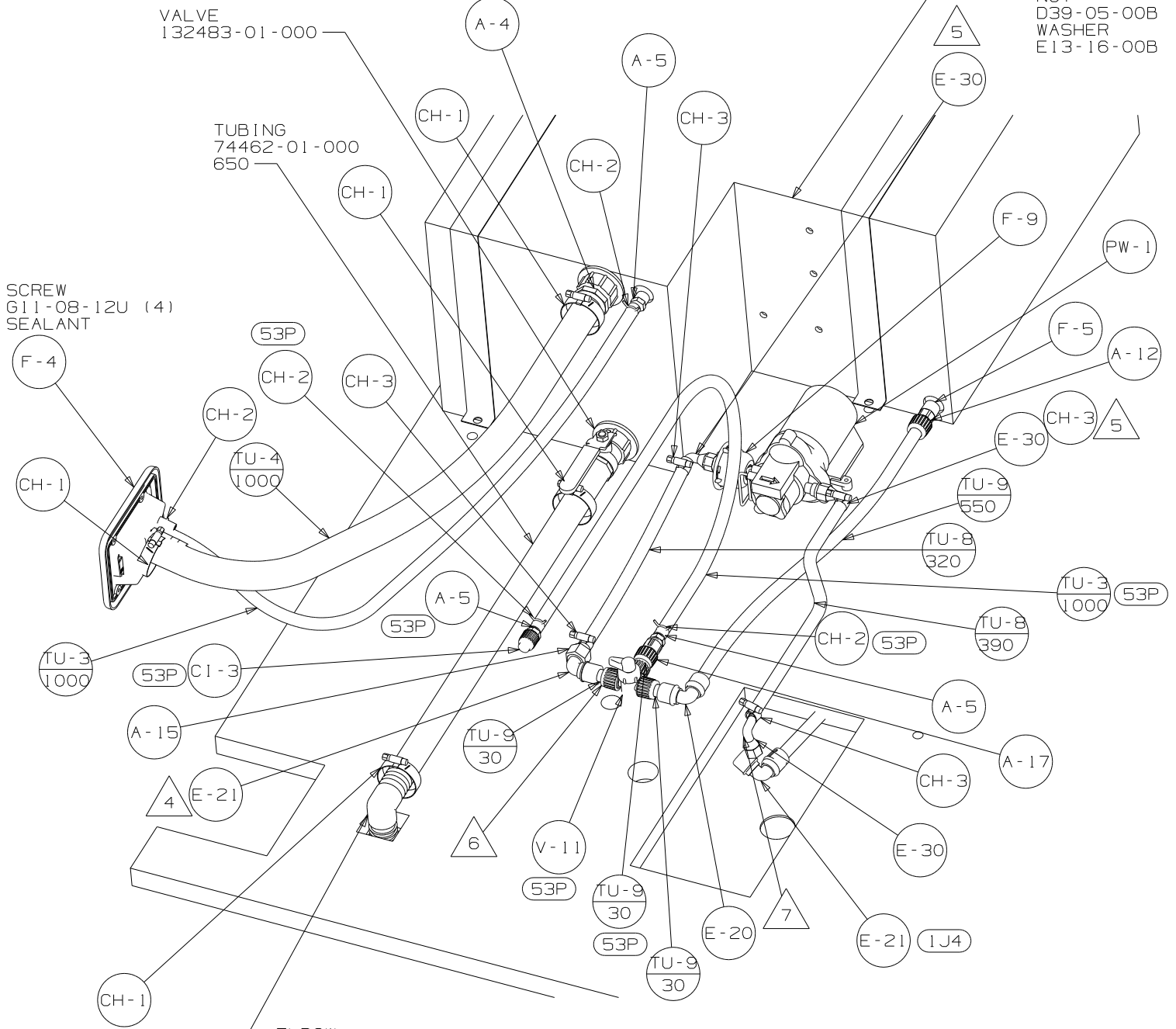


LINES ROUTED
IN FLOOR

VIEW E

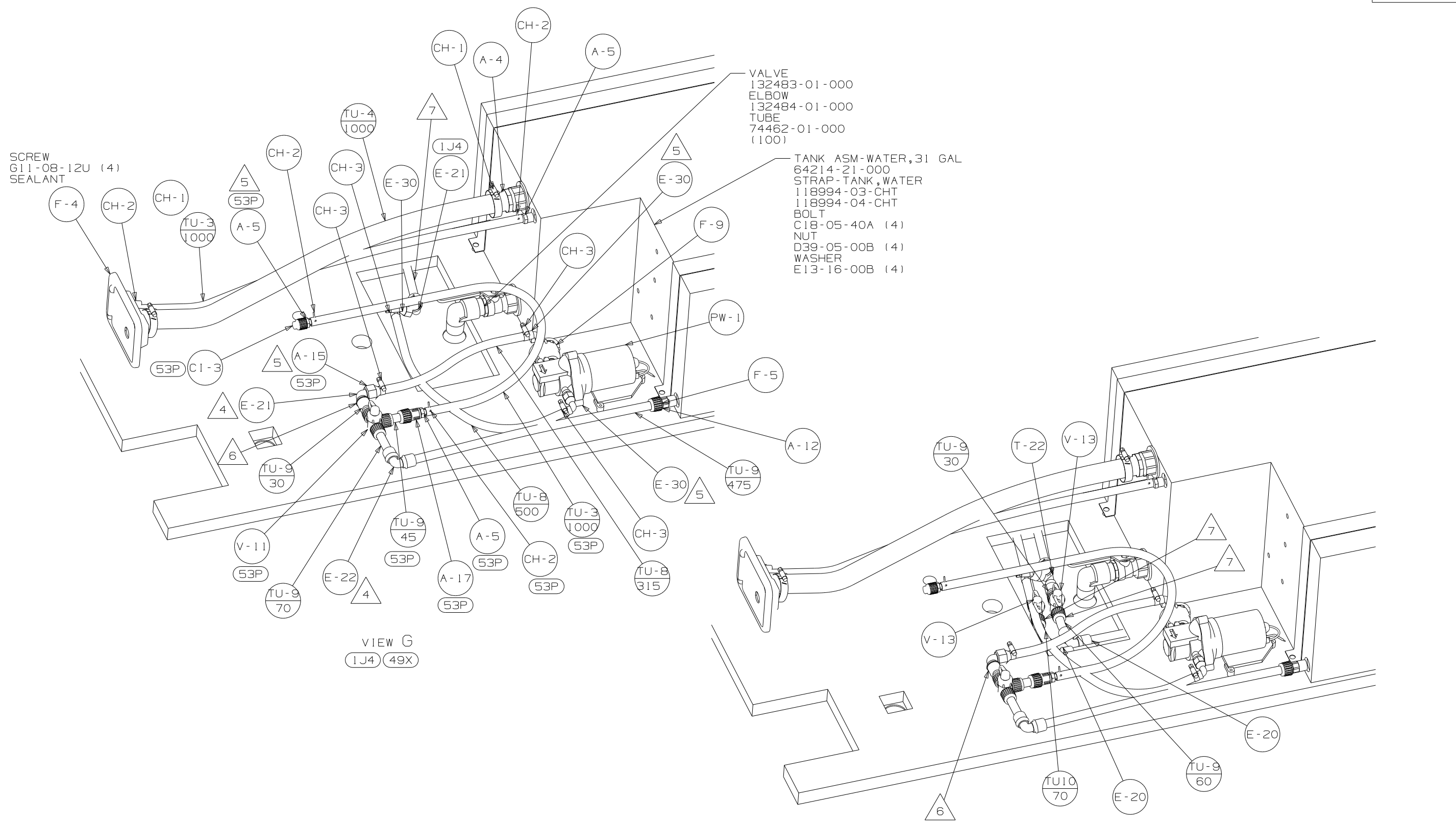
| | |
|------------|----------------------|
| FIRST USED | 04 331C/T |
| TITLE | DO NOT SCALE DRAWING |
| SHEET 3 | PART NO 144464 |
| | 1 1/7/2004 |

- TANK ASM-WATER, 31 GAL
64214-21-000
- STRAP-TANK, WATER
118994-03-CHT
- 118994-04-CHT
- BOLT
C18-05-40A (4)
- NUT
D39-05-00B (4)
- WASHER
E13-16-00B (4)



VIEW F
64R 44X 45G

| | |
|------------|----------------------|
| FIRST USED | 04 331C/T |
| TITLE | DO NOT SCALE DRAWING |
| | WATER SYSTEM INSTL |
| SHEET 4 | PART NO 144464 |



SCREW
G11-08-12U (4)
SEALANT

VALVE
132483-01-000
ELBOW
132484-01-000
TUBE
74462-01-000
(100)

TANK ASM-WATER, 31 GAL
64214-21-000
STRAP-TANK, WATER
118994-03-CHT
118994-04-CHT
BOLT
C18-05-40A (4)
NUT
D39-05-00B (4)
WASHER
E13-16-00B (4)

VIEW G
1J4 49X

VIEW G
64R 49X

| | |
|----------------------|--------------------|
| FIRST USED | 04 331C/T |
| DO NOT SCALE DRAWING | |
| TITLE | WATER SYSTEM INSTL |
| SHEET 5 | PART NO 144464 |