



DANGER

Danger of electrical shock, burns or death. Always remove all power sources before attempting any repair, service or diagnostic work. Power can be present from shore power, generator, inverter or battery. All power sources must be disabled and secured before performing any service.

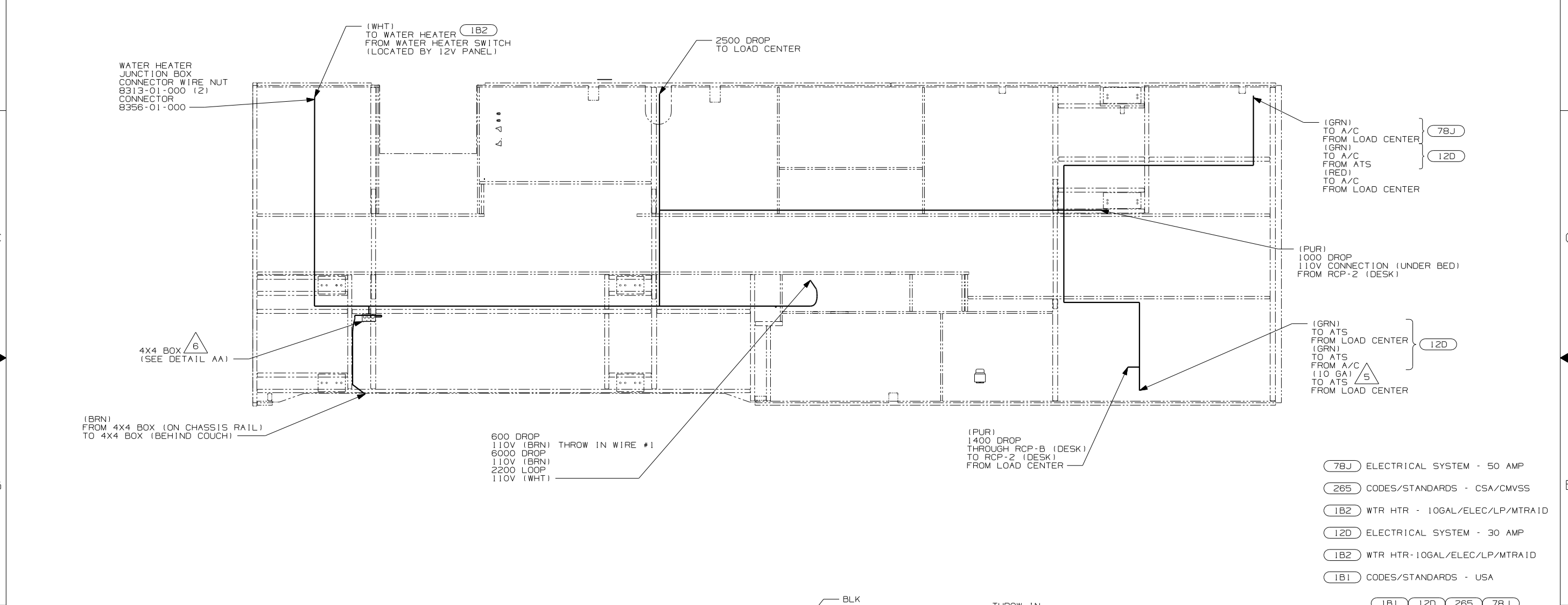


CAUTION

If you lack the skills, tools or equipment to perform diagnostic or repair work leave such work to an authorized Winnebago Industries dealer or other qualified shop.

DWG NO.	FEATURE
142900-01	-----
142900-11	(1B1) (12D)
142900-12	(1B1) (78J)
142900-15	(265) (12D)
142900-16	(265) (78J)

RELEASE	REV DATE	DWG NO	142900
REV ZONE	REVISION RECORD	DATE	DTR-0R16



- (78J) ELECTRICAL SYSTEM - 50 AMP
- (265) CODES/STANDARDS - CSA/CMVSS
- (1B2) WTR HTR - 10GAL/ELEC/LP/MTR1D
- (12D) ELECTRICAL SYSTEM - 30 AMP
- (1B2) WTR HTR - 10GAL/ELEC/LP/MTR1D
- (1B1) CODES/STANDARDS - USA

(1B1) (12D) (265) (78J)

WINNEBAGO COPYRIGHT 2002 WINNEBAGO INDUSTRIES, INC.

DTR	ORIG. DATE
CHKR	ALL DIMENSIONS ARE IN MILLIMETERS
P.E.	FIRST USED
M.E.	03 G33V
DSNR	

UNSPECIFIED TOLERANCES ARE: MATERIAL:

WHOLE DIM (X)	: 1
ONE-PLACE (X.X)	: 1.5
TWO-PLACE (X.XX)	: 0.50
ANGLE	: 1°

THIRD ANGLE PROJECTION

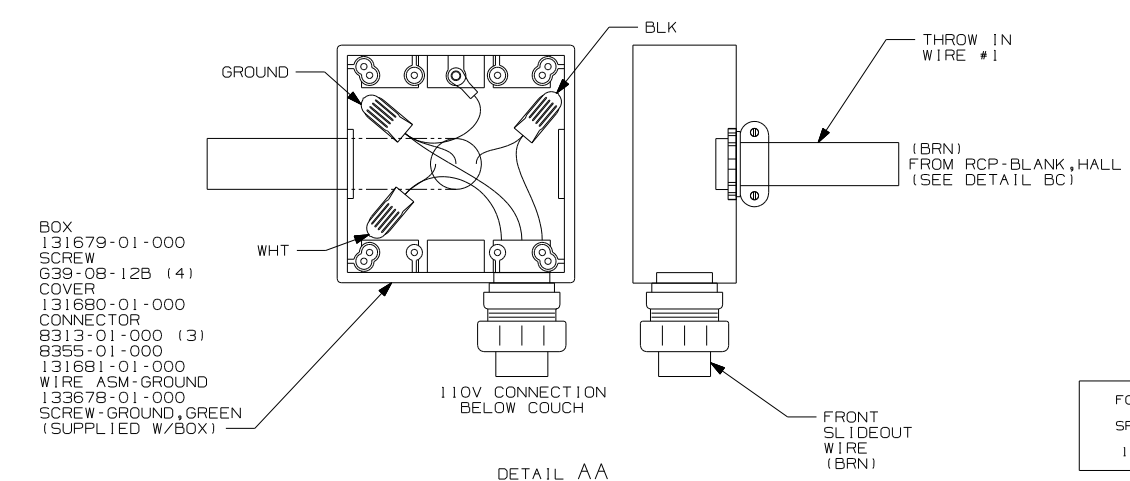
DO NOT SCALE DRAWING

TITLE: WIRING INSTL-BODY, 110V

SHEET 1 OF 4 PART NO 142900

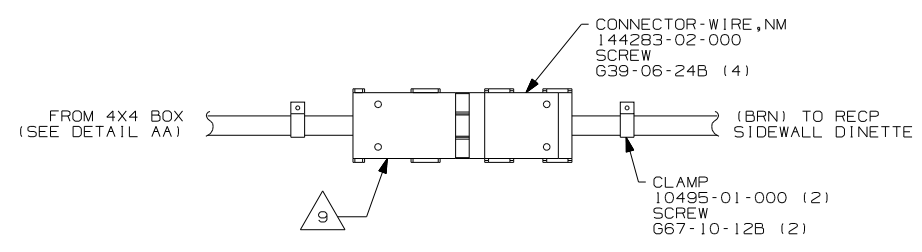
REF: 137070 1 03/03/03

- 6 MOUNT 4X4 BOX ON CLOSEOUT PANEL OVER HOLE.
- 5 FOR MORE INFORMATION SEE LOAD CENTER/ATS ASM.
- FOR MORE INFORMATION SEE WIRING DIAGRAM-BODY, 110V.
 - ALL 110V WIRE TO BE CLAMPED WITH CLAMP 10497-05-000 WITHIN 200MM OF OUTLET BOXES, USE SCREW G67-10-12B.
 - ALL WIRES TO BE SECURED WITH CLAMP 10495-01-000 OR CLIP B0734-01-000 EVERY 600MM. USE SCREW G67-10-12B UNLESS OTHERWISE SPECIFIED.

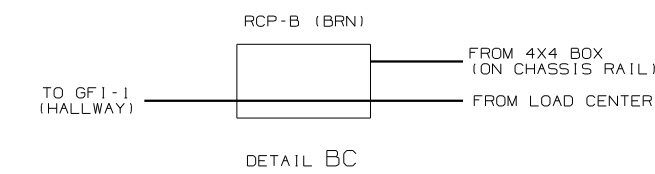
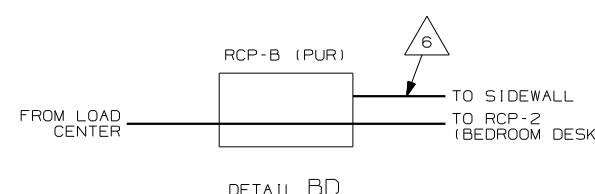
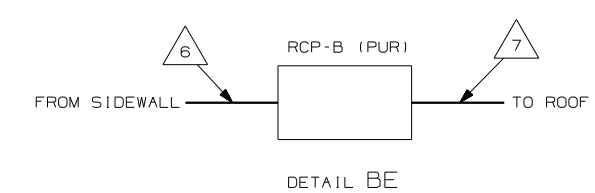
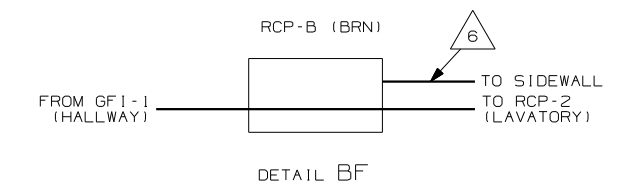
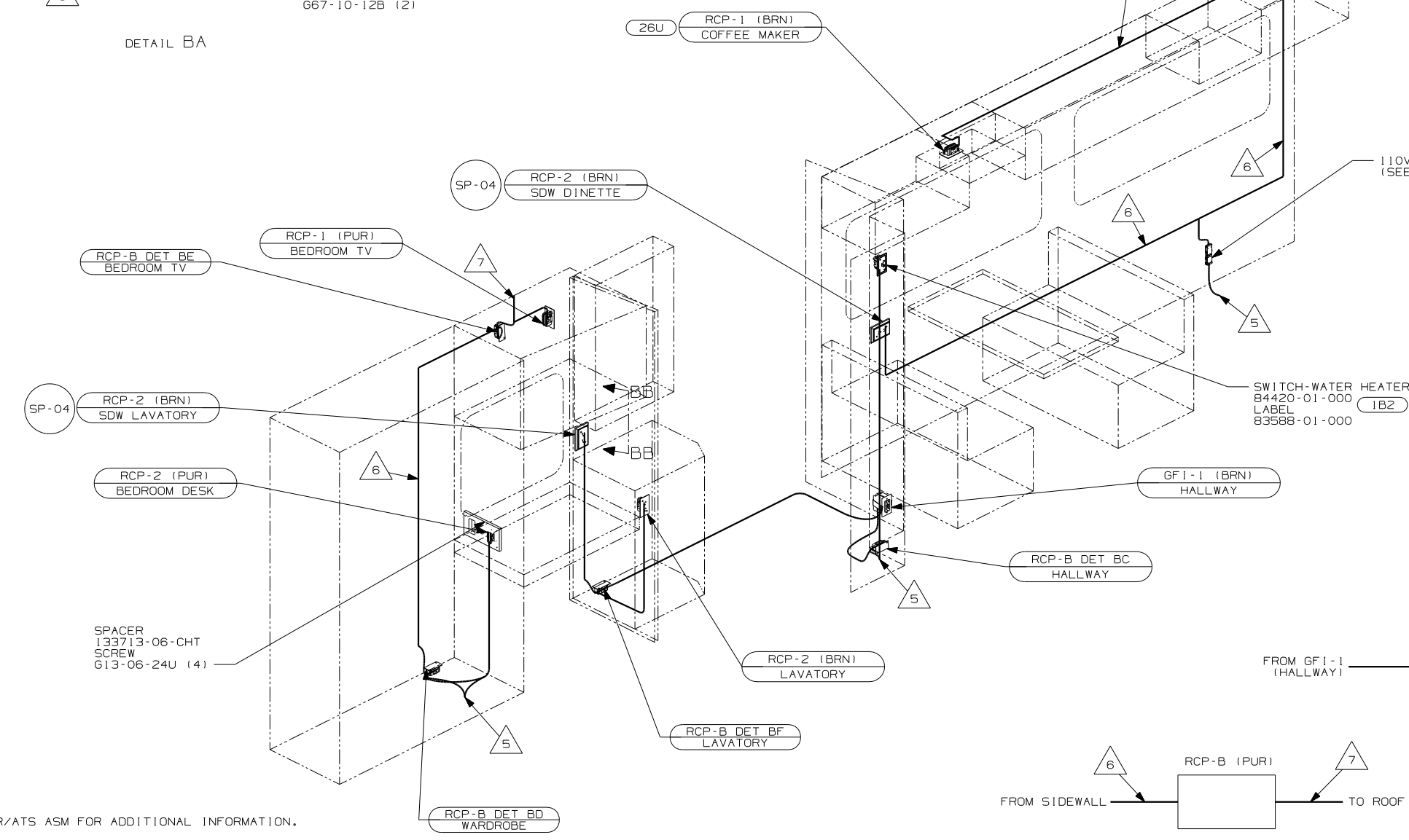
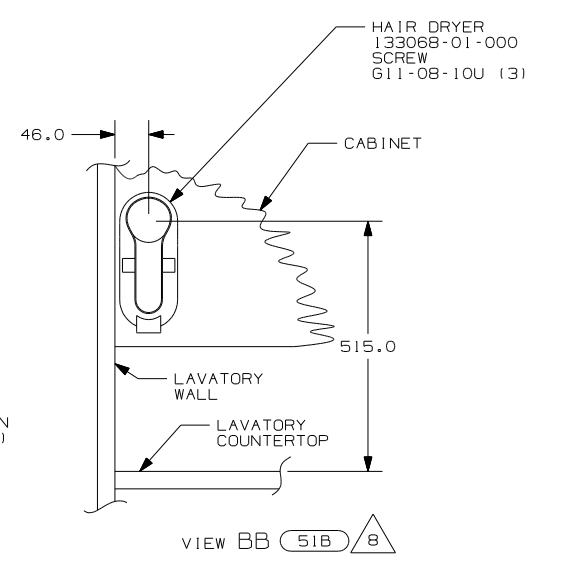


FOR ELECTRICAL TORQUE SPECIFICATIONS SEE DWG NO. 128783-01-000

(X-X) FOR ELECTRICAL CALLOUTS SEE DWG NO. 121339-01-000



DETAIL BA



- (9) SEE LOAD CENTER/ATS ASM FOR ADDITIONAL INFORMATION.
- (8) DIMENSIONS ARE TO TOP MOUNTING SCREW ON BACK PLATE.
- (7) WIRE IN ROOF.
- (6) WIRE IN SIDEWALL.
- (5) WIRE ROUTED THROUGH FLOOR AT THIS POINT.

4. FOR MORE INFORMATION SEE WIRING DIAGRAM-BODY, 110V.
3. ALL GROUND WIRE TO BE COVERED WITH TUBING 8041-02-000.
2. ALL 110V WIRE TO BE CLAMPED WITH CLAMP 10497-05-000 WITHIN 200MM OF OUTLET BOXES, USE SCREW 667-10-12B.
1. ALL WIRES TO BE SECURED WITH CLAMP 10495-01-000 OR CLIP 80734-01-000 EVERY 600MM. USE SCREW 667-10-12B UNLESS OTHERWISE SPECIFIED.

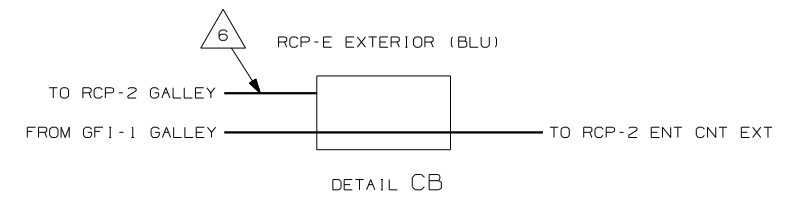
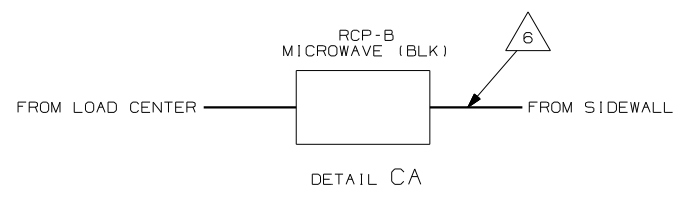
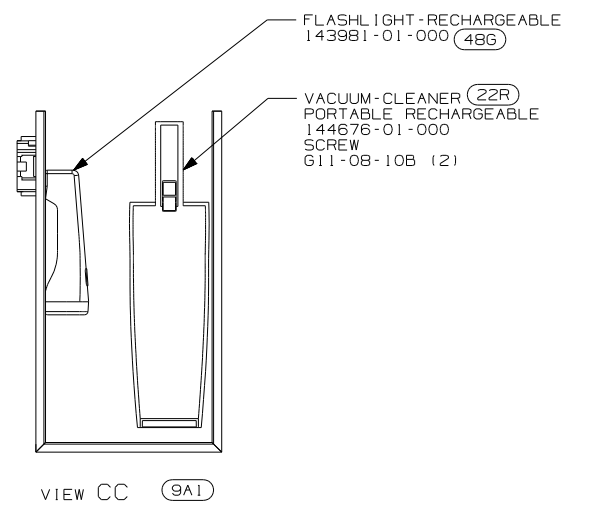
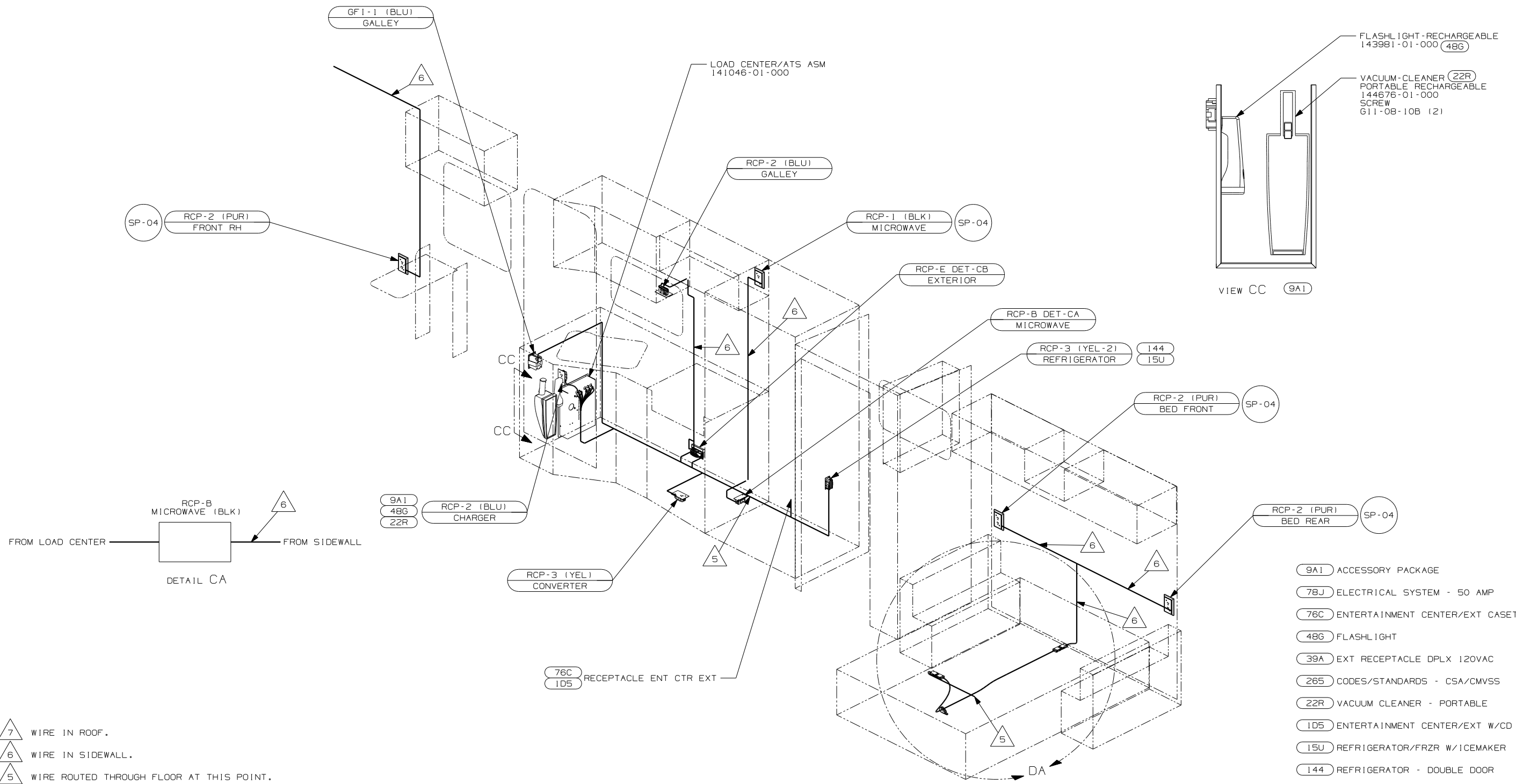
NOTES:

- (1B2) WTR HTR-10GAL/ELEC/LP/MTR/ID
- (78J) ELECTRICAL SYSTEM - 50 AMP
- (51B) HAIR DRYER
- (26U) COFFEE MAKER
- (265) CODES/STANDARDS - CSA/CMVSS
- (12D) ELECTRICAL SYSTEM - 30 AMP
- (1B1) CODES/STANDARDS - USA
- (1B1) (12D) (265) (78J)

FOR ELECTRICAL TORQUE SPECIFICATIONS SEE DWG NO. 128783-01-000

FOR ELECTRICAL CALLOUTS SEE DWG NO. 121339-01-000

FIRST USED	03 G33V
DO NOT SCALE DRAWING	
TITLE:	WIRING INSTL-BODY, 110V
SHEET 2	PART NO 142900



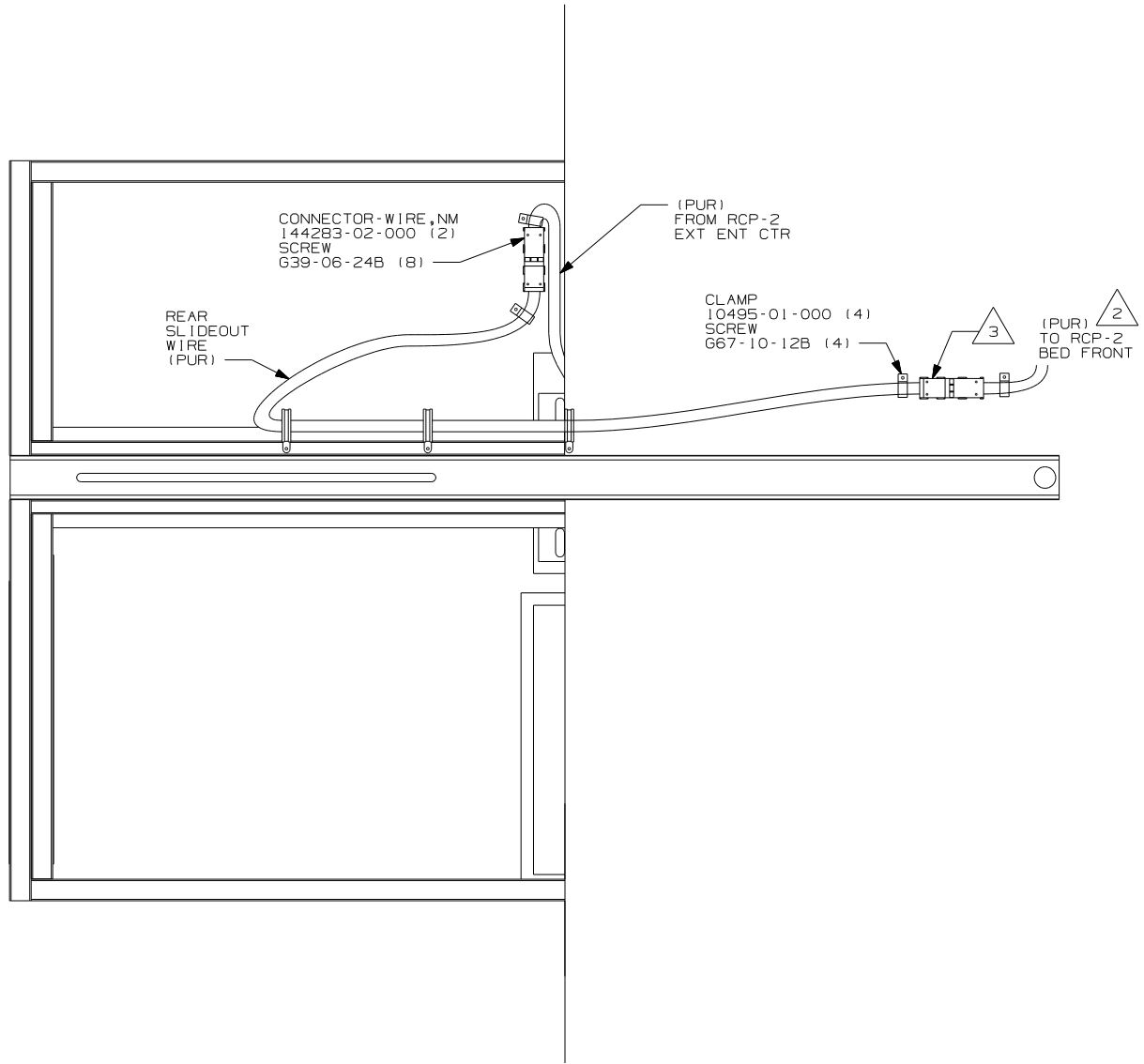
- 9A1 ACCESSORY PACKAGE
- 78J ELECTRICAL SYSTEM - 50 AMP
- 76C ENTERTAINMENT CENTER/EXT CASSETTE
- 48G FLASHLIGHT
- 39A EXT RECEPTACLE DPLX 120VAC
- 265 CODES/STANDARDS - CSA/CMVSS
- 22R VACUUM CLEANER - PORTABLE
- 1D5 ENTERTAINMENT CENTER/EXT W/CD
- 15U REFRIGERATOR/FRZR W/ICEMAKER
- 144 REFRIGERATOR - DOUBLE DOOR
- 12D ELECTRICAL SYSTEM - 30 AMP
- 1B1 CODES/STANDARDS - USA

- 7 WIRE IN ROOF.
 - 6 WIRE IN SIDEWALL.
 - 5 WIRE ROUTED THROUGH FLOOR AT THIS POINT.
4. FOR MORE INFORMATION SEE WIRING DIAGRAM-BODY,110V.
 3. ALL GROUND WIRE TO BE COVERED WITH TUBING 8041-02-000.
 2. ALL 110V WIRE TO BE CLAMPED WITH CLAMP 10497-05-000 WITHIN 200MM OF OUTLET BOXES, USE SCREW G67-10-12B.
 1. ALL WIRES TO BE SECURED WITH CLAMP 10495-01-000 OR CLIP B0734-01-000 EVERY 600MM. USE SCREW G67-10-12B UNLESS OTHERWISE SPECIFIED.

FOR ELECTRICAL TORQUE SPECIFICATIONS SEE DWG NO. 128783-01-000

FOR ELECTRICAL CALLOUTS SEE DWG NO. 121339-01-000

FIRST USED	03 G33V
DO NOT SCALE DRAWING	
TITLE: WIRING INSTL-BODY, 110V	
SHEET 3	PART NO 142900



DETAIL DA

- (78J) ELECTRICAL SYSTEM - 50 AMP
- (265) CODES/STANDARDS - CSA/CMVSS
- (1B1) CODES/STANDARDS - USA
- (12D) ELECTRICAL SYSTEM - 30 AMP

(12D) (1B1) (265) (78J)

FIRST USED	03 G33V
TITLE	DO NOT SCALE DRAWING
TITLE	WIRING INSTL-BODY, 110V
SHEET 4	PART NO 142900

3 SEE LOAD CENTER/ATS ASM FOR ADDITIONAL INFORMATION.

2 WIRE IN SIDEWALL

1. WIRE MUST BE ROUTED THROUGH CLAMPS AS SHOWN.

NOTES:

FOR ELECTRICAL TORQUE SPECIFICATIONS SEE DWG NO. 128783-01-000

FOR ELECTRICAL CALLOUTS SEE DWG NO. 121339-01-000

