



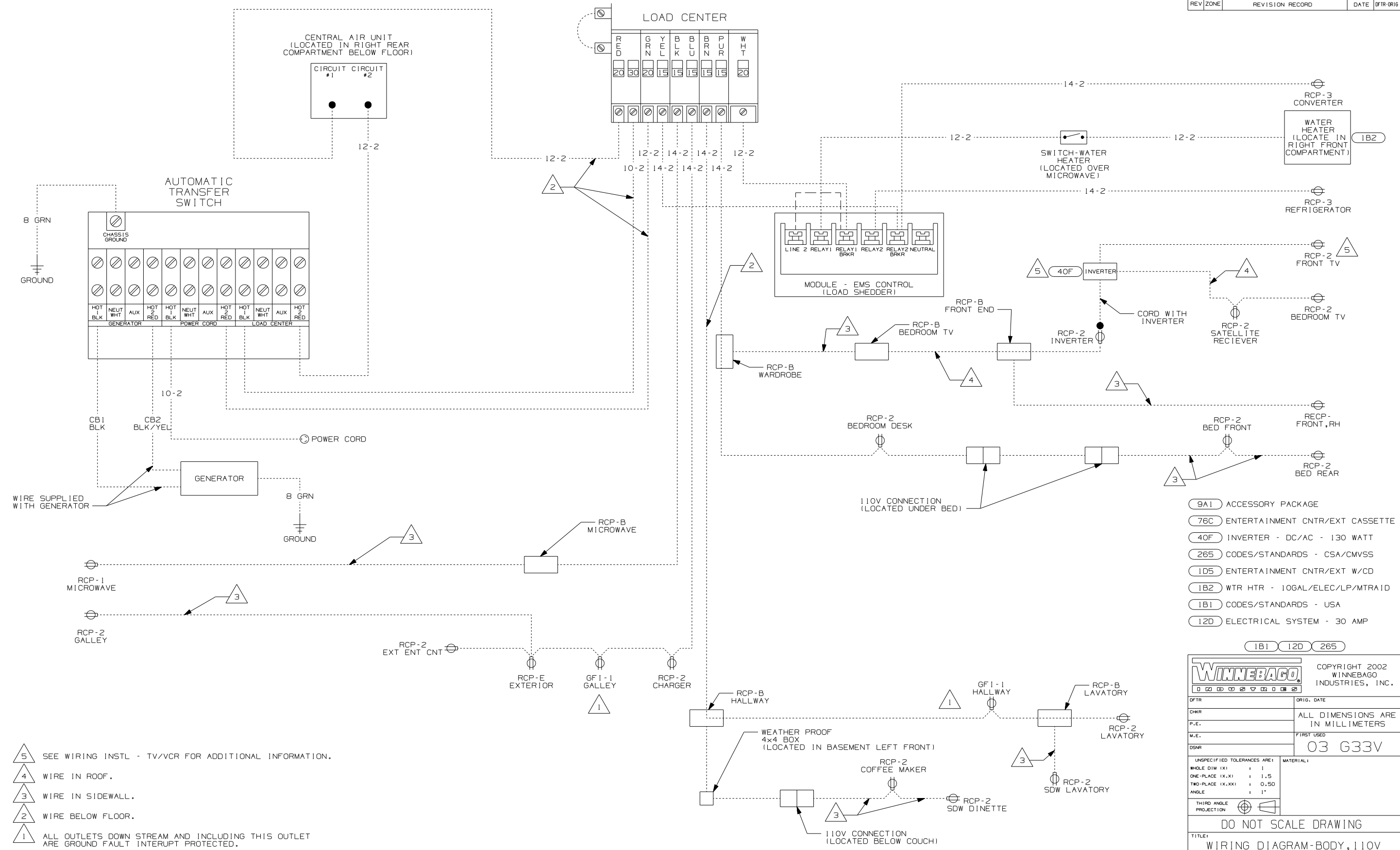
DANGER

Danger of electrical shock, burns or death. Always remove all power sources before attempting any repair, service or diagnostic work. Power can be present from shore power, generator, inverter or battery. All power sources must be disabled and secured before performing any service.



CAUTION

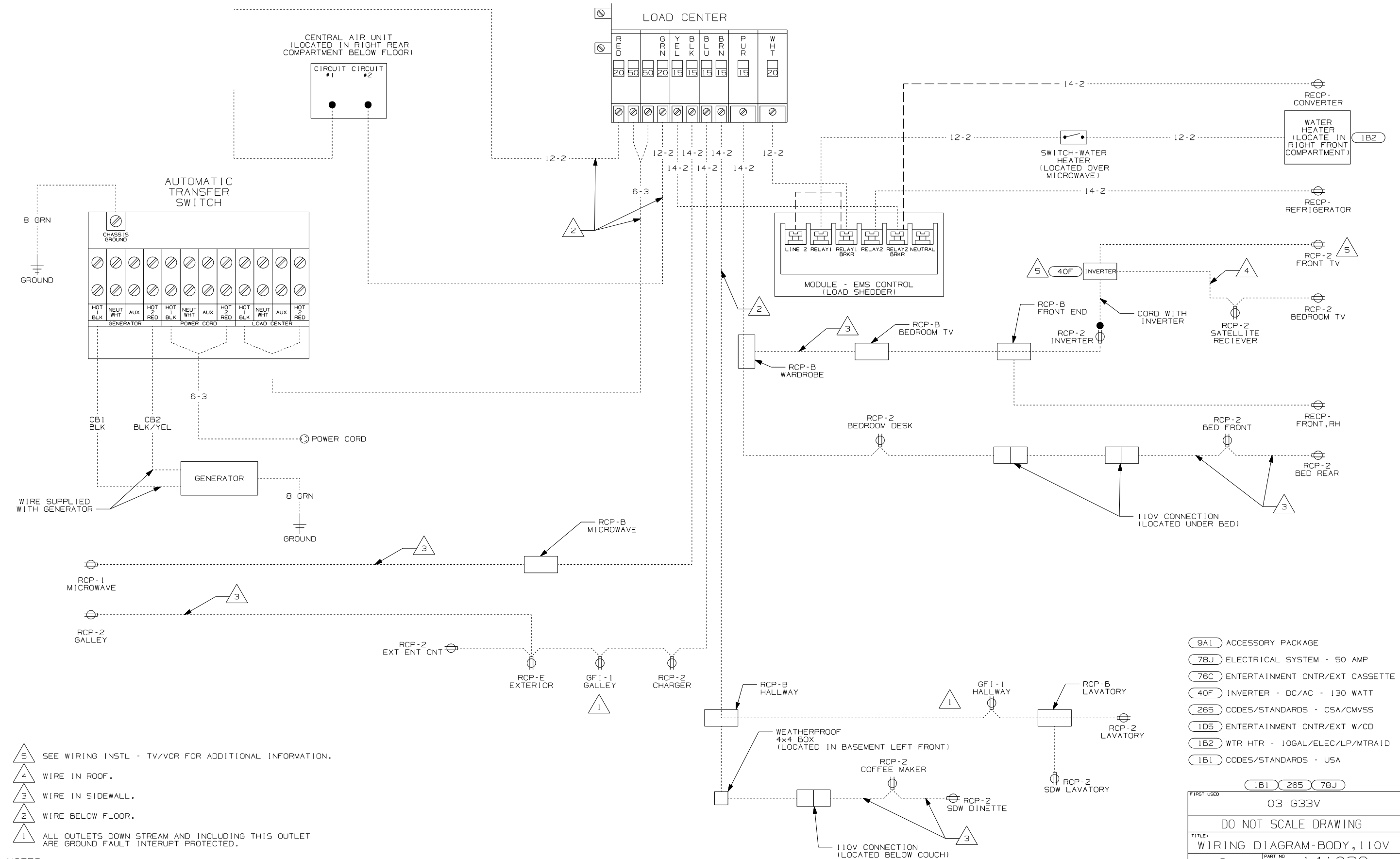
If you lack the skills, tools or equipment to perform diagnostic or repair work leave such work to an authorized Winnebago Industries dealer or other qualified shop.



- (9A1) ACCESSORY PACKAGE
- (76C) ENTERTAINMENT CNTR/EXT CASSETTE
- (40F) INVERTER - DC/AC - 130 WATT
- (265) CODES/STANDARDS - CSA/CMVSS
- (1D5) ENTERTAINMENT CNTR/EXT W/CD
- (1B2) WTR HTR - 10GAL/ELEC/LP/MTR/1D
- (1B1) CODES/STANDARDS - USA
- (12D) ELECTRICAL SYSTEM - 30 AMP

WINNEBAGO		COPYRIGHT 2002 WINNEBAGO INDUSTRIES, INC.	
DFTR	ORIG. DATE		
CHKR	ALL DIMENSIONS ARE IN MILLIMETERS		
P.E.	FIRST USED	03 G33V	
M.E.			
DSNR			
UNSPECIFIED TOLERANCES ARE:		MATERIAL:	
WHOLE DIM (X)	: 1		
ONE-PLACE (X.X)	: 1.5		
TWO-PLACE (X.XX)	: 0.50		
ANGLE	: 1°		
THIRD ANGLE PROJECTION			
DO NOT SCALE DRAWING			
TITLE: WIRING DIAGRAM-BODY, 110V			
SHEET 1 OF 2	PART NO	141036	
REF: 137068 1 02/28/03			

- NOTES:**
- (5) SEE WIRING INSTL - TV/VCR FOR ADDITIONAL INFORMATION.
 - (4) WIRE IN ROOF.
 - (3) WIRE IN SIDEWALL.
 - (2) WIRE BELOW FLOOR.
 - (1) ALL OUTLETS DOWN STREAM AND INCLUDING THIS OUTLET ARE GROUND FAULT INTERRUPT PROTECTED.



- 5 SEE WIRING INSTL - TV/VCR FOR ADDITIONAL INFORMATION.
- 4 WIRE IN ROOF.
- 3 WIRE IN SIDEWALL.
- 2 WIRE BELOW FLOOR.
- 1 ALL OUTLETS DOWN STREAM AND INCLUDING THIS OUTLET ARE GROUND FAULT INTERRUPT PROTECTED.

NOTES:

- 9A1 ACCESSORY PACKAGE
- 78J ELECTRICAL SYSTEM - 50 AMP
- 76C ENTERTAINMENT CNTR/EXT CASSETTE
- 40F INVERTER - DC/AC - 130 WATT
- 265 CODES/STANDARDS - CSA/CMVSS
- 105 ENTERTAINMENT CNTR/EXT W/CD
- 1B2 WTR HTR - 10GAL/ELEC/LP/MTR/1D
- 1B1 CODES/STANDARDS - USA

FIRST USED	03 G33V
DO NOT SCALE DRAWING	
TITLE: WIRING DIAGRAM-BODY, 110V	
SHEET 2	PART NO 141036