



DANGER

Danger of electrical shock, burns or death. Always remove all power sources before attempting any repair, service or diagnostic work. Power can be present from shore power, generator, inverter or battery. All power sources must be disabled and secured before performing any service.

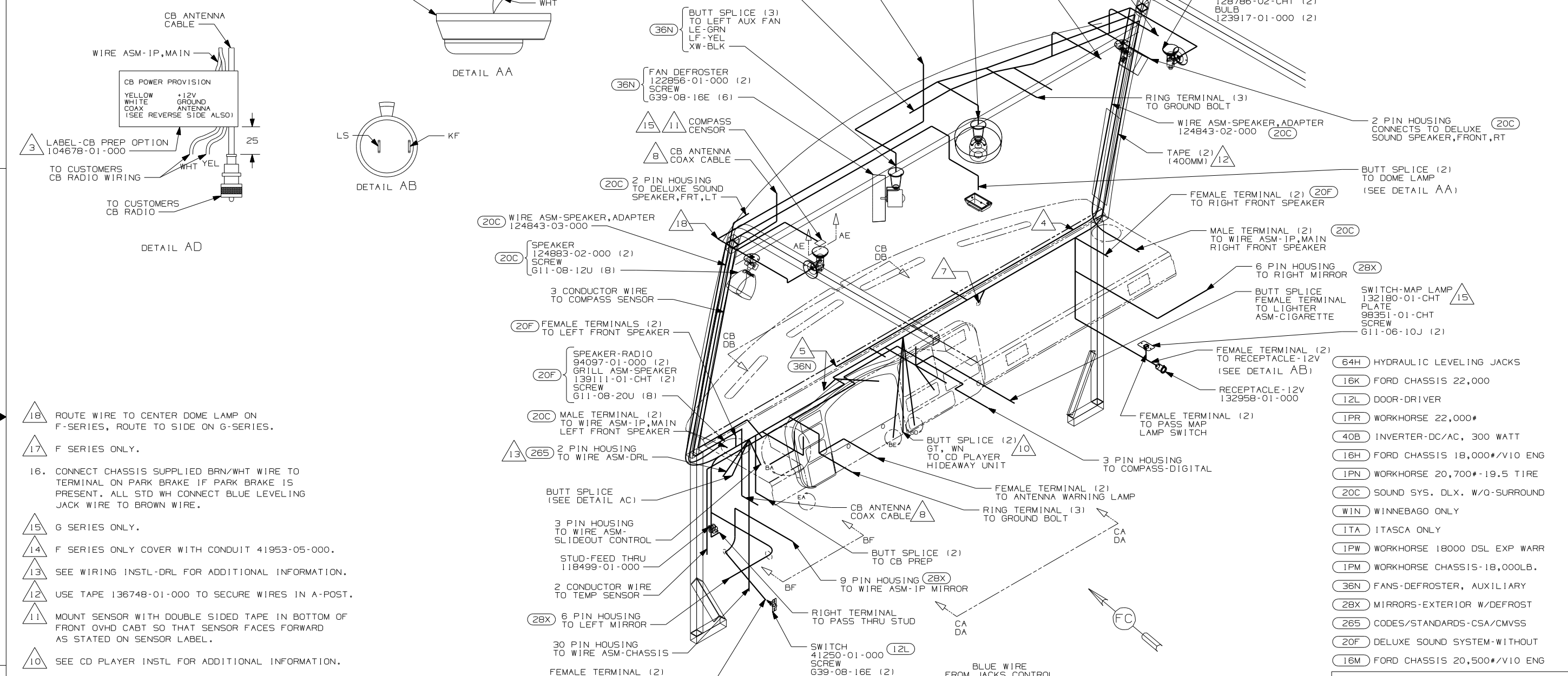


CAUTION

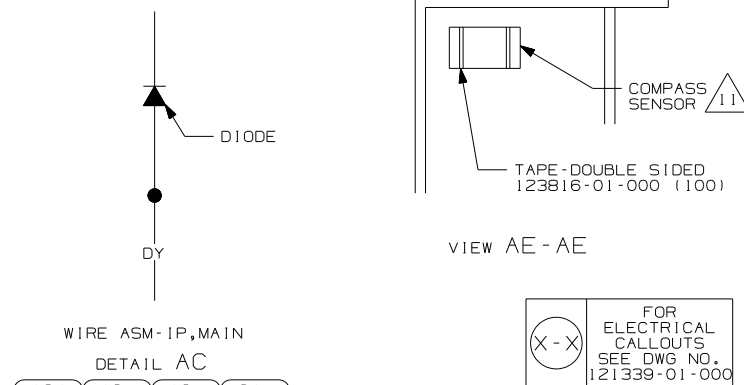
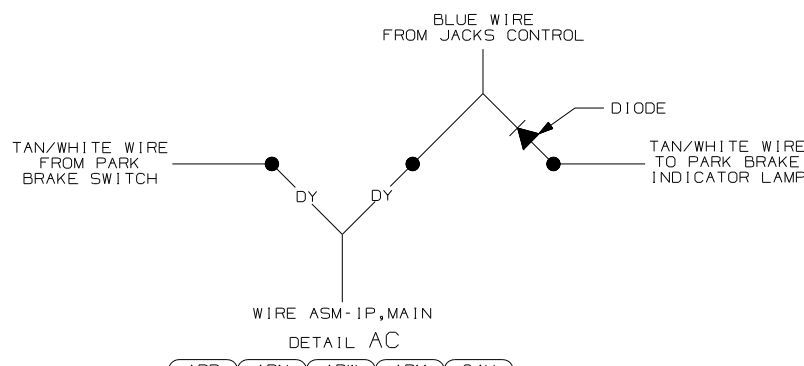
If you lack the skills, tools or equipment to perform diagnostic or repair work leave such work to an authorized Winnebago Industries dealer or other qualified shop.

DRAWING NO.	SERIES
141293-01	F
141293-02	G

RELEASE	REV/DATE	DWG NO
	A	141293
REV ZONE	REVISION RECORD	DATE
		DFTR-016



18. ROUTE WIRE TO CENTER DOME LAMP ON F-SERIES, ROUTE TO SIDE ON G-SERIES.
17. F SERIES ONLY.
16. CONNECT CHASSIS SUPPLIED BRN/WHT WIRE TO TERMINAL ON PARK BRAKE IF PARK BRAKE IS PRESENT. ALL STD WH CONNECT BLUE LEVELING JACK WIRE TO BROWN WIRE.
15. G SERIES ONLY.
14. F SERIES ONLY COVER WITH CONDUIT 41953-05-000.
13. SEE WIRING INSTL-DRL FOR ADDITIONAL INFORMATION.
12. USE TAPE 136748-01-000 TO SECURE WIRES IN A-POST.
11. MOUNT SENSOR WITH DOUBLE SIDED TAPE IN BOTTOM OF FRONT OVHD CABT SO THAT SENSOR FACES FORWARD AS STATED ON SENSOR LABEL.
10. SEE CD PLAYER INSTL FOR ADDITIONAL INFORMATION.
8. SEE ANTENNA INSTL-CB AND DETAIL AB.
7. ROUTE WASHER BOTTLE WIRE TOGETHER WITH HEATER CONTROL WIRES THROUGH HOLE IN STEEL ABOVE AND RIGHT OF ENGINE. USE GROMMET 23942-01-000.
5. CONNECT HOUSINGS TOGETHER.
4. USE WIRE TIE 93147-01-000 TO SECURE WIRE ASM-IP,MAIN.
3. FOR INFORMATION ON HWH SLIDEOUT WIRING SEE DETAIL DA.
2. FOR ADDITIONAL INFORMATION SEE WIRING INSTL-CHASSIS.
1. ONLY WINNEBAGO WIRE ASSEMBLIES ARE SHOWN FOR CLARITY.



WINNEBAGO

DFTR	ORIG. DATE
CHKR	ALL DIMENSIONS ARE IN MILLIMETERS
P.E.	FIRST USED
M.E.	03 F&G SERIES
DSNR	

UNSPECIFIED TOLERANCES ARE: MATERIAL:

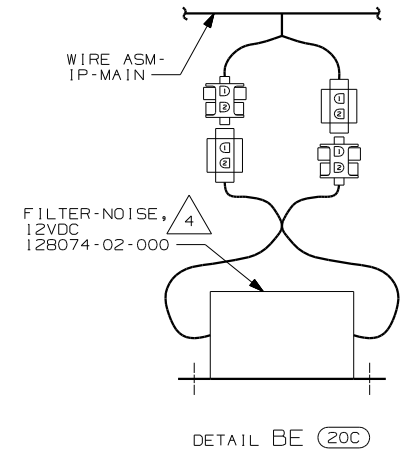
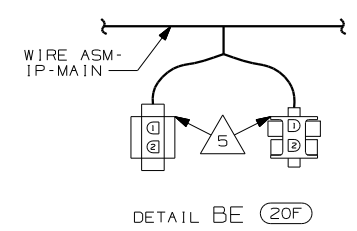
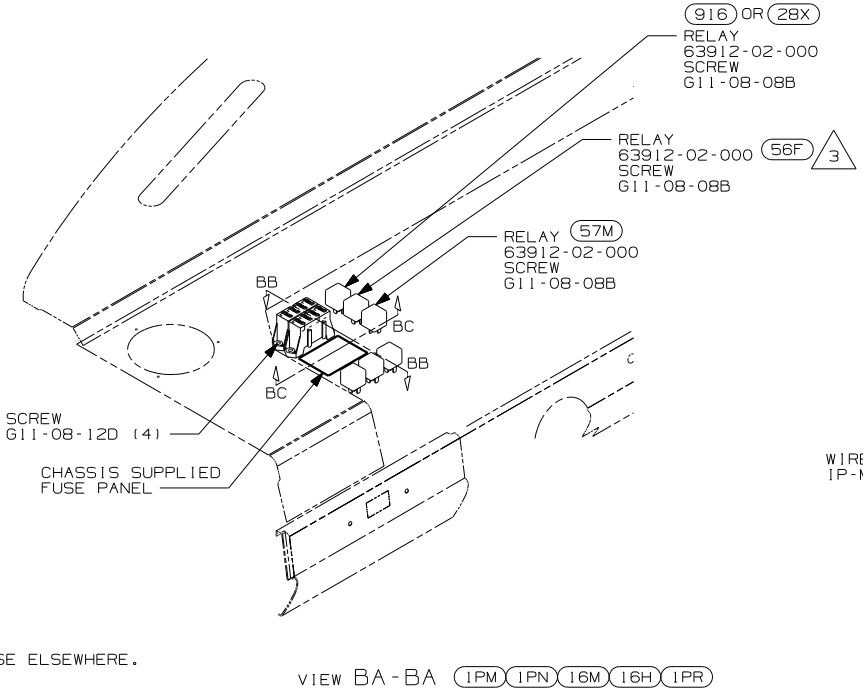
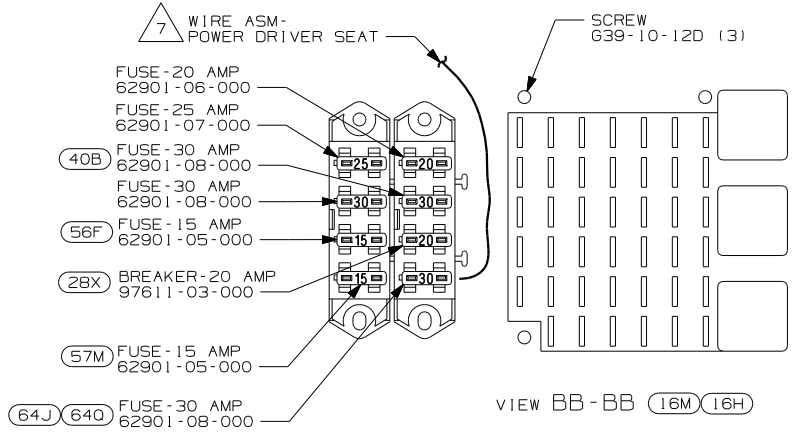
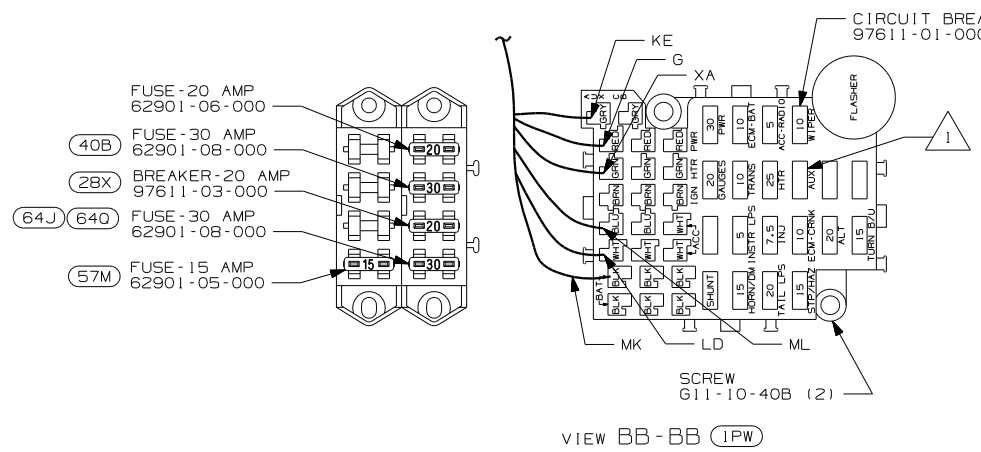
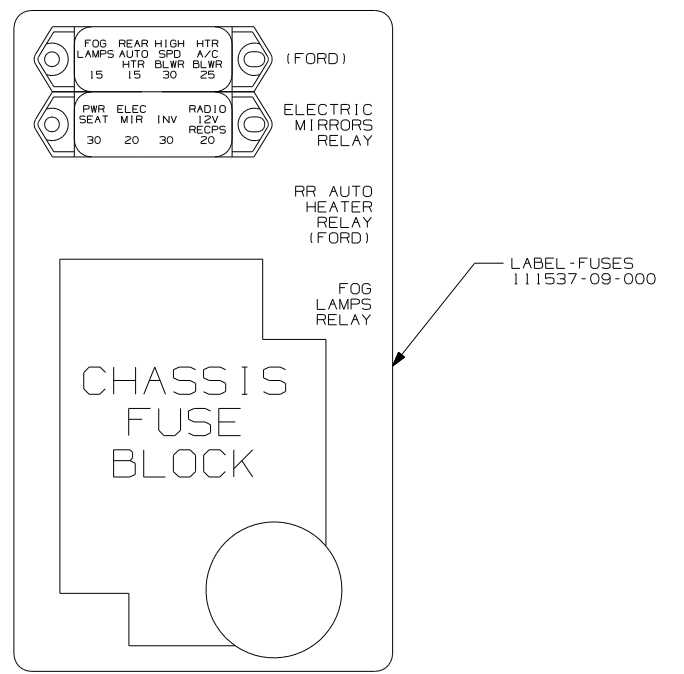
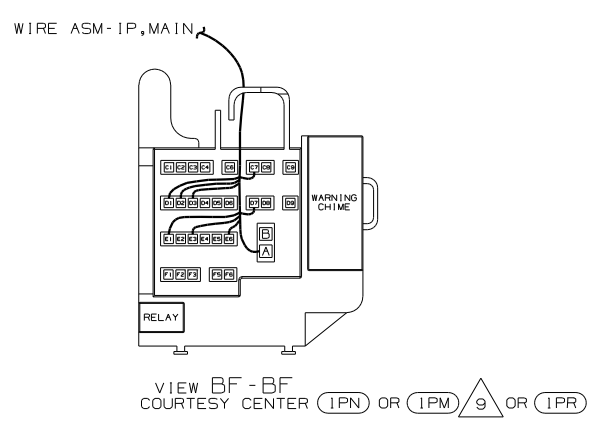
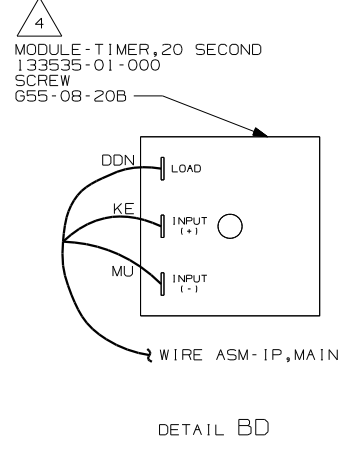
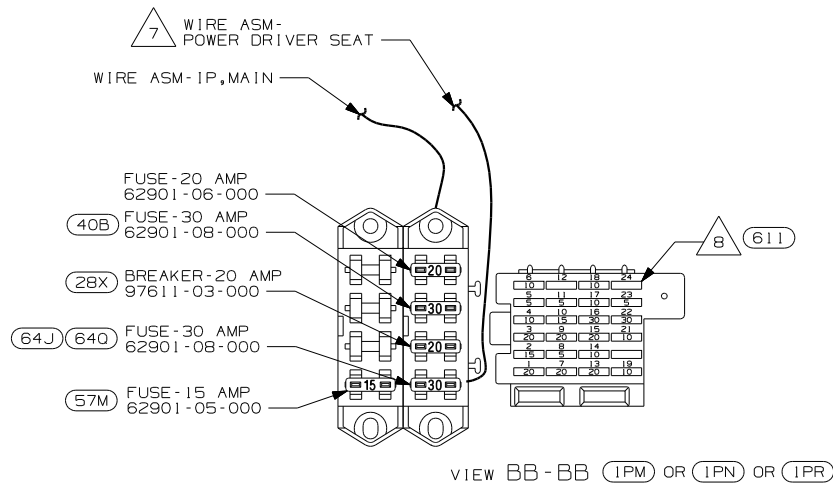
WHOLE DIM (X) :
ONE-PLACE (X.X) :
TWO-PLACE (X.XX) :
ANGLE :
THIRD ANGLE PROJECTION

DO NOT SCALE DRAWING

TITLE: WIRING INSTL-FRONT END

SHEET 1 OF 8 PART NO 141293

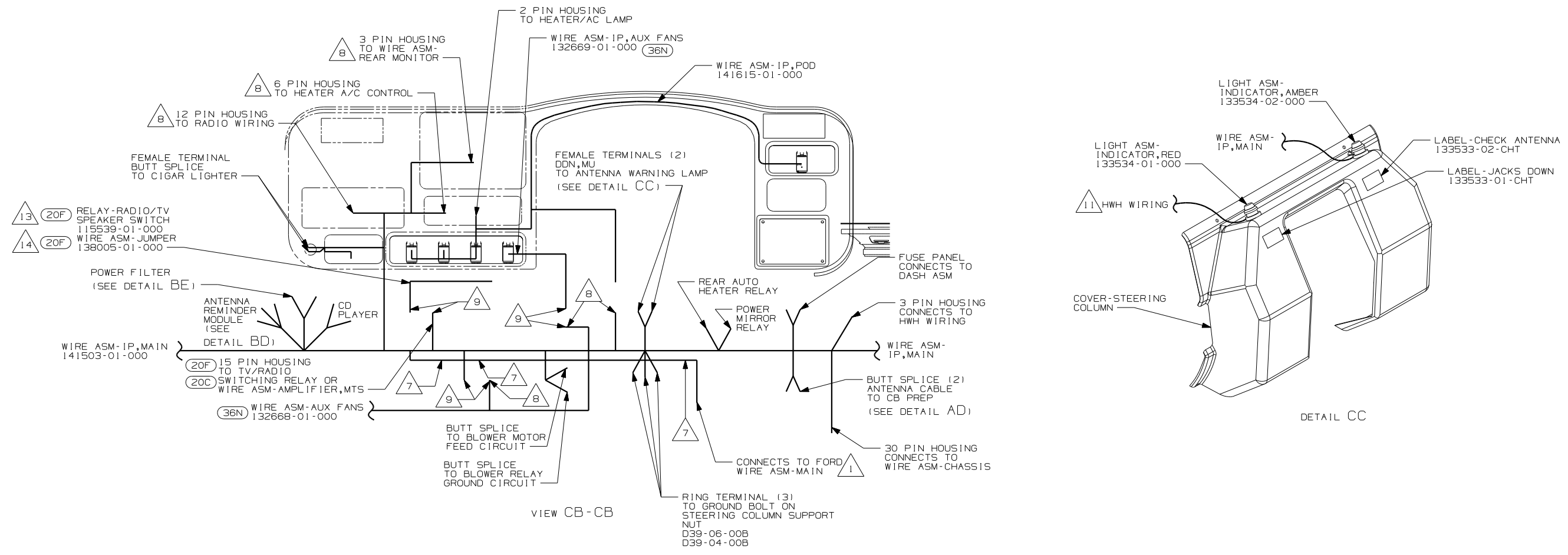
REF: 137513 104/18/03



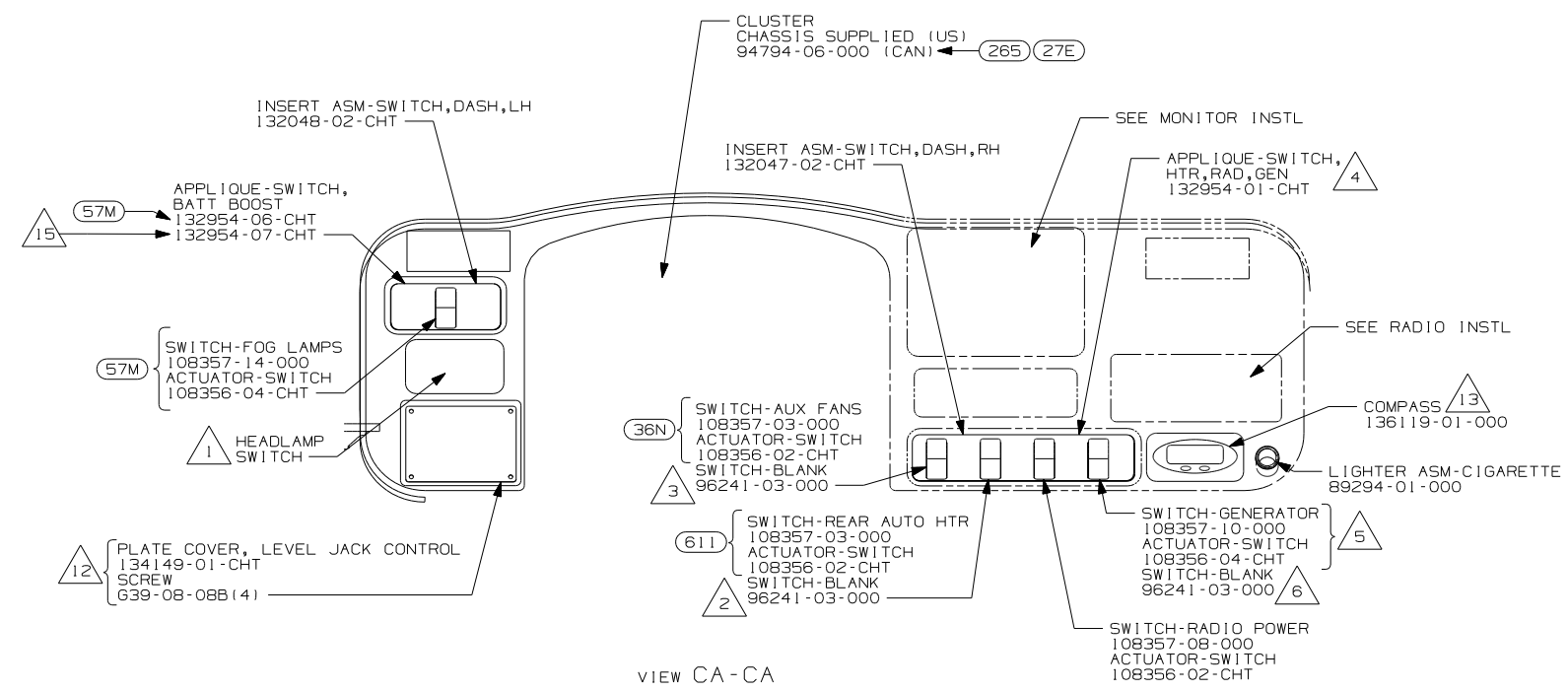
- NOTES:
- (1) G-SERIES ONLY
 - (10) F-SERIES ONLY
 - (9) CHASSIS SUPPLIED
 - (8) REPLACE 5 AMP FUSE IN #24 WITH AMP FUSE 125986-05-000.
 - (7) MOUNT TERMINAL IN FUSE BLOCK.
 - (6) NOT USED WITH (16M) & (16H)
 - (5) CONNECT HOUSINGS TOGETHER.
 - (4) MOUNT ON TOP LEFT REAR CORNER OF PANEL-COVER,RADIATOR.
 - (3) NOT USED WITH (1PM)
 - (2) REPLACE 30A CIRCUIT BREAKER WITH 15 AMP FUSE AND SAVE FOR USE ELSEWHERE.
 - (1) TRIM FUSE BLOCK SO CIRCUIT BREAKER FITS PROPERLY. REPLACE 25 AMP FUSE AND SAVE FOR USE ELSEWHERE.

- (57M) LAMPS-FOG
- (1PW) WORKHORSE 18000 DSL EXP WARR
- (1PR) WORKHORSE 22,000#
- (16H) FORD CHASSIS 18,000#/V10 ENG
- (611) WTR HTR-RR AUTO/MOTORAID
- (1PN) WORKHORSE 20,700#-19.5 TIRE
- (20C) SOUND SYS. DLX. W/Q-SURROUND
- (40B) INVERTER-DC/AC, 300 WATT
- (64J) SEAT PED-6-WAY DR/PASS POWER
- (21V) SOUND SYSTEM DELUXE
- (20F) DELUXE SOUND SYSTEM-WITHOUT
- (16M) FORD CHASSIS 20,500#/V10 ENG
- (1PM) WORKHORSE CHASSIS-18,000LB.
- (916) MIRRORS-EXTERIOR, EXPORT
- (640) SEAT PED-6-WAY POWER DRIVER
- (56F) HEATER-AUXILIARY AUTOMOTIVE
- (28X) MIRRORS-EXTERIOR W/DEFROST

FIRST USED	
03 F&G SERIES	
DO NOT SCALE DRAWING	
TITLE: WIRING INSTL-FRONT END	
SHEET 2	PART NO 141293

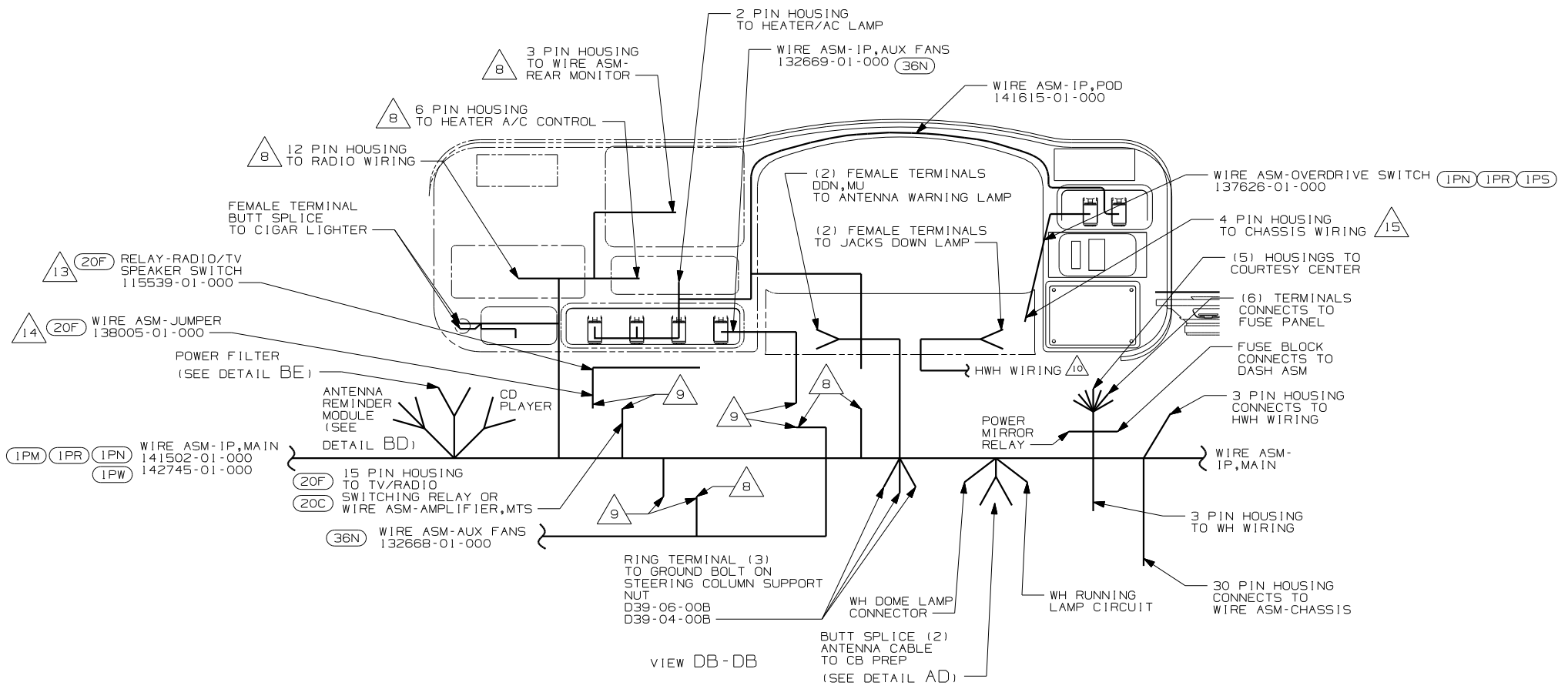


- 15 WITHOUT (57M)
- 14 F-SERIES ONLY
- 13 G-SERIES ONLY
- 12 FOR USE WITH (64H)
- 11 SEE LEVELING SYSTEM INSTL FOR ADDITIONAL INFORMATION.
- 10 MOUNT ON TOP LEFT REAR CORNER OF PANEL-COVER,RADIATOR.
- 9 CONNECT HOUSINGS TOGETHER.
- 8 SECURE IN DASH STEEL.
- 7 TIE ALONG WIRE ASM-MAIN WITH WIRE TIE 93147-01-000
- 6 WITHOUT GENERATOR
- 5 WITH GENERATOR
- 4 COVER CLEAR LEGEND ON BEZEL WITH FILM 77031-01-000 (W/BLANK) OR 77031-03-000 (W/OPTION).
- 3 WITHOUT (36N)
- 2 WITHOUT (611)
- 1 CHASSIS SUPPLIED

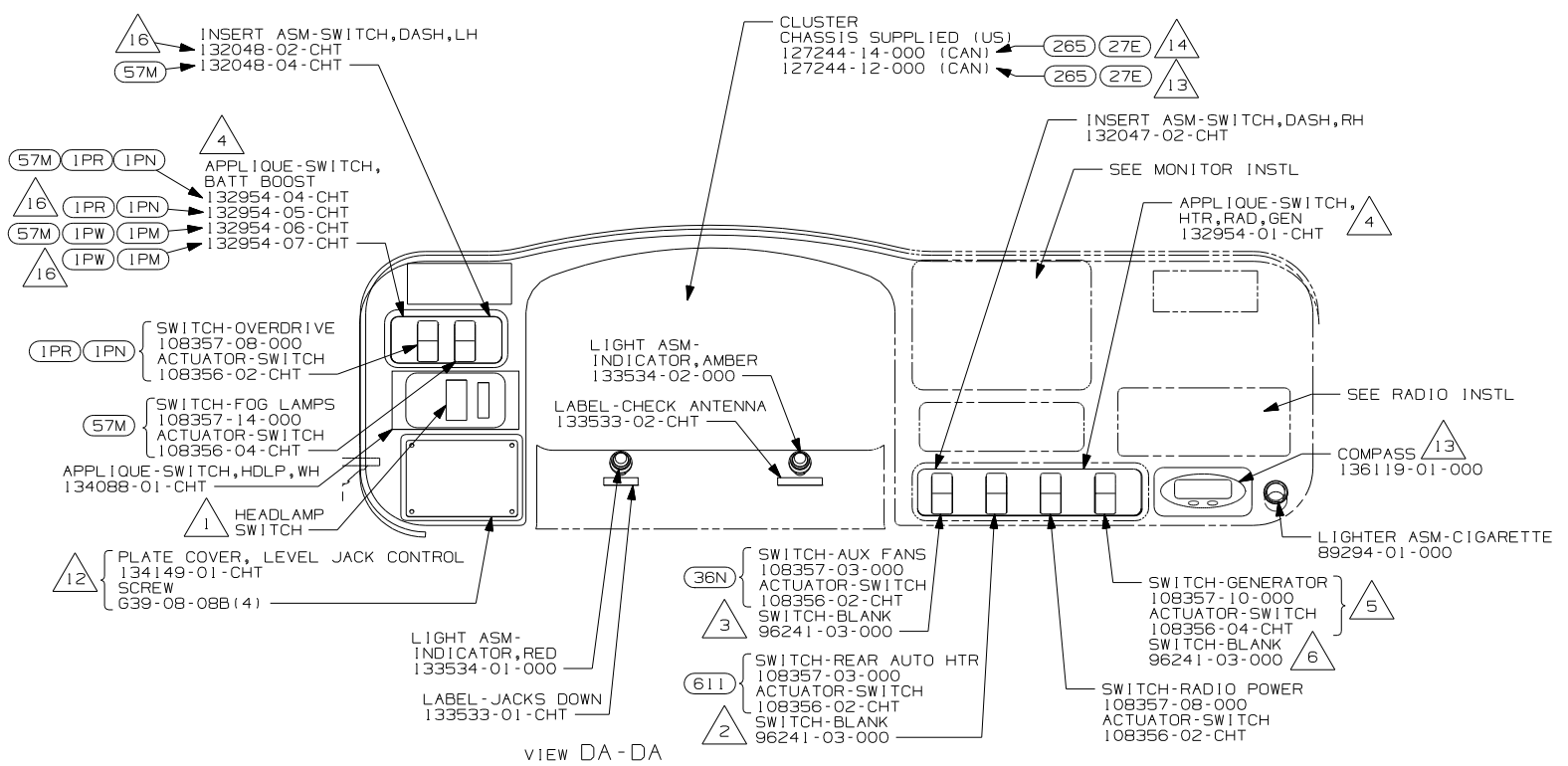


- (57M) LAMPS-FOG
- (16K) FORD CHASSIS 22,000
- (16H) FORD CHASSIS 18,000#/V10 ENG
- (265) CODES/STANDARDS-CSA/CMVSS
- (20C) SOUND SYS. DLX. W/O-SURROUND
- (WIN) WINNEBAGO ONLY
- (ITA) ITASCA ONLY
- (64H) HYDRAULIC LEVELING JACKS
- (16M) FORD CHASSIS 20,500#/V10 ENG
- (611) WTR HTR-RR AUTO/MOTORAID
- (36N) FANS-DEFROSTER, AUXILIARY
- (27E) CODES/STANDARDS-CMVSS
- (20F) DELUXE SOUND SYSTEM-WITHOUT

FIRST USED	
03 F&G SERIES	
DO NOT SCALE DRAWING	
TITLE: WIRING INSTL-FRONT END	
SHEET 3	PART NO 141293

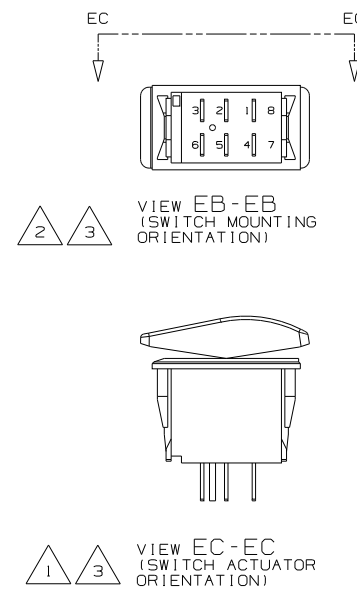
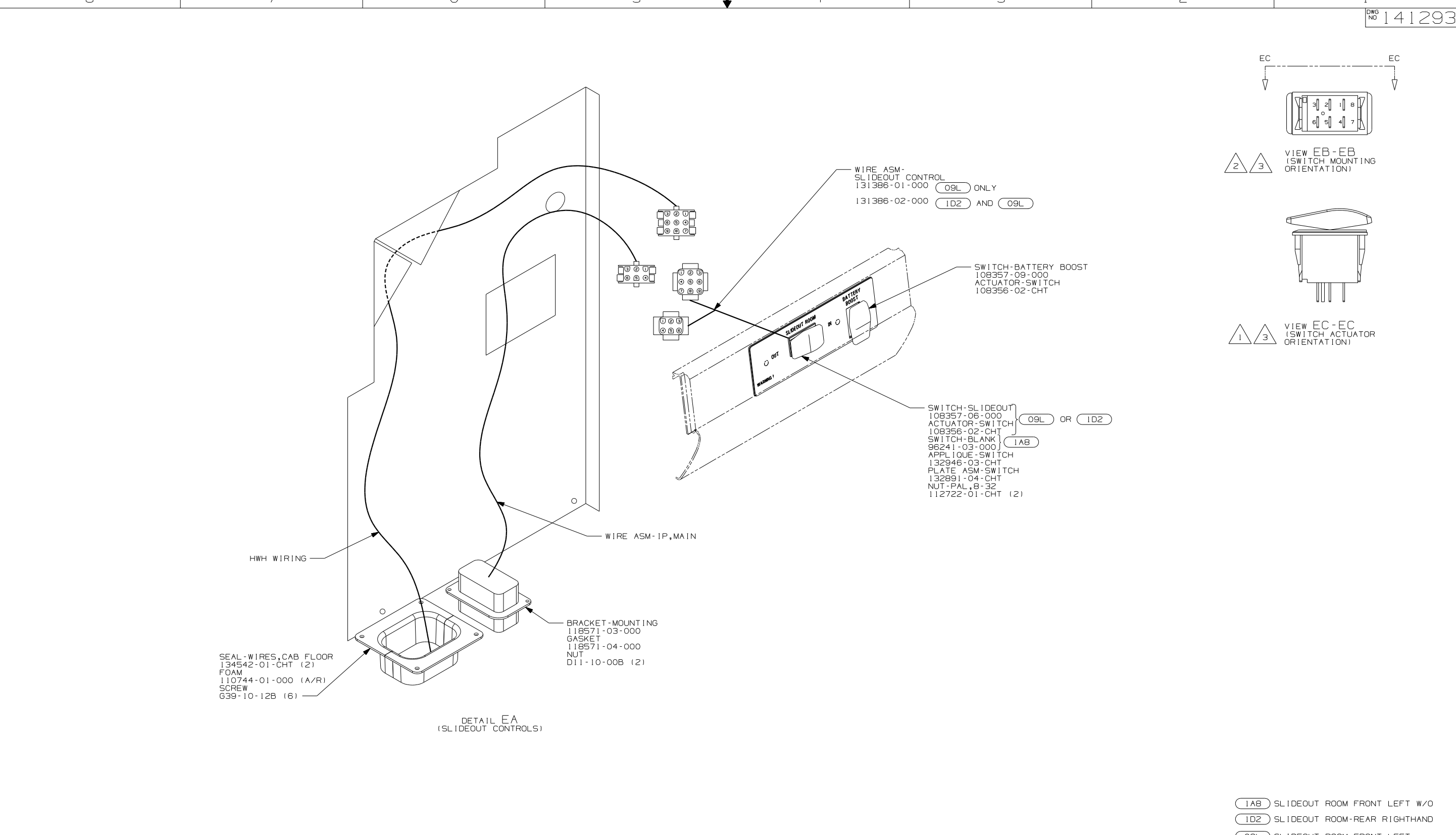


- 16 WITHOUT (57M)
- 15 SEND CHASSIS SUPPLIED LOOM TO WIRE PREP FOR MODIFICATIONS AS NOTED IN WIRE ASM-OVERDRIVE SWITCH.
- 14 F-SERIES ONLY
- 13 G-SERIES ONLY
- 12 FOR USE WITH SHELLS WITHOUT (64H)
- 11 MOUNT ON TOP LEFT REAR CORNER OF PANEL-COVER,RADIATOR.
- 10 SEE LEVELING SYSTEM INSTL FOR ADDITIONAL INFORMATION.
- 9 CONNECT HOUSINGS TOGETHER.
- 8 SECURE IN DASH STEEL.
- 7 TIE ALONG WIRE ASM-MAIN WITH WIRE TIE 93147-01-000.
- 6 WITHOUT GENERATOR
- 5 WITH GENERATOR
- 4 COVER CLEAR LEGEND ON BEZEL WITH FILM 77031-01-000 (W/BLANK) OR 77031-03-000 (W/OPTION).
- 3 WITHOUT (36N)
- 2 WITHOUT (611)
- 1 CHASSIS SUPPLIED



- (1PW) WORKHORSE 18000 DSL EXP WARR
- (57M) LAMPS-FOG
- (1PR) WORKHORSE 22,000#
- (27E) CODES/STANDARDS-CMVSS
- (265) CODES/STANDARDS-CSA/CMVSS
- (64H) HYDRAULIC LEVELING JACKS
- (20C) SOUND SYS. DLX. W/O-SURROUND
- (1PM) WORKHORSE CHASSIS-18,000LB.
- (611) WTR HTR-RR AUTO/MOTORAID
- (36N) FANS-DEFROSTER, AUXILIARY
- (1PN) WORKHORSE 20,700#-19.5 TIRE
- (20F) DELUXE SOUND SYSTEM-WITHOUT

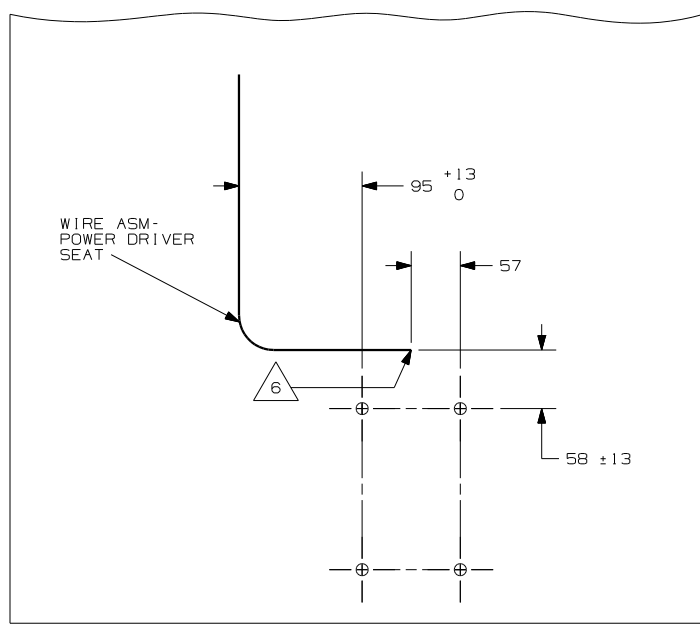
FIRST USED	
03 F&G SERIES	
DO NOT SCALE DRAWING	
TITLE:	
WIRING INSTL-FRONT END	
SHEET 4	PART NO 141293



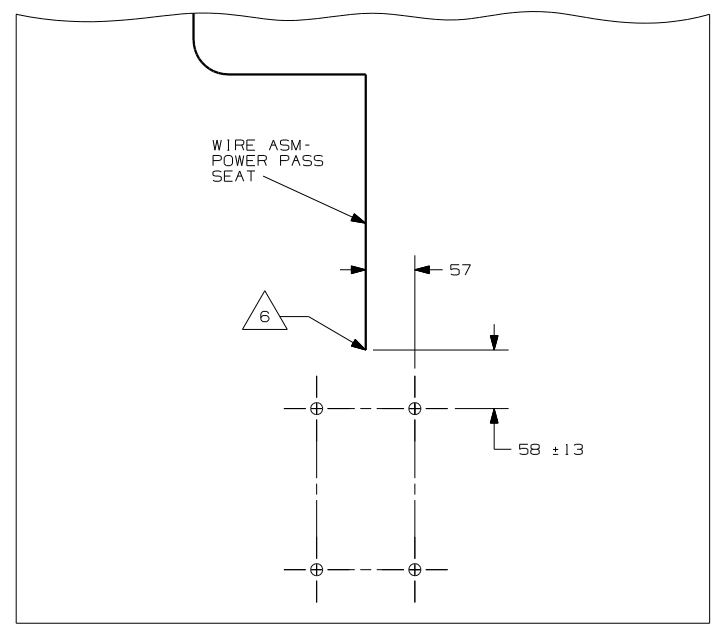
- NOTES:
- 3 SWITCH SHOWN WITHOUT WIRE ASM HOUSING CONNECTED.
 - 2 SAME FOR ALL SWITCHES EXCEPT GENERATOR SWITCH AND AUX START SWITCH.
 - 1 SAME FOR ALL DASH SWITCHES.

- (1A8) SLIDEOUT ROOM FRONT LEFT W/O
- (1D2) SLIDEOUT ROOM-REAR RIGHTHAND
- (09L) SLIDEOUT ROOM FRONT LEFT

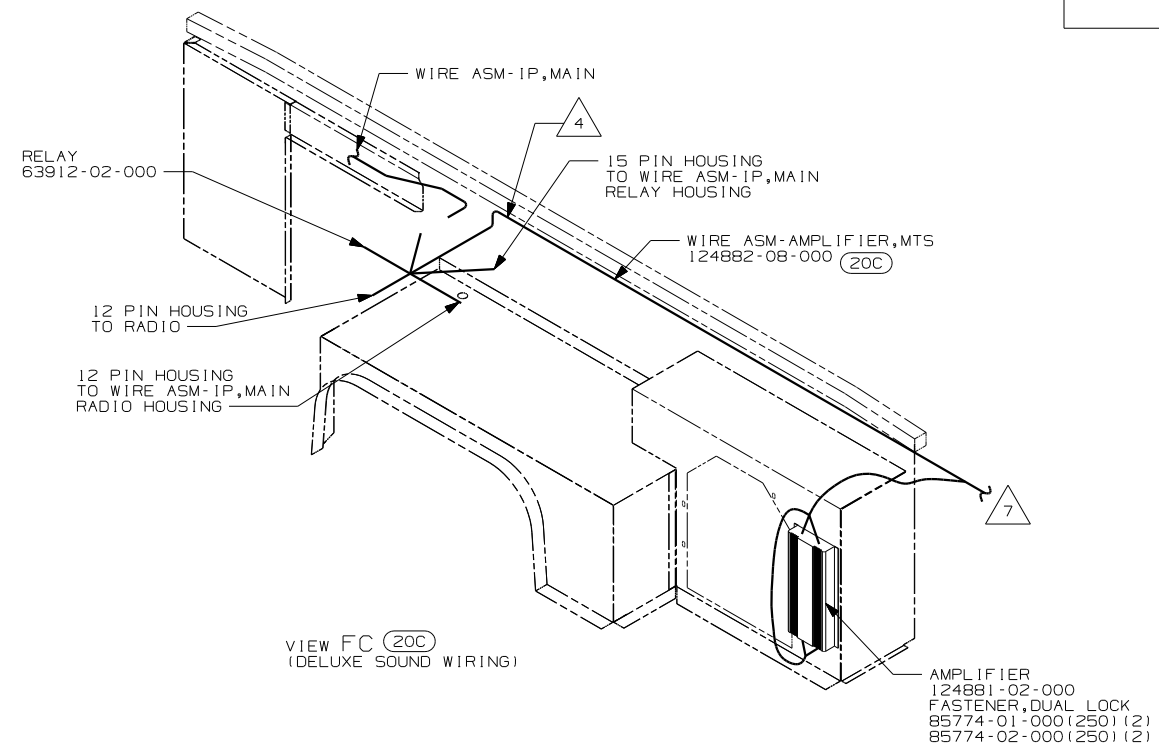
FIRST USED	
03 F&G SERIES	
DO NOT SCALE DRAWING	
TITLE:	
WIRING INSTL-FRONT END	
SHEET 5	PART NO 141293



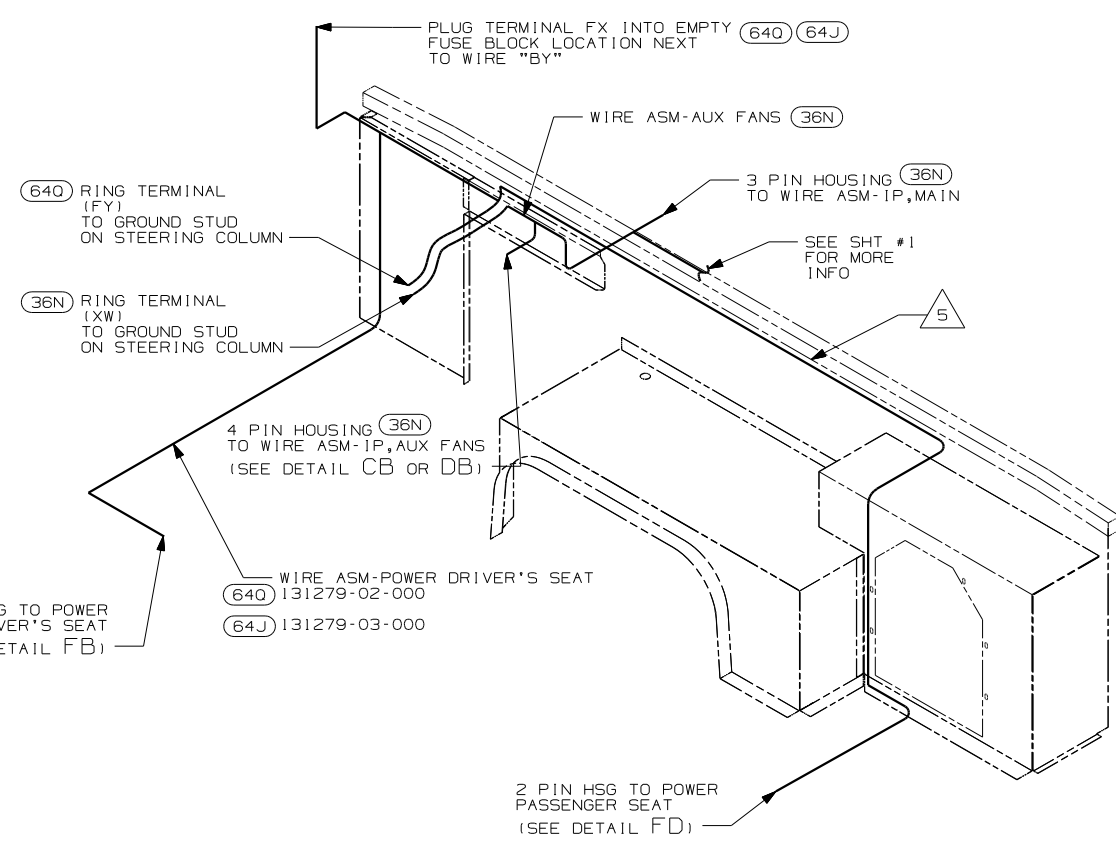
DETAIL FB (640)



DETAIL FD (64J)



VIEW FC (20C)
(DELUXE SOUND WIRING)

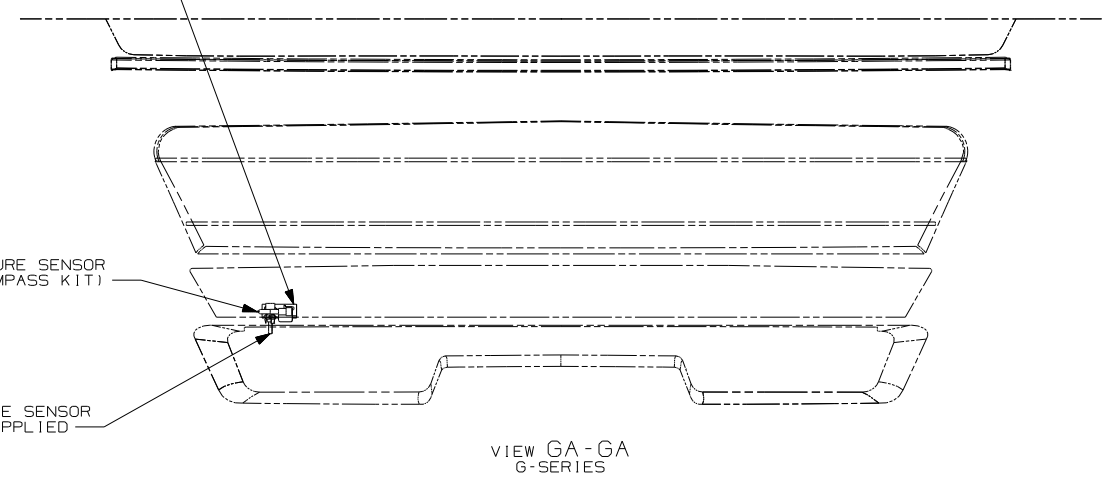
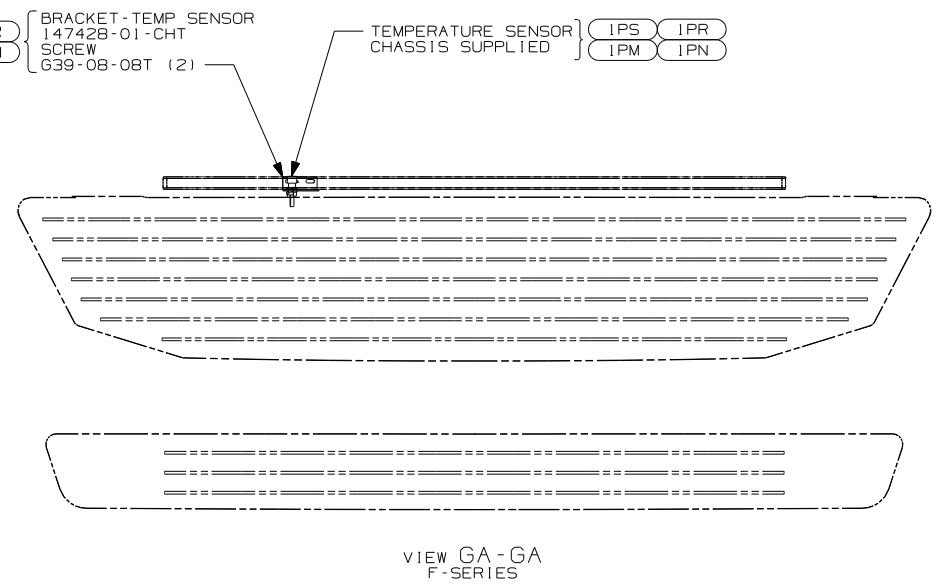
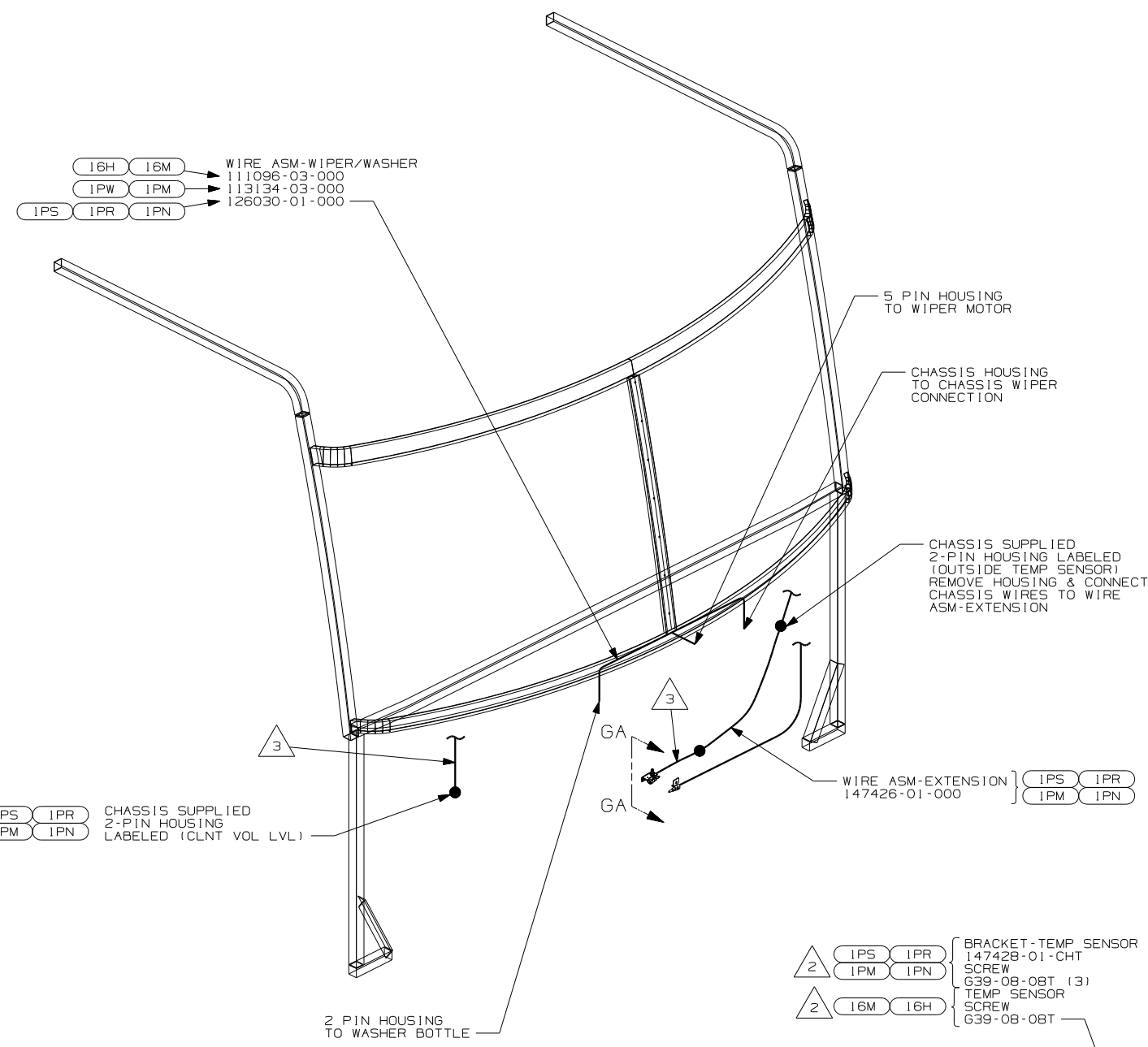


VIEW FC (36N) (640)
(AUXILIARY WIRING)

- NOTES:
- 8 PLUG RCA CABLES INTO PORTS LABELED STEREO TV.
 - 7 ROUTE RCA CABLE AND TWO PIN HOUSING UP RIGHT A-PILLAR TO TV AND CENTER CHANNEL SPACER.
 - 6 LEAVE 675, ±50MM OF WIRE AT PEDESTAL.
 - 5 ROUTING WITH (64J) ONLY.
 - 4 ROUTE WITH WIRE ASM-IP, MAIN
 - 3 EDGE OF LABEL TO HANG JUST BELOW BOTTOM OF DASH
 - 2 USE ON SHELL W/GENERATOR.
 - 1 USE WITH SHELLS ONLY.

- (640) SEAT PED-6-WAY POWER DRIVER
- (40J) CB RADIO PREP
- (36N) FANS-DEFROSTER, AUXILIARY
- (64J) SEAT PED-6-WAY DR/PASS POWER
- (20C) SOUND SYS. DLX. W/O-SURROUND

FIRST USED	
03 F&G SERIES	
DO NOT SCALE DRAWING	
TITLE:	
WIRING INSTL-FRONT END	
SHEET 6	PART NO
	141293

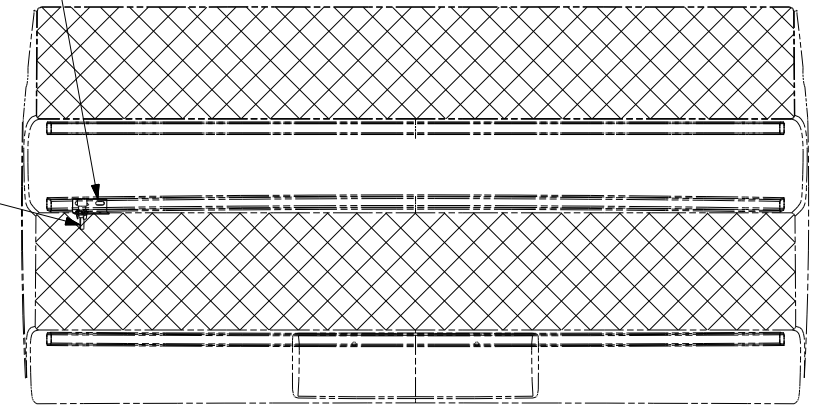
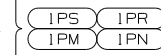
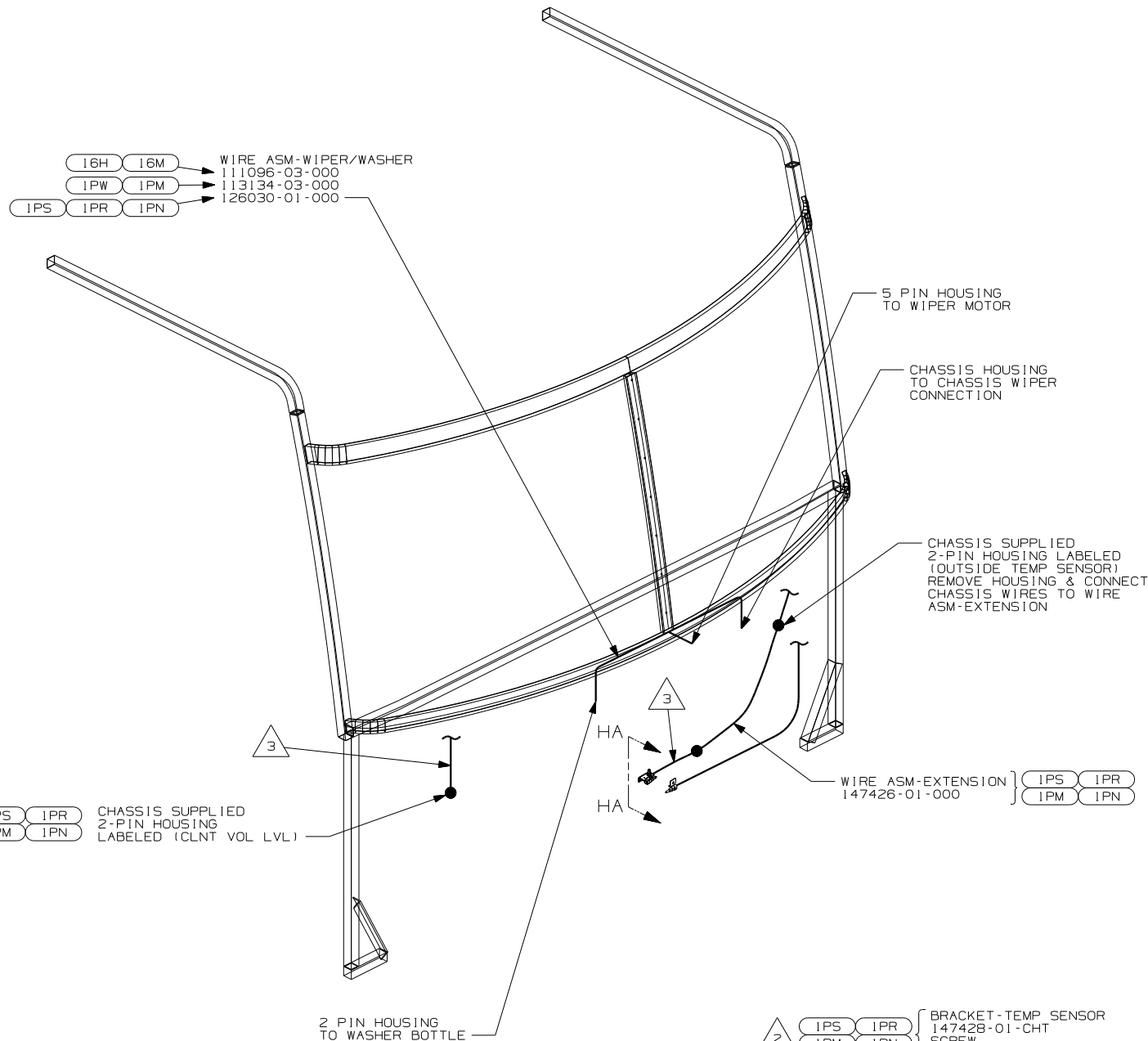


- 3 REMOVE CHASSIS SUPPLIED 2-PIN HOUSING LABELED (CLNT VOL LVL) LEAVING 150MM OF USABLE WIRE SO IT CAN BE ATTACHED TO ONE END OF WIRE ASM-EXTENSION, TEMP SENS AND PLUGGED INTO CHASSIS SUPPLIED TEMP SENSOR AND APPLY (2) 31876-03-000 BUTT SPLICES TO CUT OFF CHASSIS WIRES.
- 2 MOUNT SENSOR OR SENSOR BRACKET TO HORIZONTAL TUBE ON FIBERGLASS AS SHOWN.
1. GATHER ALL EXCESS WIRE AFTER MAKING ALL CONNECTIONS AND BUNDLE AND SECURE WITH TIE-WIRE 8343-01-000 OR 93147-01-000.

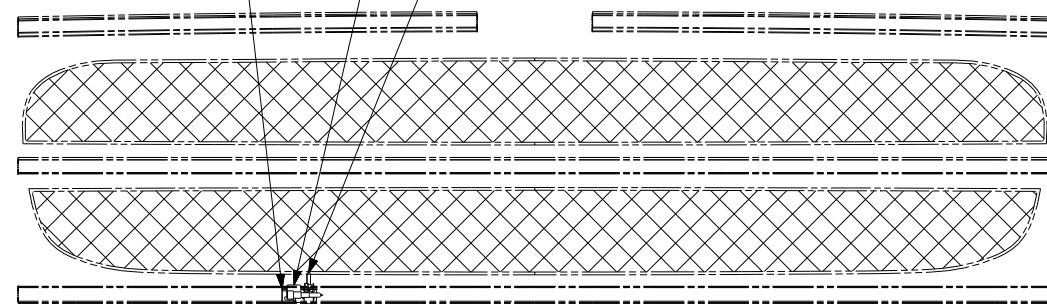
- WIN WINNEBAGO ONLY
- 1PS WORKHORSE 22,000#-22.5 TIRE
- 1PR WORKHORSE 22,000#-19.5 TIRE
- 16H FORD CHASSIS 18,000/V10 ENG
- 1PN WORKHORSE 20,700#
- 16M FORD CHASSIS 20,500#/V10 ENG
- 1PM WORKHORSE CHASSIS-18,000LB.

WIN	
FIRST USED	
03 F&G SERIES	
DO NOT SCALE DRAWING	
TITLE:	
WIRING INSTL-FRONT END	
SHEET 7	PART NO 141293

NOTES:



VIEW HA-HA F-SERIES



VIEW HA-HA G-SERIES

3 REMOVE CHASSIS SUPPLIED 2-PIN HOUSING LABELED (CLNT VOL LVL) LEAVING 150MM OF USABLE WIRE SO IT CAN BE ATTACHED TO ONE END OF WIRE ASM-EXTENSION, TEMP SENS AND PLUGGED INTO CHASSIS SUPPLIED TEMP SENSOR AND APPLY (2) 31876-03-000 BUTT SPLICES TO CUT OFF CHASSIS WIRES.

2 MOUNT SENSOR OR SENSOR BRACKET TO HORIZONTAL TUBE ON FIBERGLASS AS SHOWN.

1. GATHER ALL EXCESS WIRE AFTER MAKING ALL CONNECTIONS AND BUNDLE AND SECURE WITH TIE-WIRE 8343-01-000 OR 93147-01-000.

NOTES:

- (ITA) ITASCA ONLY
- (IPS) WORKHORSE 22,000#-22.5 TIRE
- (IPR) WORKHORSE 22,000#-19.5 TIRE
- (16H) FORD CHASSIS 18,000#/V10 ENG
- (IPN) WORKHORSE 20,700#
- (IPM) WORKHORSE CHASSIS-18,000LB.
- (16M) FORD CHASSIS 20,500#/V10 ENG

FIRST USED	
03 F&G SERIES	
DO NOT SCALE DRAWING	
TITLE: WIRING INSTL-FRONT END	
SHEET 8	PART NO 141293