



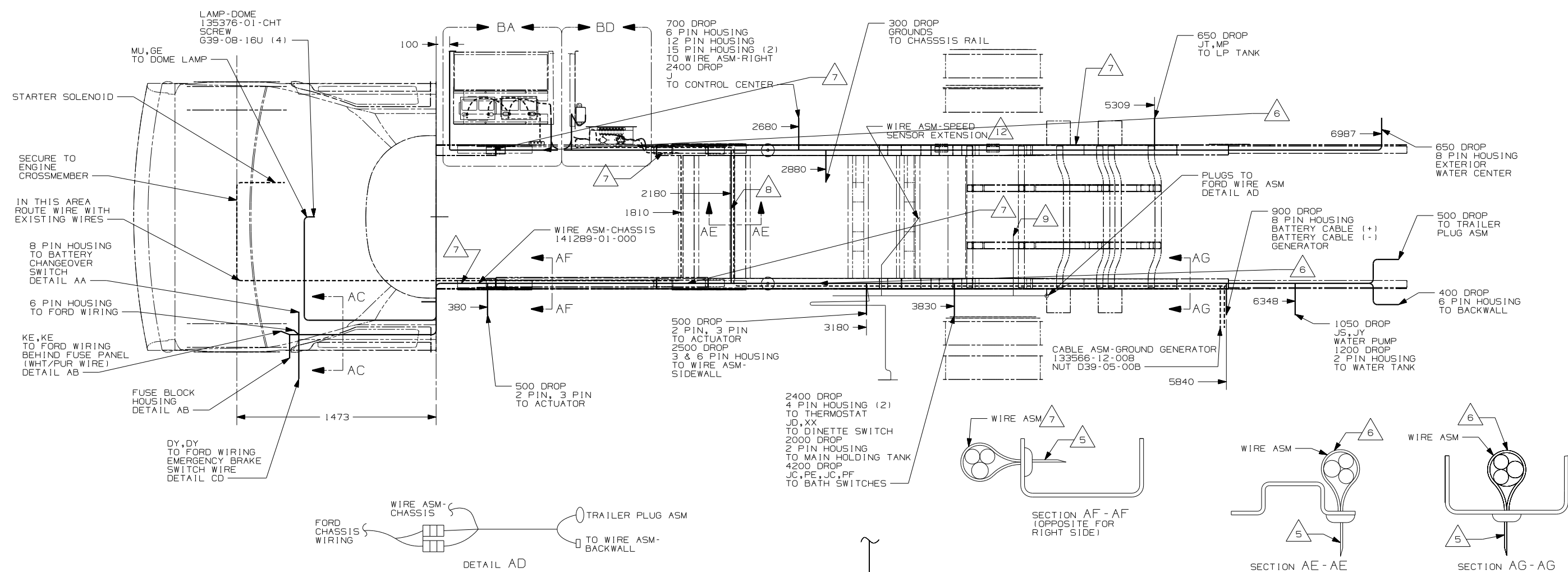
DANGER

Danger of electrical shock, burns or death. Always remove all power sources before attempting any repair, service or diagnostic work. Power can be present from shore power, generator, inverter or battery. All power sources must be disabled and secured before performing any service.



CAUTION

If you lack the skills, tools or equipment to perform diagnostic or repair work leave such work to an authorized Winnebago Industries dealer or other qualified shop.



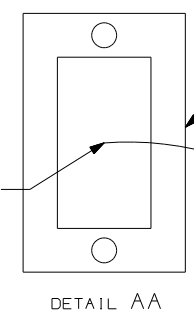
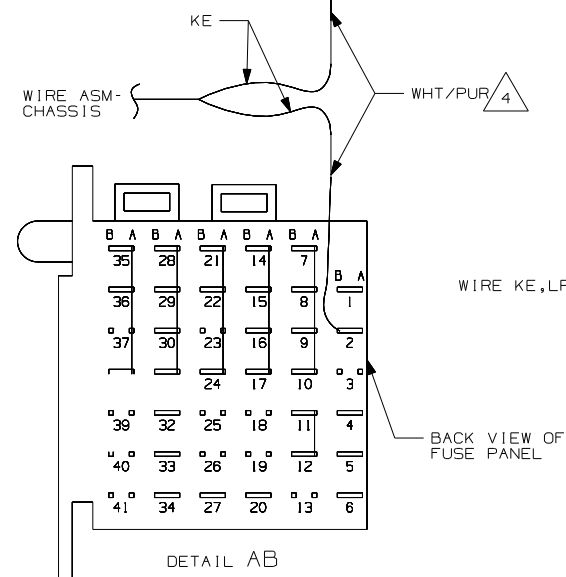
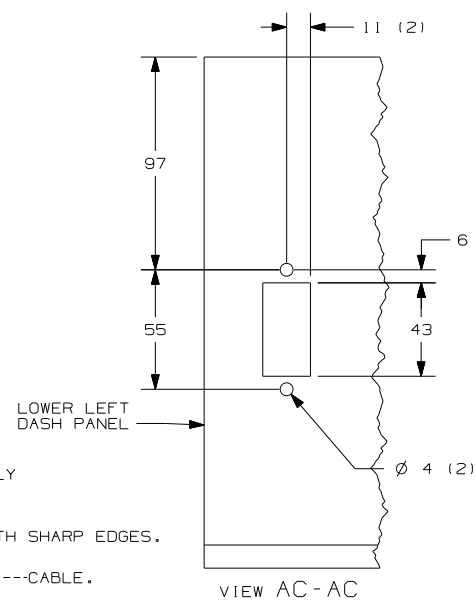
- 12 USE SURPLUS AUX FUEL TANK SENDER WIRE EXTENSION (CHASSIS SUPPLIED). IF UNAVAILABLE USE WIRE ASM-SPEED SENSOR 116894-01-000.
- 11 SPLIT AND EXTEND THE FORD WIRE ASM TO THE EMISSION SENSOR IN THE FUEL TANK.
- 10 SECURE DROP BACK ALONG RAIL WITHOUT (1E2).
- 9 USE AUX FUEL TANKS SENDER WIRE EXTENSION (CHASSIS SUPPLIED)
- 8 WIRES TO BE TIED TO CROSS MEMBER USING EXISTING HOLES.
- 7 WIRES TO BE TIED ON TOP OF RAIL USING EXISTING HOLES.
- 6 WIRES TO BE TIED INSIDE RAIL USING EXISTING HOLES.
- 5 CUT OFF EXCESS END OF WIRE TIES.
- 4 CUT WIRE AND RECONNECT AS SHOWN.

3. USE WIRE TIES 8343-04-000 AND 116673-01-000 APPROXIMATELY 600MM ON CENTER UNLESS OTHERWISE SPECIFIED.

2. SECURE CONDUIT 41953-01-000 OVER ALL WIRE IN CONTACT WITH SHARP EDGES.

1. LEGEND: --- FORD WIRING — WINNEBAGO WIRING - - - - - CABLE.

NOTES:

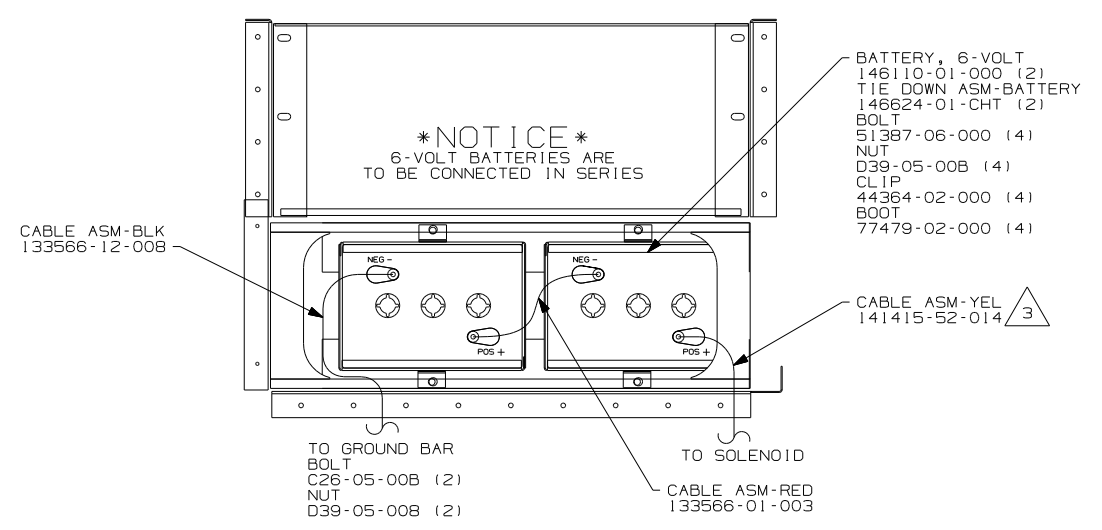
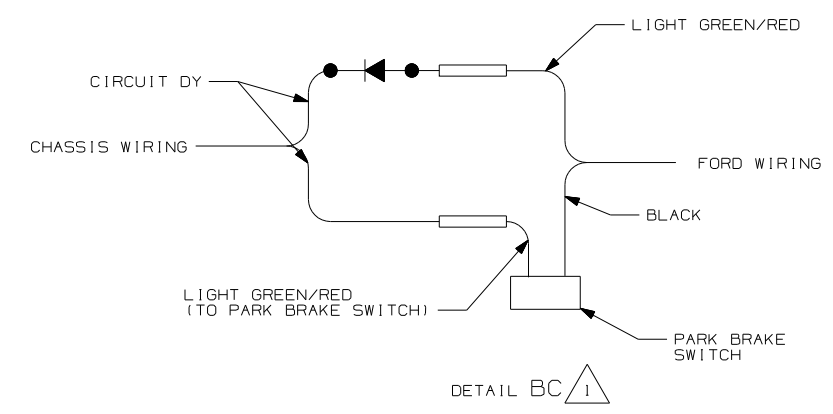
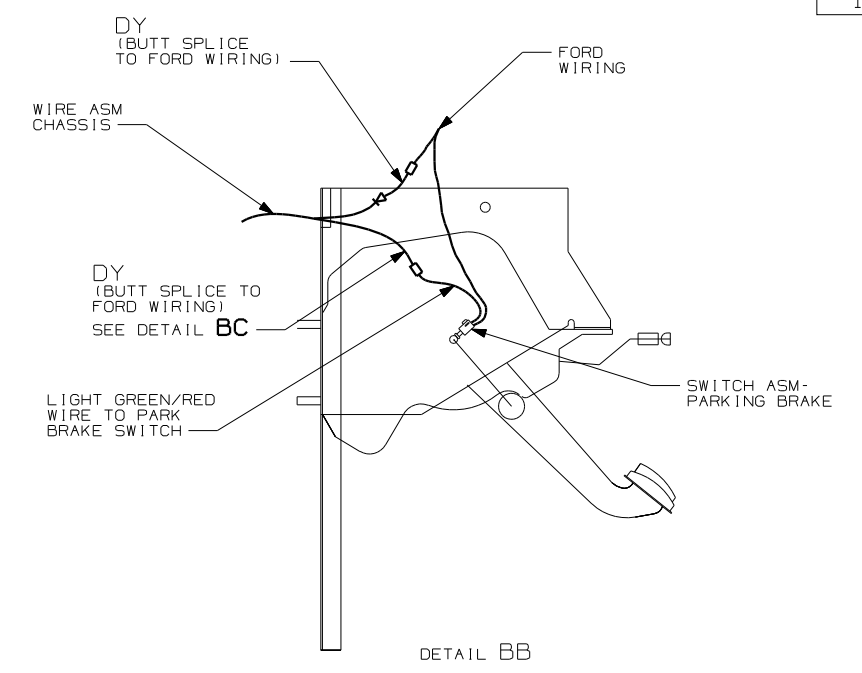
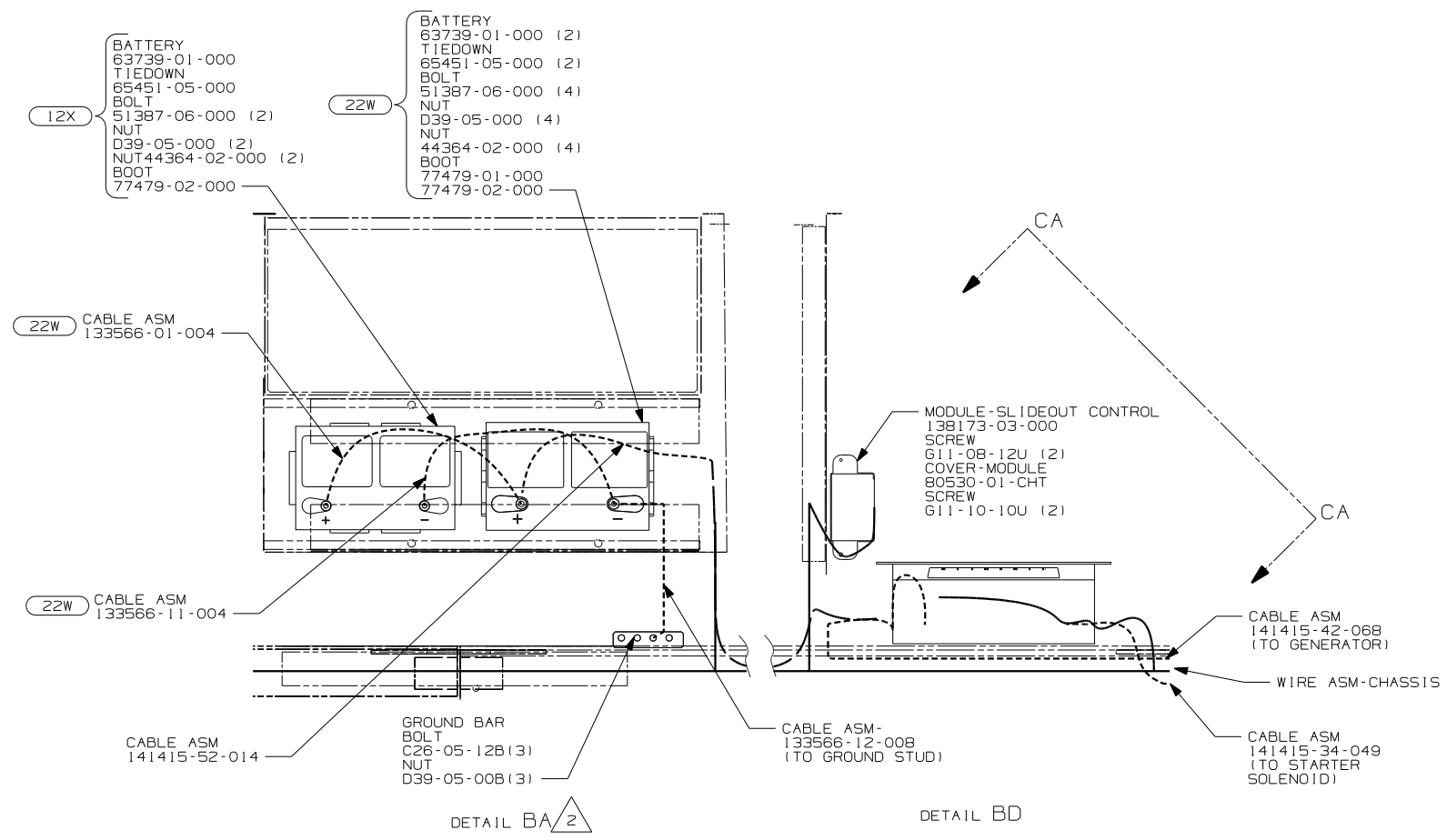


FOR ELECTRICAL CALLOUTS SEE DWG NO. 121339-01-000

- (16E) FORD CHASSIS 14,050 LB.GVWR
- (1E2) ENTRANCE STEP-ELEC.
- (265) CODES/STANDARDS-CSA/CMVSS
- (1B1) CODES/STANDARDS USA

WINNEBAGO.

DFTR	ORIG. DATE
CHKR	ALL DIMENSIONS ARE IN MILLIMETERS
P.E.	FIRST USED
M.E.	03 331C
DSNR	
UNSPECIFIED TOLERANCES ARE:	
WHOLE DIM (X)	MATERIAL:
ONE-PLACE (X.X)	
TWO-PLACE (X.XX)	
ANGLE	
THIRD ANGLE PROJECTION	
DO NOT SCALE DRAWING	
TITLE: WIRING INSTL-CHASSIS	
SHEET 1 OF 3	PART NO 141166
REF:	1 02/28/03

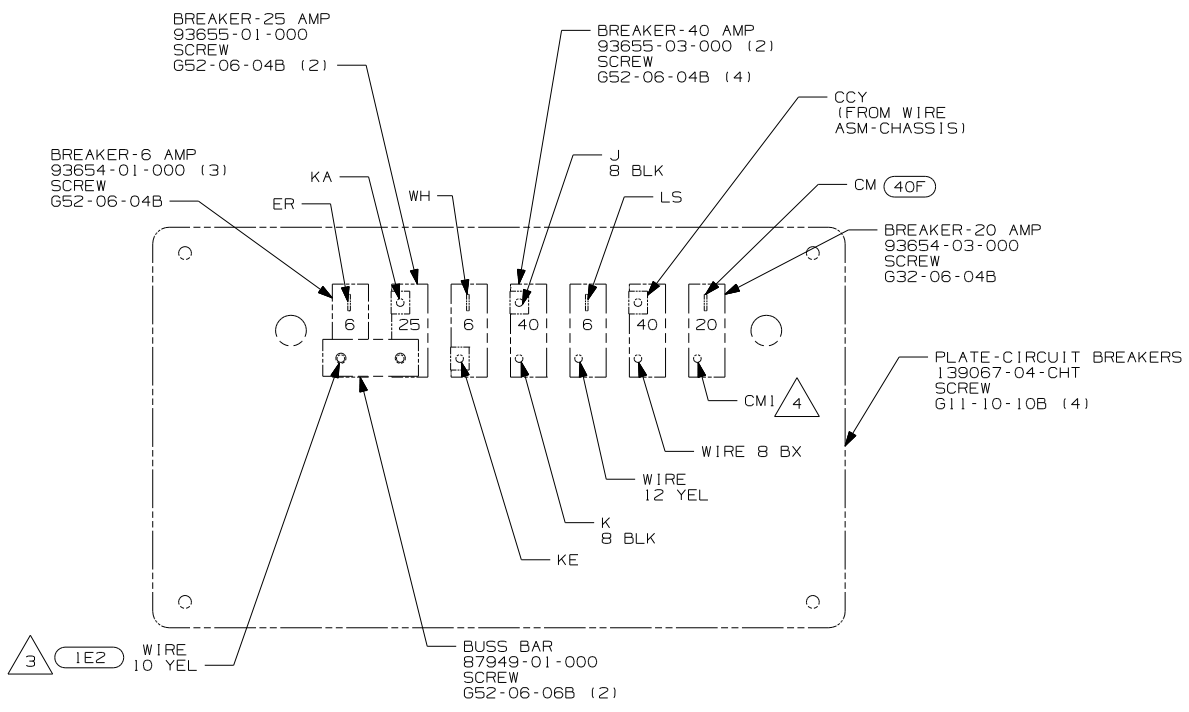


- NOTES:
- 3 LEAD IS MARKED WITH YELLOW TAPE.
 - 2 WITHOUT 644.
 - 1 CUT LIGHT GREEN/RED WIRE FROM PARK BRAKE SWITCH AND RECONNECT TO CIRCUIT DY OF CHASSIS ASM AS SHOWN.

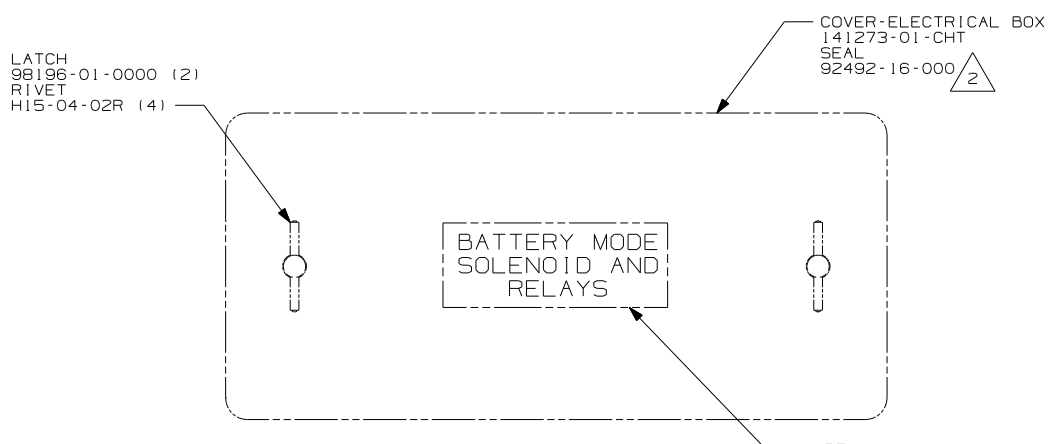
- 644 GREAT ALASKAN RENTAL PACKAGE
- 40F INVERTER-DC/AC-130W
- 22W BATTERY-TWO
- 12X BATTERY-ONE
- 16D FORD CHASSIS GAS
- 1E2 ENTRANCE STEP-ELEC.
- 265 CODES/STANDARDS-CSA/CMVSS
- 1B1 CODES/STANDARDS USA

FOR ELECTRICAL CALLOUTS SEE DWG NO. 121339-01-000

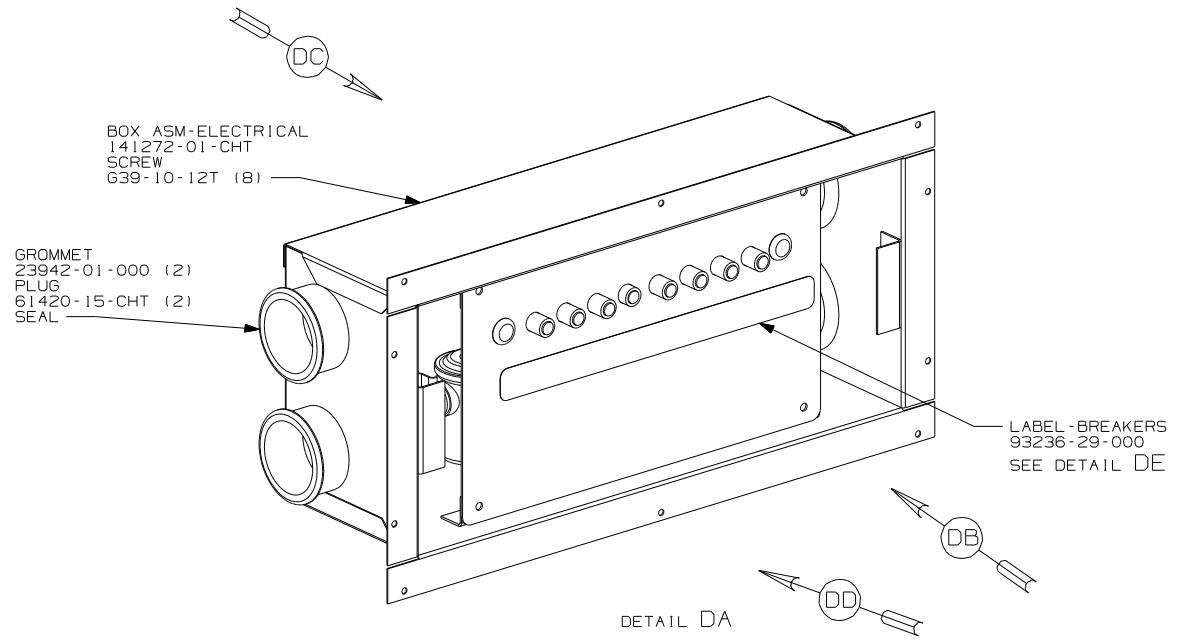
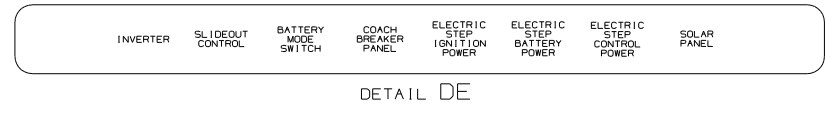
FIRST USED	03 331C
TITLE	DO NOT SCALE DRAWING
	WIRING INSTL-CHASSIS
SHEET 2	PART NO 141166



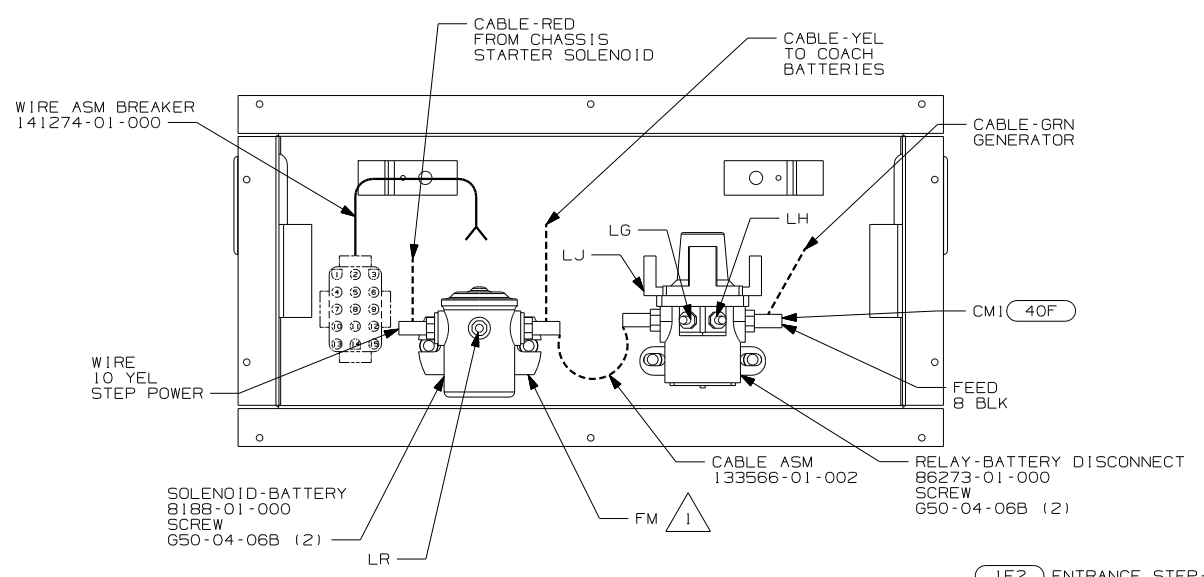
DETAIL DC



DETAIL DB



DETAIL DA



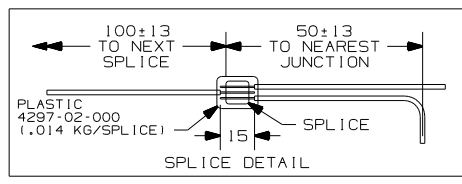
DETAIL DD

- 4 LEAD USED ONLY WITH (40F). WHEN LEAD IS NOT USED, PROTECT TERMINAL WITH TAPE 8363-01-000 AND SECURE TO MAIN WIRE ASM.
- 3 LEAD USED ONLY WITH (IE2). WHEN LEAD IS NOT USED, PROTECT TERMINAL WITH TAPE 8363-01-000 AND SECURE TO MAIN WIRE ASM.
- 2 PLACE AROUND ENTIRE PERIMETER OF DOOR WITH SEAM AT TOP.
- 1 SECURE WITH SOLENOID MOUNTING SCREW.

NOTES:

FOR ELECTRICAL TORQUE SPECIFICATIONS SEE DWG NO. 128783-01-000

X-X FOR ELECTRICAL CALLOUTS SEE DWG NO. 121339-01-000



- (IE2) ENTRANCE STEP-ELEC.
- (290) SOLAR PANEL
- (40F) INVERTER-DC/AC-130 WATT

FIRST USED	03 331C
DO NOT SCALE DRAWING	
TITLE:	WIRING INSTL-CHASSIS
SHEET 3	PART NO 141166