



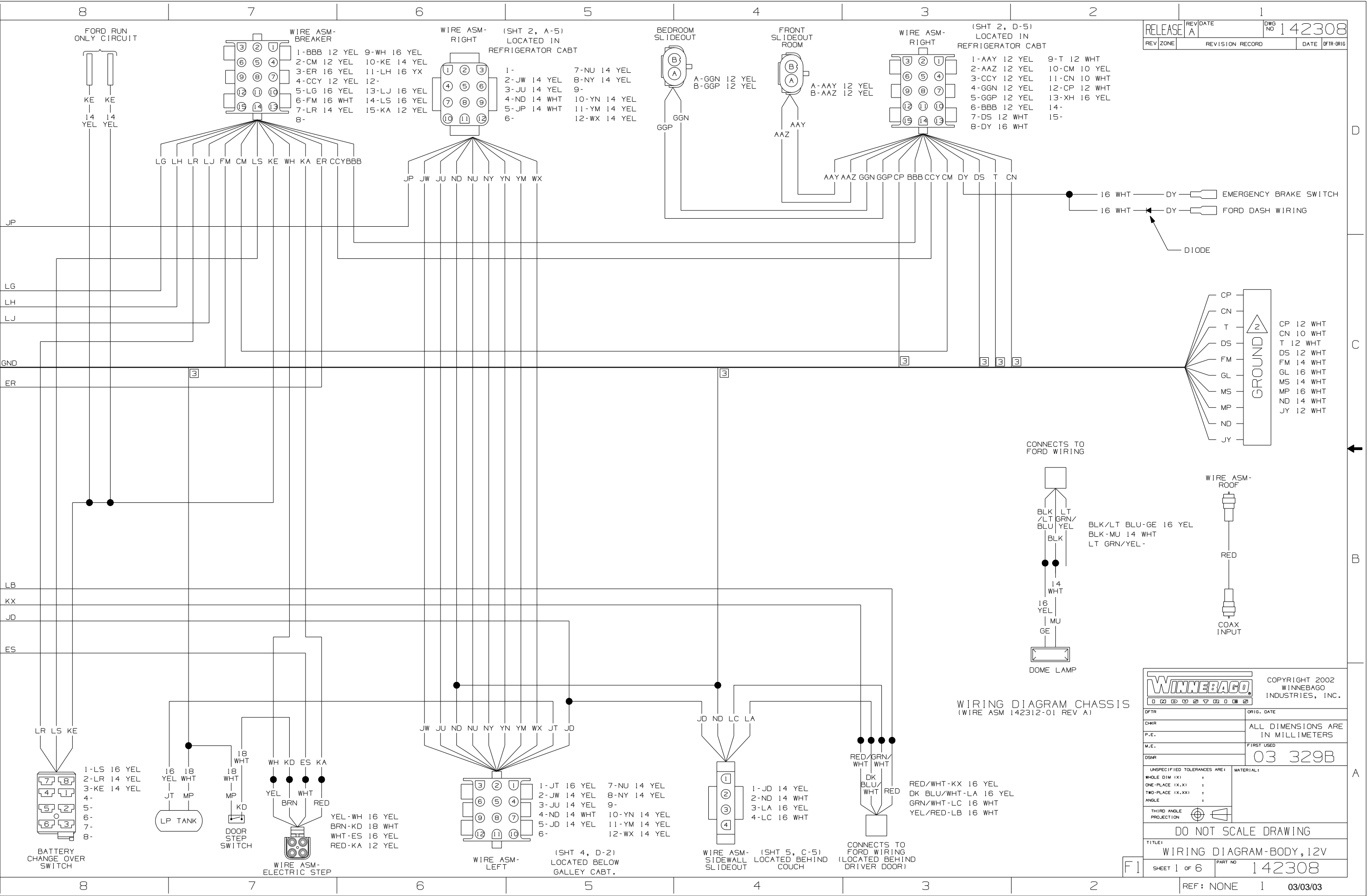
DANGER

Danger of electrical shock, burns or death. Always remove all power sources before attempting any repair, service or diagnostic work. Power can be present from shore power, generator, inverter or battery. All power sources must be disabled and secured before performing any service.



CAUTION

If you lack the skills, tools or equipment to perform diagnostic or repair work leave such work to an authorized Winnebago Industries dealer or other qualified shop.

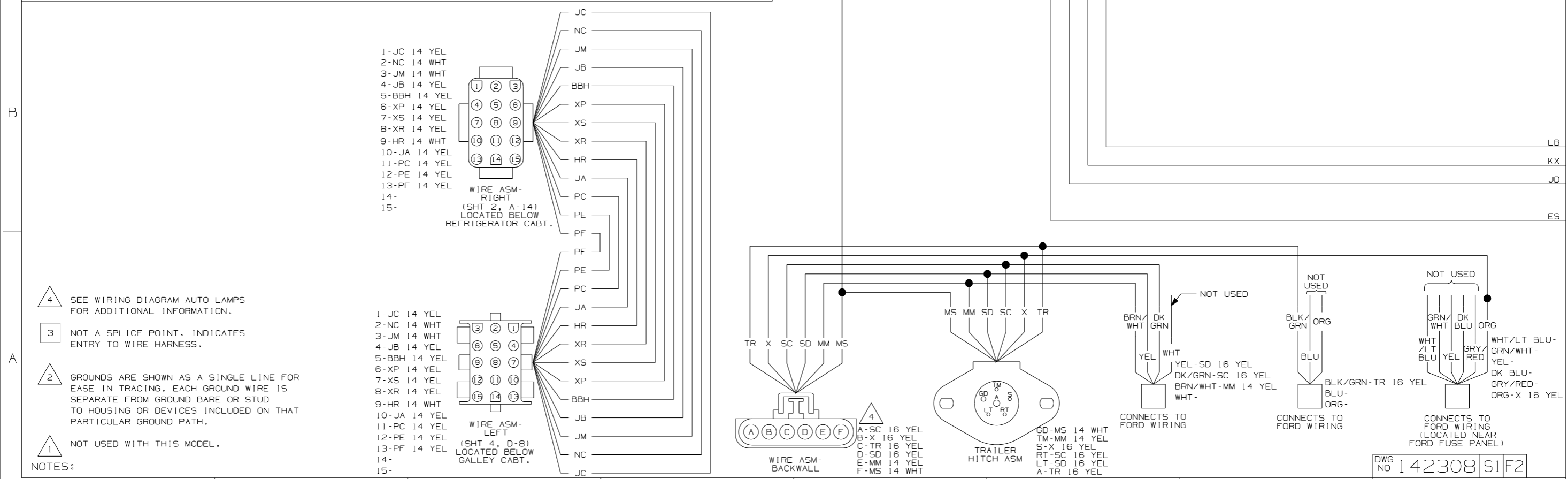
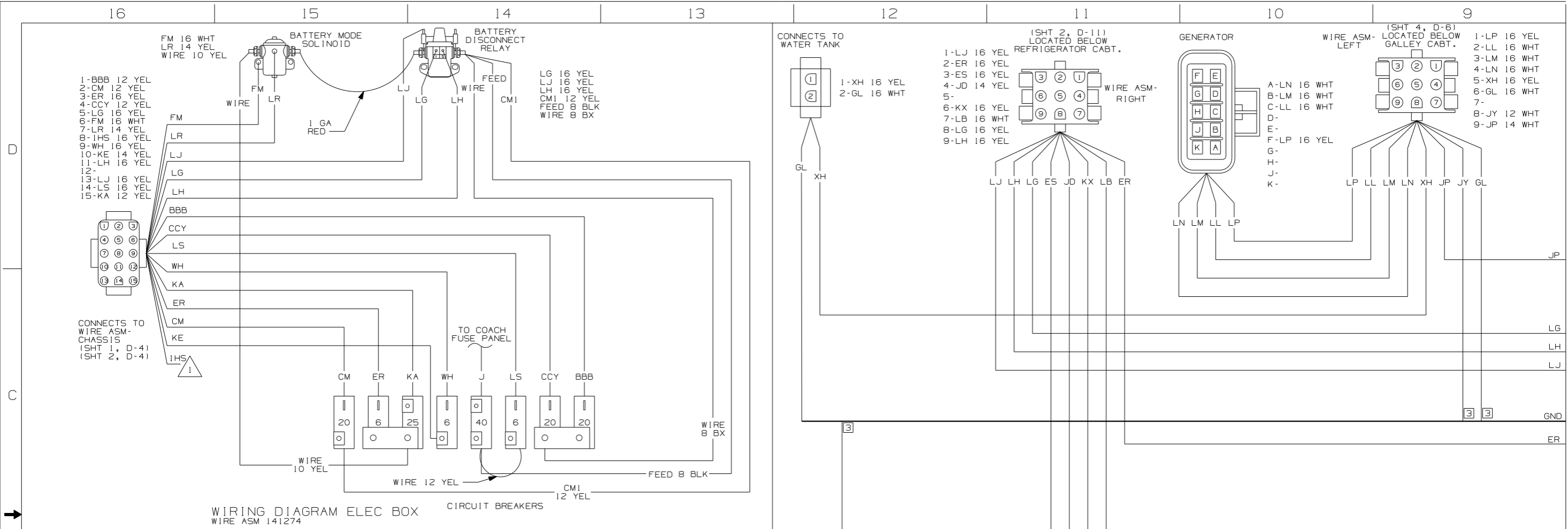


WIRING DIAGRAM CHASSIS
 (WIRE ASM 142312-01 REV A)

WINNEBAGO COPYRIGHT 2002 WINNEBAGO INDUSTRIES, INC.

DFTR	ORIG. DATE
CHRR	ALL DIMENSIONS ARE IN MILLIMETERS
P.E.	M.E.
DSNR	FIRST USED
03 329B	
UNSPECIFIED TOLERANCES ARE:	
WHOLE DIM (XX)	MATERIAL:
ONE-PLACE (X.X)	
TWO-PLACE (X.XX)	
ANGLE	
THIRD ANGLE PROJECTION	
DO NOT SCALE DRAWING	
TITLE: WIRING DIAGRAM-BODY, 12V	
SHEET 1 of 6	PART NO 142308

REF: NONE 1 03/03/03



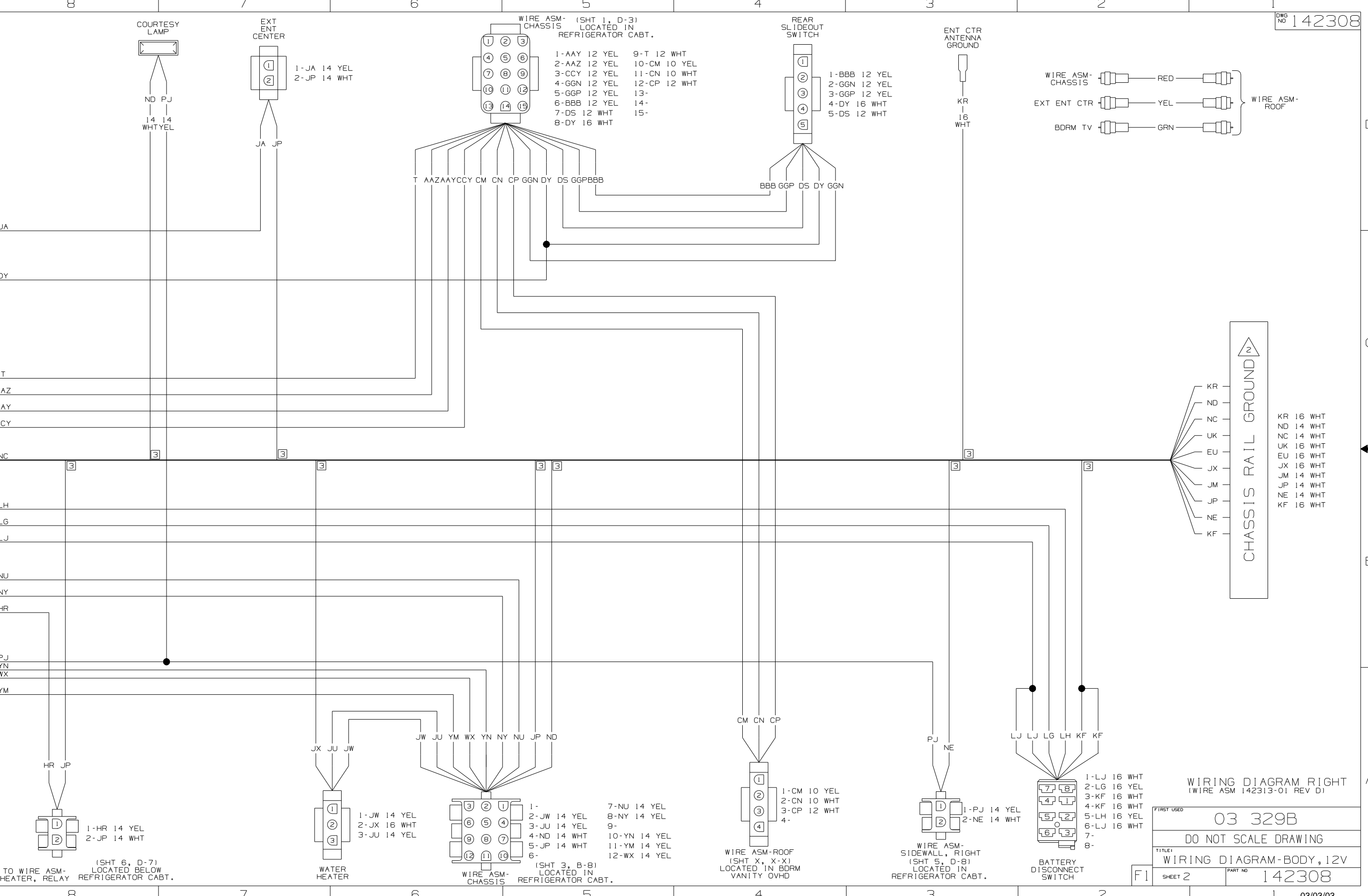
NOTES:

4 SEE WIRING DIAGRAM AUTO LAMPS FOR ADDITIONAL INFORMATION.

3 NOT A SPLICE POINT. INDICATES ENTRY TO WIRE HARNESS.

2 GROUNDS ARE SHOWN AS A SINGLE LINE FOR EASE IN TRACING. EACH GROUND WIRE IS SEPARATE FROM GROUND BARE OR STUD TO HOUSING OR DEVICES INCLUDED ON THAT PARTICULAR GROUND PATH.

1 NOT USED WITH THIS MODEL.



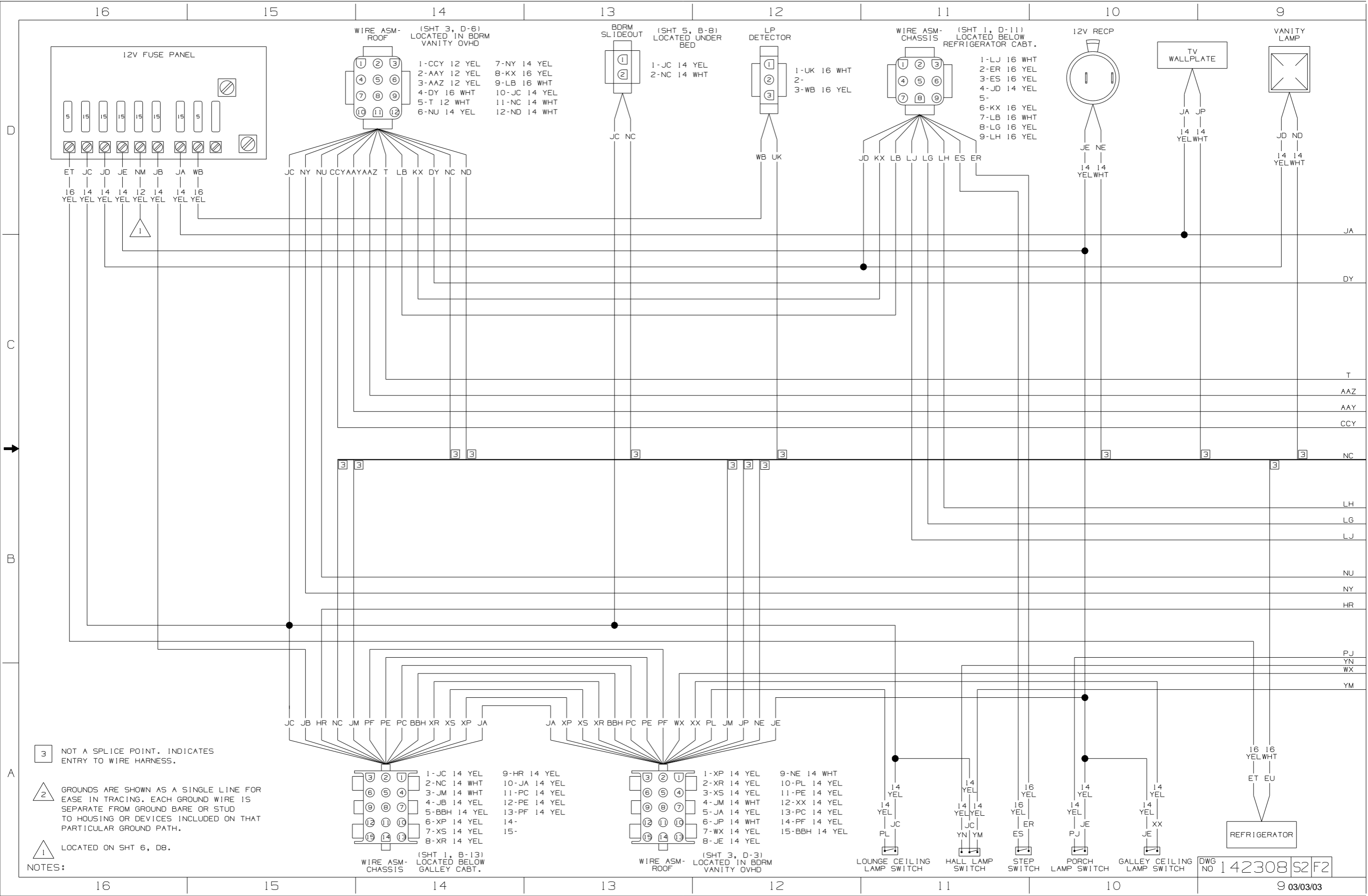
WIRING DIAGRAM RIGHT (WIRE ASM 142313-01 REV D)

FIRST USED 03 329B

DO NOT SCALE DRAWING

TITLE: WIRING DIAGRAM-BODY, 12V

SHEET 2 PART NO 142308



3 NOT A SPLICE POINT. INDICATES ENTRY TO WIRE HARNESS.

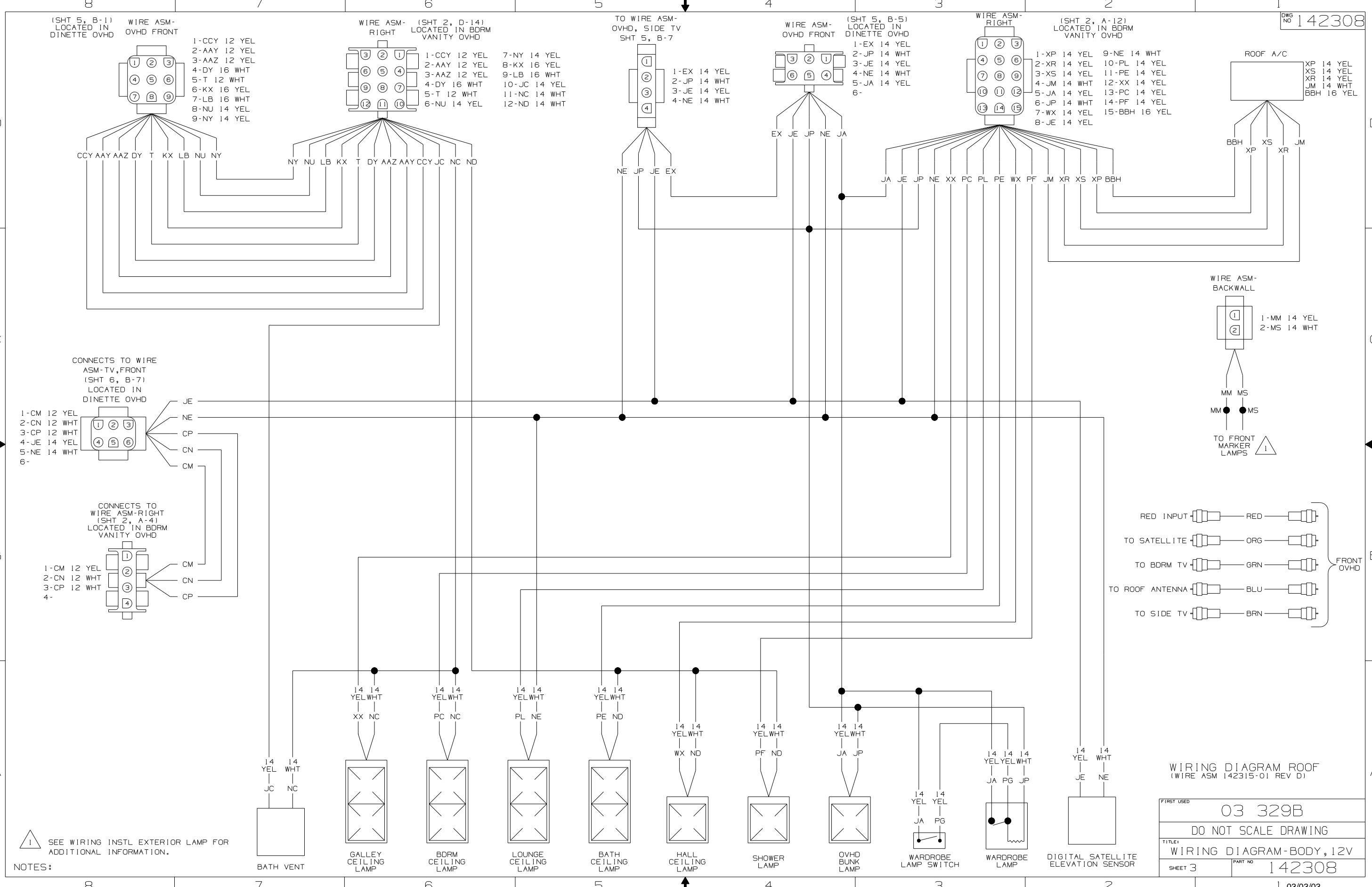
2 GROUNDS ARE SHOWN AS A SINGLE LINE FOR EASE IN TRACING. EACH GROUND WIRE IS SEPARATE FROM GROUND BARE OR STUD TO HOUSING OR DEVICES INCLUDED ON THAT PARTICULAR GROUND PATH.

1 LOCATED ON SHT 6, D8.

NOTES:

DWG NO 142308 S2 F2

9 03/03/03

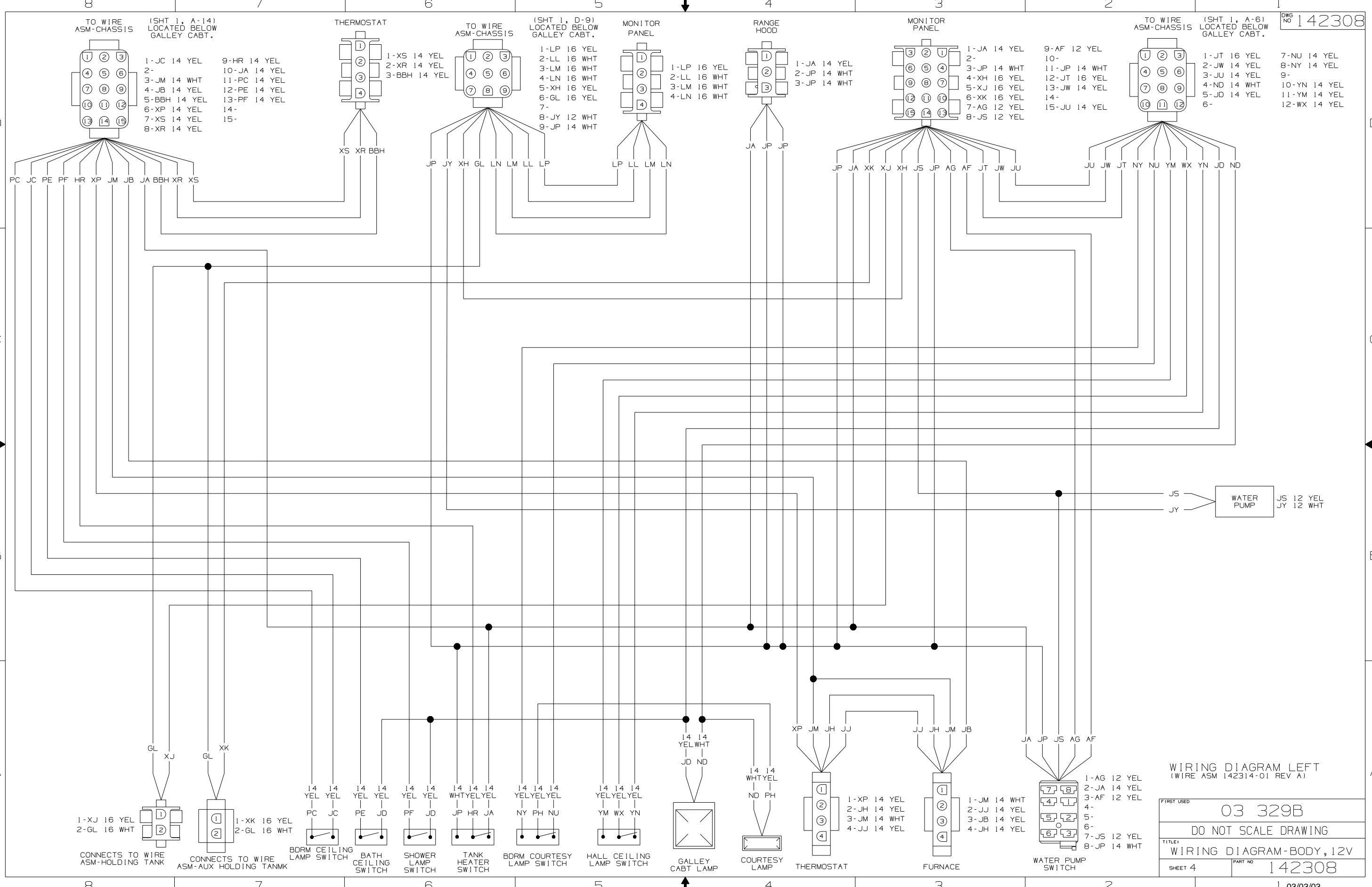


NOTES: SEE WIRING INSTL EXTERIOR LAMP FOR ADDITIONAL INFORMATION.

WIRING DIAGRAM ROOF
(WIRE ASM 142315-01 REV D)

FIRST USED	03 329B
DO NOT SCALE DRAWING	
TITLE:	WIRING DIAGRAM-BODY, 12V
SHEET 3	PART NO 142308

1 03/03/03



WIRING DIAGRAM LEFT
(WIRE ASM 142314-01 REV A)

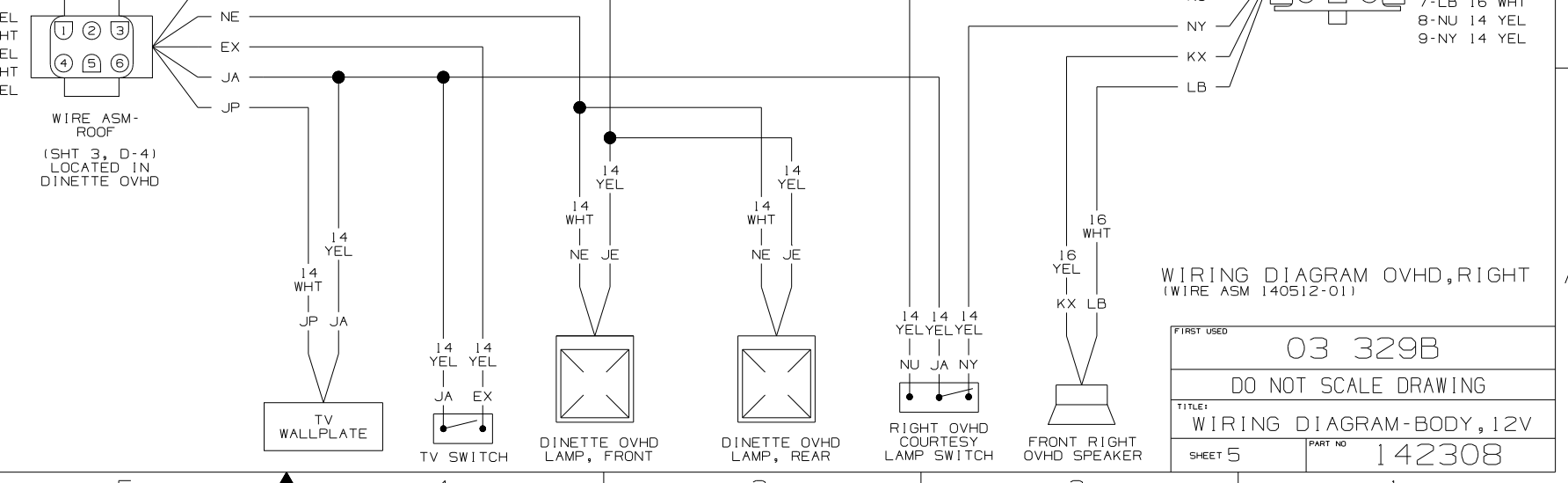
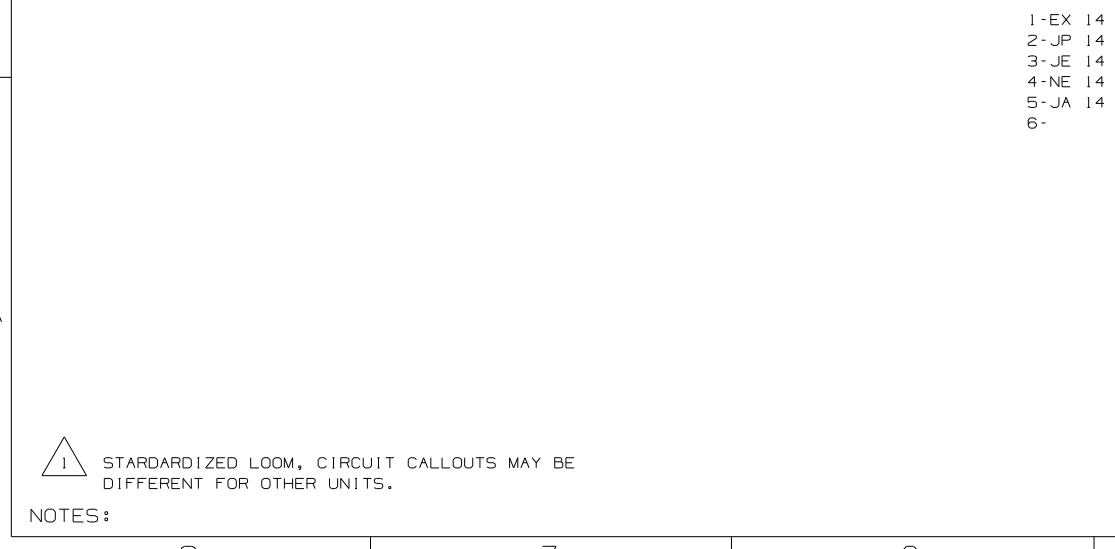
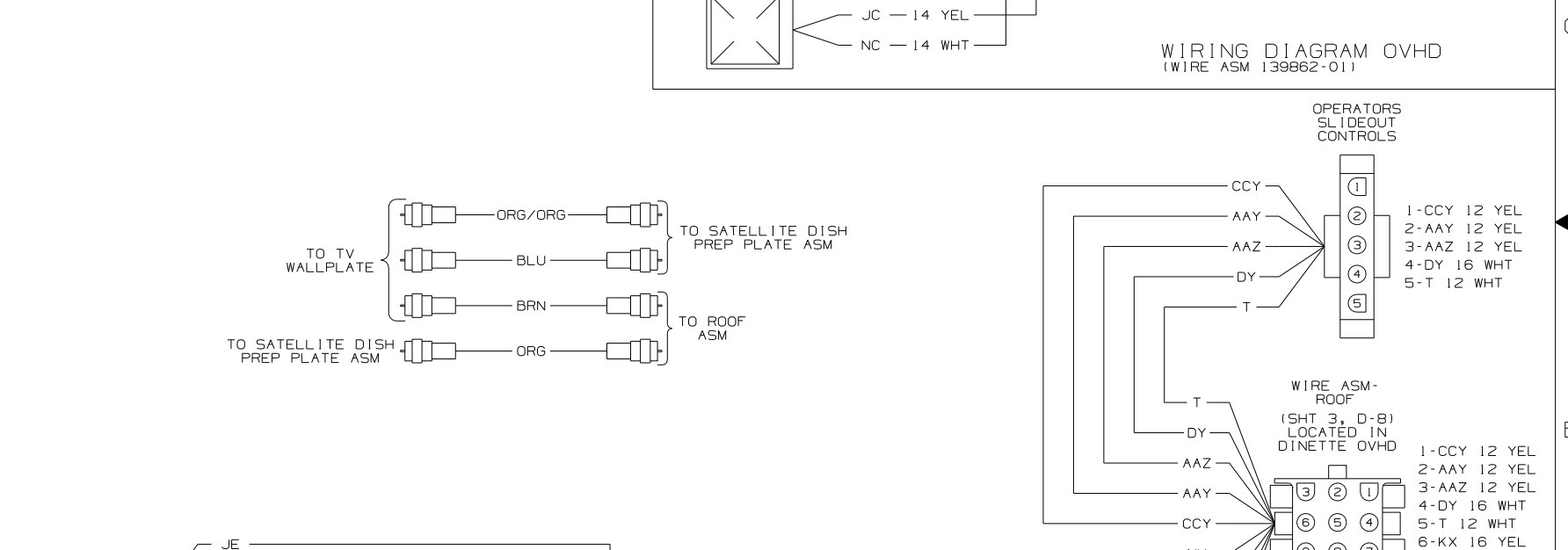
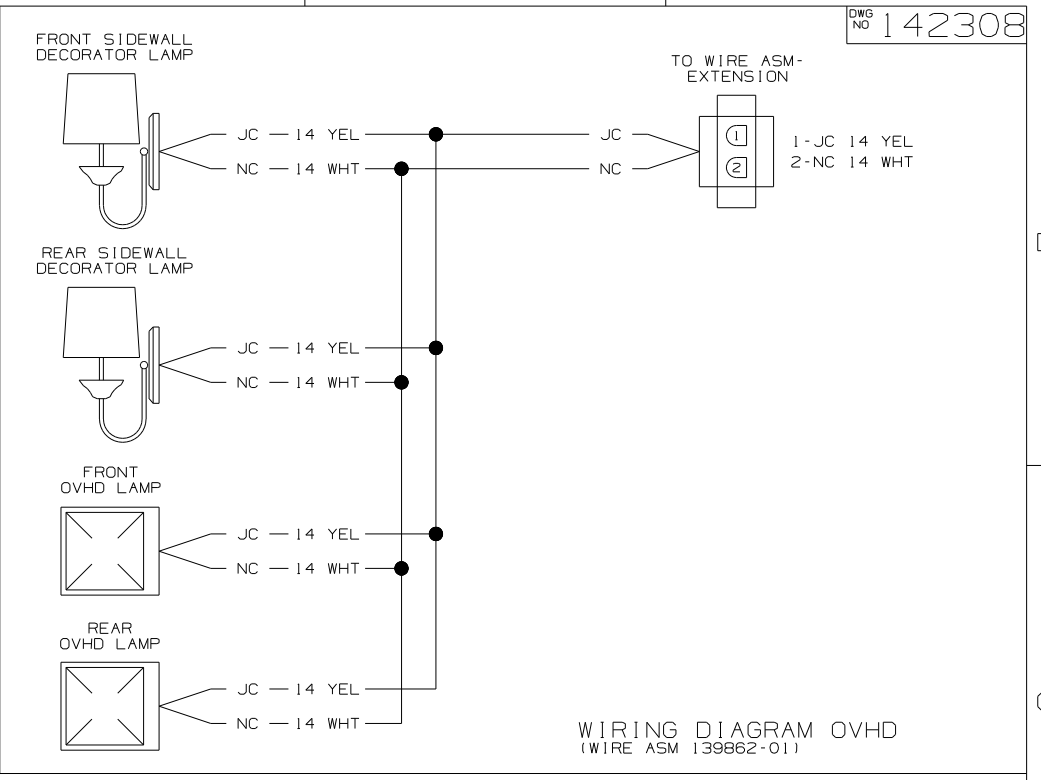
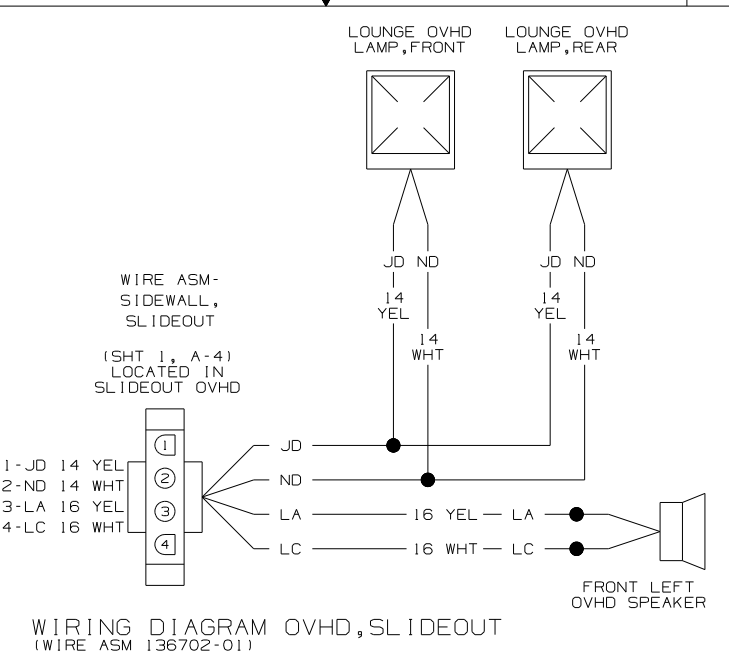
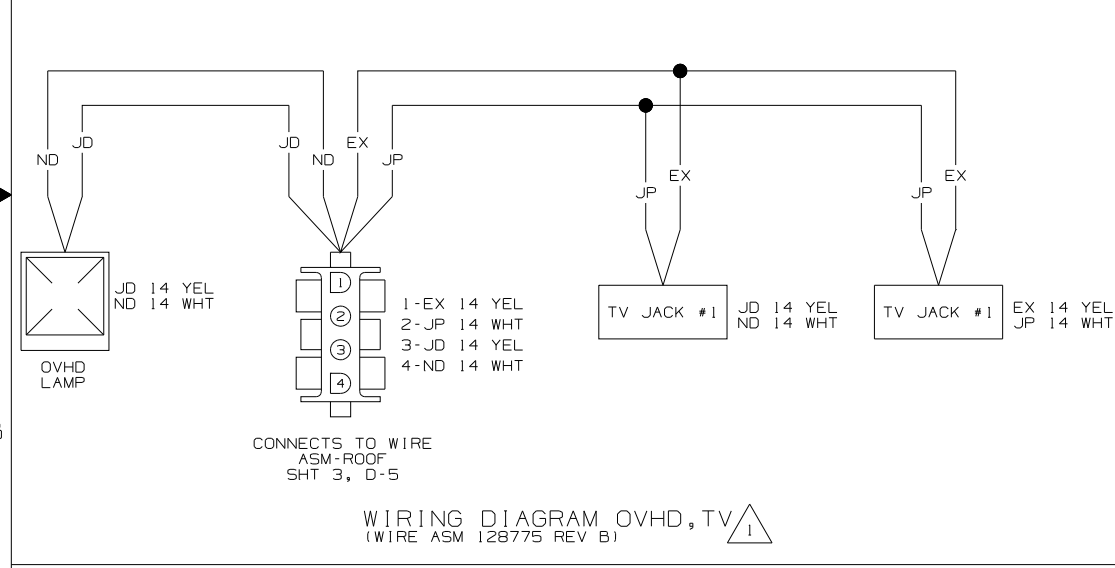
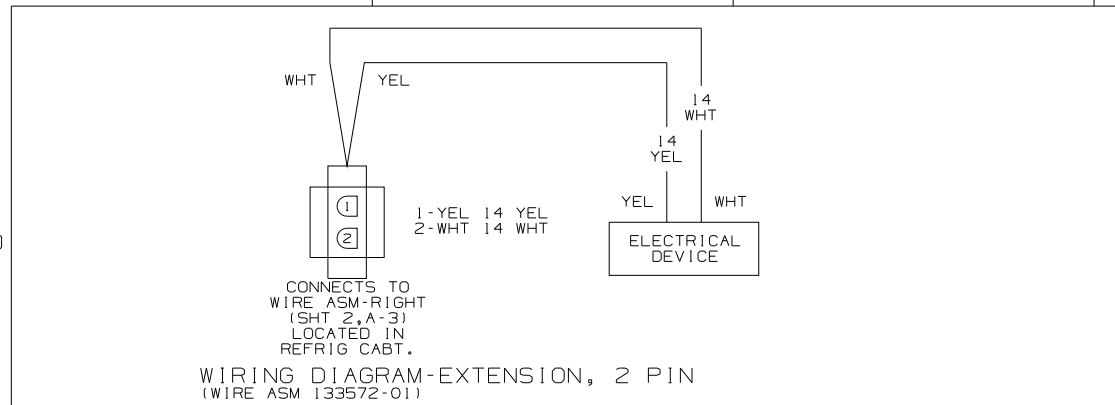
FIRST USED 03 329B

DO NOT SCALE DRAWING

TITLE: WIRING DIAGRAM-BODY, 12V

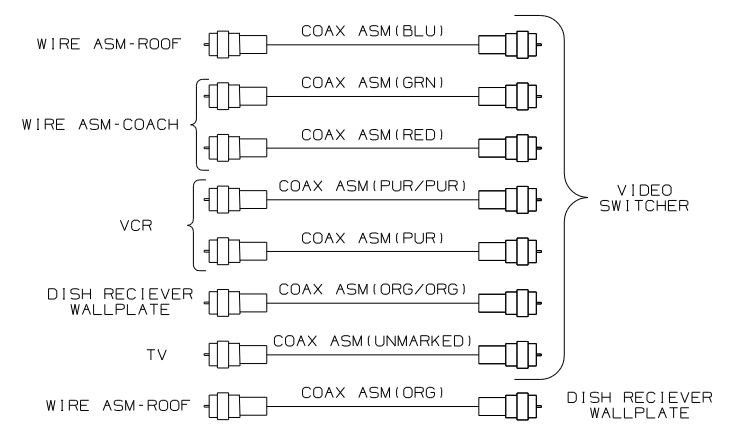
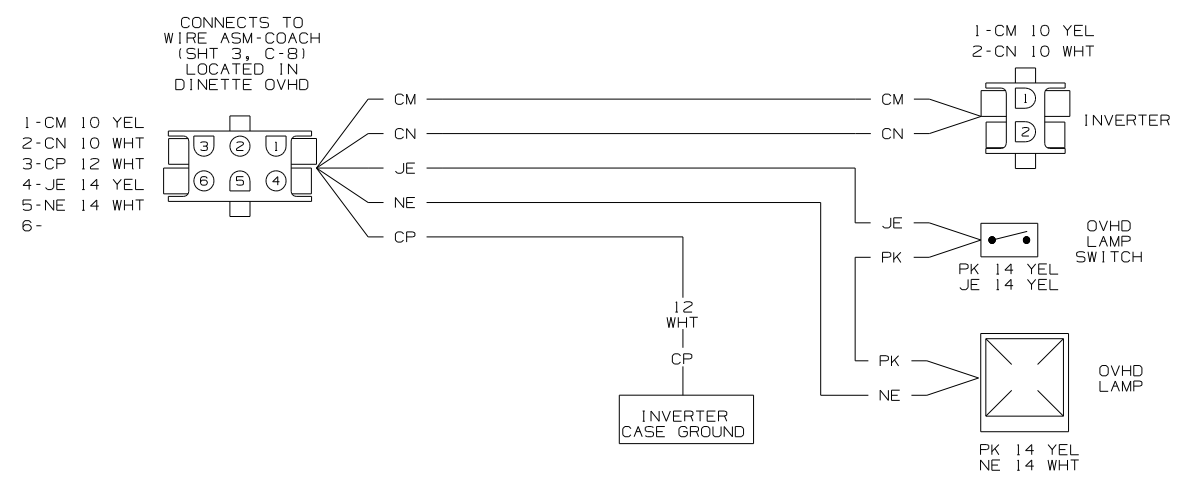
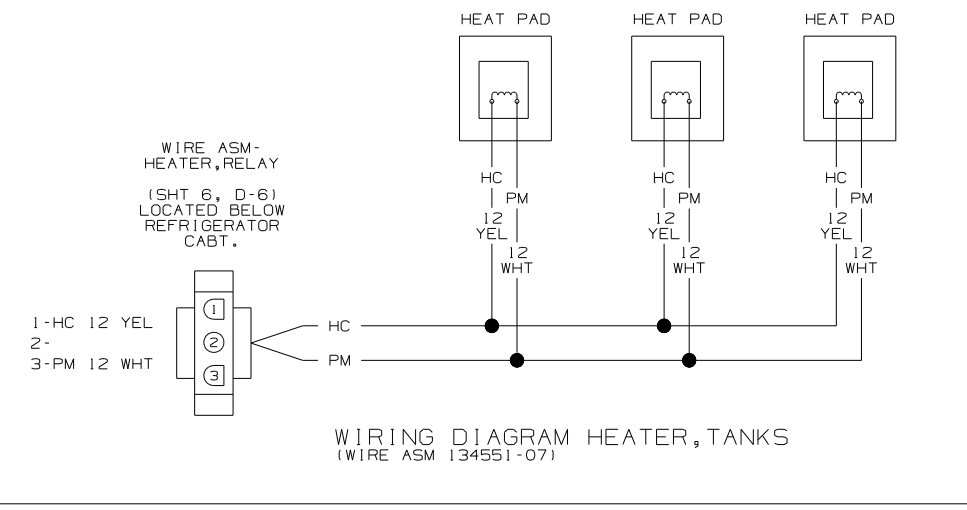
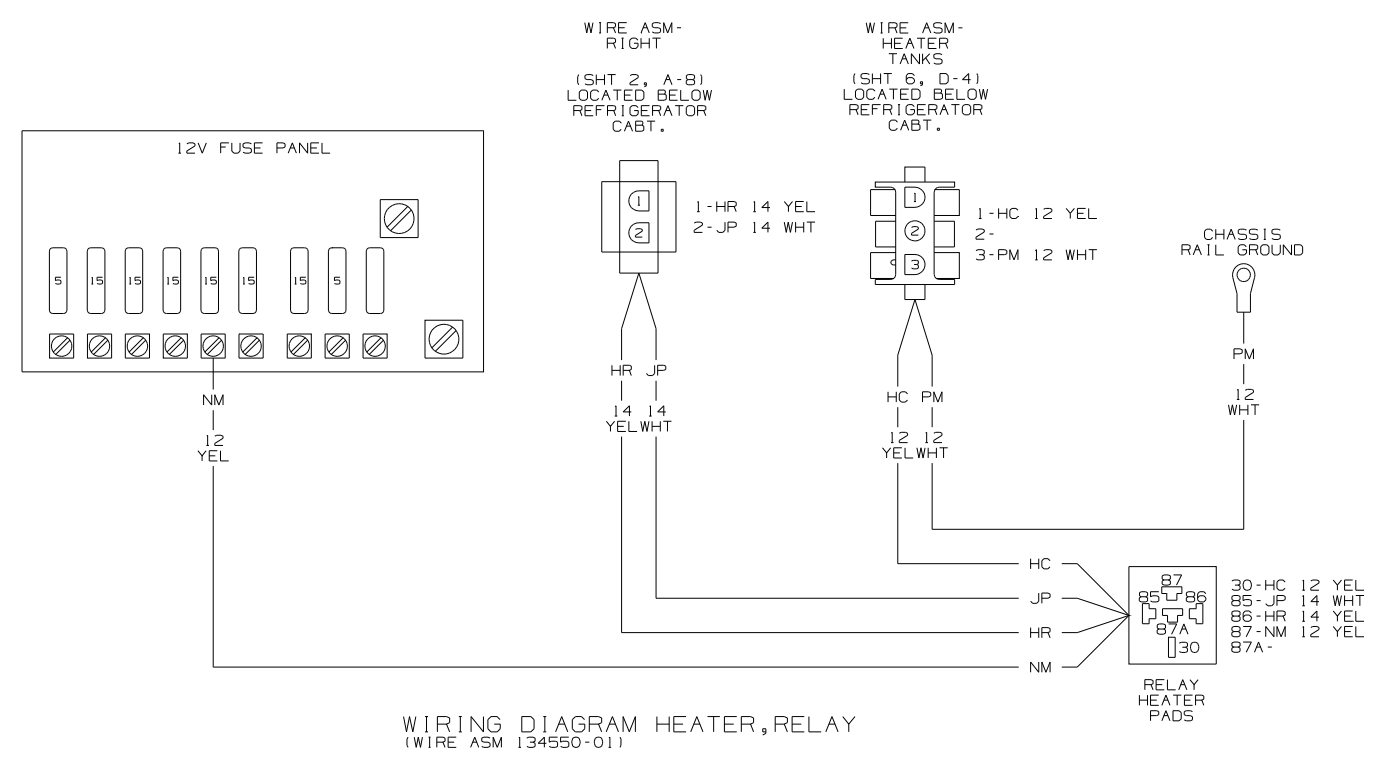
SHEET 4 PART NO 142308

1 03/03/03



NOTES:
 1 STANDARDIZED LOOM, CIRCUIT CALLOUTS MAY BE DIFFERENT FOR OTHER UNITS.

FIRST USED	03 329B
TITLE	DO NOT SCALE DRAWING
TITLE	WIRING DIAGRAM-BODY,12V
SHEET 5	PART NO 142308



FIRST USED	03 329B
TITLE	DO NOT SCALE DRAWING
SHEET 6	WIRING DIAGRAM-BODY, 12V
PART NO	142308
1 03/03/03	