

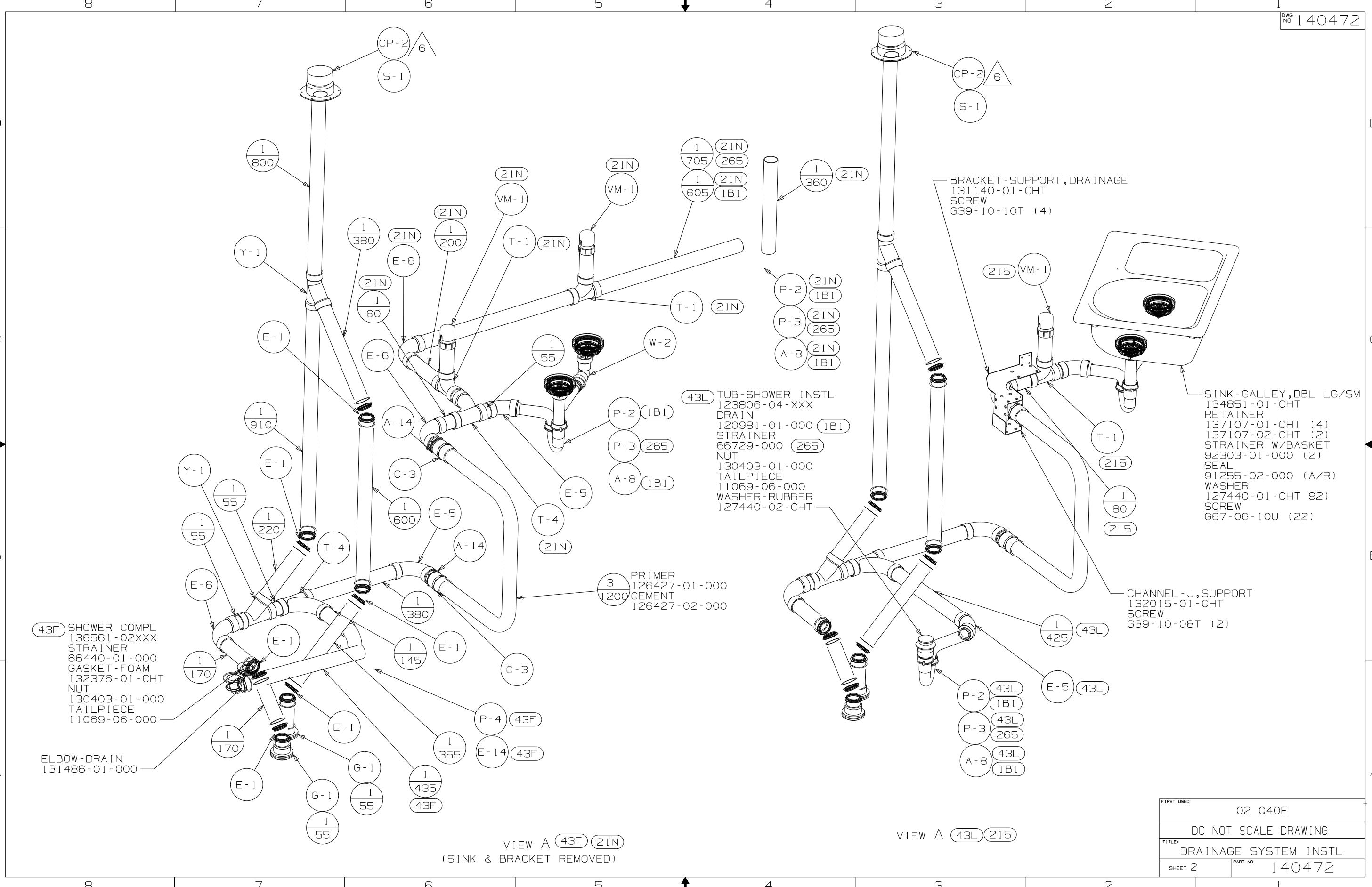
FRONT OF VEHICLE

- (43L) SHOWER/TUB W/WALL SURROUND
- (43F) SHOWER SURROUND
- (1B1) CODES/STANDARDS USA
- (265) CODES/STANDARDS-CSA/CMVSS
- (54E) WASHER/DRYER
- (21T) WASHER/DRYER WITHOUT
- (21N) DISHWASHER/BUILT-IN
- (215) DISHWASHER WITHOUT

- NOTES:
1. SLOPE OF HORIZONTAL PIPING TO BE 6 PER 305 MM.
 2. SLOPE OF TRAP ARM MUST BE 6 PER 305 MM.
 3. ALL PIPE AND FITTINGS TO BE ASSEMBLED WITH SOLVENT 4020-01-000.
 4. ALL EXTERIOR OPENINGS AROUND PIPE TO BE SEALED WITH 110744-01-000.
 5. SEAL AROUND SHOWER WITH SILICONE.
 6. VENT PIPE MUST PROJECT 51 MIN AND 63.5 MAX ABOVE ROOF FOR PROPER FIT AND FUNCTION.

| | | | |
|---------------------------------|------------|---|-----|
| WINNEBAGO | | COPYRIGHT 2002 WINNEBAGO INDUSTRIES, INC. | |
| DFTR | ORIG. DATE | ALL DIMENSIONS ARE IN MILLIMETERS | |
| CHKR | | FIRST USED | |
| P.E. | | 02 040E | |
| M.E. | | UNSPECIFIED TOLERANCES ARE: | |
| DSNR | | MATERIAL: | |
| | | WHOLE DIM (X) | : 7 |
| | | ONE-PLACE (X.X) | : |
| | | TWO-PLACE (X.XX) | : |
| | | ANGLE | : |
| | | THIRD ANGLE PROJECTION | |
| DO NOT SCALE DRAWING | | | |
| TITLE: DRAINAGE SYSTEM INSTL | | | |
| SHEET 1 OF 4 | PART NO | 140472 | |
| REF: | 1 | | |

(X-X)
FOR
DRAINAGE
CALLOUTS
SEE DWG NO
116229-01-000



- 43F SHOWER COMPL 136561-02XXX
- STRAINER 66440-01-000
- GASKET-FOAM 132376-01-CHT
- NUT 130403-01-000
- TAILPIECE 11069-06-000

ELBOW-DRAIN 131486-01-000

- 43L TUB-SHOWER INSTL 123806-04-XXX
- DRAIN 120981-01-000 (1B1)
- STRAINER 66729-000 (265)
- NUT 130403-01-000
- TAILPIECE 11069-06-000
- WASHER-RUBBER 127440-02-CHT

- 3 PRIMER 126427-01-000
- 1200 CEMENT 126427-02-000

BRACKET-SUPPORT, DRAINAGE 131140-01-CHT
SCREW 639-10-10T (4)

- SINK-GALLEY, DBL LG/SM 134851-01-CHT
- RETAINER 137107-01-CHT (4)
- 137107-02-CHT (2)
- STRAINER W/BASKET 92303-01-000 (2)
- SEAL 91255-02-000 (A/R)
- WASHER 127440-01-CHT 92)
- SCREW 667-06-10U (22)

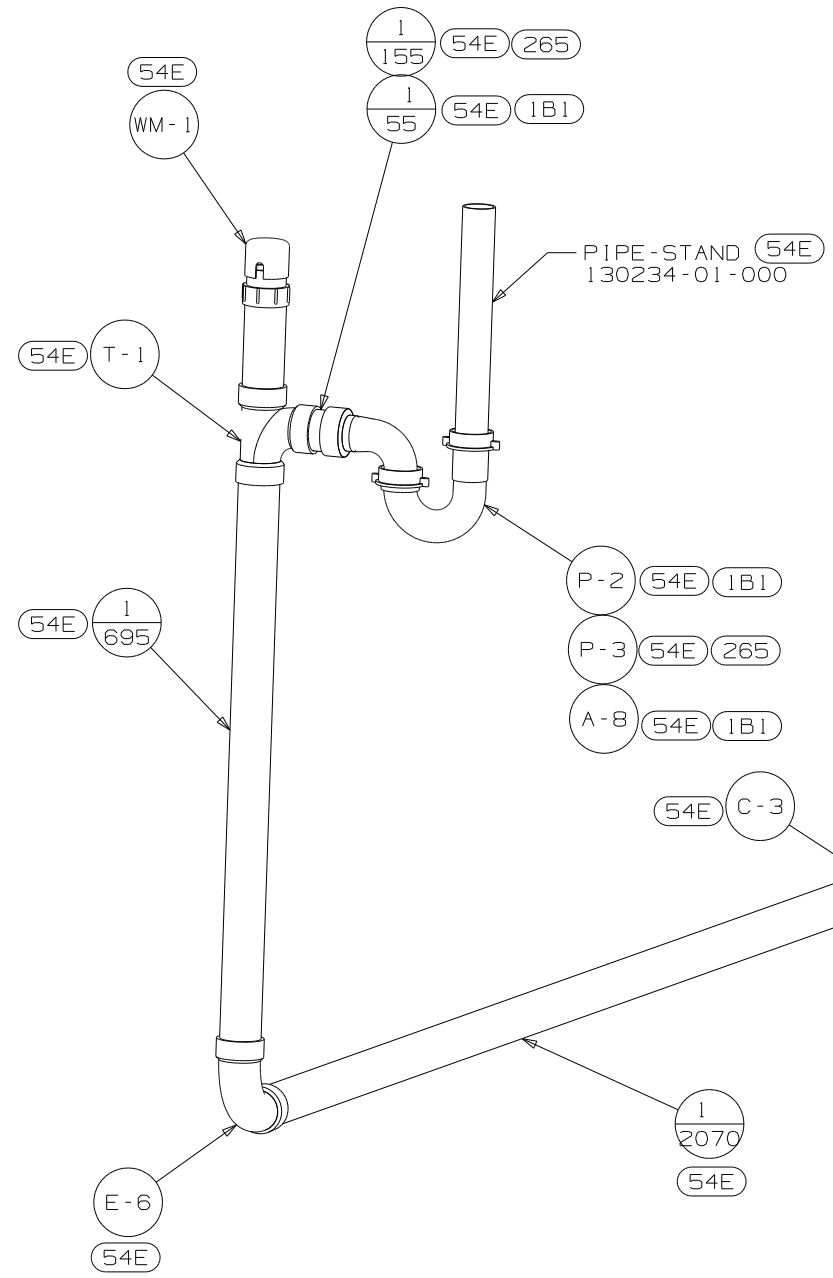
CHANNEL - J, SUPPORT 132015-01-CHT
SCREW 639-10-08T (2)

VIEW A (43F) (21N)
(SINK & BRACKET REMOVED)

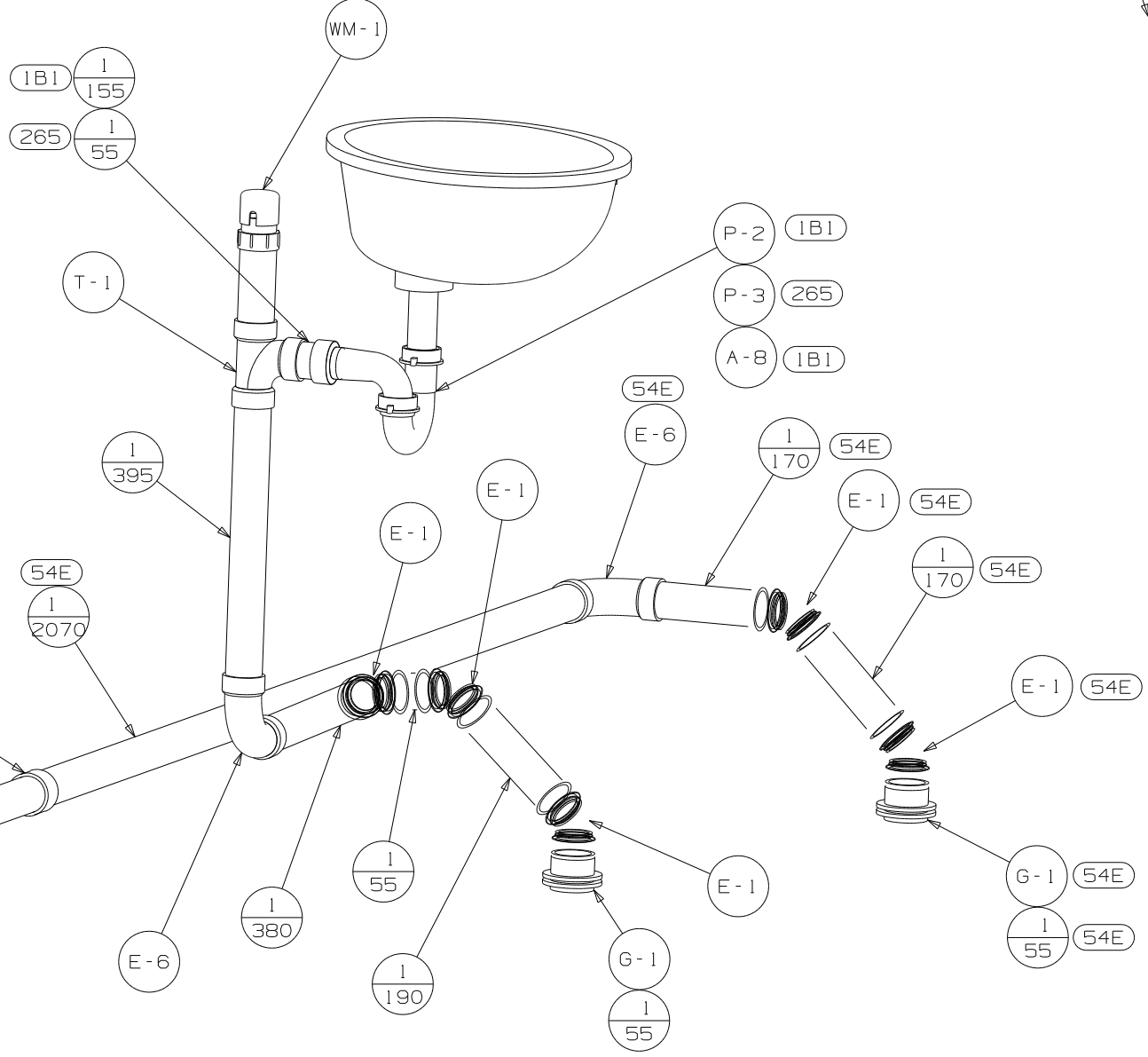
VIEW A (43L) (215)

| | |
|----------------------|-----------------------|
| FIRST USED | 02 Q40E |
| DO NOT SCALE DRAWING | |
| TITLE | DRAINAGE SYSTEM INSTL |
| SHEET 2 | PART NO 140472 |

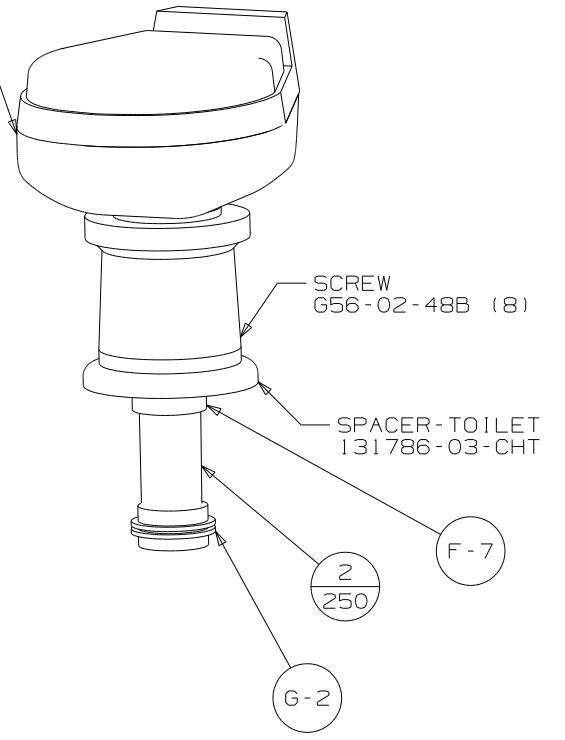
TOILET-CHINA
136729-01-CHT



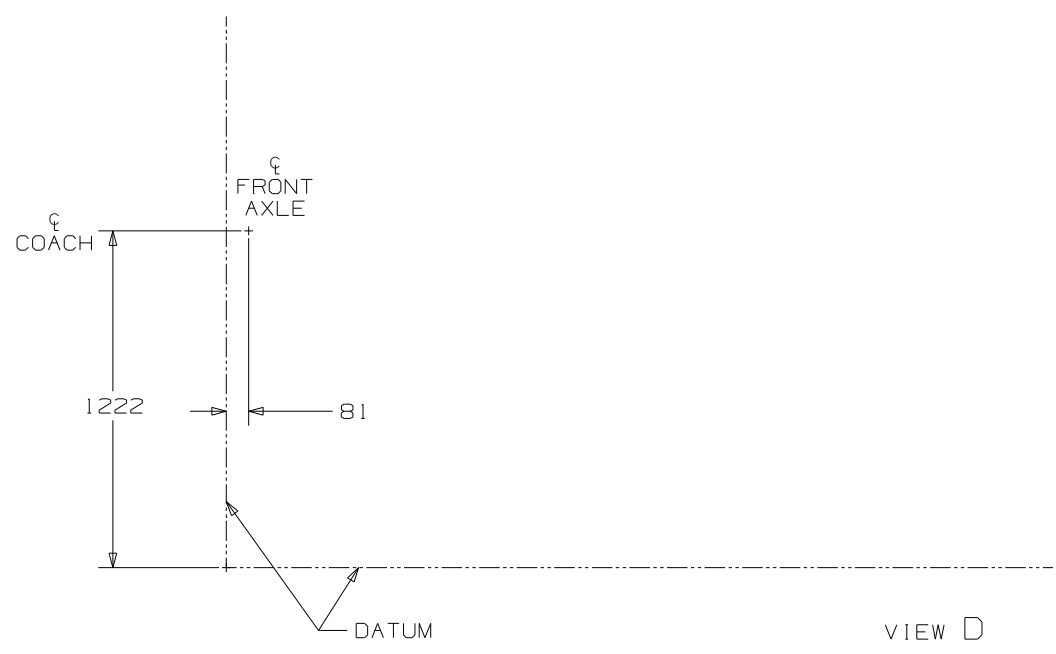
VIEW B



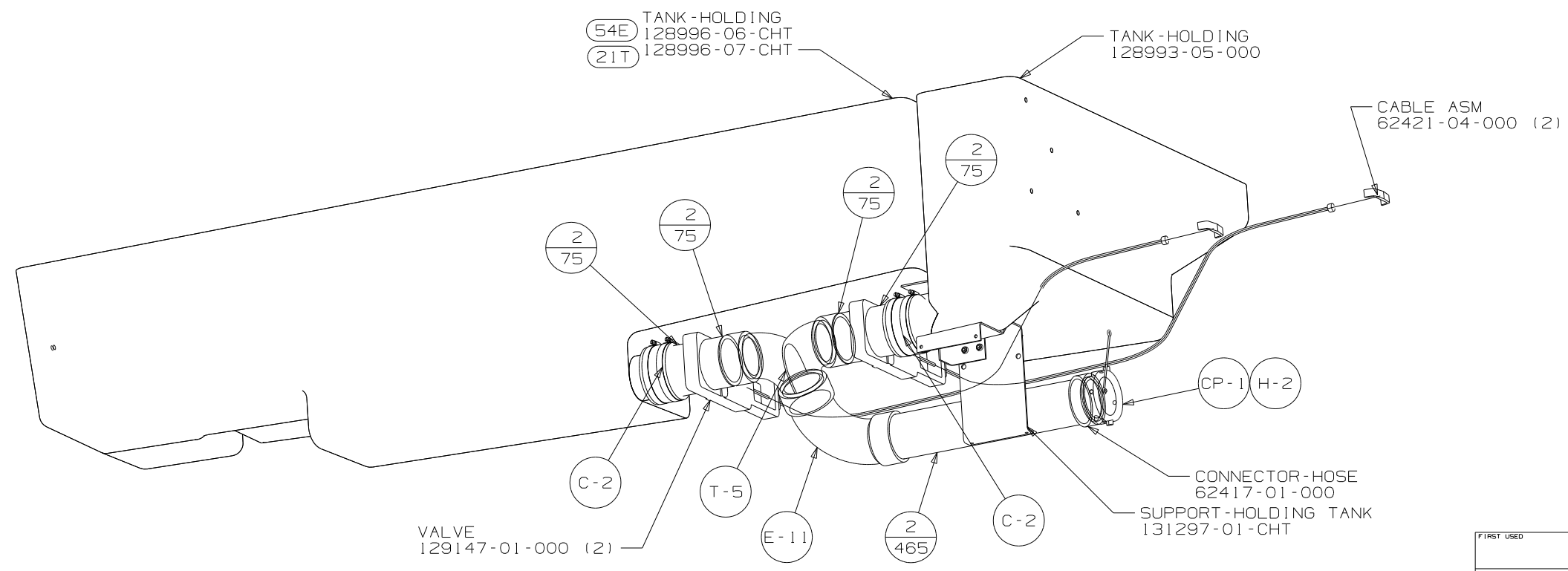
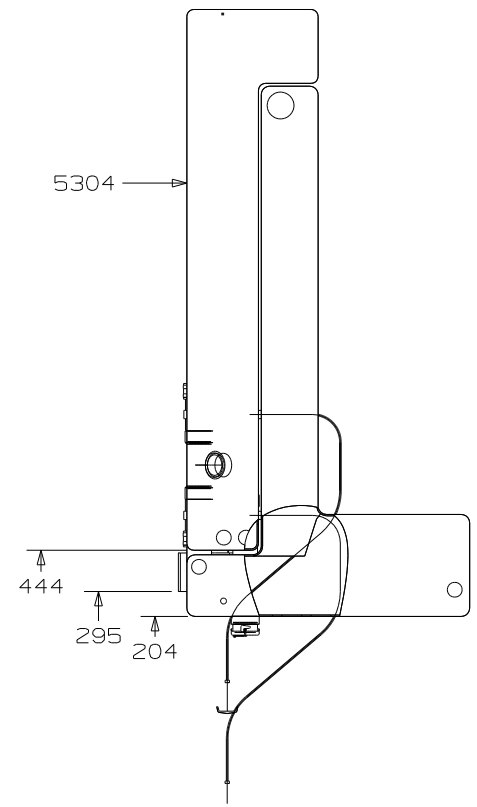
VIEW C



| | |
|------------|----------------------|
| FIRST USED | 02 Q40E |
| TITLE | DO NOT SCALE DRAWING |
| SHEET 3 | PART NO 140472 |



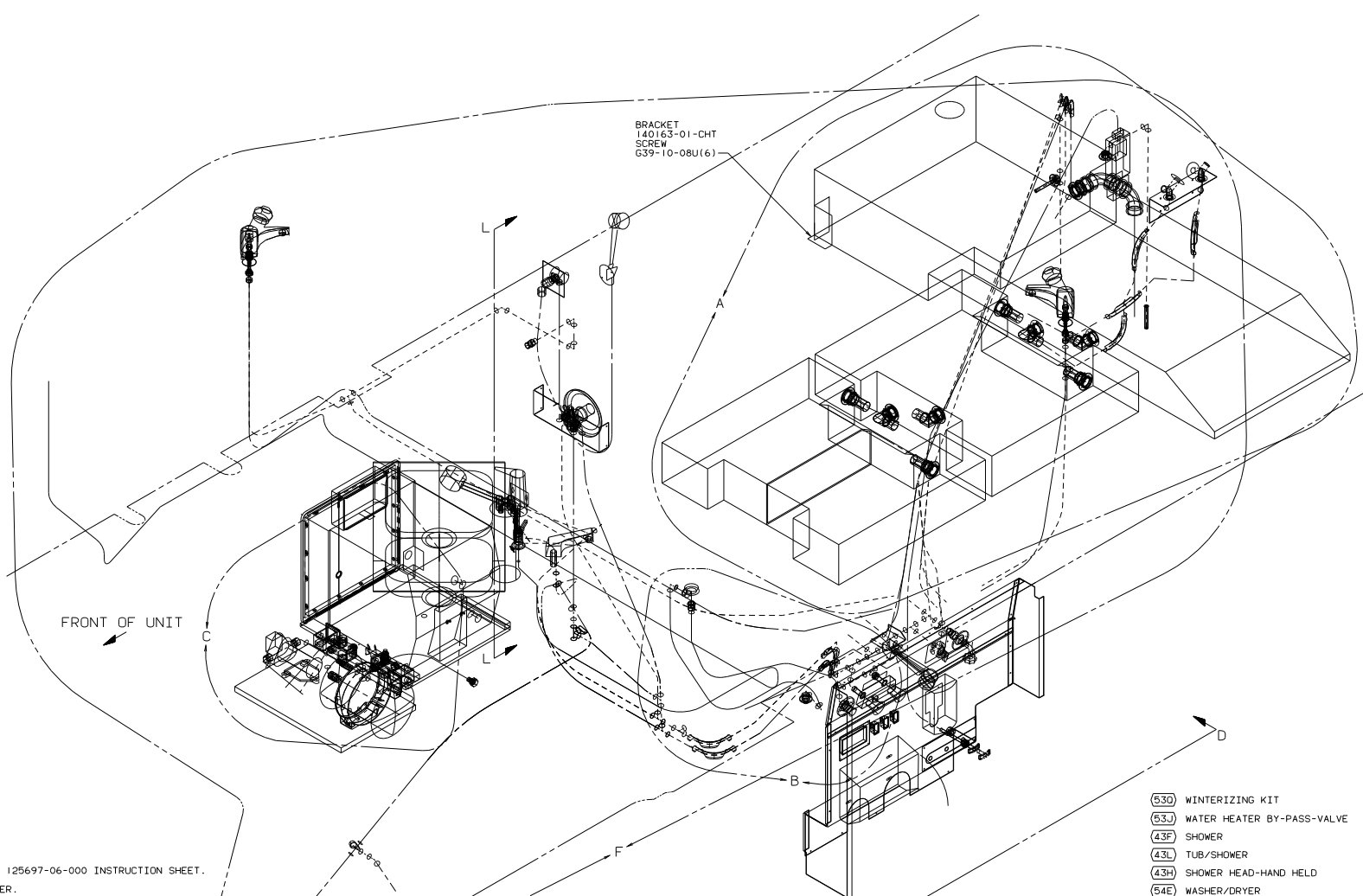
VIEW D



VIEW E

| | |
|----------------------|-----------------------|
| FIRST USED | 02 Q40E |
| DO NOT SCALE DRAWING | |
| TITLE | DRAINAGE SYSTEM INSTL |
| SHEET 4 | PART NO 140472 |

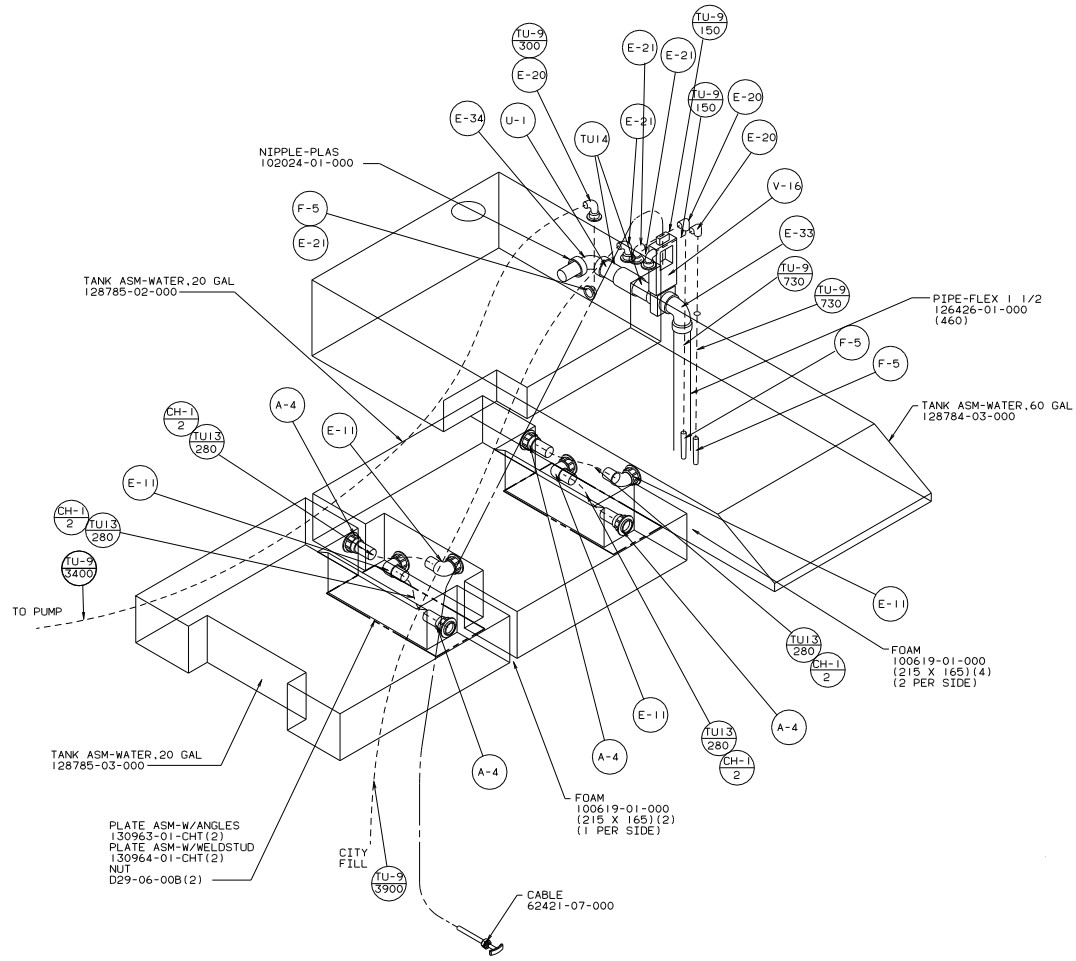
| DWG NO | MODEL |
|-----------|-------|
| 137721-01 | Q40J |
| 137721-02 | Q40JD |
| 137721-03 | Q40WD |
| 137721-04 | Q40E |



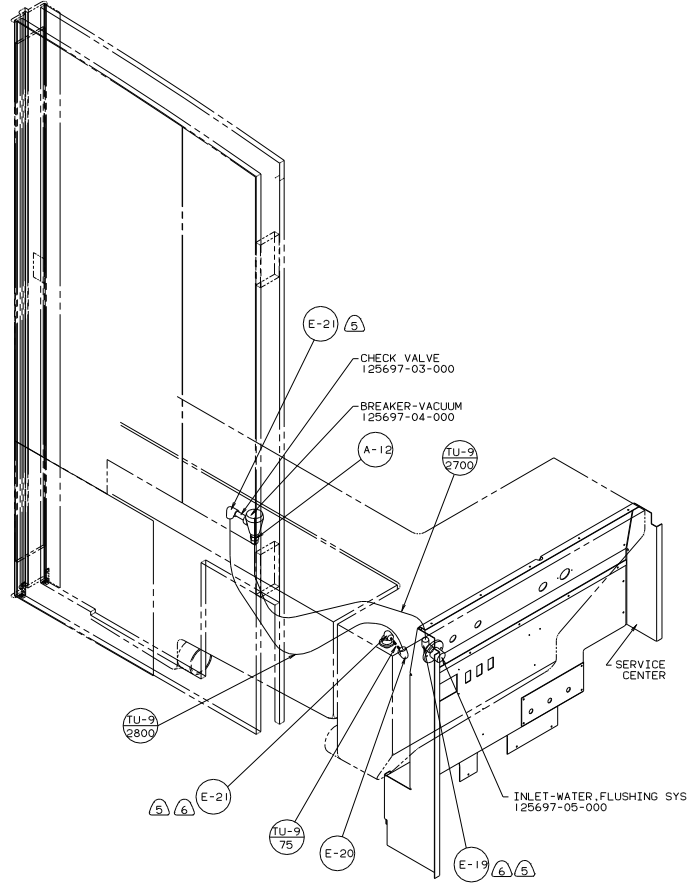
- 9 FLUSHING SYSTEM REQUIRES 125697-06-000 INSTRUCTION SHEET.
- 9 LOCATE BEHIND WASHER/DRYER.
- 9 USE DETAIL "G" IN THIS AREA (BOTH ENDS OF TUBING).
- 9 INSTALL WITH TANK.
- 9 WRAP WITH TEFLON TAPE 10405-02-000 TO FITTINGS.
- 9 PRE-DRILL SHOWER SURROUND WITH 5.0 DIA HOLES USING MOUNTING BRACKET AS A TEMPLATE.
3. ALL TUBING TO BE SECURED AT 1200 INTERVALS MAXIMUM WITH CLAMP 10495-01-000 OR CLIP 91951-01-000 AND SCREW G67-10-12B.
2. TUBING TO BE INSTALLED WITH SUFFICIENT SLOPE TO PROVIDE DRAINAGE TO NEAREST VALVE.
1. PLASTIC FITTINGS TO BE SEALED WITH SEALANT 84456-01-000.

- | | |
|-------|----------------------------|
| (530) | WINTERIZING KIT |
| (53J) | WATER HEATER BY-PASS-VALVE |
| (43F) | SHOWER |
| (43L) | TUB/SHOWER |
| (43H) | SHOWER HEAD-HAND HELD |
| (54E) | WASHER/DRYER |
| (21S) | DISHWASHER WITHOUT |
| (21T) | WASHER/DRYER-WITHOUT |
| (21N) | DISHWASHER/BUILT-IN |

| | | | | | | | |
|-----------------------------------|-------|--|-----------------------------|----------------------------|--|------------|--|
| LEGEND | | CORWEIGHT 2002 | | WINNERADO INDUSTRIES, INC. | | 02 Q40J/JD | |
| HOT | ---- | DATE | UNSPECIFIED TOLERANCES ARE: | | | | |
| COLD | ----- | DATE | FRAMES ARE: | | | | |
| | | DATE | ONE-PLACE (X.X) | | | | |
| | | DATE | TWO-PLACE (X.XX) | | | | |
| | | DATE | MILS | | | | |
| | | DATE | THRU-HOLE PRODUCTION | | | | |
| | | DATE | | | | | |
| X-X | | FOR WATER CALLOUTS SEE DWG NO. 116230-01-000 | | | | | |
| DRAWN BY | | SCALE | | SHEET | | OF | |
| 040JD | | 1:1 | | 16 | | 9 | |
| TITLE | | DATE | | REV | | NO | |
| WATER SYSTEM INSTL | | 1/6 | | 1 | | 137721 | |
| ALL DIMENSIONS ARE IN MILLIMETERS | | | | | | | |



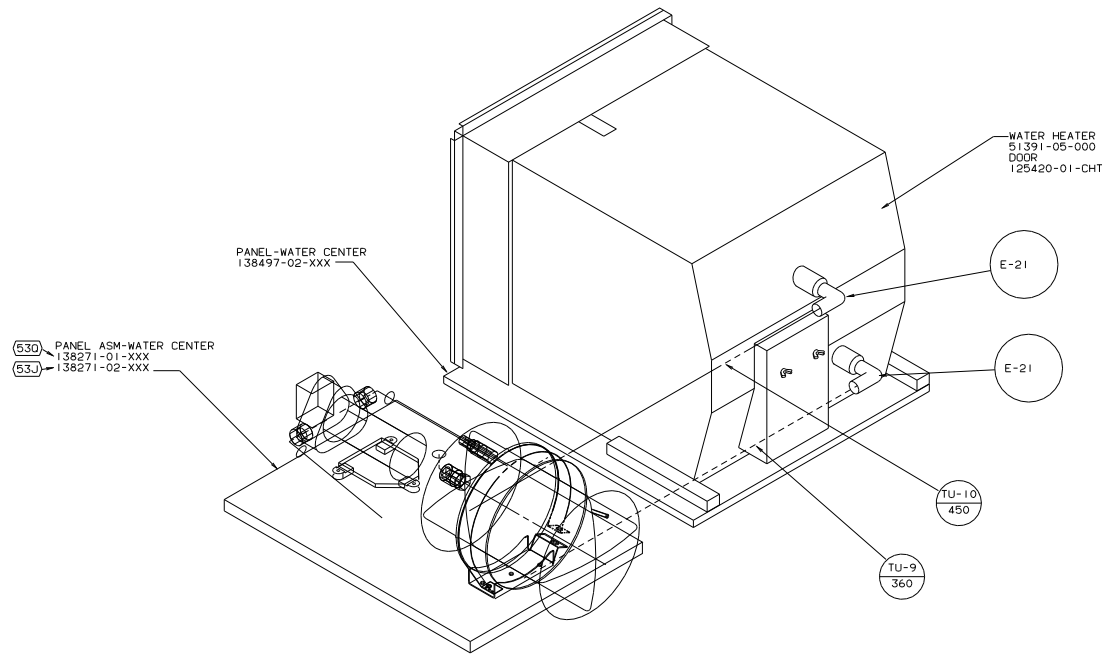
DETAIL A



DETAIL B
FLUSHING SYSTEM

02 Q40J, JD. WD. E

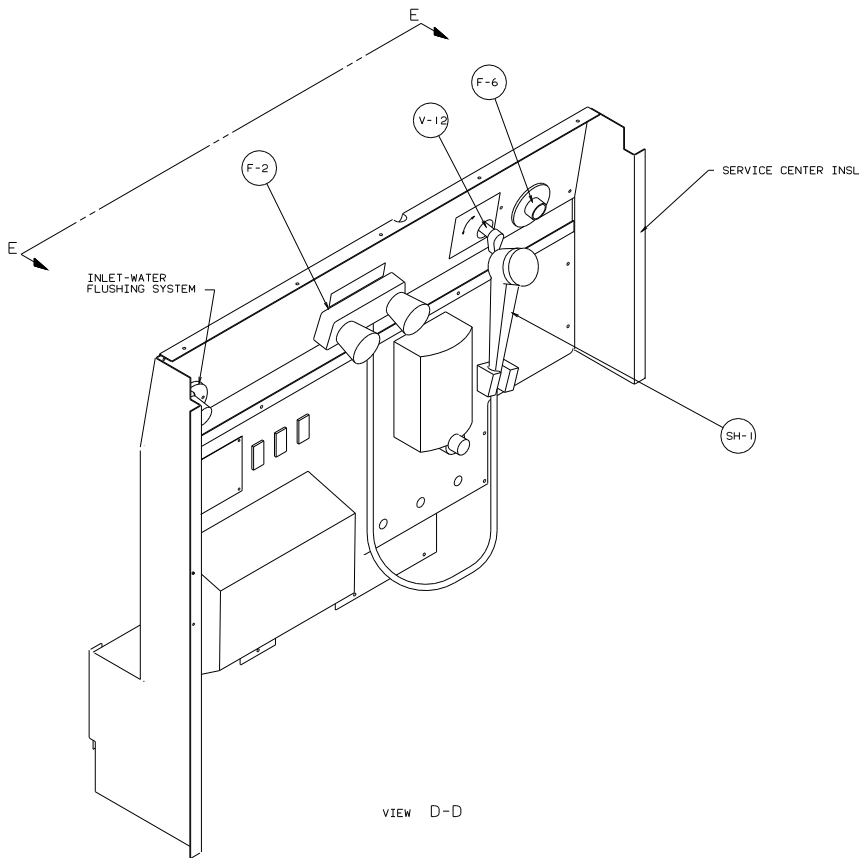
| | | | |
|----------------------|------|--------------------|--------|
| TITLE | | WATER SYSTEM INSTL | |
| 30 NET SCALE DRAWING | SIZE | DATE | 137721 |
| SHEET 2 | OF 9 | 1 E | |



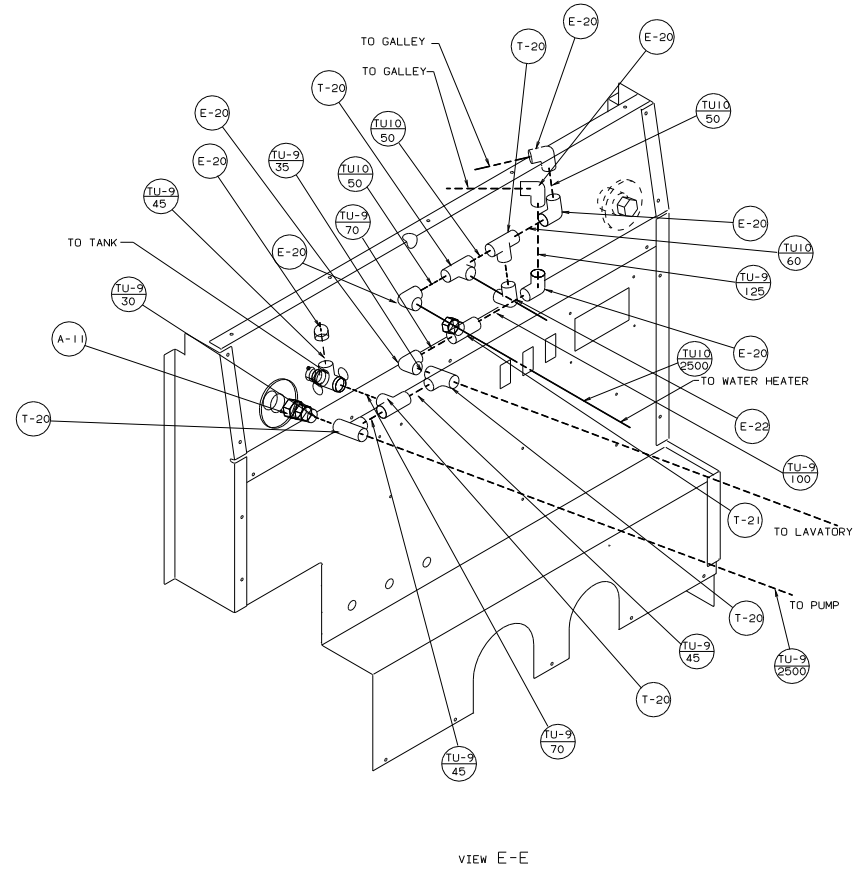
DETAIL C

02 Q40J, 4D, WD, E

| | |
|---------------------------|---------------|
| TITLE: WATER SYSTEM INSTL | |
| 30 MET SCALE DRAWING | SIZE 1/8" |
| SHEET 3 of 9 | DWG NO 137721 |



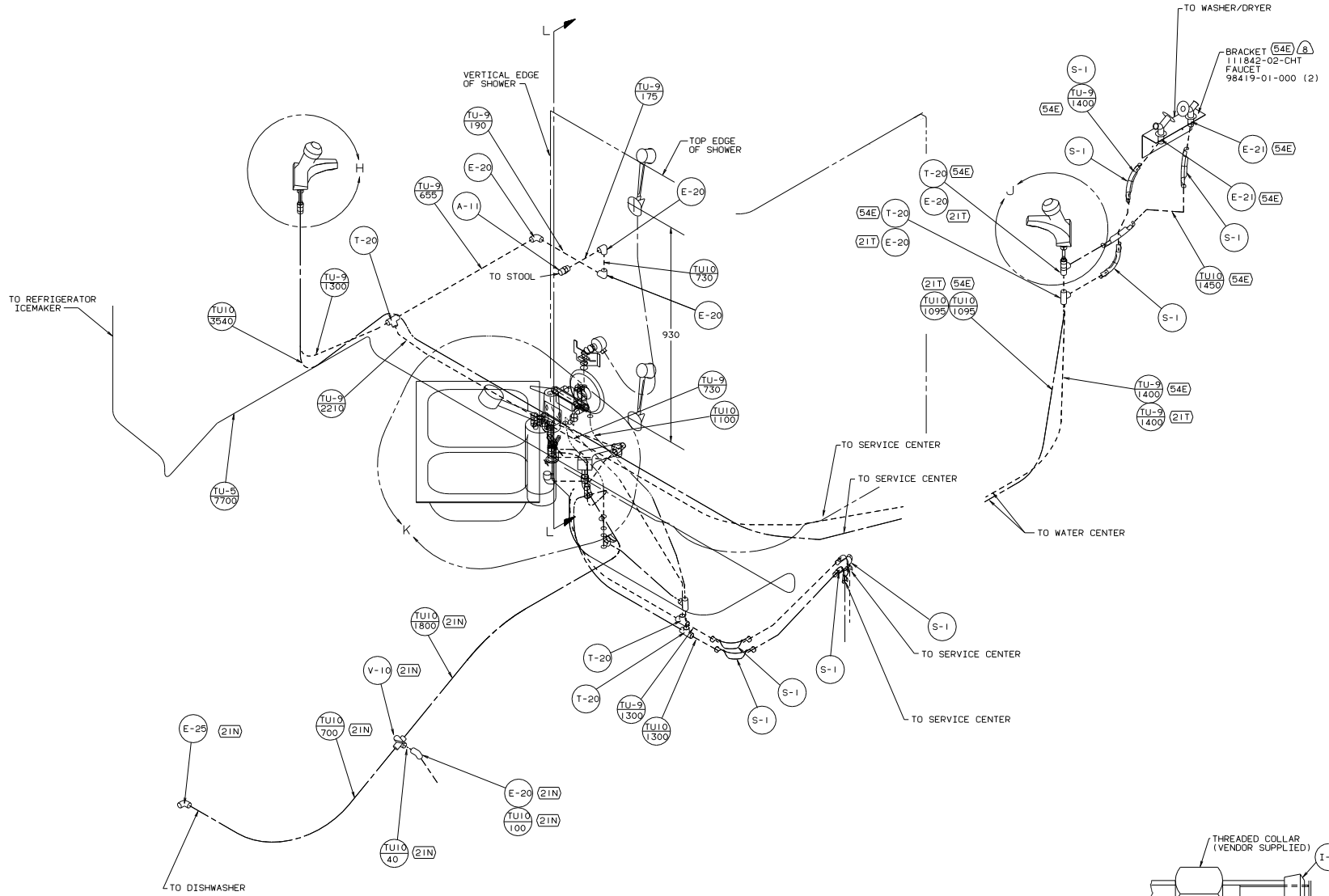
VIEW D-D



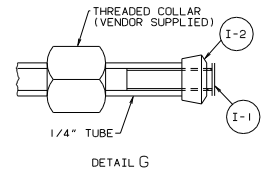
VIEW E-E

02 040J, JD, WD, E

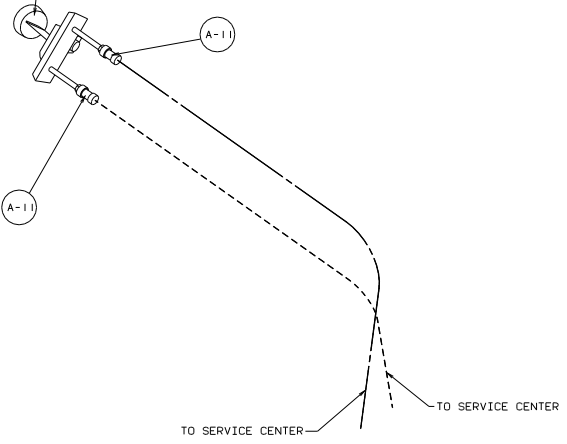
| | |
|---------------------------|--------------------|
| TITLE: WATER SYSTEM INSTL | |
| 30 MILL SCALE DRAWING | SIZE: 1/2" = 1'-0" |
| SHEET 4 OF 9 | DATE: 137721 |



DETAIL F

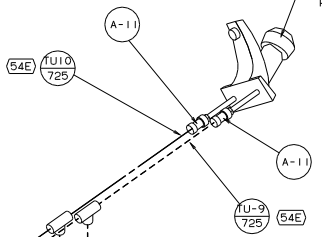


FAUCET
128997-01-CHT (40J)
FAUCET
134735-01-CHT (40JD,40WD)
POP UP FAUCET
110760-04-000 (JD,WD)



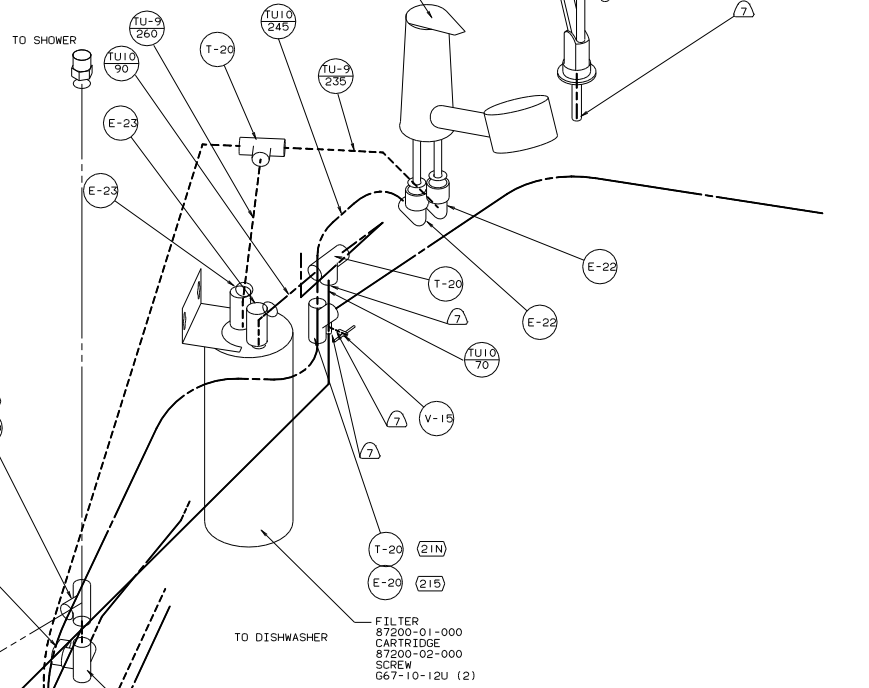
DETAIL H

FAUCET
128997-01-CHT (40J,40E)
FAUCET
134735-01-CHT (40JD,40WD)
POP UP FAUCET
110760-04-000 (JD,WD)



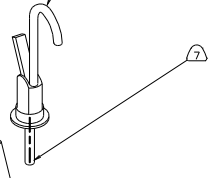
DETAIL J

FAUCET
123744-03-CHT (40J,40E)
123744-01-CHT (40JD,40WD)
BACKING-FAUCET
139295-01-CHT



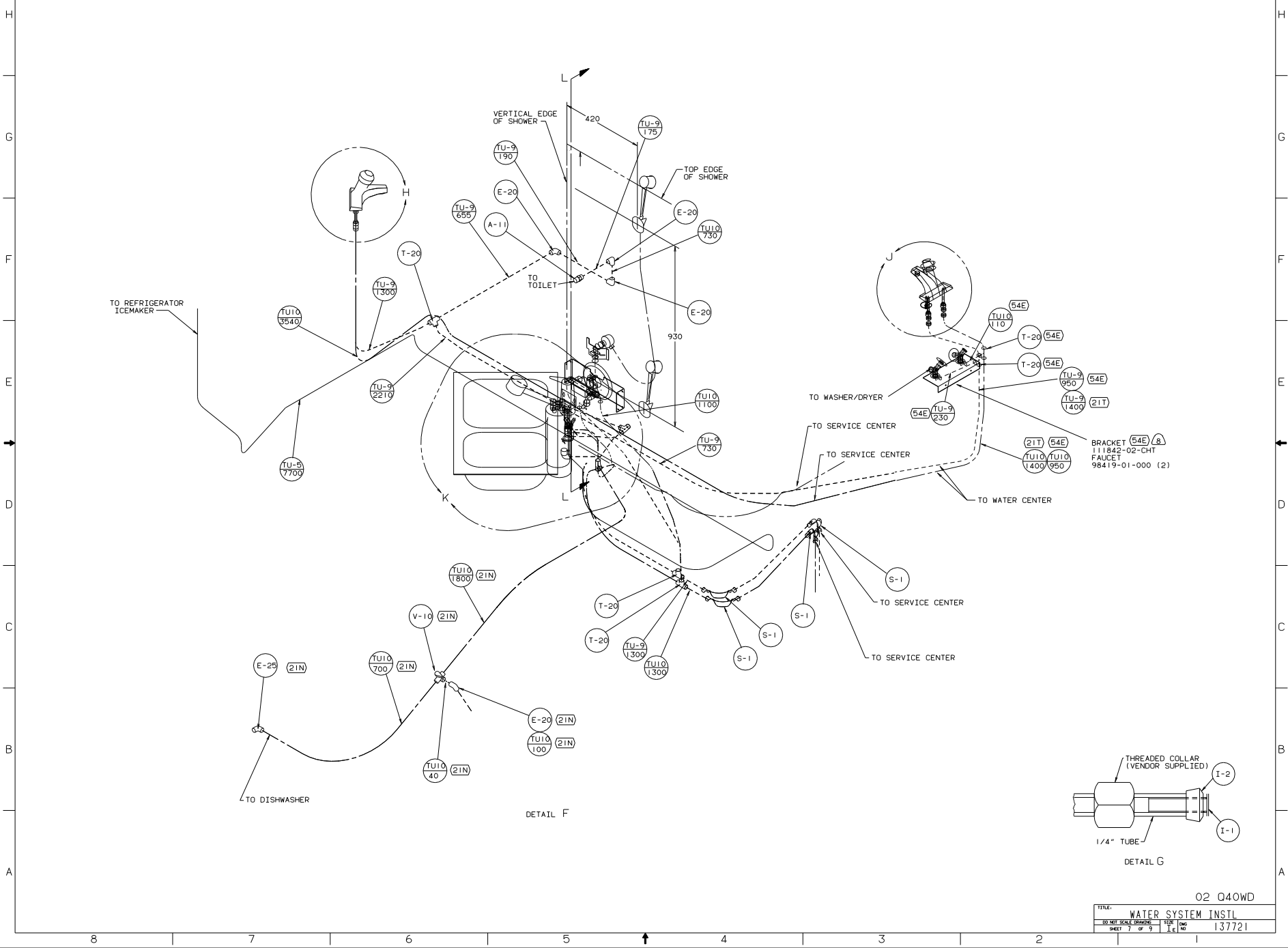
DETAIL K

FAUCET
103635-01-000 (40J,40E)
103635-03-000 (40JD,40WD)

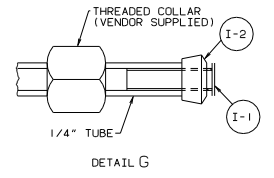


02 Q40J, JD, WD, E

| | | | |
|---------------------------|-------|------|--------|
| TITLE: WATER SYSTEM INSTL | | DATE | DWG NO |
| 30 NET SCALE DRAWING | SHEET | 6 | 8 |
| | 1/E | | 137721 |



DETAIL F



DETAIL G

02 Q40WD

| TITLE: WATER SYSTEM INSTL | | | |
|---------------------------|------|--------|--------|
| 30 MET SCALE DRAWING | SIZE | DWG NO | 137721 |
| SHEET | 7 | OF | 9 |

8

7

6

5

4

3

2

1

H

G

F

E

D

C

B

A

H

G

F

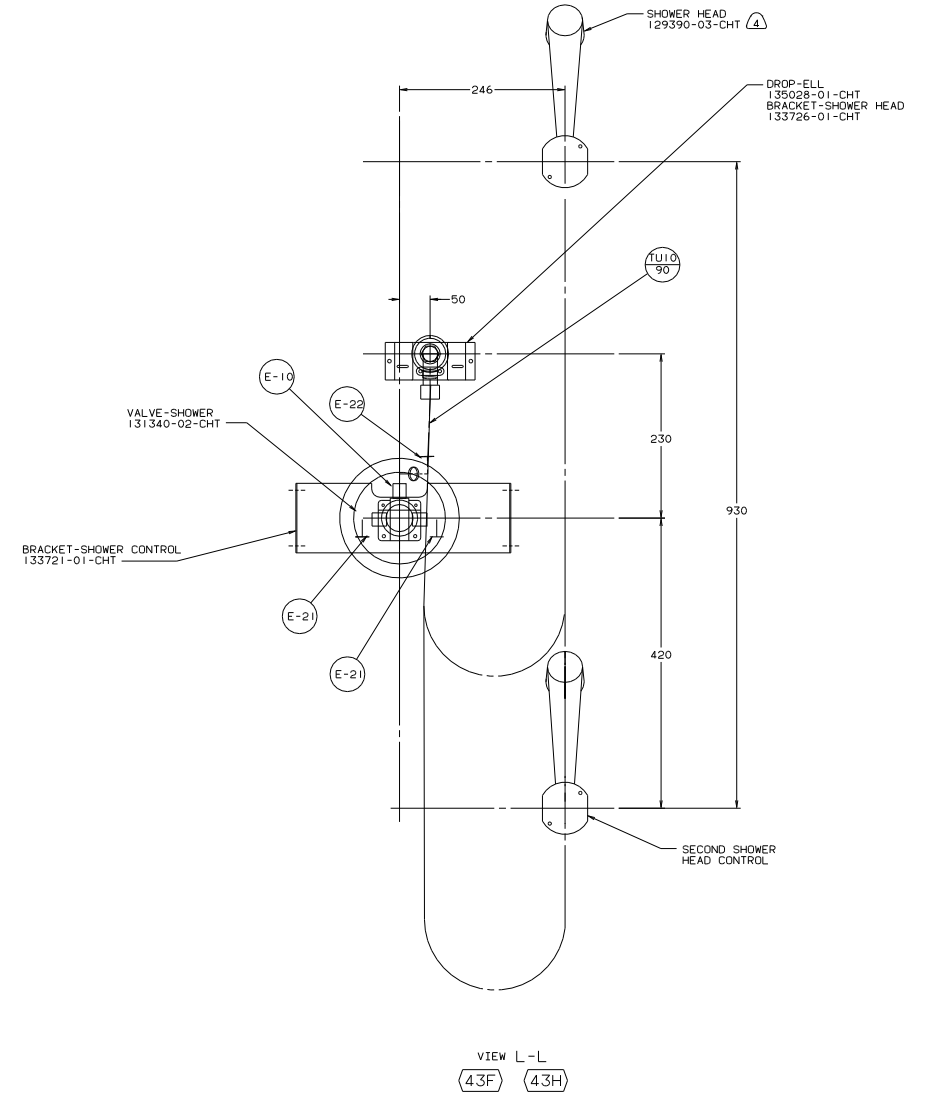
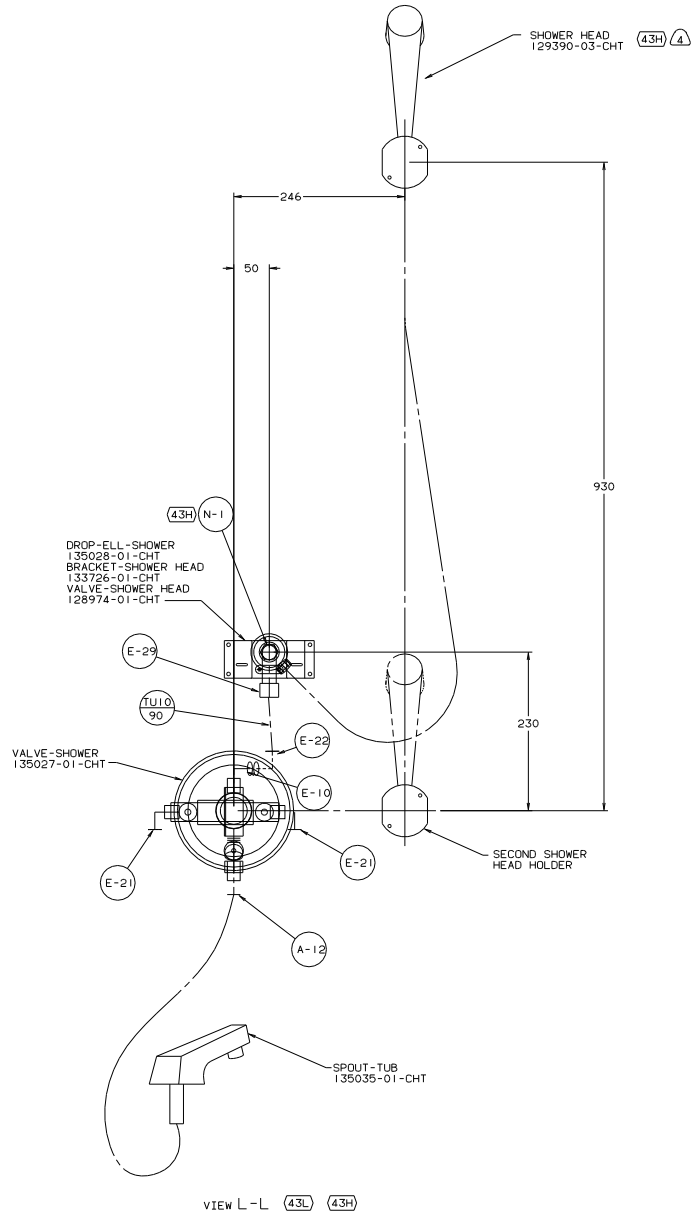
E

D

C

B

A



02 Q40J/JD/WD/E

| | | | |
|----------------------|------|--------------------|---|
| TITLE | | WATER SYSTEM INSTL | |
| 30 MET SCALE DRAWING | DATE | 1 | 1 |
| SHEET 8 OF 9 | REV | 1 | 1 |
| | | 137721 | |

8

7

6

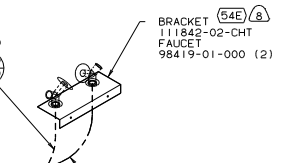
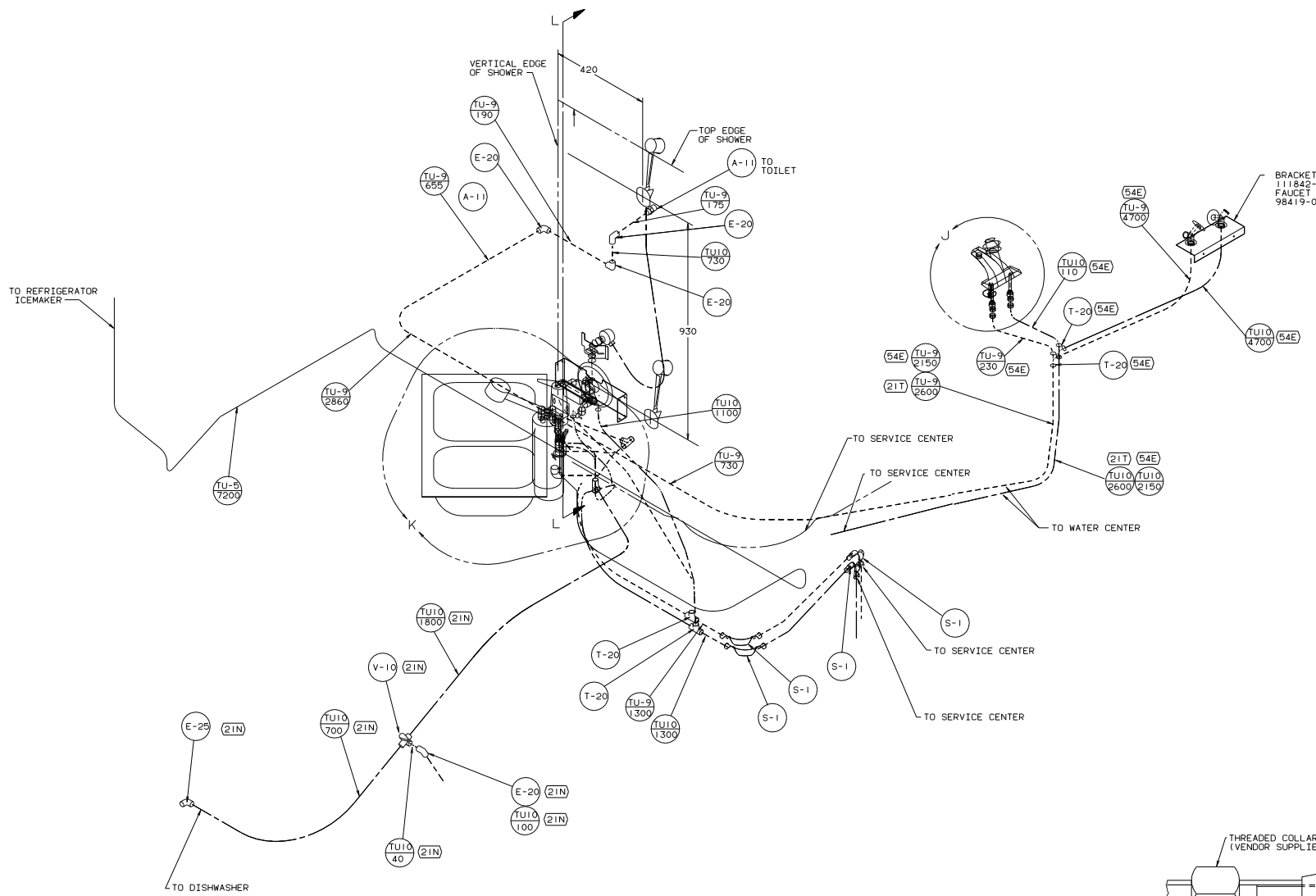
5

4

3

2

1



DETAIL G

DETAIL F

| | | | |
|---------------------------|------|---------------|--|
| TITLE: WATER SYSTEM INSTL | | | |
| 30 NET SCALE DRAWING | DATE | DWG NO 137721 | |
| SHEET 9 OF 9 | 1 E | | |

02 Q40E