

- NOTES:
1. SLOPE OF HORIZONTAL PIPING TO BE 6 PER 300 MINIMUM.
 2. SLOPE OF TRAP MUST BE 6 PER 300 MINIMUM.
 3. ALL PIPE AND FITTINGS TO BE ASSEMBLED WITH SOLVENT WELD 4020-01-000.
 4. ALL EXTERIOR OPENINGS AROUND PIPE TO BE SEALED WITH 69637-01-000.
 5. FOR CANADIAN UNITS EACH HOLDING TANK SHALL HAVE A CSA APPROVAL STAMPED NEAR THE IAPMO APPROVAL.
 6. SEAL ALL AROUND SHOWER PAN WITH SILICONE 78474-01-CHT.
 7. SEE DWG 61607-01-000 FOR INSTL OF GROMMET.
 8. VENT PIPE MUST PROJECT 51 MIN TO 64 MAX ABOVE ROOF FOR PROPER FIT AND FUNCTION.
 9. NOT USED ON CANADIAN UNITS.
 10. SECURE PIPES TO CABINET USING WIRE TIE 108046-02-000 AND SCREW G67-10-12U (8).
 11. SECURE DRAIN TUBES TO FLOOR.
 12. INCLUDED WITH GALLEY STRAINER.

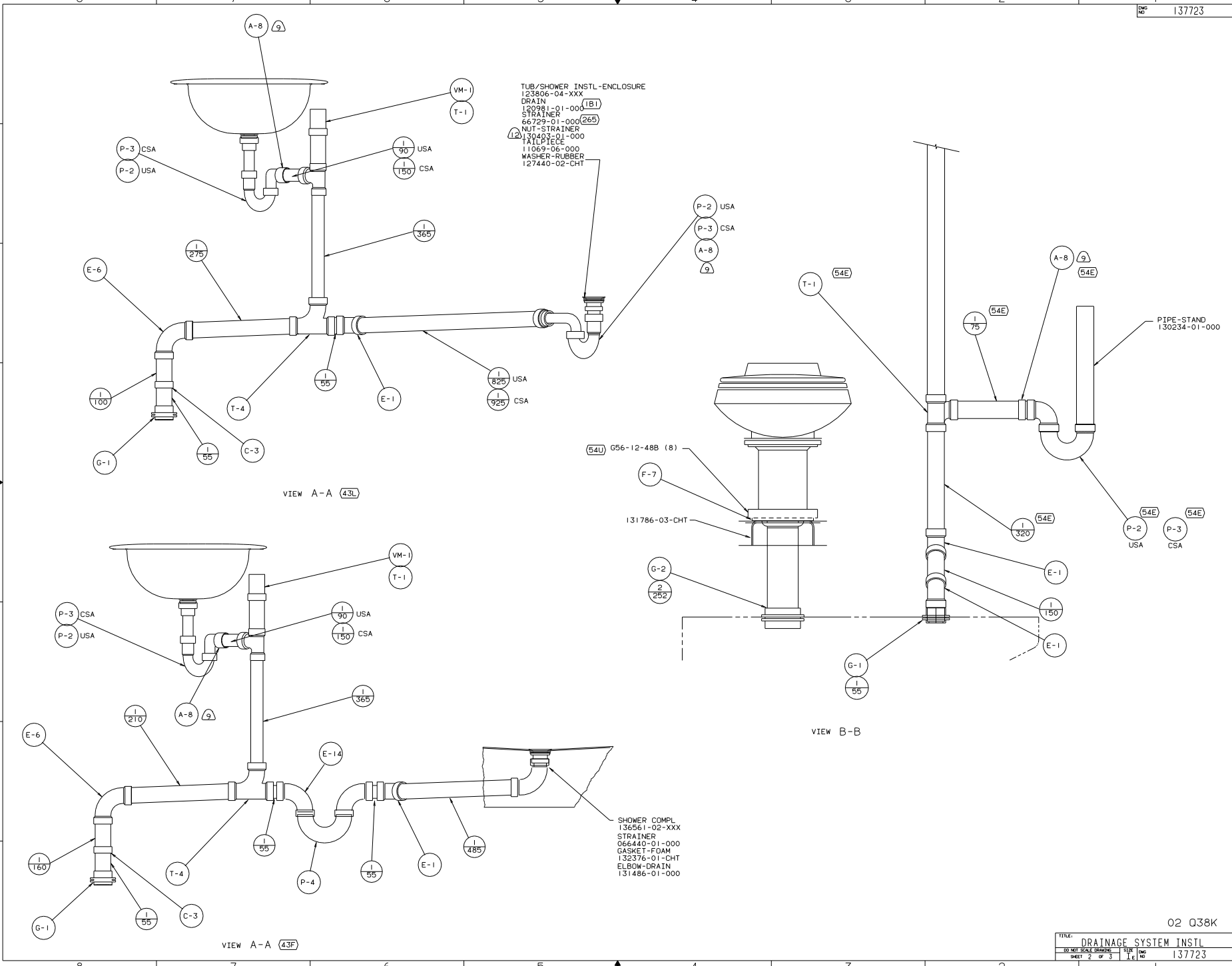
- (265) CODES/STANDARDS-CSA/CMVSS
- (181) CODES/STANDARDS USA
- (43L) SHOWER/TUB W/WALL SURROUND
- (43F) SHOWER SURROUND
- (43H) SHOWER HEAD-HAND HELD
- (54E) WASHER/DRYER
- (215) DISHWASHER WITHOUT
- (21N) DISHWASHER/BUILT-IN
- (54U) FLOOR/BATH-CERAMIC TILE

WINNERACO INDUSTRIES, INC. WINNERACO 02 038K

DATE	UNSPECIFIED TOLERANCES ARE:	MATERIAL
DATE	WHOLE DIM (IN)	
DATE	ONE-PLACE (IN.XI)	
DATE	TWO-PLACE (IN.XX)	
DATE	THREE-PLACE (IN.XXX)	
DATE	THREE-PLACE (IN.XXX)	
DATE	THREE-PLACE (IN.XXX)	

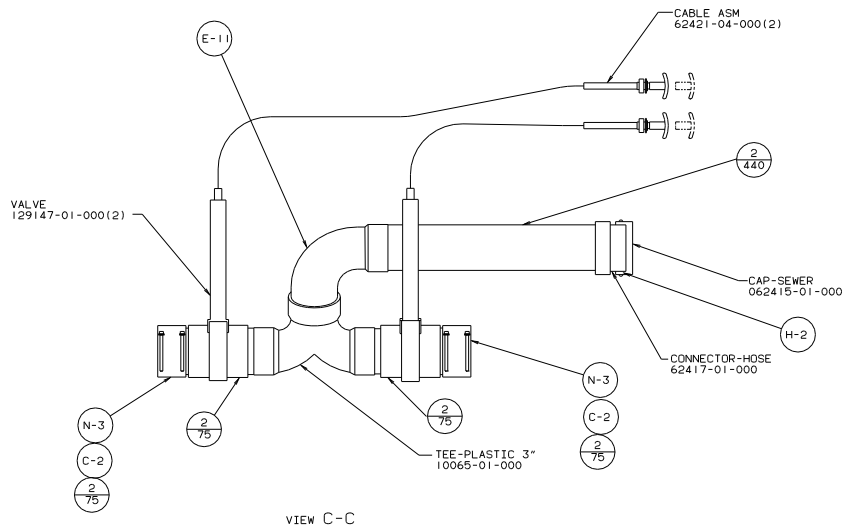
LANE# 038K TITLE: DRAINAGE SYSTEM INSTL
 SHEET 1 OF 3

FOR DRAINAGE CALL-OUTS SEE DWG NO. 116629-01-000

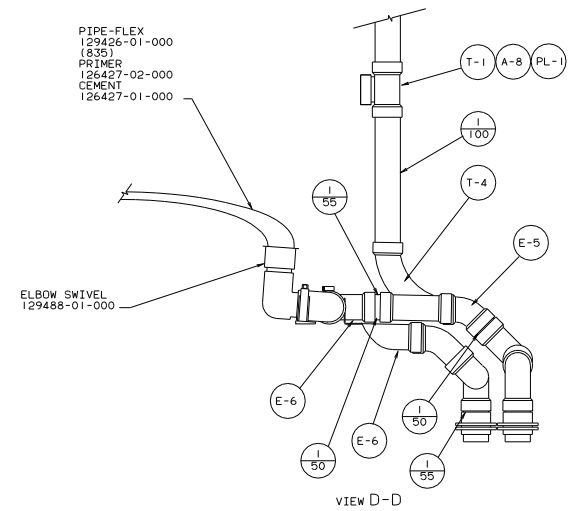


02 Q38K

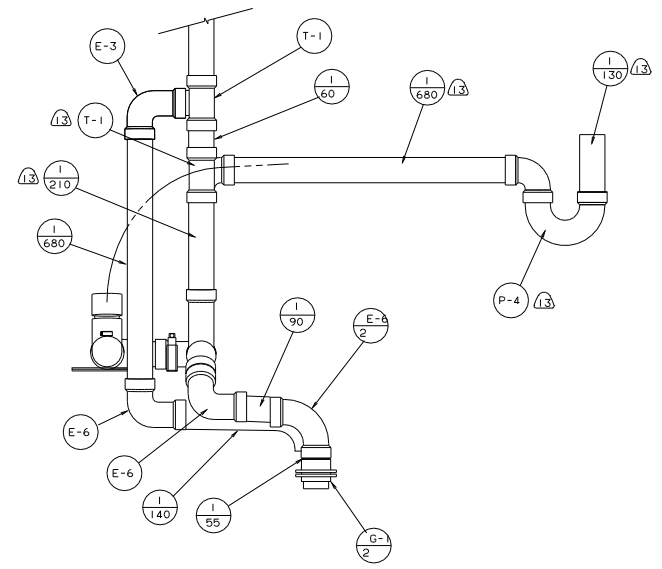
TITLE: DRAINAGE SYSTEM INSTL	
30-MIL SCALE DRAWING	FIG. NO. 1
SHEET 2 OF 3	137723



VIEW C-C



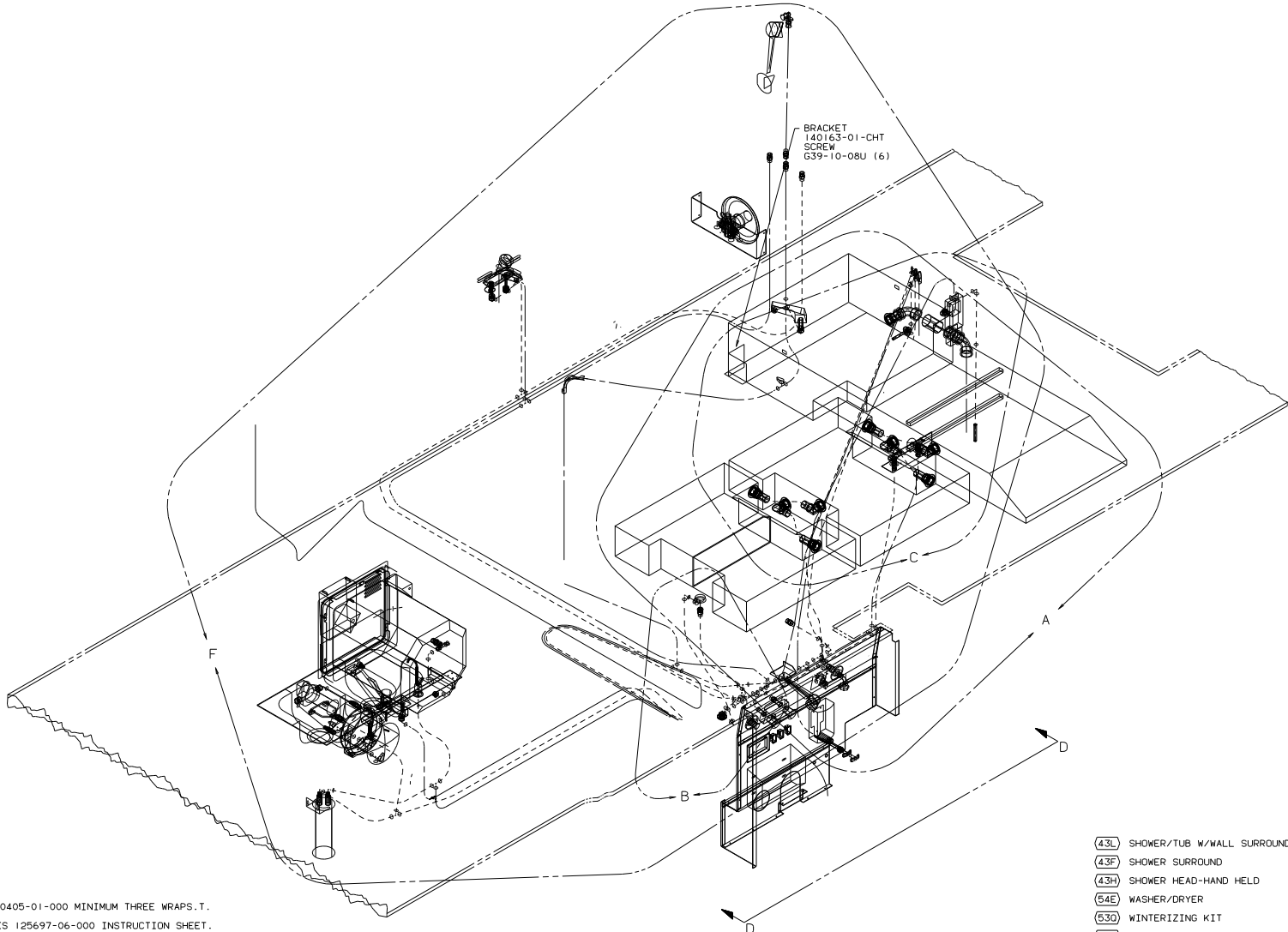
VIEW D-D



VIEW E-E

TITLE: DRAINAGE SYSTEM INSTL	
30-MIL SCALE DRAWING	FILE NO: 137723
SHEET 3 OF 3	DATE: 11/81

02 Q38K



- ① W/O (43H)
- ② WRAP WITH TEFLON TAPE 10405-01-000 MINIMUM THREE WRAPS.T.
- ③ FLUSHING SYSTEM REQUIRES 125697-06-000 INSTRUCTION SHEET.
- ④ INSTALL ON LINE.
- ⑤ INSTALL WITH TANK.
- ⑥ USE DETAIL "G" IN THIS AREA (BOTH ENDS OF TUBING).
- ⑦ ADD TEFLON TAPE 10405-02-000 TO FITTING.
- ⑧ ADD TEFLON TAPE 10405-03-000 TO FITTING.
- 3. ALL TUBING TO BE SECURED AT 1200 INTERVALS MAXIMUM WITH CLAMP 10495-01-000 OR CLIP 91951-01-000 AND SCREW G67-10-12B.
- 2. TUBING TO BE INSTALLED WITH SUFFICIENT SLOPE TO PROVIDE DRAINAGE TO NEAREST VALVE.
- 1. PLASTIC FITTINGS TO BE SEALED WITH SEALANT 84456-01-000.

- ④3L SHOWER/TUB W/WALL SURROUND
- ④3F SHOWER SURROUND
- ④3H SHOWER HEAD-HAND HELD
- ⑤4E WASHER/DRYER
- ⑤30 WINTERIZING KIT
- ⑤3J WATER HEATER BY-PASS-VALVE
- ②15 DISHWASHER WITHOUT
- ②1T WASHER/DRYER-WITHOUT
- ②1N DISHWASHER/BUILT-IN

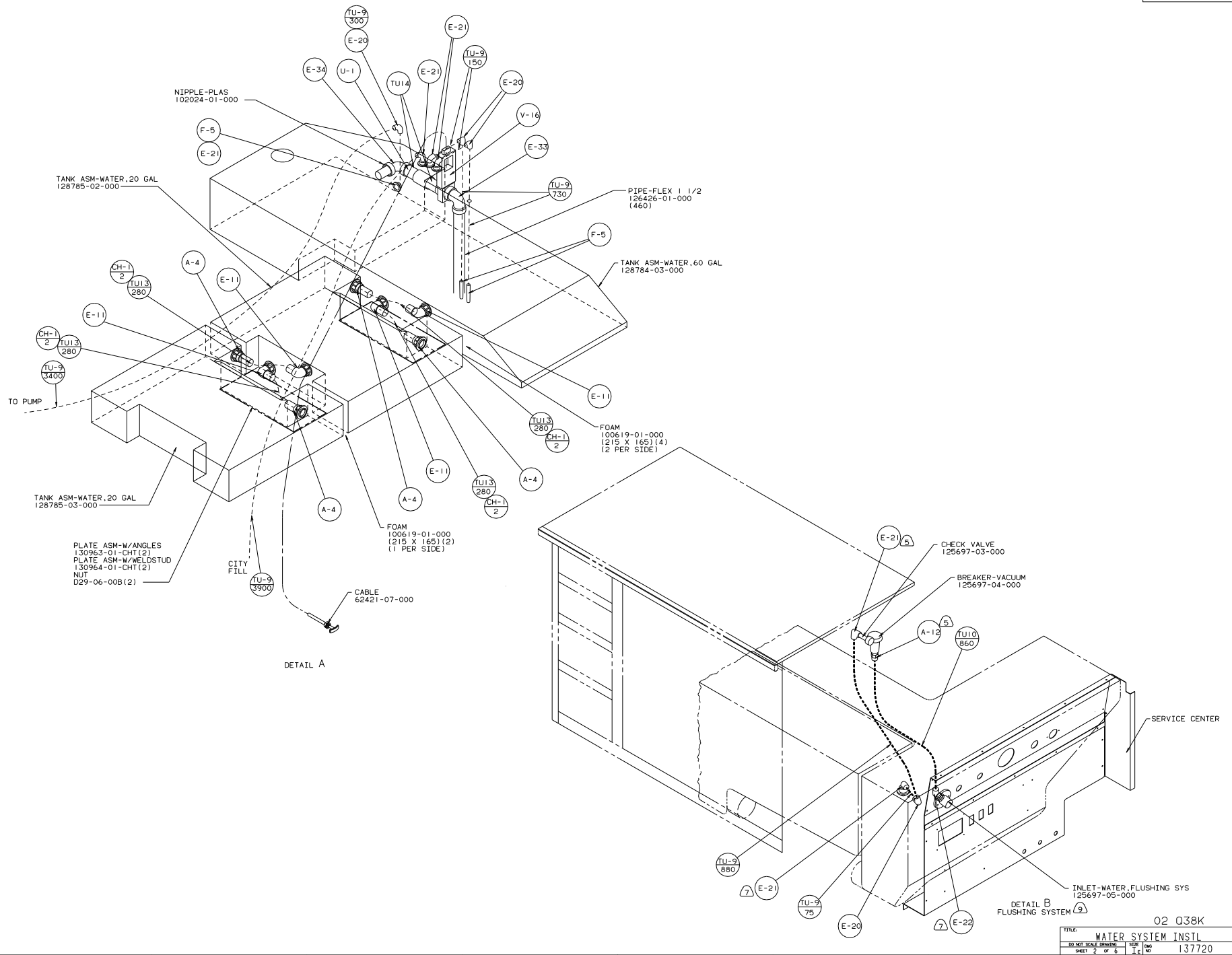
LEGEND	
HOT	-----
COLD	-----

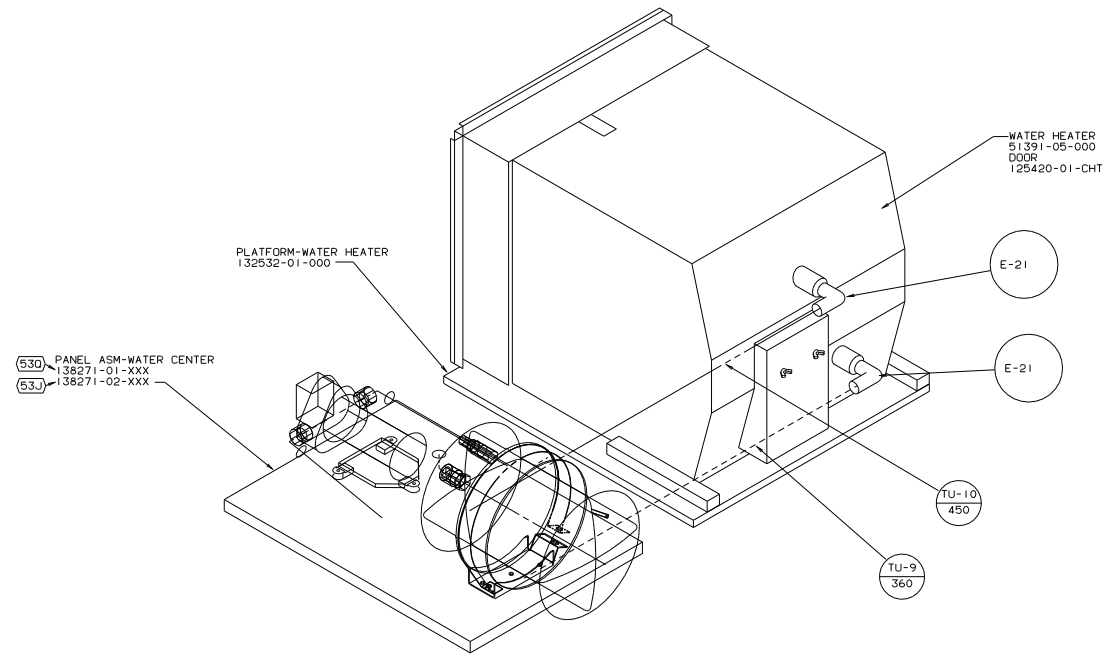
(X-X)
 FOR WATER CALL-OUTS SEE DWG NO. 116230-01-000

WINNERPAC INDUSTRIES, INC. **WINNERPAC** 02 038K

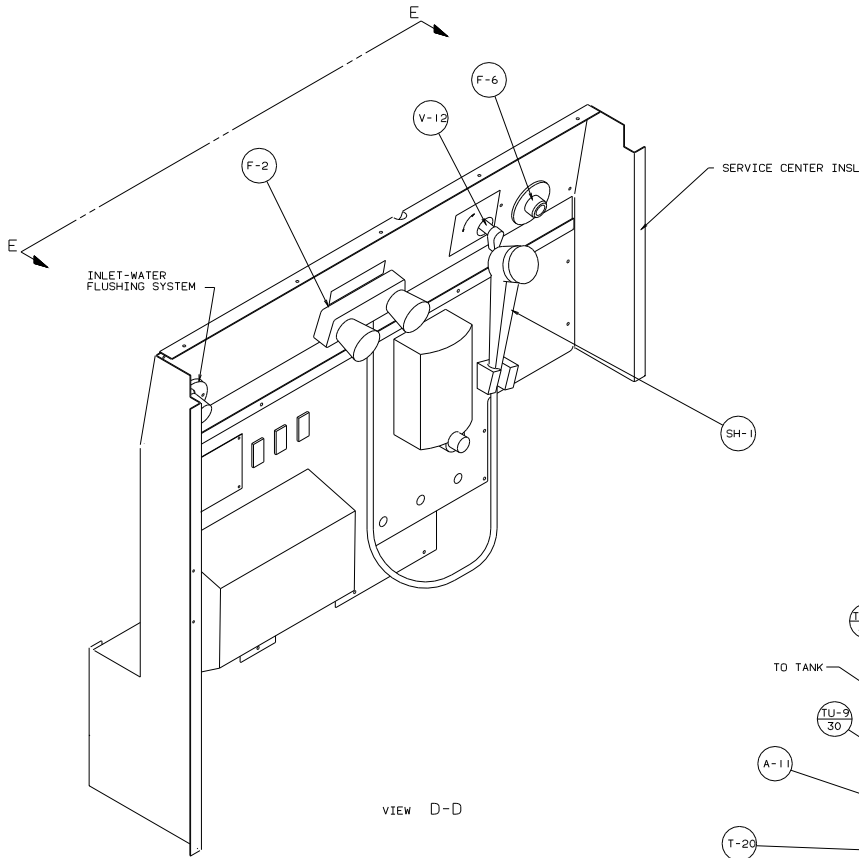
OP/IN	DATE	UNSPECIFIED TOLERANCES ARE:	MATERIAL
CHOP	DATE	WHOLE DIM (IN)	F
F/F	DATE	ONE-PLACE (IN.XI)	.
F/E	DATE	TWO-PLACE (IN.XX)	.
CONP	DATE	THIRD ANGLE PROJECTION	⊕

LANE# 038K TITLE: WATER SYSTEM INSTL
 DIA # SCALE: NONE 3D NET SCALE DRAWING SIZE: 11.6 IN
 ALL DIMENSIONS ARE IN MILLIMETERS SHEET 1 OF 5 REF: 135146 F 137720

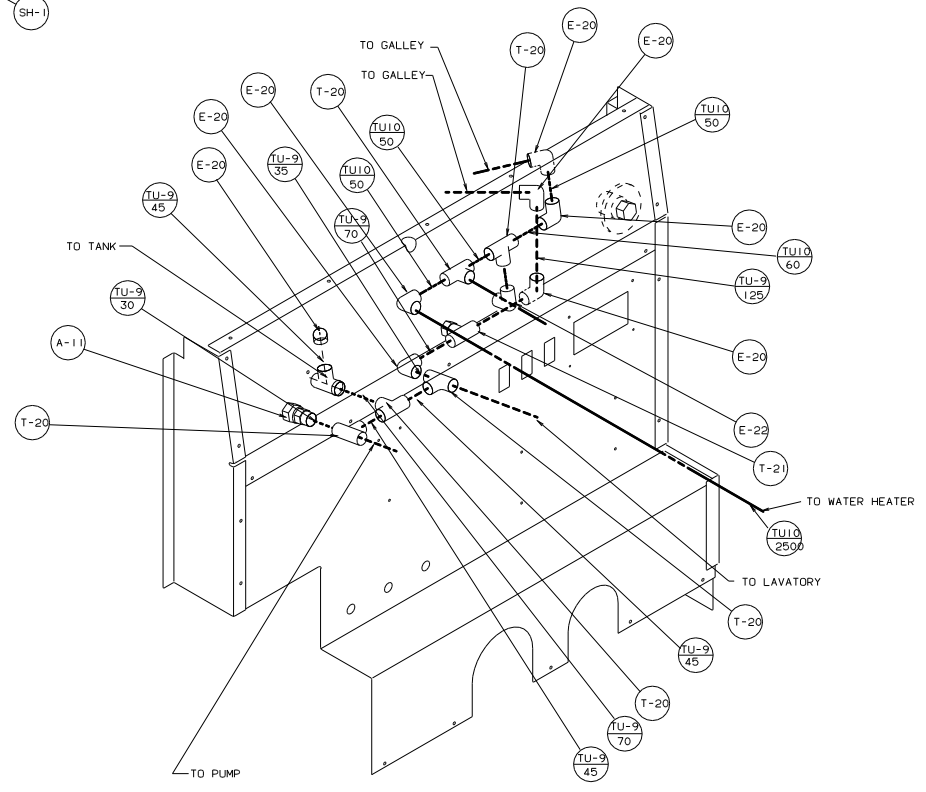




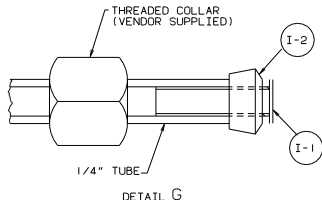
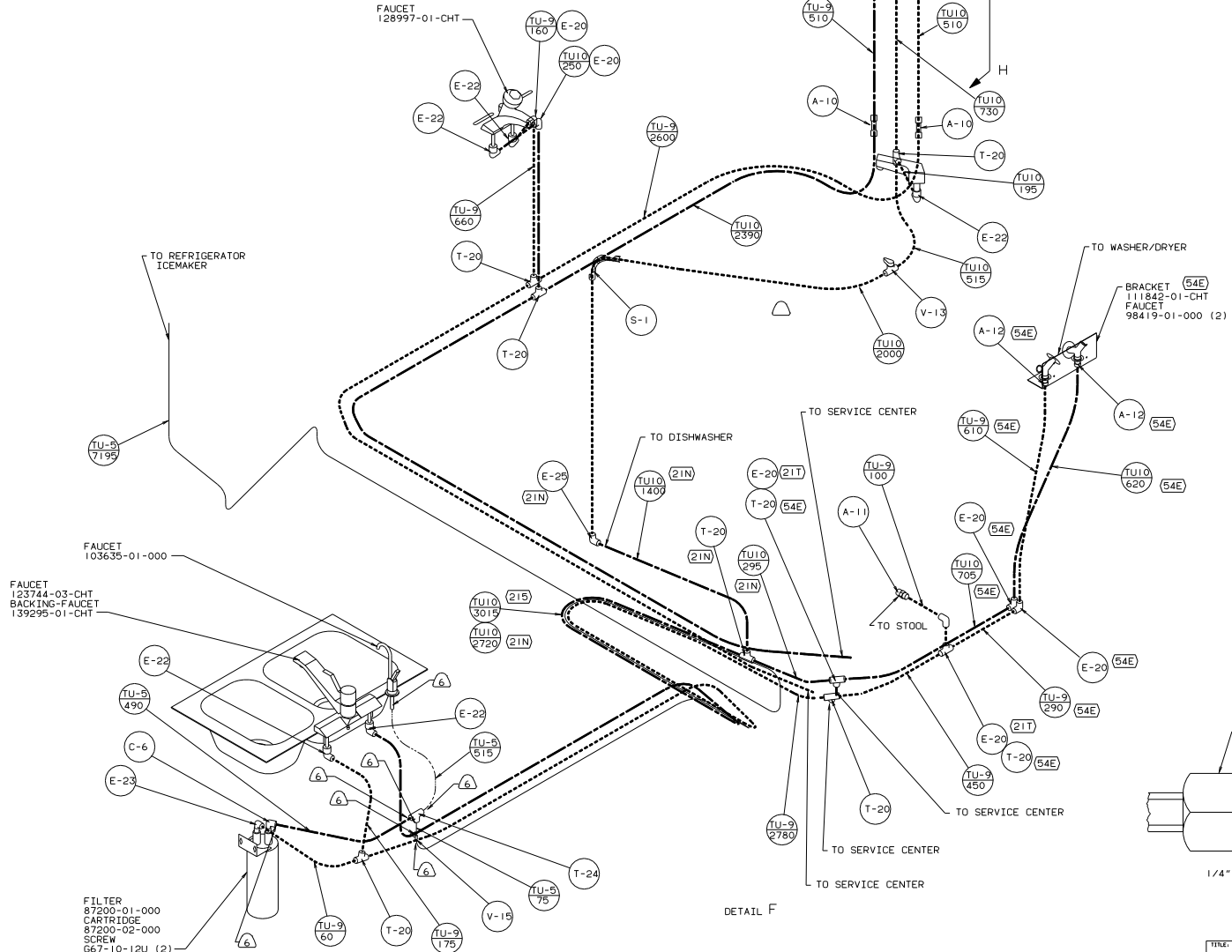
DETAIL C



VIEW D-D

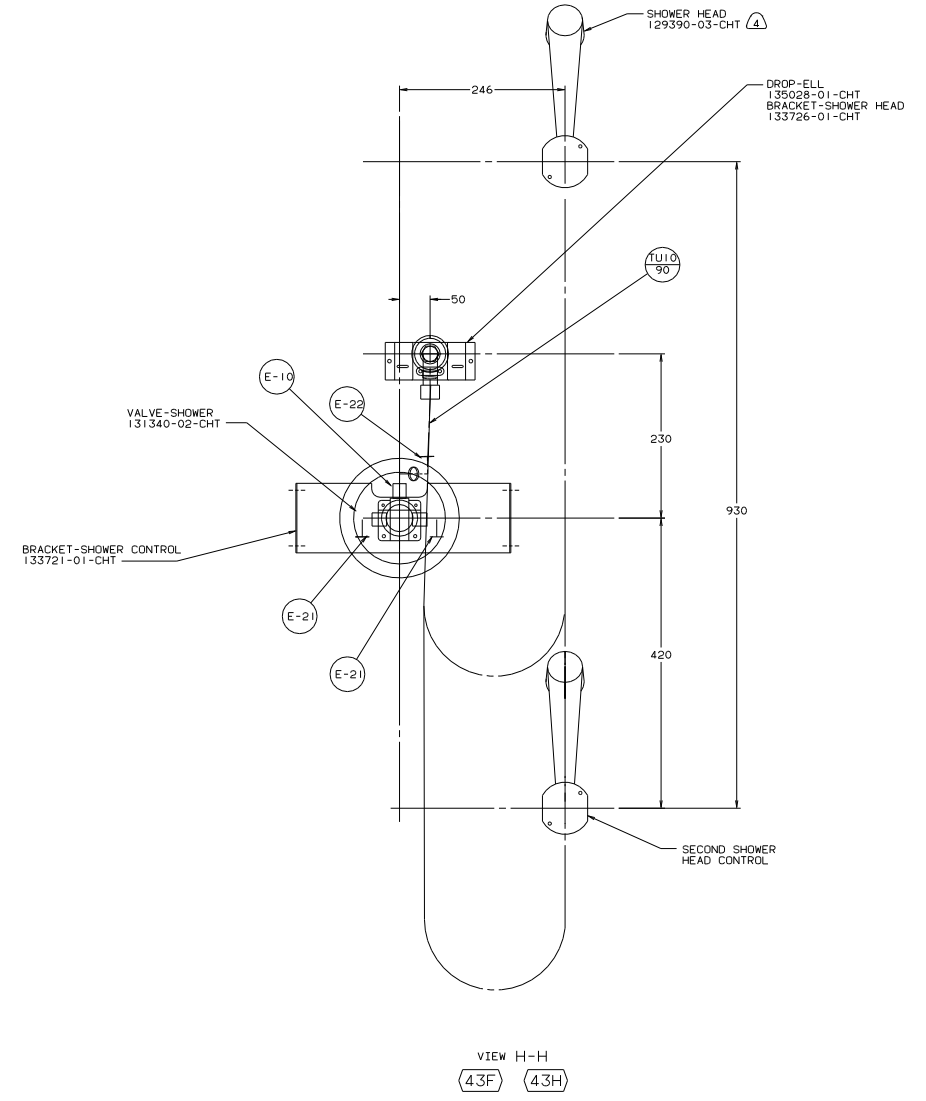
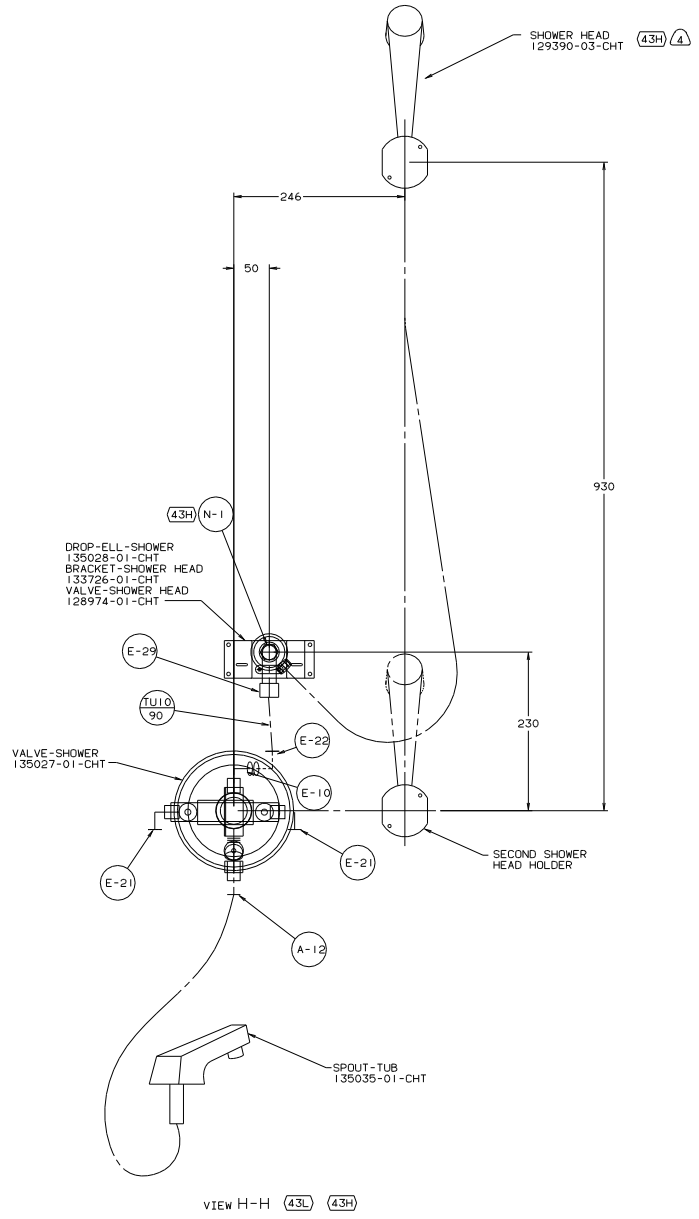


VIEW E-E



DETAIL F

TITLE:		O2 Q38K	
WATER SYSTEM INSTL			
30 NET SCALE DRAWING	DATE	11	11
SHEET 5 OF 6	REV	1	1
	NO		137720



02 Q38K

TITLE: WATER SYSTEM INSTL		DATE: 11/11/02
30 MET SCALE DRAWING	SHEET 6 OF 6	DWG NO 137720