



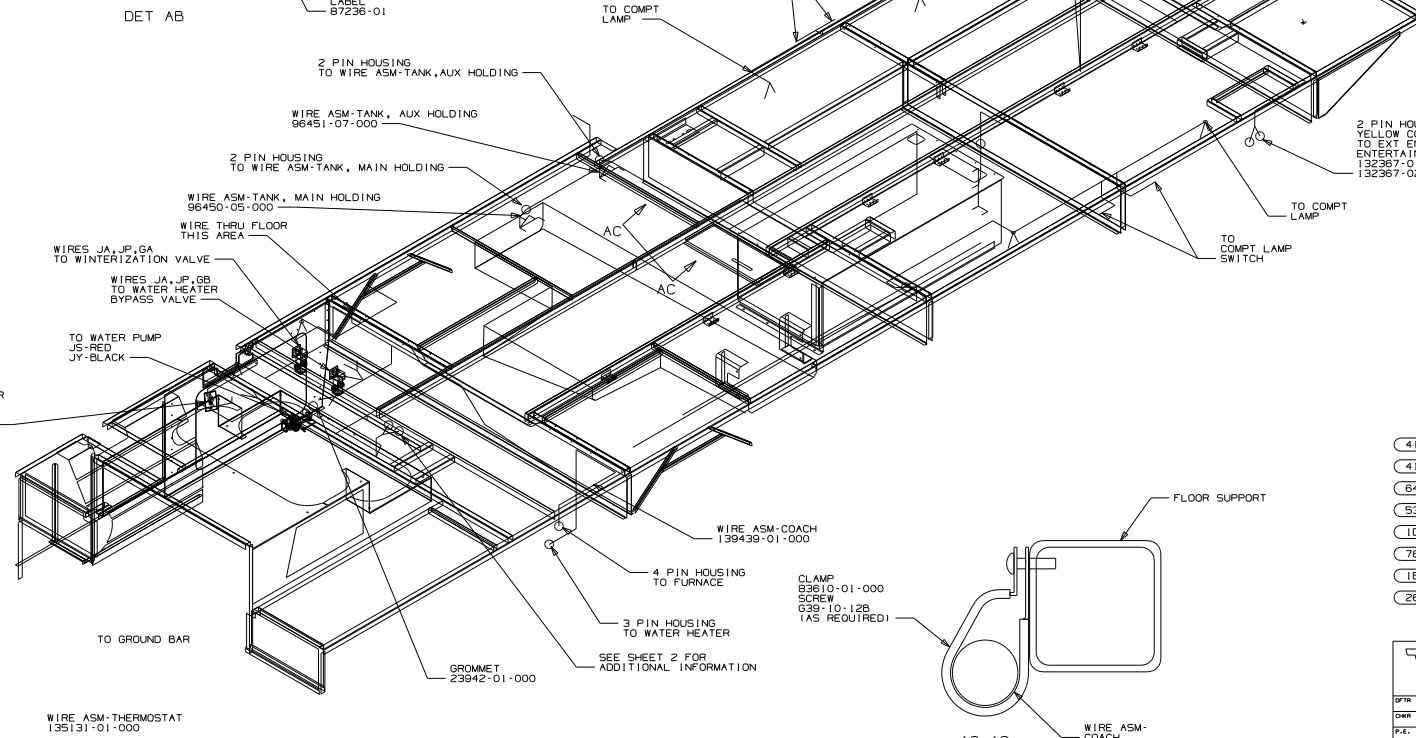
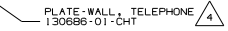
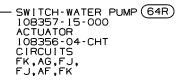
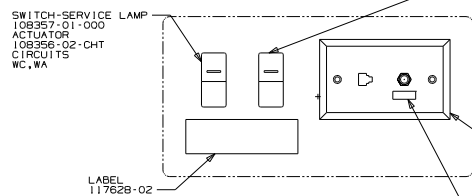
**DANGER**

**Danger of electrical shock, burns or death.** Always remove all power sources before attempting any repair, service or diagnostic work. Power can be present from shore power, generator, inverter or battery. All power sources must be disabled and secured before performing any service.

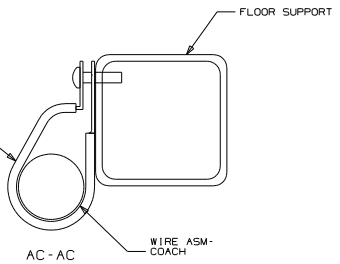


**CAUTION**

If you lack the skills, tools or equipment to perform diagnostic or repair work leave such work to an authorized Winnebago Industries dealer or other qualified shop.



- (41F) SOFA, 4-WAY
- (41G) SOFA, 4-WAY LEATHER
- (64R) EXTERIOR WASH STATION
- (530) WINTERIZING KIT
- (IDS) ENTERTAINMENT CTR/EXT W/CD
- (78C) ENTERTAINMENT CTR/EXT CASSETTE
- (IB1) CODES/STANDARDS USA
- (285) CODES/STANDARDS-CSA/CMVSS



4. CONNECT TELEPHONE WIRES TO MATCHING COLORS ON PLATE-TELEPHONE.
3. WIRES THAT REST ON WIRE TRAYS ARE TO BE TIED DOWN WITH WIRE TIE B343-02-000
2. CLAMP TO FLOOR SUPPORT TUBES AS NECESSARY WITH CLAMP 10497-01-000.
1. ALL WIRE TO BE CLAMPED WITH CLAMP 10495-01-000 OR CLIP 80734-02-000 EVERY 7000. USE SCREW G67-10-12B UNLESS OTHERWISE SPECIFIED.

FOR ELECTRICAL TORQUE SPECIFICATIONS SEE DWG NO. 128783-01-000

X - X FOR ELECTRICAL CALLOUTS SEE DWG NO. 121339-01-000

**WINNEBAGO**

DTR ORIS DATE 03/27/01  
 DWR ALL DIMENSIONS ARE IN MILLIMETERS  
 P.E. FIRST USED  
 W.E. PART NO 02 P36GD

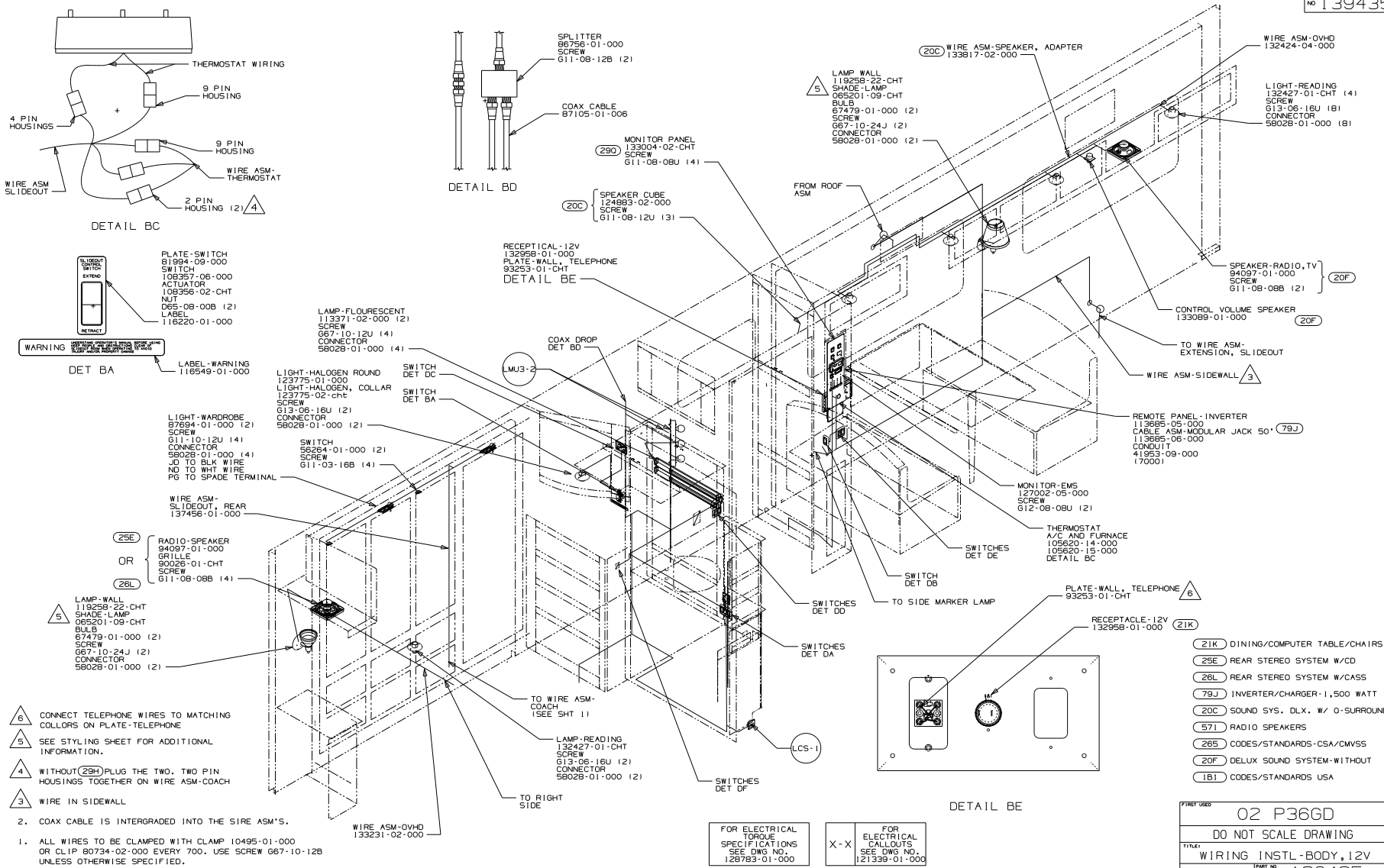
UNSPECIFIED TOLERANCES ARE: MATERIAL:  
 HOLE DIA (X.X) ± .05  
 ONE-PLACE (X.X.X) ± .05  
 TWO-PLACE (X.X.X) ± .05  
 HOLE ± .05

THIRD ANGLE PROJECTION

DO NOT SCALE DRAWING

TITLE: WIRING INSTL-BODY,12V  
 SHEET 1 of 7 PART NO 139435

REF: 1 PAGE 181



NOTES:

1. ALL WIRES TO BE CLAMPED WITH CLAMP 10495-01-000 OR CLIP B0734-02-000 EVERY 700. USE SCREW G67-10-12B UNLESS OTHERWISE SPECIFIED.
2. COAX CABLE IS INTERGRADED INTO THE WIRE ASM'S.

FOR ELECTRICAL TORQUE SPECIFICATIONS SEE DWG NO. 128783-01-000

X - X FOR ELECTRICAL CALLOUTS SEE DWG NO. 121339-01-000

FIRST USED		02 P36GD	
DO NOT SCALE DRAWING			
TITLE: WIRING INSTL-BODY, 12V			
SHEET	2	PART NO	139435

LIGHT DESIGNER  
128788-01-CHT  
CONNECTOR  
58028-01-000 (2)  
SCREW  
G11-08-16J (2)

SWITCHES  
DETAIL DH

SWITCHES  
DETAIL DJ

SWITCHES  
DETAIL DG

12V RECP  
132958-01-000  
DETAIL CB

WALLPLATE TELEPHONE  
93253-01-CHT  
DETAIL CC

LIGHT-DESIGNER  
128788-01-CHT  
SCREW  
G11-08-16J (2)  
CONNECTOR  
58028-01-000 (2)

4 PIN HOUSING  
TO WIRE ASM-ROOF

SPEAKER-RADIO, TV  
S4097-01-000  
SCREW  
G11-08B (2)

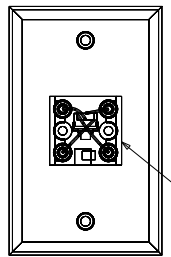
CONTROL VOLUME SPEAKER (20F)

133089-01-000

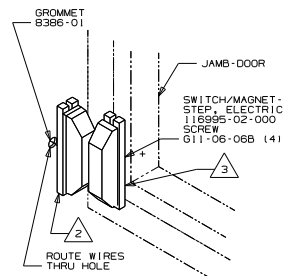
FLU-3

SPEAKER CUBE (20C)

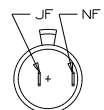
124883-02-000  
SCREW  
G11-08-12U (3)



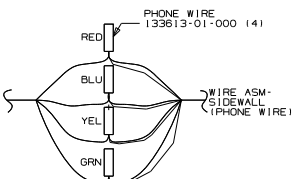
DETAIL CC



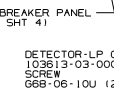
DETAIL CA (1E2)



DETAIL CB



DETAIL CD



DETAIL CE (13B)

12V BREAKER PANEL  
(SEE SHT 4)

DETECTOR-LP GAS  
103613-03-000  
SCREW  
668-06-10U (2)

STUD-ISOLATED  
86233-01-000  
NUT  
D34-06-00B  
SCREW  
G11-08-12B (2)  
BOOT  
77479-02-000

PHONE WIRE  
133613-01-000 (4)

WIRE ASM-  
COACH  
(PHONE WIRE)

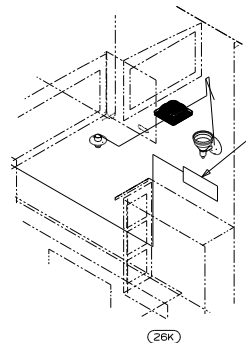
WIRE ASM-  
CHASSIS  
(PHONE WIRE)

TO 12V BREAKER  
PANEL

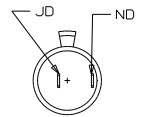
TO WIRE ASM-  
CHASSIS

TO GROUND BAR  
U, L

DETAIL CE (79J)



(26K)



DETAIL CF

LIGHT-READING  
132427-01-CHT  
SCREW  
G13-08-16U (2)  
CONNECTOR  
58028-01-000 (2)

RADIO SPEAKER (25E) (20C)

94087-01-000  
GRILLE  
90026-01-CHT  
SCREW  
G11-08-08B (4)

LAMP-WALL  
119266-25-CHT  
065201-09-CHT  
BLUE  
67479-01-000 (2)  
SCREW  
G57-10-24J (2)  
CONNECTOR  
28028-01-000 (2)

RADIO-WALL MOUNT  
AM/FM CASSETTE  
133307-01-000  
RADIO-WALL MOUNT  
CD/W ALARM  
133-7-02-000  
SCREW  
76790-03-000

WALL-PLATE-TELEPHONE  
93253-01-CHT  
DETAIL CC

RADIO-WALL MOUNT  
AM/FM CASSETTE  
133307-01-000  
RADIO-WALL MOUNT  
CD/W ALARM  
133-7-02-000  
SCREW  
76790-03-000

RECEPTACLE-12V  
132958-01-000  
SCREW  
G11-08-08 (2)  
DETAIL CF

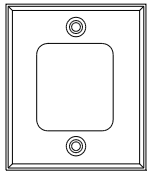
- (20C) SOUND SYS. DLX. W/O-SOUND
- (26K) REAR STEREO SYSTEM WITHOUT
- (28L) REAR STEREO SYSTEM W/CASSETTE
- (25E) REAR STEREO SYSTEM W/CD
- (571) RADIO SPEAKERS
- (285) CODES/STANDARDS-CSA/CMVSS
- (20F) DELUX SOUND SYSTEM-WITHOUT
- (1B1) CODES/STANDARDS USA
- (1E2) ENTRANCE STEP-ELECT. (1B1) (285)

- NOTES:
- 8 CONNECT TELEPHONE WIRES TO MATCHING COLORS ON PLATE-TELEPHONE. SEE WIRING INSTL-FRONT END FOR ADDITIONAL INFORMATION.
  - 7 SEE STYLING SHEET FOR ADDITIONAL INFORMATION.
  - 6 SEE WIRING INSTL-CHASSIS FOR ADDITIONAL INFORMATION. SPEAKER IS MOUNTED TO ROOF.
  - 5 MOUNT SWITCH AND SPACER TO BLOCK ON JAMB ADJUST HEIGHT TO MATCH MAGNET. MOUNT MAGNET USING PILOT HOLES IN SCREEN DOOR FRAME. MOUNT WITH MAGNET TOWARD SWITCH. WIRE ROUTED IN SIDEWALL.
  - 4
  - 3
  - 2
  - 1

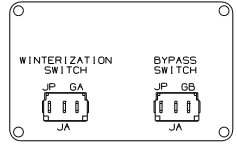
FOR ELECTRICAL  
FORGIVE  
SPECIFICATIONS  
SEE DWG NO.  
128783-01-000

X-X  
FOR  
ELECTRICAL  
CALLOUTS  
SEE DWG NO.  
121339-01-000

FIRST USED		02 P36GD	
DO NOT SCALE DRAWING			
TITLE: WIRING INSTL-DRAWING, 12V			
SHEET	3	PART NO	139435

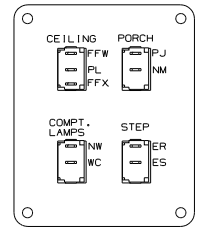


SWITCH-DIMMER  
137859-01-000  
SCREW  
G11-06-10U (2)  
CONNECTOR  
58028-01-000 (2)  
RED-JD  
WHT-PC



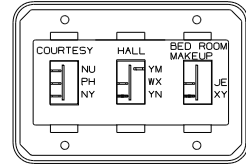
SWITCH-BYPASS  
SWITCH-WINTERIZATION  
(SUPPLIED W/KIT)  
SCREW  
G12-05-16U (4)

DETAIL DC (530)



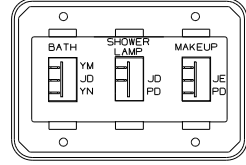
SWITCH  
132180-01-CHT (3)  
132180-02-CHT  
PLATE-SWITCH  
98351-08-CHT  
SCREW  
G11-06-10J (4)

DETAIL DG

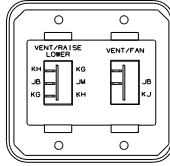


SWITCH  
135740-01-CHT  
135740-02-CHT (2)  
BASE  
135741-03-CHT  
BEZEL  
135742-03-CHT  
SCREW  
G11-08-08U (4)

DETAIL DA

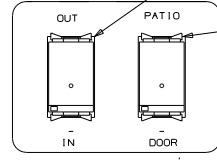


SWITCH  
135740-01-CHT (2)  
135740-02-CHT  
BASE  
135741-03-CHT  
BEZEL  
135742-03-CHT  
SCREW  
G11-08-08U (4)



SWITCH  
135740-01-CHT  
135740-03-CHT  
BASE  
135741-02-CHT  
BEZEL  
135742-02-CHT  
SCREW  
G11-08-08U (4)

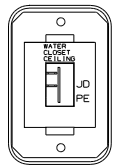
DETAIL DJ (9C)



SWITCH-AWNING CONTROL  
108357-08-000  
ACTUATOR  
108356-12-CHT  
CIRCUITS  
FFK,FFU,FFM,FFN,FFV,FFR

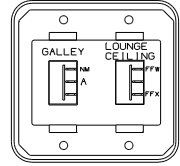
SWITCH-AWNING SELECTOR  
108357-08-000  
ACTUATOR  
108356-13-CHT  
CIRCUITS  
FFU,FFP,FFV,

PLATE  
98351-22-CHT



SWITCH  
135740-01-CHT  
BASE  
135741-01-CHT  
BEZEL  
135742-01-CHT  
SCREW  
G11-08-08U (2)

DETAIL DB



SWITCH  
135740-01-CHT  
135740-02-CHT  
BASE  
135741-02-CHT  
BEZEL  
135742-02-CHT  
SCREW  
G11-08-08U (4)

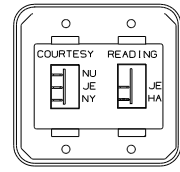
DETAIL DE

DETAIL DD (715)



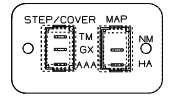
SWITCH  
135740-01-CHT  
BASE  
135741-01-CHT  
BEZEL  
135742-01-CHT  
SCREW  
G11-08-08U (2)

DETAIL DF



SWITCH  
135740-01-CHT  
135740-02-CHT  
BASE  
135741-02-CHT  
BEZEL  
135742-02-CHT  
SCREW  
G11-08-08U (4)

DETAIL DK



SWITCH-MAP  
89308-01-CHT  
SWITCH-STEP COVER (1H9)  
89308-04-CHT  
PLATE-SWITCH  
98351-12-CHT  
SCREW  
G11-06-10U (2)

DETAIL DH

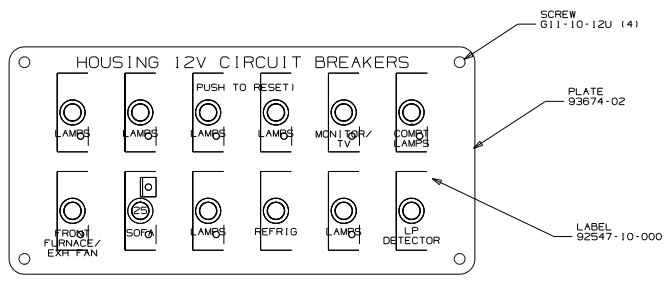
FOR ELECTRICAL  
TORQUE  
SPECIFICATIONS  
SEE DWG NO.  
128783-01-000

FOR ELECTRICAL  
CALLOUTS  
SEE DWG NO.  
121338-01-000

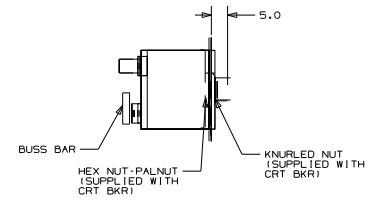
- (530) WINTERIZING KIT
- (1H9) STEPWELL COVER PANEL-SLIDING
- (715) VENT POWER
- (63N) AWNING-ENTRANCE DR, ELECTRIC
- (52N) AWNING-PATIO, ELECTRIC
- (9C1) AWNING-ELECTRIC PACKAGE
- (265) CODES/STANDARDS-CSA/CMVSS
- (1B1) CODES/STANDARDS USA
- (1B1) (265)

PROJECT	02 P36GD
TITLE	DO NOT SCALE DRAWING
WIRING INSTL-BODY	12V
SHEET 4	PART NO 139435

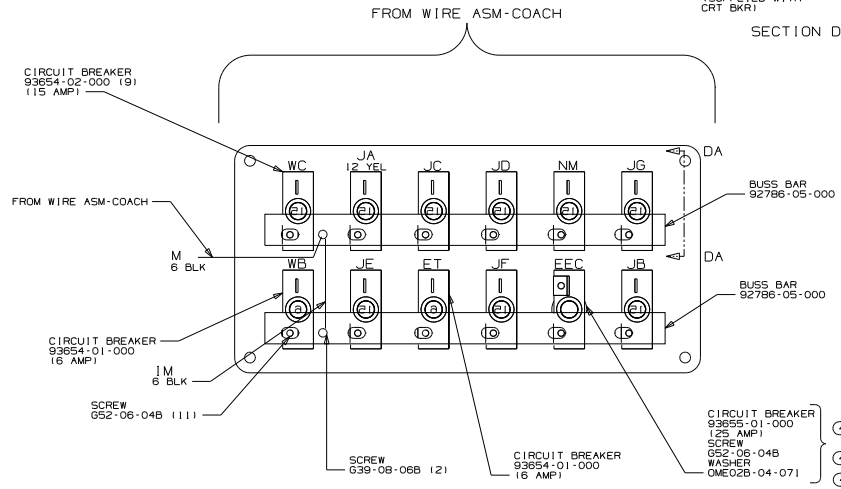
NOTES:  
CONNECT TELEPHONE WIRES TO MATCHING COLORS ON PLATE-TELEPHONE.



CIRCUIT BREAKER  
(FRONT VIEW)



SECTION DA-DA



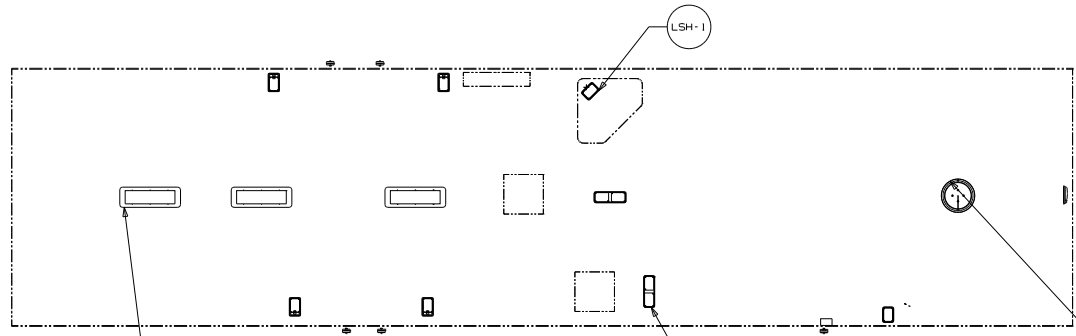
CIRCUIT BREAKER  
(BACK VIEW)

- (41J) REST EASY DUAL CONTROL LEATHER
- (41F) REST EASY MULTI POS LOUNGE
- (41G) REST EASY LEATHER FACED SOF
- (265) CODES/STANDARDS-CSA/CMVSS
- (1B1) CODES/STANDARDS USA

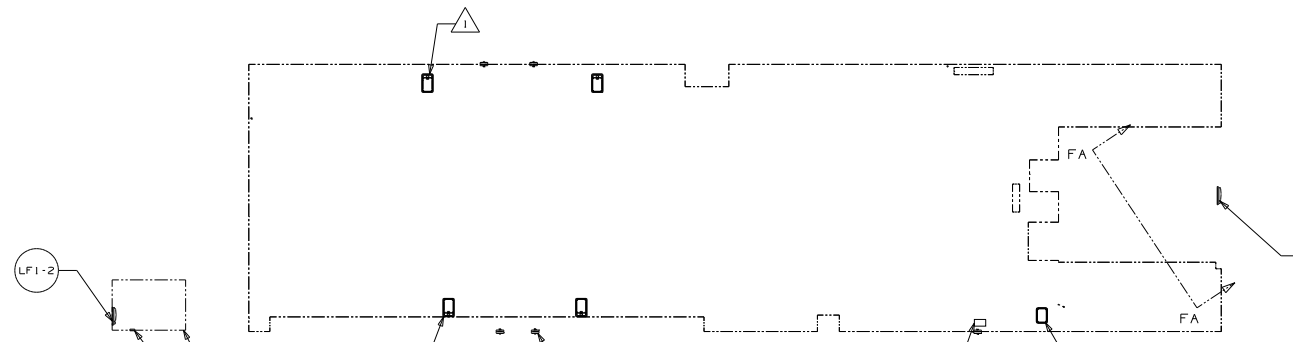
FOR ELECTRICAL TORQUE SPECIFICATIONS SEE DWG NO. 128783-01-000

X - X FOR ELECTRICAL CALLOUTS SEE DWG NO. 121338-01-000

FIRST USED		02 P36GD	
DO NOT SCALE DRAWING			
TITLE: WIRING INSTL-BODY,12V			
SHEET	5	PART NO	139435



LIGHT  
93575-19-CHT  
BULB  
117505-02-000 (5)  
SCREW  
611-08-18U (3)  
CONNECTOR  
58028-01-000 (2)



FRONT LEFT COMPT

SWITCH-PUSHBUTTON  
41250-01-000  
BRACKET-SWITCH, LIGHT  
138494-01-CHT (5)  
SCREW  
G39-08-16E (2)

SWITCH-PUSHBUTTON  
41250-01-000 (5)  
BRACKET-SWITCH, LIGHT  
138494-01-CHT (5)  
SCREW  
G39-08-16E (2)  
WASHER, PLASTIC  
087080-02-CHT (3)

LAMP  
86280-01-000  
SCREW  
067-10-12U (2)  
CONNECTOR  
58028-01-000 (2)

SWITCH-PUSHBUTTON  
41250-01-000  
BRACKET-SWITCH, LIGHT  
138494-01-CHT  
SCREW  
G39-08-16E (2)

- (48M) LIGHTS-INCANDESCENT
- (48V) LIGHTS-FLUORESCENT
- (265) CODES/STANDARDS-CSA/CMVSS
- (1B1) CODES/STANDARDS USA

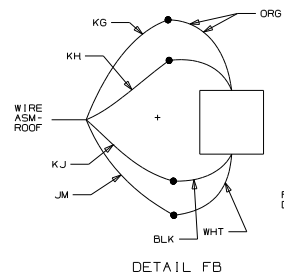
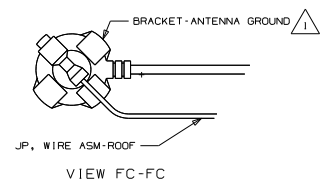
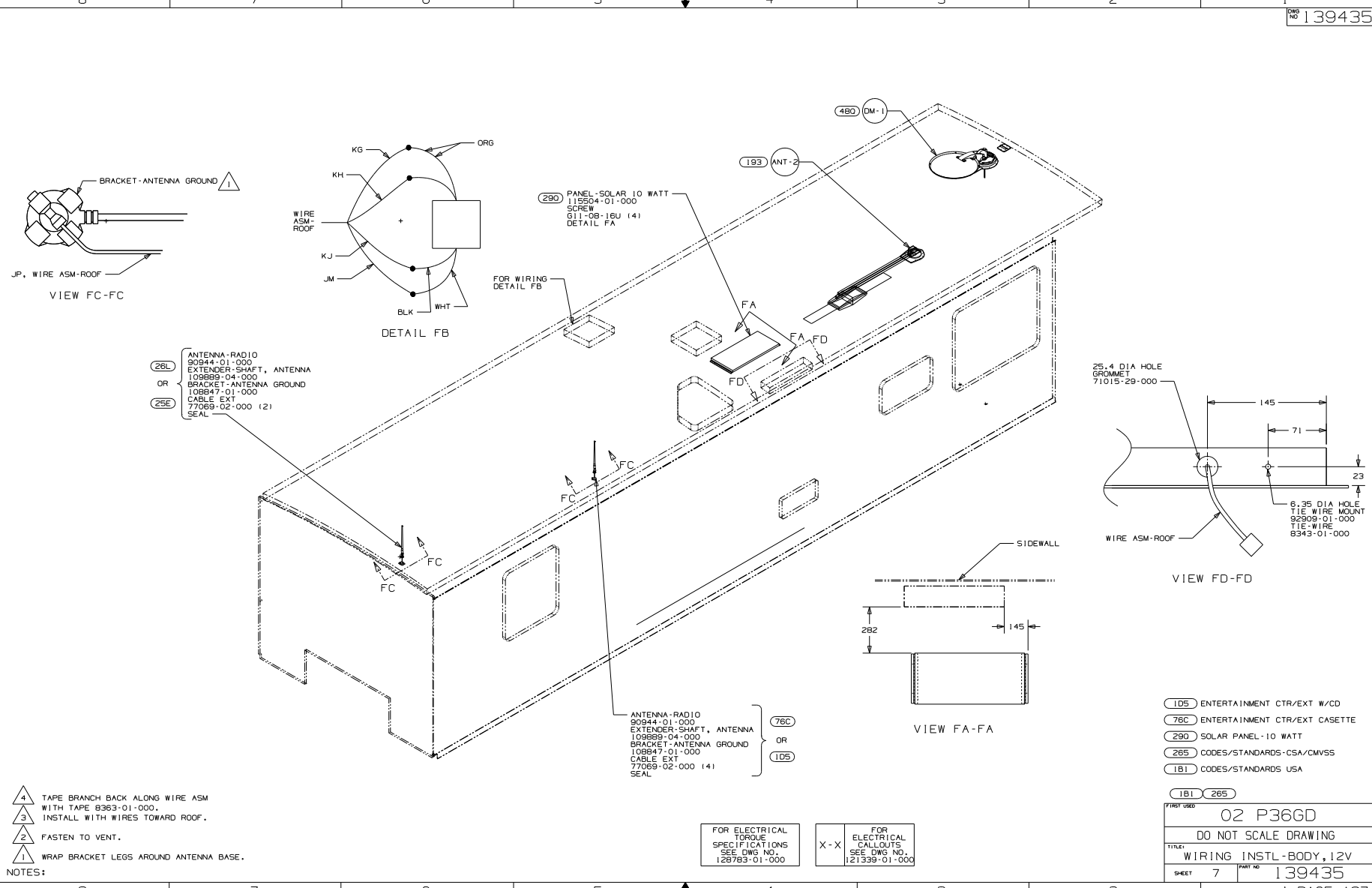
(1B1) (265)

NOTES:  
1 LAMPS TO BE MOUNTED WITH SWITCH OUTBOARD  
AND 75 ±20 FROM EDGE OF FLOOR.

FOR ELECTRICAL  
TORQUE  
SPECIFICATIONS  
SEE DWG NO.  
128783-01-000

FOR  
ELECTRICAL  
CALLOUTS  
SEE DWG NO.  
121338-01-000

FIRST USED		02 P36GD	
DO NOT SCALE DRAWING			
TITLE: WIRING INSTL-BODY,12V			
SHEET	6	PART NO	139435



- (26L) ANTENNA-RADIO 90944-01-000  
EXTENDER-SHAFT, ANTENNA 109889-04-000  
BRACKET-ANTENNA GROUND 108847-01-000  
CABLE EXT 77069-02-000 (2)  
SEAL
- (25E)

- (290) PANEL-SOLAR 10 WATT 115504-01-000  
SCREW 611-08-16U (14)  
DETAIL FA

- ANTENNA-RADIO 90944-01-000  
EXTENDER-SHAFT, ANTENNA 109889-04-000  
BRACKET-ANTENNA GROUND 108847-01-000  
CABLE EXT 77069-02-000 (14)  
SEAL

- (76C) OR (105)

- (4) TAPE BRANCH BACK ALONG WIRE ASM WITH TAPE 8363-01-000.
- (3) INSTALL WITH WIRES TOWARD ROOF.
- (2) FASTEN TO VENT.
- (1) WRAP BRACKET LEGS AROUND ANTENNA BASE.

NOTES:

FOR ELECTRICAL TORQUE SPECIFICATIONS SEE DWG NO. 128783-01-000

FOR ELECTRICAL CALLOUTS SEE DWG NO. 121338-01-000

- (105) ENTERTAINMENT CTR/EXT W/CD
- (76C) ENTERTAINMENT CTR/EXT CASSETTE
- (290) SOLAR PANEL-10 WATT
- (265) CODES/STANDARDS-CSA/CMVSS
- (1B1) CODES/STANDARDS USA

FINISH CODE	02 P36GD
DO NOT SCALE DRAWING	
TITLE	WIRING INSTL-BODY, 12V
SHEET 7	PART NO 139435