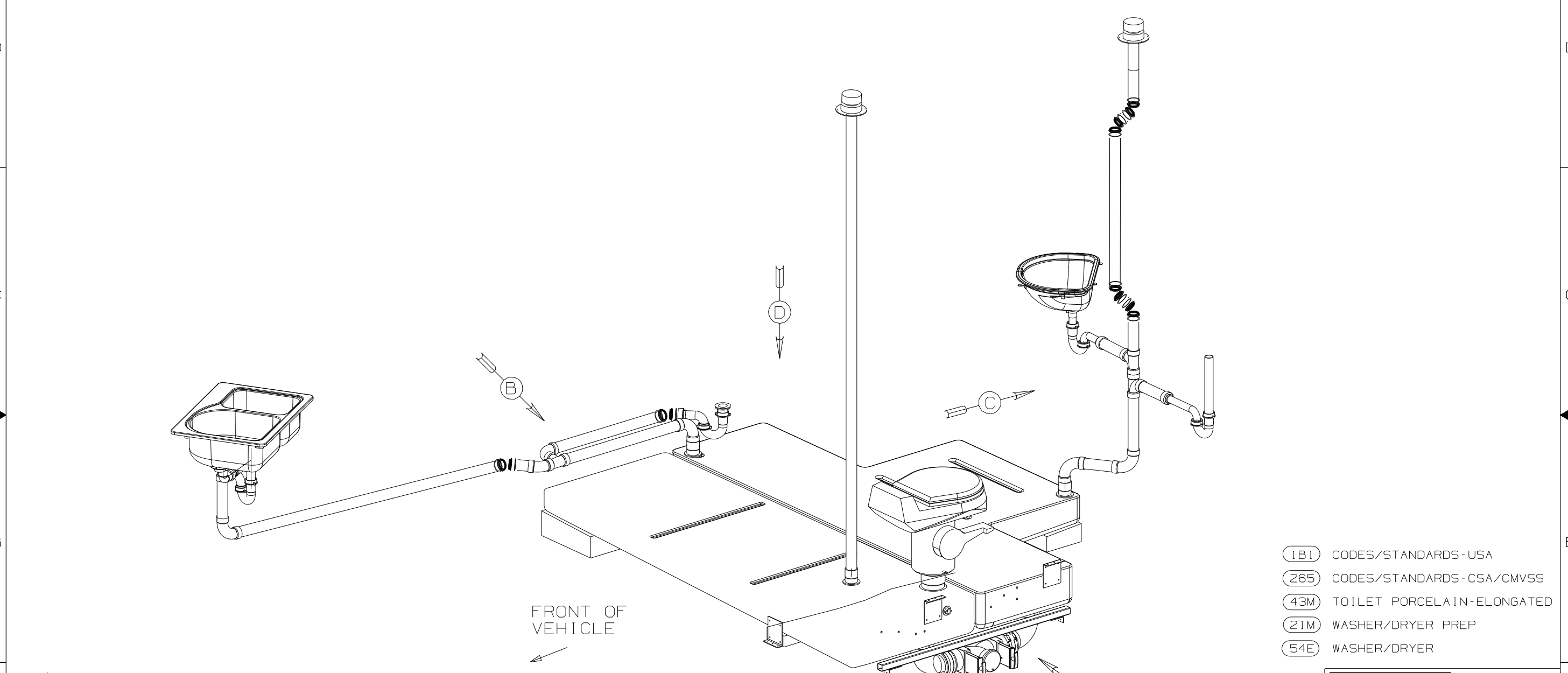


DWG NO	-----
13956-001	RRH SHOWN
13956-002	LH HOPPOSITE

RELEASE	REV DATE	DWG NO	139561
REV ZONE	REVISION RECORD	DATE	DFTR-016



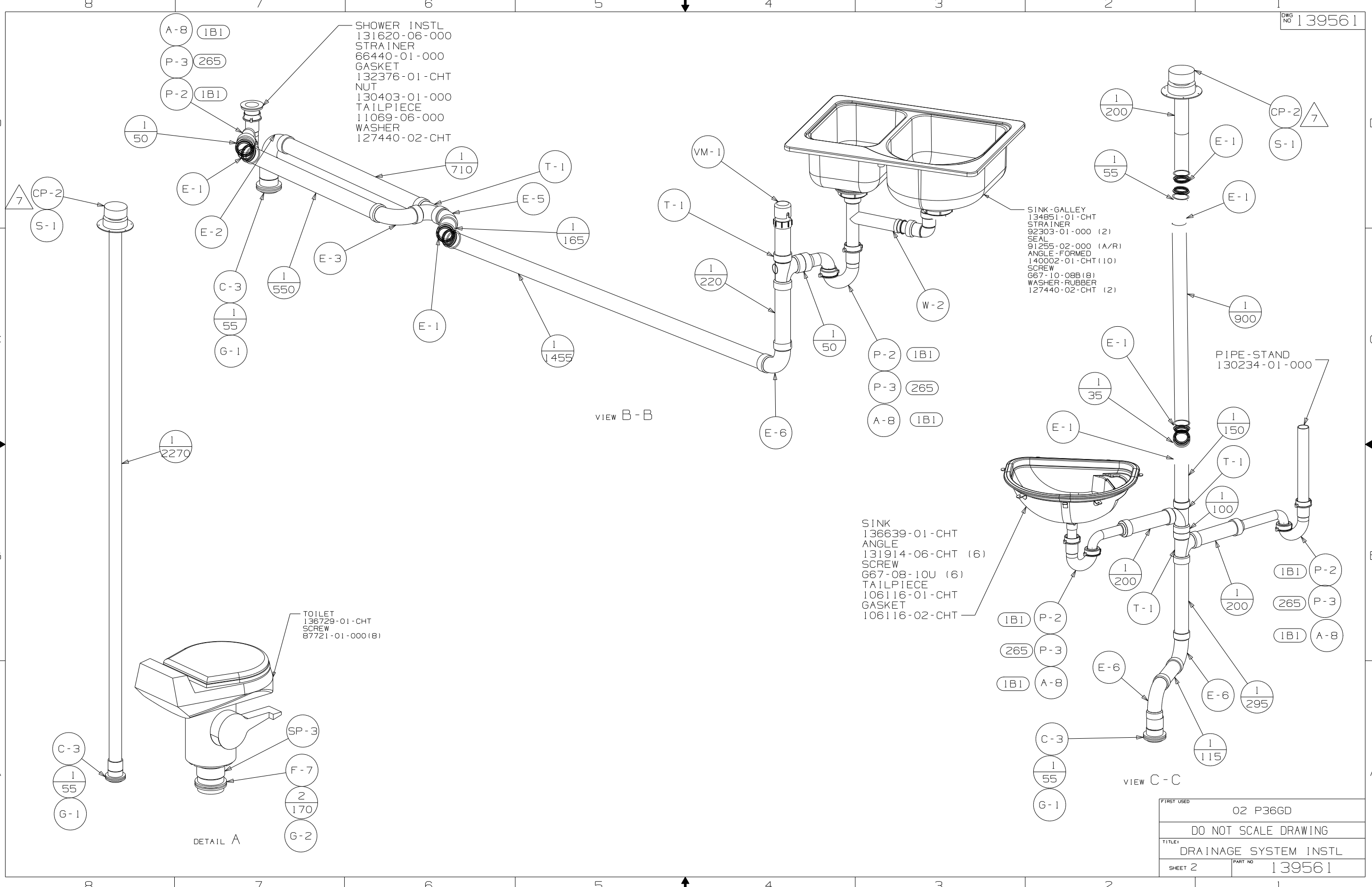
- (1B1) CODES/STANDARDS-USA
- (265) CODES/STANDARDS-CSA/CMVSS
- (43M) TOILET PORCELAIN-ELONGATED
- (21M) WASHER/DRYER PREP
- (54E) WASHER/DRYER

- △ (B) FASTEN TO BOTTOM OF UPPER FLOOR.
- △ (7) VENT PIPE MUST PROJECT 51 MIN AND 63.5 MAX ABOVE ROOF FOR PROPER FIT AND FUNCTION.
- 6. FOR CANADIAN UNITS EACH HOLDING TANK SHALL HAVE A CSA APPROVAL STAMPED NEAR THE IAMPO APPROVAL.
- 5. SEAL AROUND SHOWER WITH SILICONE.
- 4. ALL EXTERIOR OPENINGS AROUND PIPE TO BE SEALED WITH 100744-01-000.
- 3. ALL PIPE AND FITTINGS TO BE ASSEMBLED WITH SOLVENT 4020-01-000.
- 2. SLOPE OF TRAP ARM MUST BE 6 PER 305 MM.
- 1. SLOPE OF HORIZONTAL PIPING TO BE 6 PER 305 MM.

NOTES:

(X-X)  
FOR  
DRAINAGE  
CALLOUTS  
SEE DWG NO  
116229-01-000

<b>WINNEBAGO</b>		COPYRIGHT 2002 WINNEBAGO INDUSTRIES, INC.	
DFTR	ORIG. DATE	ALL DIMENSIONS ARE IN MILLIMETERS	
CHKR		FIRST USED	
P.E.		02 P36GD	
M.E.		UNSPECIFIED TOLERANCES ARE:	
DSNR		MATERIAL:	
		WHOLE DIM (X)	: 7
		ONE-PLACE (X.X)	:
		TWO-PLACE (X.XX)	:
		ANGLE	:
THIRD ANGLE PROJECTION		DO NOT SCALE DRAWING	
TITLE: DRAINAGE SYSTEM INSTL			
SHEET 1 OF 3		PART NO 139561	



SHOWER INSTL  
 131620-06-000  
 STRAINER  
 66440-01-000  
 GASKET  
 132376-01-CHT  
 NUT  
 130403-01-000  
 TAILPIECE  
 11069-06-000  
 WASHER  
 127440-02-CHT

SINK-GALLEY  
 134851-01-CHT  
 STRAINER  
 92303-01-000 (2)  
 SEAL  
 91255-02-000 (A/R)  
 ANGLE-FORMED  
 140002-01-CHT (10)  
 SCREW  
 G67-10-08B (8)  
 WASHER-RUBBER  
 127440-02-CHT (2)

SINK  
 136639-01-CHT  
 ANGLE  
 131914-06-CHT (6)  
 SCREW  
 G67-08-10U (6)  
 TAILPIECE  
 106116-01-CHT  
 GASKET  
 106116-02-CHT

TOILET  
 136729-01-CHT  
 SCREW  
 87721-01-000 (8)

PIPE-STAND  
 130234-01-000

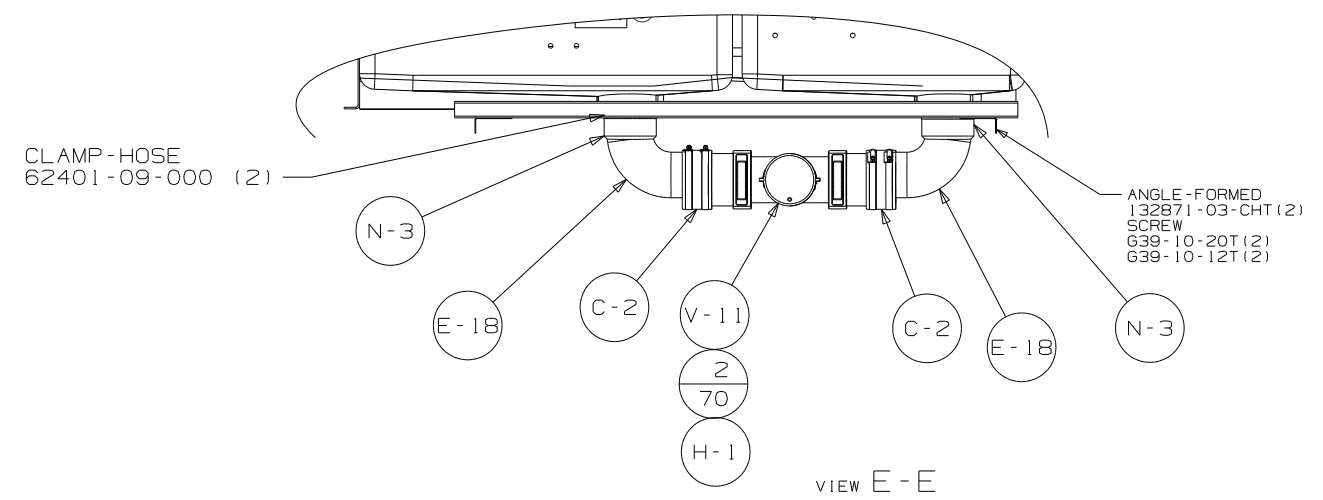
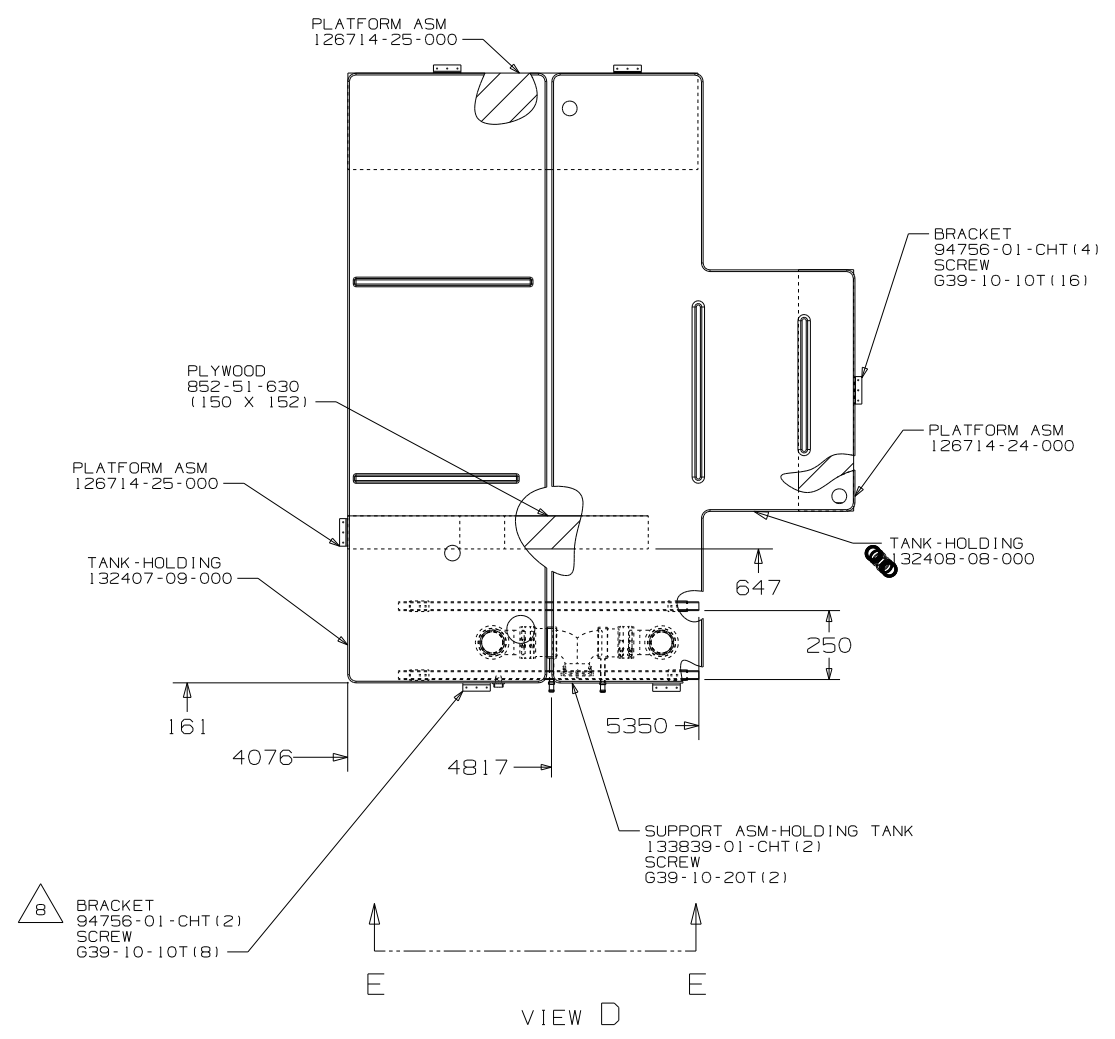
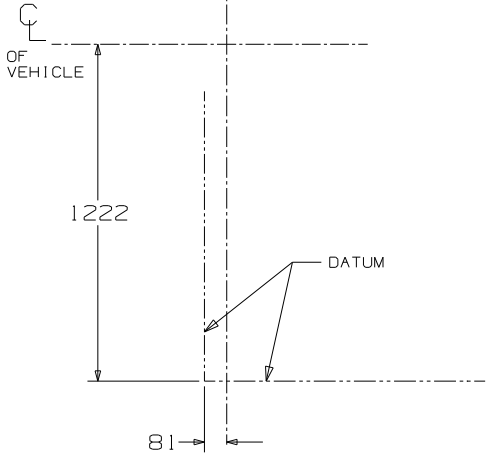
DETAIL A

VIEW B-B

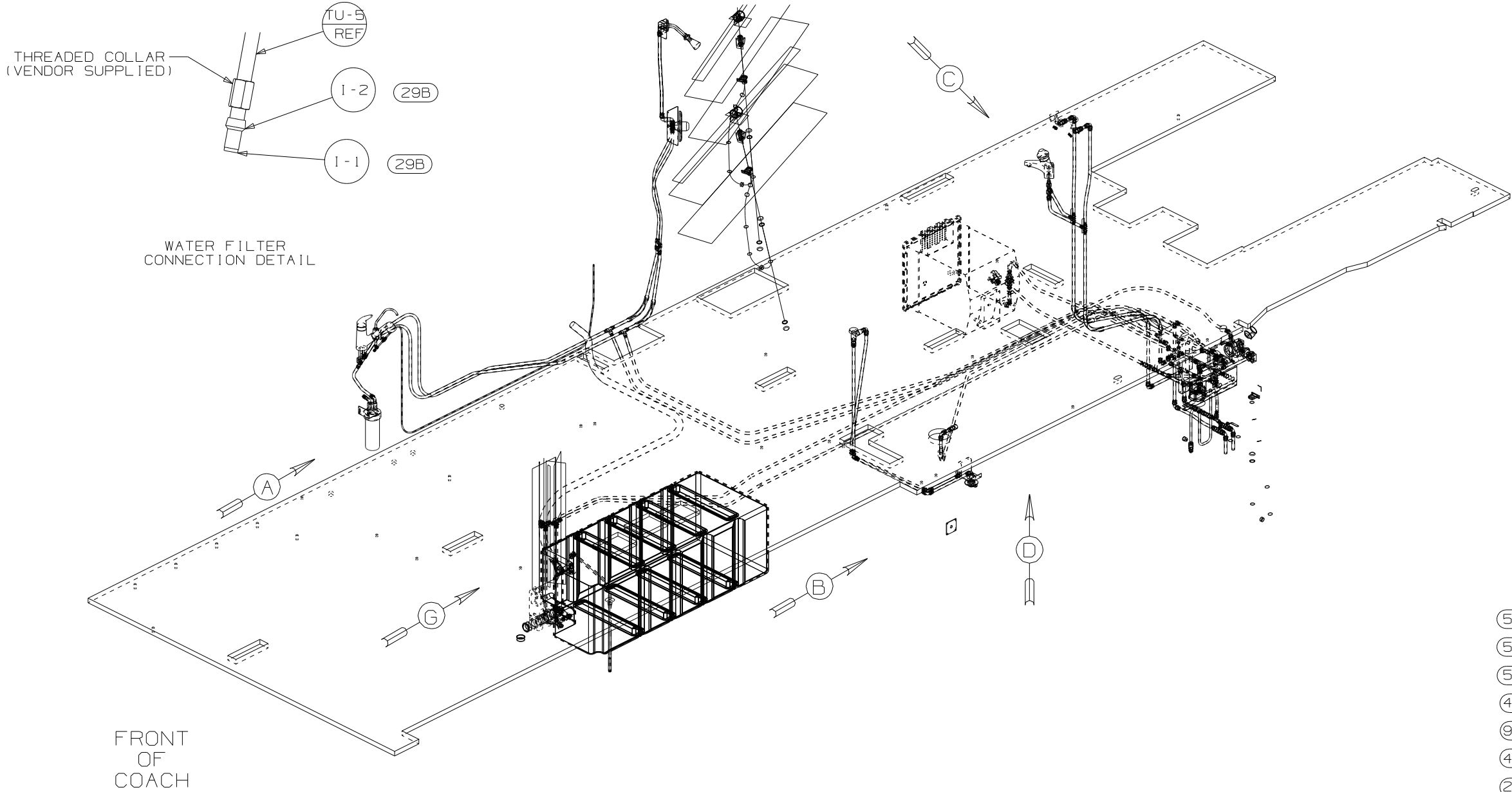
VIEW C-C

FIRST USED	02 P36GD
DO NOT SCALE DRAWING	
TITLE	DRAINAGE SYSTEM INSTL
SHEET 2	PART NO 139561

FRONT AXLE



FIRST USED	02 P36GD
TITLE	DO NOT SCALE DRAWING
	DRAINAGE SYSTEM INSTL
SHEET 3	PART NO 139561

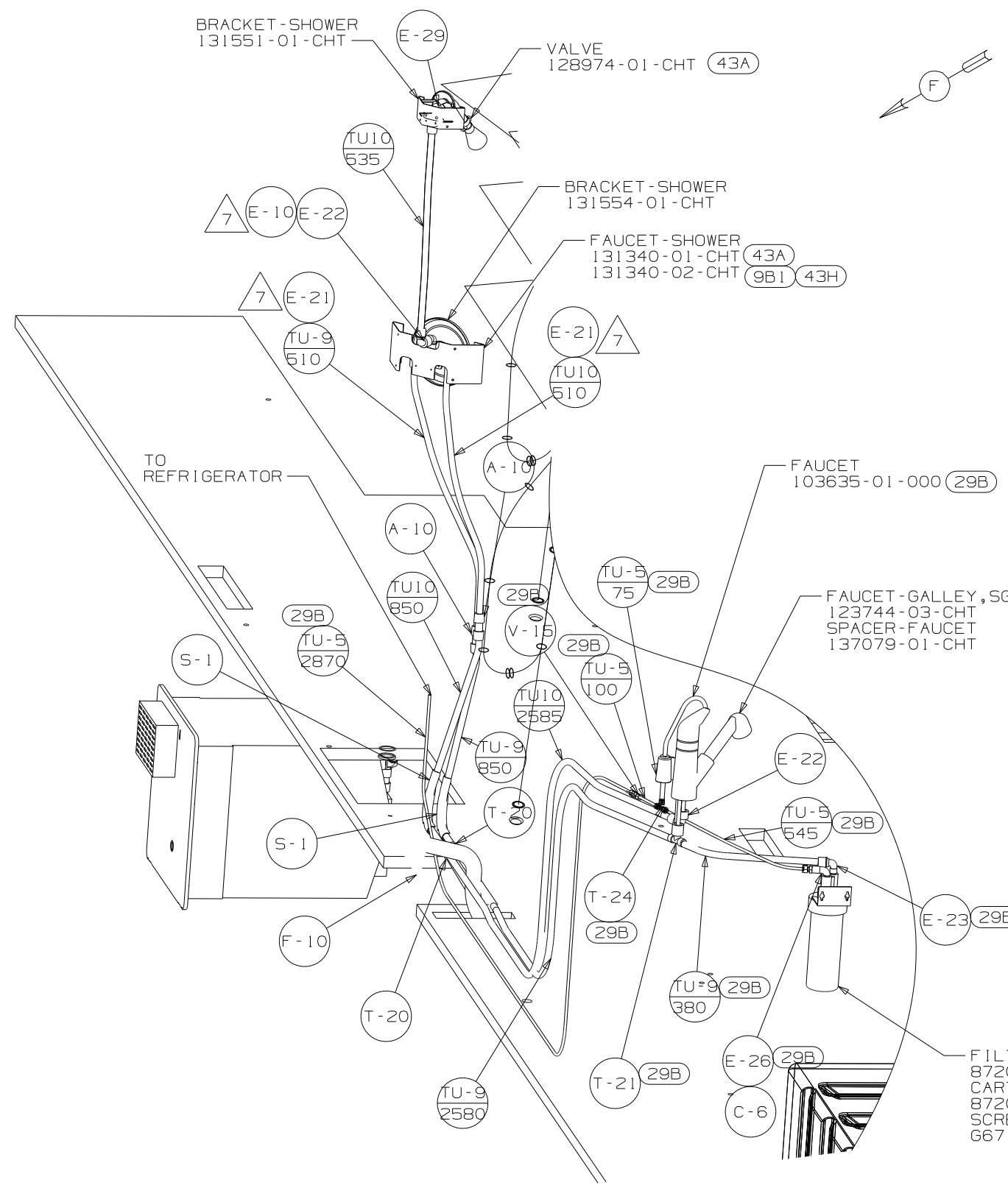


- (53P) WINTERIZING VALVE, MANUAL
- (53Q) WINTERIZING KIT
- (53J) WATER HEATER BY-PASS-VALVE
- (43A) SHOWER HEAD FIXED
- (9B1) SHOWER PACKAGE
- (44F) BATH COUNTERTOP SOLID SURFACE
- (29B) WATER PURIFIER
- (79W) 4-DOOR REFRIG

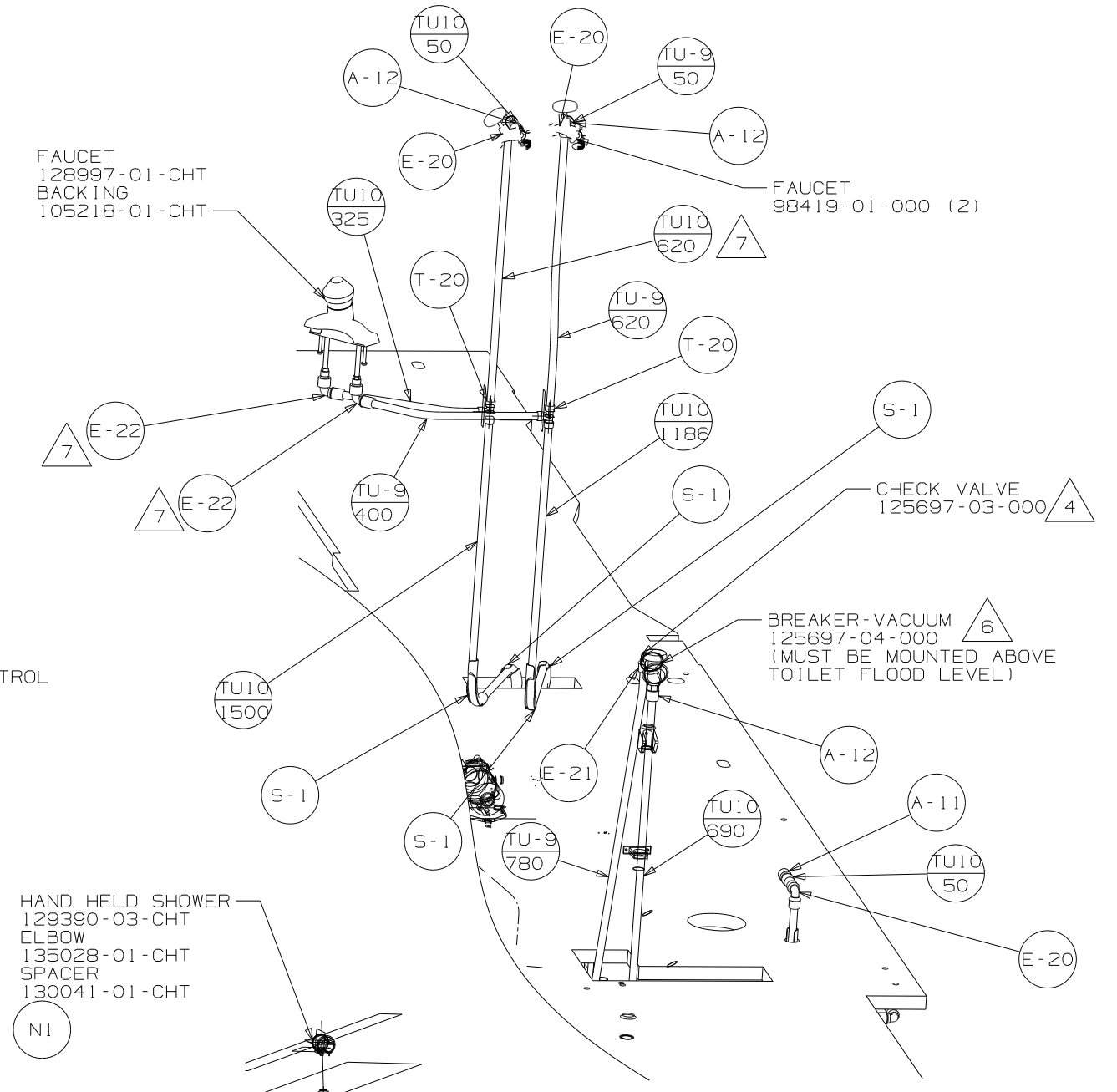
- NOTES:
1. PLASTIC FITTINGS TO BE SEALED WITH SEALANT 84456-01-000
  2. TUBING TO BE INSTALLED WITH SUFFICIENT SLOPE TO PROVIDE DRAINAGE TO NEAREST VALVE.
  3. ALL TUBING TO BE SECURED AT 1200 INTERVALS MAXIMUM WITH CLAMP 10495-01-000 OR CLIP 9151-01-000 AND SCREW G67-10-12B.
  4. FLUSHING SYSTEM REQUIRES 125697-06-000 INSTRUCTION SHEET.
  5. ADD TEFLON TAPE 10405-02-000 TO FITTING.
  6. ADD TEFLON TAPE 10405-03-000 TO FITTING.
  7. ADD TEFLON TAPE 10405-01-000 TO FITTING.
  8. APPLY DECAL INSIDE OF UPPER SHOWER HEAD HOLDER TO RETAIN HAND SHOWER UNIT INSIDE OF HOLDER.

X-X  
FOR WATER CALLOUTS SEE DWG NO. 116230-01-000

<b>WINNEBAGO</b>		COPYRIGHT 2002 WINNEBAGO INDUSTRIES, INC.	
DFTR	ORIG. DATE	ALL DIMENSIONS ARE IN MILLIMETERS	
CHKR		FIRST USED	
P.E.		02 P36GD	
M.E.		UNSPECIFIED TOLERANCES ARE:	
DSNR		MATERIAL:	
		WHOLE DIM (X)	: 7
		ONE-PLACE (X.X)	:
		TWO-PLACE (X.XX)	:
		ANGLE	:
THIRD ANGLE PROJECTION			
DO NOT SCALE DRAWING			
TITLE: WATER SYSTEM INSTL			
SHEET 1 OF 6		PART NO 139562	



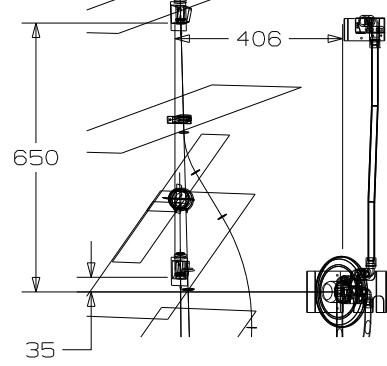
VIEW A



VIEW B

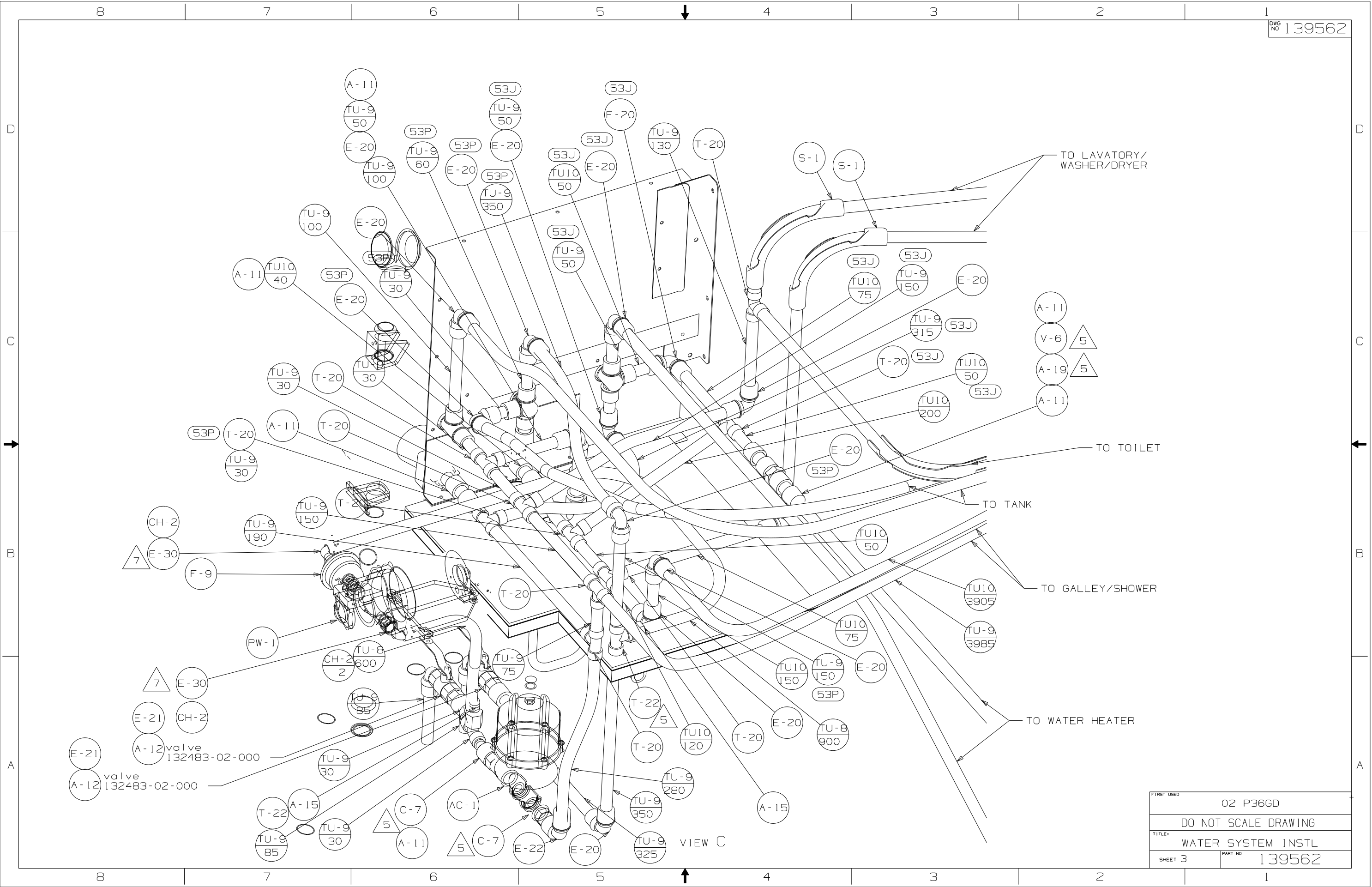
HAND HELD SHOWER  
 129390-03-CHT  
 ELBOW  
 135028-01-CHT  
 SPACER  
 130041-01-CHT  
 (N1)

FILTER  
 87200-01-000 (29B)  
 CARTRIDGE  
 87200-02-000 (29B)  
 SCREW  
 G67-10-12U (2) (29B)



VIEW H (9B1) (43H)

FIRST USED	02 P36GD
DO NOT SCALE DRAWING	
TITLE	WATER SYSTEM INSTL
SHEET 2	PART NO 139562



VIEW C

FIRST USED	02 P36GD
TITLE	DO NOT SCALE DRAWING
SHEET 3	WATER SYSTEM INSTL
PART NO	139562

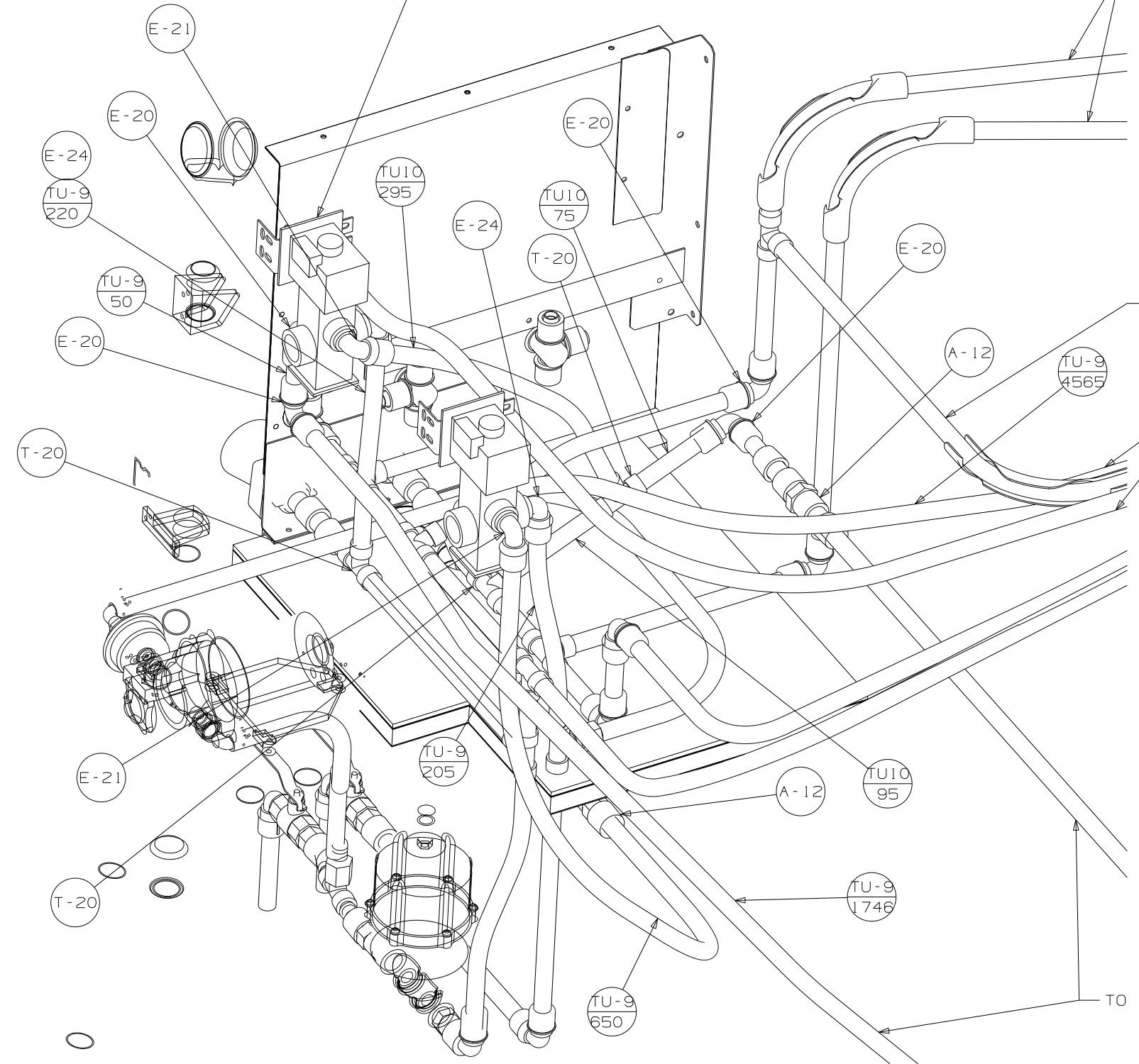
WINTERIZATION SYSTEM  
W/O TANK  
118569-03-000  
BRACKET  
109216-05-CHT

TO LAVATORY/  
WASHER/DRYER

TO TOILET

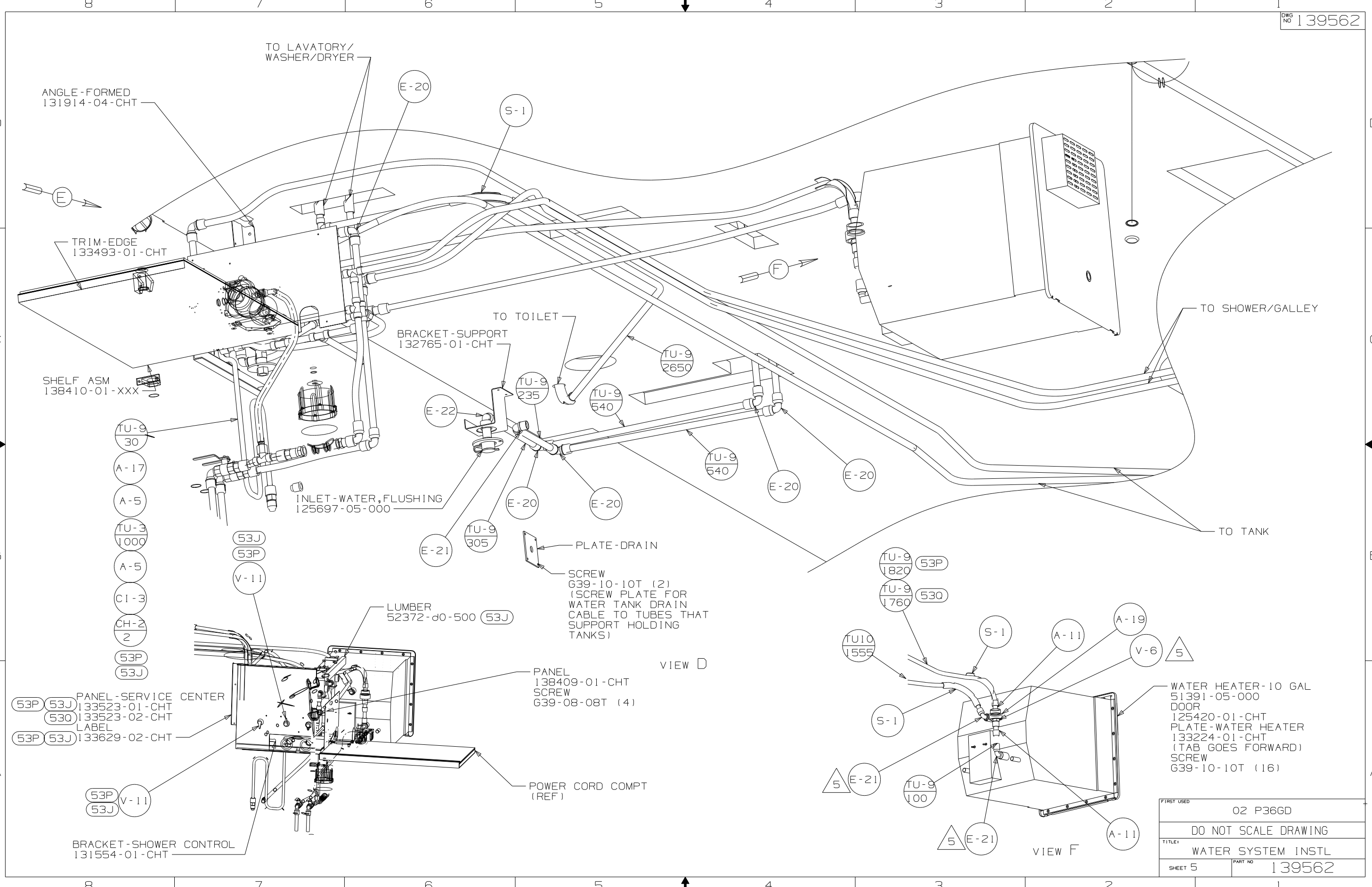
TO TANK

TO WATER HEATER



VIEW C  
(530)

FIRST USED	02 P36GD
TITLE	DO NOT SCALE DRAWING
SHEET 4	PART NO 139562



ANGLE - FORMED  
131914-04-CHT

TO LAVATORY/  
WASHER/DRYER

TRIM-EDGE  
133493-01-CHT

SHELF ASM  
138410-01-XXX

TO TOILET

BRACKET-SUPPORT  
132765-01-CHT

TO SHOWER/GALLEY

TO TANK

INLET-WATER, FLUSHING  
125697-05-000

PLATE-DRAIN

SCREW  
G39-10-10T (2)  
(SCREW PLATE FOR  
WATER TANK DRAIN  
CABLE TO TUBES THAT  
SUPPORT HOLDING  
TANKS)

VIEW D

PANEL  
138409-01-CHT  
SCREW  
G39-08-08T (4)

POWER CORD COMPT  
(REF)

WATER HEATER-10 GAL  
51391-05-000  
DOOR  
125420-01-CHT  
PLATE-WATER HEATER  
133224-01-CHT  
(TAB GOES FORWARD)  
SCREW  
G39-10-10T (16)

VIEW F

FIRST USED	02 P36GD
TITLE	DO NOT SCALE DRAWING
TITLE	WATER SYSTEM INSTL
SHEET 5	PART NO 139562

- TU-9 30
- A-17
- A-5
- TU-3 1000
- A-5
- C1-3
- CH-2 2
- 53P
- 53J

- 53P 53J 133523-01-CHT
- 530 133523-02-CHT
- 53P 53J 133629-02-CHT

- 53P V-11
- 53J

BRACKET-SHOWER CONTROL  
131554-01-CHT

- 53J
- 53P
- V-11

LUMBER  
52372-d0-500 (53J)

E-22

TU-9 235

TU-9 540

TU-9 2650

TU-9 540

E-20

E-20

E-21

TU-9 305

TU-9 1820

TU-9 1760

TU10 1555

S-1

S-1

A-11

A-19

V-6 5

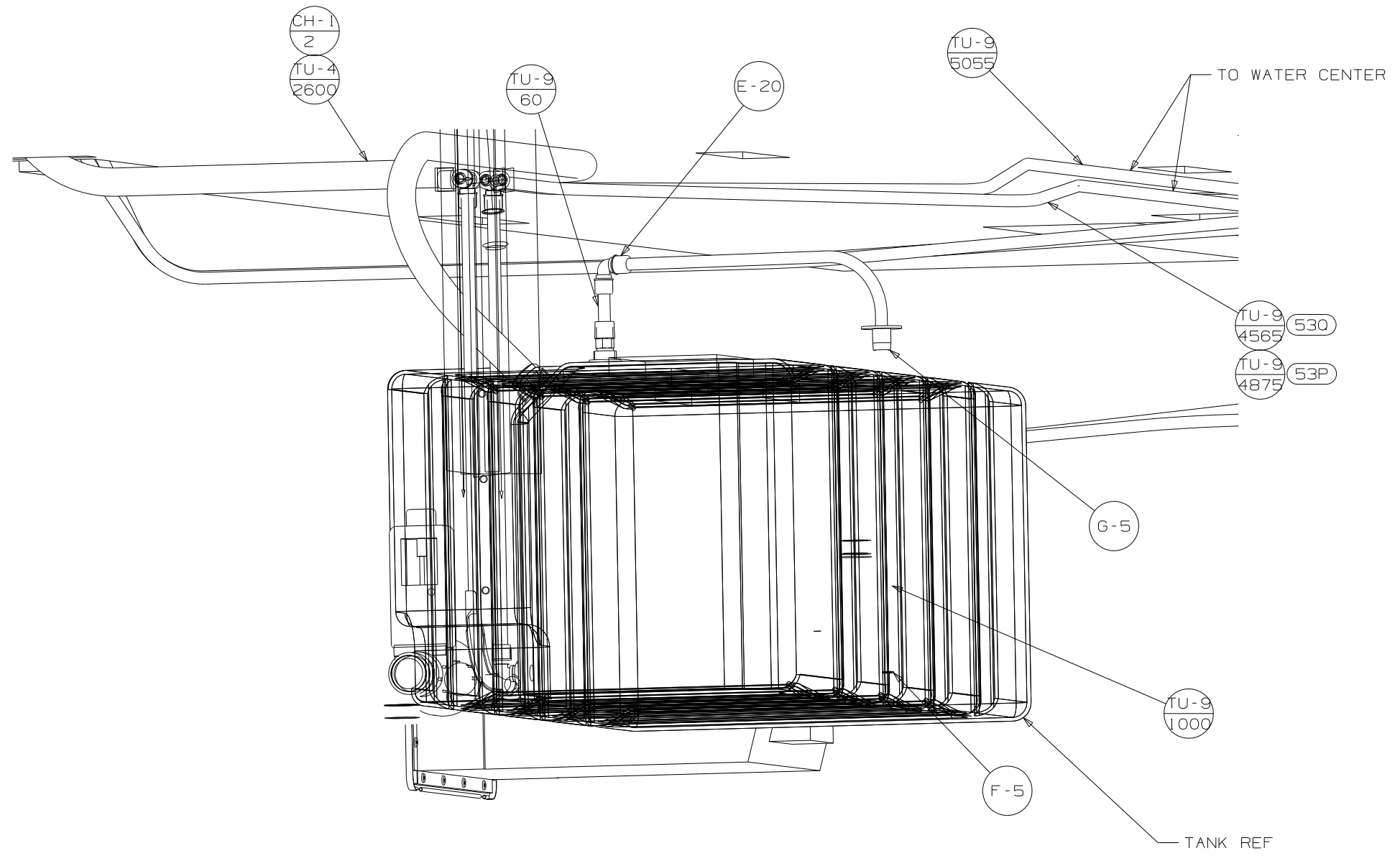
5 E-21

TU-9 100

5 E-21

A-11





VIEW G

FIRST USED	02 P36GD
TITLE	DO NOT SCALE DRAWING
SHEET 6	PART NO 139562