



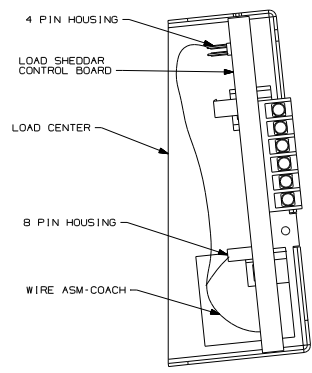
DANGER

Danger of electrical shock, burns or death. Always remove all power sources before attempting any repair, service or diagnostic work. Power can be present from shore power, generator, inverter or battery. All power sources must be disabled and secured before performing any service.

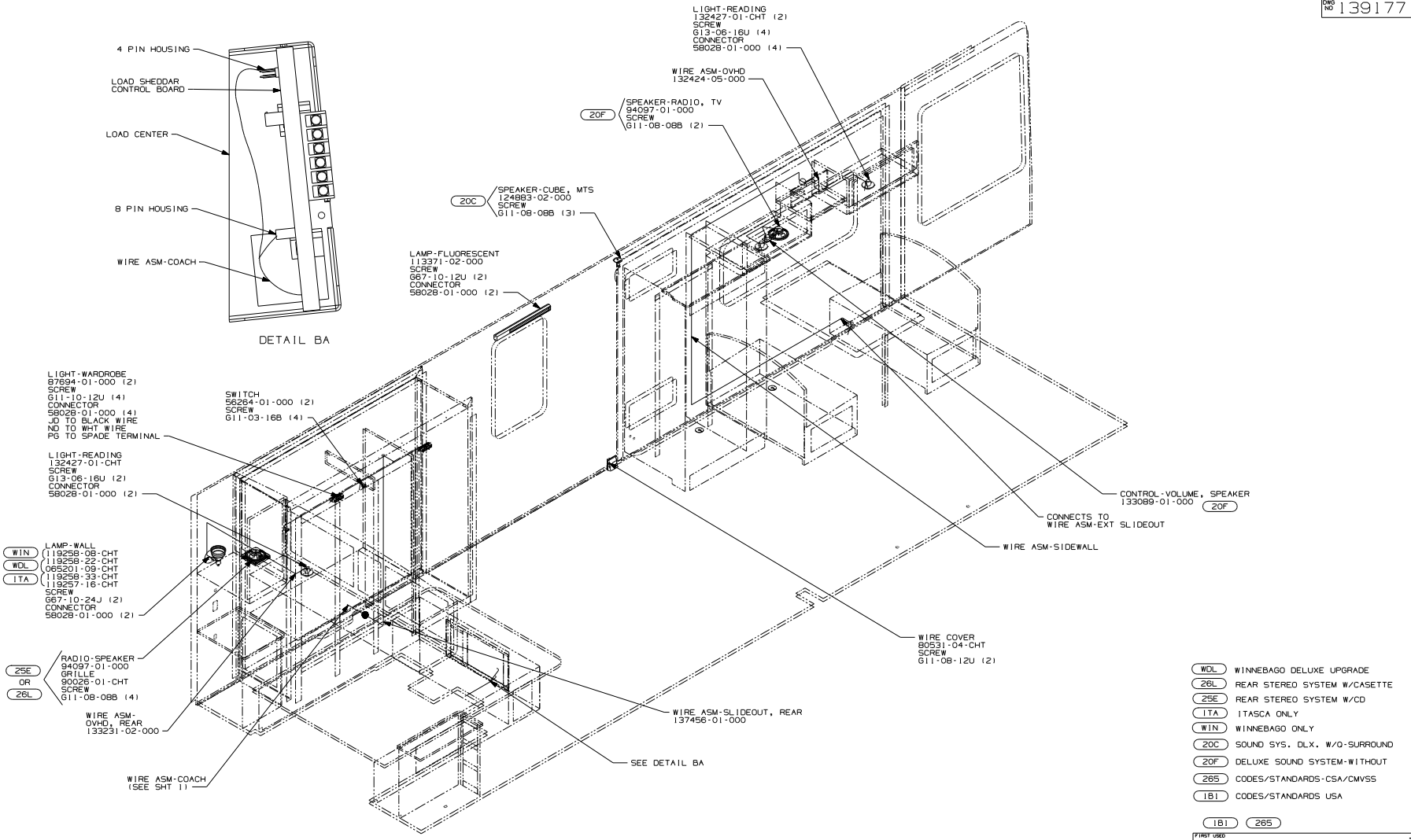


CAUTION

If you lack the skills, tools or equipment to perform diagnostic or repair work leave such work to an authorized Winnebago Industries dealer or other qualified shop.



DETAIL BA



- (WIN) LAMP-WALL 11925B-08-CHT
- (WDL) 11925B-22-CHT
- (ITA) 11925B-33-CHT
- 119257-16-CHT
- SCREW
- G87-10-24J (2)
- CONNECTOR
- 5B02B-01-000 (2)

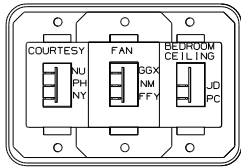
- (25E) RADIO-SPEAKER 94097-01-000
- OR GRILLE 90025-01-CHT
- (26L) SCREW G11-08-08B (4)

- (WDL) WINNEBAGO DELUXE UPGRADE
- (26L) REAR STEREO SYSTEM W/CASSETTE
- (25E) REAR STEREO SYSTEM W/CD
- (ITA) ITASCA ONLY
- (WIN) WINNEBAGO ONLY
- (20C) SOUND SYS. DLX. W/O-SURROUND
- (20F) DELUXE SOUND SYSTEM-WITHOUT
- (26S) CODES/STANDARDS-CSA/CMVSS
- (1B1) CODES/STANDARDS USA

(1B1)	(26S)
FIRST USED	
02 P32T/TD	
DO NOT SCALE DRAWING	
TITLE: WIRING INSTL-BODY, 12V	
SHEET 2	PART NO 139177

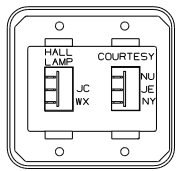
FOR ELECTRICAL TORQUE SPECIFICATIONS SEE DWG NO. 126783-01-000

(X-X) FOR ELECTRICAL CALLOUTS SEE DWG NO. 121339-01-000

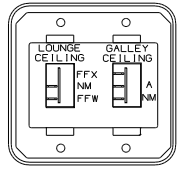


SWITCH-FAN
135740-04-CHT
SWITCH-BDRM CEILING
135740-01-CHT
SWITCH-COURTESY
135740-03-CHT
BASE
135741-03-CHT
BEZEL
135742-03-CHT
SCREW
G11-08-0BU(4)
WIRE ASM-RESISTOR, FAN (2)
140195-01-000

DETAIL DB (WIN)



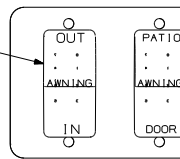
SWITCH
135740-01-CHT(2)
BASE
135741-02-CHT
BEZEL
135742-02-CHT
SCREW
G11-08-0BU(4)



SWITCH
135740-01-CHT(2)
BASE
135741-02-CHT
BEZEL
135742-02-CHT
SCREW
G11-08-0BU(4)

DETAIL DC

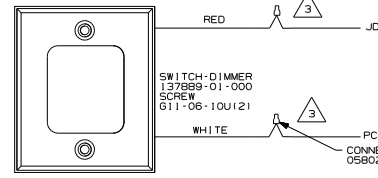
SWITCH-AWNING CONTROL
108357-06-000
ACTUATOR
108359-12-CHT
CIRCUITS
FFK,FFU,FFM
FFN,FFV,FFR



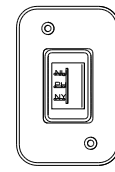
DETAIL DJ (9C1)

SWITCH-AWNING SELECTOR
108357-08-000
ACTUATOR
108359-13-CHT
CIRCUITS
FFU,FFV,FFV

PLATE
98351-22-CHT



SWITCH-DIMMER
137889-01-000
SCREW
G11-08-10U(2)
CONNECTOR
058028-01-000 (2)



SWITCH-COURTESY
135740-03-CHT
BASE
135741-01-CHT
BEZEL
135742-01-CHT
SCREW
G11-08-0BU(2)

DETAIL DB (WDL, ITA)

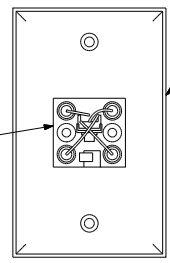
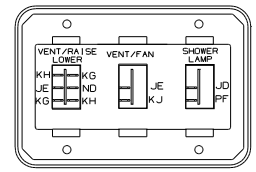


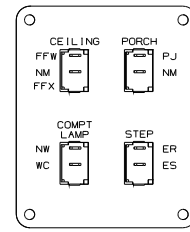
PLATE-WALL, TELEPHONE
93253-01-CHT

DETAIL DF



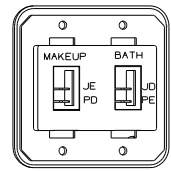
SWITCH
135740-01-CHT(12)
135740-03-CHT
BASE
135741-03-CHT
BEZEL
135742-03-CHT
SCREW
G11-08-0BU(4)

DETAIL DG (715)



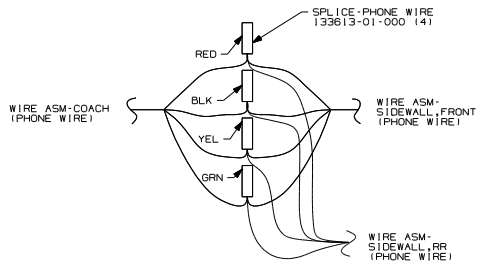
SWITCH
132180-01-CHT (3)
132180-02-CHT
PLATE-SWITCH
98351-08-CHT
SCREW
G11-06-10J (4)

DETAIL DD



SWITCH
135740-01-CHT(12)
BASE
135741-02-CHT
BEZEL
135742-02-CHT
SCREW
G11-08-0BU(4)

DETAIL DA



DETAIL DE

- (WDL) WINNEBAGO DELUXE UPGRADE
- (ITA) ITASCA ONLY
- (WIN) WINNEBAGO ONLY
- (715) VENT-POWER
- (63N) AWNING-ENTRANCE DR, ELECTRIC
- (62N) AWNING - PATIO, ELECTRIC
- (9C1) AWNING-ELECTRIC PACKAGE
- (265) CODES/STANDARDS CSA/CMV55
- (1B1) CODES/STANDARDS USA

(1B1) (265)

- 3. CUT TERMINALS FROM WIRE ASM-COACH AND REPLACE WITH CONNECTOR SHOWN
- 2. CONNECT WIRE ASM-RESISTOR, FAN TO 2-PIN HOUSING LOCATED BY THE SWITCH WIRES.
- 1. CONNECT TELEPHONE WIRES TO MATCHING COLORS ON PLATE-TELEPHONE.

NOTES:

FOR ELECTRICAL TORQUE SPECIFICATIONS SEE DWG NO. 128783-01-000

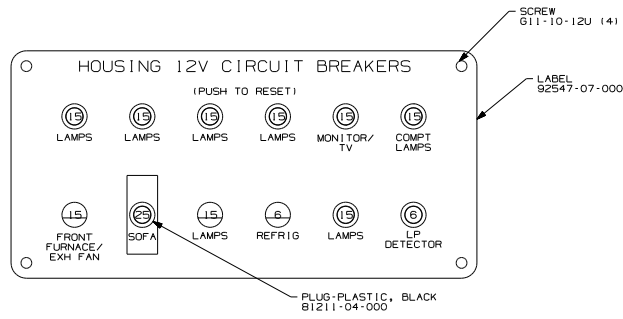
FOR ELECTRICAL CALLOUTS SEE DWG NO. 121339-01-000

FIRST USED 02 P32T/TD

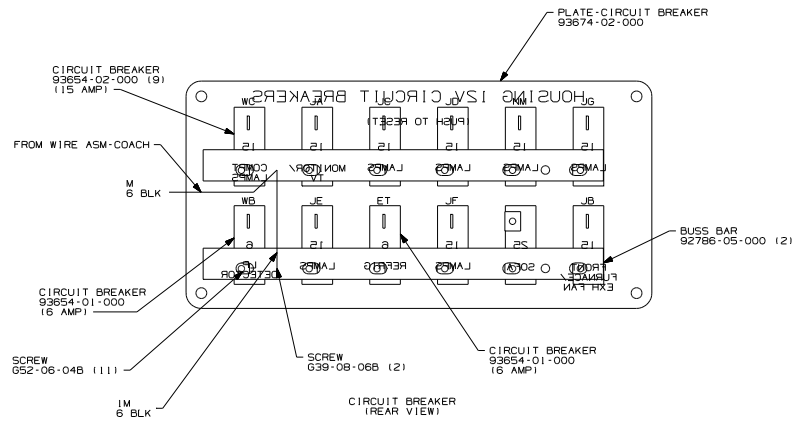
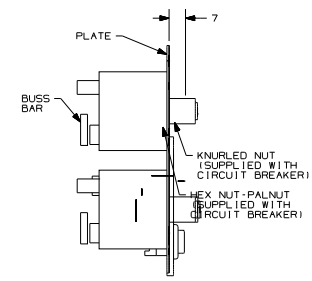
DO NOT SCALE DRAWING

WIRING INSTL-BODY,12V

SHEET 4 PART NO 139177



CIRCUIT BREAKER (FRONT VIEW)



NOTES:

1. CONNECT BLUE WIRES FROM RESET TO THE BLUE WIRES WITH SPADE TERMINALS ON A/C CORD WITH (29H) & (SLI).

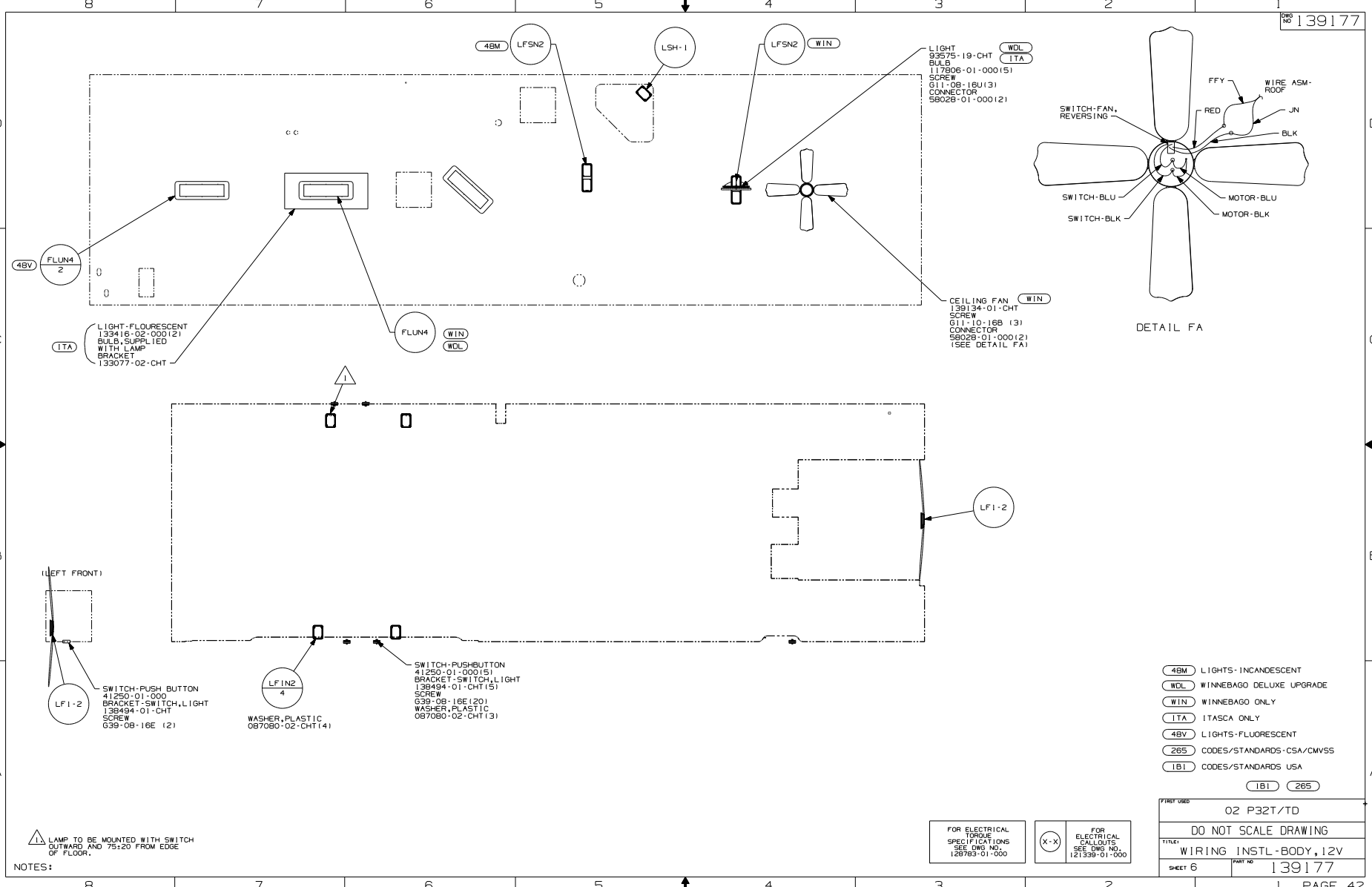
(265) CODES/STANDARDS-CSA/CMVSS
 (1B1) CODES/STANDARDS USA
 (1B1) (265)

FOR ELECTRICAL TORQUE SPECIFICATIONS SEE DWG NO. 128783-01-000

(X-X)

FOR ELECTRICAL CALLOUTS SEE DWG NO. 121339-01-000

FIRST USED		02 P32T/TD	
DO NOT SCALE DRAWING			
TITLE: WIRING INSTL-BODY, 12V			
SHEET 5	PART NO	139177	



FIRST USED	
02 P32T/TD	
DO NOT SCALE DRAWING	
TITLE: WIRING INSTL-BODY,12V	
SHEET 6	PART NO 139177

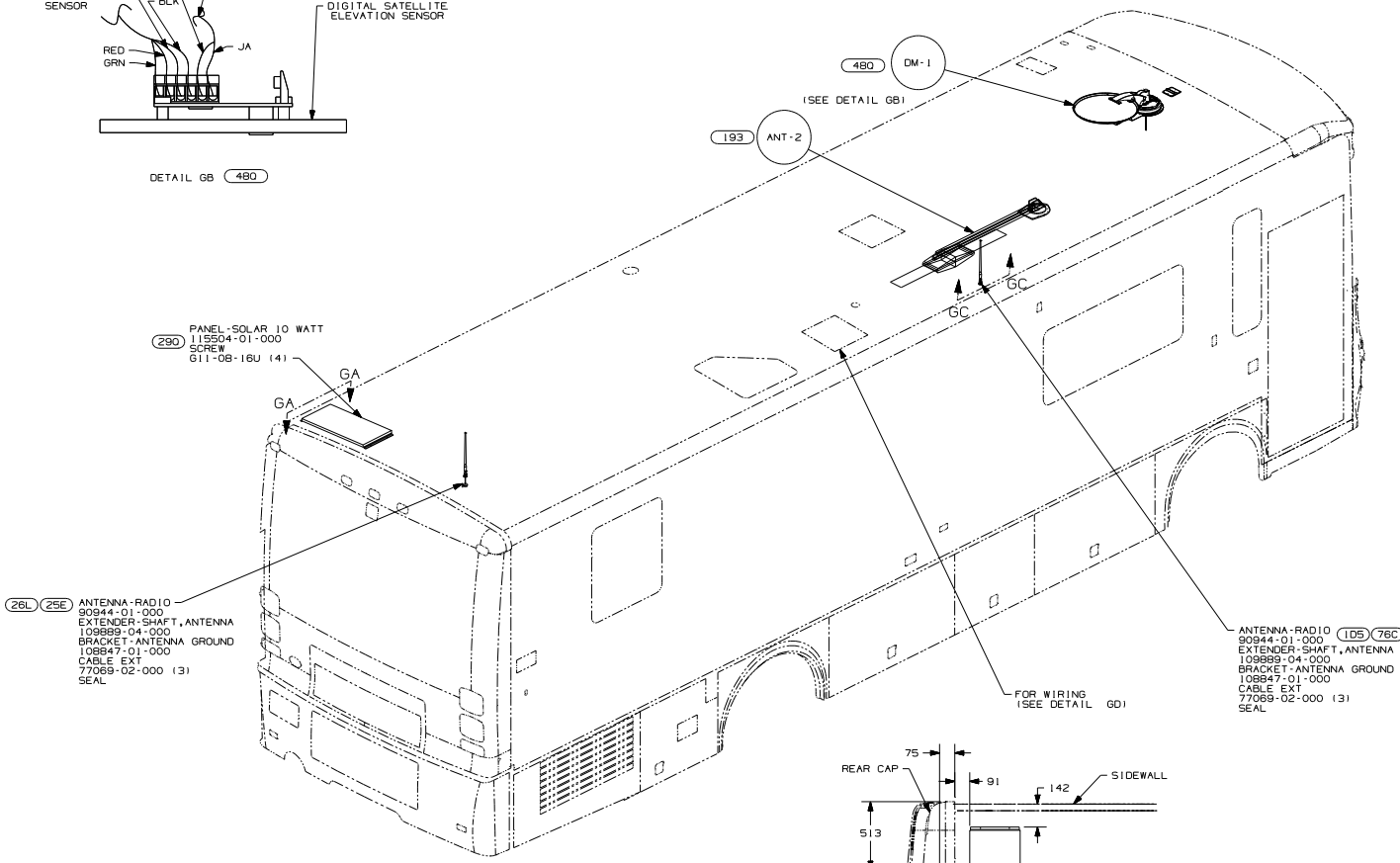
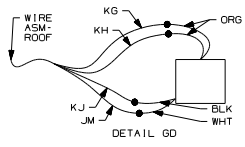
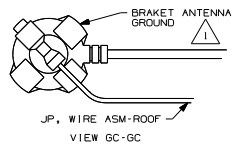
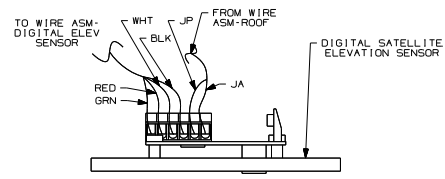
FOR ELECTRICAL TORQUE SPECIFICATIONS SEE DWG NO. 128783-01-000

(X-X)

FOR ELECTRICAL CALLOUTS SEE DWG NO. 121339-01-000

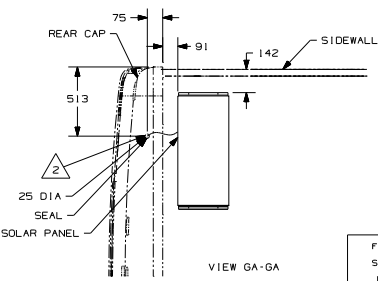
NOTES:

▲ LAMP TO BE MOUNTED WITH SWITCH OUTWARD AND 75±20 FROM EDGE OF FLOOR.



26L 25E ANTENNA-RADIO 90944-01-000
 EXTENDER-SHAFT, ANTENNA 109889-04-000
 BRACKET-ANTENNA GROUND 108847-01-000
 CABLE EXT 77069-02-000 (3)
 SEAL

105 78C ANTENNA-RADIO 90944-01-000
 EXTENDER-SHAFT, ANTENNA 109889-04-000
 BRACKET-ANTENNA GROUND 108847-01-000
 CABLE EXT 77069-02-000 (3)
 SEAL



FOR ELECTRICAL TORQUE SPECIFICATIONS SEE DWG NO. 128783-01-000

(X-X) FOR ELECTRICAL CALLOUTS SEE DWG NO. 121339-01-000

- 26L REAR STEREO SYSTEM W/CASSETTE
- 25E REAR STEREO SYSTEM W/CD
- 290 SOLAR PANEL-10 WATT
- 78C ENTERTAINMENT CTR/EXT CASSETTE
- 105 ENTERTAINMENT CTR/EXT W/CD
- 480 SATELLITE DISH & ELEV. SENSOR
- 193 TV ANTENNA-AMPLIFIED SYSTEM
- 26S CODES/STANDARDS-CSA/CMVSS
- 181 CODES/STANDARDS USA

- 2 DRILL HOLE IN REAR CAP FOR WIRE DROP TO SOLAR PANEL FROM WIRE ASM-ROOF.
- 1 WRAP BRACKET LEGS AROUND ANTENNA BASE.

PART ORG	
02 P32T/TD	
DO NOT SCALE DRAWING	
TITLE: WIRING INSTL-BODY, 12V	
SHEET 7	PART NO 139177